

DC Zoning Map

- Lots
- Square
- Pending Zones
- Pending
- Zone Boundary
- Zone District
 - Downtown Zone
 - Mixed-Use Zone
 - Mixed-Use Zone (IZ+)
 - Mixed-Use Zone (IZ+ Exempt)
 - Neighborhood Mixed-Use Zone
 - Neighborhood Mixed-Use Zone (IZ+)
 - Production, Distribution, and Repair Zone
 - Residential Apartment Zone
 - Residential Apartment Zone (IZ+)
 - Residential Flat Zone
 - Residential Zone
 - Special Purpose Zone
 - Special Purpose Zone (IZ+)
 - Unzoned
- Specific Zone
 - Downtown Zone
 - Mixed-Use Zone
 - Mixed-Use Zone (IZ+)
 - Mixed-Use Zone (IZ+ Exempt)
 - Neighborhood Mixed-Use Zone
 - Neighborhood Mixed-Use



330

Feet

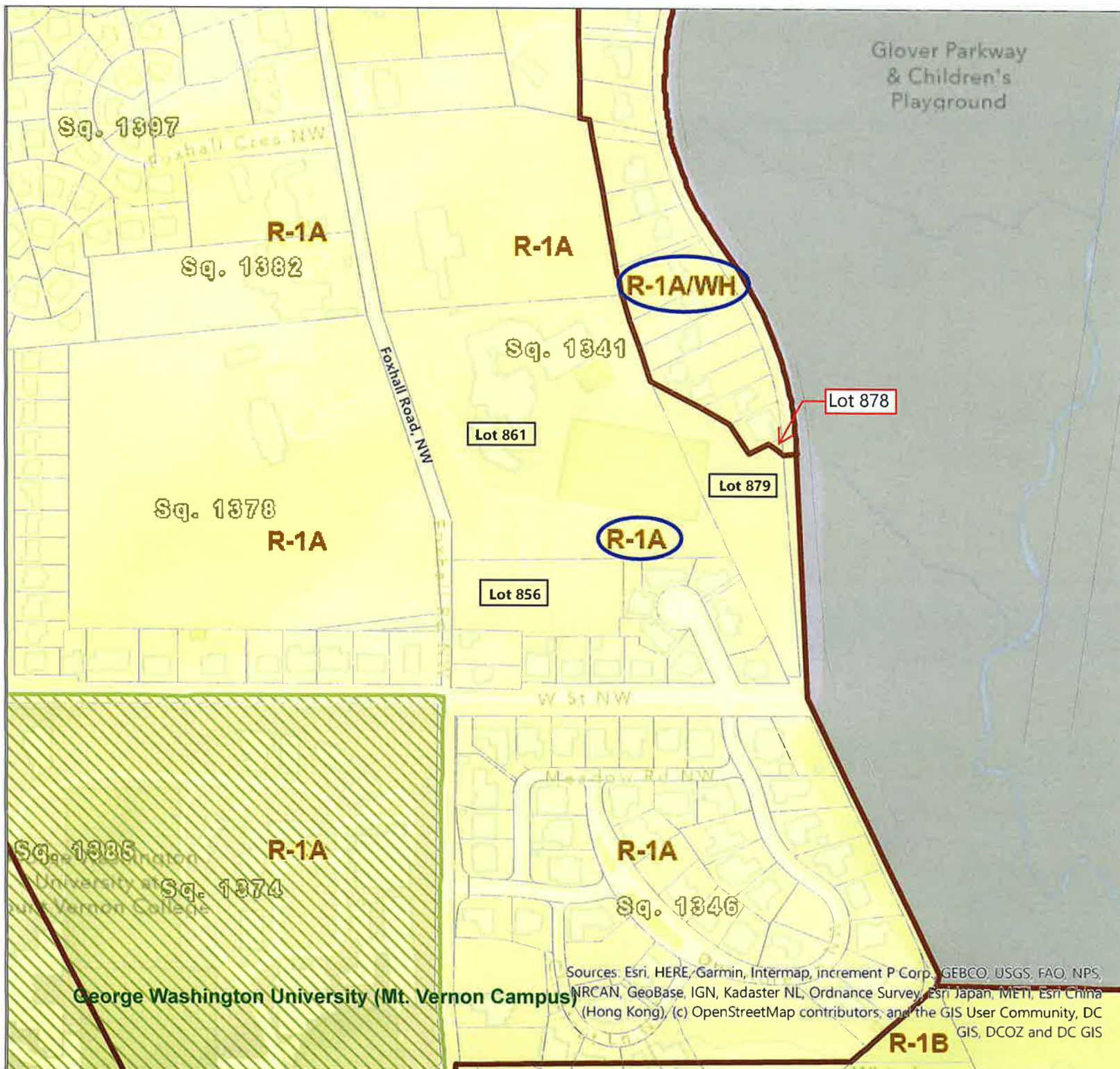
Generated on maps.dcoz.dc.gov/zr16

Web Extract of the Official Zoning Map of the District of Columbia created on 10/8/2024.

Service provided by the DC Office of Zoning.

44th St NW, Ste 200, Justment Washington, DC 20001

For reference only. To certify zoning on any property in order to satisfy a legal requirement, contact the Office of Zoning.



Sources: Esri, HERE, Garmin, Intermap, increment P Corp., GEBCO, USGS, FAO, NPS, NRCAN, GeoBase, IGN, Kadaster NL, Ordnance Survey, Esri Japan, METI, Esri China (Hong Kong), (c) OpenStreetMap contributors, and the GIS User Community, DC GIS, DCOZ and DC GIS