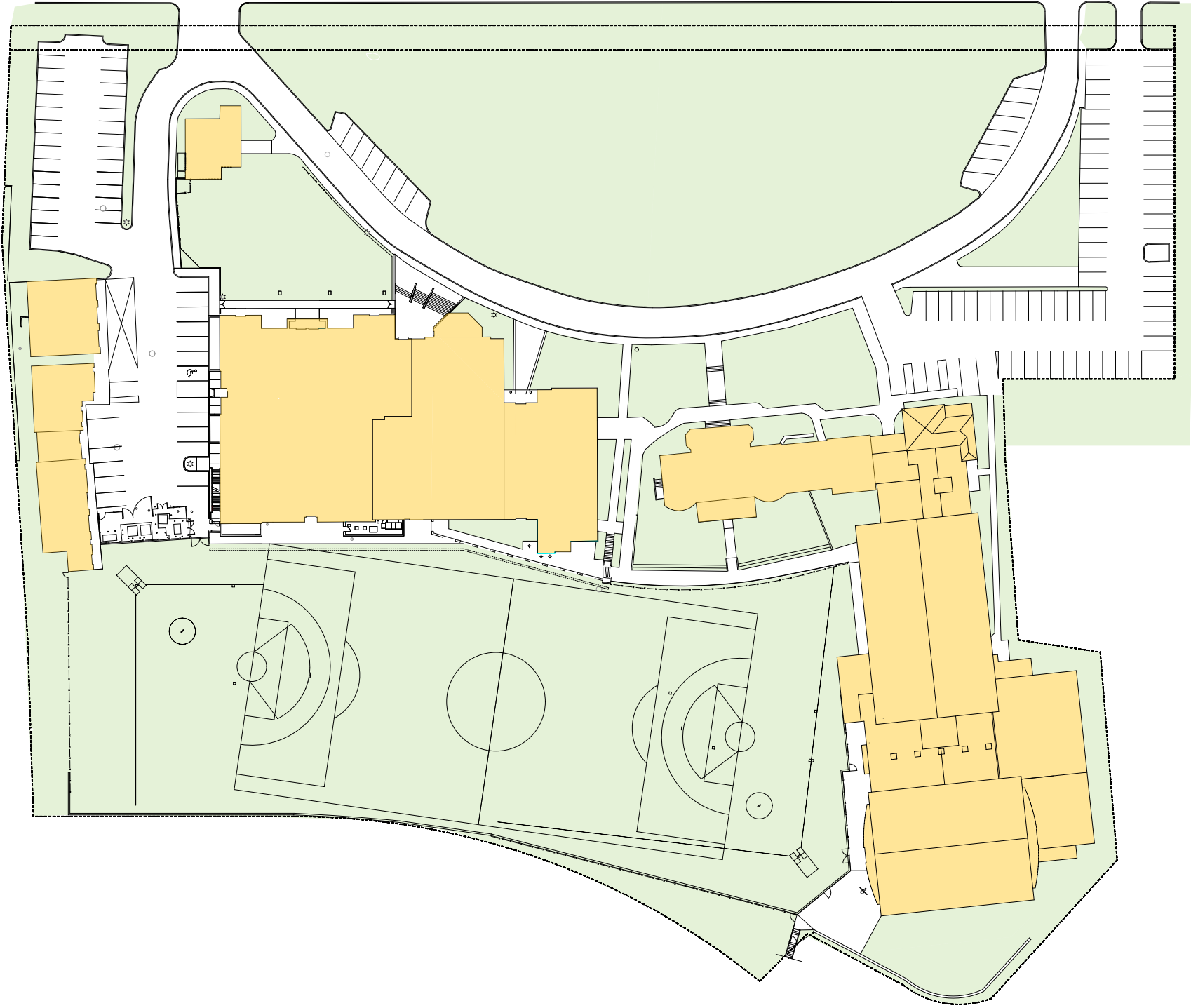


MARET SCHOOL

NOSCERE VIVERE EST
"TO LEARN IS TO LIVE"

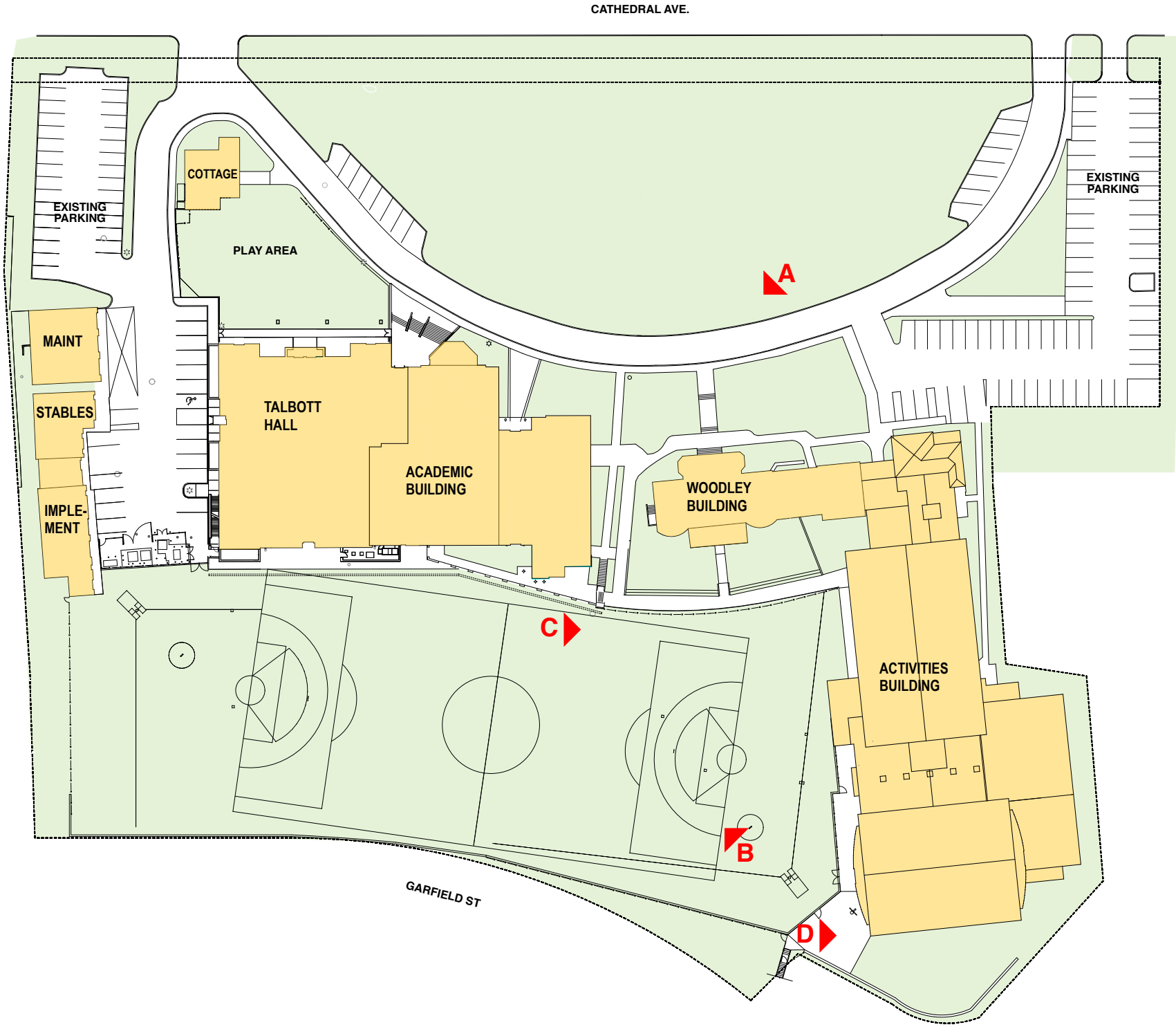
3000 CATHEDRAL AVE, NW
WASHINGTON DC 20008



PHASE 4 ACTIVITIES BUILDING RENOVATION AND ADDITION

Maret School BZA SUBMISSION

EXISTING SITE PHOTOS



VIEW A



VIEW B



VIEW C



VIEW D



PHASE 4 ACTIVITIES BUILDING RENOVATION AND ADDITION - EXISTING SITE PLAN

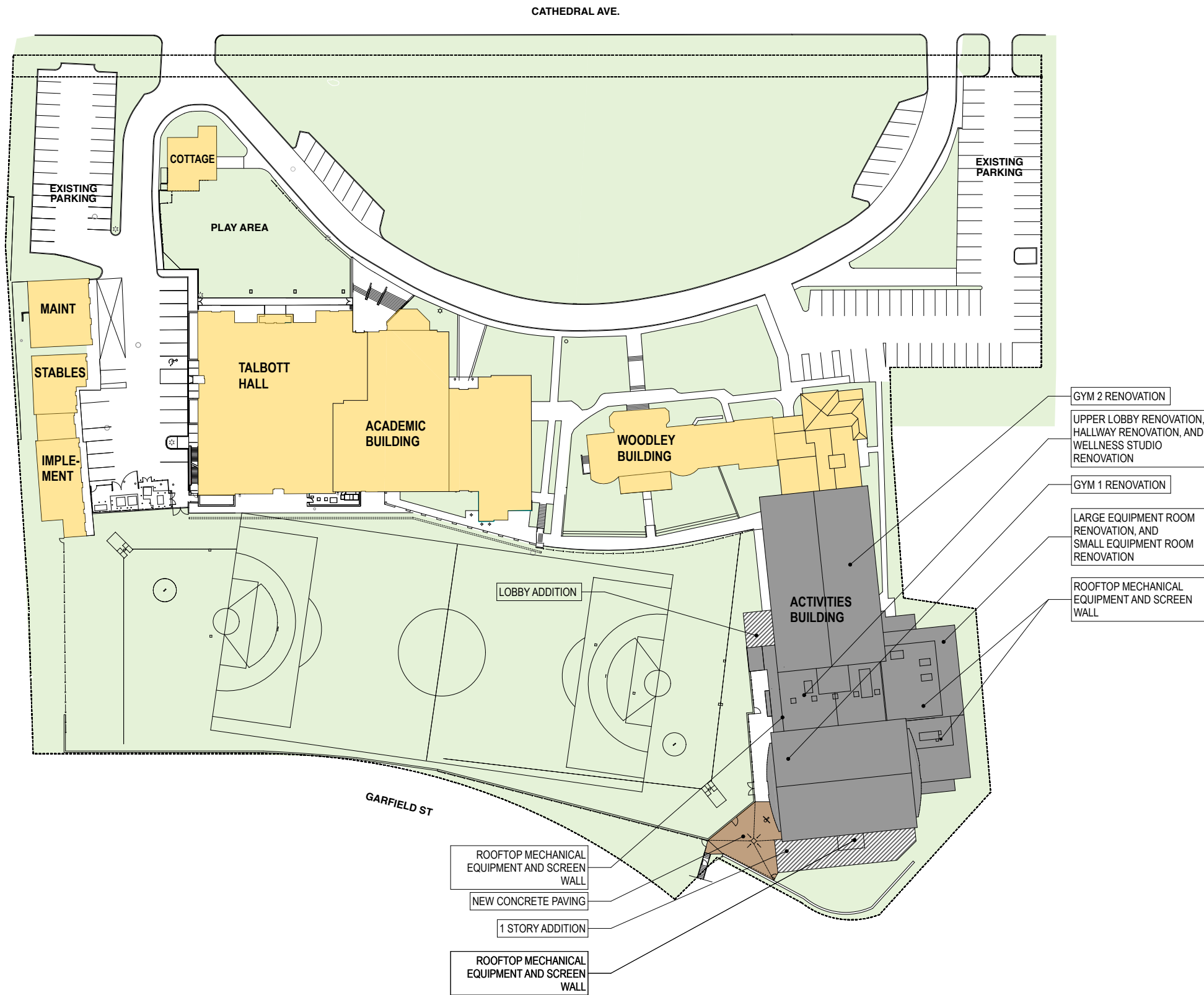
Maret School BZA SUBMISSION

cox graae + spack architects


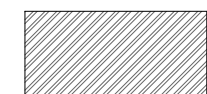


14 FEBRUARY 2017

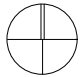


copyright © cox graae + spack architects 2017



ZONING DATA SUMMARY		
DATA	EXISTING	PROPOSED
SETBACKS & BUILDING HEIGHTS		
SIDE YARD* SETBACK (LEFT WHEN YOU FACE PROPERTY)	13' LINEAR FEET	13' LINEAR FEET
SIDE YARD* SETBACK (RIGHT WHEN YOU FACE PROPERTY)	13' LINEAR FEET	13' LINEAR FEET
REAR YARD* SETBACK	16' LINEAR FEET	16' LINEAR FEET
BUILDING HEIGHT*	4 STORIES	4 STORIES
BUILDING HEIGHT*	42' FEET	42' FEET
AREAS		
LOT AREA	344,376 SQUARE FEET	344,376 SQUARE FEET
GROSS FLOOR AREA* (GFA) OF ENTIRE BUILDING (SUM OF ALL FLOORS)	178,842 SQUARE FEET	180,833 SQUARE FEET
FLOOR AREA RATIO*	52% GFA / LOT AREA	52.5% GFA / LOT AREA
BUILDING AREA* (SUM OF FOOTPRINTS OF ALL BUILDINGS)	66,573 SQUARE FEET	68,564 SQUARE FEET
LOT OCCUPANCY* (BLDG AREA / LOT AREA)	19%	19.90%

-  EXISTING BUILDING
-  AREA OF NEW ADDITION
-  AREA OF INTERIOR RENOVATION
-  NEW CONCRETE PAVING

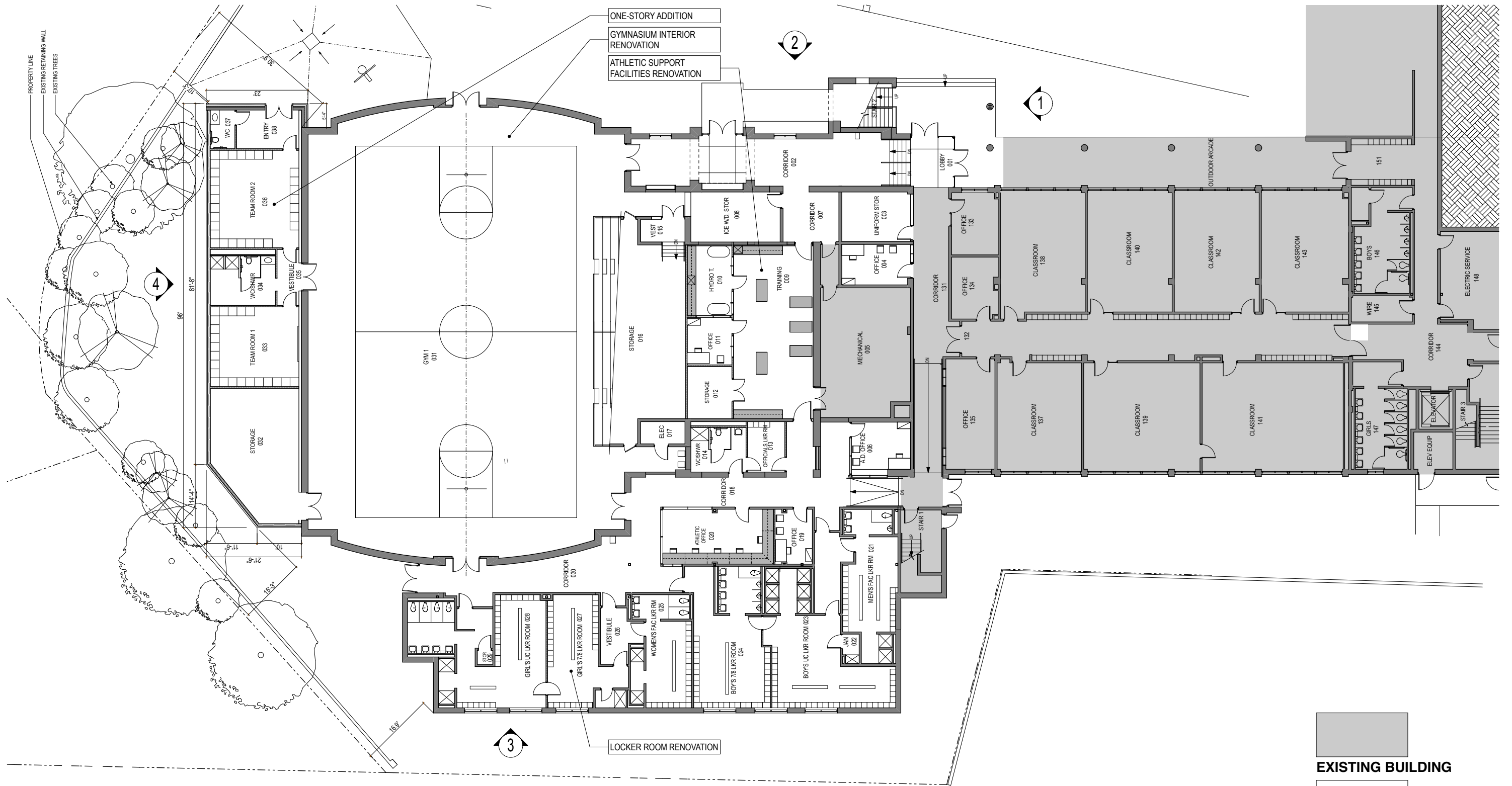


PHASE 4 ACTIVITIES BUILDING RENOVATION AND ADDITION - PROPOSED SITE PLAN

Maret School BZA SUBMISSION

cox graae + spack architects 

14 FEBRUARY 2017



ONE-STORY ADDITION
 GYMNASIUM INTERIOR RENOVATION
 ATHLETIC SUPPORT FACILITIES RENOVATION

LOCKER ROOM RENOVATION

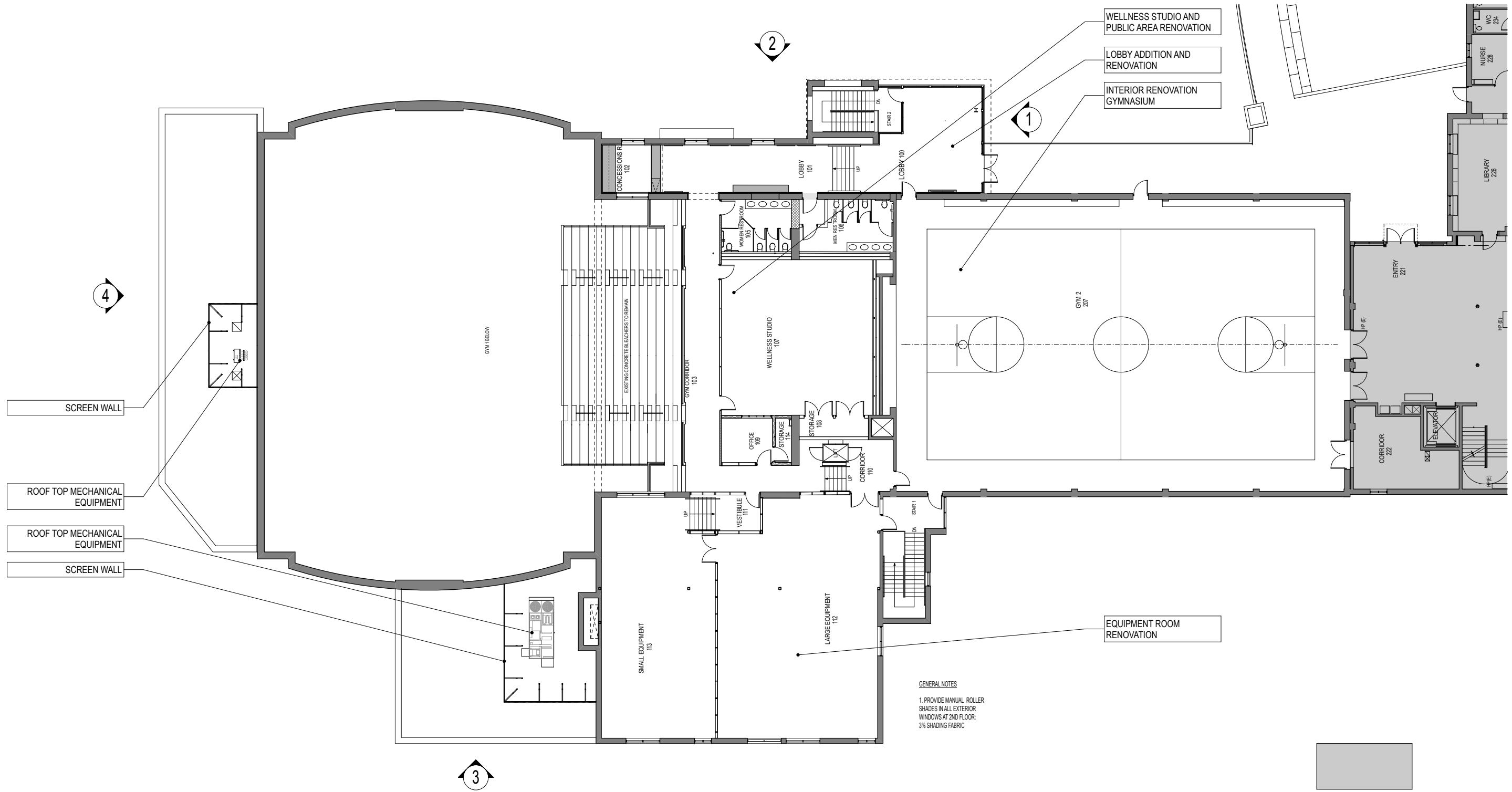
1ST FLOOR PLAN
 SCALE: 3/64" = 1'-0"

EXISTING BUILDING

 AREA OF WORK

PHASE 4 ACTIVITIES BUILDING RENOVATION AND ADDITION - PLANS
Maret School BZA SUBMISSION

copyright © cox grae + spack architects 2017



SCREEN WALL

ROOF TOP MECHANICAL EQUIPMENT

ROOF TOP MECHANICAL EQUIPMENT

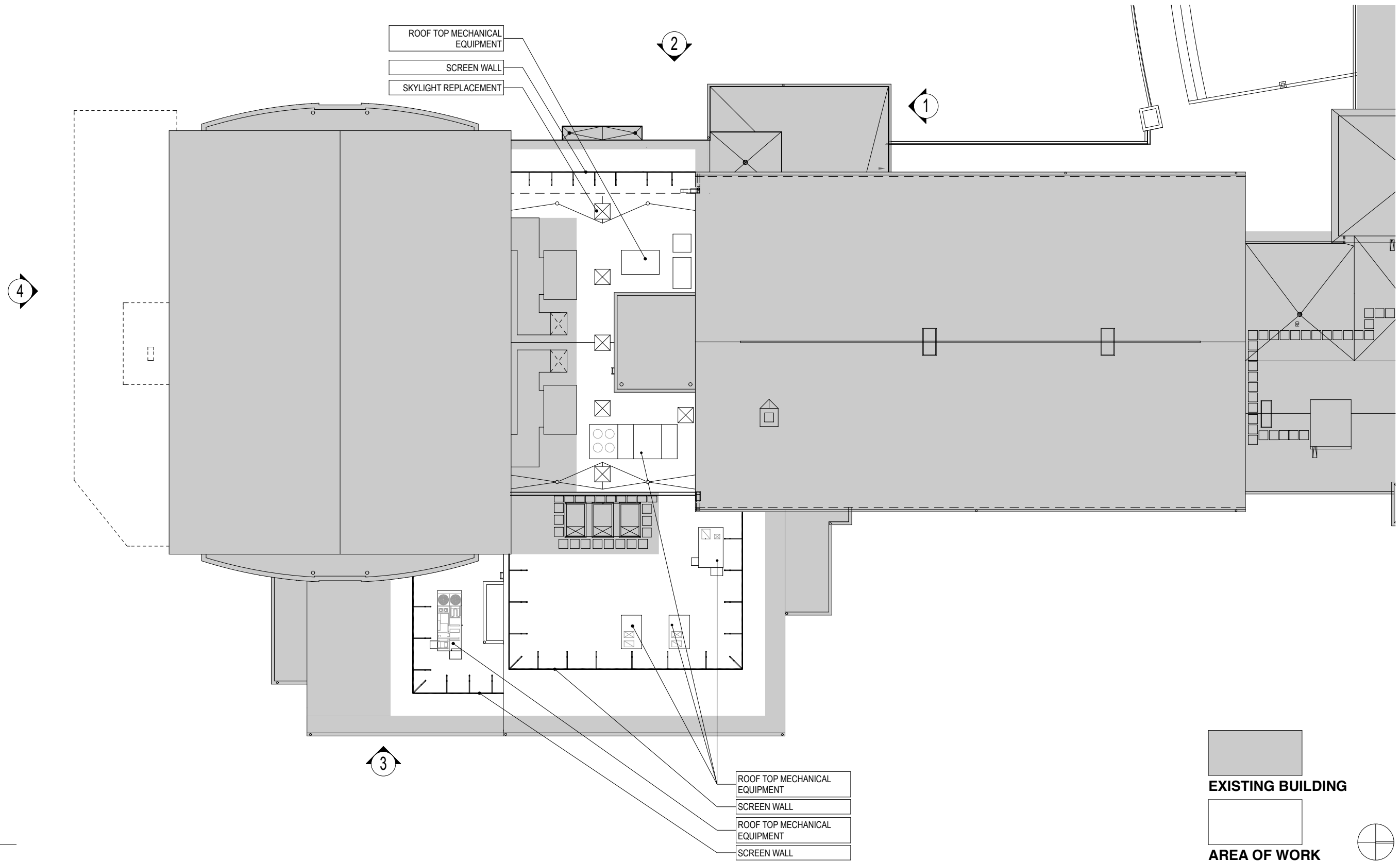
SCREEN WALL

GENERAL NOTES

1. PROVIDE MANUAL ROLLER SHADES IN ALL EXTERIOR WINDOWS AT 2ND FLOOR. 3% SHADING FABRIC

2ND FLOOR PLAN
SCALE: 3/64" = 1'-0"

PHASE 4 ACTIVITIES BUILDING RENOVATION AND ADDITION - PLANS
Maret School BZA SUBMISSION



ROOF PLAN

SCALE: 3/64" = 1'-0"

PHASE 4 ACTIVITIES BUILDING RENOVATION AND ADDITION - PLANS

Maret School BZA SUBMISSION

cox graae + spack architects

14 FEBRUARY 2017



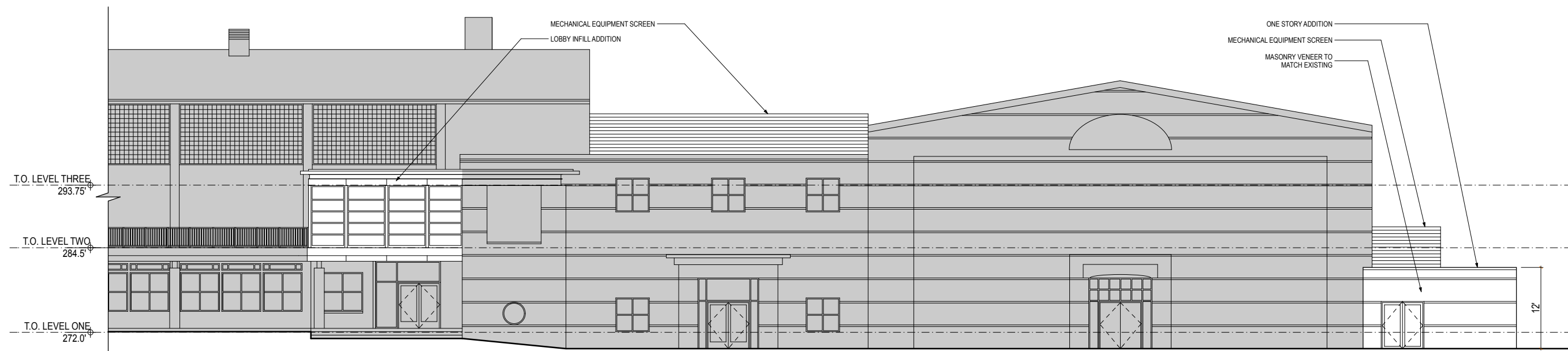
5

copyright © cox graae + spack architects 2017



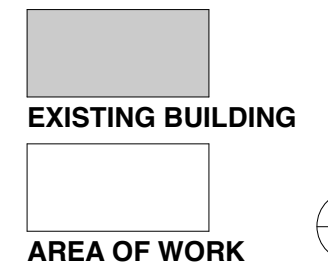
1 NORTH ELEVATION

SCALE: 1/8" = 1'-0"



2 WEST ELEVATION

SCALE: 1/8" = 1'-0"



PHASE 4 ACTIVITIES BUILDING RENOVATION AND ADDITION - ELEVATIONS

Maret School BZA SUBMISSION

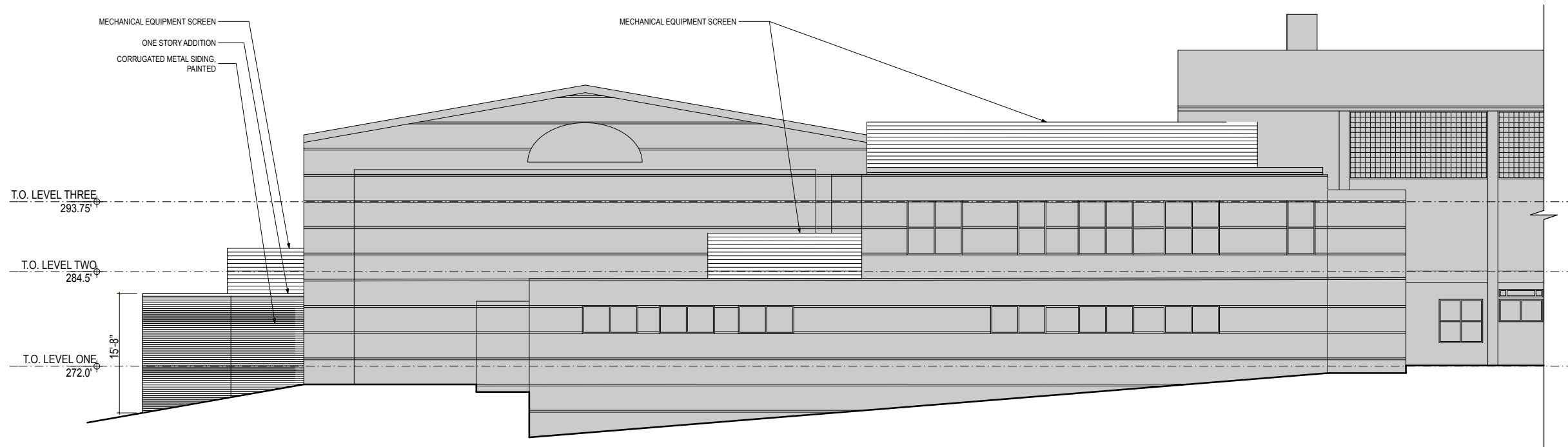
cox graae + spack architects

14 FEBRUARY 2017



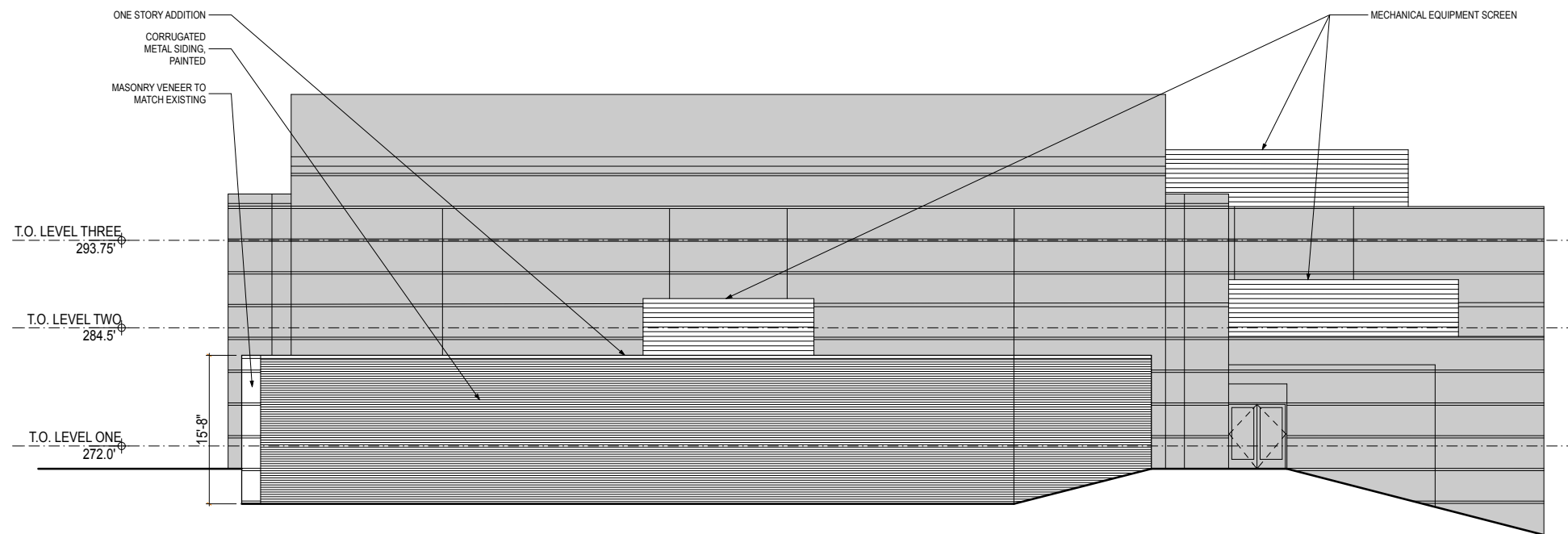
6

copyright © cox graae + spack architects 2017



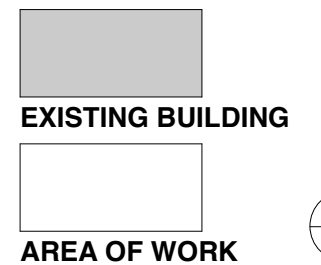
3 EAST ELEVATION

SCALE: 1/8" = 1'-0"



4 SOUTH ELEVATION

SCALE: 1/8" = 1'-0"



PHASE 4 ACTIVITIES BUILDING RENOVATION AND ADDITION - ELEVATIONS

Maret School BZA SUBMISSION

cox graae + spack architects

14 FEBRUARY 2017



7

copyright © cox graae + spack architects 2017

EXISTING SOUTH SITE PHOTOS



VIEW A: SOUTH ELEVATION LOOKING EAST



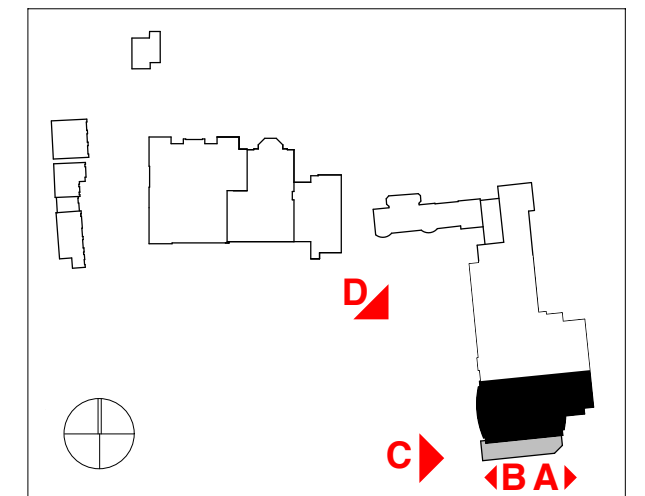
VIEW B: SOUTH ELEVATION LOOKING WEST



VIEW C: SOUTHWEST CORNER



VIEW D: WEST ELEVATION



PHASE 4 ACTIVITIES BUILDING RENOVATION AND ADDITION - EXISTING IMAGES

Maret School BZA SUBMISSION

cox graae + spack architects

14 FEBRUARY 2017



8

copyright © cox graae + spack architects 2017

EXISTING NEIGHBORING PHOTOS



VIEW A: LOOKING NORTH FROM GARFIELD ST



VIEW B: LOOKING NW FROM SOUTH NEIGHBOR



VIEW C: LOOKING NW FROM SOUTH NEIGHBOR



VIEW D: LOOKING NW FROM SOUTH NEIGHBOR

