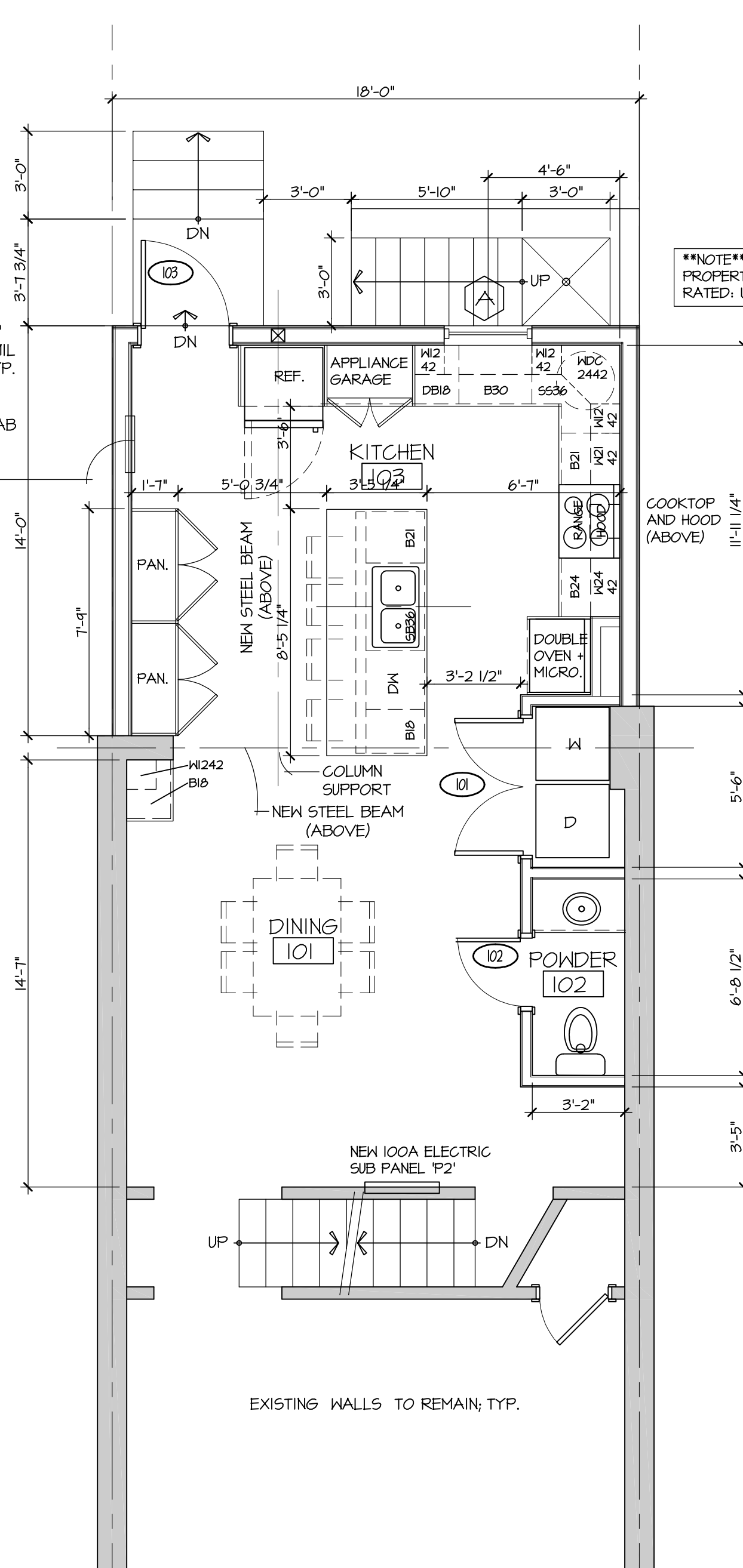


LOWER LEVEL PLAN

1/4" = 1'-0"

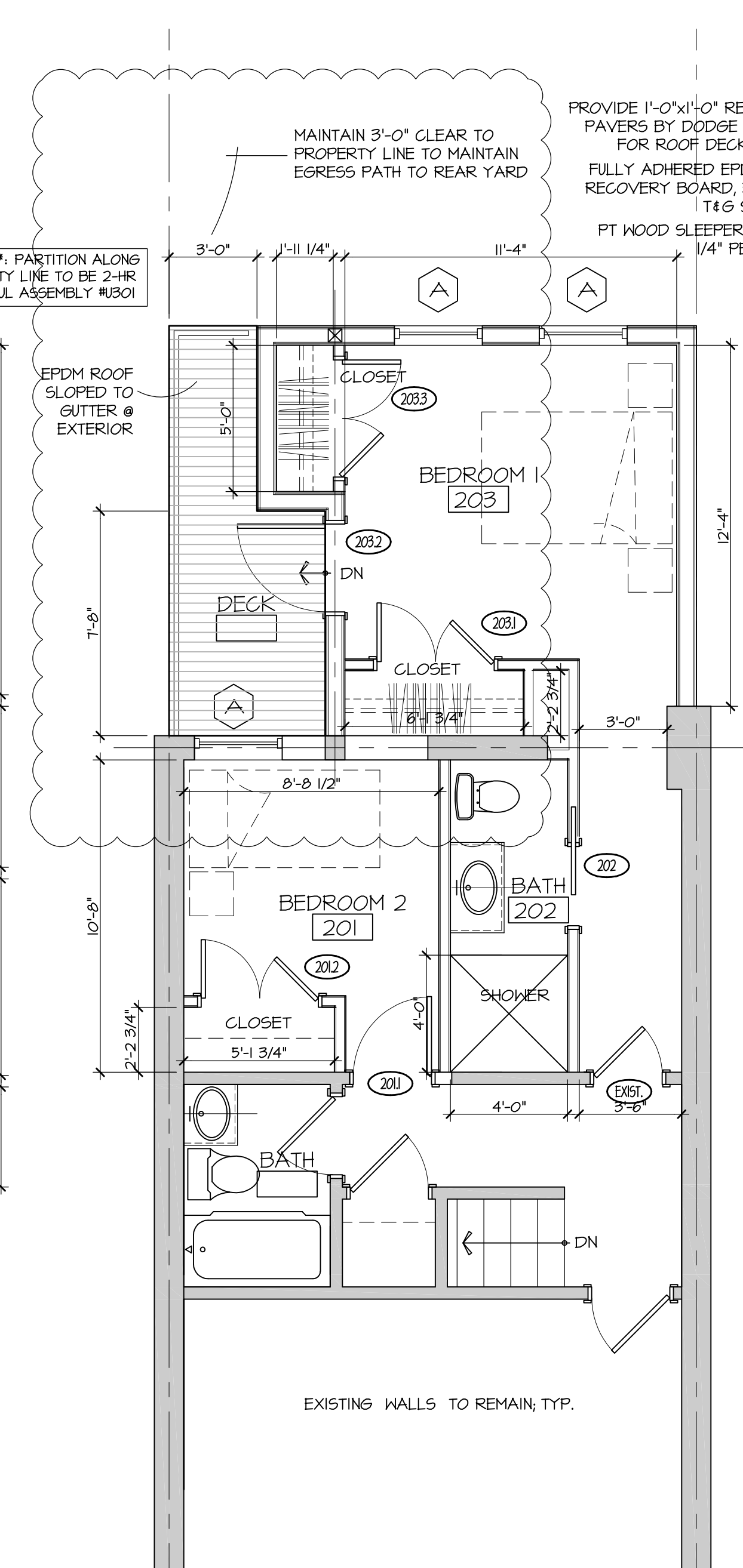
1



FIRST FLOOR PLAN

1/4" = 1'-0"

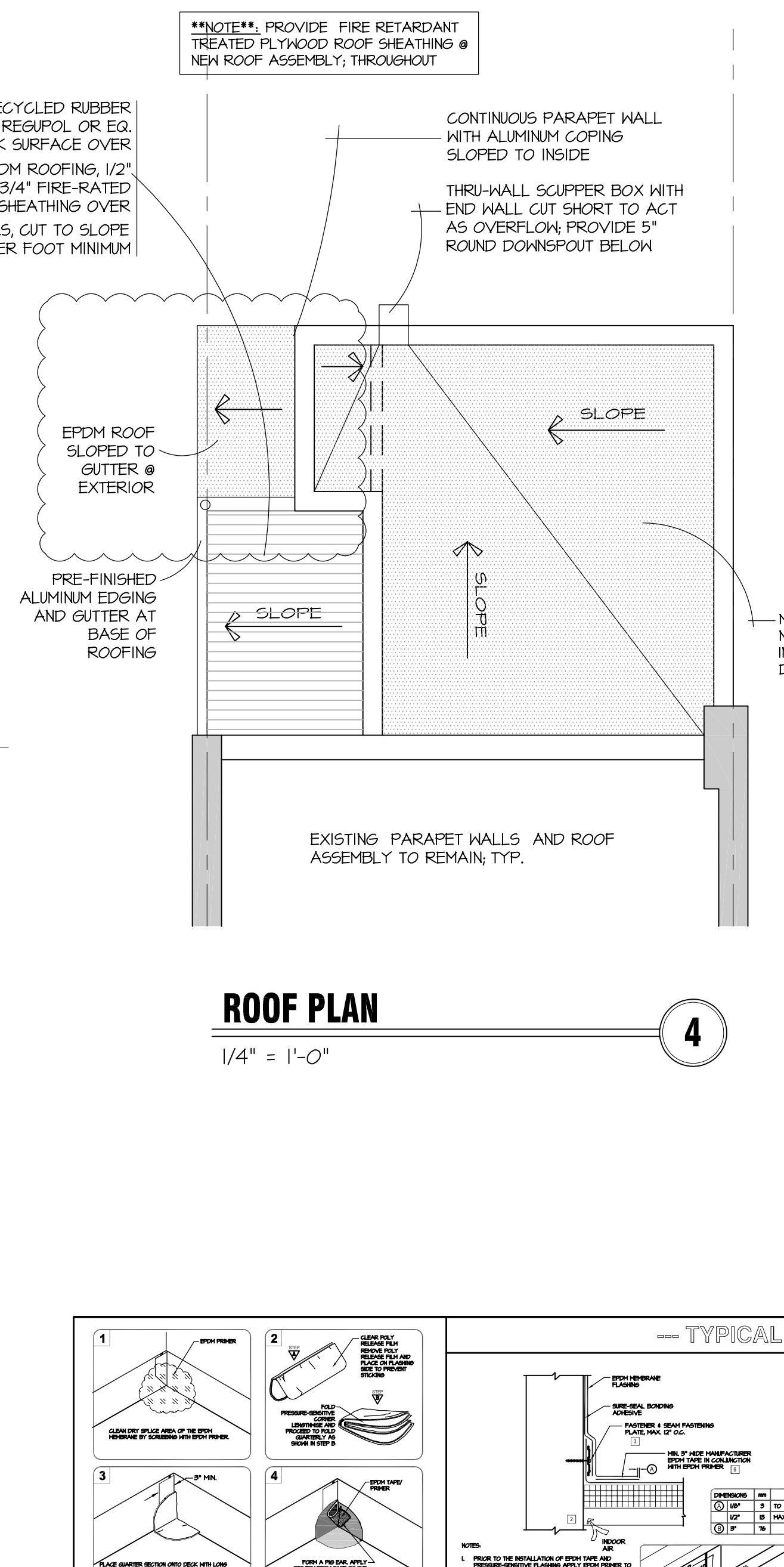
2



SECOND FLOOR PLAN

1/4" = 1'-0"

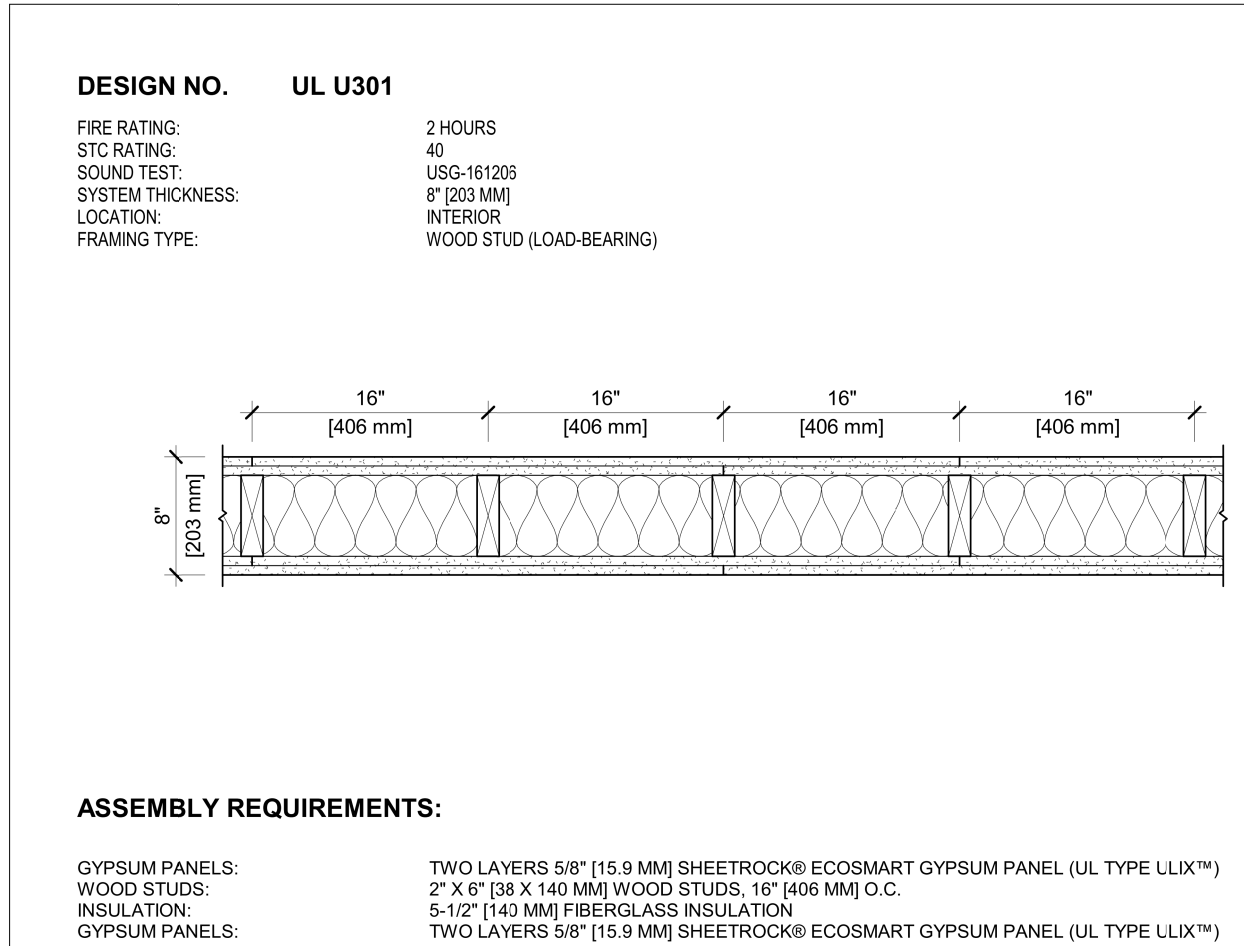
3



ROOF PLAN

1/4" = 1'-0"

4



USG CGC

USG Corporation
550 West Adams Street
Chicago, IL 60601 USA
www.usg.com

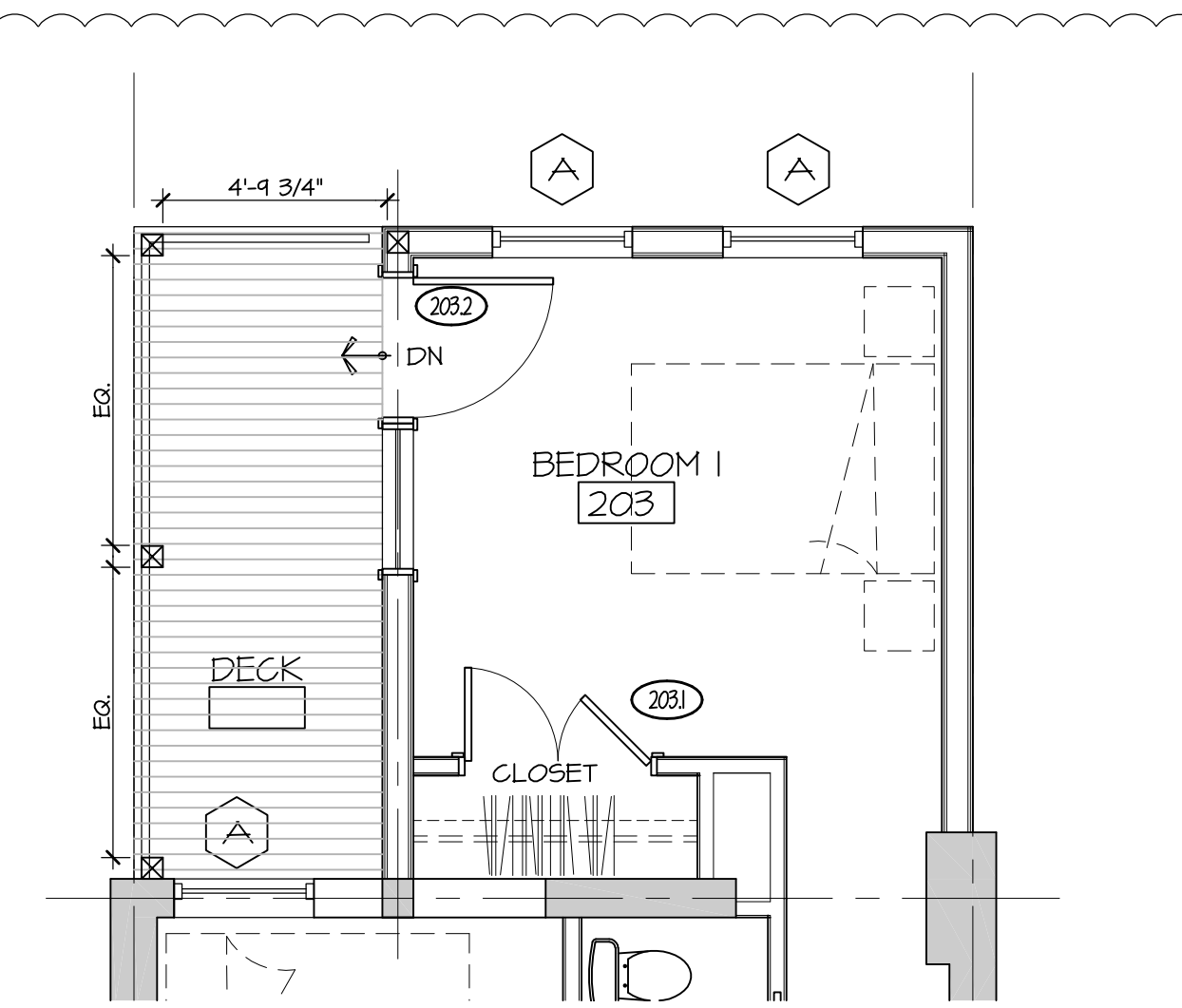
DISCLAIMER: THE USG PRODUCT INFORMATION CONTAINED HEREIN ARE INTENDED FOR USE AS A GUIDE ONLY. THE USER SHALL BE RESPONSIBLE FOR OBTAINING ALL NECESSARY PERMITS AND FOR OBTAINING ALL NECESSARY INFORMATION FROM THE LOCAL BUILDING DEPARTMENT AND FOR OBTAINING ALL NECESSARY INFORMATION FROM THE LOCAL BUILDING DEPARTMENT AND FOR OBTAINING ALL NECESSARY INFORMATION FROM THE LOCAL BUILDING DEPARTMENT.

UL U301

W-P-2-04

GENERAL WALL NOTES:

1. REFER TO APPLICABLE CODES REQUIREMENTS TO ENSURE COMPLIANCE PRIOR TO CONSTRUCTION.
2. FOR THE MOST UP-TO-DATE DETAILS, INCLUDING CONSTRUCTION VARIATIONS, REFER TO THE PUBLISHED DESIGN.
3. WHERE DESIGN NO. INDICATES "PER", THE FIRE RATING IS BASED ON LABORATORY TEST DATA OF THE REFERENCED SIMILARLY CONSTRUCTED ASSEMBLIES.
4. STUD SIZES AND INSULATION THICKNESS ARE MINIMUM UNLESS OTHERWISE STATED IN THE PUBLISHED ASSEMBLY.
5. STUD AND FASTENER SPACINGS ARE MAXIMUM UNLESS OTHERWISE STATED IN THE PUBLISHED ASSEMBLY.
6. PANEL ORIENTATION SHALL BE AS SPECIFIED IN THE PUBLISHED DESIGN.
7. FIRE RATINGS ARE FROM BOTH SIDES UNLESS OTHERWISE STATED.
8. FIRE RATINGS ARE MAINTAINED WITH ONE OR MORE OF THE FOLLOWING MODIFICATIONS: INCREASE STUD DEPTH, INCREASE STUD MATERIAL THICKNESS, INCREASE STUD SPACING, INCREASE FASTENER SPACING, INCREASE INSULATION THICKNESS UP TO CAVITY DEPTH.
9. WHERE ACOUSTICAL PERFORMANCE IS PROVIDED IN AN ESTIMATED RANGE, THE VALUES ARE BASED ON LABORATORY TEST DATA OF SIMILARLY CONSTRUCTED ASSEMBLIES.
10. SOUND RATINGS ARE MAINTAINED WITH ONE OR MORE OF THE FOLLOWING MODIFICATIONS: INCREASE STUD DEPTH, INCREASE STUD MATERIAL THICKNESS, INCREASE STUD SPACING, INCREASE FASTENER SPACING, INCREASE INSULATION THICKNESS UP TO CAVITY DEPTH. MODIFICATIONS MUST NOT EXCEED LIMITATIONS OF FIRE RATING.

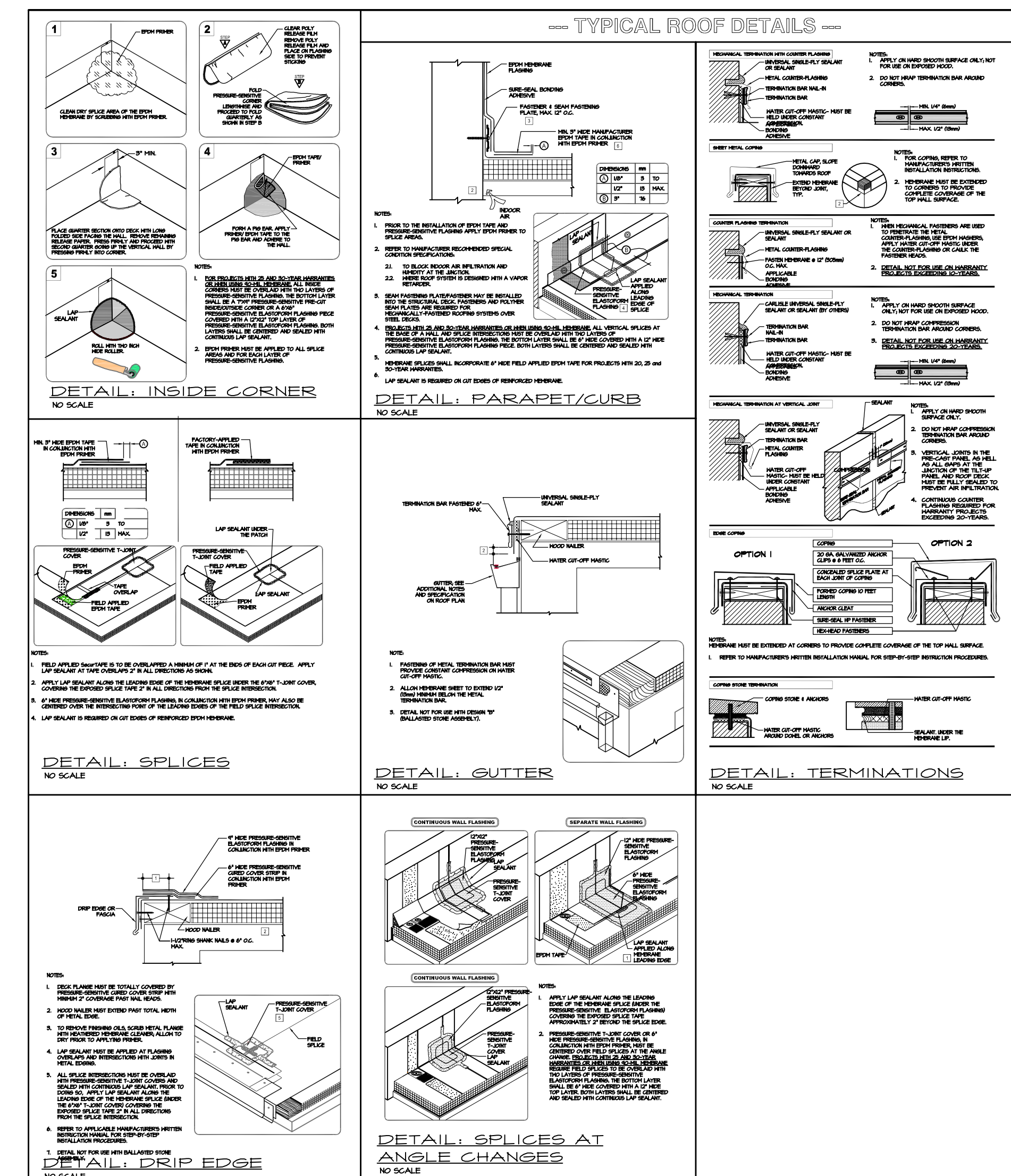


OPTIONAL 2ND FLOOR DECK LAYOUT

1/4" = 1'-0"

5

G.C. TO PROVIDE PRICING OPTION TO OWNER TO REMOVE CLOSET AND SLIDE DOOR TOWARDS EXTERIOR AND ADD EQUAL SIZED SIDELITE; CONTINUE DECK WIDTH TO EXTERIOR WALL; PROVIDE EQUALLY SPACED 6x6 POSTS WITH (3)-3/4"x9-1/4" BEAMS BETWEEN AND ROOF RAFTERS TO CONTINUE TO FULL WIDTH OF BUILDING AND BEAR ON THE PROPOSED BEAMS AND POSTS



dc DESIGN GROUP

ARCHITECTURE . INTERIORS . PLANNING
www.dcdesigngroup.net
WASHINGTON, D.C. - MARYLAND - PENNSYLVANIA - FLORIDA

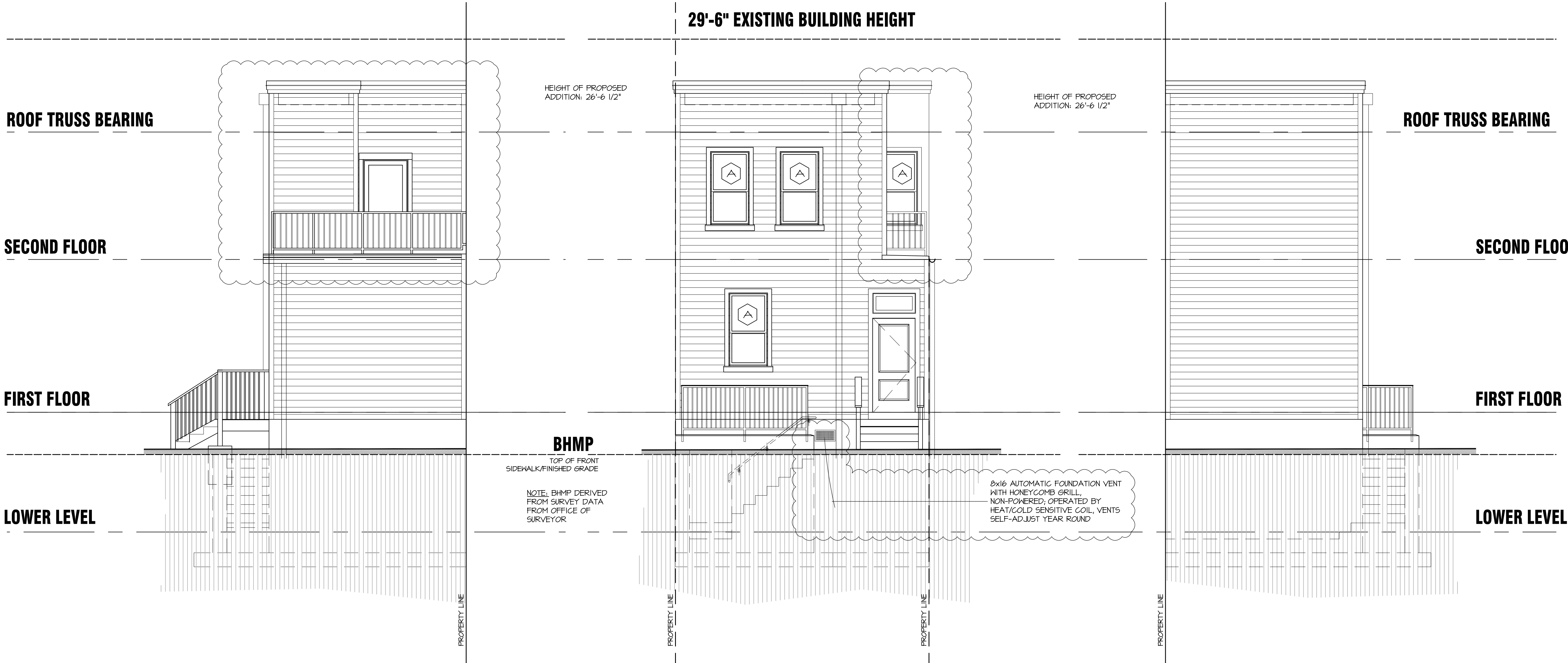
dc DESIGN GROUP

FLOOR PLANS

INTERIOR RENOVATIONS AND NEW ADDITION FOR:
3544 W PLACE NW
3544 W PLACE NW
WASHINGTON D.C. 20007

A.01

Basement/2nd Floor Additions
NOV 2021
EXHIBIT NO.4



I HEREBY CERTIFY THAT THESE DOCUMENTS WERE PREPARED OR APPROVED BY ME, AND THAT I AM A DULY LICENSED PROFESSIONAL ENGINEER UNDER THE LAWS OF THE DISTRICT OF COLUMBIA. LICENSE NO. 900010 EXPIRATION DATE: 8/31/2024.

SIDE ELEVATION

1/4" = 1'-0"

1

REAR ELEVATION

1/4" = 1'-0"

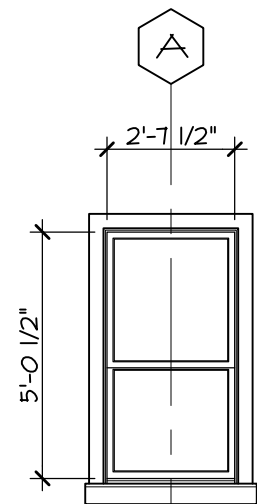
2

SIDE ELEVATION

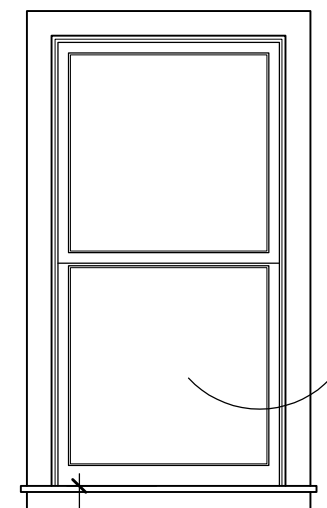
1/4" = 1'-0"

3

EXTERIOR WINDOW SCHEDULE



WINDOW TYPE "A"
ALUMINUM CLAD WOOD WINDOW BY PELLA WINDOWS & DOORS
SINGLE HUNG WINDOW IN NEW OPENING - MEETS EMERGENCY RESCUE AND EGRESS REQUIREMENTS



TYPICAL EMERGENCY EGRESS DETAIL
SCALE: NOT TO SCALE

- NOTES:
1. ALL EXISTING WINDOWS TO REMAIN
 2. EACH BEDROOM IS EQUIPPED WITH AT LEAST ONE EGRESS WINDOW PER WINDOW SCHEDULE

MINIMUM CLEAR OPENABLE AREA: 5.7 SQFT; MINIMUM CLEAR OPENING HEIGHT: 24"; MINIMUM CLEAR OPENING WIDTH: 34"

MAXIMUM DISTANCE FROM FLOOR TO TOP OF SILLPLATE

FINISH FLOOR

GENERAL WINDOW NOTES

PROVIDE NEW BLOCKING AND/OR FRAMING AS REQUIRED FOR INSTALLATION OF NEW WINDOW UNITS; PROVIDE EXTERIOR GRADE COMPOSITE (BORAL OR EQUAL) TRIM AND SHOW SILLS AS INDICATED ON THE DRAWINGS. SEE ELEVATIONS AND SECTIONS FOR ADDITIONAL INFORMATION.

DIMENSIONAL INFORMATION FOR ALL NEW WINDOWS SHALL BE FIELD VERIFIED BY CONTRACTOR PRIOR TO PLACING ANY WINDOW ORDER.

GLAZING: LOW E-4 ARGON FILLED SMART SUN GLASS; PROVIDE SAFETY GLAZING AT ALL WINDOW LOCATIONS WITHIN 24" OF ANY DOOR AND AS OTHERWISE REQUIRED BY THE CODE.

HARDWARE: SELECTION TO BE CONFIRMED BY OWNER/ARCHITECT

EXTENSION JAMBS AS REQUIRED BY THICKNESS OF WALL

BEDROOM WINDOWS TO MEET EMERGENCY ESCAPE AND RESCUE REQUIREMENTS PER IRC 2015. MINIMUM OPENING HEIGHT SHALL BE 24". MINIMUM OPENING WIDTH SHALL BE 20". MINIMUM OPENING AREA SHALL BE 5.7 SQFT.

NOTE: PELLA WINDOWS & DOORS HAVE THE FOLLOWING INSULATION RATINGS:

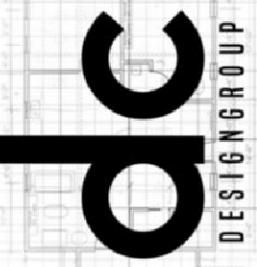
CLAD DIRECT SET WINDOW WITH CLAD SASH:
U-FACTOR - .35
SHGC - .40

FENESTRATION AIR LEAKAGE: WINDOWS SHALL HAVE AN AIR INFILTRATION RATE OF NOT GREATER THAN 0.3 CFM PER SQFT

EXTERIOR ELEVATIONS

INTERIOR RENOVATIONS AND NEW ADDITION FOR:

3544 W PLACE NW
3544 W PLACE NW
WASHINGTON D.C. 20007



dc DESIGN GROUP

ARCHITECTURE . INTERIORS . PLANNING
www.dcdesigngroup.net
WASHINGTON, D.C. - MARYLAND - PENNSYLVANIA - FLORIDA

A.02