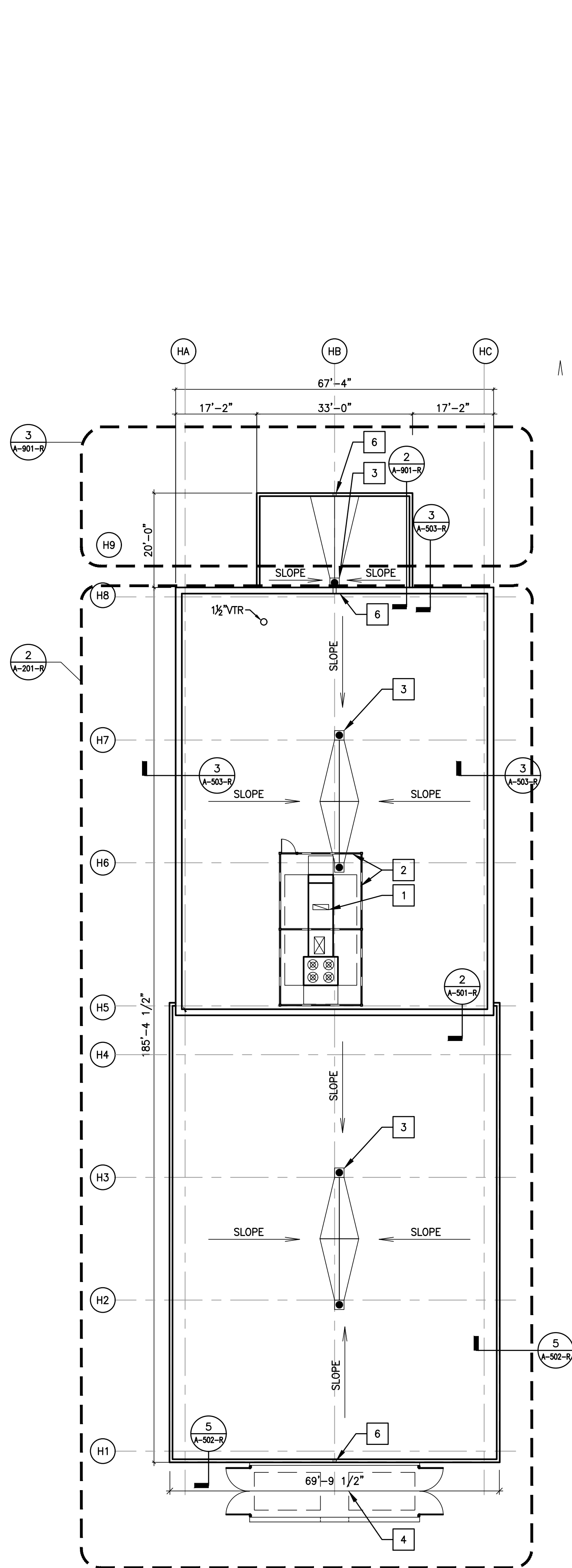
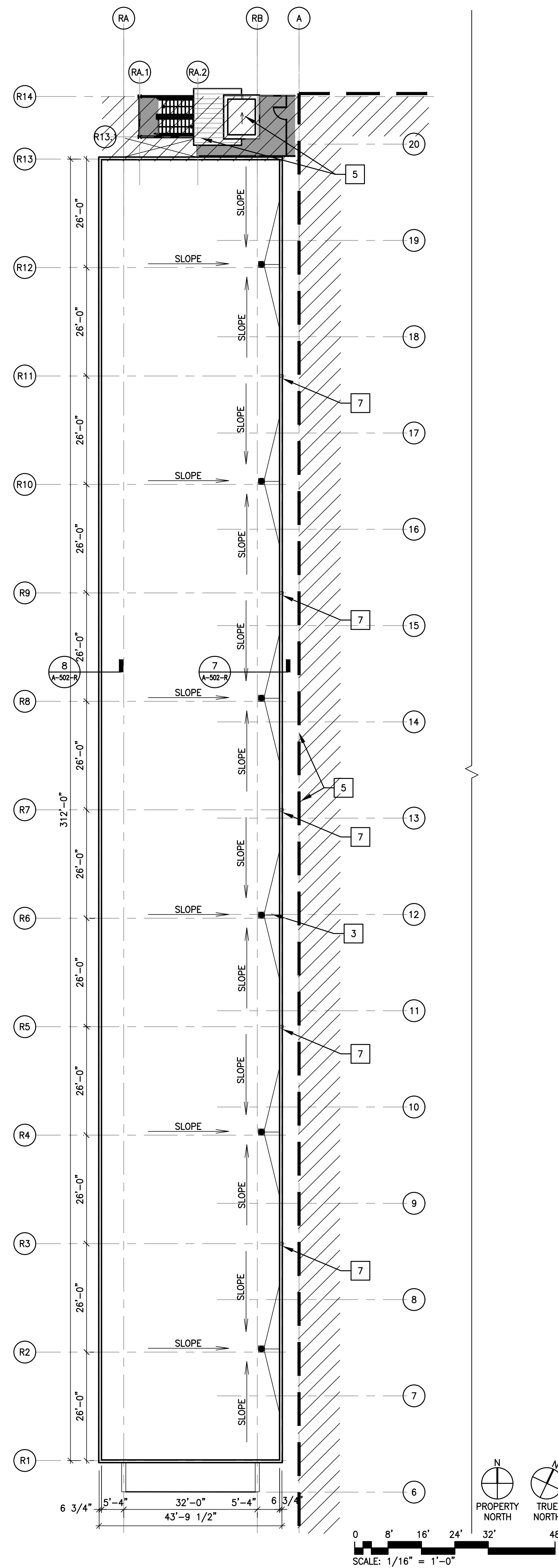


2
A-102-R
HEATED STORAGE AND READY RESERVE FACILITY - SOLAR PLAN



1
A-102-R
HEATED STORAGE AND READY RESERVE FACILITY - ROOF PLAN
SCALE: 1/16" = 1'-0"



PERMIT SUBMISSION
SCALE: 1/16" = 1'-0"

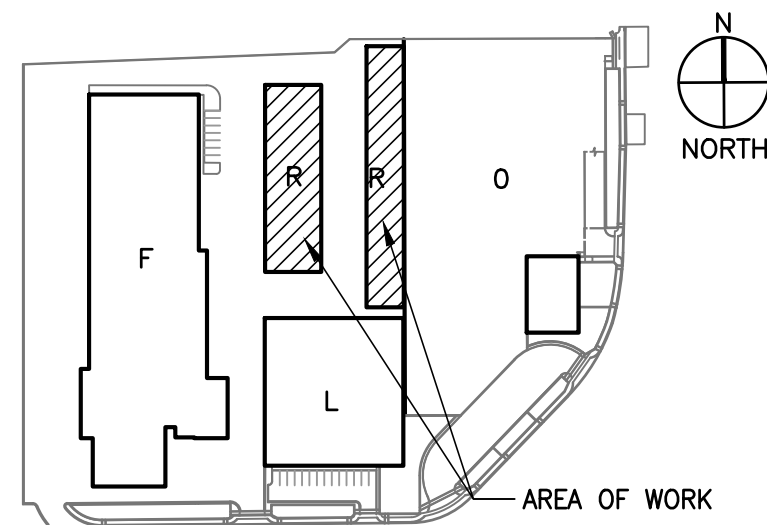
GENERAL NOTES

1. REFER TO G-005 FOR SYSTEM NOMENCLATURE.
2. REFER TO A-200-R SERIES SHEETS FOR ENLARGED PLANS
3. REFER TO A-300-R SERIES SHEETS FOR ELEVATIONS AND SECTIONS.
4. REFER TO A-600-R SERIES SHEETS FOR FINISH SCHEDULE AND PLANS.
5. REFER TO A-700-R SERIES SHEETS FOR FURNITURE SCHEDULE AND PLANS.
6. REFER TO Q-SERIES SHEETS FOR EQUIPMENT.
7. COORDINATE UNDER SLAB UTILITIES AND EQUIPMENT WITH ALL DISCIPLINES.
8. REFER TO SHEET A-503-R, WALL TYPES.
9. RELATIVE FLOOR SLAB ELEVATION FOR HEATED STORAGE IS 28'-6" ABOVE SEA LEVEL, U.O.N.
10. RELATIVE FLOOR SLAB ELEVATION FOR READY RESERVE VARIES, SEE PLANS AND CIVIL DRAWINGS
11. REFER TO CIVIL DRAWINGS FOR PHASING INFORMATION
12. REFER TO ELECTRICAL DRAWINGS FOR LIGHTNING PROTECTION.
13. ROOF DECK FOLLOWS INCREMENTALLY SLOPING BEAMS BY GRAVITY FORCED DEFLECTION. TOP SURFACE OF ROOF DECK IS CONCAVED PAN WITH NO VERTEX. REFER TO STRUCTURAL FOR ROOF DECK SPOT ELEVATIONS.
14. PHOTOVOLTAIC ARRAY SYSTEM - IN ITS ENTIRETY TO BE PROVIDED UNDER SEPARATE CONTRACT. PROVIDE CONDUIT AND PATHWAYS ONLY.
15. SOLAR PANEL LAYOUT IS SHOWN FOR INFORMATION ONLY. PATHWAYS ARE ONLY INCLUDED IN BASE BID.
16. THE PHOTOVOLTAIC ARRAY SYSTEM SHALL PROVIDE AN ANNUAL ENERGY PRODUCTION EQUIVALENT OF NOT LESS THAN 6.0 kWh/SQFT MULTIPLIED BY 25,000 SQ.FT. GROSS ROOF AREA
17. SOLAR PANEL OUTPUT SHALL BE 520kW2 FOR THE ENTIRE CAMPUS.

KEYNOTES

- | | |
|---|---------------------------------------|
| 1 | MECHANICAL EQUIPMENT, R.M.D. |
| 2 | MECHANICAL SCREEN |
| 3 | ROOF DRAIN, R.P.D. |
| 4 | TRASH AREA |
| 5 | OSSE STRUCTURE, BUILT DURING PHASE A |
| 6 | OVERFLOW SCUPPER |
| 7 | MAINTAIN MIN. CLEARANCE 6'-0" TYPICAL |

KEYPLAN



#	Date	Change Description

DGS BUILD MAINTAIN SUSTAIN
FEMS FLEET MAINTENANCE FACILITY
BLUE PLAINS - D.C. VILLAGE LANE SW., WASHINGTON D.C. 20032
FOR THE GOVERNMENT OF THE DISTRICT OF COLUMBIA

ALPHATEC PC
ENGINEERS ARCHITECTS PLANNERS
1025 18TH STREET N.W. WASHINGTON, D.C. 20036
TEL. 202/797-5000 FAX 202/797-5003

SUB-CONSULTANT:	SEAL:	Project NO. SEE PLOT STAMP
Dwg. Coord.:		Tech. Coord.:
HEATED STORAGE AND READY RESERVE FACILITY - ROOF PLAN		A-102-R
PERMIT SUBMISSION		10/12/2023