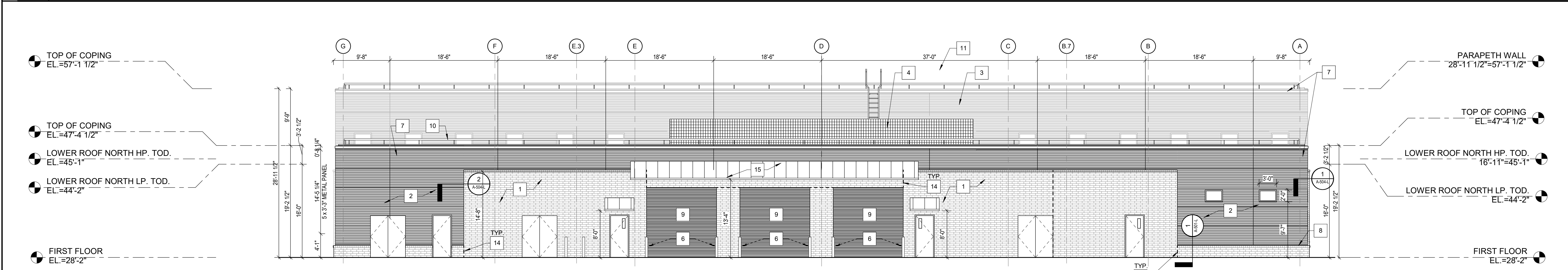
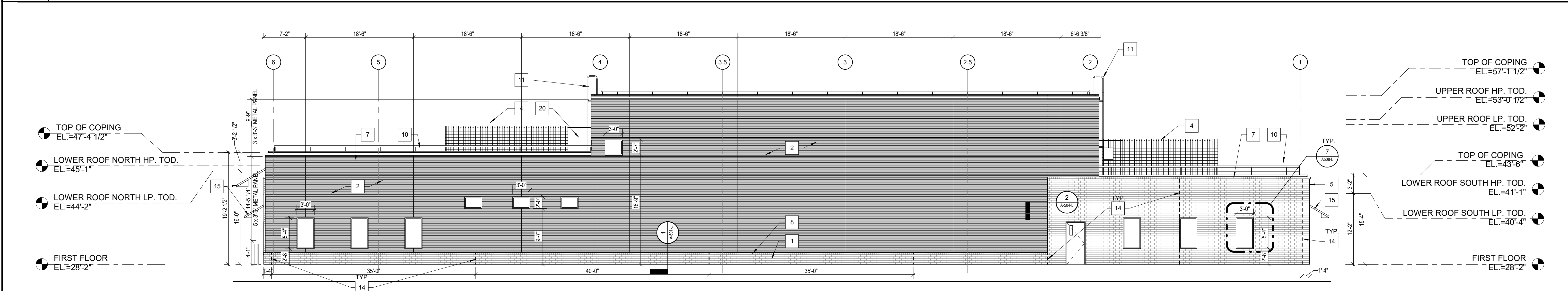


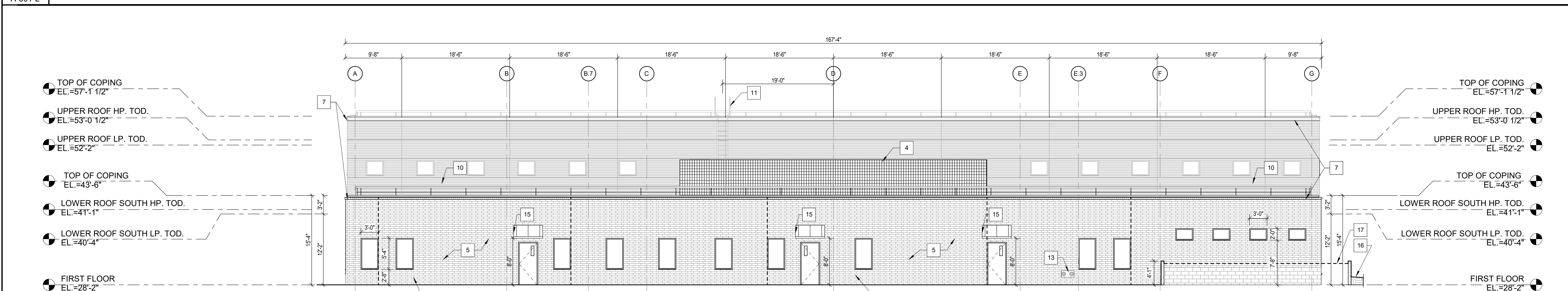
4
A-301-L
EAST ELEVATION
SCALE: 1/8" = 1'-0"



3
A-301-L
NORTH ELEVATION
SCALE: 1/8" = 1'-0"



2
A-301-L
WEST ELEVATION
SCALE: 1/8" = 1'-0"



1
A-301-L
SOUTH ELEVATION
SCALE: 1/8" = 1'-0"

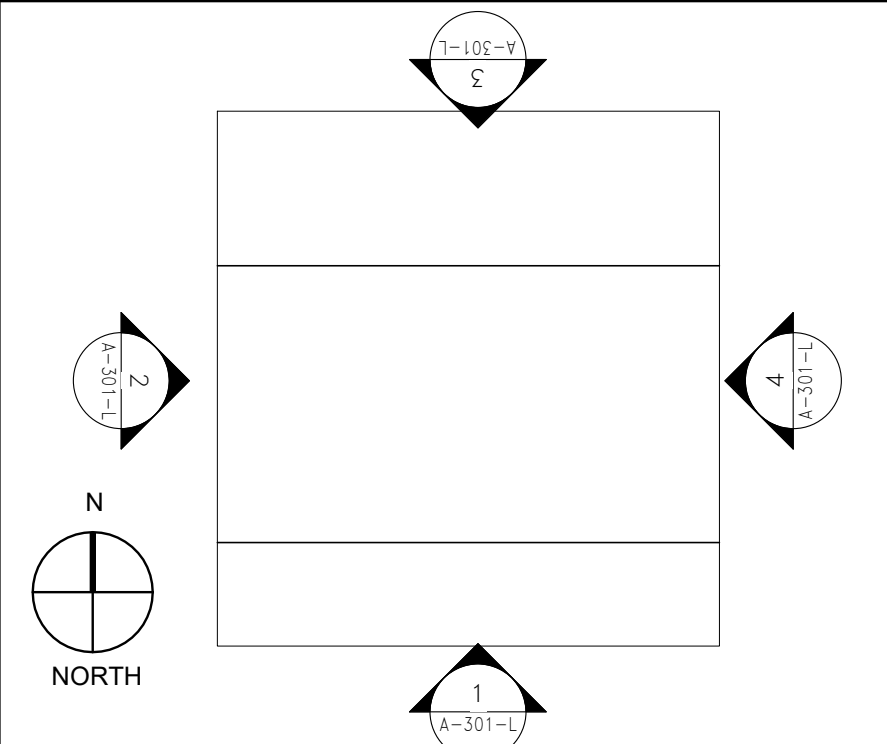
GENERAL NOTES

1. REFER TO ELECTRICAL SHEETS FOR LIGHTNING PROTECTION.
2. REFER TO CIVIL DRAWINGS FOR GRADE LEVELS, GRADE LEVELS ARE SHOWN FOR REFERENCE ONLY.
3. SEE SHEET C-005 FOR SYSTEM NOMENCLATURE.
4. WINDOW DIMENSIONS ARE TYPICAL FOR EACH WINDOW TYPE, REFER TO SHEET A-508-L FOR OPENING DETAILS.
5. FIXED WINDOW SHALL BE GLAZED WITH GL-2 AND ENTRANCE DOORS AND SIDE LIGHTS TO BE GLAZED GL-1 OPAQUE DOOR U=0.40, RUBBER DOOR U=0.40
6. REFER TO CIVIL DRAWINGS FOR GRADE LEVELS, GRADE LEVELS ARE FOR REFERENCE ONLY.
7. SLOPE GRADE AWAY FROM BUILDING.
8. ALL DATUM ELEVATIONS ARE IN REFERENCE TO THE TOP OF DECKING U.O.N.
9. REFER TO GENERAL SHEETS FOR SIGNAGE

KEY NOTES

- 1 WALL TYPE 1, REFER TO A-502-L
- 2 WALL TYPE 2B, REFER TO A-502-L
- 3 BUILDING BEYOND, REFER TO PLANS
- 4 MECHANICAL EQUIPMENT SCREEN, REFER TO A-505-L
- 5 WALL TYPE 5, REFER TO A-502-L
- 6 BOLLARD, REFER TO SITE DETAILS A-901-L
- 7 TOP OF COPING
- 8 TOP OF BRICK
- 9 ROLL-UP DOOR, REFER TO DOOR SCHEDULE AND 4/A-501-L
- 10 GALVANIZED STEEL RAILING, REFER TO PARAPET DETAILS
- 11 LADDER ROOF ACCESS, PROVIDE SUPPORT PLATE MOUNTED TO CMU WALL AS REQUIRED
- 12 SEE CIVIL DRAWINGS FOR PLANTER INFORMATION
- 13 F.D.C.
- 14 EXPANSION JOINT, REFER TO 5/A-503-L
- 15 CANOPY STRUCTURE, REFER TO A-402-L
- 16 BIORETENTION AREA REFER TO CIVIL DRAWINGS
- 17 PLANTER, NOT SHOWN FOR CLARITY
- 18 AREAWAY FILLED WITH GRAVEL, NOT SHOWN FOR CLARITY
- 19 RETAINING WALL
- 20 NO PANEL INFILL MIN 4', PROVIDE ACCESS TO ENCLOSURE


KEY PLAN



#	Date	Change Description

DGS BUILD MAINTAIN SUSTAIN
FEMS FLEET MAINTENANCE FACILITY
BLUE PLAINS - D.C. VILLAGE LANE SW, WASHINGTON D.C. 20032
FOR THE GOVERNMENT OF THE DISTRICT OF COLUMBIA

ALPHATEC PC
ENGINEERS ARCHITECTS PLANNERS
1625 18TH STREET N.W. WASHINGTON, D.C. 20036
TEL 202/797-5000 FAX 202/797-5000

SUB-CONSULTANT: 

Dwg. Coord.: RB Tech. Coord.: JK Project NO.: SEE PLOT STAMP
ELEVATIONS
PERMIT SUBMISSION
A-301-L
30/08/2023
10/9/2023 4:17:00 PM