

GENERAL NOTES

1. REFER TO E-119 AND E-120 FOR LIGHTNING PROTECTION.
2. SEE SHEET G-005 FOR SYSTEM NOMENCLATURE.
3. WINDOW DIMENSIONS ARE TYPICAL FOR EACH WINDOW TYPE., REFER TO SHEET A-512-F.
4. REFER TO CIVIL DRAWINGS FOR GRADE LEVELS, GRADE LEVELS ARE FOR REFERENCE ONLY.
5. SLOPE GRADE AWAY FROM BUILDING.
6. ALL DATUM ELEVATIONS ARE IN REFERENCE TO THE TOP OF DECKING FOR ROOF LEVELS AND TOP OF STRUCTURAL SLAB FOR INDIVIDUAL FLOORS.
4. ALL EXTERIOR WINDOWS TO BE GLAZED ITH GL-1 AND ALL ENTRANCE DOORS AND SIDE LITES TO BE GLAZED WITH GL-1.
5. OPAQUE AND RUBBER DOORS U-0.40.
6. REFER TO 1/A-501-F FOR PANEL MODULE INFORMATION

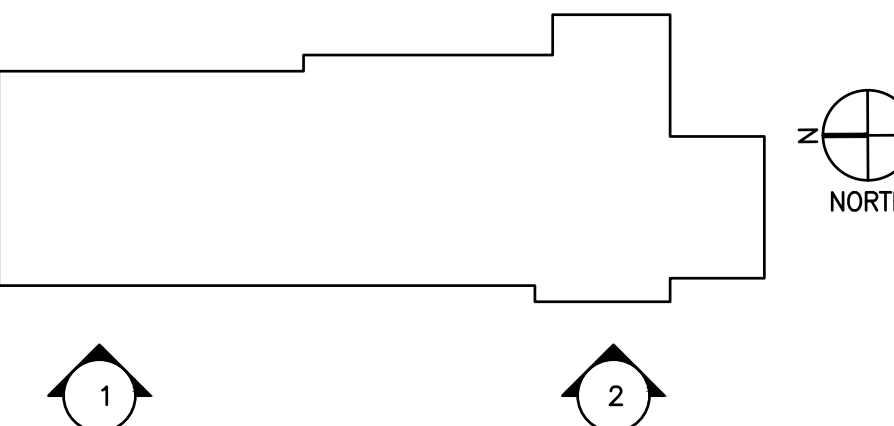
KEY NOTES

- |    |   |
|----|---|
| 1  | WALL TYPE 1, REFER TO DETAIL 1/A-504-F  |
| 2  | ROLL-UP DOOR, REFER TO DOOR SCHEDULE.   |
| 3  | WALL TYPE 2A, REFER TO DETAIL 2/A-504-F   |
| 4  | LOUVERED WALL SYSTEM, REFER TO 5/A-507-F.   |
| 5  | LOUVERED MECHANICAL SCREEN, REFER TO SHEET A-105-F.   |
| 6  | WALL TYPE 3, REFER TO DETAIL 3/A-504-F  |
| 7  | WALL TYPE 5, REFER TO DETAIL 4/A-504-F  |
| 8  | PUNCHED CLERESTORY WINDOWS, REFER TO ELEVATIONS AND 5/A-512-F.  |
| 9  | BOLLARD, REFER TO 4/A-514-F.  |
| 10 | VEHICLE FUME EXHAUST, R.M.D.  |
| 11 | GALVANIZED STEEL RAILING, REFER TO STRUCTURAL DRAWINGS AND SHEET A-506-F.                               |
| 12 | RIBBON CLERESTORY WINDOWS, REFER A-205-F, A-207-F, AND A-503-F.   |
| 13 | TOP OF BRICK  |
| 14 | TOP OF COPING   |
| 15 | SHIP LADDER, REFER TO 3/A-515-F.  |
| 16 | NOT USED  |
| 17 | PROVIDE GALVANIZED STEEL LOOSE LINTEL AT WINDOW OPENING WIDTH LESS THAN 6'-0", SEE STRUCTURAL DRAWINGS. |
| 18 | WALL TYPE 6, REFER TO DETAIL 5/A-504-F  |
| 19 | WALL TYPE 7, REFER TO DETAIL 6/A-504-F  |
| 20 | ENTRANCE CANOPY, REFER TO SHEET A-514-F.  |
| 21 | MASONRY CONTROL JOINT SPACE A MAXIMUM OF 30'-0" O.C., REFER TO DETAIL 4/A-512-F                         |

LEGEND

- |  |  |
|--|--|
|  | MWP-5A - PNT-1: PPG UC106683F DURANAR SUNSTORM GALAXY SILVER |
|  | MWP-5B - PNT-2: PPG UC55026 DURANAR BRIGHT WHITE             |

KEY PLAN



#	Date	Change Description

**DGS BUILD**  
DESIGN GROUP SERVICES

**MAINTAIN SUSTAIN**

FEMS FLEET MAINTENANCE FACILITY

BLUE PLAINS, D.C. VILLAGE LANE SW, WASHINGTON D.C. 20032

FOR THE GOVERNMENT OF THE DISTRICT OF COLUMBIA

**ALPHATEC PC**  
**ENGINEERS ARCHITECTS PLANNERS**

1626 18TH STREET N.W.  
WASHINGTON, D.C. 20036  
TEL 202/797-8000  
FAX 202/797-8003

SUB-CONSULTANT:

SEA:

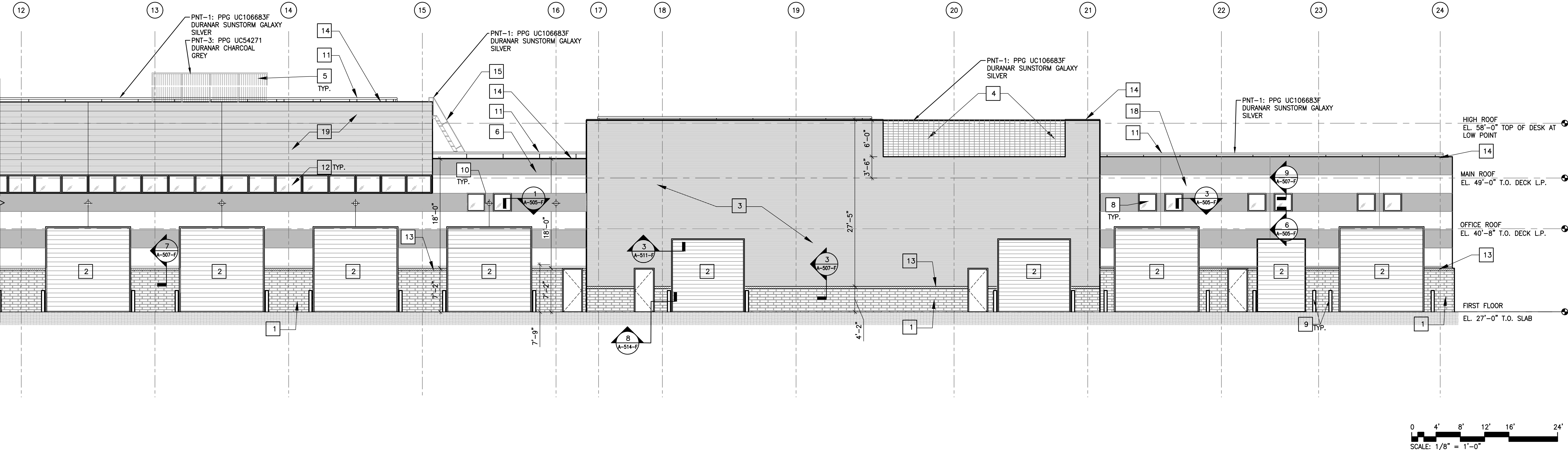
Dwg. Coord.:	Tech. Coord.:	Project NO.:	SEE PLOT STAMP
--------------	---------------	--------------	----------------

ELEVATIONS - FEMS FLEET MAINTENANCE FACILITY

PERMIT SUBMISSION

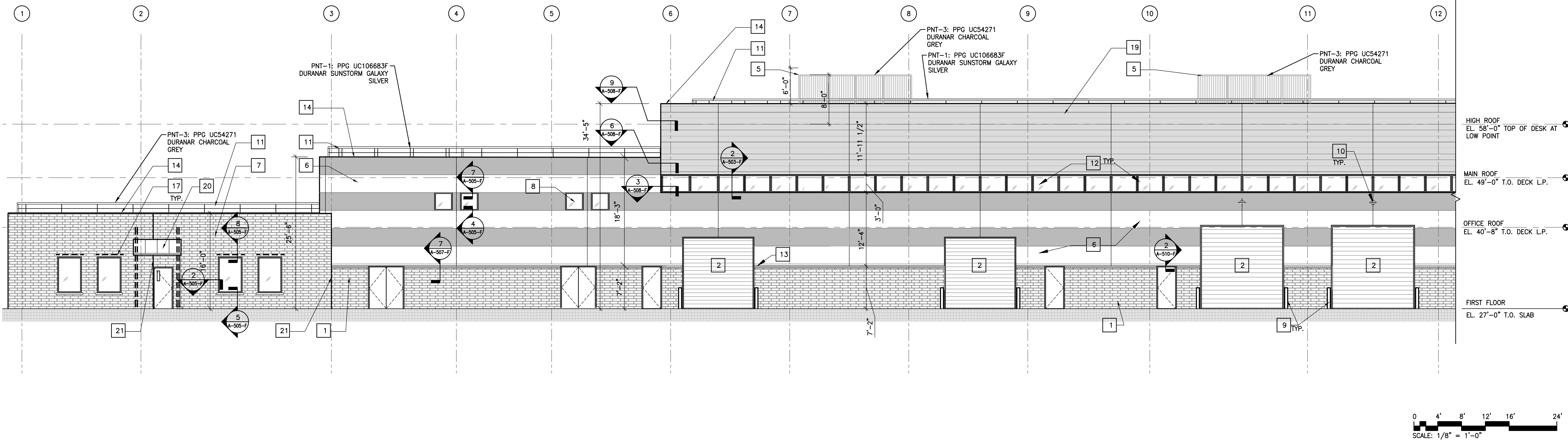
10/12/2023

A-303-F



WEST ELEVATION - FEMS FLEET MAINTENANCE FACILITY

SCALE: 1/8" = 1'-0"



WEST ELEVATION - FEMS FLEET MAINTENANCE FACILITY

SCALE: 1/8" = 1'-0"

PERMIT SUBMISSION