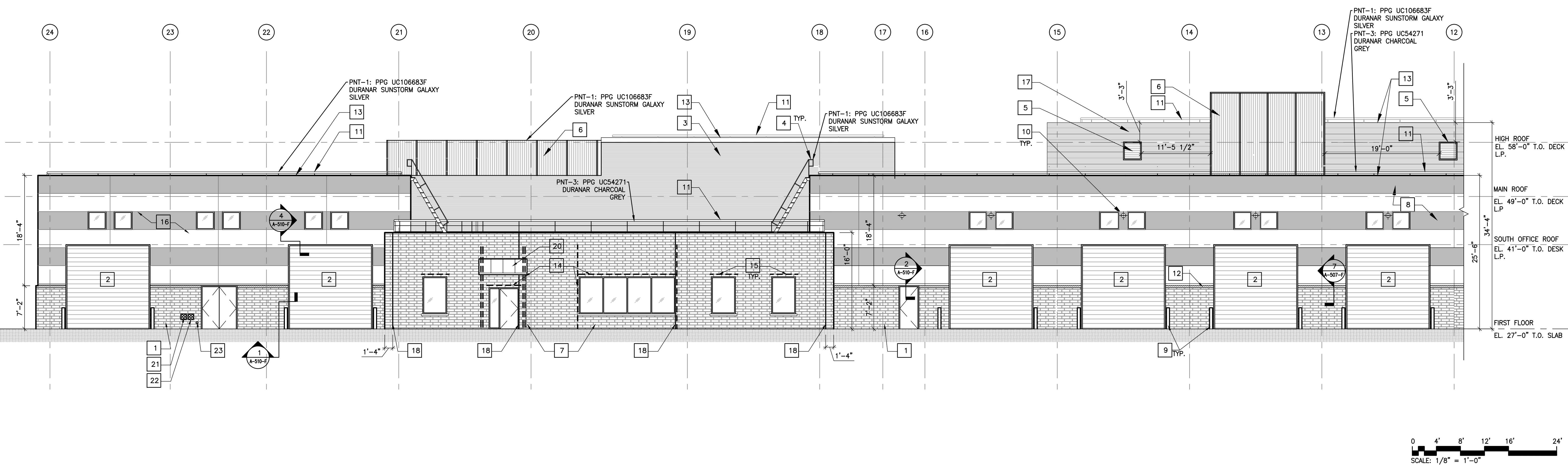


EAST ELEVATION - FEMS FLEET MAINTENANCE FACILITY

SCALE: 1/8" = 1'-0"



EAST ELEVATION - FEMS FLEET MAINTENANCE FACILITY

SCALE: 1/8" = 1'-0"

### GENERAL NOTES

1. REFER TO E-119 AND E-120 FOR LIGHTNING PROTECTION.
2. SEE SHEET G-005 FOR SYSTEM NOMENCLATURE.
3. WINDOW DIMENSIONS ARE TYPICAL FOR EACH WINDOW TYPE. REFER TO SHEETS A-505-F AND A-512-F.
4. REFER TO CIVIL DRAWINGS FOR GRADE LEVELS, GRADE LEVELS ARE FOR REFERENCE ONLY.
5. SLOPE GRADE AWAY FROM BUILDING.
6. ALL DATUM ELEVATIONS ARE IN REFERENCE TO THE TOP OF DECKING FOR ROOF LEVELS AND TOP OF STRUCTURAL SLAB FOR INDIVIDUAL FLOORS.
7. ALL EXTERIOR WINDOWS TO BE GLAZED WITH GL-1 AND ALL ENTRANCE DOORS AND SIDE LITES TO BE GLAZED WITH GL-1.
8. OPAQUE AND RUBBER DOORS U-0.40.
9. REFER TO 1/A-501-F FOR PANEL MODULE INFORMATION.

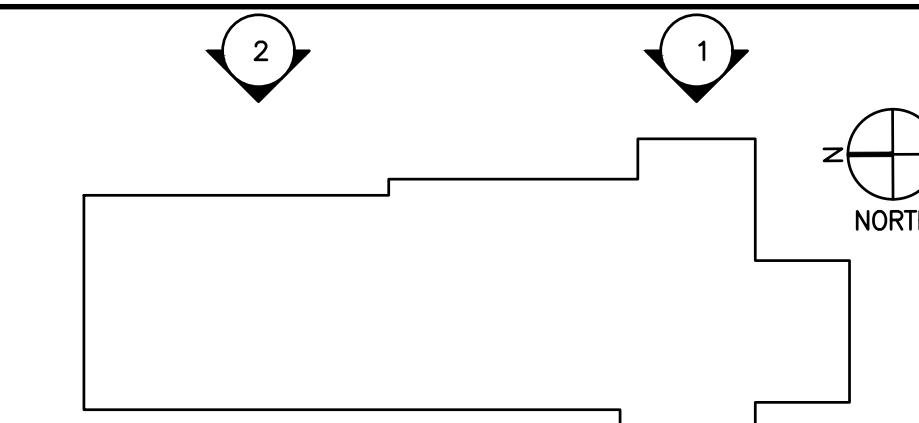
### KEY NOTES

- 1 WALL TYPE 1, REFER TO DETAIL 1/A-504-F
- 2 ROLL-UP DOOR, REFER TO DOOR SCHEDULE.
- 3 WALL TYPE 2A, REFER TO DETAIL 2/A-504-F
- 4 SHIP LADDER, REFER TO 3/A-515-F.
- 5 3'-0" X 3'-0" MECHANICAL LOUVER, R.M.D. COORDINATE LOUVER LOCATIONS WITH MECHANICAL DUCTWORK.
- 6 MECHANICAL SCREEN, REFER TO SHEETS A-404-F AND A-511-F.
- 7 WALL TYPE 5, REFER TO DETAIL 4/A-504-F
- 8 WALL TYPE 3, REFER TO DETAIL 3/A-504-F
- 9 BOLLARD, REFER TO 4/A-514-F.
- 10 VEHICLE FUME EXHAUST, R.M.D. AND 1/A-503-F
- 11 GALVANIZED STEEL HANDRAIL, REFER TO PARAPET DETAILS ON SHEET A-506-F
- 12 TOP OF BRICK
- 13 TOP OF COPING
- 14 PROVIDE STEEL SUPPORT FRAME AT WINDOW OPENING WIDTH GREATER THAN 6'-0", SEE STRUCTURAL DRAWINGS.
- 15 PROVIDE GALVANIZED STEEL LOOSE LINTEL AT WINDOW OPENING WIDTH LESS THAN 6'-0", SEE STRUCTURAL DRAWINGS.
- 16 WALL TYPE 6, REFER TO DETAIL 5/A-504-F
- 17 WALL TYPE 7, REFER TO DETAIL 6/A-504-F
- 18 MASONRY CONTROL JOINT SPACE A MAXIMUM OF 30'-0" O.C., REFER TO DETAIL 1/A-512-F
- 19 FROSTED WINDOW FILM
- 20 ENTRANCE CANOPY, REFER TO SHEET A-514-F.
- 21 4-WAY FIRE DEPARTMENT TEST HEADER AT 24" A.F.F., R.M.D.
- 22 4-WAY FIRE DEPARTMENT CONNECTION AT 24" A.F.F., R.M.D.
- 23 SPRINKLER EXPRESS DRAIN AT 18" A.F.F.
- 24 6" DIA. EXHAUST PENETRATION, R.M.D.

### LEGEND

- MWP-5A - PNT-1: PPG UC106683F DURANAR SUNSTORM GALAXY SILVER
- MWP-5B - PNT-2: PPG UC55026 DURANAR BRIGHT WHITE

### KEY PLAN



#	Date	Change Description

**DGS BUILD MAINTAIN SUSTAIN**

FEMS FLEET MAINTENANCE FACILITY

BLUE PLANS - D.C. VILLAGE LANE SW, WASHINGTON D.C. 20032

FOR THE GOVERNMENT OF THE DISTRICT OF COLUMBIA

**ALPHATEC PC**

ENGINEERS ARCHITECTS PLANNERS

1626 18TH STREET N.W. WASHINGTON, D.C. 20036

TEL: 202/797-8000 FAX: 202/797-8003

SUB-CONSULTANT:

SEA:

DISTRICT OF COLUMBIA ARCHITECT

Dwg. Coord.:	Tech. Coord.:	Project NO.:	SEE PLOT STAMP
--------------	---------------	--------------	----------------

ELEVATIONS - FEMS FLEET MAINTENANCE FACILITY

PERMIT SUBMISSION

10/12/2023