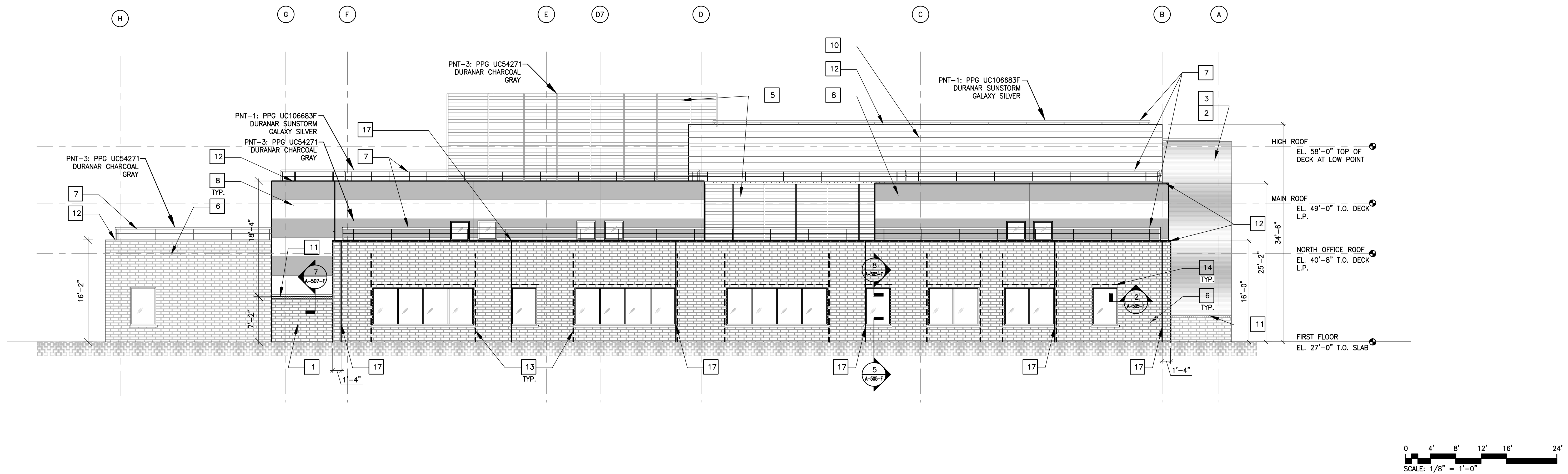


SOUTH ELEVATION - FEMS FLEET MAINTENANCE FACILITY

SCALE: 1/8" = 1'-0"



NORTH ELEVATION - FEMS FLEET MAINTENANCE FACILITY

SCALE: 1/8" = 1'-0"

GENERAL NOTES

1. REFER TO E-119 AND E-120 FOR LIGHTNING PROTECTION.
2. SEE SHEET G-005 FOR SYSTEM NOMENCLATURE.
3. WINDOW DIMENSIONS ARE TYPICAL FOR EACH WINDOW TYPE, REFER TO SHEET A-512-F.
4. REFER TO CIVIL DRAWINGS FOR GRADE LEVELS, GRADE LEVELS ARE FOR REFERENCE ONLY.
5. SLOPE GRADE AWAY FROM BUILDING.
6. ALL DATUM ELEVATIONS ARE IN REFERENCE TO THE TOP OF DECKING FOR ROOF LEVELS AND TOP OF STRUCTURAL SLAB FOR INDIVIDUAL FLOORS.
4. ALL EXTERIOR WINDOWS TO BE GLAZED ITH GL-1 AND ALL ENTRANCE DOORS AND SIDE LITES TO BE GLAZED WITH GL-1.
5. OPAQUE AND RUBBER DOORS U-0.40.
6. REFER TO 1/A-501-F FOR PANEL MODULE DIMENSIONS.

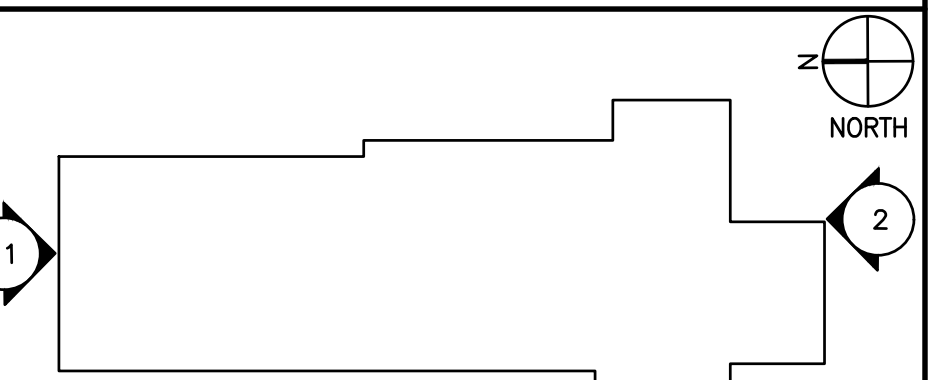
KEY NOTES

- 1 WALL TYPE 1, REFER TO DETAIL 1/A-504-F.
- 2 BUILDING BEYOND, REFER TO PLANS.
- 3 WALL TYPE 2A, REFER TO DETAIL 2/A-504-F
- 4 NOT USED.
- 5 MECHANICAL EQUIPMENT SCREEN, REFER TO SHEETS A-404-F AND A-511-F.
- 6 WALL TYPE 5, REFER TO DETAIL 4/A-504-F
- 7 GALVANIZED STEEL RAILING, REFER TO PARAPET DETAILS ON SHEET A-506-F
- 8 WALL TYPE 3, REFER TO DETAIL 3/A-504-F
- 9 12x12 LOUVER, REFER TO MECHANICAL DRAWINGS.
- 10 WALL TYPE 7, REFER TO DETAIL 6/A-504-F.
- 11 TOP OF BRICK
- 12 TOP OF COPING
- 13 PROVIDE STEEL SUPPORT FRAME AT WINDOW OPENING WIDTH GREATER THAN 6'-0", SEE STRUCTURAL DRAWINGS.
- 14 PROVIDE GALVANIZED STEEL LOOSE LITEL AT WINDOW OPENING WIDTH LESS THAN 6'-0", SEE STRUCTURAL DRAWINGS.
- 15 WALL TYPE 8A, REFER TO DETAIL 7/A-504-F
- 16 WALL TYPE 6, REFER TO DETAIL 5/A-504-F
- 17 MASONRY CONTROL JOINT SPACE A MAXIMUM OF 30'-0" O.C., REFER TO DETAIL 1/A-512-F

LEGEND

- MWP-5A - PNT-1: PPG UC106683F DURANAR SUNSTORM GALAXY SILVER
- MWP-5B - PNT-2: PPG UC55026 DURANAR BRIGHT WHITE

KEY PLAN



#	Date	Change Description

DGS BUILD MAINTAIN SUSTAIN

FEMS FLEET MAINTENANCE FACILITY

BLUE PLAINS - D.C. VILLAGE LANE SW, WASHINGTON D.C. 20032

FOR THE GOVERNMENT OF THE DISTRICT OF COLUMBIA

ALPHATEC PC

ENGINEERS ARCHITECTS PLANNERS

1626 18TH STREET N.W. WASHINGTON, D.C. 20036 TEL 202/797-8000 FAX 202/797-8003

SUB-CONSULTANT:	SEA:
Dwg. Coord.:	Tech. Coord.:
ELEVATIONS - FEMS FLEET MAINTENANCE FACILITY	Project NO: SEE PLOT STAMP
PERMIT SUBMISSION	10/12/2023