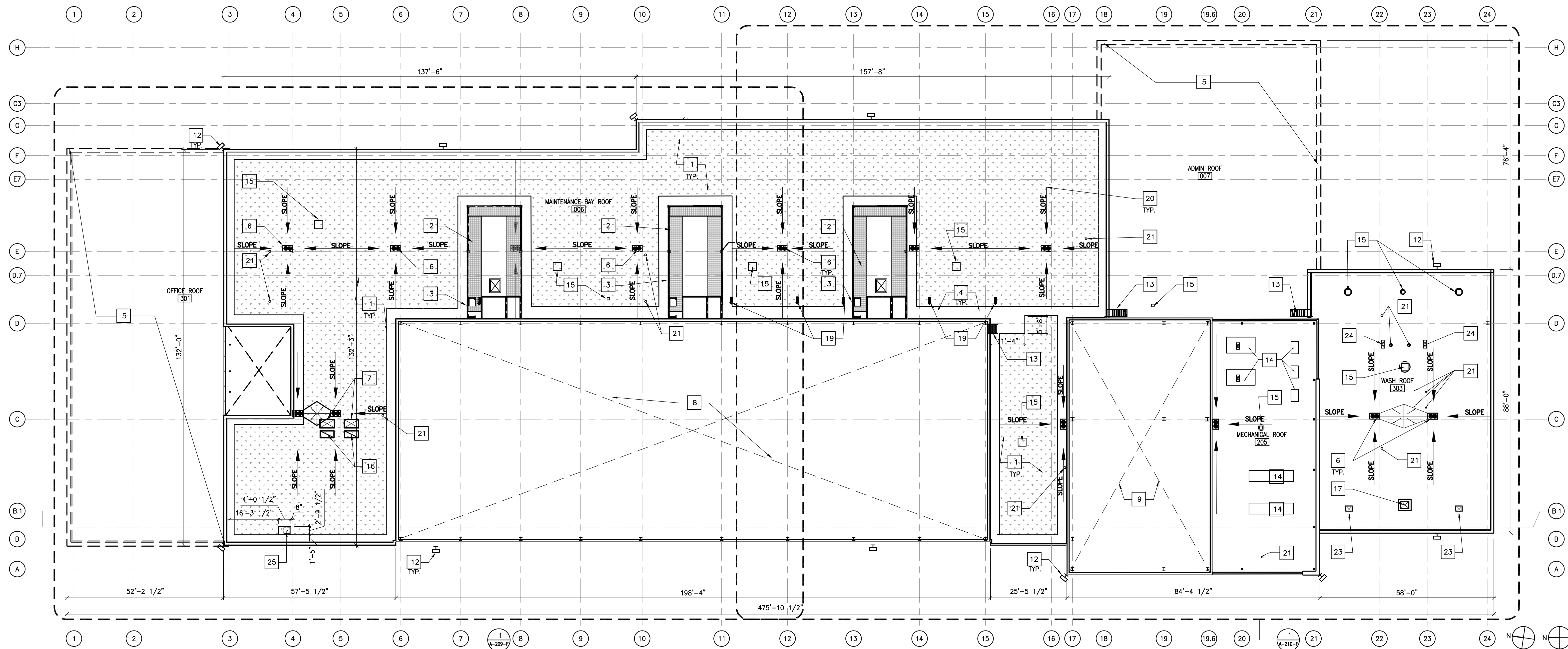


2
A-103-F NEW WORK - FEMS FLEET MAINTENANCE FACILITY - HIGH ROOF PLAN SCALE: 1/16" = 1'-0"



1
A-103-F NEW WORK - FEMS FLEET MAINTENANCE FACILITY - MAIN ROOF PLAN SCALE: 1/16" = 1'-0"

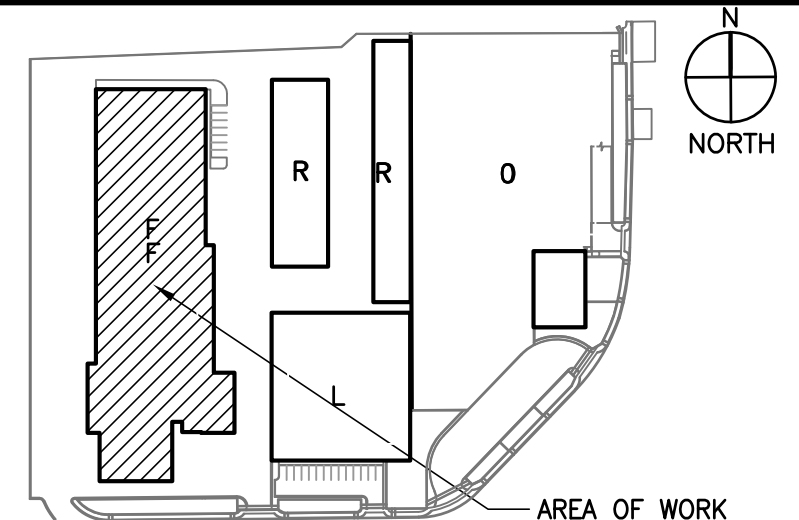
GENERAL NOTES

1. REFER TO G-005 FOR SYSTEM NOMENCLATURE.
2. REFER TO A-200-F SERIES SHEETS FOR ENLARGED PLANS & RCP.
3. REFER TO A-300-F SERIES SHEETS FOR ELEVATIONS & SECTIONS.
4. REFER TO A-400-F SERIES SHEETS FOR ENLARGED PLANS.
5. REFER TO A-500-F SERIES SHEETS FOR DETAILS AND PARTITION TYPES.
6. REFER TO A-600-F SERIES SHEETS FOR FINISH SCHEDULE. REFER TO A-700-F SERIES SHEETS FOR FURNITURE SCHEDULE. REFER TO Q-SERIES SHEETS FOR EQUIPMENT.
7. ROOF DECK FOLLOWS INCREMENTALLY SLOPING BEAMS BY GRAVITY FORCED DEFLECTION. TOP SURFACE OF ROOF DECK IS CONCAVED PAN WITH NO VERTEX. REFER TO STRUCTURAL FOR ROOF DECK SPOT ELEVATIONS.
8. REFER TO A-103.3-F FOR PV PANEL LAYOUT.

KEYNOTES

- 1 GREEN ROOF SYSTEM, REFER TO DETAIL 2/A-511-F.
- 2 STEEL DUNNAGE FOR MECHANICAL EQUIPMENT SUPPORT, REFER TO S-104-F.
- 3 MECHANICAL ENCLOSURE SCREEN, REFER TO DETAIL 5/A-511-F.
- 4 3" GRAVEL WALKWAY, REFER TO DETAIL 10/A-511-F.
- 5 ROOF BELOW, REFER TO SHEETS A-205-F AND A-207-F.
- 6 ROOF DRAIN AND ADJACENT OVERFLOW DRAIN REFER TO DETAIL 9/A-504-F AND MECHANICAL DRAWINGS.
- 7 METAL EQUIPMENT CURB, REFER TO DETAIL 8/A-511-F.
- 8 OPEN TO MAINTENANCE BAYS BELOW
- 9 OPEN TO PARTS STORAGE BELOW
- 10 ROOF BELOW, REFER TO A-209-F AND A-210-F.
- 11 OPEN TO MECHANICAL ROOF BELOW
- 12 EXTERIOR WALL MOUNTED LIGHTING, R.E.D.
- 13 SHIP LADDER FOR ROOF ACCESS, REFER TO DETAIL 3/A-515-F.
- 14 MANUFACTURED METAL PAD FOR MECHANICAL EQUIPMENT, REFER TO MECHANICAL DRAWINGS.
- 15 MECHANICAL ROOF FAN, REFER TO MECHANICAL DRAWINGS.
- 16 GOOSENECK EXHAUST AIR FROM AIR COMPRESSOR, REFER TO MECHANICAL DRAWINGS.
- 17 ROOF VENTILATOR, REFER TO MECHANICAL DRAWINGS.
- 18 PAINT BOOTH EXHAUST, REFER TO 11/A-511-F.
- 19 ROOF PENETRATION FOR VEHICLE FUME EXHAUST, REFER TO MECHANICAL DRAWINGS.
- 20 ROOF SLOPE, REFER TO STRUCTURAL DRAWINGS FOR DECK ELEVATIONS.
- 21 VENT THROUGH ROOF, REFER TO PLUMBING DRAWINGS.
- 22 PAINT BOOTH EXHAUST PENETRATION, REFER TO Q-SERIES DRAWINGS.
- 23 MECHANICAL DUCT PENETRATION, R.M.D.
- 24 GOOSENECK AIR INTAKE, R.M.D.
- 25 ROOF TOP HOOD ENTRY, REFER TO ELECTRICAL DRAWINGS. SEE DETAIL 8/A-511-F FOR FLASHING INFORMATION.

KEYPLAN




#	Date	Change Description

DGS BUILD
DEPARTMENT OF GENERAL SERVICES
MAINTAIN SUSTAIN

FEMS FLEET MAINTENANCE FACILITY
BLUE PLANS - D.C. VILLAGE LANE SW., WASHINGTON D.C. 20032
FOR THE GOVERNMENT OF THE DISTRICT OF COLUMBIA

ALPHATEC PC
ENGINEERS ARCHITECTS PLANNERS
1626 18TH STREET N.W. WASHINGTON, D.C. 20036
TEL: 202/797-8000 FAX: 202/797-8003

SUB-CONSULTANT: 

Dwg. Coord:	Tech. Coord:	Project NO:	SEE PLOT STAMP
-------------	--------------	-------------	----------------

FEMS FLEET MAINTENANCE FACILITY - ROOF PLAN
PERMIT SUBMISSION
10/12/2023
A-103-F