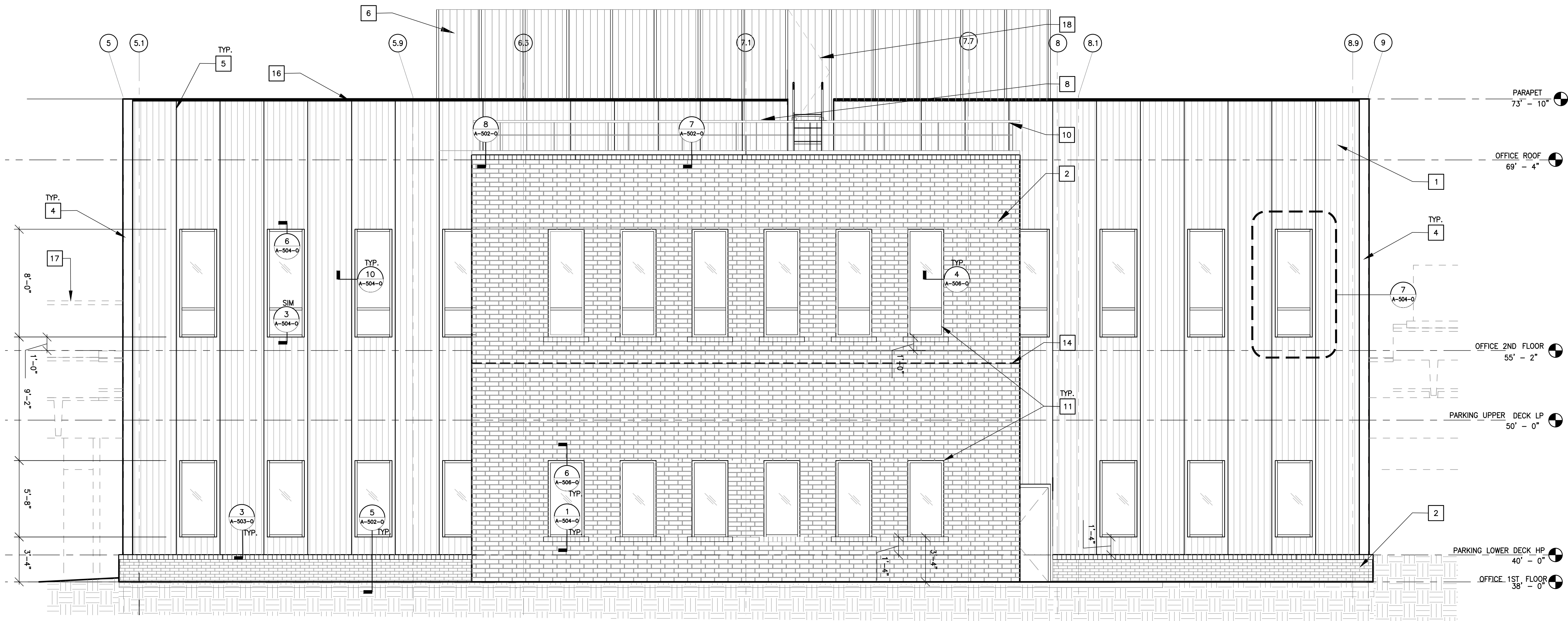


2
A-301-0

OSSE BUILDING - WEST ELEVATION

SCALE : 1/4" = 1'-0"



1
A-301-0

OSSE BUILDING - EAST ELEVATION

SCALE : 1/4" = 1'-0"

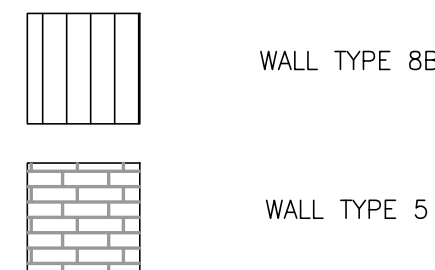
GENERAL NOTES

1. REFER TO CIVIL DRAWINGS FOR GRADE LEVELS. GRADE LEVELS ARE SHOWN FOR REFERENCE ONLY.
2. REFER TO ELECTRICAL DRAWINGS FOR LIGHTNING PROTECTION.
3. SLOPE GRADE AWAY FROM BUILDING.
4. WINDOW DIMENSIONS ARE TYPICAL FOR EACH TYPE OF WINDOW.
5. REFER TO SHEET G-005 FOR SYSTEM NOMENCLATURE.
6. ALL EXTERIOR WINDOWS, DOORS, AND SIDE LIGHTS TO BE GLAZED WITH GL-2, INTERIOR VESTIBULE DOORS AND SIDE LIGHTS TO BE GLAZED WITH 1/2" CLEAR MONOLITHIC GLASS.
7. REFER TO A-910-0 FOR BUILDING SIGNAGE INFORMATION.

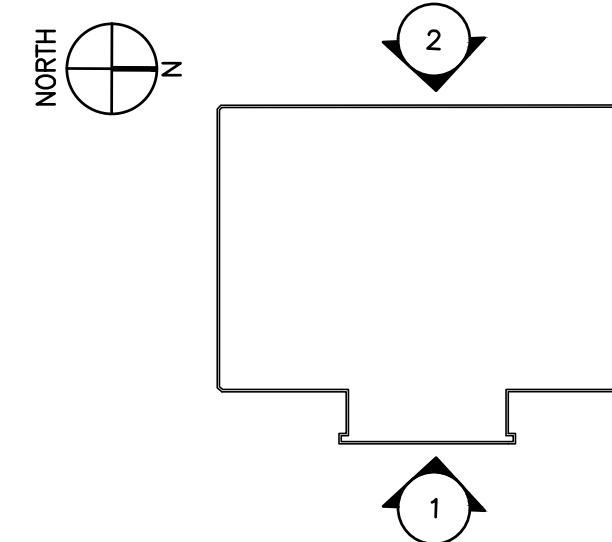
KEY NOTES

- 1 WALL TYPE 8B, REFER TO 2/A501-0
- 2 WALL TYPE 5, REFER TO 1/A501-0
- 3 EXTERIOR ENTRANCE STOREFRONT SYSTEM- PNT-1 : PPG UC10683F DURANAR SUNSTORM GALAXY SILVER
- 4 CHAMFERED CORNER, REFER TO 2/A503-0. PNT-2 : PPG UC55026 DURANAR BRIGHT WHITE
- 5 EDGE COVER TRIM, SEE DETAIL 4/501-0
- 6 MECHANICAL SCREEN, REFER A-510-0 FOR INFO. PNT-3 : PPG UC54271 DURANAR CHARCOAL GREY
- 7 DOUBLE HUNG TRANSCATION WINDOW, REFER TO A-505-0 FOR INFORMATION
- 8 ACCESS LADDER, PNT-2 : PPG UC55026 DURANAR BRIGHT WHITE
- 9 ELECTRICAL ROOM DOOR
- 10 SW-5 RAILING REFER TO A-907-0. PNT-3 : PPG UC54271 DURANAR CHARCOAL GREY
- 11 WINDOW FRAME, - PNT-1 : PPG UC10683F DURANAR SUNSTORM GALAXY SILVER
- 12 CANOPY OUTLINE, REFER TO CANOPY DETAILS ON A-412-0
- 13 STEEL FRAMING TO SUPPORT BRICK VENEER AND CANOPY. SEE STRUCTURAL DRAWING
- 14 PROVIDE SOFT JOINT UNDER SHELF ANGLE SUPPORTED AT EDGE OF FLOOR DECK
- 15 HOT DIP GALVANIZED SHELF ANGLE SUPPORTED AT DECK EDGE. SEE STRUCTURAL DRAWING
- 16 LINE OF PARAPET COPING, REFER TO 3/A-503-0
- 17 PROFILE OF PARKING STRUCTURE
- 18 HINGED ACCESS PANEL

MATERIALS LEGEND



KEY PLAN



#	Date	Change Description

DGS BUILD MAINTAIN SUSTAIN

FEMS FLEET MAINTENANCE FACILITY

BLUE PLAINS - D.C. VILLAGE LANE SW.
WASHINGTON D.C. 20032

FOR THE
GOVERNMENT OF THE DISTRICT
OF COLUMBIA

ALPHATEC PC

ENGINEERS
ARCHITECTS
PLANNERS

1225 8TH STREET NW
WASHINGTON, D.C. 20004
TEL 202/797-5000
FAX 202/797-5003

SUB-CONSULTANT:	SEAL:
Dwg. Coord.:	Tech. Coord.:
Project NO:	SEE PLOT STAMP
OSSE FACILITY ELEVATIONS	A-301-0
PERMIT SUBMISSION	10/12/2023