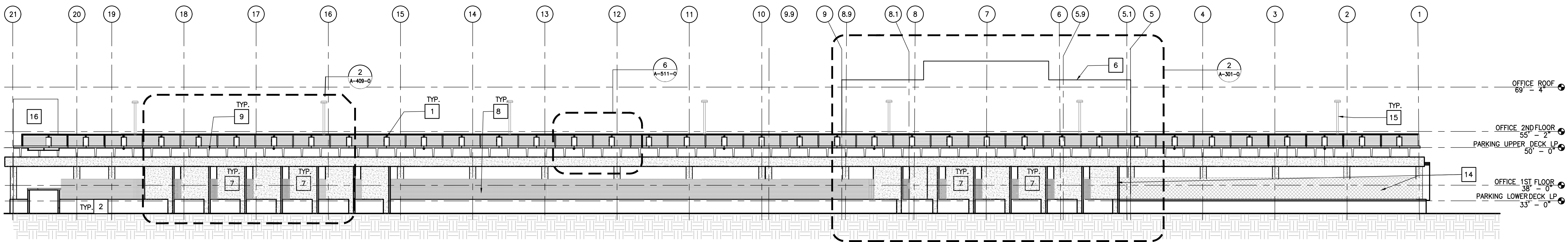


4
A-105-0

ELEVATIONS - OSSE FACILITY AND PARKING STRUCTURE -EAST

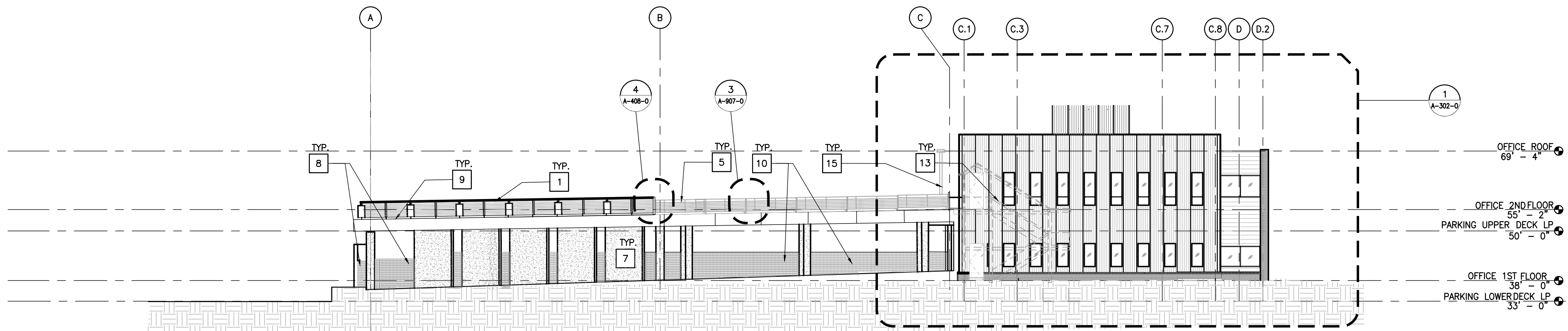
SCALE : 1/16" = 1'-0"



3
A-105-0

ELEVATIONS - OSSE FACILITY AND PARKING STRUCTURE -WEST

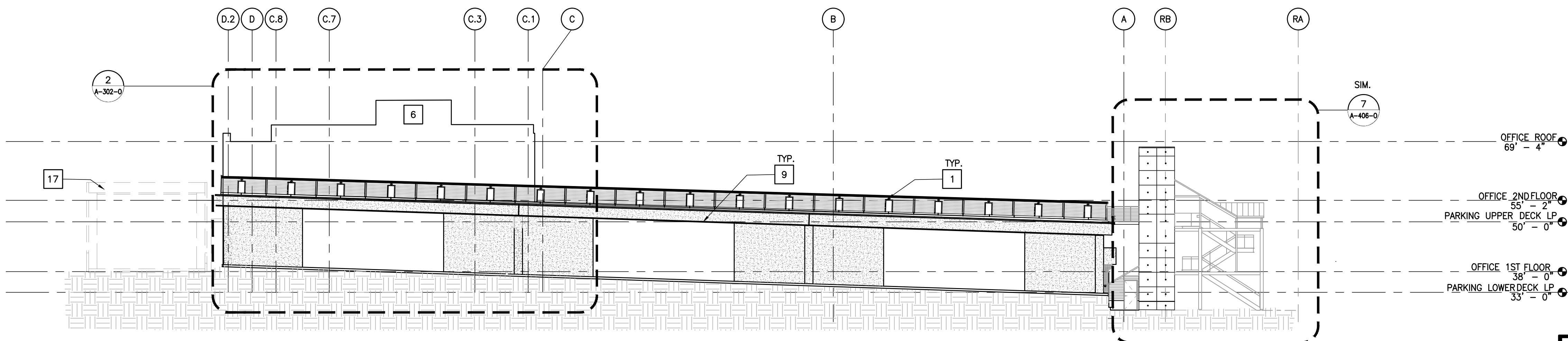
SCALE : 1/16" = 1'-0"



2
A-105-0

ELEVATIONS - OSSE FACILITY AND PARKING STRUCTURE -SOUTH

SCALE : 1/16" = 1'-0"



1
A-105-0

ELEVATIONS - OSSE FACILITY AND PARKING STRUCTURE -NORTH

SCALE : 1/16" = 1'-0"

PERMIT SUBMISSION

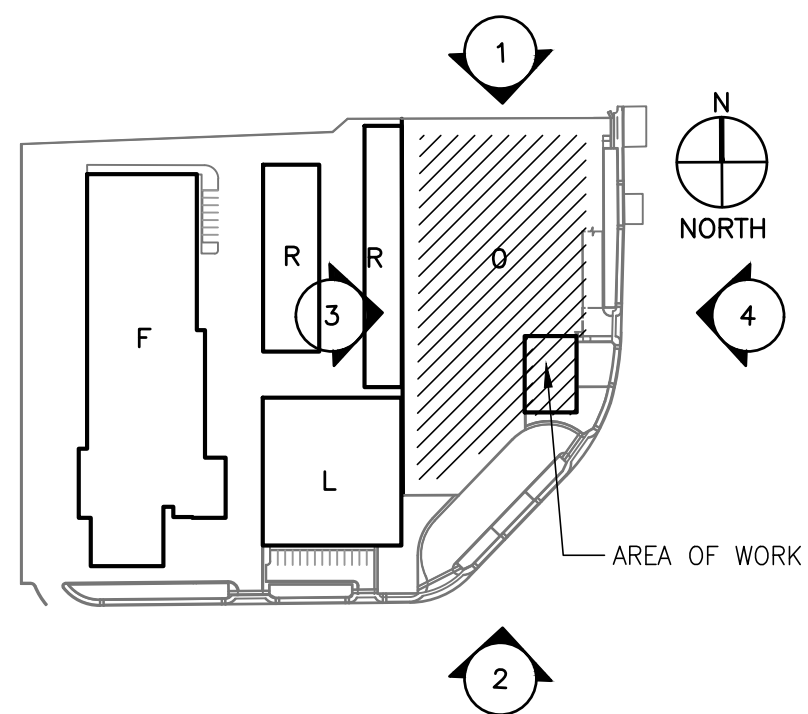
GENERAL NOTES

1. REFER TO A-300-0 SERIES SHEETS FOR DETAILED ELEVATION INFORMATION. KEY ELEVATIONS ARE FOR REFERENCE ONLY.
2. REFER TO ELECTRICAL SHEETS FOR LIGHTNING PROTECTION.
3. REFER TO CIVIL DRAWINGS FOR GRADE LEVELS. GRADE LEVELS ARE SHOWN FOR REFERENCE ONLY.
4. REFER TO A-903-0, & A-904-0 FOR ELEVATION OF OSSE PROPERTY FENCE.
5. REFER TO A-907-0 FOR FENCE DETAILS.
6. FENCE SHOWN DIAGRAMMATICALLY. REFER TO REFERENCED SHEETS FOR DETAILS.

KEY NOTES

- 1 VEHICLE BARRIER SYSTEM, SEE A-511-0 FOR INFO
- 2 RETAINING WALL SEPARATING OSSE AND COVERED PARKING STRUCTURE, REFER TO CIVIL DRAWINGS
- 3 CURB, REFER TO CIVIL
- 4 TOP DECK VEHICLE ENTRY/EXIT AREA
- 5 SW-4 FALL PROTECTION GUARDRAIL, REFER TO 3/A-907-0
- 6 OSSE BUILDING BEYOND
- 7 SHEAR WALL, REFER TO STRUCTURAL DRAWINGS.
- 8 PROPERTY FENCE-SW-2. REFER TO 1/A-907-0
- 9 12' DOUBLE T PRECAST CONCRETE DECK, REFER TO STRUCTURAL DRAWINGS
- 10 PROPERTY FENCE BEYOND
- 11 RAMP OUTLINE
- 12 GUARD BOOTH OUTLINE, REFER TO A-901-0
- 13 OUTLINE OF SOUTH EXIT STAIR, REFER TO A-405-0
- 14 TEMPORARY FENCE FOR PHASE ONE CONSTRUCTION
- 15 EXTERIOR LIGHT POLE BOD LITHONIA D SERIES AT 15'-0" HEIGHT, R.E.D
- 16 OSSE NORTH STAIR TOWER BEYOND, REFER TO A-406-0
- 17 COVERED PARKING OUTLINE, REFER TO A-101-R

KEYPLAN



#	Date	Change Description

DGS BUILD
DESIGN • CONSTRUCTION • MAINTENANCE
GENERAL SERVICES

MAINTAIN SUSTAIN

FEMS FLEET MAINTENANCE FACILITY
BLUE PLAINS - D.C. VILLAGE LANE SW.
WASHINGTON D.C. 20032
FOR THE
GOVERNMENT OF THE DISTRICT
OF COLUMBIA

ALPHATEC PC
ENGINEERS ARCHITECTS PLANNERS

1225 9TH STREET NW
WASHINGTON, D.C. 20005
TEL 202/797-5000
FAX 202/797-5003

SUB-CONSULTANT:	SEAL:
Dwg. Coord.:	Tech. Coord.:
Project No.:	SEE PLOT STAMP
OSSE FACILITY AND PARKING STRUCTURE - ELEVATIONS	A-105-0
PERMIT SUBMISSION	10/12/2023