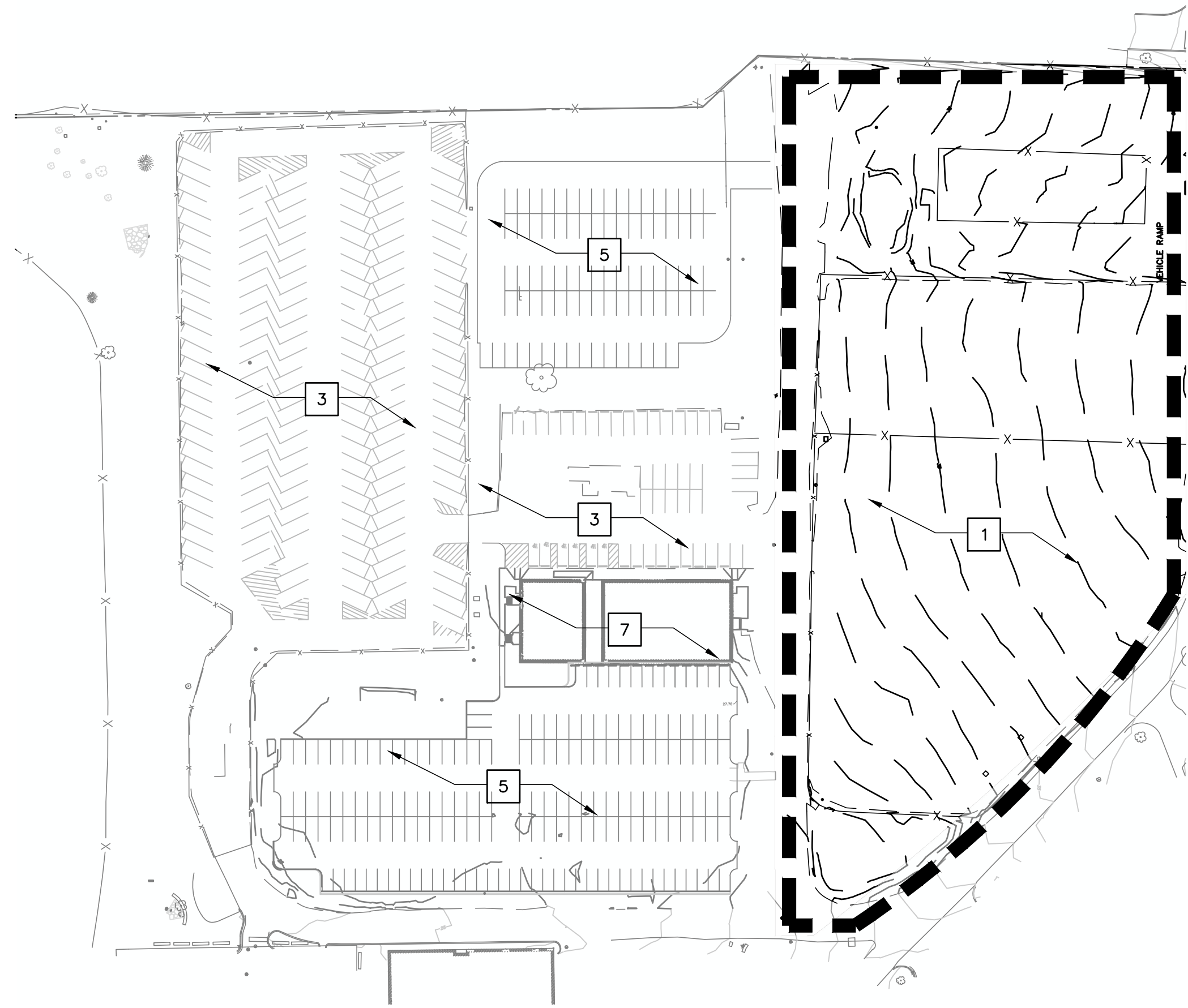


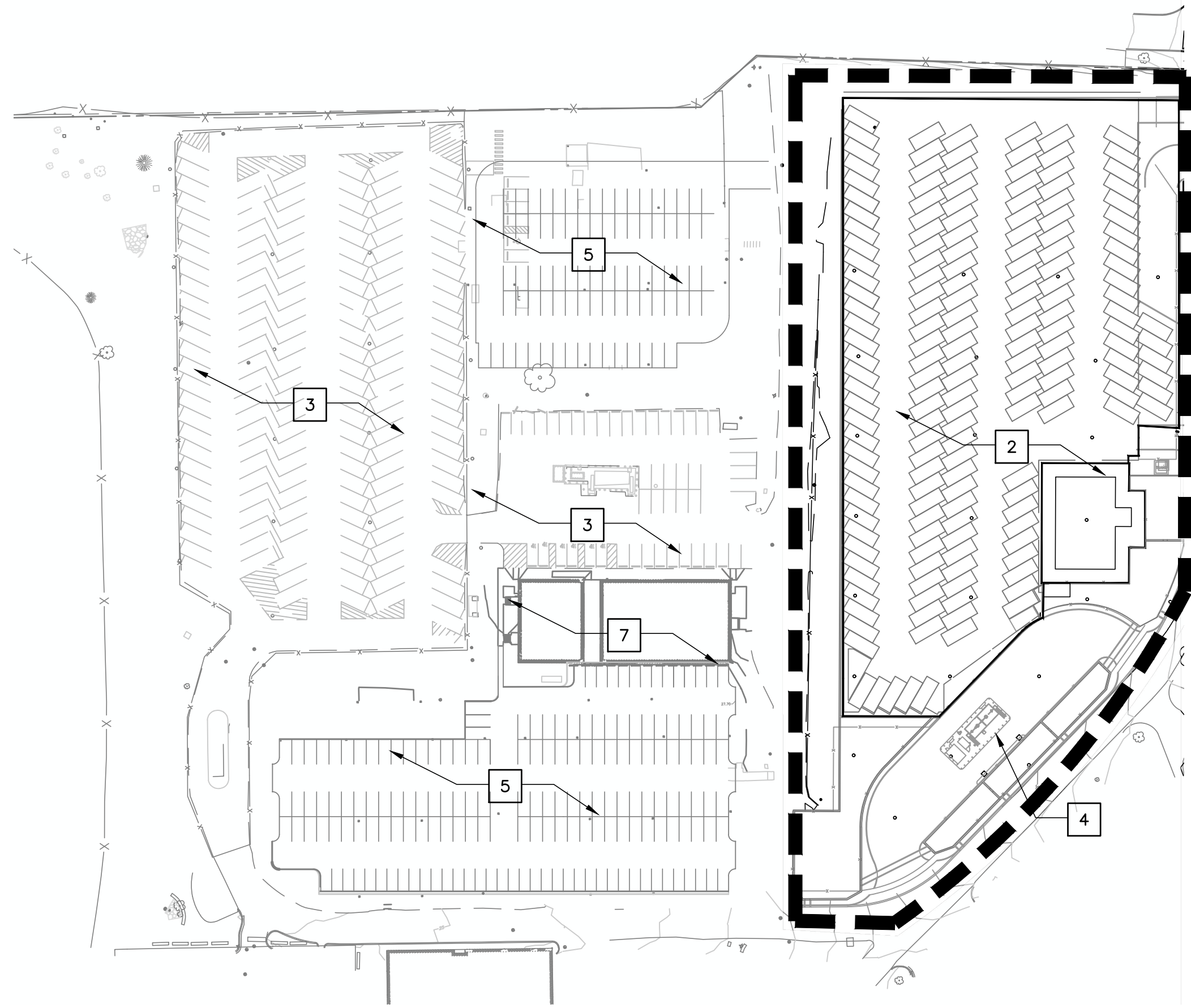
**A1**  
TEMPORARY SITE LIGHTING OF TEMPORARY PARKING TO ACCOMMODATE UNINTERRUPTED OSSE OPERATIONS AND TEMPORARY PARKING USE

1  
G-007 SITE PLAN - PHASE A1



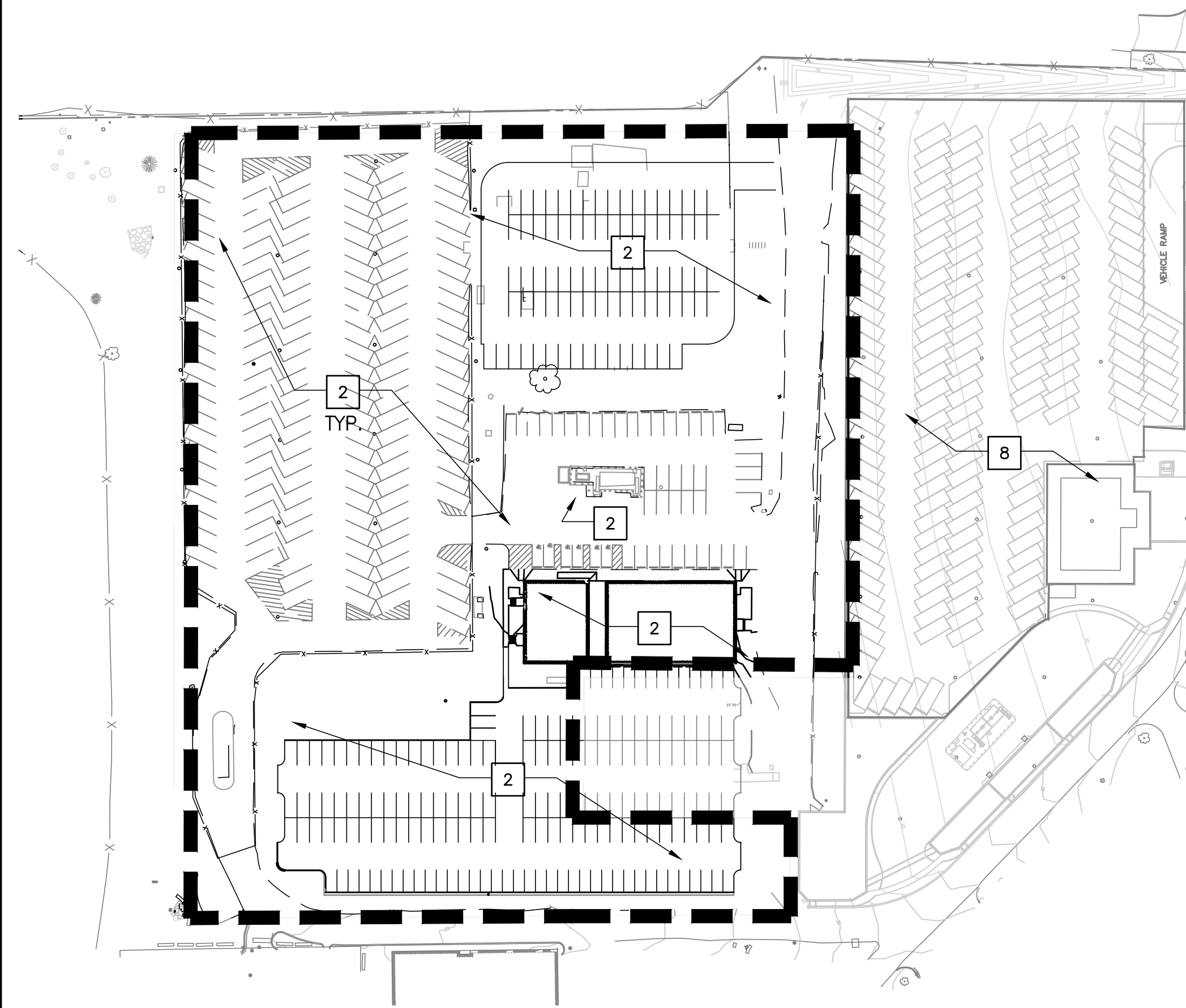
**A2**  
SITE CLEARING TO ACCOMMODATE NEW OSSE OPERATIONS AND UNINTERRUPTED EXISTING OSSE OPERATIONS.

2  
G-007 SITE PLAN - PHASE A2



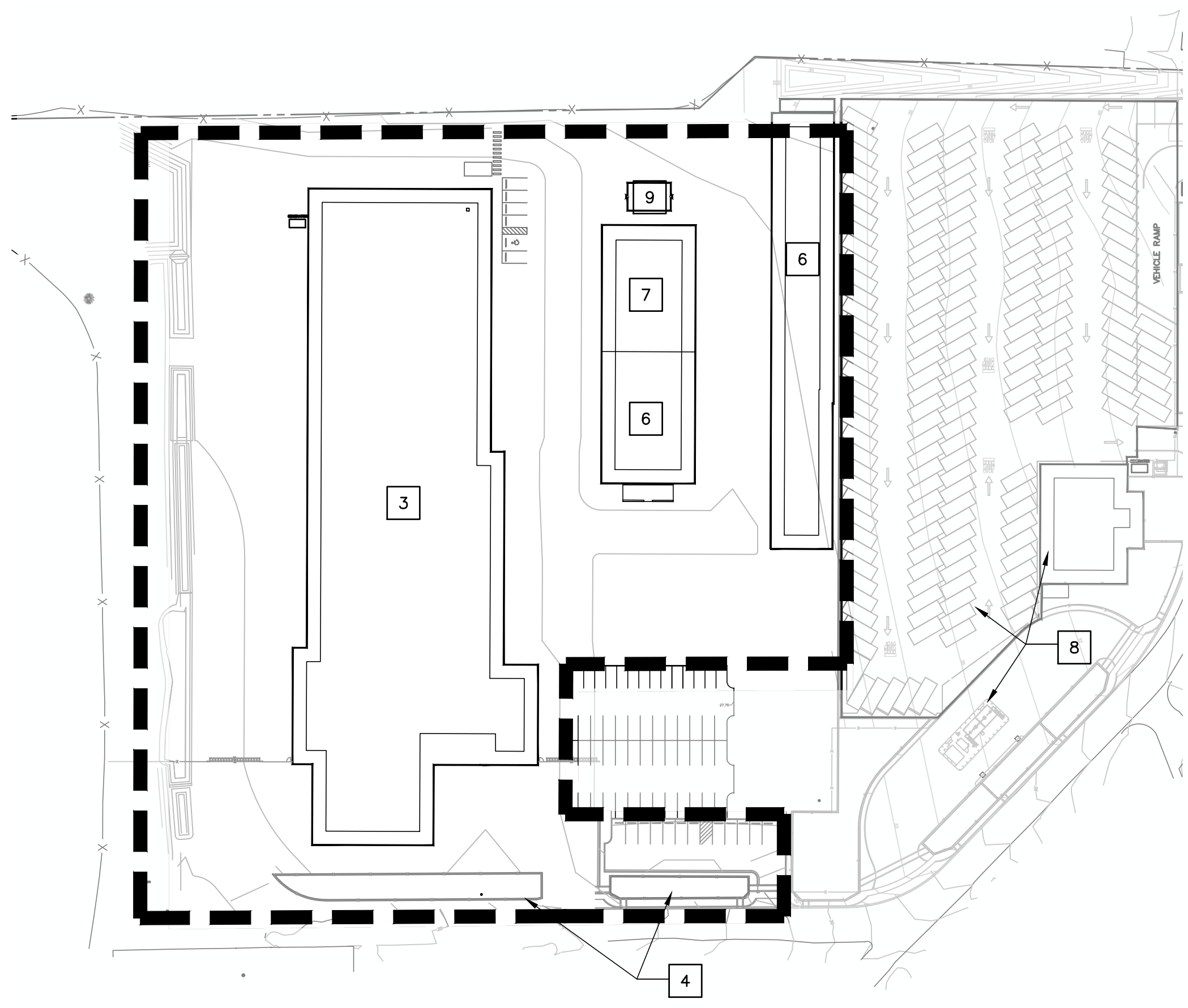
**A3**  
CONSTRUCTION OF NEW OSSE PARKING STRUCTURE, FUELING STATION AND ADMINISTRATION BUILDING. UNINTERRUPTED EXISTING OSSE OPERATIONS.

3  
G-007 SITE PLAN - PHASE A3



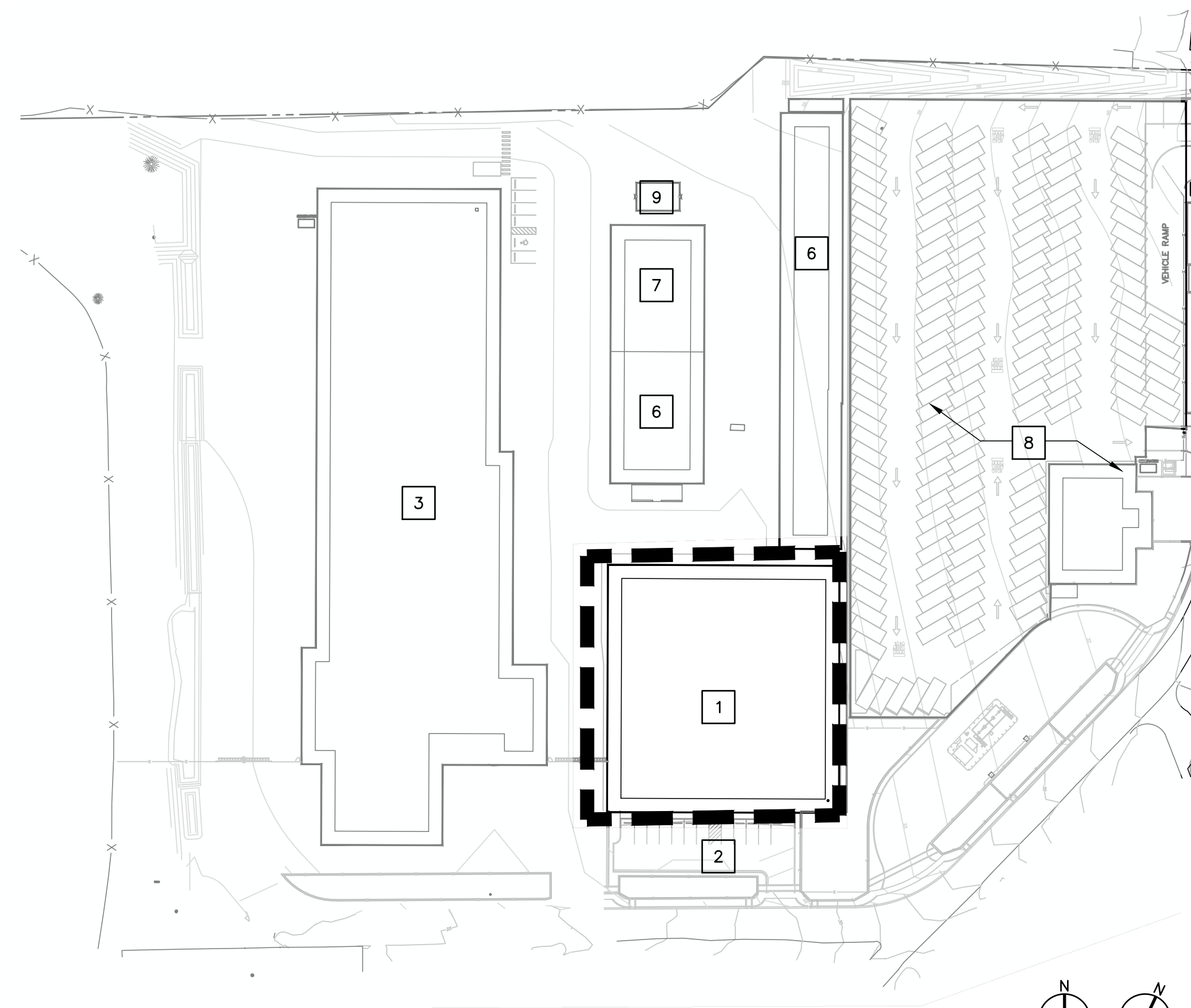
**B1**  
SITE CLEARING AND RAZE OF OSSE AREAS (SITE-WEST) TO ACCOMMODATE NEW FEMS OPERATIONS. COMPLETED OSSE FACILITY OPERATIONAL AND TO REMAIN UNDISTURBED,

4  
G-007 SITE PLAN - PHASE B1



**B2**  
CONSTRUCTION OF NEW FEMS FACILITIES EXCLUDING LOGISTICS BUILDING.

5  
G-007 SITE PLAN - PHASE B2



**C1**  
CONSTRUCTION OF NEW LOGISTICS FACILITY AND PARKING

6  
G-007 SITE PLAN - PHASE C1 SCALE: 1/64" = 1'-0"

## GENERAL NOTES

1. PROVIDE CONSTRUCTION SCREEN AT PERIMETER OF SITE.
2. PROVIDE TEMPORARY CONSTRUCTION FENCING TO SECURE THE PERIMETER OF PHASED WORK.
3. PROVIDE SIGNAGE FOR CLEAR DESIGNATION OF A DEDICATED CONSTRUCTION ENTRANCE AND OSSE ENTRANCE. OSSE SHALL ACCESS THE SITE, PARK BUSES ON THE SITE AND OPERATE IN EXISTING TRAILER OFFICES DURING CONSTRUCTION PHASING.
4. VISIT TO THE SITE: THE CONTRACTOR SHALL VISIT THE SITE AND SHALL OBSERVE ALL EXISTING CONDITIONS, EQUIPMENT, FIXTURES, FINISHES, ETC. PRIOR TO SUBMITTING THEIR BID. AND INCLUDE IN THEIR BID PRICE ALL LABOR AND MATERIAL THAT MAY AFFECT THEIR WORK.
5. CIVIL INFORMATION ON GENERAL, PHASING AND ARCHITECTURAL SHEETS IS FOR INFORMATION AND REFERENCE ONLY. REFER TO CIVIL DRAWINGS FOR SITE WORK
6. RELOCATE AND ABANDON THE SANITARY SEWER CROSSING THE SITE IN EAST-WEST DIRECTION. RELOCATE & THEN ABANDON THE WATER LINE CROSSING THE SITE IN NORTH-SOUTH DIRECTION.

## KEY NOTES - PHASE A

- 1 DEMOLISH ALL EXISTING SITE FEATURES U.O.N. WHICH INCLUDES BUT IS NOT LIMITED TO EXISTING FENCING, PARKING LOT FEATURES, CONCRETE SLABS, BELOW GRADE STRUCTURES, ABOVE GRADE STRUCTURES AND EXISTING VEGETATION TO ACCOMMODATE NEW OSSE PARKING STRUCTURE AND OFFICE SPACE
- 2 NEW OSSE PARKING STRUCTURE AND OFFICE SPACE
- 3 CONTINUOUS OSSE OPERATIONS AND EMPLOYEE PARKING
- 4 NEW FUELING STATION LOCATION
- 5 PROVIDE TEMPORARY PARKING LIGHTING IN THE PARKING LOT AT AN AVERAGE FOOT-CANDLE LEVEL OF 0.5 MINIMUM HORIZONTAL ILLUMINANCE, PRIOR TO SITE CLEARING OF (E) OSSE PARKING LOT.
- 6 EXISTING TEMPORARY PARKING AND MPD BUILDINGS SLAB AND FOUNDATION BEYOND
- 7 EXISTING OSSE TRAILER AND UTILITY SYSTEMS INFRASTRUCTURE TO REMAIN UNDISTURBED

## KEY NOTES - PHASE B

- 1 NOT USED
- 2 DEMOLISH ALL EXISTING SITE FEATURES U.O.N. WHICH INCLUDES BUT IS NOT LIMITED TO EXISTING FENCING, PARKING LOT FEATURES, CONCRETE SLABS, BELOW GRADE STRUCTURES, ABOVE GRADE STRUCTURES AND SITE STRUCTURES TO ACCOMMODATE NEW FEMS FACILITY
- 3 NEW FEMS MAINTENANCE BUILDING
- 4 NEW VISITOR PARKING AND BIORETENTION AREAS. SEE CIVIL DRAWINGS.
- 5 NOT USED
- 6 COVERED VEHICLE PARKING
- 7 HEATED VEHICLE STORAGE
- 8 COMPLETED OSSE FACILITY AND FUEL STATION
- 9 FEMS PUMP TEST

## KEY NOTES - PHASE C

- 1 NEW FEMS LOGISTICS WAREHOUSE
- 2 COMPLETED VISITOR PARKING
- 3 COMPLETED NEW FEMS MAINTENANCE BUILDING
- 6 COMPLETED COVERED VEHICLE PARKING
- 7 COMPLETED HEATED VEHICLE STORAGE
- 8 COMPLETED OSSE FACILITY
- 9 COMPLETED FEMS PUMP TEST

#	Date	Change Description

**DGS BUILD MAINTAIN SUSTAIN**  
FEMS FLEET MAINTENANCE FACILITY  
BLUE PLAINS - D.C. VILLAGE LANE SW.,  
WASHINGTON D.C. 20032  
FOR THE  
GOVERNMENT OF THE DISTRICT  
OF COLUMBIA

**ALPHATEC PC**  
ENGINEERS  
ARCHITECTS  
PLANNERS  
1025 18TH STREET N.W.  
WASHINGTON, D.C. 20036  
TEL. 202/797-5000  
FAX 202/797-5003

SUB-CONSULTANT	SEAL
Dwg. Coord.:	Tech. Coord.:
Project NO.:	SEE PLOT STAMP
SITE PHASING KEY PLAN	G-007
PERMIT SUBMISSION	10/12/2023