

OFFICE OF TAX AND REVENUE
ASSESSMENT DIVISION



ASSESSMENT AND TAXATION PLAT

Square 1042

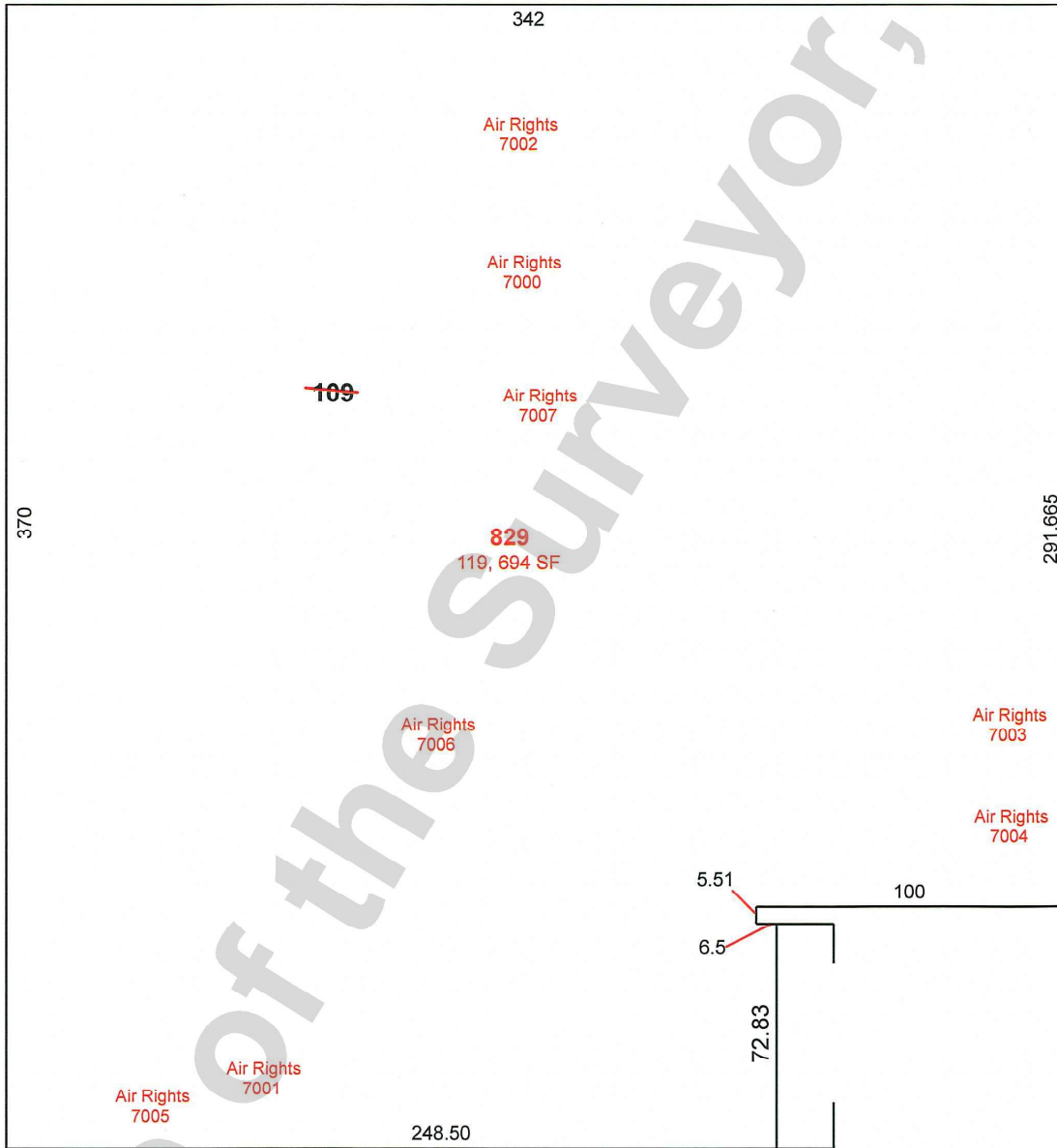
D STREET, S.E.

3871-P



16' PUBLIC ALLEY

14TH STREET, S.E.



E STREET, S.E.

Dana Smith A073381 4/12/2017 Scale, 1 inch 50 ft.
 Draftsman Reference Date

The Office of Surveyor of the District of Columbia shall admit this plat to record under the provisions of Chapter 7 of Title 47, District of Columbia Code, Designation of Real Property for Assessment and Taxation, and for other purposes.

[Signature]
 Chief Assessor, Office of Tax and Revenue

Board of Zoning Adjustment
 District of Columbia
 CASE NO.20705
 EXHIBIT NO.16