

Sq. 5240


Sq. 5248

Sq. 5247

R-2

Subj. Property
Square 5248, Lot 23

Board of Zoning Adjustment
District of Columbia
CASE NO.20645
EXHIBIT NO.5

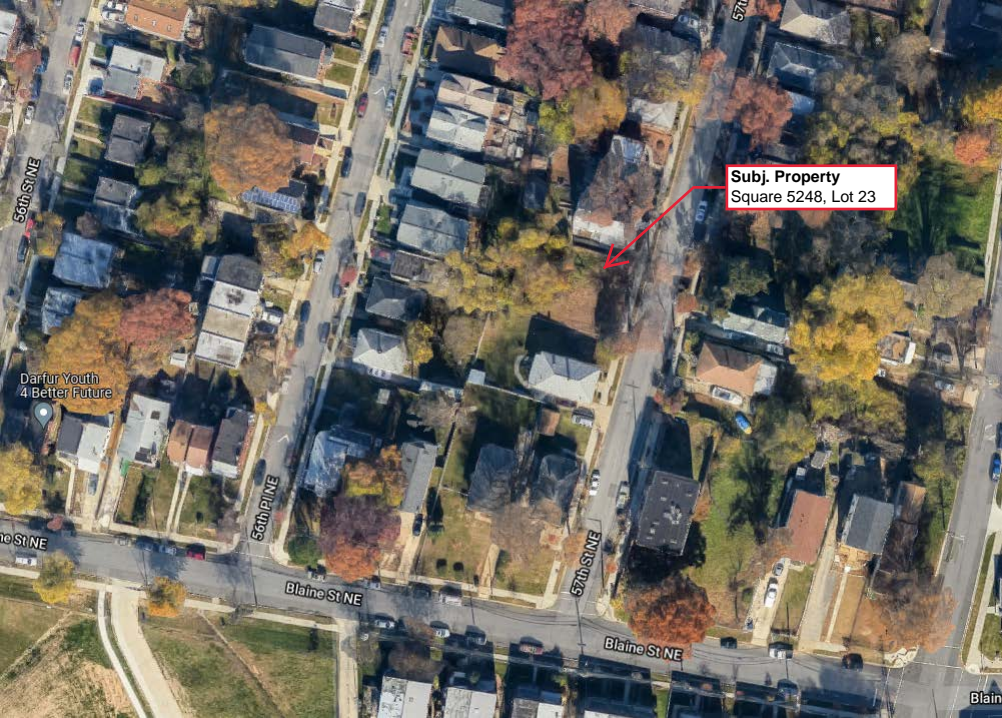


The image shows a street map with a grid of lots. A central lot is highlighted in yellow and contains a red circle. A red arrow points from a text box to this circle. The text box contains the text 'Subj. Property Square 5248, Lot 23'. The street names '56', '57th St NE', and '57th Pl NE' are visible. A red hatched area is shown in the bottom right corner.

Subj. Property
Square 5248, Lot 23

R-2

57th Pl NE



Subj. Property
Square 5248, Lot 23

Darfur Youth
4 Better Future

56th St NE

56th PINE

Blaine St NE

57th St NE

Blaine St NE

Blaine St NE

210 1/2 57th St., NE

Subj. Property
Square 5248, Lot 23

214 57th St., NE



210 57th St., NE

210 1/2 57th St., NE

Across 57th St., NE

211 57th St., NE

209 57th St., NE

