

Harrison Family Forest Hills Project

3007 Albemarle Street NW and Appleton Street frontage
Square 2041, Lot 0818 (underlying Lot 12)



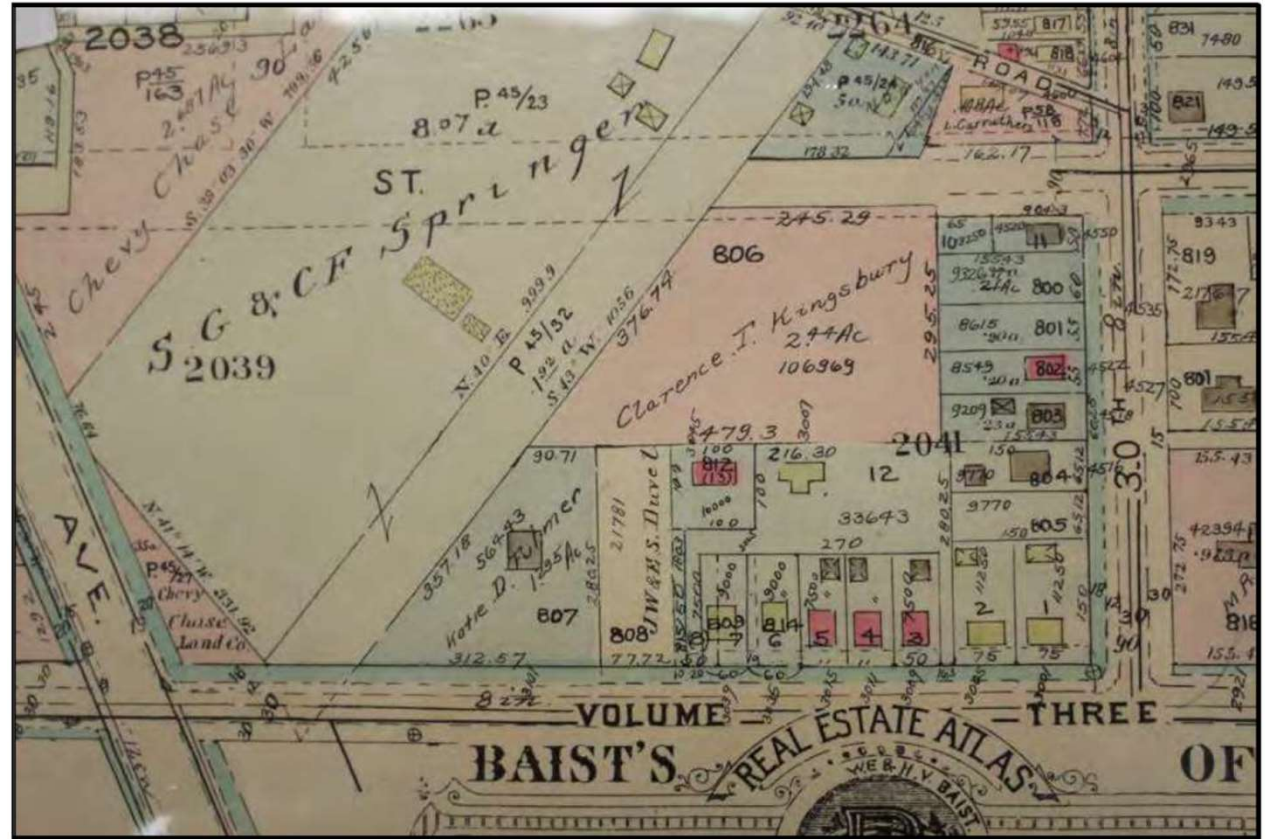
Context

- Official address: 3007 Albemarle Street NW – sq 2041, lot 818 (majority of underlying lot 12)
- 30,618 square foot lot (4x 7,500 sq ft minimum)



Context

- Current house site (lot 12) was occupied when 3100 block of Appleton/4500 block of 31st did not exist, streets were built in the early 1950s.
- Lot 12's western pipestem was divided off in 1951, added to neighbors.



Baist's Survey of the District of Columbia, 1931, Volume 3, Pt. 2, Plate 32

Entry

- Current vehicular access is 16.3 foot-wide pipestem driveway from Albemarle St.
- Appleton frontage is inactive, needs public space permit for driveway (under submission, no objection from DDOT, no heritage trees).



Top of pipestem

- The site opens up as the driveway enters it from the southeast.
- This is the entrance House Two will experience

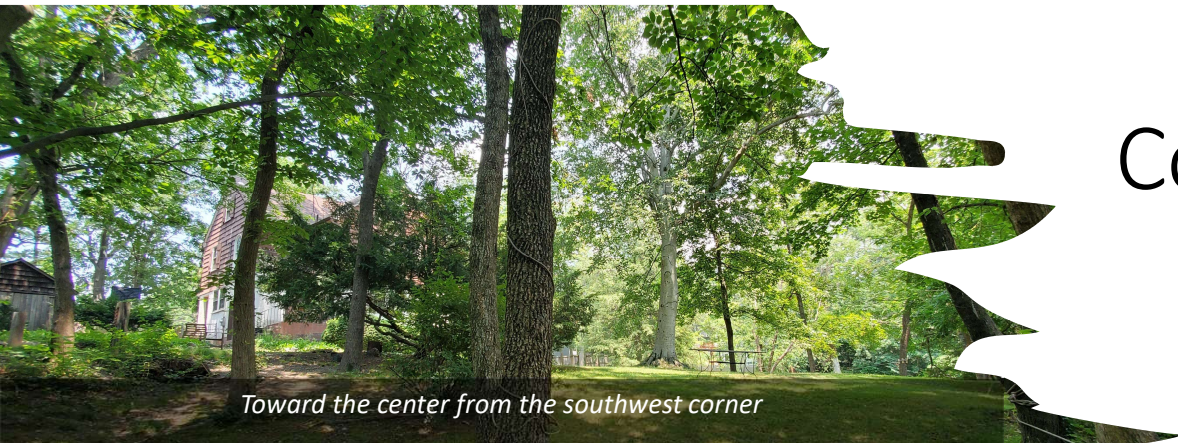




West from the northeast corner



East from the northeast corner, along the Appleton street lot line to the left.



Toward the center from the southwest corner

Corners



Further context

