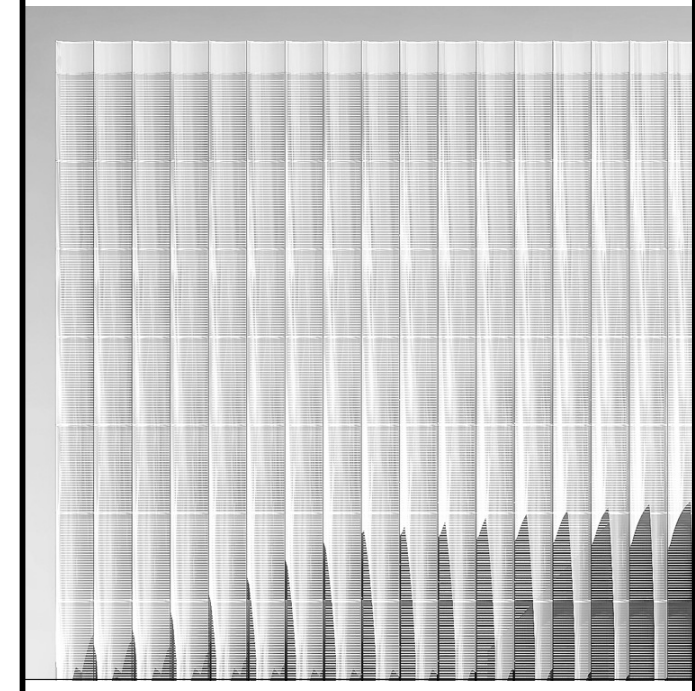
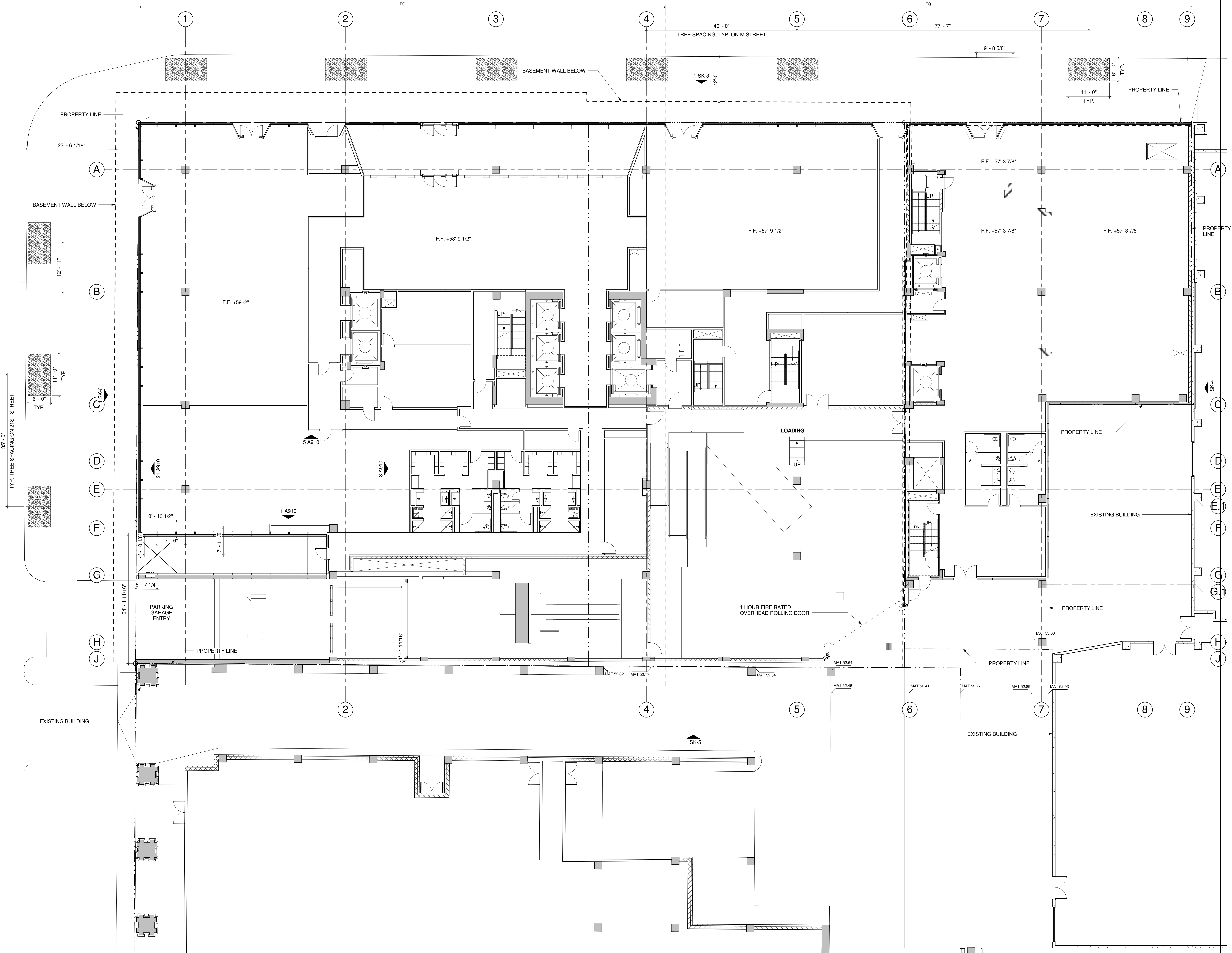


M STREET N.W.

21st STREET N.W.

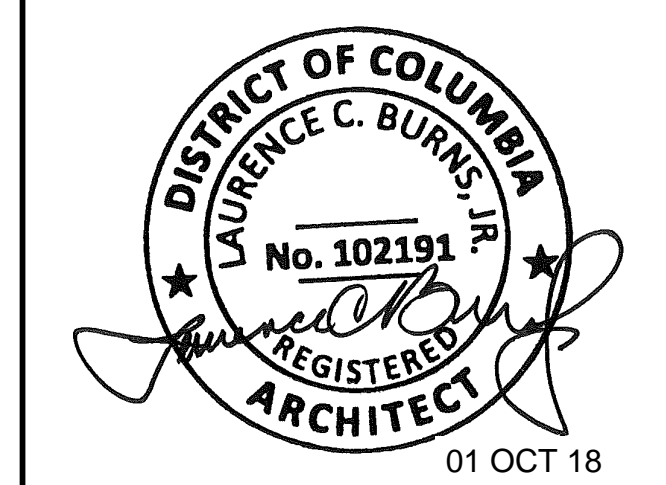
21ST STREET N.W.



2050 M STREET

TISHMAN SPEYER

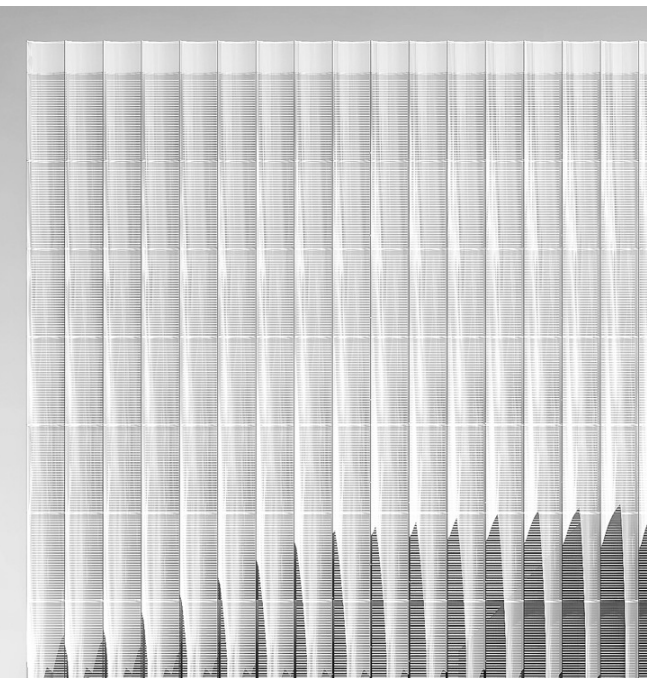
- REX ARCHITECTURE P.C.  
DESIGN ARCHITECT
- KENDALL HEATON ASSOCIATES, INC.  
ARCHITECT OF RECORD
- FRONT INC.  
FACADE CONSULTANT
- LELA - LESLIE E. ROBERTSON ASSOC.  
STRUCTURAL ENGINEER
- WSP PARSONS BRINCKERHOFF  
MEP ENGINEER
- WILES MENSCH  
CIVIL ENGINEER
- MICHAEL BLADES  
ELEVATOR CONSULTANT
- GEORGE SEXTON  
LIGHTING CONSULTANT
- BAUMANN CONSULTING  
LEED CONSULTANT
- CERAMI & ASSOCIATES  
ACOUSTIC CONSULTANT
- ARUP  
LIFE SAFETY CONSULTANT
- RICHTER & ASSOCIATES  
DRY UTILITIES CONSULTANT



NO.	DATE	ISSUE
1	01 OCT 18	ANTENNAE EXHIBIT

DRAWING TYPE  
**ARCHITECTURE**

DRAWING TITLE  
**SITE PLAN**



# 2050 M STREET

TISHMAN SPEYER

REX ARCHITECTURE P.C.  
DESIGN ARCHITECT

KENDALL HEATON ASSOCIATES, INC.  
ARCHITECT OF RECORD

FRONT INC.  
FACADE CONSULTANT

LERA - LESLIE E. ROBERTSON ASSOC.  
STRUCTURAL ENGINEER

WSP PARSONS BRINCKERHOFF  
MEP ENGINEER

WILES MENSCH  
CIVIL ENGINEER

MICHAEL BLADES  
ELEVATOR CONSULTANT

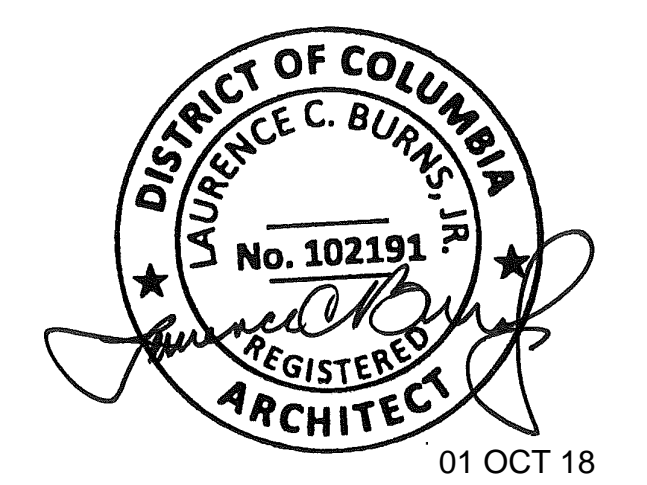
GEORGE SEXTON  
LIGHTING CONSULTANT

BAUMANN CONSULTING  
LEED CONSULTANT

CERAMI & ASSOCIATES  
ACOUSTIC CONSULTANT

ARUP  
LIFE SAFETY CONSULTANT

RICHTER & ASSOCIATES  
DRY UTILITIES CONSULTANT



1 01 OCT 18 ANTENNAE EXHIBIT  
NO. DATE ISSUE

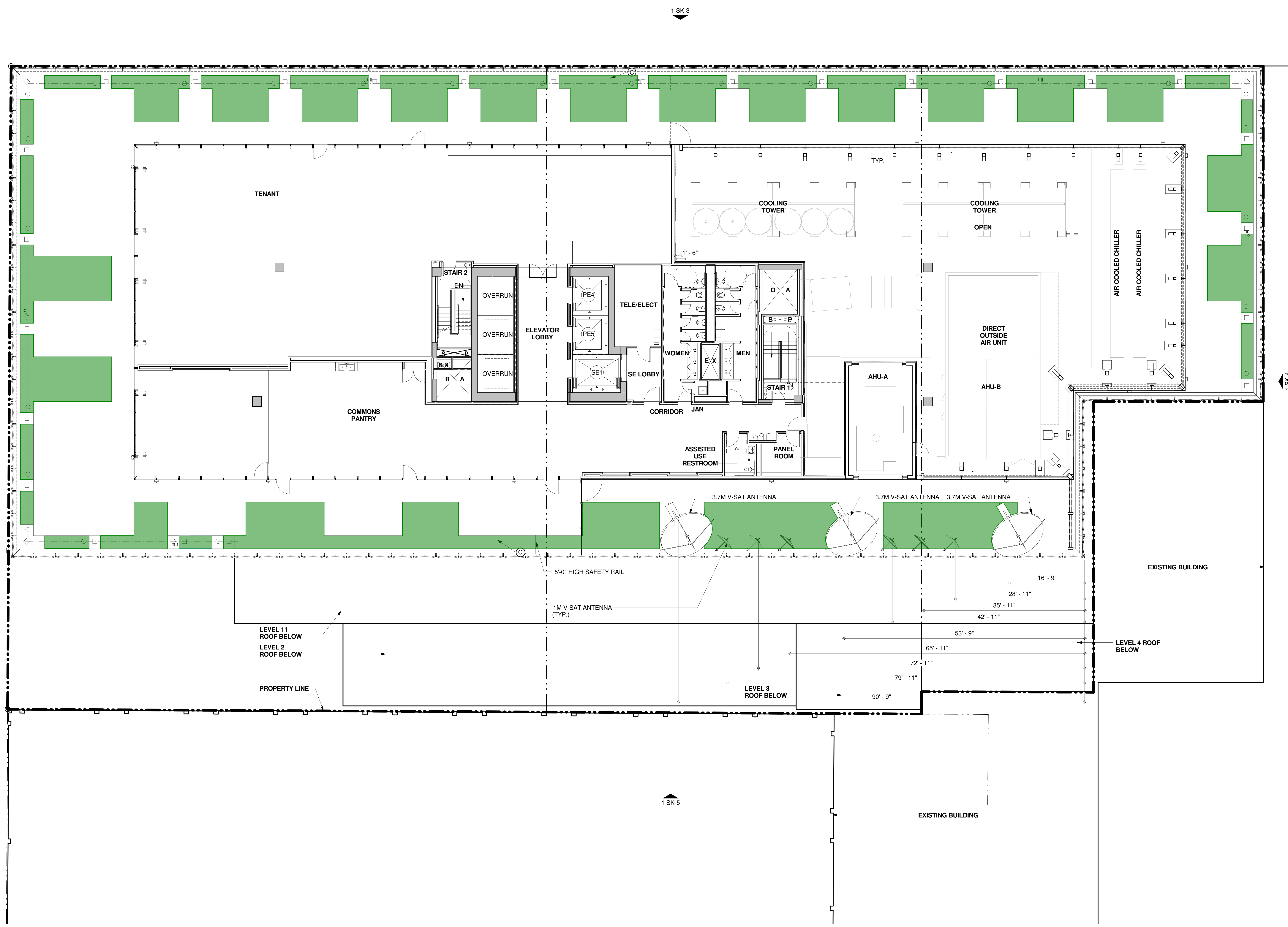
DRAWING TYPE  
**ARCHITECTURE**

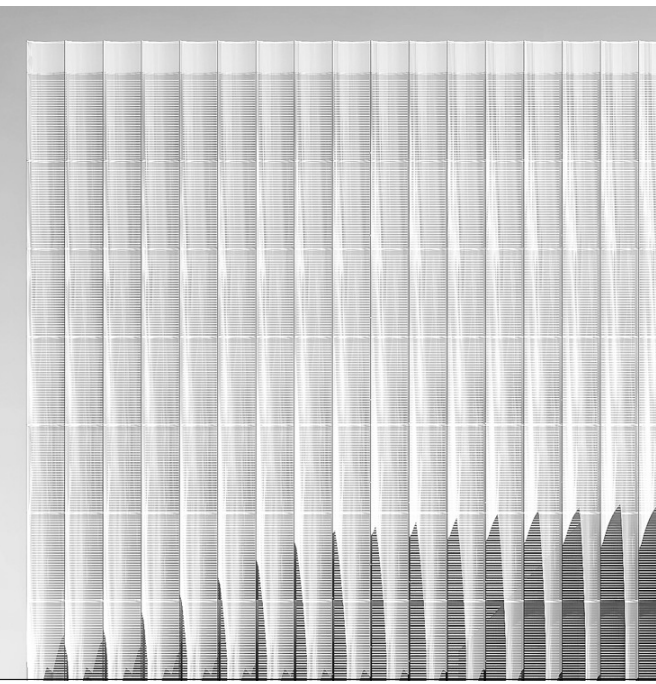
CAD FILENAME

DRAWING TITLE  
**LEVEL 12  
TERRACE PLAN**

PROJECT NO.  
15016

DRAWING NUMBER  
**SK-2**





# 2050 M STREET



REX ARCHITECTURE P.C.  
DESIGN ARCHITECT

KENDALL HEATON ASSOCIATES, INC.  
ARCHITECT OF RECORD

FRONT INC.  
FACADE CONSULTANT

LERA - LESLIE E. ROBERTSON ASSOC.  
STRUCTURAL ENGINEER

WSP PARSONS BRINCKERHOFF  
MEP ENGINEER

WILES MENSCH  
CIVIL ENGINEER

MICHAEL BLADES  
ELEVATOR CONSULTANT

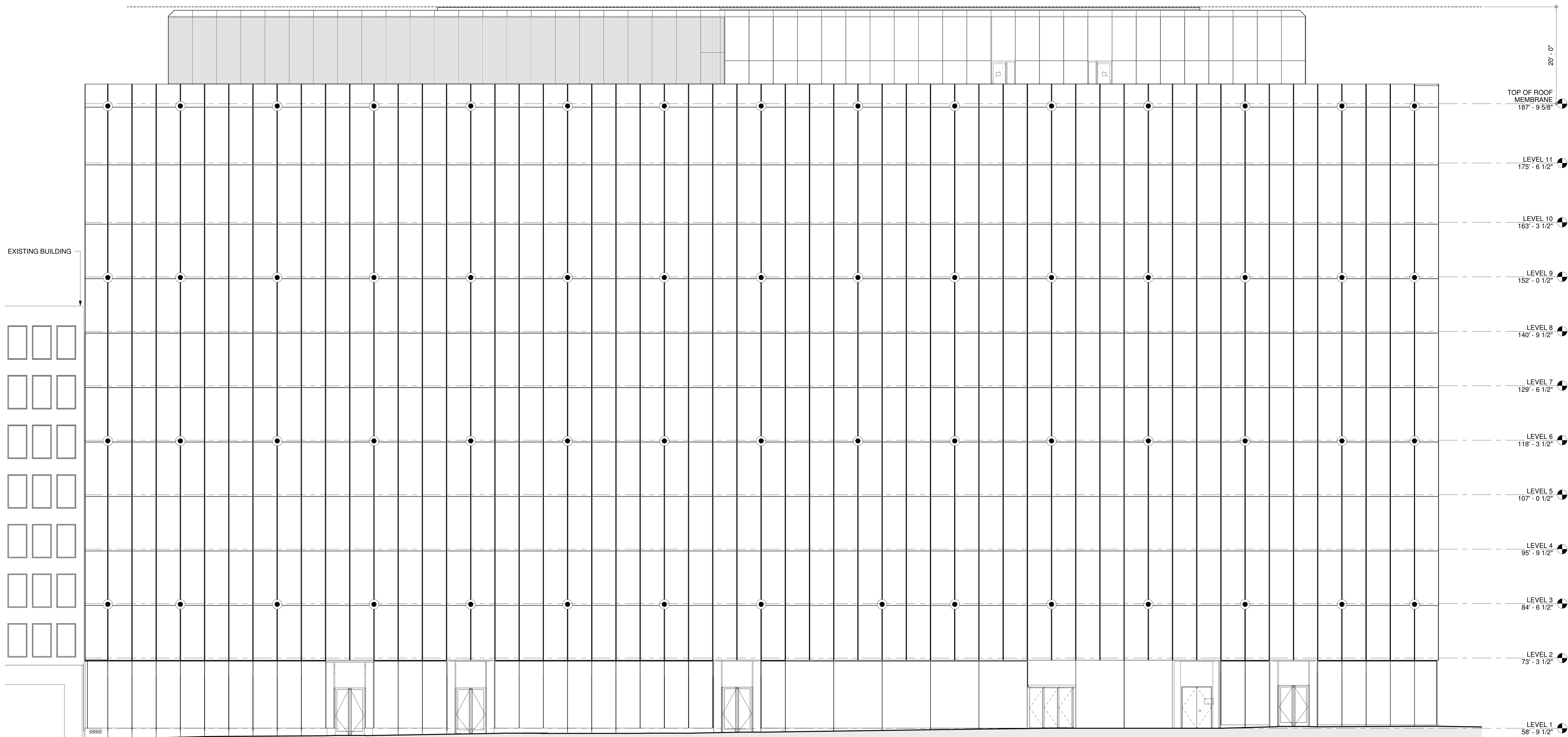
GEORGE SEXTON  
LIGHTING CONSULTANT

BAUMANN CONSULTING  
LEED CONSULTANT

CERAMI & ASSOCIATES  
ACOUSTIC CONSULTANT

ARUP  
LIFE SAFETY CONSULTANT

RICHTER & ASSOCIATES  
DRY UTILITIES CONSULTANT



EXISTING BUILDING

20' - 0"

TOP OF ROOF MEMBRANE 187' - 9 5/8"

LEVEL 11 175' - 6 1/2"

LEVEL 10 163' - 3 1/2"

LEVEL 9 152' - 0 1/2"

LEVEL 8 140' - 9 1/2"

LEVEL 7 129' - 6 1/2"

LEVEL 6 118' - 3 1/2"

LEVEL 5 107' - 0 1/2"

LEVEL 4 95' - 9 1/2"

LEVEL 3 84' - 6 1/2"

LEVEL 2 73' - 3 1/2"

LEVEL 1 58' - 9 1/2"



1 01 OCT 18 ANTENNAE EXHIBIT

NO. DATE ISSUE

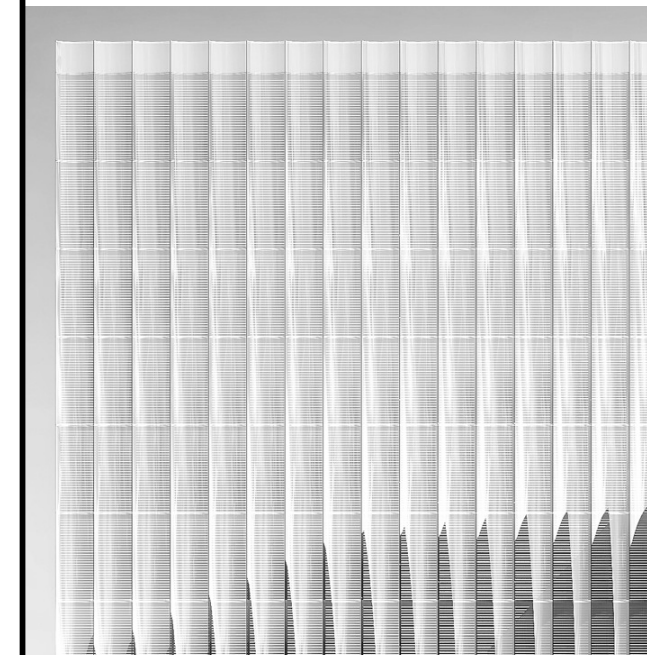
ARCHITECTURE

CAD FILENAME

DRAWING TITLE

**BUILDING ELEVATION NORTH**

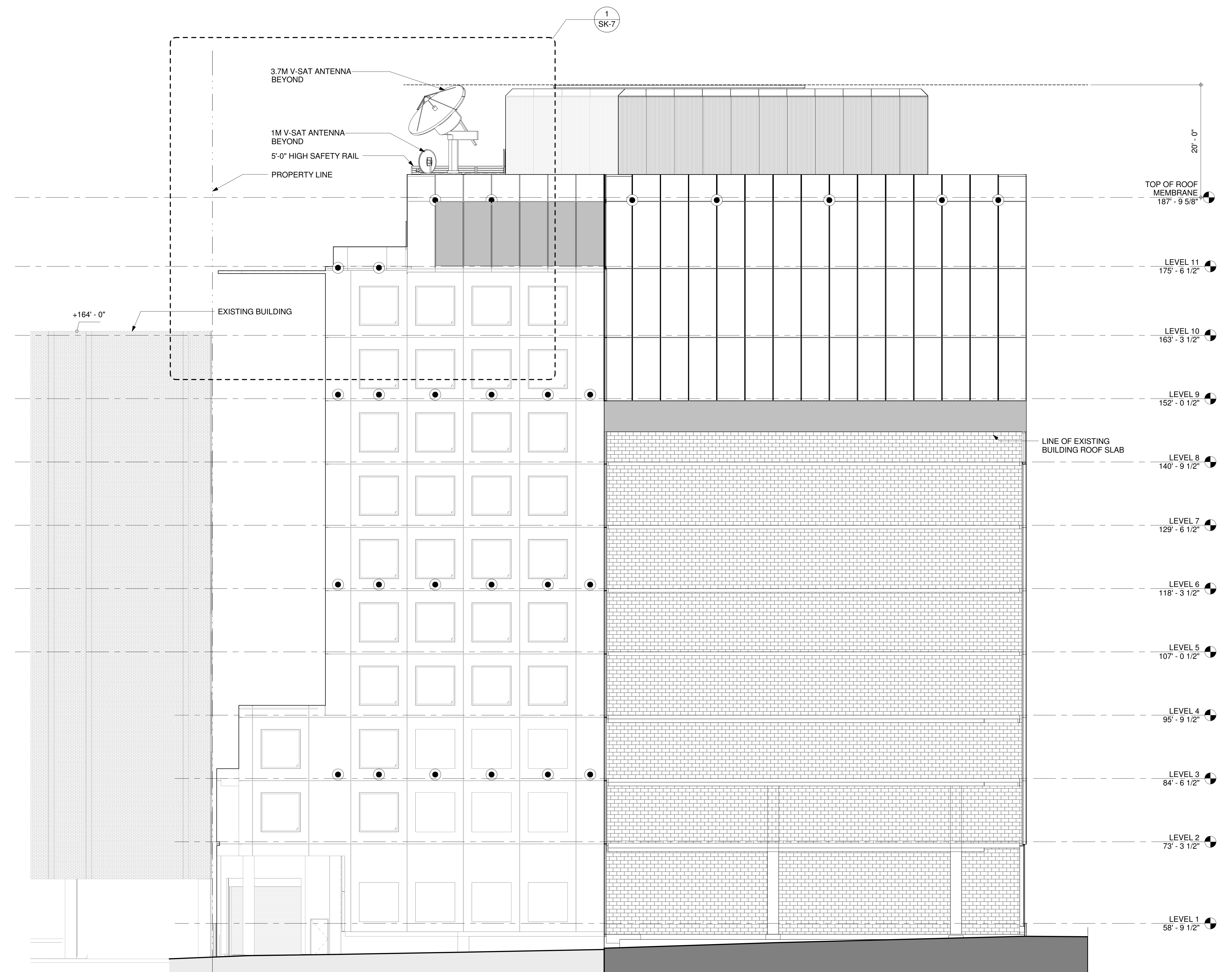
PROJECT NO. 15016 DRAWING NUMBER SK-3



# 2050 M STREET

TISHMAN SPEYER

- REX ARCHITECTURE P.C.  
DESIGN ARCHITECT
- KENDALL HEATON ASSOCIATES, INC.  
ARCHITECT OF RECORD
- FRONT INC.  
FACADE CONSULTANT
- LERA - LESLIE E. ROBERTSON ASSOC.  
STRUCTURAL ENGINEER
- WSP PARSONS BRINCKERHOFF  
MEP ENGINEER
- WILES MENSCH  
CIVIL ENGINEER
- MICHAEL BLADES  
ELEVATOR CONSULTANT
- GEORGE SEXTON  
LIGHTING CONSULTANT
- BAUMANN CONSULTING  
LEED CONSULTANT
- CERAMI & ASSOCIATES  
ACOUSTIC CONSULTANT
- ARUP  
LIFE SAFETY CONSULTANT
- RICHTER & ASSOCIATES  
DRY UTILITIES CONSULTANT



NO.	DATE	ISSUE
1	01 OCT 18	ANTENNAE EXHIBIT

ARCHITECTURE

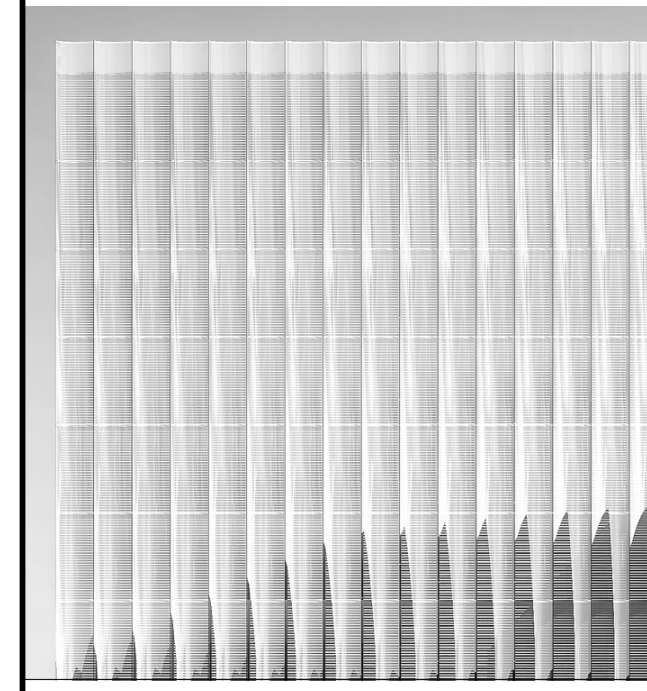
**BUILDING ELEVATION EAST**

PROJECT NO: 15016 DRAWING NUMBER: SK-4

EAST ELEVATION

1/8" = 1'-0"

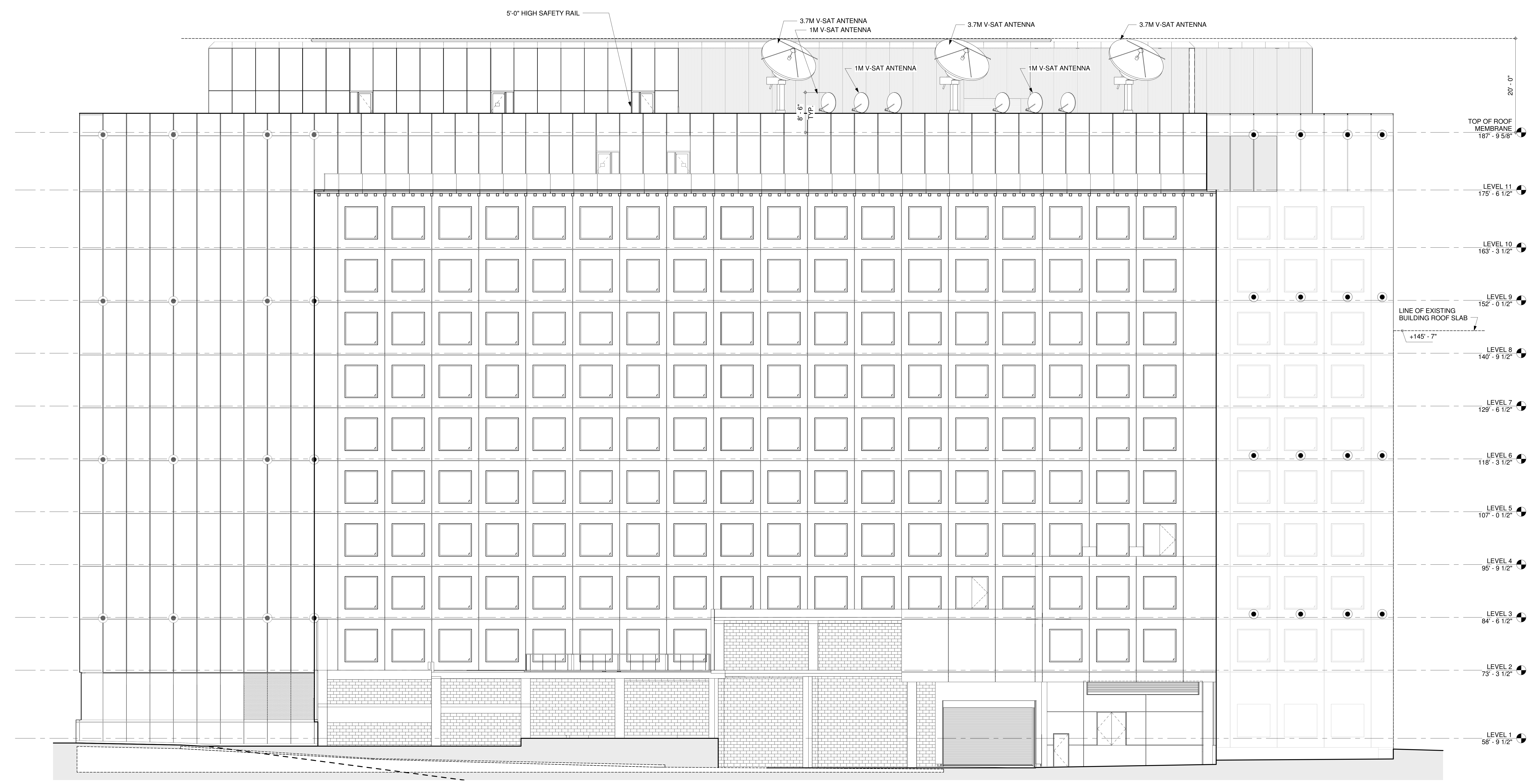
10/1/2018 4:15:36 PM



# 2050 M STREET



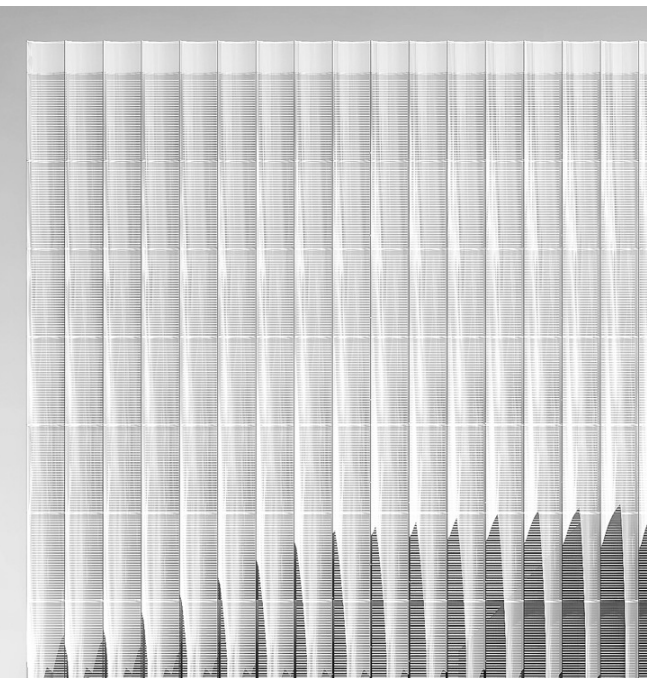
- REX ARCHITECTURE P.C.  
DESIGN ARCHITECT
- KENDALL HEATON ASSOCIATES, INC.  
ARCHITECT OF RECORD
- FRONT INC.  
FACADE CONSULTANT
- LERA - LESLIE E. ROBERTSON ASSOC.  
STRUCTURAL ENGINEER
- WSP PARSONS BRINCKERHOFF  
MEP ENGINEER
- WILES MENSCH  
CIVIL ENGINEER
- MICHAEL BLADES  
ELEVATOR CONSULTANT
- GEORGE SEXTON  
LIGHTING CONSULTANT
- BAUMANN CONSULTING  
LEED CONSULTANT
- CERAMI & ASSOCIATES  
ACOUSTIC CONSULTANT
- ARUP  
LIFE SAFETY CONSULTANT
- RICHTER & ASSOCIATES  
DRY UTILITIES CONSULTANT



1 01 OCT 18 ANTENNAE EXHIBIT  
NO. DATE ISSUE  
DRAWING TYPE  
**ARCHITECTURE**

DRAWING TITLE  
**BUILDING ELEVATION SOUTH**

PROJECT NO. 15016 DRAWING NUMBER SK-5



# 2050 M STREET

TISHMAN SPEYER

REX ARCHITECTURE P.C.  
DESIGN ARCHITECT

KENDALL HEATON ASSOCIATES, INC.  
ARCHITECT OF RECORD

FRONT INC.  
FACADE CONSULTANT

LERA - LESLIE E. ROBERTSON ASSOC.  
STRUCTURAL ENGINEER

WSP PARSONS BRINCKERHOFF  
MEP ENGINEER

WILES MENSCH  
CIVIL ENGINEER

MICHAEL BLADES  
ELEVATOR CONSULTANT

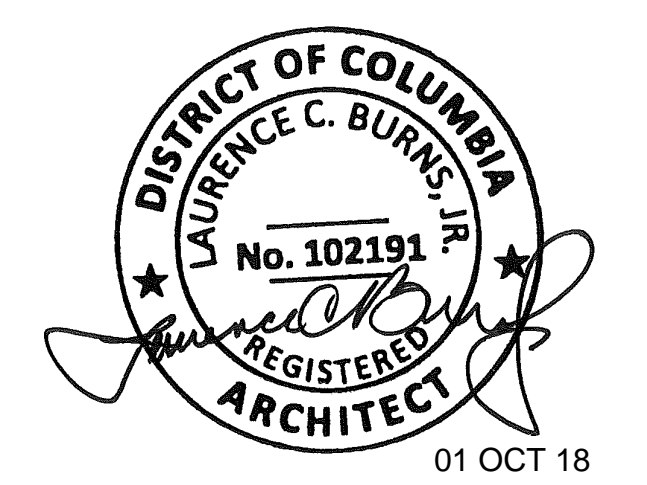
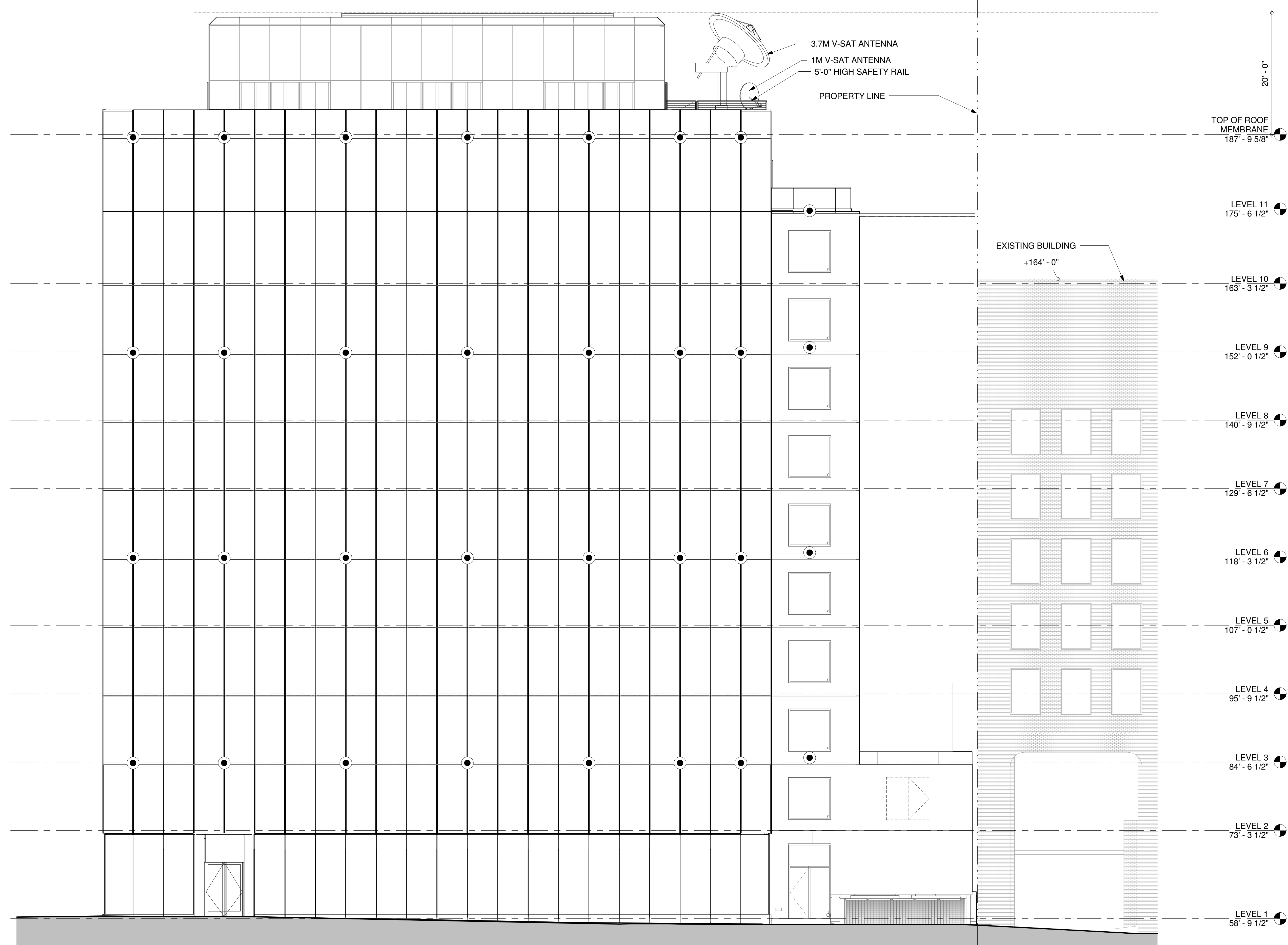
GEORGE SEXTON  
LIGHTING CONSULTANT

BAUMANN CONSULTING  
LEED CONSULTANT

CERAMI & ASSOCIATES  
ACOUSTIC CONSULTANT

ARUP  
LIFE SAFETY CONSULTANT

RICHTER & ASSOCIATES  
DRY UTILITIES CONSULTANT

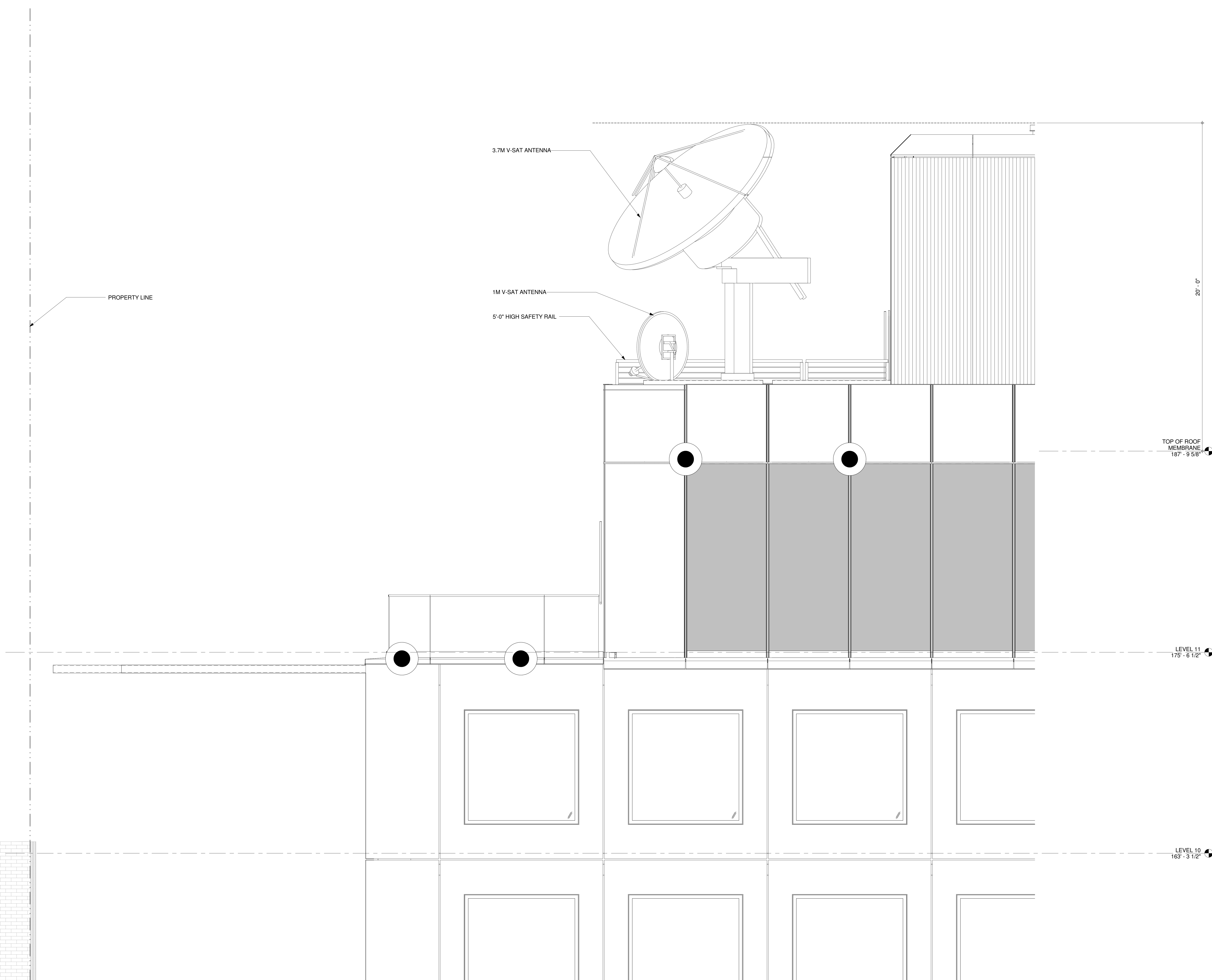


NO.	DATE	ISSUE
1	01 OCT 18	ANTENNAE EXHIBIT

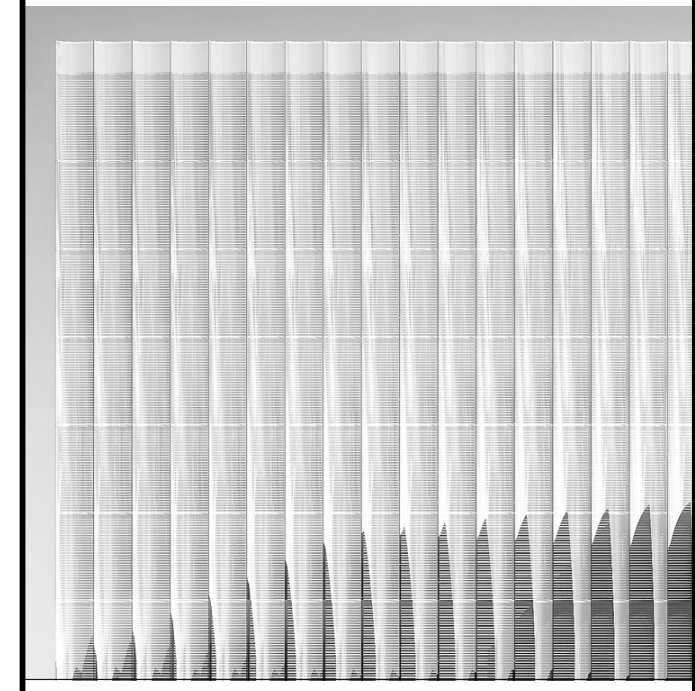
ARCHITECTURE

**BUILDING  
ELEVATION  
WEST**

PROJECT NO: 15016 DRAWING NUMBER: SK-6



10/1/2018 4:21:58 PM



**2050 M STREET**  
TISHMAN SPEYER

- REX ARCHITECTURE P.C.  
DESIGN ARCHITECT
- KENDALL HEATON ASSOCIATES, INC.  
ARCHITECT OF RECORD
- FRONT INC.  
FACADE CONSULTANT
- LERA - LESLIE E. ROBERTSON ASSOC.  
STRUCTURAL ENGINEER
- WSP PARSONS BRINCKERHOFF  
MEP ENGINEER
- WILES MENSCH  
CIVIL ENGINEER
- MICHAEL BLADES  
ELEVATOR CONSULTANT
- GEORGE SEXTON  
LIGHTING CONSULTANT
- BAUMANN CONSULTING  
LEED CONSULTANT
- CERAMI & ASSOCIATES  
ACOUSTIC CONSULTANT
- ARUP  
LIFE SAFETY CONSULTANT
- RICHTER & ASSOCIATES  
DRY UTILITIES CONSULTANT



NO.	DATE	ISSUE
1	01 OCT 18	ANTENNAE EXHIBIT

DRAWING TYPE  
**ARCHITECTURE**

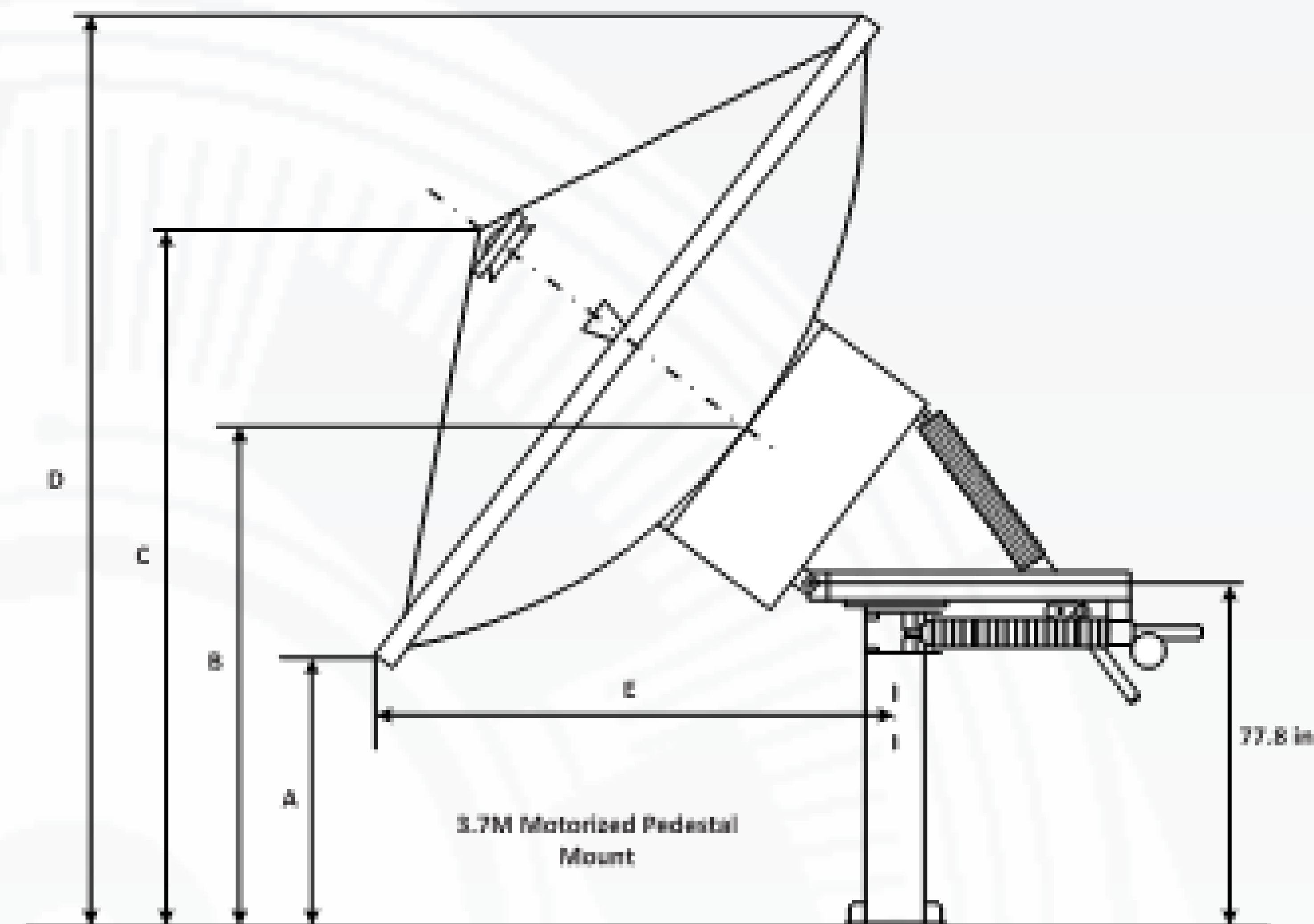
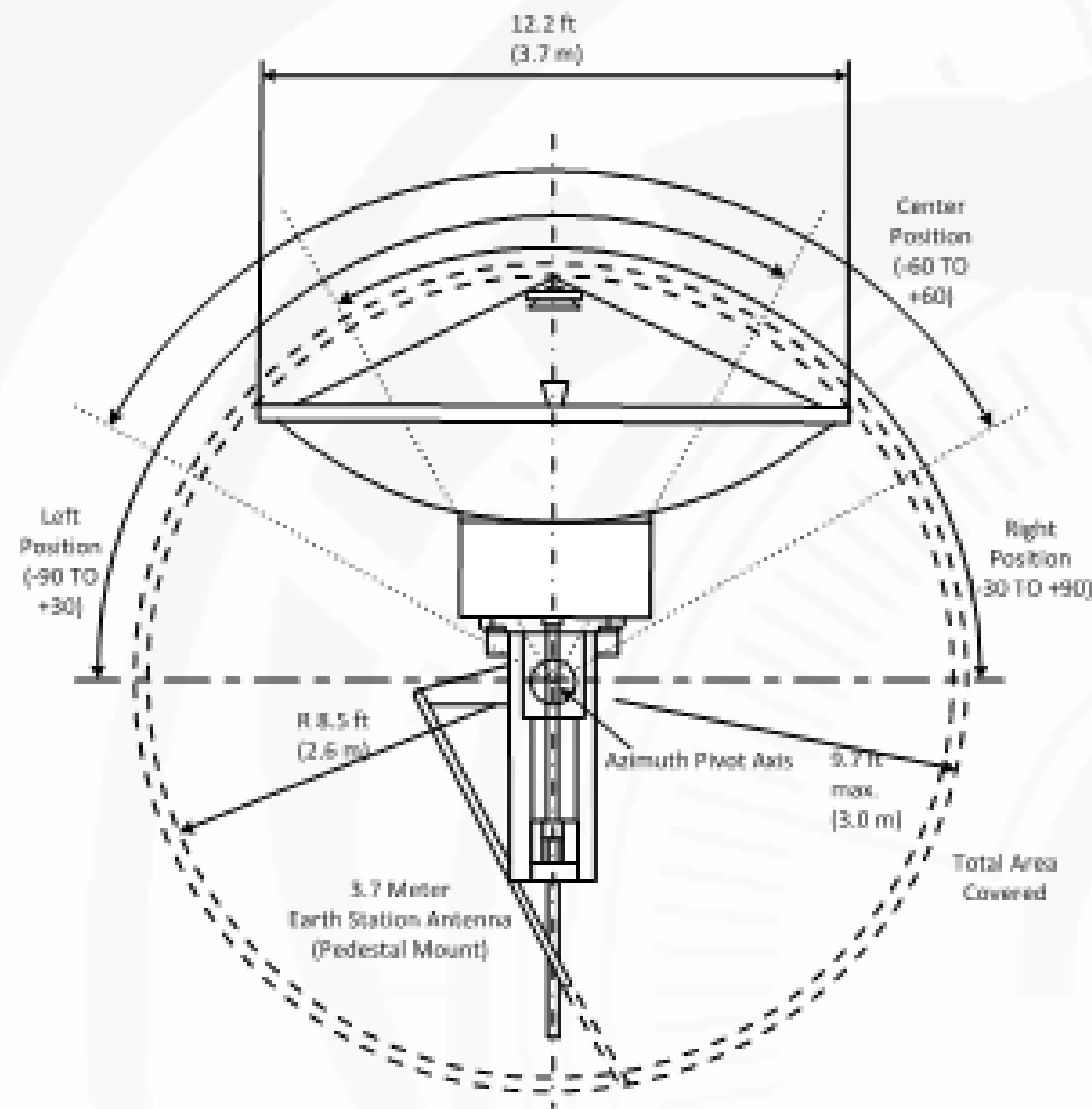
DRAWING TITLE  
**ENLARGED BUILDING ELEVATION EAST**

PROJECT NO.  
15016

DRAWING NUMBER  
**SK-7**

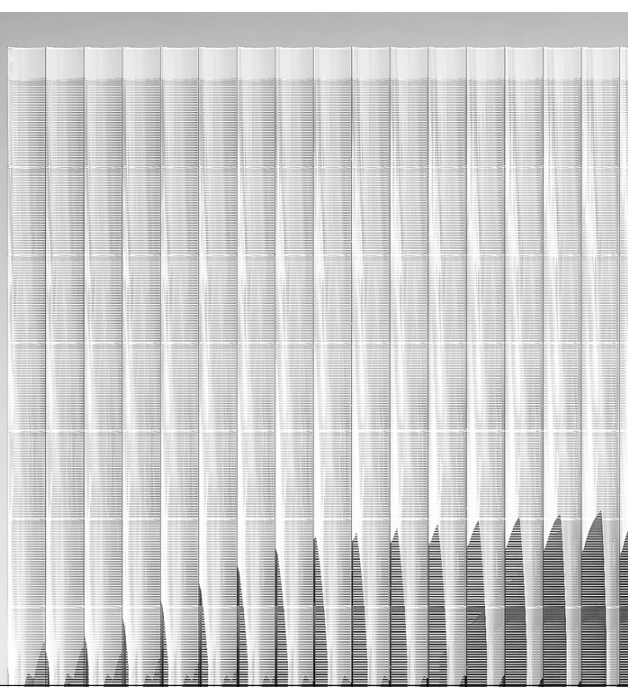
# 3.7 Meter ESA

## Dimensional Drawings Motorizable Mount



## Features

- Self-aligning main reflector
- 3 year warranty on all structural components
- Eutelsat Type Approval, 2-Port Ku-band EA-A002
- Asiasat Approval, Type 2
- Apstar Approval
- INTELSAT® Approval, E-2 at Ku-band: A12A00, 2-Port; IA12B00, 4-Port
- U.S. FCC Regulation 25.209 at Ku-band



2050 M STREET

TISHMAN SPEYER

REX ARCHITECTURE P.C.  
DESIGN ARCHITECT

KENDALL HEATON ASSOCIATES, INC.  
ARCHITECT OF RECORD

FRONT INC.  
FACADE CONSULTANT

LERA - LESLIE E. ROBERTSON ASSOC.  
STRUCTURAL ENGINEER

WSP PARSONS BRINCKERHOFF  
MEP ENGINEER

WILES MENSCH  
CIVIL ENGINEER

MICHAEL BLADES  
ELEVATOR CONSULTANT

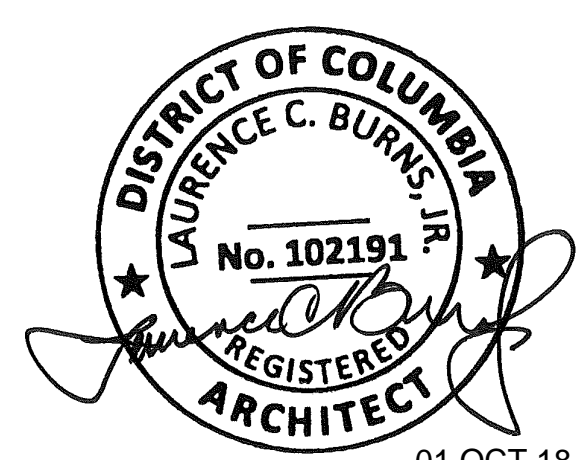
GEORGE SEXTON  
LIGHTING CONSULTANT

BAUMANN CONSULTING  
LEED CONSULTANT

CERAMI & ASSOCIATES  
ACOUSTIC CONSULTANT

ARUP  
LIFE SAFETY CONSULTANT

RICHTER & ASSOCIATES  
DRY UTILITIES CONSULTANT



01 OCT 18

1 01 OCT 18 ANTENNAE EXHIBIT

NO. DATE ISSUE

DRAWING TYPE

ARCHITECTURE

CAD FILENAME

DRAWING TITLE

ANTENNAE CUT SHEETS

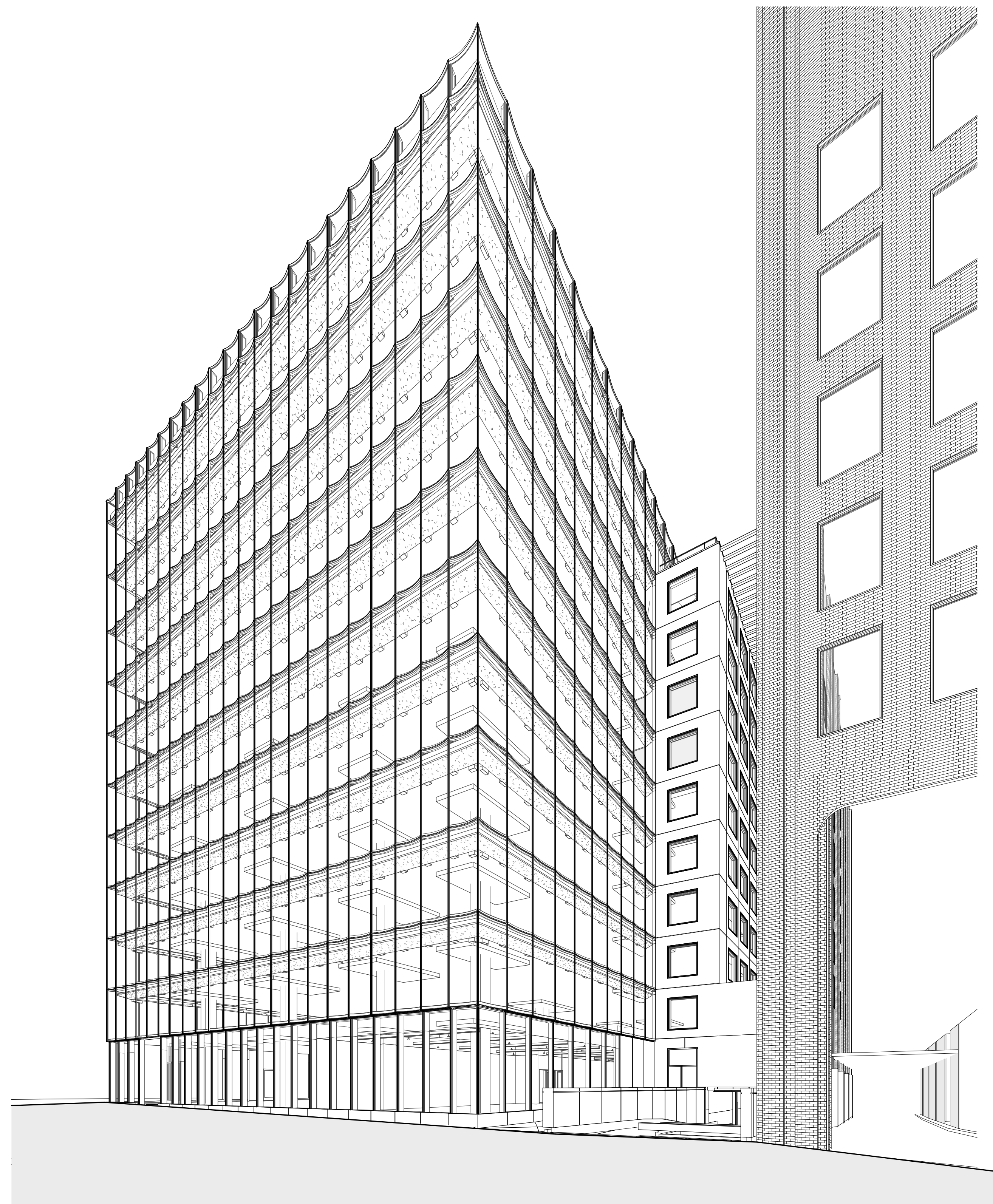
PROJECT NO.

15016

DRAWING NUMBER

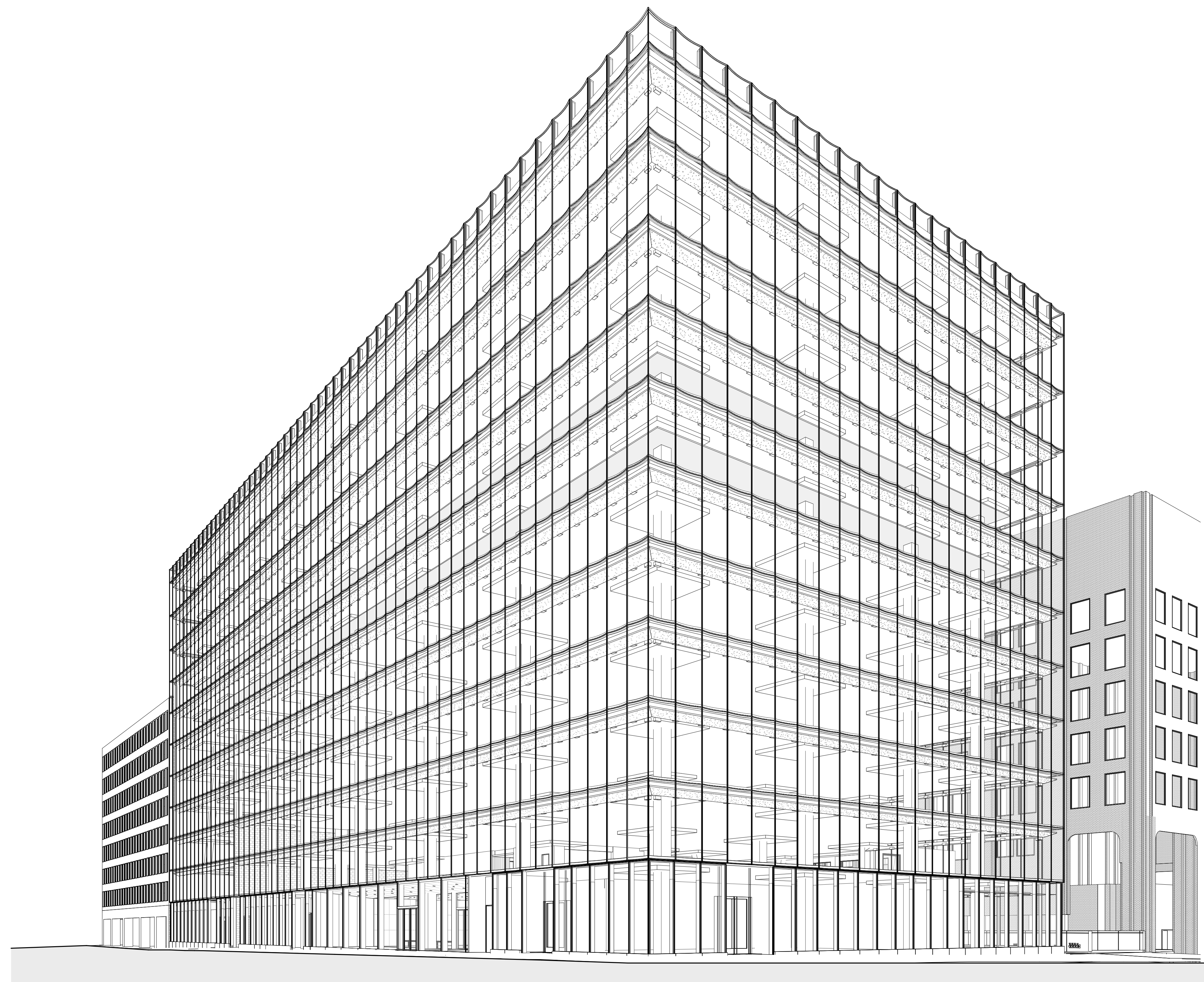
SK-8





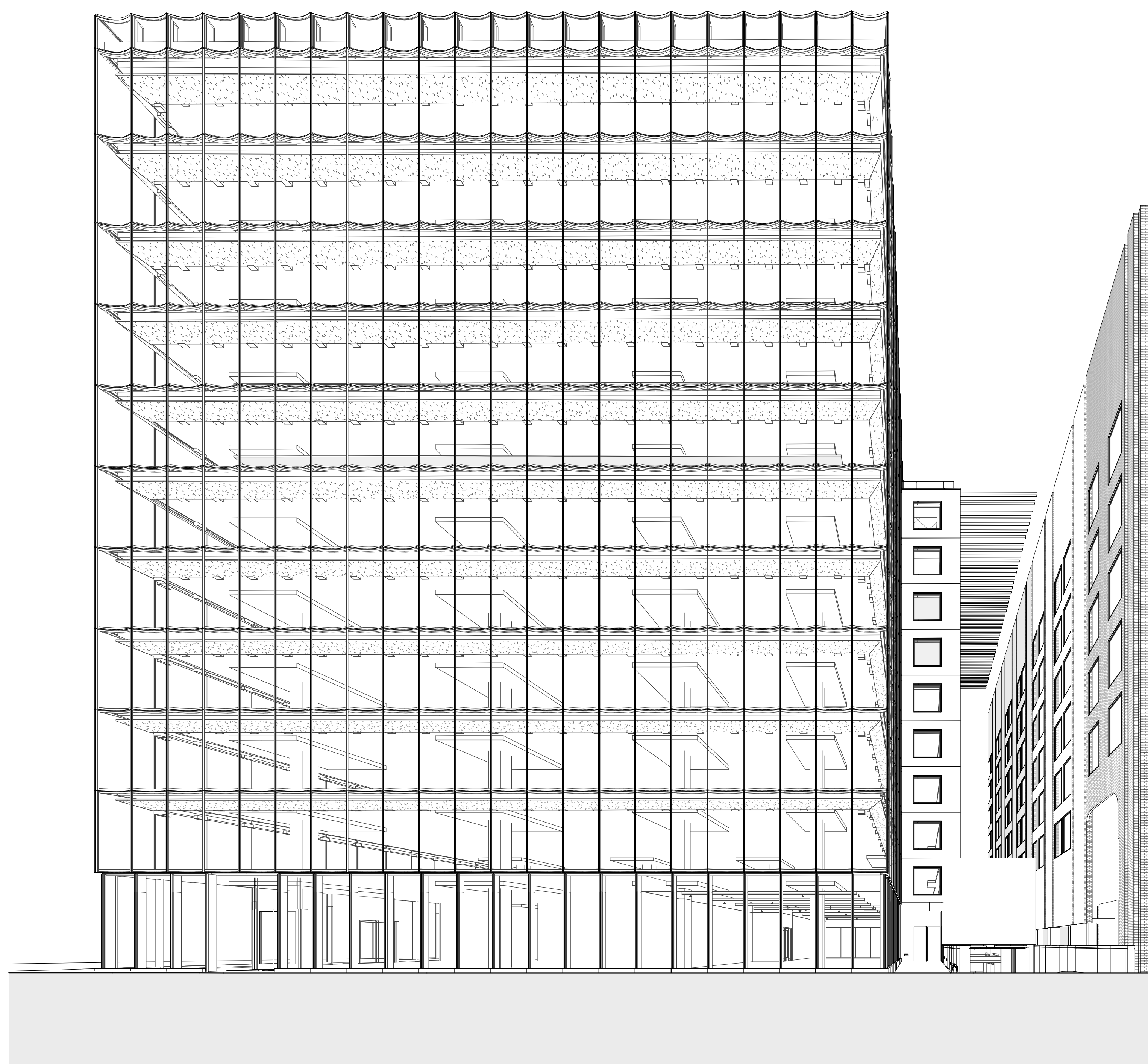
21ST STREET NW - VIEW FROM STREET LEVEL LOOKING EAST

22



M STREET NW / 21ST STREET NW - VIEW FROM STREET LEVEL LOOKING SOUTH EAST

4



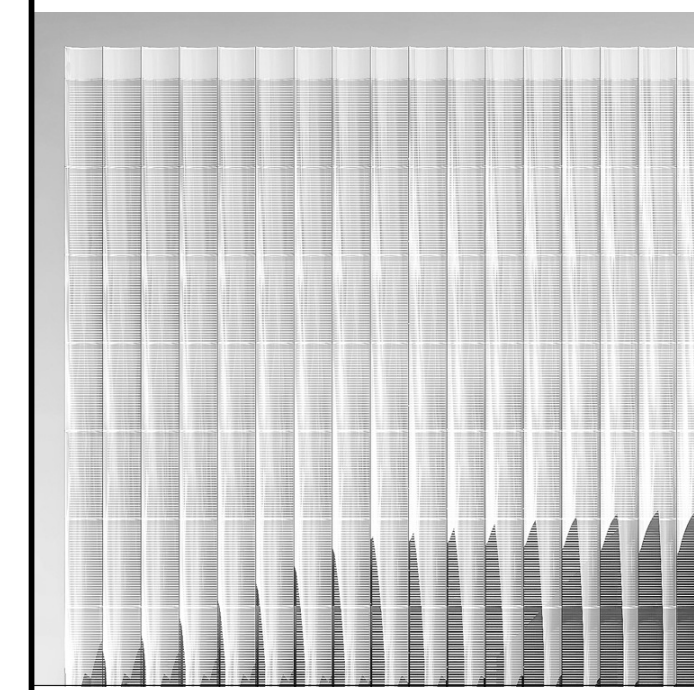
21ST STREET NW - VIEW FROM STREET LEVEL LOOKING EAST

19



M STREET NW - VIEW FROM STREET LEVEL LOOKING WEST

1



2050 M STREET

TISHMAN SPEYER

REX ARCHITECTURE P.C.  
DESIGN ARCHITECT

KENDALL HEATON ASSOCIATES, INC.  
ARCHITECT OF RECORD

FRONT INC.  
FACADE CONSULTANT

LERA - LESLIE E. ROBERTSON ASSOC.  
STRUCTURAL ENGINEER

WSP PARSONS BRINCKERHOFF  
MEP ENGINEER

WILES MENSCH  
CIVIL ENGINEER

MICHAEL BLADES  
ELEVATOR CONSULTANT

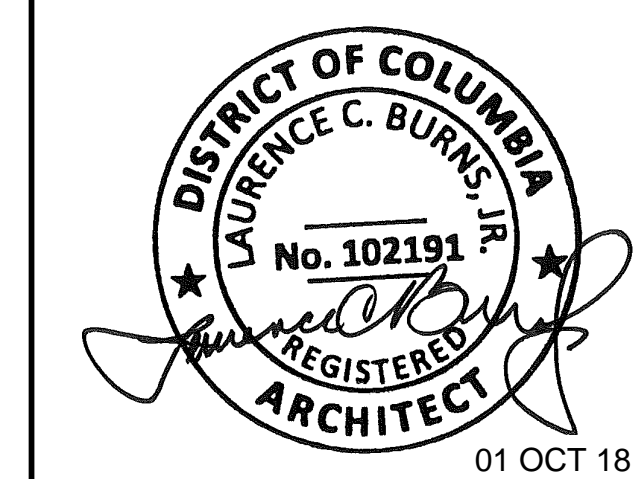
GEORGE SEXTON  
LIGHTING CONSULTANT

BAUMANN CONSULTING  
LEED CONSULTANT

CERAMI & ASSOCIATES  
ACOUSTIC CONSULTANT

ARUP  
LIFE SAFETY CONSULTANT

RICHTER & ASSOCIATES  
DRY UTILITIES CONSULTANT



1 01 OCT 18 ANTENNAE EXHIBIT  
NO. DATE ISSUE

ARCHITECTURE

BUILDING PERSPECTIVE

PROJECT NO. 15016 DRAWING NUMBER SK-9