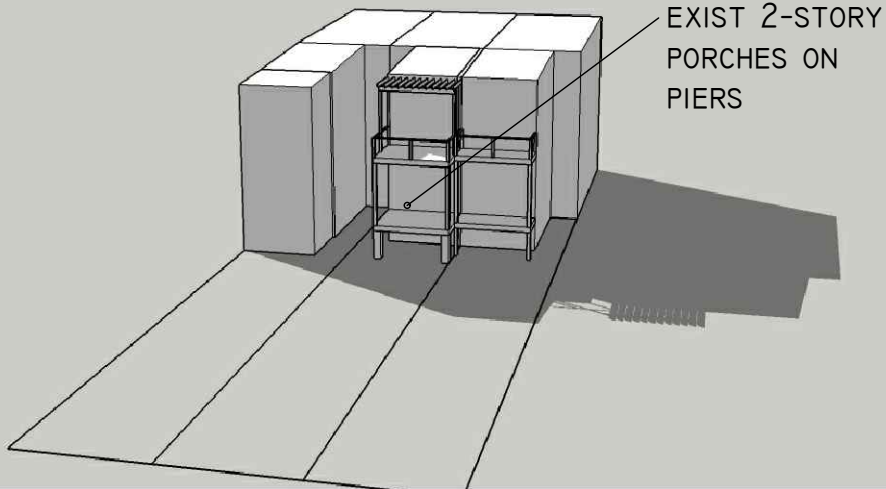


1350 E. CAPITOL ST NE

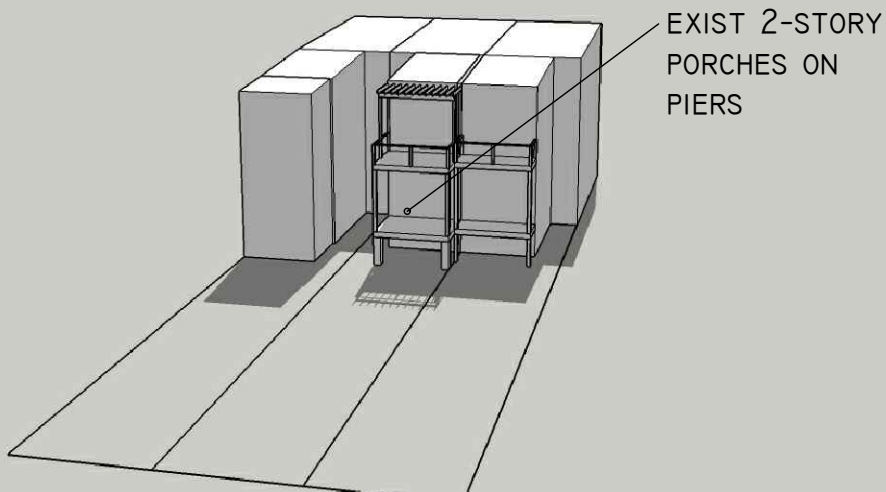
SHADOW STUDY OF THE EXISTING ADDITION

VERNAL EQUINOX & AUTUMNAL EQUINOX

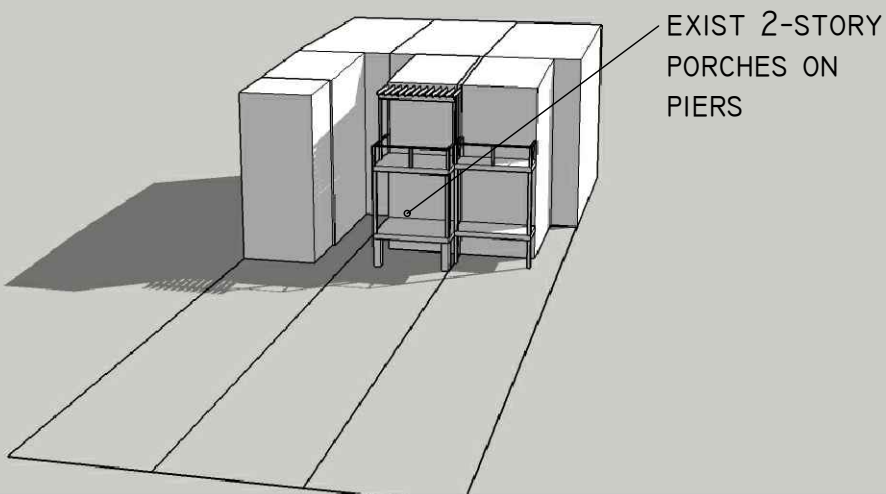
SHADOW STUDY:
1350 E. CAPITOL ST NE
9 AM
MARCH / SEPTEMBER 21ST



SHADOW STUDY:
1350 E. CAPITOL ST NE
12 PM
MARCH / SEPTEMBER 21ST



SHADOW STUDY:
1350 E. CAPITOL ST NE
3 PM
MARCH / SEPTEMBER 21ST

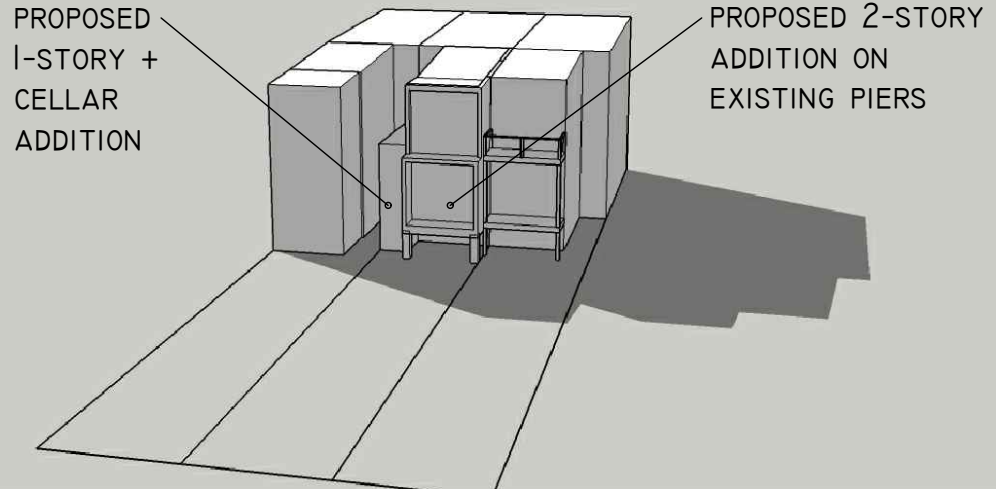


1350 E. CAPITOL ST NE

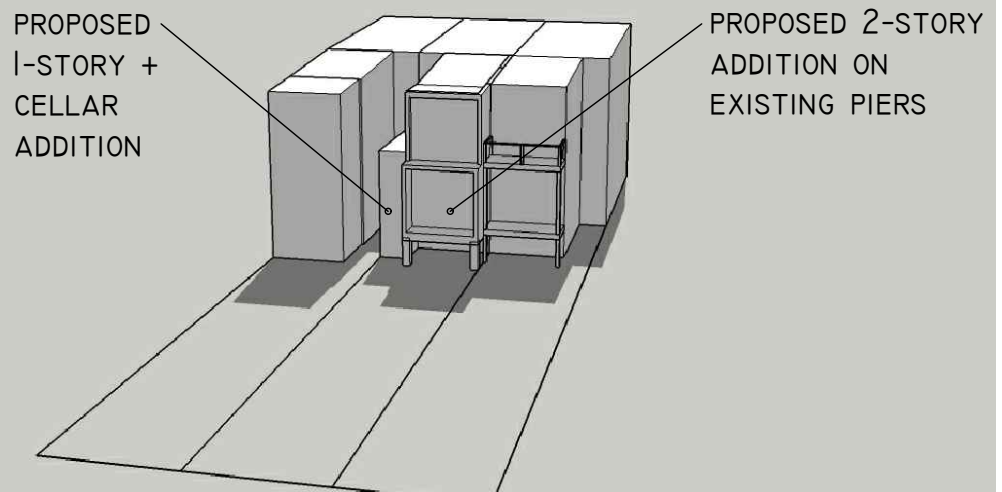
SHADOW STUDY OF PROPOSED ADDITION
REQUIRING ZONING RELIEF

VERNAL EQUINOX & AUTUMNAL EQUINOX

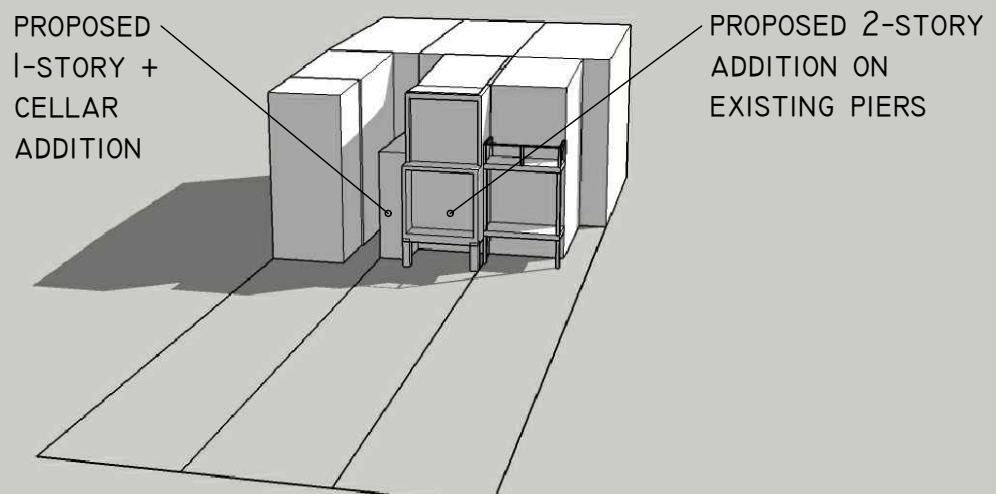
SHADOW STUDY:
1350 E. CAPITOL ST NE
9 AM
MARCH / SEPTEMBER 21ST



SHADOW STUDY:
1350 E. CAPITOL ST NE
12 PM
MARCH / SEPTEMBER 21ST



SHADOW STUDY:
1350 E. CAPITOL ST NE
3 PM
MARCH / SEPTEMBER 21ST

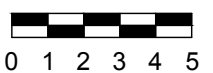


BZA SUBMISSION

OLD CITY DESIGN STUDIO®
1317 D ST, NE WASHINGTON, DC 20002
202. 455. 6237 OLD CITY DESIGN.US

CLIENT:
BOEHLER RESIDENCE
1350 EAST CAPITOL STREET NE
WASHINGTON, DC 20003

DATE: 03.10.2026
SCALE: NONE

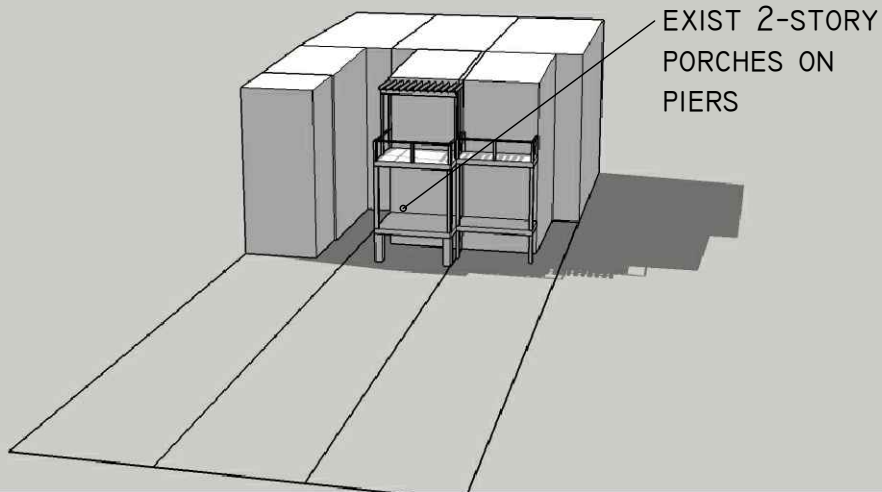


1350 E. CAPITOL ST NE

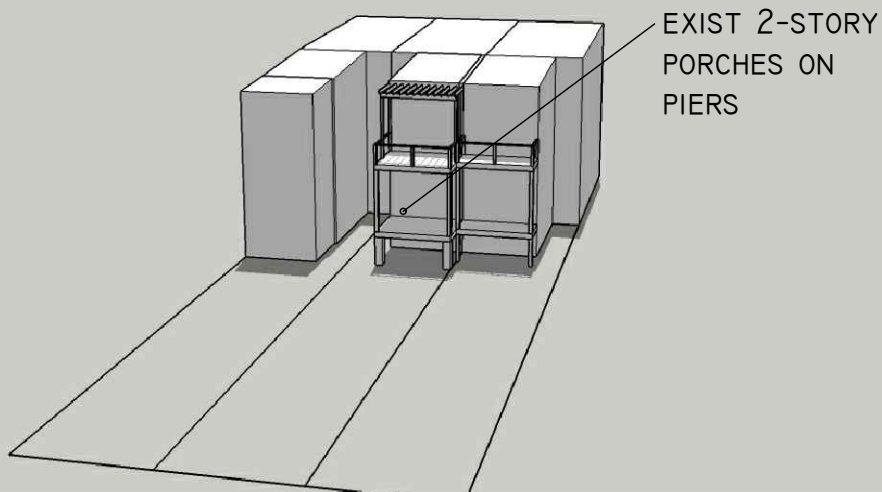
SHADOW STUDY OF THE EXISTING ADDITION

SUMMER SOLSTICE

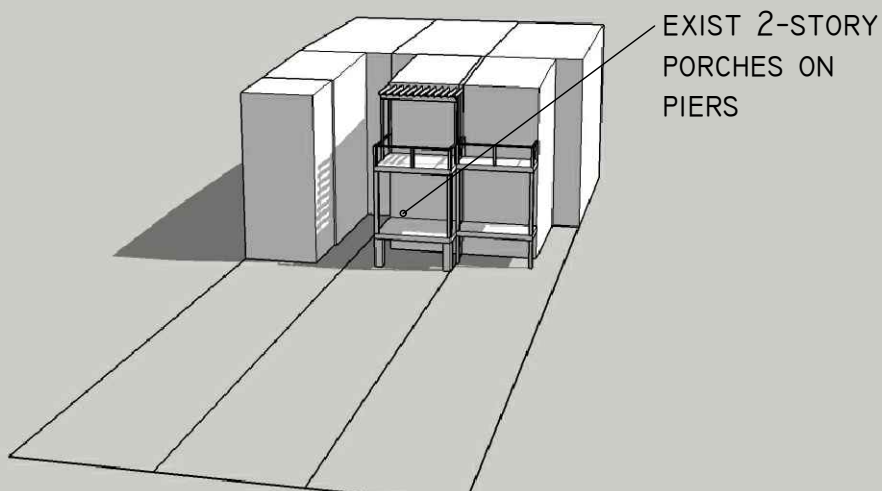
SHADOW STUDY:
1350 E. CAPITOL ST NE
9 AM
JUNE 21ST



SHADOW STUDY:
1350 E. CAPITOL ST NE
12 PM
JUNE 21ST



SHADOW STUDY:
1350 E. CAPITOL ST NE
3 PM
JUNE 21ST

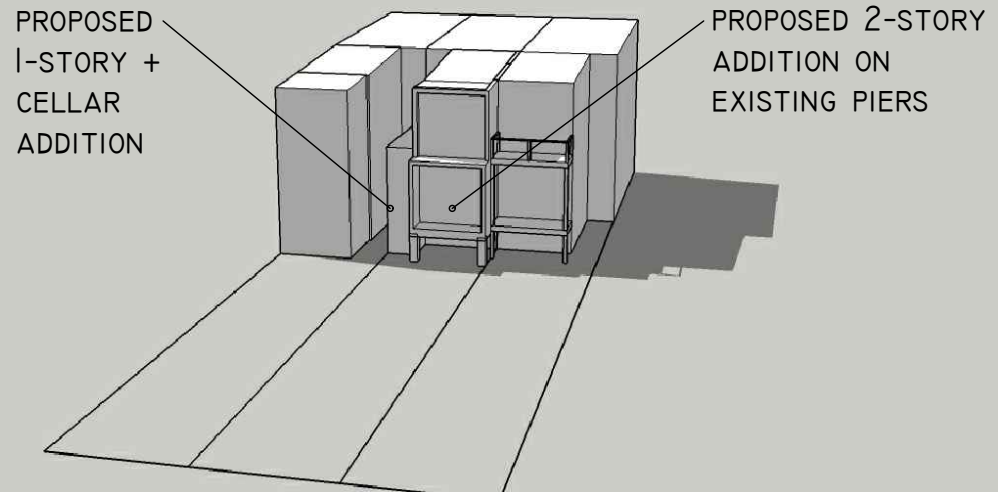


1350 E. CAPITOL ST NE

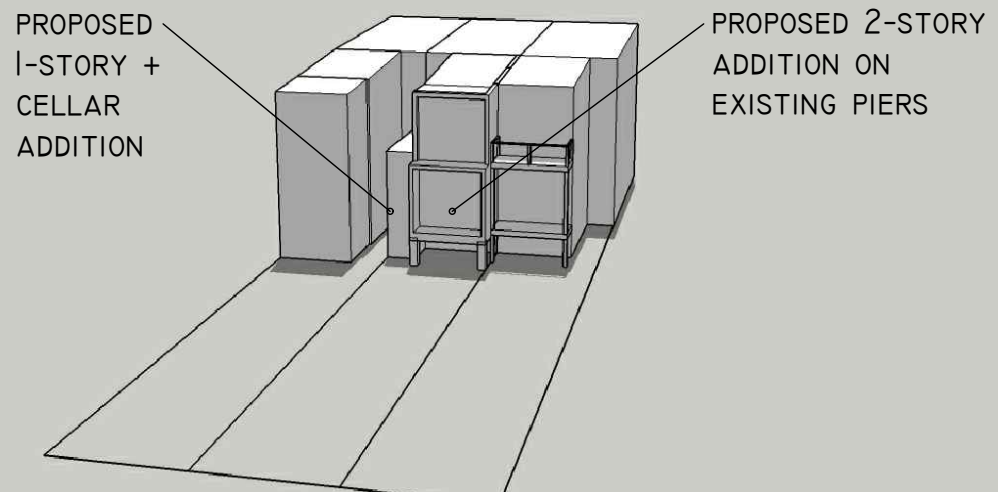
SHADOW STUDY OF PROPOSED ADDITION
REQUIRING ZONING RELIEF

SUMMER SOLSTICE

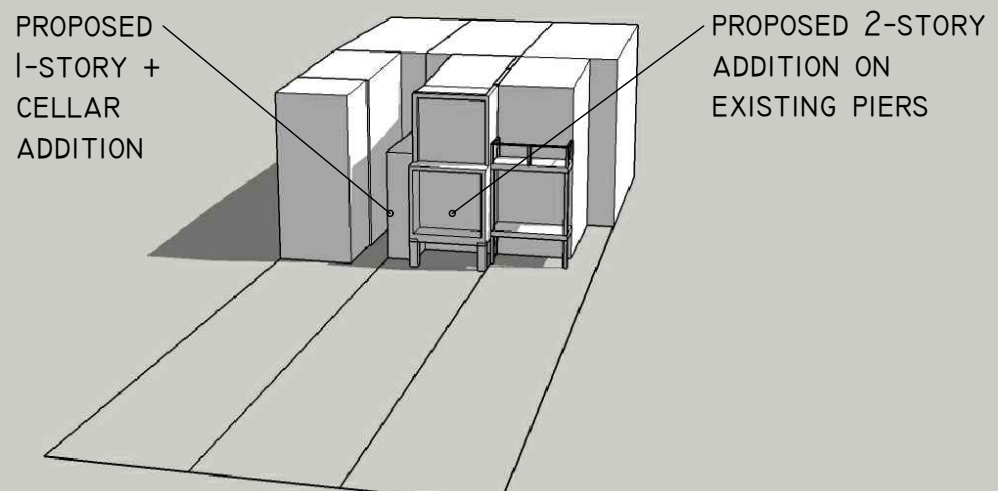
SHADOW STUDY:
1350 E. CAPITOL ST NE
9 AM
JUNE 21ST



SHADOW STUDY:
1350 E. CAPITOL ST NE
12 PM
JUNE 21ST



SHADOW STUDY:
1350 E. CAPITOL ST NE
3 PM
JUNE 21ST



BZA SUBMISSION

OLD CITY DESIGN STUDIO®
1317 D ST, NE WASHINGTON, DC 20002
202. 455. 6237 OLD CITY DESIGN.US

CLIENT:
BOEHLER RESIDENCE
1350 EAST CAPITOL STREET NE
WASHINGTON, DC 20003

DATE: 03.10.2026
SCALE: NONE 0 1 2 3 4 5

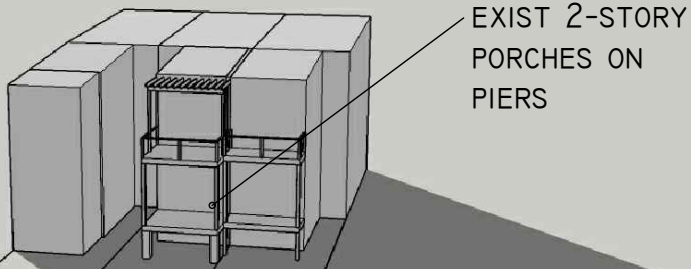
SHADOW STUDIES
SUMMER SOLSTICE

1350 E. CAPITOL ST NE

SHADOW STUDY OF THE EXISTING ADDITION

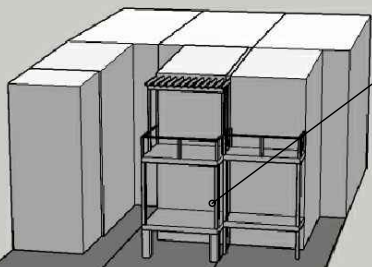
WINTER SOLSTICE

SHADOW STUDY:
1350 E. CAPITOL ST NE
9 AM
DECEMBER 21ST



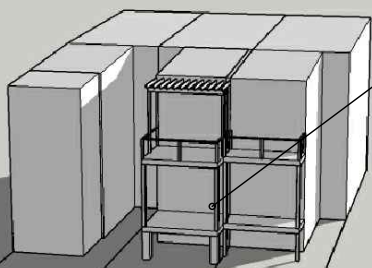
EXIST 2-STORY
PORCHES ON
PIERS

SHADOW STUDY:
1350 E. CAPITOL ST NE
12 PM
DECEMBER 21ST



EXIST 2-STORY
PORCHES ON
PIERS

SHADOW STUDY:
1350 E. CAPITOL ST NE
3 PM
DECEMBER 21ST



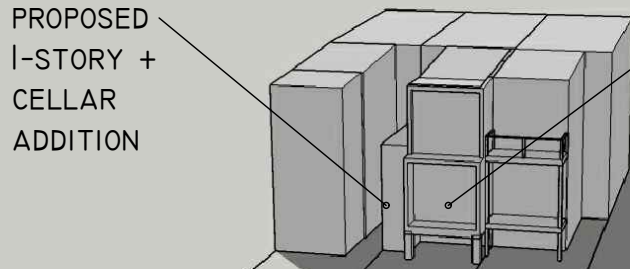
EXIST 2-STORY
PORCHES ON
PIERS

1350 E. CAPITOL ST NE

SHADOW STUDY OF PROPOSED ADDITION
REQUIRING ZONING RELIEF

WINTER SOLSTICE

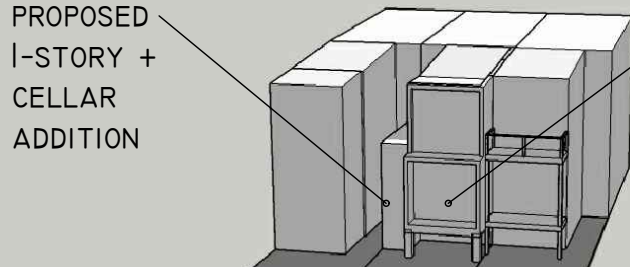
SHADOW STUDY:
1350 E. CAPITOL ST NE
9 AM
DECEMBER 21ST



PROPOSED
1-STORY +
CELLAR
ADDITION

PROPOSED 2-STORY
ADDITION ON
EXISTING PIERS

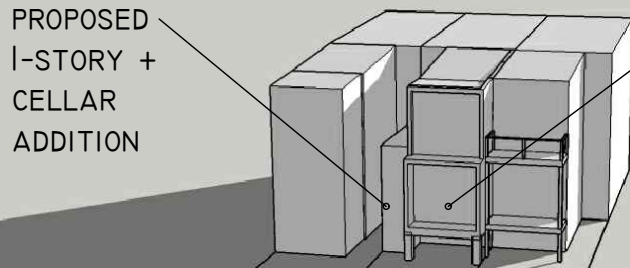
SHADOW STUDY:
1350 E. CAPITOL ST NE
12 PM
DECEMBER 21ST



PROPOSED
1-STORY +
CELLAR
ADDITION

PROPOSED 2-STORY
ADDITION ON
EXISTING PIERS

SHADOW STUDY:
1350 E. CAPITOL ST NE
3 PM
DECEMBER 21ST



PROPOSED
1-STORY +
CELLAR
ADDITION

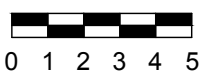
PROPOSED 2-STORY
ADDITION ON
EXISTING PIERS

BZA SUBMISSION

OLD CITY DESIGN STUDIO®
1317 D ST, NE WASHINGTON, DC 20002
202. 455. 6237 OLD CITY DESIGN.US

CLIENT:
BOEHMLER RESIDENCE
1350 EAST CAPITOL STREET NE
WASHINGTON, DC 20003

DATE: 03.10.2026
SCALE: NONE



SHADOW STUDIES
WINTER SOLSTICE