

GORDON
architects
A Professional Corporation

TELEPHONE: 202.333.9270
www.gordonarchitects.com

THIS DRAWING, THE DESIGNS INDICATED, THE
FORMAT AND THE ARRANGEMENTS ARE THE
PROPERTY OF GORDON ARCHITECTS AND
PROTECTED BY COPYRIGHT LAWS

Residential
Addition &
Remodeling

3546 Whitehaven Parkway NW
Washington, DC 20007

REVIEWS / REVISIONS		
NO.	DESCRIPTION	DATE
1	BZA Filing	11 Sept. 2025
2	BZA - Revised Shadow Studies	23 Sept. 2025
3	BZA - Revised Deck Lattice Panels	14 Oct. 2025

East Elevation
Site Section

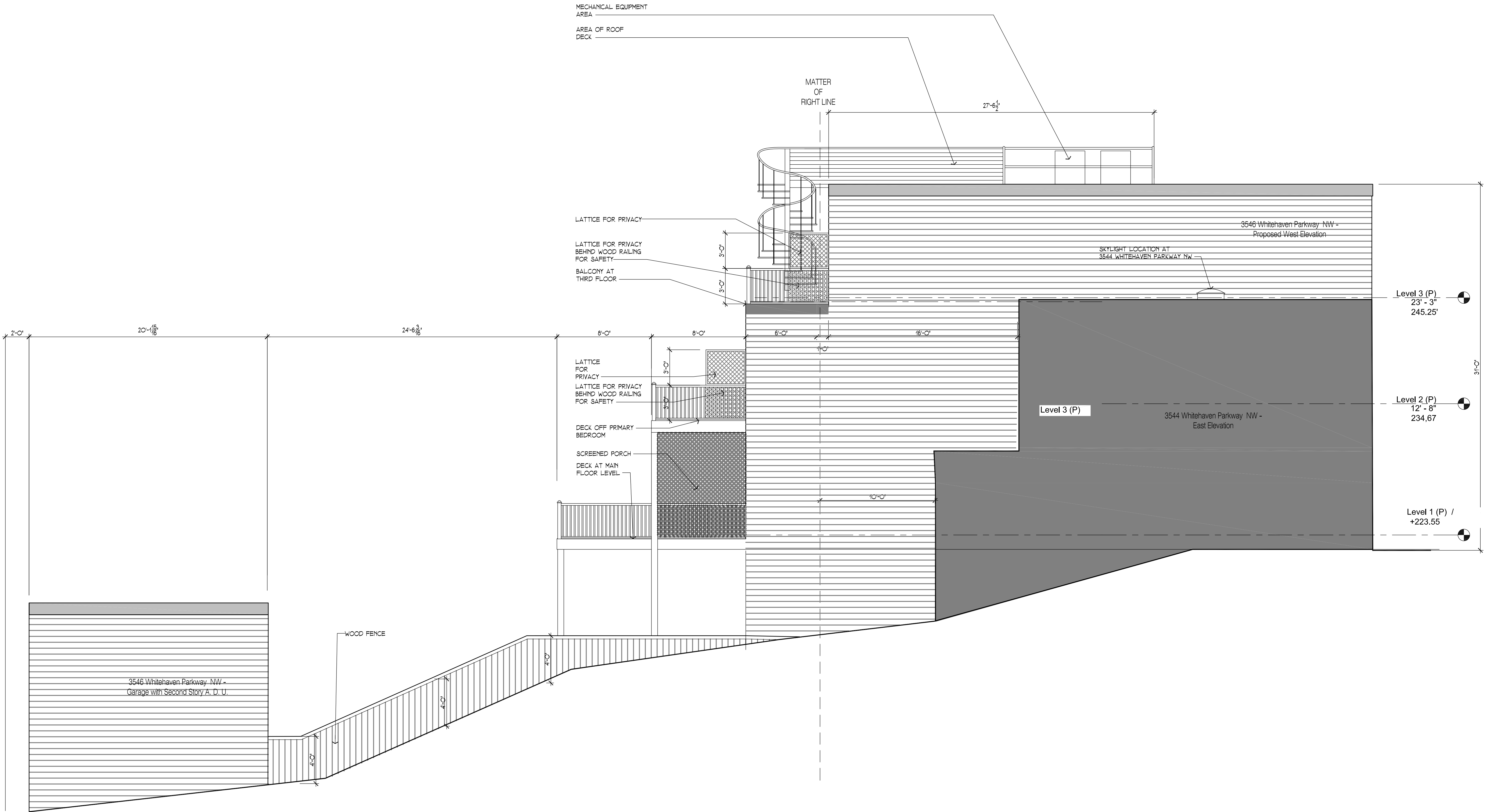
SCALE: AS NOTED

PROJECT NUMBER: 2508

DATE: 14 October 2025

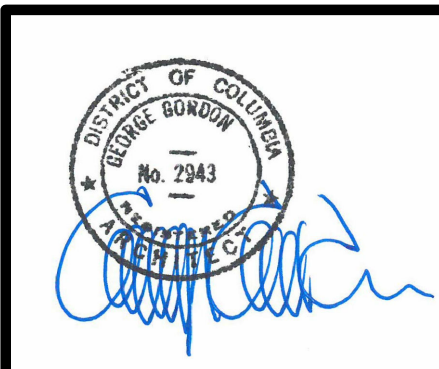
A004

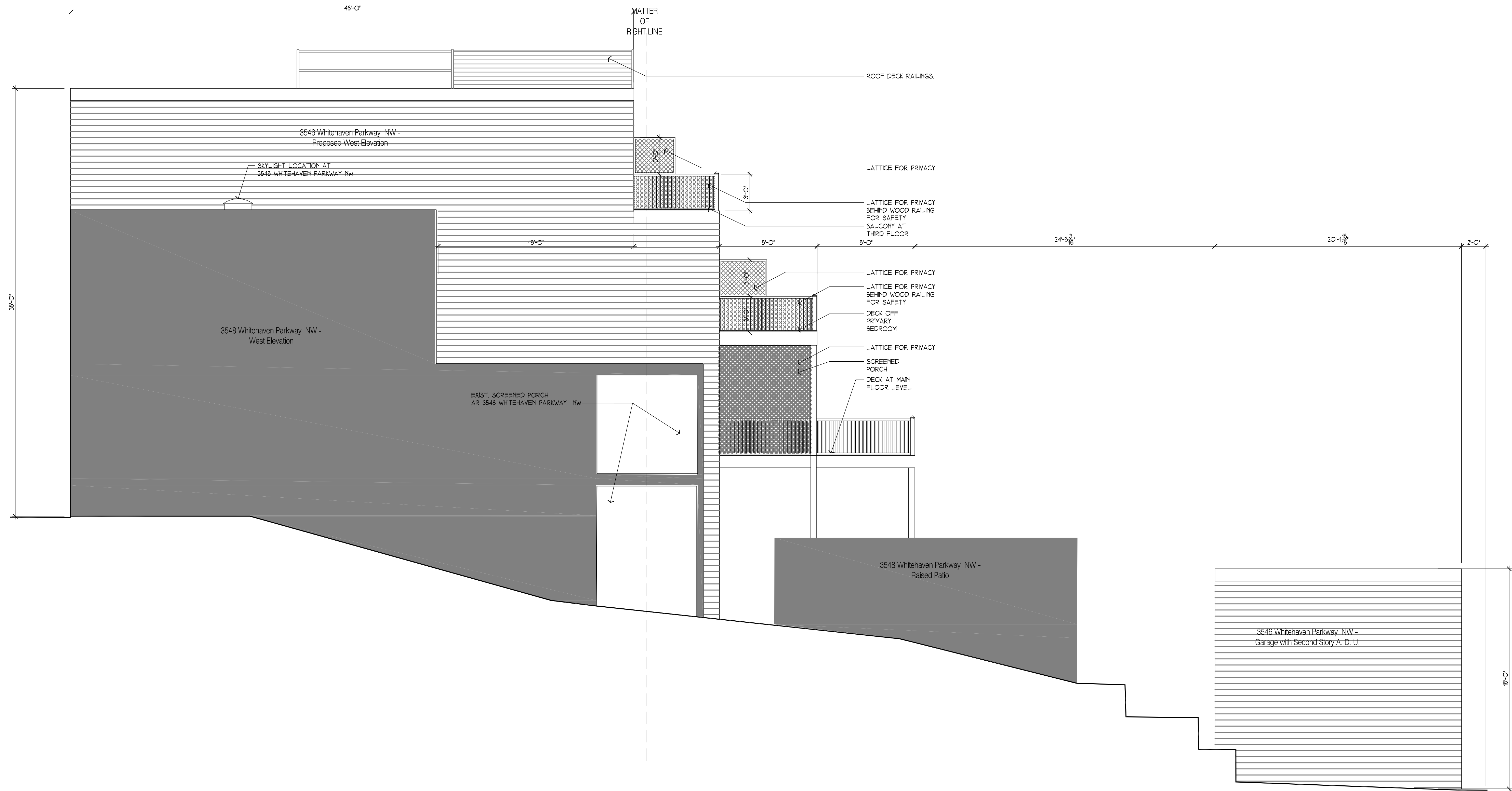
Board of Zoning Adjustment
District of Columbia
CASE NO. ZJ-2025
EXHIBIT NO. 02A



1
A004
SITE SECTION
EAST ELEVATION
SCALE: 1/4" = 1'-0"

I AM RESPONSIBLE FOR DETERMINING THAT
THE ARCHITECTURAL DESIGNS INCLUDED IN
THIS APPLICATION ARE IN COMPLIANCE WITH
ALL LAWS AND REGULATIONS OF THE
DISTRICT OF COLUMBIA. I HAVE PERSONALLY
PREPARED, OR DIRECTLY SUPERVISED THE
DEVELOPMENT OF, THE ARCHITECTURAL
DESIGNS INCLUDED IN THIS APPLICATION.

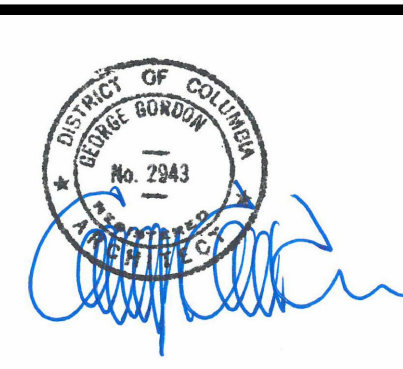




1
A003

SITE SECTION
WEST ELEVATION
SCALE: 1/4" = 1'-0"

I AM RESPONSIBLE FOR DETERMINING THAT THE ARCHITECTURAL DESIGNS INCLUDED IN THIS APPLICATION ARE IN COMPLIANCE WITH ALL LAWS AND REGULATIONS OF THE DISTRICT OF COLUMBIA. I HAVE PERSONALLY PREPARED, OR DIRECTLY SUPERVISED THE DEVELOPMENT OF, THE ARCHITECTURAL DESIGNS INCLUDED IN THIS APPLICATION.



DCRA APPROVAL BLOCK

GORDON
architects
A Professional Corporation

TELEPHONE: 202.333.9270
www.gordonarchitects.com

THIS DRAWING, THE DESIGNS INDICATED, THE FORMAT AND THE ARRANGEMENTS ARE THE PROPERTY OF GORDON ARCHITECTS AND PROTECTED BY COPYRIGHT LAWS

Residential Addition & Remodeling

3546 Whitehaven Parkway NW
Washington, DC 20007

REVIEWS / REVISIONS		
NO.	DESCRIPTION	DATE
1	BZA Filing	11 Sept. 2025
2	BZA - Revised Shadow Studies	23 Sept. 2025
3	BZA - Revised Deck Lattice Panels	14 Oct. 2025

West Elevation Site Section

SCALE: AS NOTED

PROJECT NUMBER: 2508

DATE: 14 October 2025

A003