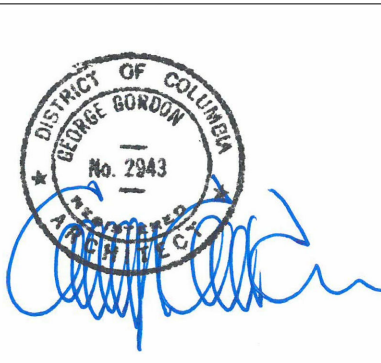


1 SITE PLAN - EXISTING/  
A001 SCALE: 1/8" = 1'-0"

I AM RESPONSIBLE FOR DETERMINING THAT THE ARCHITECTURAL DESIGNS INCLUDED IN THIS APPLICATION ARE IN COMPLIANCE WITH ALL LAWS AND REGULATIONS OF THE DISTRICT OF COLUMBIA. I HAVE PERSONALLY PREPARED, OR DIRECTLY SUPERVISED THE DEVELOPMENT OF, THE ARCHITECTURAL DESIGNS INCLUDED IN THIS APPLICATION.



DCRA APPROVAL BLOCK

GORDON architects  
A Professional Corporation

TELEPHONE: 202.333.9270  
www.gordonarchitects.com

THIS DRAWING, THE DESIGNS INDICATED, THE FORMAT AND THE ARRANGEMENTS ARE THE PROPERTY OF GORDON ARCHITECTS AND PROTECTED BY COPYRIGHT LAWS

Residential  
Addition &  
Remodeling

3546 Whitehaven Parkway NW  
Washington, DC 20007

REVIEWS / REVISIONS		
NO.	DESCRIPTION	DATE
1	BZA Filing	11 Sept. 2025
2	BZA - Revised Shadow Studies	17 Sept. 2025

Site Plan  
Existing

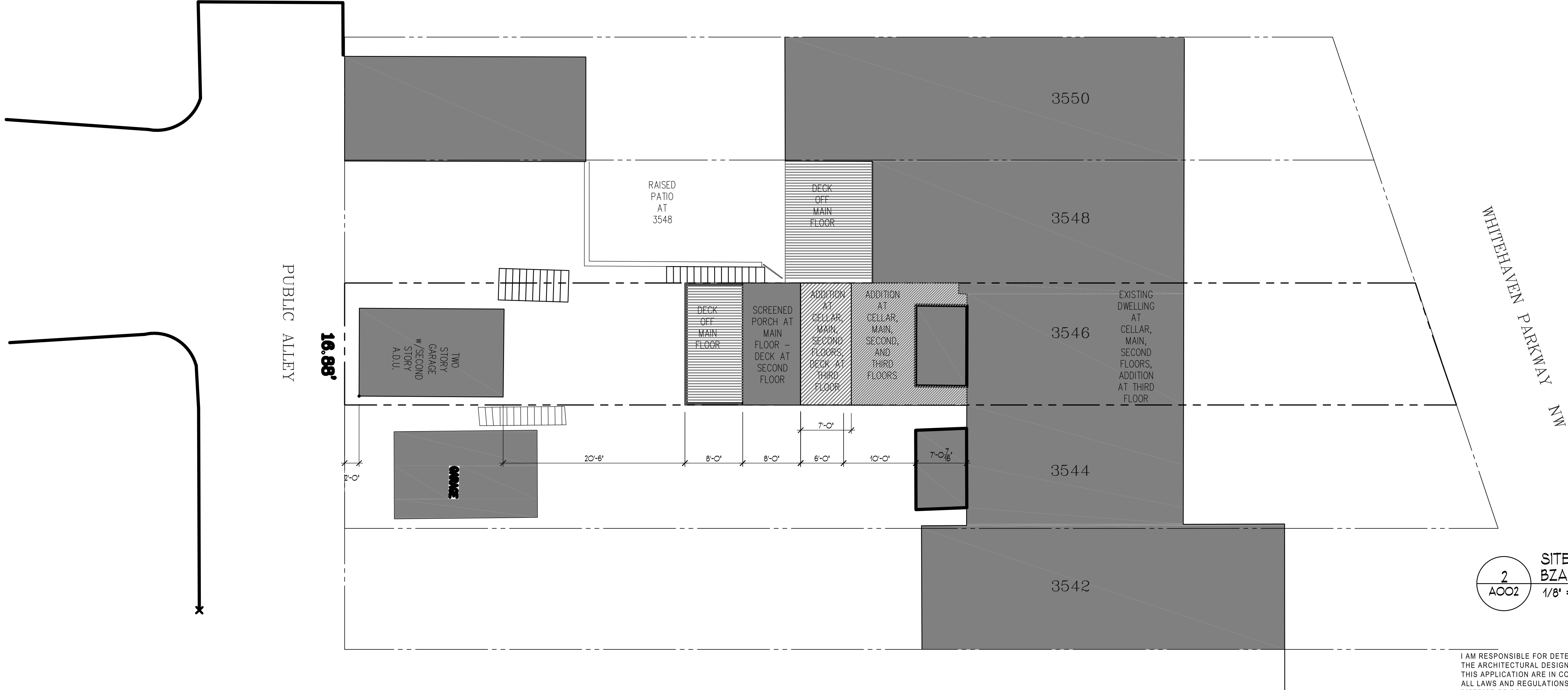
SCALE: AS NOTED

PROJECT NUMBER: 2508

DATE: 17 September 2025

A001

Board of Zoning Adjustment  
District of Columbia  
CASE NO. 2508  
EXHIBIT NO. 39C



2  
AOO2

SITE PLAN - EXISTING/  
BZA PROPOSED ADDITION  
1/8" = 1'-0"

I AM RESPONSIBLE FOR DETERMINING THAT THE ARCHITECTURAL DESIGNS INCLUDED IN THIS APPLICATION ARE IN COMPLIANCE WITH ALL LAWS AND REGULATIONS OF THE DISTRICT OF COLUMBIA. I HAVE PERSONALLY PREPARED, OR DIRECTLY SUPERVISED THE DEVELOPMENT OF, THE ARCHITECTURAL DESIGNS INCLUDED IN THIS APPLICATION.





DCRA APPROVAL BLOCK

GORDON  
architects

A Professional Corporation

TELEPHONE: 202.333.9270  
www.gordonarchitects.com

C

THIS DRAWING, THE DESIGNS INDICATED, THE  
FORMAT AND THE ARRANGEMENTS ARE THE  
PROPERTY OF GORDON ARCHITECTS AND  
PROTECTED BY COPYRIGHT LAWS

Residential  
Addition &  
Remodeling

3546 Whitehaven Parkway NW  
Washington, DC 20007

REVIEWS / REVISIONS		
NO.	DESCRIPTION	DATE
1	BZA Filing	11 Sept. 2025
2	BZA - Revised Shadow Studies	23 Sept. 2025
3	BZA - Revised Deck Layout	27 Sept. 2025

Floor Plans  
BZA Proposal

SCALE: AS NOTED

PROJECT NUMBER: 2508

DATE: 27 September 2025

4  
A001

PROPOSED  
THIRD FLOOR PLAN  
1/4" = 1'-0"

3  
A001

PROPOSED  
SECOND FLOOR PLAN  
1/4" = 1'-0"

2  
A001

PROPOSED  
FIRST FLOOR PLAN  
1/4" = 1'-0"

1  
A001

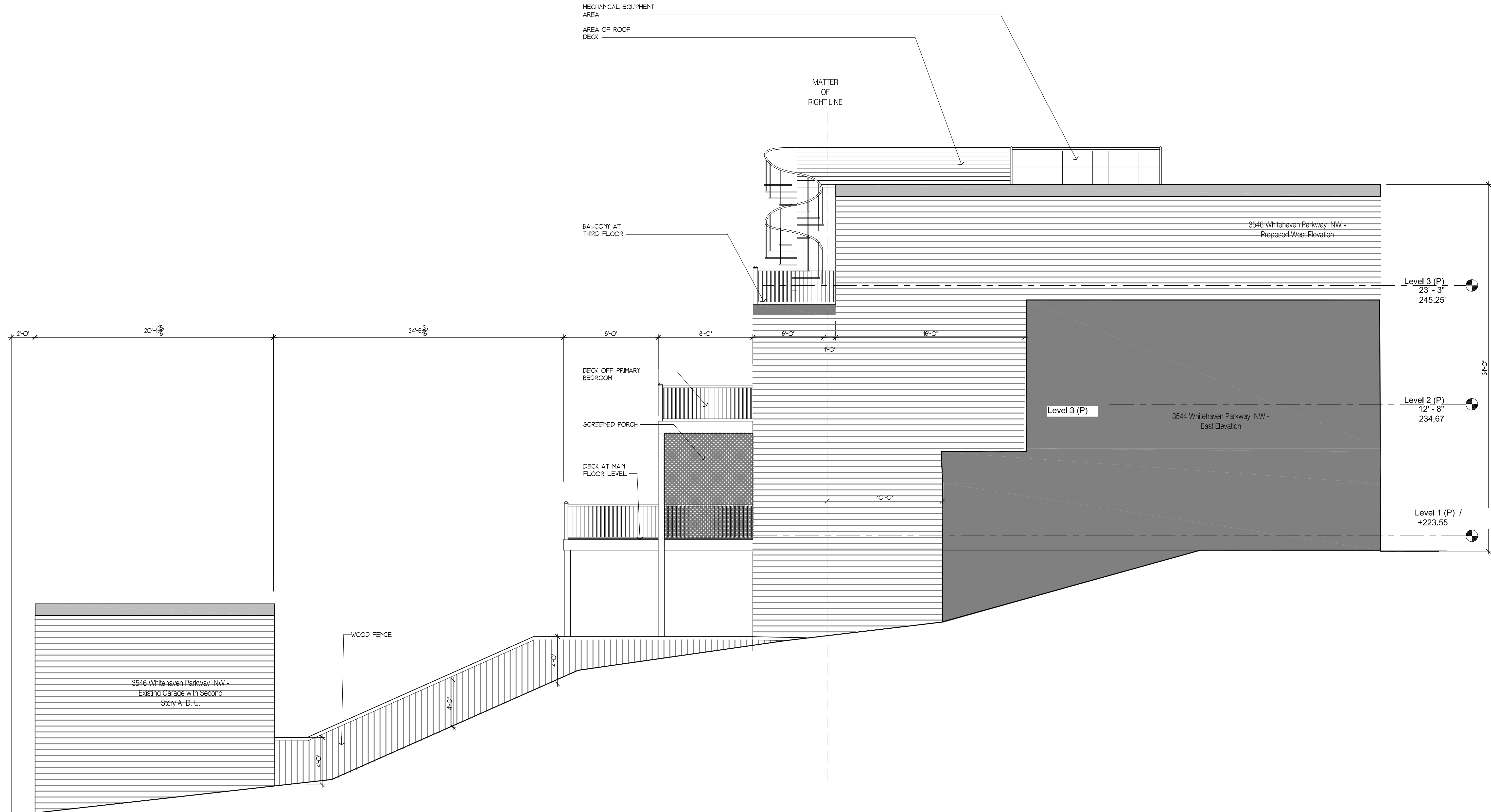
PROPOSED  
CELLAR PLAN  
1/4" = 1'-0"

I AM RESPONSIBLE FOR DETERMINING THAT  
THE ARCHITECTURAL DESIGNS INCLUDED IN  
THIS APPLICATION ARE IN COMPLIANCE WITH  
ALL LAWS AND REGULATIONS OF THE  
DISTRICT OF COLUMBIA. I HAVE PERSONALLY  
PREPARED, OR DIRECTLY SUPERVISED THE  
DEVELOPMENT OF, THE ARCHITECTURAL  
DESIGNS INCLUDED IN THIS APPLICATION.

DISTRICT OF COLUMBIA  
OFFICE OF THE  
COMMISSIONER OF  
PLANNING  
No. 2943  
RECEIVED

A001

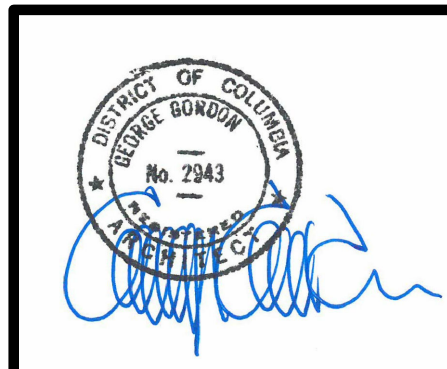




1  
A004

SITE SECTION  
EAST ELEVATION  
SCALE: 1/4" = 1'-0"

I AM RESPONSIBLE FOR DETERMINING THAT THE ARCHITECTURAL DESIGNS INCLUDED IN THIS APPLICATION ARE IN COMPLIANCE WITH ALL LAWS AND REGULATIONS OF THE DISTRICT OF COLUMBIA. I HAVE PERSONALLY PREPARED, OR DIRECTLY SUPERVISED THE DEVELOPMENT OF, THE ARCHITECTURAL DESIGNS INCLUDED IN THIS APPLICATION.



DCRA APPROVAL BLOCK

**GORDON**  
architects  
A Professional Corporation

TELEPHONE: 202.333.9270  
www.gordonarchitects.com

THIS DRAWING, THE DESIGNS INDICATED, THE FORMAT AND THE ARRANGEMENTS ARE THE PROPERTY OF GORDON ARCHITECTS AND PROTECTED BY COPYRIGHT LAWS

## Residential Addition & Remodeling

3546 Whitehaven Parkway NW  
Washington, DC 20007

REVIEWS / REVISIONS		
NO.	DESCRIPTION	DATE
1	BZA Filing	11 Sept. 2025
2	BZA - Revised Shadow Studies	23 Sept. 2025
3	BZA - Revised Deck Layout	29 Sept. 2025

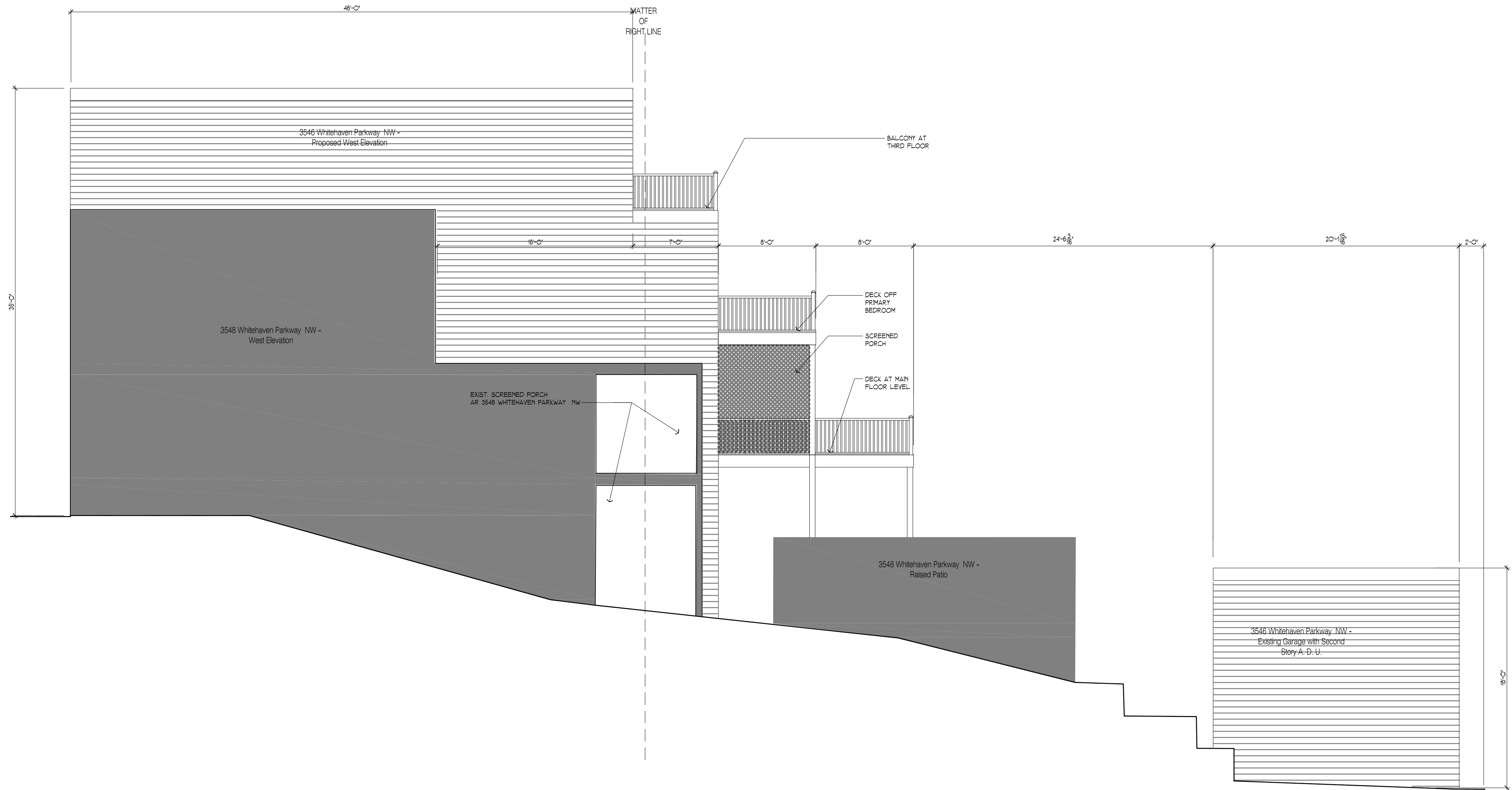
## East Elevation Site Section

SCALE: AS NOTED

PROJECT NUMBER: 2508

DATE: 29 September 2025

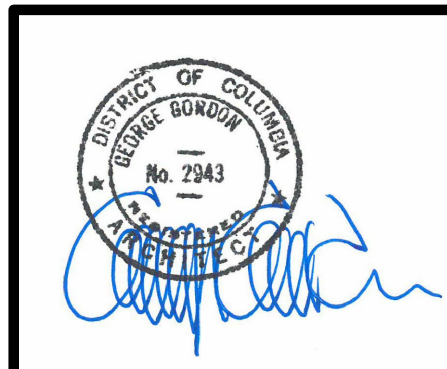
# A004



1  
A003

SITE SECTION  
WEST ELEVATION  
SCALE: 1/4" = 1'-0"

I AM RESPONSIBLE FOR DETERMINING THAT THE ARCHITECTURAL DESIGNS INCLUDED IN THIS APPLICATION ARE IN COMPLIANCE WITH ALL LAWS AND REGULATIONS OF THE DISTRICT OF COLUMBIA. I HAVE PERSONALLY PREPARED, OR DIRECTLY SUPERVISED THE DEVELOPMENT OF, THE ARCHITECTURAL DESIGNS INCLUDED IN THIS APPLICATION.



DCRA APPROVAL BLOCK

**GORDON**  
architects  
A Professional Corporation

TELEPHONE: 202.333.9270  
www.gordonarchitects.com

THIS DRAWING, THE DESIGNS INDICATED, THE FORMAT AND THE ARRANGEMENTS ARE THE PROPERTY OF GORDON ARCHITECTS AND PROTECTED BY COPYRIGHT LAWS

## Residential Addition & Remodeling

3546 Whitehaven Parkway NW  
Washington, DC 20007

REVIEWS / REVISIONS		
NO.	DESCRIPTION	DATE
1	BZA Filing	11 Sept. 2025
2	BZA - Revised Shadow Studies	23 Sept. 2025
3	BZA - Revised Deck Layout	29 Sept. 2025

## West Elevation Site Section

SCALE: AS NOTED

PROJECT NUMBER: 2508

DATE: 29 September 2025

# A003