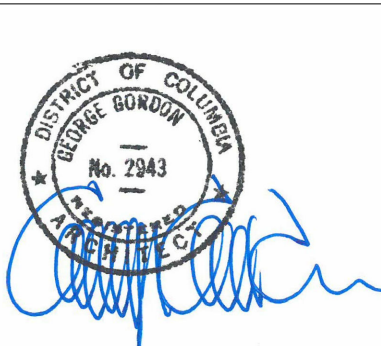


1 SITE PLAN - EXISTING/  
A001 SCALE: 1/8" = 1'-0"

I AM RESPONSIBLE FOR DETERMINING THAT THE ARCHITECTURAL DESIGNS INCLUDED IN THIS APPLICATION ARE IN COMPLIANCE WITH ALL LAWS AND REGULATIONS OF THE DISTRICT OF COLUMBIA. I HAVE PERSONALLY PREPARED, OR DIRECTLY SUPERVISED THE DEVELOPMENT OF, THE ARCHITECTURAL DESIGNS INCLUDED IN THIS APPLICATION.



DCRA APPROVAL BLOCK

GORDON architects  
A Professional Corporation

TELEPHONE: 202.333.9270  
www.gordonarchitects.com

THIS DRAWING, THE DESIGNS INDICATED, THE FORMAT AND THE ARRANGEMENTS ARE THE PROPERTY OF GORDON ARCHITECTS AND PROTECTED BY COPYRIGHT LAWS

Residential Addition & Remodeling

3546 Whitehaven Parkway NW  
Washington, DC 20007

REVIEWS / REVISIONS		
NO.	DESCRIPTION	DATE
1	BZA Filing	11 Sept. 2025
2	BZA - Revised Shadow Studies	17 Sept. 2025

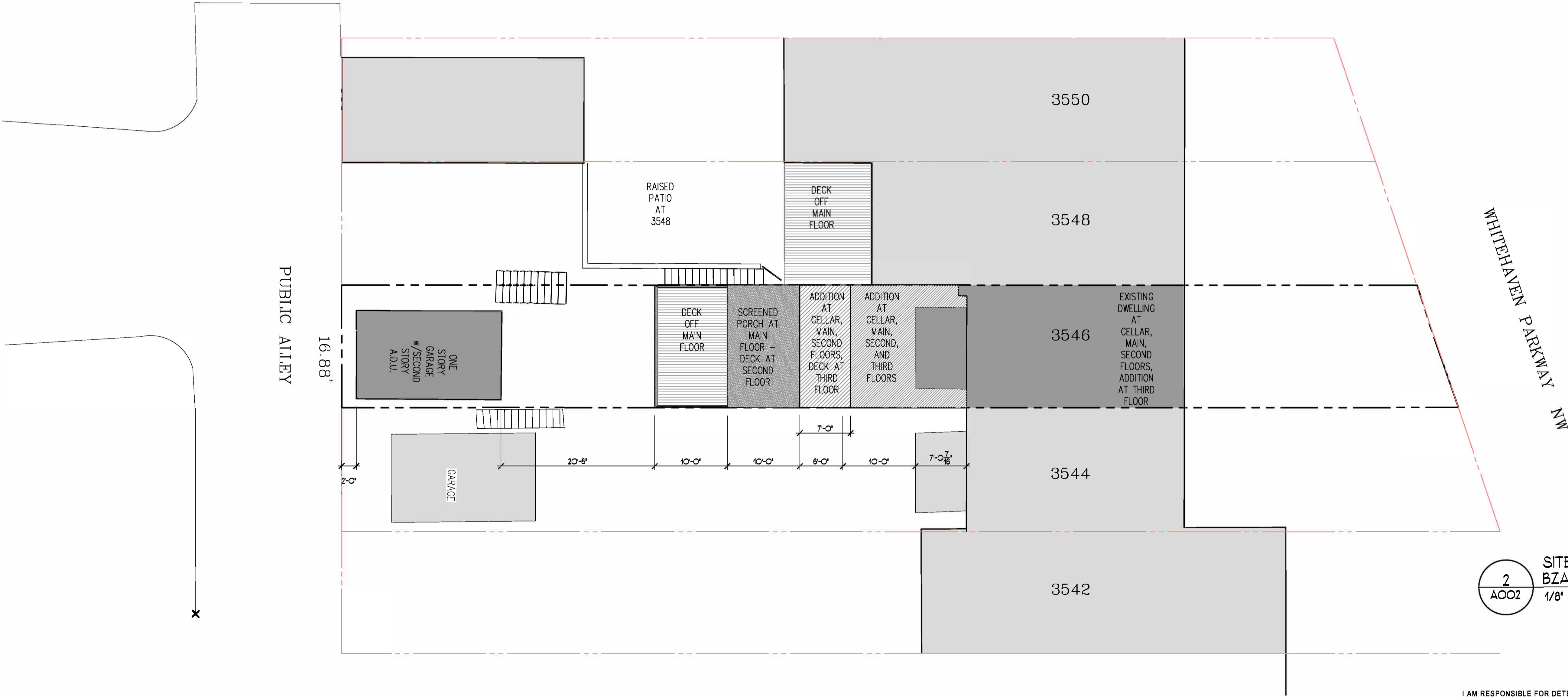
Site Plan Existing

SCALE: AS NOTED

PROJECT NUMBER: 2508

DATE: 17 September 2025

A001



2  
AOO2

SITE PLAN -  
BZA PROPOSED ADDITION  
1/8" = 1'-0"

I AM RESPONSIBLE FOR DETERMINING THAT THE ARCHITECTURAL DESIGNS INCLUDED IN THIS APPLICATION ARE IN COMPLIANCE WITH ALL LAWS AND REGULATIONS OF THE DISTRICT OF COLUMBIA. I HAVE PERSONALLY PREPARED, OR DIRECTLY SUPERVISED THE DEVELOPMENT OF, THE ARCHITECTURAL DESIGNS INCLUDED IN THIS APPLICATION.





DCRA APPROVAL BLOCK

GORDON  
architects

A Professional Corporation

TELEPHONE: 202.333.9270  
www.gordonarchitects.com

C

THIS DRAWING, THE DESIGNS INDICATED, THE FORMAT AND THE ARRANGEMENTS ARE THE PROPERTY OF GORDON ARCHITECTS AND PROTECTED BY COPYRIGHT LAWS

Residential  
Addition &  
Remodeling

3546 Whitehaven Parkway NW  
Washington, DC 20007

REVIEWS / REVISIONS		
NO.	DESCRIPTION	DATE
1	BZA Filing	11 Sept. 2025

Floor Plans  
BZA Proposal

SCALE:AS NOTED

PROJECT NUMBER:2508

DATE:11 September 2025

A001

**GORDON**  
architects  
A Professional Corporation

TELEPHONE: 202.333.9270  
www.gordonarchitects.com

THIS DRAWING, THE DESIGNS INDICATED, THE  
 FORMAT AND THE ARRANGEMENTS ARE THE  
 PROPERTY OF GORDON ARCHITECTS AND  
 PROTECTED BY COPYRIGHT LAWS

# Residential Addition & Remodeling

3546 Whitehaven Parkway NW  
Washington, DC 20007

3546 Whitehaven Parkway NW  
Washington, DC 20007

REVIEWS / REVISIONS		
NO.	DESCRIPTION	DATE
1	BZA Filing	11 Sept. 2025

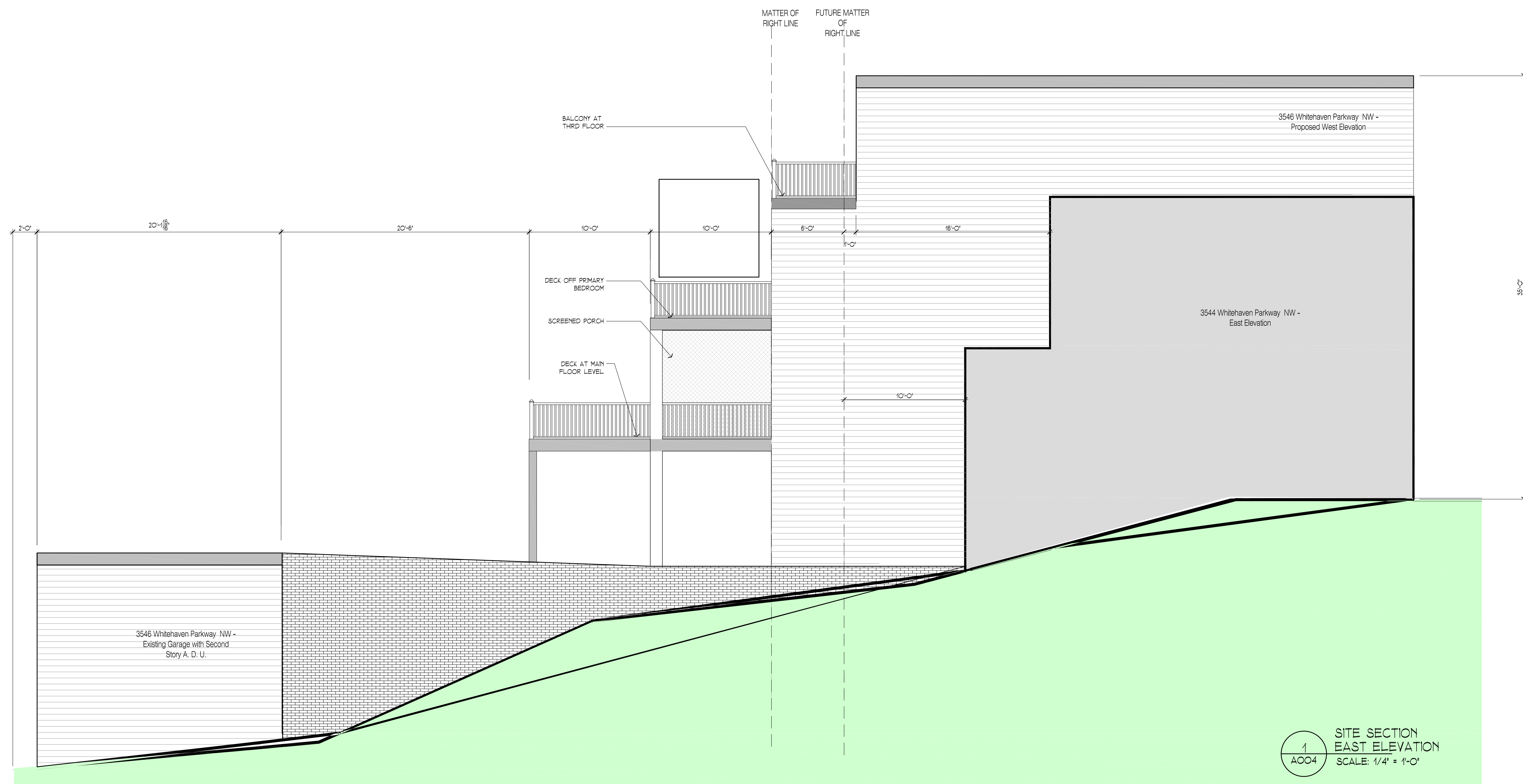
East Elevation  
Site Section

SCALE: AS NOTED

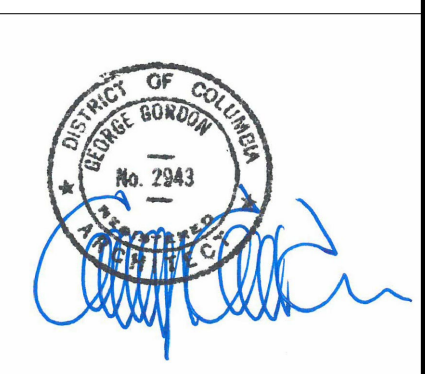
PROJECT NUMBER: 2508

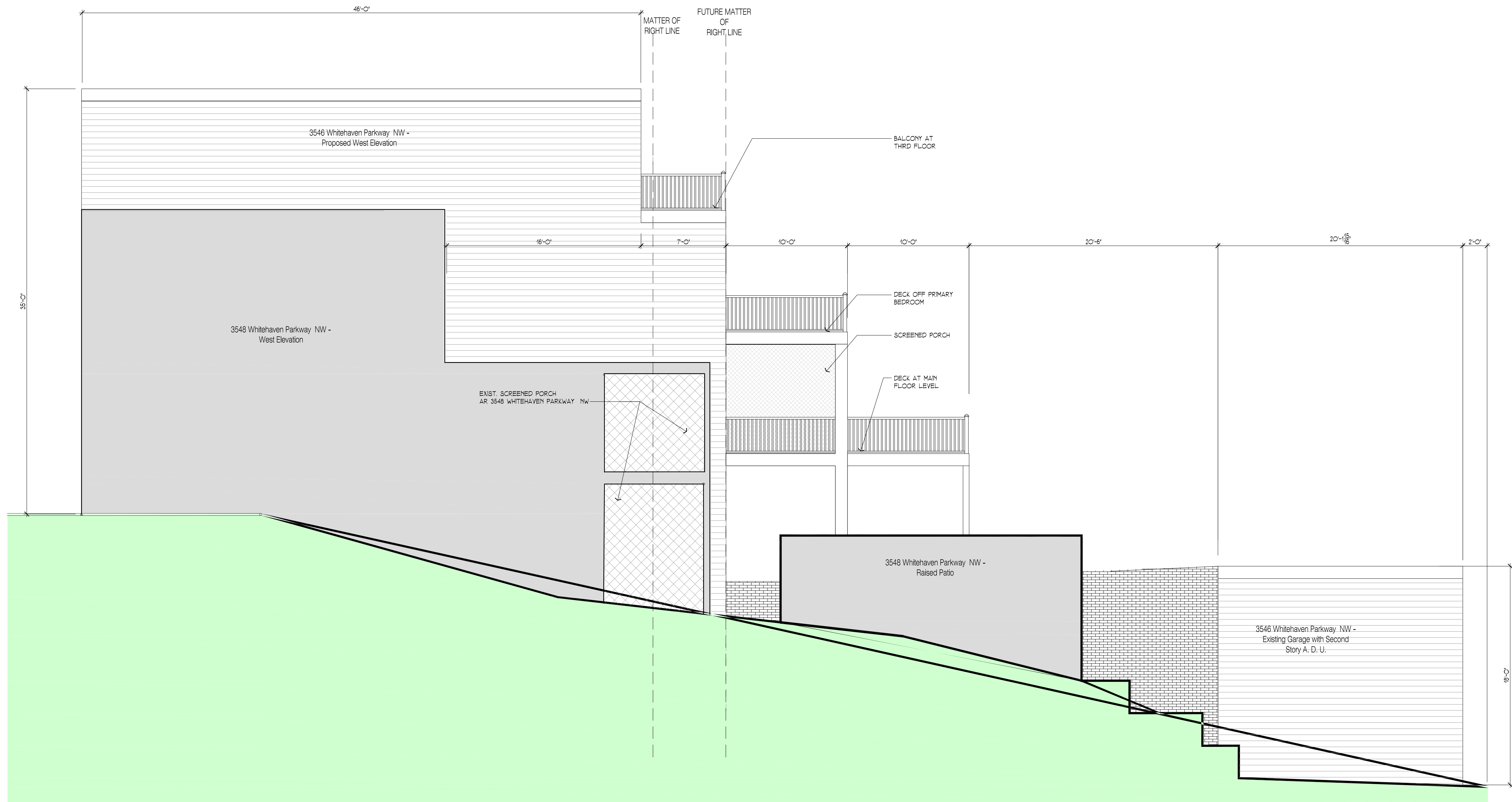
DATE: 11 September 2025

A004



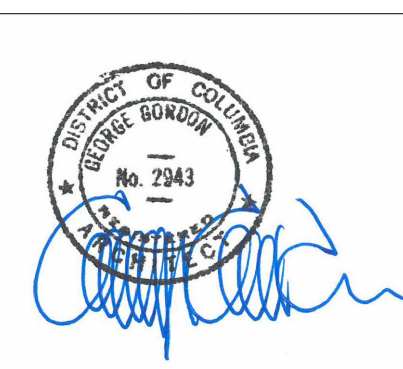
I AM RESPONSIBLE FOR DETERMINING THAT THE ARCHITECTURAL DESIGNS INCLUDED IN THIS APPLICATION ARE IN COMPLIANCE WITH ALL LAWS AND REGULATIONS OF THE DISTRICT OF COLUMBIA. I HAVE PERSONALLY PREPARED, OR DIRECTLY SUPERVISED THE DEVELOPMENT OF, THE ARCHITECTURAL DESIGNS INCLUDED IN THIS APPLICATION.





1  
A003 SITE SECTION  
WEST ELEVATION  
SCALE: 1/4" = 1'-0"

I AM RESPONSIBLE FOR DETERMINING THAT THE ARCHITECTURAL DESIGNS INCLUDED IN THIS APPLICATION ARE IN COMPLIANCE WITH ALL LAWS AND REGULATIONS OF THE DISTRICT OF COLUMBIA. I HAVE PERSONALLY PREPARED, OR DIRECTLY SUPERVISED THE DEVELOPMENT OF, THE ARCHITECTURAL DESIGNS INCLUDED IN THIS APPLICATION.



DCRA APPROVAL BLOCK

**GORDON**  
**architects**  
A Professional Corporation

TELEPHONE: 202.333.9270  
www.gordonarchitects.com

THIS DRAWING, THE DESIGNS INDICATED, THE FORMAT AND THE ARRANGEMENTS ARE THE PROPERTY OF GORDON ARCHITECTS AND PROTECTED BY COPYRIGHT LAWS

## Residential Addition & Remodeling

3546 Whitehaven Parkway NW  
Washington, DC 20007

REVIEWS / REVISIONS		
NO.	DESCRIPTION	DATE
1	BZA Filing	11 Sept. 2025

## East Elevation Site Section

SCALE: AS NOTED

PROJECT NUMBER: 2508

DATE: 11 September 2025

# A004