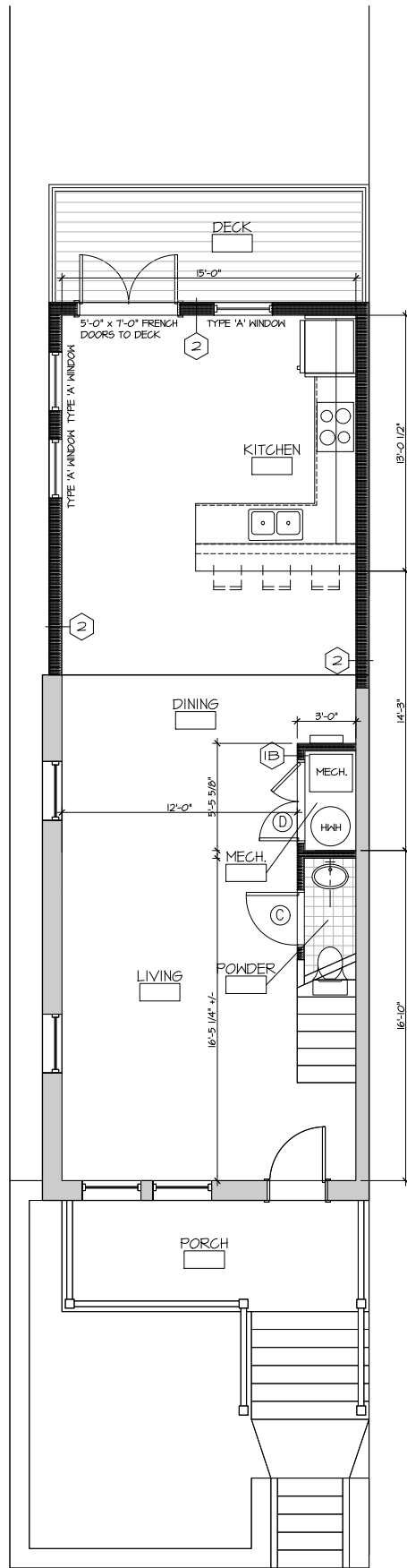


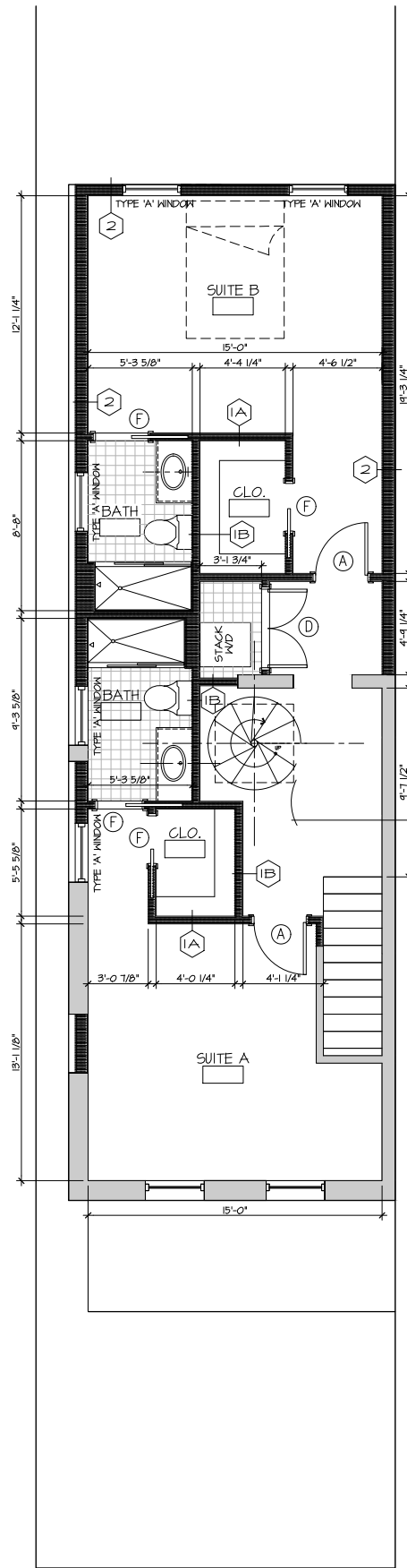
LOWER LEVEL FLOOR PLAN

SCALE: NOT TO SCALE



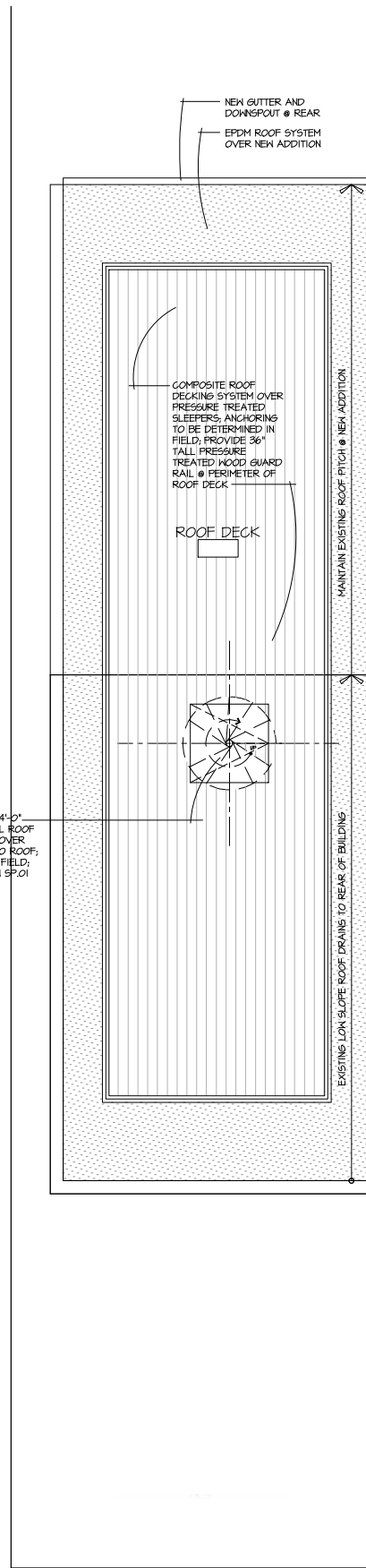
FIRST FLOOR PLAN

SCALE: NOT TO SCALE



SECOND FLOOR PLAN

SCALE: NOT TO SCALE



ROOF PLAN

SCALE: NOT TO SCALE



"I HEREBY CERTIFY THAT THESE DOCUMENTS WERE PREPARED OR APPROVED BY ME, AND THAT I AM A DULY LICENSED PROFESSIONAL ENGINEER UNDER THE LAWS OF THE DISTRICT OF COLUMBIA. LICENSE NO. 11037 EXPIRATION DATE: 1/30/2022."

### WALL TYPES:

#### NON-RATED ASSEMBLIES:

- EXISTING MASONRY WALL
- 3-5/8" 20 GAUGE METAL STUDS @16" O.C. 5/8" GYP. BD. typ BOTH SIDES
- SOUND ATTENUATION INSULATION MIN. R-20
- 3-5/8" 20 GAUGE METAL STUDS @16" O.C. 5/8" GYP. BD. typ BOTH SIDES
- 3/4" EXTERIOR GRADE PLYWOOD SHEATHING SOUND ATTENUATION INSULATION MIN. R-20 6" 20 GAUGE METAL STUDS @16" O.C. 5/8" GYP. BD. - INTERIOR FACE
- 2-1/2" INSULATED SHEATHING PANEL R-12 8" CMU BLOCK WALL 7/8" FURRING STRIPS @24" O.C. 5/8" GYP. BD. - INTERIOR FACE

### LIFE SAFETY:

#### EMERGENCY LIGHTING

- DOUBLE HEAD BATTERY UNIT SEE MEP DRAWINGS
- DOUBLE HEAD BATTERY POWERED EXIT SEE MEP DRAWINGS
- DOUBLE HEAD BATTERY POWERED DIRECTIONAL EXIT SEE MEP DRAWINGS
- FIRE EXTINGUISHER: SEE GENERAL NOTES FOR FIRE EXTINGUISHER AND CABINET/ UNIT LOCATION.

#### NOTES:

- WOOD HATCH WALLS INDICATE NEW CONSTRUCTION
- LIGHT GRAY HATCH WALLS INDICATE EXIST. CONSTRUCTION
- SEE SITE PLAN FOR EXTERIOR WALKWAYS, PATIOS, FENCING AND DRIVEWAYS.

### NOTES:

- COORDINATE WITH ROOM FINISH SCHEDULE
- SEE INTERIOR ELEVATIONS AND SECTIONS FOR ANY ADDITIONAL CONSTRUCTION INFORMATION.
- PROVIDE FIRE RATED GYPSUM BOARD AS REQ'D. FOR FIRE RATED ASSEMBLIES, AS INDICATED ON THE PLANS.
- PROVIDE SOUND ATTENUATING BATT INSULATION IN ALL HOLLOW WALLS SEPARATING APT. UNITS AND ALL WALLS SEPARATING APT. UNITS FROM COMMON AREAS. PROVIDE MINIMUM STC AND IIC RATINGS OF 50-55. PROVIDE SOUND BATTS IN ALL NEW WALLS SURROUNDING BATHS & BEDROOMS
- ALL GYPSUM WALLS AND CEILINGS IN KITCHENS, BATHROOMS, POWDER ROOMS AND BASEMENTS SHALL BE MOISTURE RESISTANT TYPE
- ALL EMERGENCY AND EGRESS LIGHTING AND ACCESSORIES SHOWN ARE FOR BASIS-OF-DESIGN ONLY. REFER TO ELECTRICAL DRAWINGS FOR DETAILED LAYOUTS AND NOTES
- REFER TO DEMOLITION DRAWINGS FOR ALL DEMOLITION AND SALVAGE NOTATIONS AND EXTENT OF WORK IN EXISTING UNITS. ANY WORK SHOWN ON ENLARGED DEMO.

NO.	DATE	REVISIONS

**dc DESIGN GROUP**  
ARCHITECTURE . INTERIORS . PLANNING  
www.dcdesigngroup.net  
WASHINGTON, D.C. - MARYLAND - PENNSYLVANIA - FLORIDA

**dc**  
FLOOR PLANS  
RENOVATION AND ADDITION FOR:  
**1956 FENDALL STREET**  
1956 FENDALL STREET SE  
WASHINGTON D.C. 20020

Board of Zoning Adjustment  
District of Columbia  
CASE NO. 21236  
EXHIBIT NO. 30A