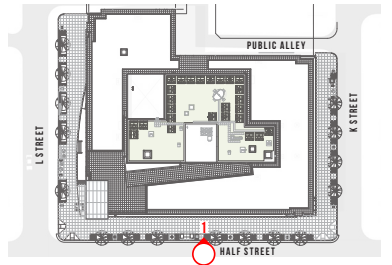


L STREET

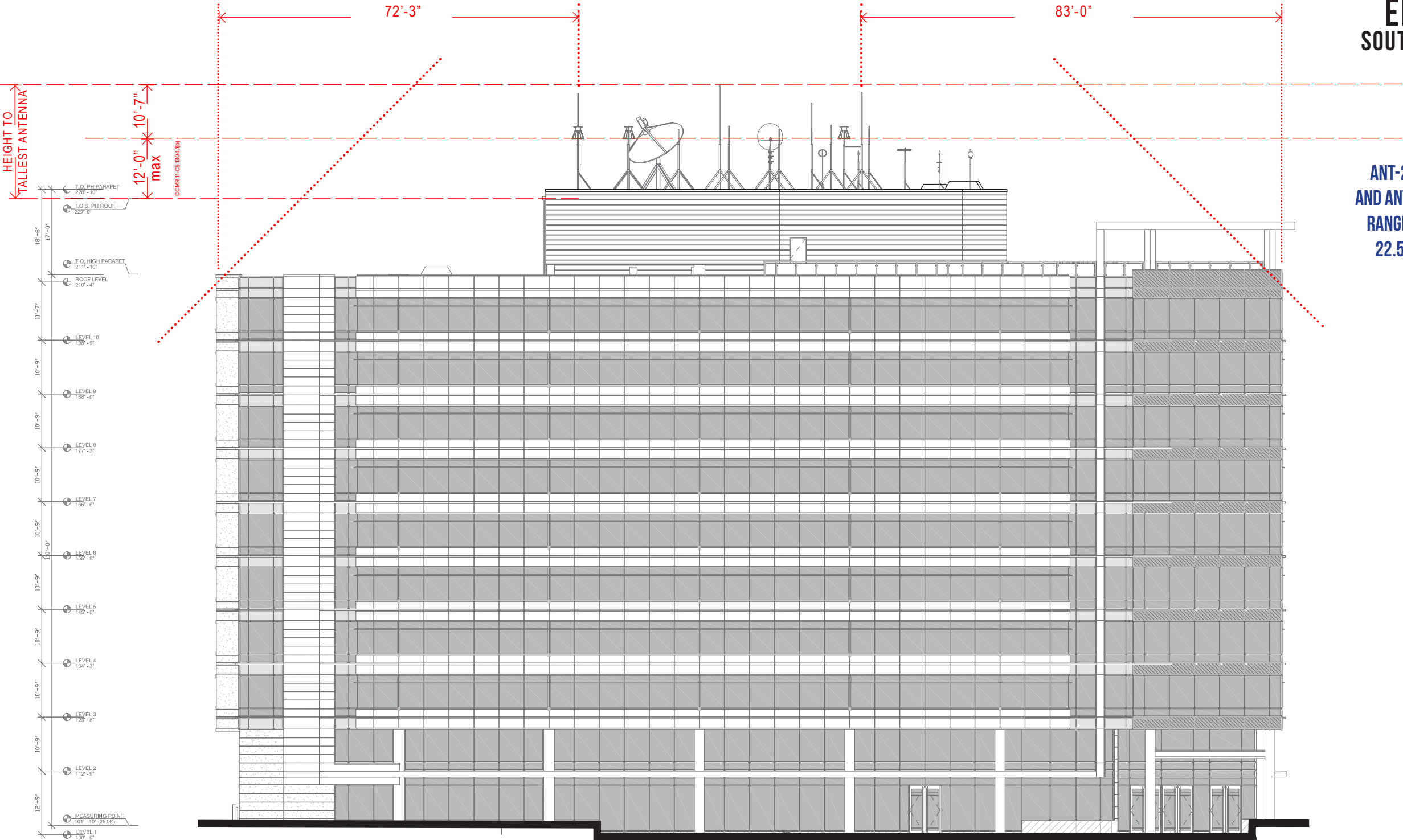
K STREET

1 EAST ELEVATION
3/64" = 1'-0"



ELEVATION
SOUTH - L STREET

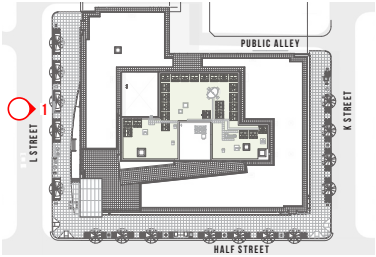
ANT-2 THROUGH ANT-25,
AND ANT-30 HAVE HEIGHTS
RANGING FROM 13.78' TO
22.58' ABOVE THE ROOF
STRUCTURES' ROOF



PUBLIC ALLEY

HALF STREET

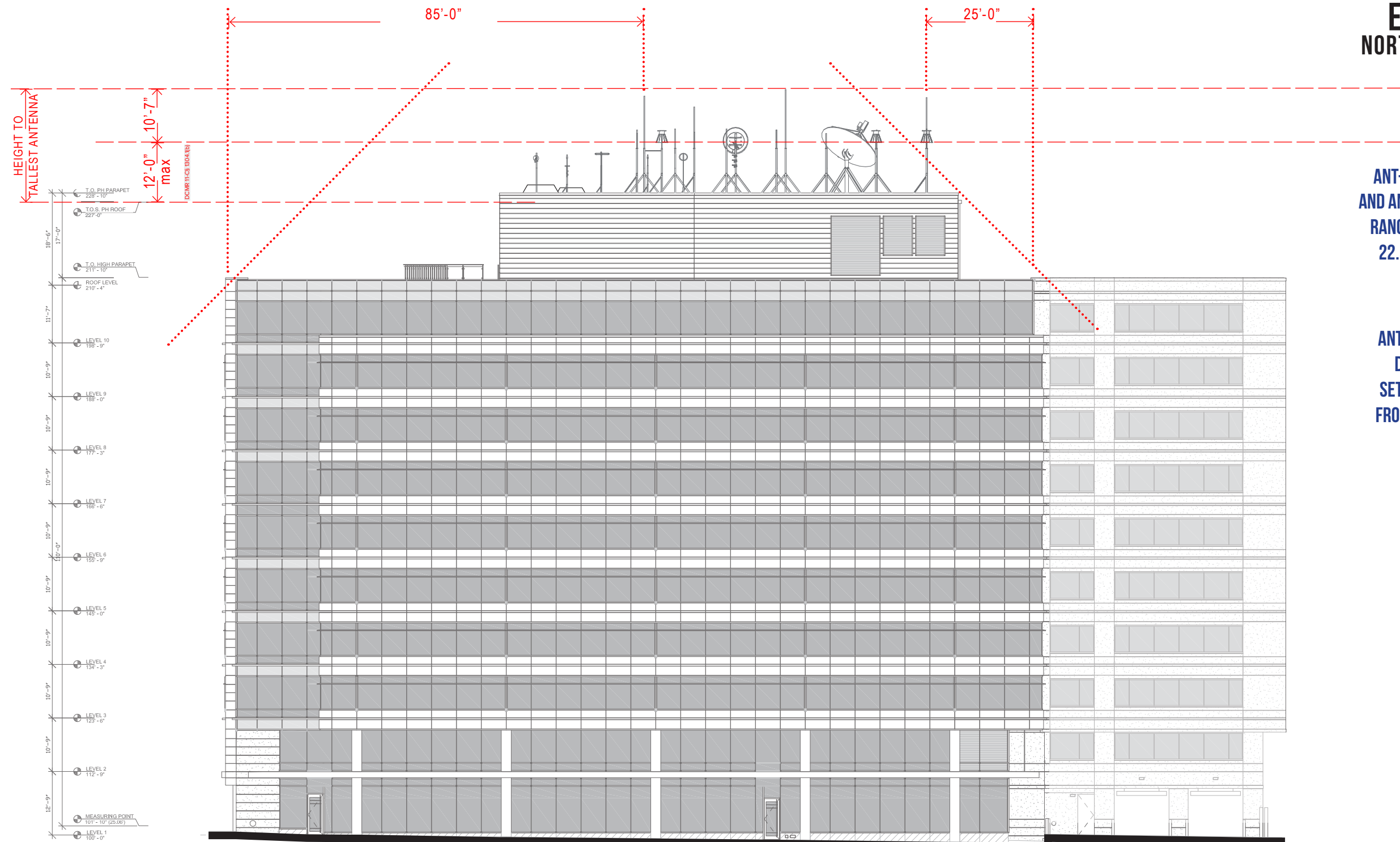
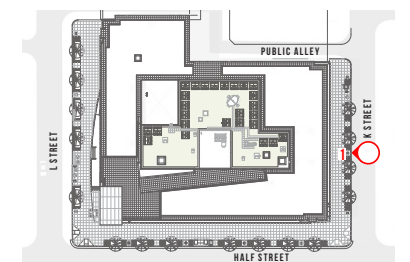
1 SOUTH ELEVATION
3/64" = 1'-0"



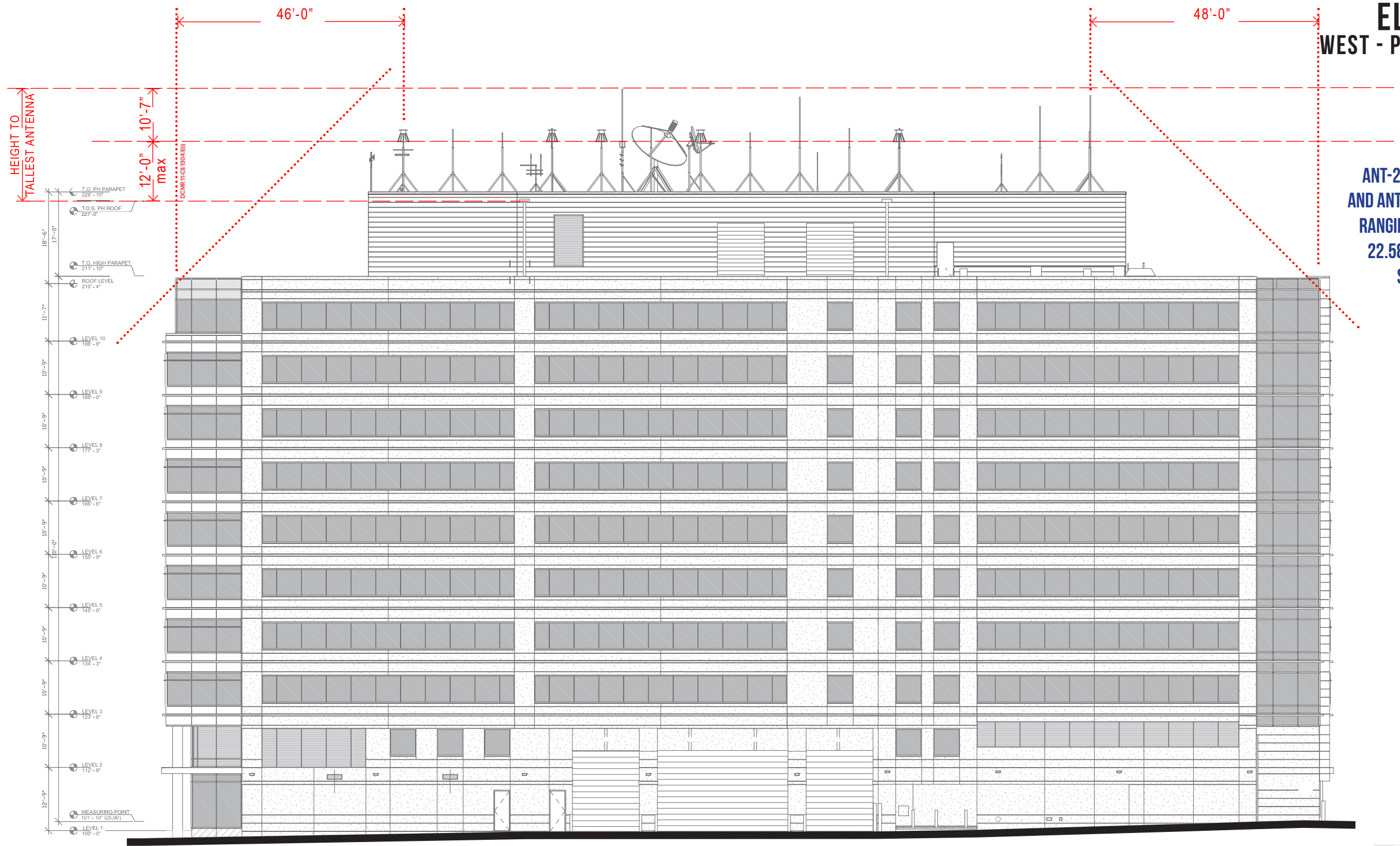
**ANT-2 THROUGH ANT-25,
AND ANT-30 HAVE HEIGHTS
RANGING FROM 13.78' TO
22.58' ABOVE THE ROOF
STRUCTURES' ROOF**

**ANT-9 THROUGH ANT-16
DO NOT MEET THE 1:1
SETBACK AS MEASURED
FROM THE EDGE OF ROOF**

PUBLIC ALLEY



1 NORTH ELEVATION
3/64" = 1'-0"



1 WEST ELEVATION
3/64" = 1'-0"

