

jowens02@comcast.net

From: Jie (Jessica) Qian <jq@alphatecpc.com>
Sent: Friday, September 20, 2024 11:22 AM
To: jowens02@comcast.net; Spiro P. Gianniotis
Cc: Shiri G. Shubbar; 20-DC2-001
Subject: RE: 3 Village Lane SW - BZA 21186
Attachments: FEMS Long Term Parking.pdf

Hi Jeff,

It appears the reviewer only reviewed the site drawings. Could you please forward her the attached drawings along with our response below?

“The project includes 20 long-term indoor bike parking spaces: 5 in OSSE, 5 in FEMS, and 10 in Logistics. Please refer to the attached floor plans for more details, and let us know if any further information is needed.”

Thanks,

Jie (Jessica) Qian, PE, LEED AP BD+C

Mechanical Engineer

ALPHATEC PC

1525 18th Street, N.W.
Washington D.C. 20036

jq@alphatecpc.com

Tel (202) 797-5000 x40

Fax (202) 797-5003

www.alphatecpc.com

Use of this U.S. Government (USG)-interest computer system constitutes consent for authorized monitoring at all times. This is a USG-interest computer system. This system and related equipment are intended for the communication, transmission, processing, and storage of official USG or other authorized information only. This USG-interest computer system is subject to monitoring at all times to ensure proper functioning of equipment and systems including security systems and devices, and to prevent, detect, and deter violations of statutes and security regulations and other unauthorized use of the system. Communications using, or data stored on, this system are not private, are subject to routine monitoring, interception, and search, and may be disclosed or used for any authorized purpose. If monitoring of this USG-interest computer system reveals possible evidence of violation of criminal statutes, this evidence and any other related information, including identification information about the user, may be provided to law enforcement officials. If monitoring of this USG-interest computer systems reveals violations of security regulations or other unauthorized use that information and other related information, including identification information about the user, may be used appropriate administrative or disciplinary action. Use of this USG interest computer system constitutes consent to authorized monitoring at all times.

From: jowens02@comcast.net <jowens02@comcast.net>
Sent: Wednesday, September 18, 2024 4:01 PM
To: Spiro P. Gianniotis <spg@alphatecpc.com>; Jie (Jessica) Qian <jq@alphatecpc.com>
Subject: FW: 3 Village Lane SW - BZA 21186

Spiro/Jie, please see the email below and email the response to these questions.

Thanks for your help.

Jeffrey Owens | President

Owens Technologies, inc.

11121 Luxmanor Road | Rockville, MD 20852
[301.213.4845](tel:301.213.4845) tel | jowens02@comcast.net email



Please consider the environment before printing this e-mail

Board of Zoning Adjustment
District of Columbia
CASE NO.21186
EXHIBIT NO.66

From: Ernst, Jamee (DDOT) <Jamee.Ernst@dc.gov>

Sent: Wednesday, September 18, 2024 3:58 PM

To: jowens02@comcast.net

Subject: 3 Village Lane SW - BZA 21186

Good afternoon Jeffery,

I am the assigned DDOT reviewer for 3 Village Lane SW. I need some clarification on the bike parking to complete my report. Zoning requires 19 long term bicycle parking spaces. These must be located indoors in a secured bike room. Could you point this out on the submitted site plans? I saw some other racks, but they all appeared to be short term bike parking.

Thanks,

Jamee

Jamee Ernst

Transportation Planner, Project Planning Branch

Planning and Sustainability Division

250 M Street SE

Washington, DC 20003

Phone: 202-705-7859

Email: Jamee.Ernst@dc.gov






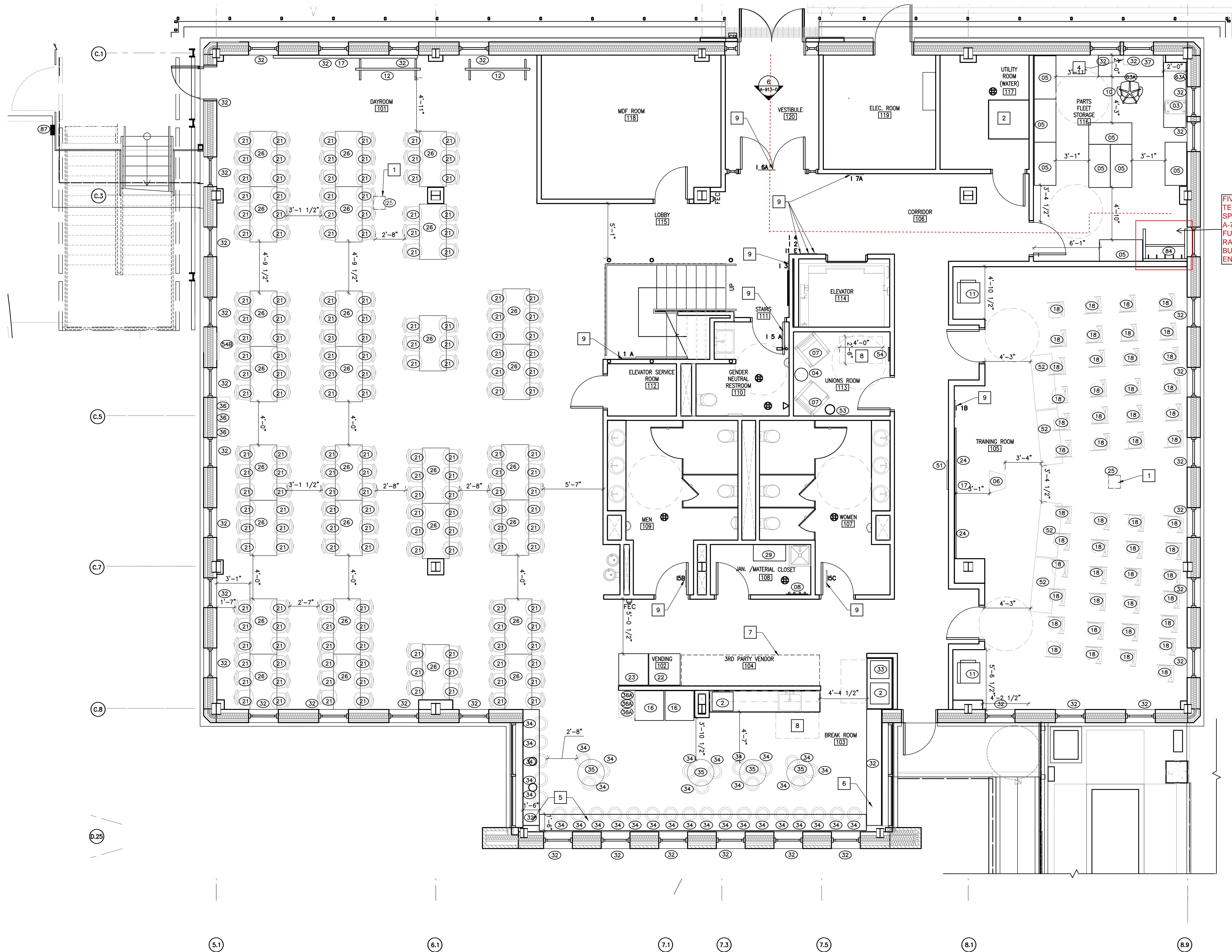
ITEM	DESCRIPTION	BASIS OF DESIGN	REMARKS	POWER KW	ELECTRICAL		QFCI/QFCI /QFCI
					V/PH CONNECTION (°)		
01	DESK	JUNIPER	48"W X 24" D, WITH POWER MODULE- FINISH WHITE OAK - SILVER HARDWARE				CFCI
02	MICROWAVE	PANASONIC, NE-1054F	COMMERCIAL MICROWAVE OVEN	1.2	120/1ø	P	CFCI
03	PEDESTAL	JUNIPER	BOX FILE MOBILE PEDESTAL FINISH SILVER				CFCI
04	SIDE TABLE	NATHAN JAMES	ROUND SIDE TABLE 15.5"DIA				CFCI
05	HEAVY DUTY PARTS SHELVING	NBF	EXTRA HEAVY DUTY SHELVING 48"W X 24"D X 72"H WITH 4 SHELVES, WOOD DECK, GRAY				CFCI
06	LECTERN	AVFI	LEX17 FINISH SHARK GRAY				CFCI
07	SINGLE SEATER	KIMBALL, BOYD	32"H X 28 1/2"W X 30"D, SINGLE SEATER LOUNGE WITH ARMS. SILVERTEX BASIL				CFCI
08	MOP HOLDER	ULINE	STANDARD MOP/BROOM HOLDER - STAINLESS STEEL				CFCI
09	CROWD CONTROL SIGN WITH BRACKET	PRIME DESIGNER SERIES	7"x14" VISIONTRON-SB- SMOOTH BLACK FINISH				CFCI
10	SWIVEL OFFICE CHAIR	KIMBALL, JOYA TASK CHAIR	K56TMBU -BLACK MESH BACK, UPHOLSTERED SEAT SEDONA, 2 ARM, BLACK BASE WITH ADJUSTABLE HEIGHT.				CFCI
11	FREESTANDING FAX/COPIER	XEROX VERSALINK B7035	COPY/PRINT MACHINE	1.2	120/1ø	P	CFCI
12	WHITE BOARD -MOVABLE	GLOBAL INDUSTRIAL	MOBILE REVERSIBLE WHITEBOARD WITH SILVER FRAME, 72"W X 48"H				CFCI
13	TV SCREEN	SAMSUNG	QN85A 75"	0.1	120/1ø	P	CFCI
14	CONFERENCE TABLE	KIMBALL, DOCK MEETING	DATA COMPATIBLE, 120" SURFACE COLOR CINDER LINEAR TFL LAMINATE				CFCI
15	CONFERENCE ROOM CHAIR	KIMBALL, HELIO TASK CHAIR	QK86TMBUB- A ADJUSTABLE HEIGHT,ALL BLACK TASK CHAIR, SEDONA UPHOLSTERED SEAT WITH 2 ARMS AND AND BLACK BASE				CFCI
16	REFRIGERATOR WITH FREEZER & ICEMAKER	FRIGIDAIRE	GRSS2352AF 33 INCH	1.2	120/1ø	P	CFCI
17	MOTORIZED PROJECTOR SCREEN	DA-LITE 88372LSI	CONTOUR ELECTROL (MATTE WHITE, 4:3, LVC, VPI, 120 INCH) CEILING MOUNT				CFCI
18	TRAINING ROOM SEATING- HEAVY DUTY	HERCULES	800LBS CAPACITY				CFCI
19	SHELVING	GLOBAL INDUSTRIES	NEXEL , 5 TIER, WIRE SHELVING STARTER UNIT, 72"W X 14"D X 86"H				CFCI
20	RETRACTABLE BELT STANCHIONS	VISIONTRON VALUE SERIES	RETRACTA-BELT POSTS 40" HEIGHT, 10' BELT LENGTH- BELT COLOR ORANGE				CFCI
21	CHAIR - HEAVY DUTY	HERCULES	1000 LB CAPACITY, 25"x24"				CFCI
22	VENDING MACHINE	EVOLUTION 48	46" X 36" SNACK MACHINE	1.3	120/1ø	P	CFCI
23	VENDING MACHINE	EVOLUTION 10	31" X 36" DRINK MACHINE	1.3	120/1ø	P	CFCI
24	MAGNETIC WHITE BOARD	QUARTET	6'-0" X 4'-0" WALL MOUNT				CFCI
25	PROJECTOR	OPTOMA, G1090HDR	FULL HD SHORT-THROW LASER DLP PROJECTOR				CFCI
26	BREAK TABLE	GLOBAL INDUSTRIES	INTERION? FOLDING WOOD TABLE, 60"W X 30"L, GRAY				CFCI
27	PRIVACY PARTITION	JUNIPER	ACOUSTIC DIVIDERS 19" SHADOW WHITE 23" LENGTH				CFCI
27B	PRIVACY PARTITION	JUNIPER	ACOUSTIC DIVIDERS 19" SHADOW WHITE 29" LENGTH				
28	PLATOON STATION	JUNIPER	48" X 30" THINK DESK WITH LAMINATE MOD PANELS - FINISH FIGURED MAHOGANY - POWER MODULE- STEEL FINISH WHITE				CFCI
29	SHELVING	GLOBAL INDUSTRIES	NEXEL CHROME, 4 TIER, WIRE SHELVING STARTER UNIT, 36"W X 18"D X 74"H				CFCI
30	MODULAR WORK STATION	JUNIPER	JOT DESK 30"x 72", DATA COMPATIBLE WORK STATION, COLOR WHITE OAK				CFCI
31	CREDENZA	JUNIPER	61.5" X 20" X 28" STEEL FINISH AND LAMINATE SHADOW ELM				CFCI
32	MANUAL SHADES	SWF CONTRACT	MANUAL LIGHT FILTERING CURTAINS SMOKE/CROSSHATCH 1 % OPENNESS - CLEAR ANODIZED ACCESSORY				CFCI
33	COFFEE MACHINE	NEWCO ECOCELLENZA TOUCH	20 " X 20.5" X 28" H	0.8	120/1ø	P	CFCI
34	BAR STOOL	NPS CAFETORIUM	500 LB CAPACITY 31" HEIGHT				CFCI
35	BREAK ROUND TABLE	GLOBAL INDUSTRIES	KFI 30" ROUND BAR HEIGHT TABLE, GRAY TABLE/SILVER BASE				CFCI
36	TRASH/RECYCLING RECEPTACLE	RECYCLE AWAY	KALEIDOSCOPIES- BLACK TIE SERIES, SQUARE BLACK (TRASH), SQUARE WHITE(RECYCLABLE), SQUARE GREY (PAPER)				CFCI
36A	TRASH/RECYCLING RECEPTACLE	RECYCLE AWAY	KALEIDOSCOPIES-BLACK TIE SERIES, XL RECTANGULAR BLACK (TRASH), XL RECTANGULAR WHITE (RECYCLABLE), 1 XL RECTANGULAR GREY (PAPER)				
37	DESKTOP MONITOR MOUNT-DUAL	JUNIPER	W 22"-35" X D 4"-22" X H 6.5"-20" SILVER				CFCI
38	RECEPTION STATION	JUNIPER	EDGE RECEPTION DESK WITH TRANSACTION PANEL FINISH FIGURED MAHOGANY				CFCI
39	FILE CABINET	JUNIPER	FILE LATERAL W 35.5" X D 19.75" X H 27.36" SILVER FINISH				CFCI
40	COMPACT REFRIGERATOR	GE 5.6 CU FT	34"x23"x23" IN BLACK	0.7	120/1ø	P	CFCI
41	OUTDOOR CHAIR	LANDSCAPE FORMS	CONCRETE AND ALUMINUM CHAIR - UHOP SLIM CONCRETE GRAY				CFCI
42	OUTDOOR TABLE	STREET FORMS	LONO TABLE - 33"D X 34"W X 15"H, ALABASTER				CFCI
43	EXTERIOR TRASH RECEPTACLE	GLOBAL INDUSTRIAL	ALUMINUM ROUND OPEN TOP TRASH CAN, 20 GALLON, SATIN CLEAR				CFCI
44	JOT POD	JUNIPER	4 DESKS POD- 72W X 30" D, HARDWIRED- FINISH WHITE OAK- DIVIDER FACING AND SIDES				CFCI
45	LOW BOX/FILE LATERAL	JUNIPER	W 35.5"-36" X D 19.75" X H 20" SILVER FINISH WITH CUSHION TOP COLOR LIME GREEN				CFCI
46	CREDENZA	JUNIPER	48" X 20" X 28" STEEL FINISH AND WHITE OAK LAMINATE				CFCI
47	PLANTER- SURFACE	VERADEK	WINDOW BOX 36 WHITE FINISH				CFCI
48	PLANTER	VERADEK	31" X 12.5" X 26"H BLACK				CFCI
50	ARTWORK	BIG WALL DECOR	32" X 32" STRIKING MOVEMENT ABSTRACT PAINTING BY BOB LOMBARDI				CFCI
51	ARTWORK	BIG WALL DECOR	32" X 48" VIBRANT FLORAL				CFCI
52	TRAINING ROOM TABLES	JUNIPER	24" X 60" TRAINING TABLE IN WHITE OAK SURFACE FINISH AND MODESTY PANEL WITH BLACK FINISH				CFCI
53	PLANTER ROUND	VERADEK	PURE SERIES 15" DIA. COLOR BLACK				CFCI
54	WALL CLOCK	HOMARY	COLOR BLACK				CFCI
54B	WALL CLOCK	ALL MODERN	CALLAN METAL WALL CLOCK				CFCI
55	EXECUTIVE L DESK	JUNIPER	JOT DESK 24"x 60"+ 24"x42 RETURN, DATA COMPATIBLE WORK STATION, COLOR WHITE OAK				CFCI
56	OUTDOOR BENCH	LANDSCAPE FORMS	SOCRATES - 95" LONG , WATERPROOFED IN GRAY, FREE STANDING				CFCI
57	SCREEN PARTITION	MUFFLE	MUFFLE FREE HANGING SCREEN 0.47" LARGE CIRCLE PATTERN FUZZY GREEN				CFCI
62	OUTDOOR SEATING	LANDSCAPE FORMS	EXTASI - 60"x60"x18"H CAST STONE GRAY FREE STANDING				CFCI
63A	HEAVY DUTY DESK	MPS	30"HX24"Dx72"L BENCHPRO KENNEDY SERIES STAINLESS STEEL SS FRAME WORKBENCH W. SQUARE EDGE- BLACK FINISH				CFCI
84	BIKE STORAGE	TEAL TRIANGLE	FREESTANDING G-BIKE 5 BIKE CAPACITY				CFCI
85	E-WASTE RECEPTACLE	MAXR_E-CYCLERS	OXFORD -22 GALLON- 26" W x 21" D x 50" H COLOR LIGHT GREY				CFCI
86	SURFACE-MOUNTED BABY CHANGING STATION	BOBRICK	KB300 GREY 01				CFCI
87	KNOX BOX	KNOX BOX 4400	7"Hx7"Wx50" SURFACE MOUNTED AT 66"MIN-84" MAX AFF				CFCI

1
A-701-0

FURNITURE SCHEDULE

PERMIT SUBMISSION

GENERAL NOTES	1- ALL KITCHEN APPLIANCES SHALL BE ENERGY STAR CERTIFIED	
#	Date	Change Description
FEMS FLEET MAINTENANCE FACILITY		
	BLUE PLAINS , D.C. VILLAGE LANE SW , WASHINGTON D.C. 20032 FOR THE GOVERNMENT OF THE DISTRICT OF COLUMBIA	
		
SUB-CONSULTANT:		SEAL: 
Dwg. Coord.:	Tech. Coord.:	Project NO.: SEE PLOT STAMP
FURNITURE SCHEDULE		A-701-O
PERMIT SUBMISSION		06/30/2023



GENERAL NOTES

1. ALL WINDOWS SHALL RECEIVE MANUAL SHADING DEVICE FOR SHADE.
2. ALL SHOWN FURNITURE ARE FREE STANDING U.O.N.
3. LAYOUT SHOWN IS FOR INFORMATION ONLY AND IS MODIFIABLE PER CLIENT'S DISCRETION AND ARISING NEEDS.
4. ALL WORK DESK SHALL BE EQUIPPED WITH POWER MODULE OR GROMMET TO ALLOW FOR ELECTRICAL WIRES CONNECTION.
5. ALL WORK DESK TO RECEIVE COMPATIBLE DUAL MONITOR DESK MOUNT.

KEY NOTES

- 1 CEILING MOUNT PROJECTOR
- 2 CONCRETE PAD,
- 3 NOT USED
- 4 ROLL-UP OVERHEAD OVER THE DOUBLE HUNG TRANSACTION WINDOW, REFER TO A-505-O
- 5 BUILT IN BAR TABLE
- 6 SNACK SHELVING, DELEGATED DESIGN BY MONUMENTAL MARKETS
- 7 FRESH FOOD VENDING MACHINES, DELEGATED DESIGN BY MONUMENTAL MARKETS
- 8 SPACE TO ACCOMMODATE WHEELCHAIR
- 9 SIGNAGE TYPE, REFER TO A-913-O AND A-914-O

INTERIOR SIGNAGE LEGEND

- | | |
|-----|---|
| 11 | ROOM SIGNAGE
WALL AND BUILDING LETTERING |
| 12 | BUILDING NAME AND FLOOR NAME
WALL AND BUILDING LETTERING |
| 13 | DIRECTIONAL SIGNAGE
WALL AND BUILDING LETTERING |
| 14 | FLOOR NUMBER
WALL AND BUILDING LETTERING |
| 15 | RESTROOM IDENTIFICATION
BOD VINYL LETTERING |
| 16A | OSSE LOGO
WALL AND BUILDING LETTERING |
| 17A | LEED FEATURES
WALL AND BUILDING LETTERING |

#	Date	Change Description

DGS BUILD

MAINTAIN

SUSTAIN

FEMS FLEET MAINTENANCE FACILITY
BLUE PLAINS - D.C. VILLAGE LANE SW, WASHINGTON D.C. 20032
FOR THE GOVERNMENT OF THE DISTRICT OF COLUMBIA

ALPHATEC PC

ENGINEERS
ARCHITECTS
PLANNERS

1626 18TH STREET N.W.
WASHINGTON, D.C. 20036
TEL 202/797-8000
FAX 202/797-9000

SUB-CONSULTANT:	SEAL:
Dwg. Coord.:	Tech. Coord.:
Project NO.:	SEE PLOT STAMP
FURNITURE PLANS - - FIRST FLOOR	A-702-O
PERMIT SUBMISSION	06/30/2023

PERMIT SUBMISSION

SCALE: 1/4" = 1'-0"

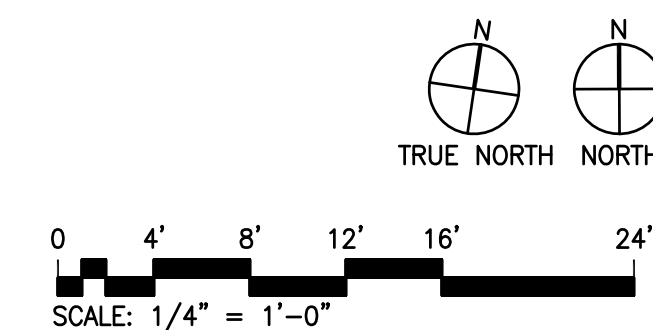
FURNITURE PLAN - OSSE FACILITY - FIRST FLOOR



LONG TERM BIKE PARKING



SHORT TERM BIKE PARKING



SCALE: $1/4" = 1'-0"$

ITEM	DESCRIPTION	BASIS OF DESIGN	REMARKS	ELECTRICAL			QFC/QFCI /QFCI
				POWER	V/PH	CONNECTION (C)	
01	DESK	JUNIPER	48"W X 24" D, WITH POWER MODULE- FINISH WHITE OAK				QFCI
02A	MICROWAVE	WHIRLPOOL	1.7 CU. FT. MICROWAVE HOOD COMBINATION WITH ELECTRONIC TOUCH CONTROLS 30" WIDTH	1.2	120/1ø	P	QFCI
02B	MICROWAVE	GE	PEB7227ANDD 2.2 CU. FT. BUILT-IN MICROWAVE BLACK	1.2	120/1ø	P	QFCI
03	PEDESTAL	JUNIPER	BOX FILE MOBILE PEDESTAL FINISH SILVER				QFCI
04	SIDE TABLE	NATHAN JAMES	SIDE TABLE 15"DIA APROX				QFCI
05	DURABLE SHELVING	GLOBAL INDUSTRIES	EXTRA HEAVY DUTY SHELVING 48"W X 24"D X 72"H WITH 4 SHELVES				QFCI
05A	DURABLE SHELVING	NBF	OPEN STEEL SHELVING 35"W X 24"D X 75"H WITH 4 SHELVES				QFCI
06	LECTERN	AVFI	LEX17 FINISH SHARK GRAY				QFCI
07	SINGLE SEATER	KIMBALL	BOYD SEATING				QFCI
08	MOP HOLDER	ULINE	STANDARD MOP/BROOM HOLDER - STAINLESS STEEL				QFCI
10	SWIVEL OFFICE CHAIR	KIMBALL, JOYA TASK CHAIR	K56TMBU -BLACK MESH BACK, UPHOLSTERED SEAT SEDONA, 2 ARM, BLACK BASE WITH ADJUSTABLE HEIGHT.				QFCI
11	FREESTANDING FAX/COPIER	XEROX VERSALINK B7035	COPY/PRINT MACHINE	1.2	120/1ø	P	QFCI
13	TV SCREEN	SAMSUNG	NEO QLED 75" 75QN85A	0.1	120/1ø	P	QFCI
13A	TV SCREEN	SAMSUNG	NEO QLED 85" 85QN85A	0.1	120/1ø	P	QFCI
14	CONFERENCE TABLE	KIMBALL, DOCK MEETING	DATA COMPATIBLE, 10' X 5' SURFACE COLOR MIDNIGHT RUN TFL LAMINATE				QFCI
15	CONFERENCE ROOM CHAIR	KIMBALL, HELIO	QK86TMBUB- A ADJUSTABLE HEIGHT,ALL BLACK TASK CHAIR, SEDONA UPHOLSTERED SEAT WITH 2 ARMS AND AND BLACK BASE				QFCI
16	REFRIGERATOR WITH ICE MAKER	FRIGIDAIRE	GRS52352AF 33 INCH. TO INCLUDE ICE MAKER AND WATER DISPENSER	1.2	120/1ø	P	QFCI
18A	TRAINING ROOM SEATING- HEAVY DUTY	NBF	FIGO ARMLESS STACK CHAIR WITH POLYPROPYLENE SEAT				QFCI
21A	CHAIR - HEAVY DUTY POLYPROPYLENE	NBF	300 LB CAPACITY, FACET MODERN CHAIR BLACK				QFCI
22	VENDING MACHINE	PENDING GOV. SELECTION		1.3	120/1ø	P	QFCI
23	VENDING MACHINE	PENDING GOV. SELECTION		1.3	120/1ø	P	QFCI
24	MAGNETIC WHITE BOARD	QUARTET	6'-0" X 4'-0" WALL MOUNT				QFCI
26	BREAK TABLE	GLOBAL INDUSTRIES	INTERION? FOLDING WOOD TABLE, 60"W X 30"L, GRAY				QFCI
29	SHELVING	GLOBAL INDUSTRIES	NEXEL CHROME, 4 TIER, WIRE SHELVING STARTER UNIT, 36"W X 18"D X 74"H				QFCI
29A	SHELVING	GLOBAL INDUSTRIES	NEXEL CHROME, 4 TIER, WIRE SHELVING STARTER UNIT, 54"W X 14"D X 74"H				QFCI
30	MODULAR WORK STATION	JUNIPER	JOT DESK 30"x 72", DATA COMPATIBLE WORK STATION, COLOR WHITE OAK				QFCI
31	CREDENZA	JUNIPER	61.5" X 20" X 28" STEEL FINISH AND LAMINATE GRAPHITE TWILL				QFCI
32	MANUAL SHADES	SWF CONTRACT	MANUAL LIGHT FILTERING CURTAINS C8204 FOG/CROSSHATCH				QFCI
33A	COFFEE MACHINE	BUNN	33200.0015 VPR BLACK 12 CUP POUROVER COFFEE BREWER WITH 1 UPPER AND 1 LOWER WARMER AND 2 GLASS DECANTERS - 120V	0.8	120/1ø	P	QFCI
34	BAR STOOL	NPS CAFETORIUM	500 LB CAPACITY 31" HEIGHT				QFCI
35	BREAK ROUND TABLE	GLOBAL INDUSTRIES	KFJ 30" ROUND BAR HEIGHT TABLE, GRAY TABLE/SILVER BASE				QFCI
36	TRASH/RECYCLING RECEPTACLE	RECYCLE AWAY	KALEIDOSCOPIES- BLACK TIE SERIES, SQUARE BLACK (TRASH), SQUARE WHITE(RECYCLABLE), SQUARE GREY (PAPER)				QFCI
37	DESKTOP MONITOR MOUNT-DUAL	JUNIPER	W 22"-35" X D 4"-22" X H 6.5"-20" SILVER				QFCI
38A	RECEPTION STATION	JUNIPER	EDGE RECEPTION DESK WITH TRANSACTION PANEL FINISH WHITE OAK				QFCI
39A	FILE CABINET	HIRSH	5 DRAWERS 42" W				QFCI
39B	FILE CABINET	HIRSH	4 DRAWERS 30" W				QFCI
40	COMPACT REFRIGERATOR	GE 5.6 CU FT	34"x23"x23" BLACK	0.7	120/1ø	P	QFCI
45	LOW BOX/FILE LATERAL	JUNIPER	W 35.5" X D 19.75" X H 20" WITH CUSHION TOP COLOR LIME GREEN				QFCI
48	PLANTER	VERADEK	MEDORI 31" BLACK				QFCI
52A	TRAINING ROOM TABLES	JUNIPER	24" X 72' TRAINING TABLE IN WHITE OAK SURFACE FINISH NO MODESTY PANEL				QFCI
53	PLANTER	VERADEK	15" ROUND BLACK				QFCI
54A	WALL CLOCK	UNION & SCALE	12" ROUND WALL CLOCK				QFCI
55A	L DESK	JUNIPER	JOT DESK 30"x 72"+ 24"x48" RETURN, DATA COMPATIBLE WORK STATION, COLOR WHITE OAK				QFCI
58	BOOKCASE	JUNIPER	W 31.5" X D 15.75" X H 72" DOORS: W 15.75" X D 0.75" X H 42" WHITE OAK FINISH				QFCI
60	EDGE 3-DRAWER WARDROBE	JUNIPER	W 33.22" X D 24.79" X H 70.82"				QFCI
63	OPEN SHELF HUTCH	JUNIPER	OVERALL: W 58.43" X D 38.15-38.58" X H 70.75"				QFCI
64	COAT RACK	SAFCO	420SSL				QFCI
65	DESK OVERHEAD STORAGE	JUNIPER	15" X 59"				QFCI
66	DESK OVERHEAD STORAGE	JUNIPER	15" X 71"				QFCI
							QFCI
68	WINDOW FILM	DECORATIVE FILM	SKWF-WM WHITE MATTE				QFCI
69	DISHWASHER	MAYTAG	24 IN. FINGERPRINT RESISTANT STAINLESS STEEL TOP CONTROL BUILT-IN TALL TUB DISHWASHER WITH ENERGY STAR, 50 DBA MDB7959SKZ	1.0	120/1ø	P	QFCI
70	STOVE	GE	30 IN. MODEL JS645FLDS	1.4	120/1ø	D	QFCI
71	LAUNDRY BIN	GLOBAL INDUSTRIES	DIRTY UNIFORM DROP-OFF BULK WIRE TRUCK, 40 CU FT, BLACK VINYL				QFCI
73	UNIFORM HEAVY DUTY Z RACK	H-8532	63"x70				QFCI
74	MIRROR	THE MIRROR COMPANY	6'x8" MODULAR WALL MOUNTED MIRROR				QFCI
75	EXECUTIVE COMBO UNIT	JUNIPER	EDGE CREDENZA COMBO UNIT				QFCI
76	BUNK BED	MERIT	BED XL WITH 4 ENDS AND 2 SPRING BASES - BUTLER HUMAN SERVICES FURNITURE				QFCI
77	MATTRESS	BUTLER HUMAN SERVICES	TWIN XL DUAL FIRM INNERSPRING MATTRESS WITH BLUE NYLON TICKING AND INVERTED SEAM, 39_X80_				QFCI
78	LOCKERS	PENCO PRODUCTS (W A HAMILTON CO INC.)	18"W X 21"D X 72"H SINGLE TIER INVINCIBLE II HEAVY DUTY LOCKER WITH 14GA DOOR, LOUVERS, HAT SHELF, HOOKS, NUMBER PLATE AND NAME CARD HOLDER. BASE: 4"H Z-BASE TO MATCH LOCKER FINISH. FINISH: TWO-TONE PATRIOT RED/JET BLACK TOP: CONTINUOUS SLOPE TOP 16GA. CAT NO. 6P179)				QFCI
79	BENCH	PENCO PRODUCTS	HARDWOOD LAMINATED BENCH SEAT WITH TUBULAR PEDESTALS TO MATCH LOCKER FINISH (JET BLACK). DIMENSIONS: PER DRAWING LENGTH X 9.5" X 18"H ADA TO BE 42"L X 20"D X 18"H WITH 4-PEDESTALS				QFCI
80	LATERAL FILE SYSTEM	GLOBAL INDUSTRIAL	MODULAR DRAWER CABINET 9 DRAWER BLACK				QFCI
81	SLEEPER/SOFA	DOMINICK SLEEPER	LEATHER GRAY SMOKE				QFCI
82	LADDER	WERNER	32 FT. ALUMINUM D-RUNG EXTENSION LADDER WITH 300 LBS. LOAD CAPACITY TYPE 1A DUTY RATING				QFCI
83	TOOL BOX	RIGID	32 in. W x 19 in. H x 18 in. L PORTABLE JOBSITE BOX BLACK 48" WIDE				QFCI
84	BICYCLE STORAGE	TEAL TRIANGLE	FREESTANDING Q-BIKE 5 BIKE CAPACITY				QFCI
85	E-WASTE CONTAINER	MAX-R	OXFORD E-CYCLERS STANDARD 22GAL. 26"W X 21"D X 50"H COLOR LIGHT GREY				QFCI
86	SURFACE-MOUNTED BABY CHANGING STATION	BOBRICK	KB300 GREY 01				QFCI
87	KNOX BOX	KNOX BOX 4400	7'Hx7"Wx50" SURFACE MOUNTED AT 66"MIN-84" MAX AFF				QFCI
							QFCI
PERMIT SUBMISSION							
1 A-701-F	FURNITURE SCHEDULE - FEMS FLEET MAINTENANCE FACILITY						

GENERAL NOTES

1. FURNITURE SCHEDULE ONLY, REFER TO Q-SHEETS FOR ALL EQUIPMENT SCHEDULES.

2. ALL KITCHEN APPLIANCES SHALL BE ENERGY STAR CERTIFIED.

#	Date	Change Description

DGS

BUILD

DEPARTMENT OF GENERAL SERVICES

MAINTAIN

SUSTAIN

FEMS FLEET MAINTENANCE FACILITY

BLUE PLAINS - D.C. VILLAGE LANE SW , WASHINGTON D.C. 20032

FOR THE GOVERNMENT OF THE DISTRICT OF COLUMBIA

ALPHATEC

PC

ENGINEERS ARCHITECTS PLANNERS

1626 18TH STREET N.W. WASHINGTON, D.C. 20036 TEL 202/797-8000 FAX 202/797-8003

SUB-CONSULTANT:

SEA:

Dwg. Coord.: Tech. Coord.: Project NO: SEE PLOT STAMP

FURNITURE SCHEDULE - FEMS FLEET MAINTENANCE FACILITY

PERMIT SUBMISSION

ARCHITECT

ARCHITECT

A-701-F

06/30/2023

I:\20-DC2-001\CAD DRAWINGS\CAD Dwgs\CD\02 - FEMS FLEET MAINTENANCE FACILITY\20-DC2-001-SA02-1.dwg, 7/5/2023 9:42:28 AM, cdm026

