

Board of Zoning Adjustment
Board of Zoning Adjustment
CEASED CONTROL
ID# BBN 0011928



JMT LLC
CONSULTING ENGINEERS
AND LAND SURVEYORS

BM 360/65-21101-00_MPD Day/55-21101-00_MPD Day-501_AR_2020.rvt
10/16/2024 10:58:54 AM

1

2

3

4

5

A

B

C

D

E

F

APPROVAL

DLR Group

© DLR Group

DGS BUILD
MAINTAIN
SUSTAIN

DOC Central Booking to 501
DEPARTMENT OF GENERAL SERVICES

501 New York Avenue NW
Washington, DC 20001

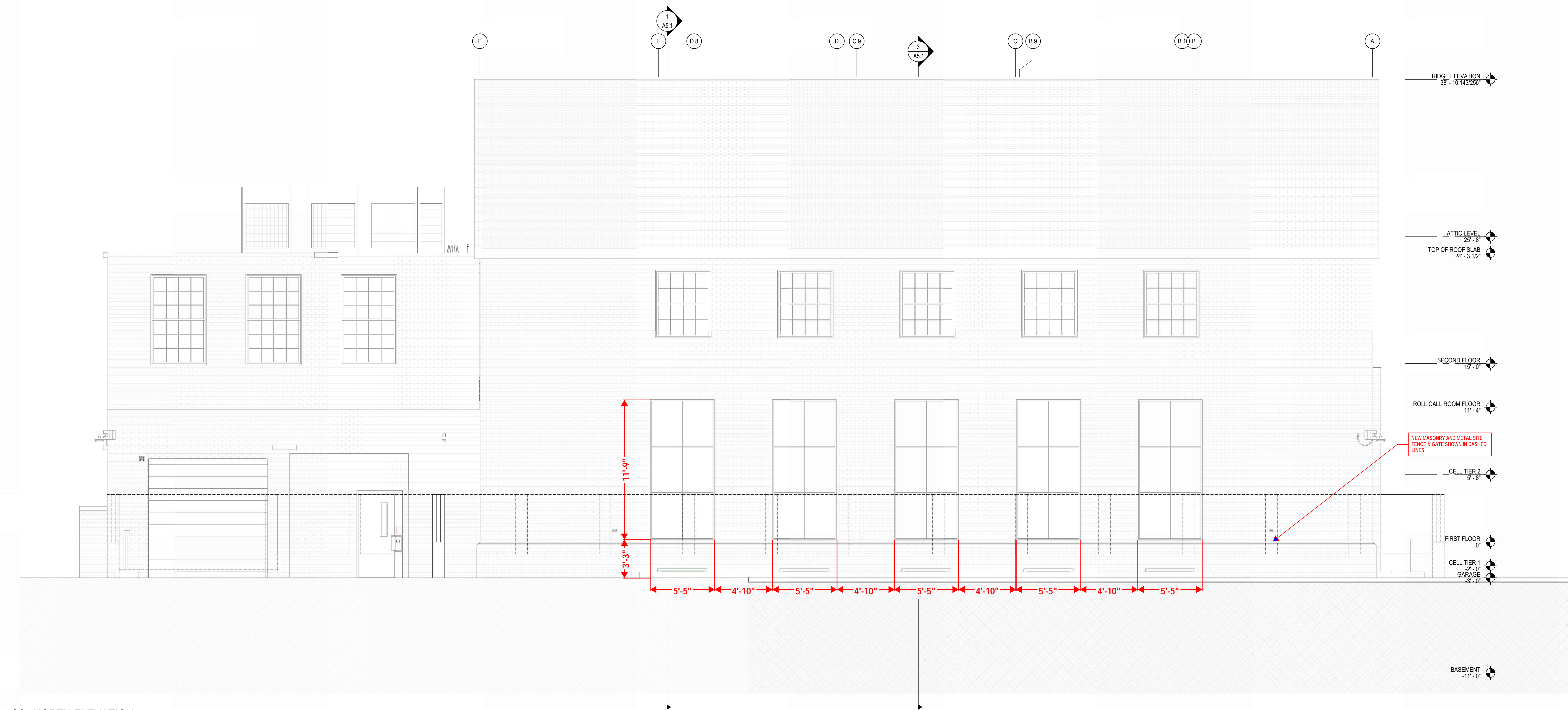
ISSUED FOR BID

REVISIONS

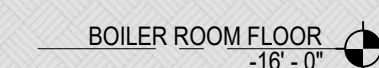
55-21101-00

EXTERIOR
ELEVATIONS

A4.1



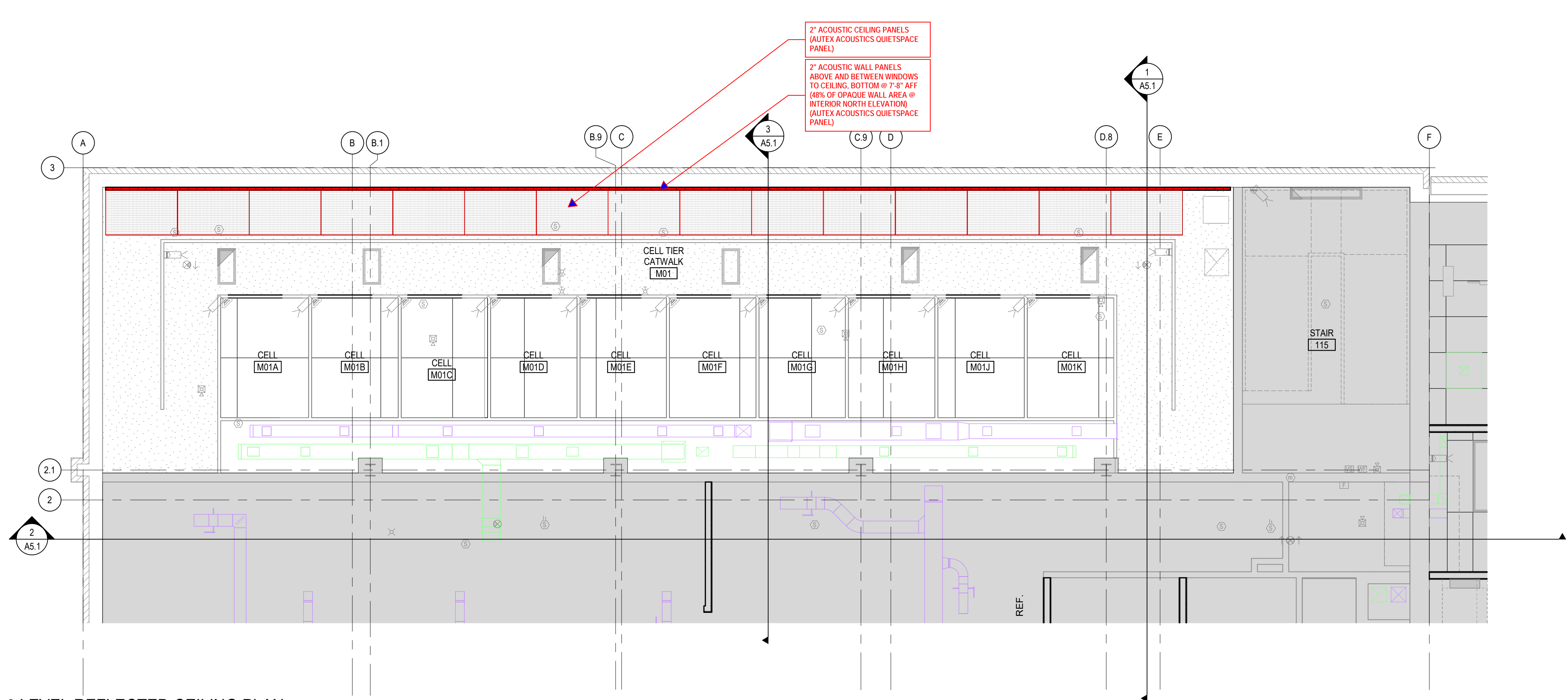
1 NORTH ELEVATION
A4.1 SCALE: 1/4\" = 1'-0"



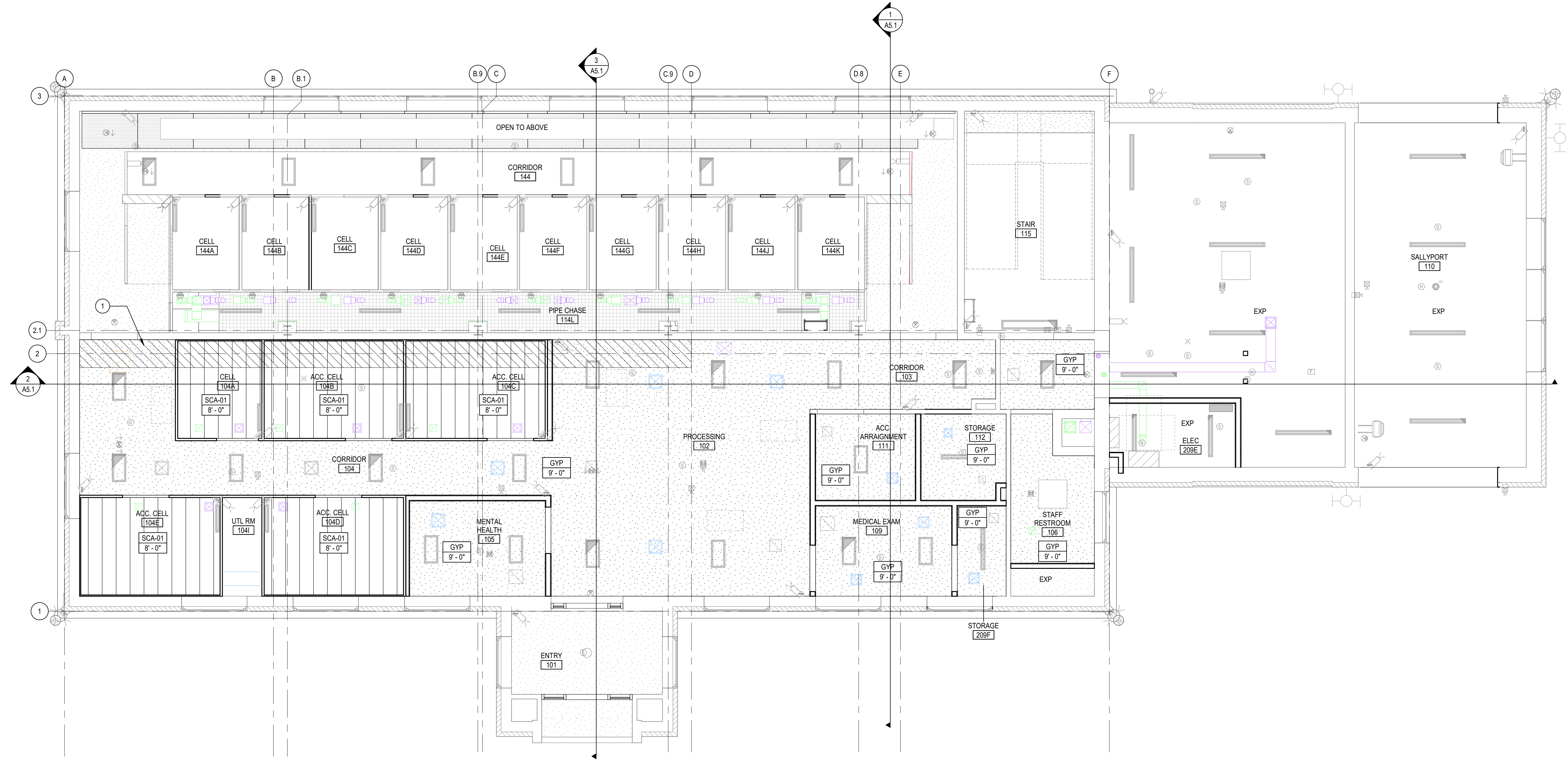
BM 360/655-21101-00_MPD Day/655-21101-00_MPD Day-501_AR_2020.rvt
10/14/2024 12:38:48 PM

1
2
3
4
5

2 TIER 2 LEVEL REFLECTED CEILING PLAN
A3.2 SCALE: 1/4" = 1'-0"



1 FIRST FLOOR REFLECTED CEILING PLAN
A3.2 SCALE: 1/4" = 1'-0"



REFLECTED CEILING PLAN
GENERAL NOTES

- A. REFLECTED CEILING PLAN GENERAL NOTES APPLY TO ALL REFLECTED CEILING PLAN SHEETS.
- B. ALL CEILING GRID/PANELS SHALL BE CENTERED IN EACH ROOM UNLESS NOTED OTHERWISE.
- C. CEILING HEIGHTS ARE NOTED ON THE REFLECTED CEILING PLANS ARE MEASURED FROM THE FINISH FLOOR OF THE ROOM.
- D. ALL ELECTRICAL FIXTURES, SPEAKERS, SMOKE AND THERMAL DETECTORS, MECHANICAL GRILLES, SPRINKLER HEADS, AND OTHER CEILING MOUNTED DEVICES, SHALL BE CENTERED BETWEEN CEILING GRIDS UNLESS NOTED OTHERWISE. SPRINKLER HEADS SHALL BE WITHIN A 3-INCH RADIUS CENTERED BETWEEN CEILING GRIDS.
- E. IN ACUSTICAL CEILING PANELS WITH SCORE IN THE CENTER, CENTER DEVICES REFERENCE IN NOTE D IN ONE HALF OF THE TILE. DO NOT LOCATE ON THE SCORE. FOR APC WITH MULTIPLE SCORED PATTERNS, COORDINATE LOCATION WITH THE ARCHITECT.
- F. PROVIDE SUSPENSION SYSTEM AROUND ELECTRICAL FIXTURES, MECHANICAL GRILLES, DIFFUSERS, AND OTHER CEILING MOUNTED DEVICES AT ACUSTICAL PANEL CEILINGS.
- G. ALL DIMENSIONS ON REFLECTED CEILING PLANS ARE ACTUAL AND ARE TO THE FOLLOWING UNLESS NOTED OTHERWISE:
 - a. FACE OF FINISHED WALL
 - b. FACE OF FINISHED BULKHEADS
 - c. CENTERLINE OF COLUMNS
 - d. CENTERLINE OF TEES
- H. IN AREAS WITH EXPOSED STRUCTURE CEILINGS, COORDINATE EXACT LOCATIONS OF MECHANICAL GRILLES, DIFFUSERS, DUCTWORK AND ELECTRICAL FIXTURES WITH EACH REPRESENTATIVE SUBCONTRACTOR.
- I. ALL WALLS EXTEND TO UNDERSIDE OF DECK EXCEPT THOSE SHOWN SHADED IN WHICH GYPSUM BOARD OR MASONRY EXTENDS MIN 4 INCHES ABOVE FINISHED CEILING. ALL METAL STUDS EXTEND TO UNDERSIDE OF FLOOR OR ROOF DECK.

REFERENCE KEYNOTES

REFLECTED CEILING PLAN LEGEND

- AREA NOT IN CONTRACT (NIC)
- EXP EXPOSED TO STRUCTURE, PAINTED
- 2x4 SUSPENDED LAY-IN ACOUSTIC CEILING
- 2x2 SUSPENDED LAY-IN ACOUSTIC CEILING
- GYPSUM BOARD CEILING, PAINTED
- SECURITY CEILING ASSEMBLY
- AIR SUPPLY DIFFUSER, SEE MECH
- SPRINKLER HEAD
- LIGHT FIXTURE, SEE ELECTRICAL

SHEET NOTES - RCP

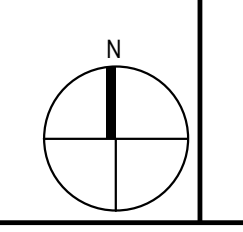
- 1 PLATFORM ABOVE CEILING FOR SMOKE CONTROL RISER ACCESS (DIAGONAL HATCH)
- 2 RCP SHEET NOTE 2
- 3 RCP SHEET NOTE 3



DOC Central Booking to 501
DEPARTMENT OF GENERAL SERVICES
501 New York Avenue NW
Washington, DC 20001

ISSUED FOR BID
2/15/2023
REVISIONS

55-21101-00
FIRST & CELL
TIER RCP



A3.2

APPROVAL

LLumar® iLLusions™ Decorative Window Film

Frost Series

Frost (NRM PS2)



SPECIFICATION SHEET



To view this product and the rest of the LLumar® iLLusions™ line, please visit LLumar.com/decofilmviewer

Specifications

Product Name	Frost (NRM PS2)
Product Series	Frost Series
Film Type	Polyester
Adhesive Type	Pressure-sensitive
Usage	Interior
Widths	72", 60", 48", 36"
Film Thickness (excludes liner)	.002"

Performance Data

	% Visible Light Transmittance	% Diffuse Visible Light Reflectance (exterior)	Privacy Film Rating
Clear Glass 1/8" (3mm) single pane	90	8	0
Frost (NRM PS2) 1/8" (3mm) single pane	73	25	7

For the most current data please go to LLumar.com/nar-deco-specs

Product Description

Create private spaces that feel open and airy with frost series decorative window films. Frosted and translucent finishes ensure privacy without sacrificing natural light. They are ideal for commercial interior glazing applications such as office partitions or to meet interior design goals at a fraction of the cost of etched glass.

Benefits and selection criteria

- The most popular film in the series provides modest privacy
- Softly diffuses light
- Can be custom cut for a decorative or patterned appearance
- Helps shield harmful ultraviolet rays

Installation and Warranty

LLumar iLLusions are professionally installed by a global network of authorized dealers in accordance with factory procedures. While installation is fast, with minimal disruption to tenants or contractors, the film is extremely durable and is backed by a limited manufacturer's warranty. Your dealer can provide you with technical information and warranty details.

Contact Information

Call 1-800-851-7781 or visit solutions.llumar.com/commercial to learn more.

Privacy Film Rating

This number, between 0 (clear) and 10 (opaque), represents the relative difficulty an observer has in identifying the nature and character of an object located on the opposite side of the window, with the observer and the object both located at least 2 feet from the pane upon which the product has been installed.

EASTMAN

LLumar.com

© 2014 Eastman Chemical Company. LLumar® and the LLumar® logo are trademarks of Eastman Chemical Company or one of its wholly owned subsidiaries. As used herein, © denotes registered trademark status in the U.S. only. Printed in U.S.A. (11/14)





Product overview

Quietspace® Panel is a high-performance acoustic treatment engineered to absorb a minimum of 85% of the sound energy it meets. Made from 100% polyester fiber, Quietspace Panel has a hard, compressed face and cushioned backing, available in 1" and 2" thicknesses.

Sustainable material

- Carbon neutral product
- Zero carbon manufacturing
- Recycled content
 - >60% recycled material
- Low VOC and CDPH compliant
 - <0.0035 mg/m³ (7 days)
- Zero waste manufacturing initiative
- Sustainable supply chain and anti-modern slavery

Environmental certifications

- EPD – compliant with ISO 14025 and EN 15804
- Declare – Red List free (third party verified)
- ISO 14001 Certified Environmental Management
- Health Product Declaration
- CDPH Standard



Certifying your green building

Autex Acoustics products meet criteria for WELL, LEED, Green Star, and BREEAM building rating systems, helping you achieve certification for your project. For support and guidance on available rating system points please visit www.autexglobal.com, or speak with your Autex Acoustics account manager.

Specification

(Wall/Ceiling) treatment shall be Quietspace® Panel made from thermally bonded polyester containing no less than 45% recycled material as manufactured by Autex www.autexglobal.com

Panel 4' x 8' (____) " nom depth, sound absorption: 1": Class B, NRC 0.85. 2": Class A, NRC 1.00. 1": ASTM E-84: Class A FS:0 - SD:10, 2": Class B FS:50 - SD:130, ISO 9705:

Classification: Group 1-S, AS ISO 9705 – 2003: Group 1, 1": BS EN 13501-1:2018: B - s2, d2, 2": EN13501-1:2007+A1:2009: B - s2, d2.



Product specifications

Product name	Quietspace® Panel
Composition	100% polyester fiber (PET)
Panel dimensions	4' x 8'
Tolerance	(+0.20") x (+0.39")

Thickness	1"	2"
Tolerance	(+/- 6%)	(+/- 6%)
Weight	6.88 oz/ft ²	11.80 oz/ft ²

Light reflectance

White Quietspace Panel is suitable for indoor use only and has a light reflectance value of 83 (measured in accordance with BS 8493:2008+A1:2010).

Installation

Install as per Autex Acoustics recommendations. Install instructions are included in each pack, or available on the website. In situations where product is being installed near fire protection systems (e.g. sprinklers or fire alarms) relevant building codes, standards and design rules must be adhered to.

Please consult the project engineer and relevant expert such as a fire protection engineer. If Quietspace Panel is to be specified for use other than as a wallcovering, please seek guidance from your account manager.

Product specifications

Fire ratings

Quietspace® Panel has been evaluated using the following test methods:

ISO 9705: 1993

Classification: Group 1-S

Smoke production rate:

<5.0m²/s

As required by NZBC C/VM2

AS ISO 9705 - 2003

Classification: Group 1

(SMOGR_{Arc}): <100m²/s²

Assessed using methodology AS ISO 9705:2003 in accordance with AS 5637:12015, as required by BCA Specification C110-4

FI 4871

FAR 4055

BS EN 13501-1:2018

(25 mm Quietspace® Panel)

Wall applications

Classification: B-s₂d₂

Tested using BS EN ISO 11925-2:2020 and BS EN 13823:2020 and classified in accordance with BS EN 13501-1:2018, as required by BS EN 15102:2007 + A1:2011.

EUI-21-000135-E-A

Ceiling applications

Classification: B-s₂d₂

Tested using BS EN ISO 11925-2:2020 and BS EN 13823:2020 and classified in accordance with BS EN 13501-1:2018, as required by BS EN 13964:2014.

EUI-21-000135-E-B

ASTM E84 - 14

(1" Quietspace® Panel)

Class A, FS:0 - SD:10

RJ3297

Water vapour sorption

ASTM C1104 / C1104M-13a

Test conditions: 49°C, 95%RH

Water vapor absorbed and

adsorped after 4 days:

0.4% by weight.

Pattern repeat

Non-woven. No pattern repeat but product has directional grain. Product may vary from samples and batch to batch due to fiber blending and lay-up, which is an inherent feature of this product.

Impact resistance

ISO 7892:1988

Hard body impact

There is no surface damage or penetration to Quietspace Panel when subjected to hard body impacts. A small indentation might be observed when subjected to an impact equivalent to the impact of a 0.5 kg object dropped from a 0.5 m height. When adhered to 10 mm plasterboard, the system can resist a 14 joule impact, and no further indentations are observed. This is equivalent to the impact of a 0.5 kg object dropped from a 3 m height.

Soft body impact

There is no surface damage or penetration to Quietspace Panel when subjected to soft body impacts. When adhered to 10 mm plasterboard, the system can resist a 120 joule impact. This is equivalent to the impact of a 50 kg object dropped from a 250 mm height.

Microbial resistance

ASTM G21-15

Growth rating: 0 (No growth)

Quietspace Panel does not promote the growth of molds and mildew.

Fabric care

Blot spills from fabric quickly. Wipe with a damp cloth. Avoid rubbing and excessive amounts of water as this will affect the finish. Use carpet or upholstery shampoo as directed. Blot with a clean dry cloth after each application of solution. Custom printed Quietspace Panel requires the services of a specialist cleaning company. Refer to the Quietspace Panel Care and Maintenance Guide for more information.

Service

For further information about Quietspace Panel or any other Autex Acoustics product, please contact your account manager or visit our website.



Acoustic performance

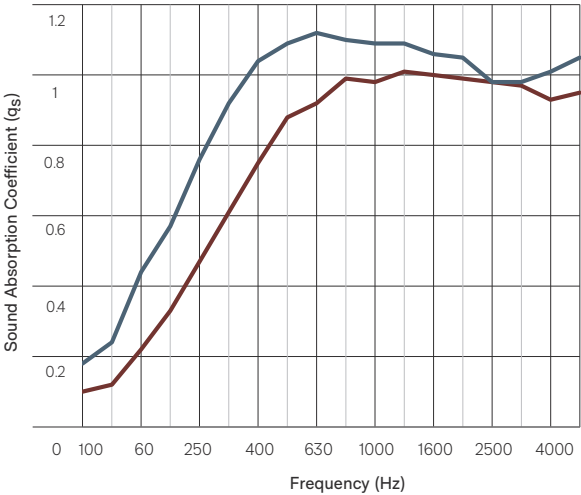
Quietspace Panel is specifically designed to reduce and control reverberated noise and echo in building interiors. Minimum Noise Reduction Coefficient 0.85

	Frequency (Hz)	125	250	500	1000	2000	4000	NRC
● 1"		0.15	0.45	0.85	1.00	1.00	0.95	0.85
● 2"		0.30	0.75	1.10	1.10	1.05	1.00	1.00

Table presents the practical sound absorption coefficients as according to ISO 11654. Graph presents third octave sound absorption coefficients (according to ISO 354 measurement of sound absorption in a reverberation room). The NRC rating is determined as the arithmetic average of the absorption coefficients measured by one-third octave bands centered on 250 Hz, 500 Hz, 1000 Hz and 2000 Hz and rounded to the nearest 0.05.

Absorption Coefficient according to ISO 354 University of Auckland Testing Service

Quietspace Panel 1" - test no. T0712-18
Quietspace Panel 2" - test no. T1228-8



● **New Zealand**
702-718 Rosebank Road,
Private Bag 19988
Avondale 1746, Auckland
T 0800 428 839
T +64 9 828 9179
www.autexacoustics.co.nz

● **Australia**
285 Swan Street,
Richmond, VIC 3121
T 1800 678 160
T +61 3 9450 6700
www.autexacoustics.com.au

● **United Kingdom**
Unit J4, Lowfields Way,
Lowfields Business Park,
Elland, West Yorkshire
HX5 9DA
T +44 0 142 241 8899
www.autexacoustics.co.uk

● **United States**
1630 Dan Kipper Drive,
Riverside, CA 92507
T +1 424 203 1813
www.autexacoustics.com

Autex is an ISO certified organisation encompassing Quality (ISO 9001), Environmental (ISO 14001), and Health and Safety (ISO 45001). Brand names and logos are registered or unregistered trademarks owned or used under license by Autex Industries Limited or other members of the Autex Group. © Copyright 2023 Autex Industries Ltd. All rights reserved. It is the user's responsibility to determine if the product and information presented in this document is suitable for the intended application by engaging a suitably qualified consultant. The information contained in this document is correct to the best of our knowledge at the date of its publication. To verify that this document is the most current publication please check our website or contact your Autex account manager.