

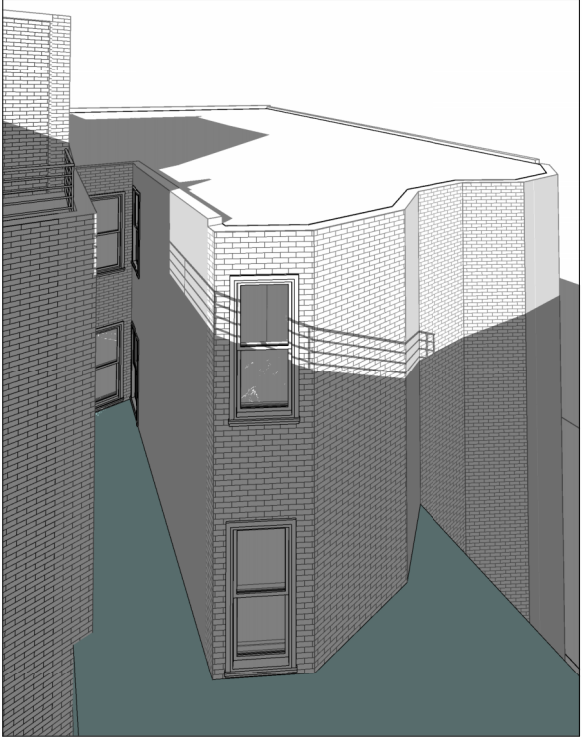
WINTER SOLSTICE - 12:00 PM

1641 R STREET NW

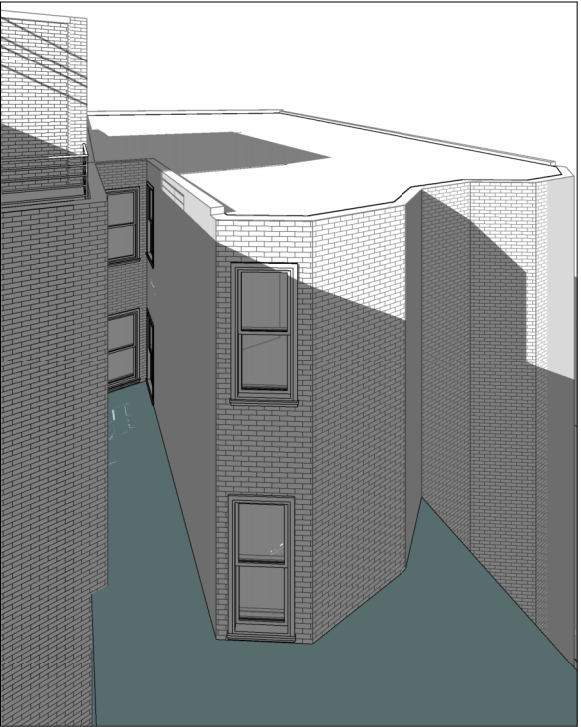
1635 R STREET NW

1709-1711 17TH STREET NW

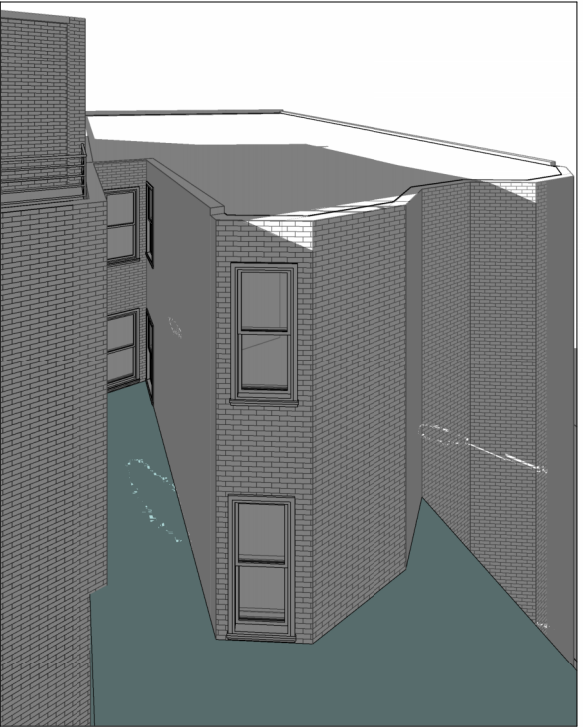
1709 17TH ST.  
PROP. ADDITION



WINTER SOLSTICE - 10:00 AM



WINTER SOLSTICE - 12:00 PM



WINTER SOLSTICE - 2:00 PM

RAYCON

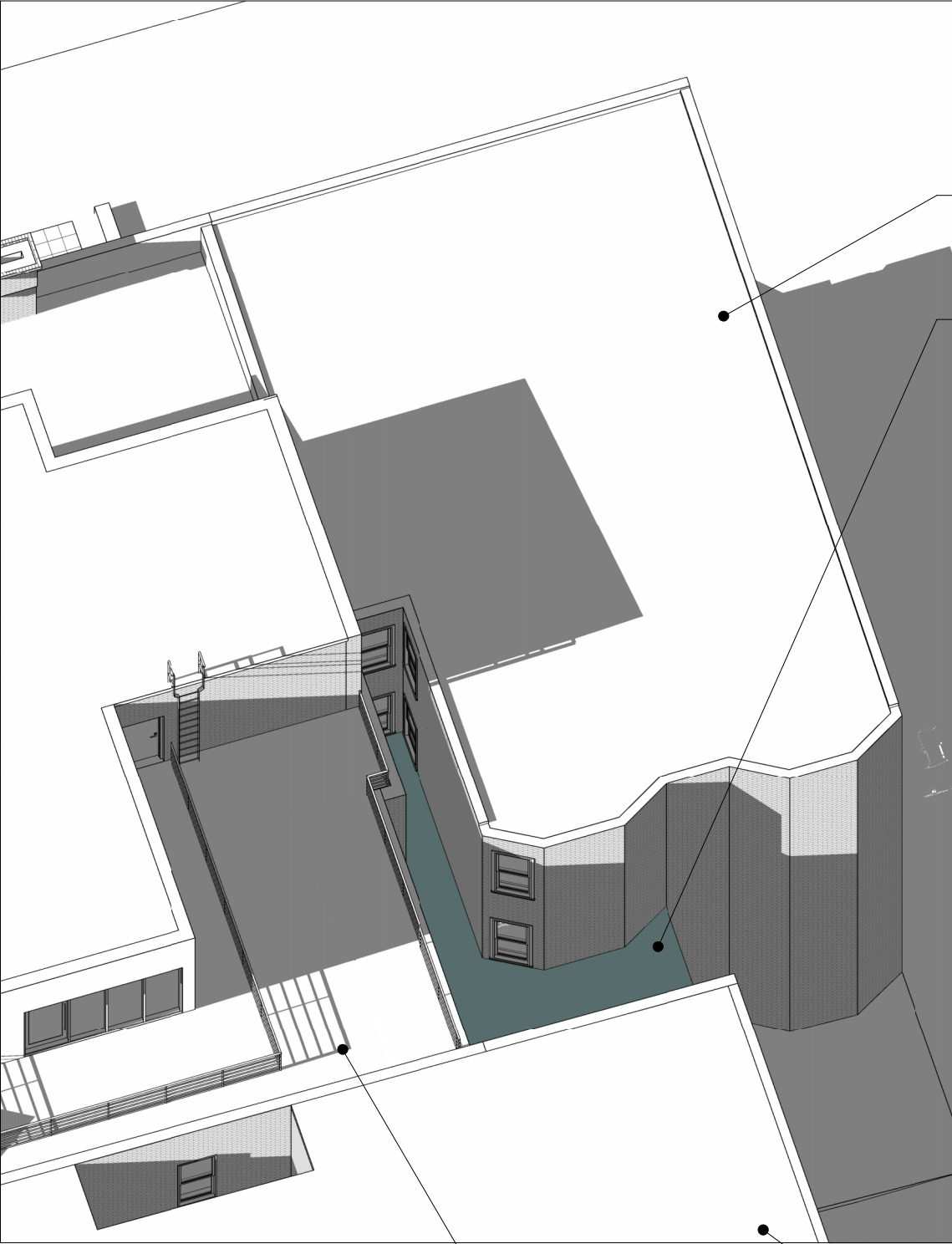
BZA APPROVED CONDITION - SHADOW STUDY AT WINTER SOLSTICE

06/28/24  
© 2024 - Bonstra | Haresign Architects

Board of Zoning Adjustment  
District of Columbia  
1641 R STREET NW

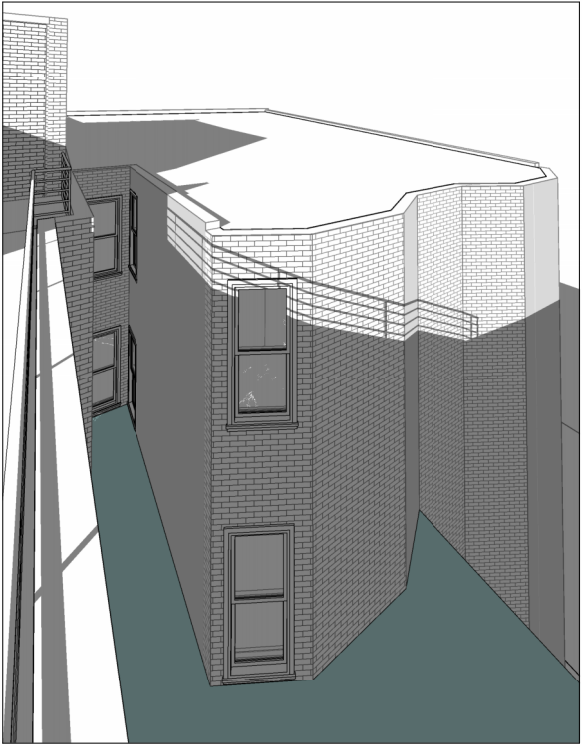
A03

Bonstra Haresign  
ARCHITECTS

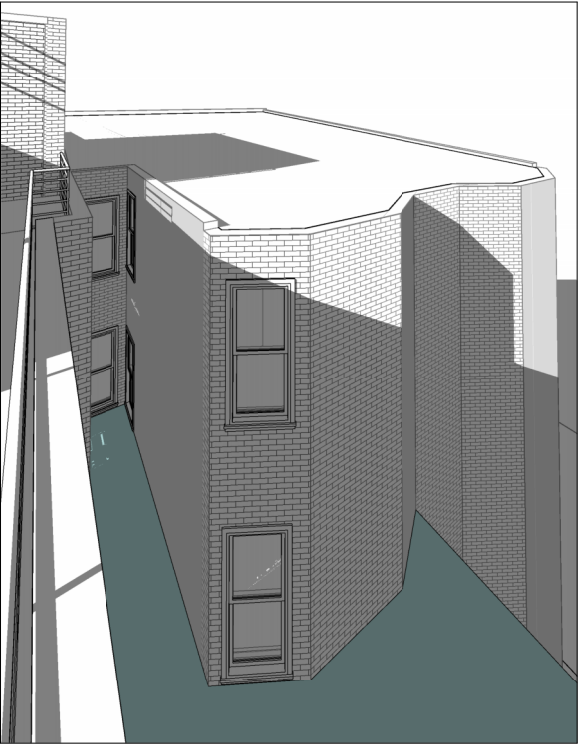


1709-1711 17TH STREET NW

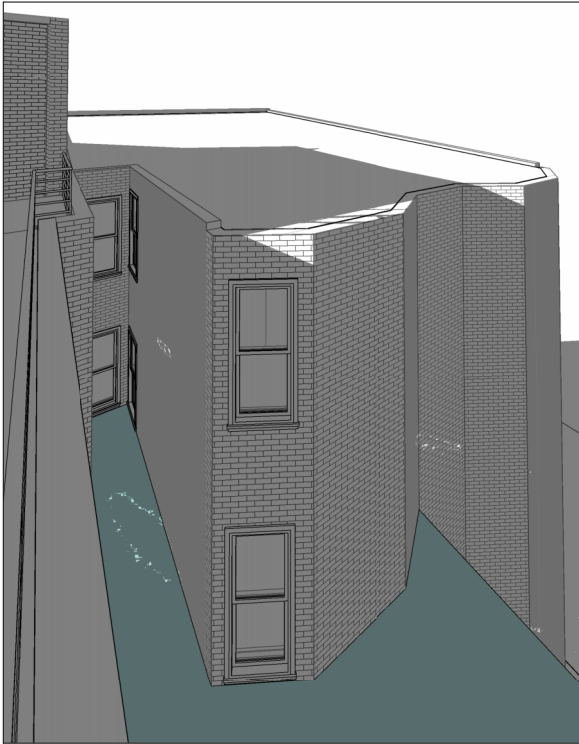
1709 17TH ST.  
PROP. ADDITION



WINTER SOLSTICE - 10:00 AM



WINTER SOLSTICE - 12:00 PM



WINTER SOLSTICE - 2:00 PM

WINTER SOLSTICE - 12:00 PM

1641 R STREET NW

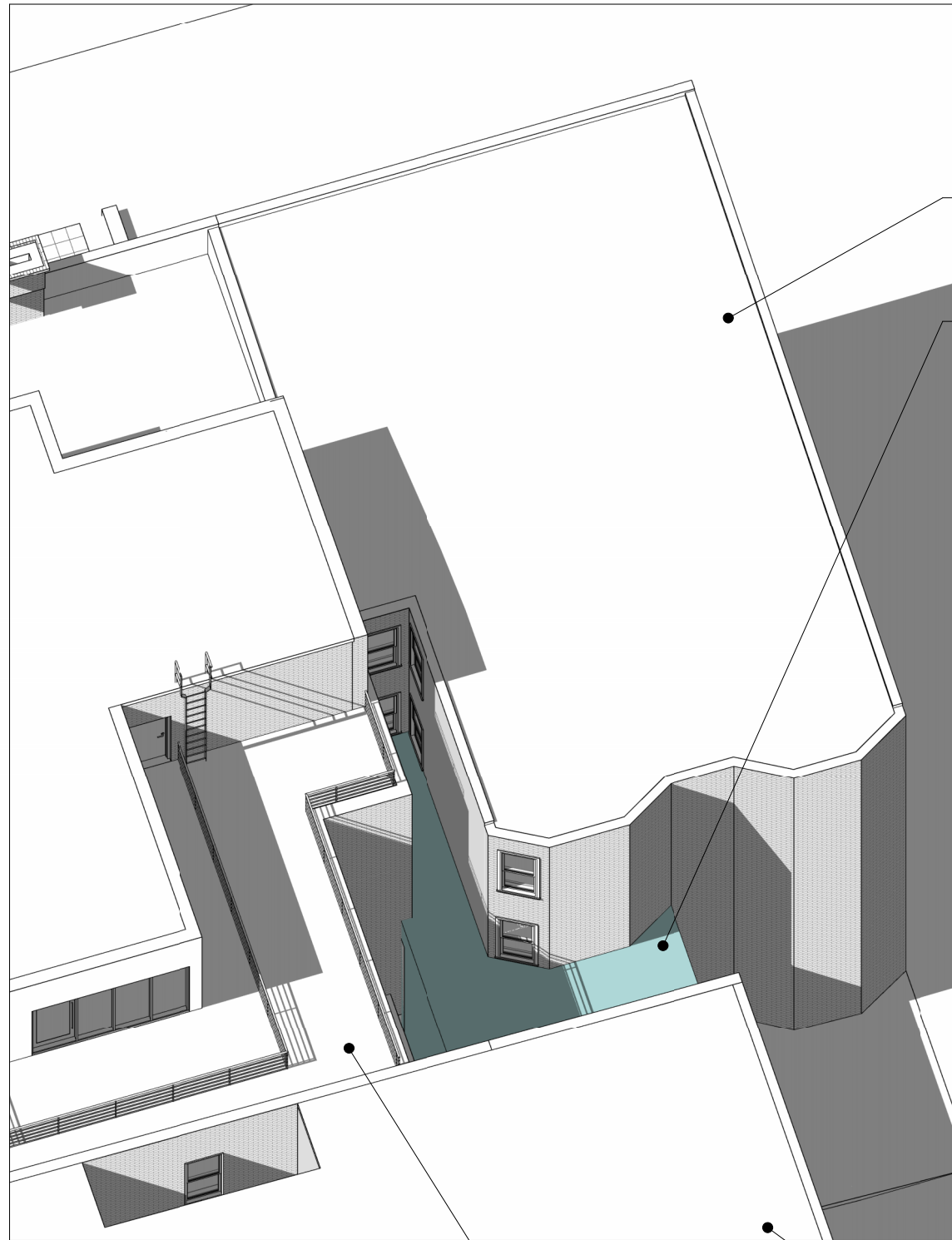
1635 R STREET NW

RAYCON

CURRENT AS BUILT CONDITION - SHADOW STUDY AT WINTER SOLSTICE

1641 R STREET NW





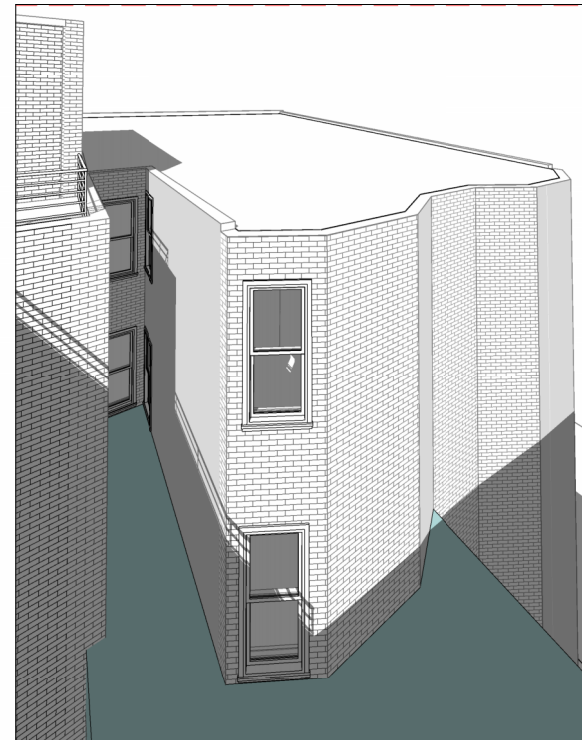
1709-1711 17TH STREET NW

1709 17TH ST.  
PROP. ADDITION

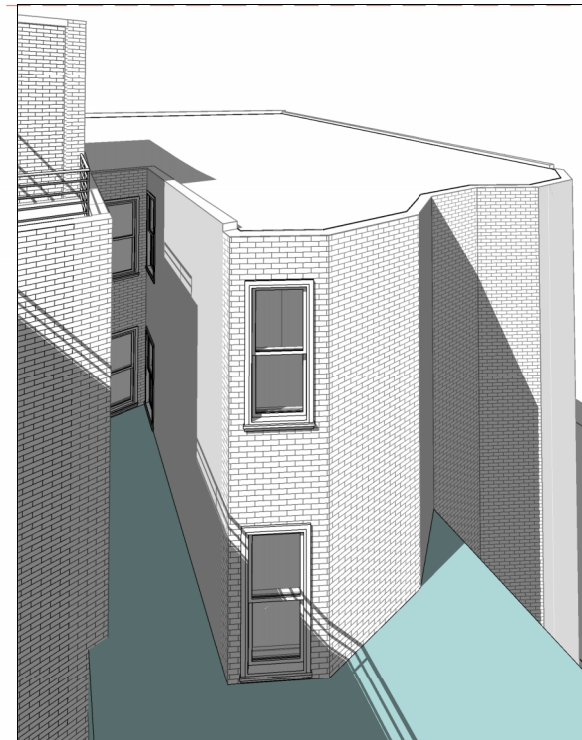
FALL EQUINOX - 12:00 PM

1641 R STREET NW

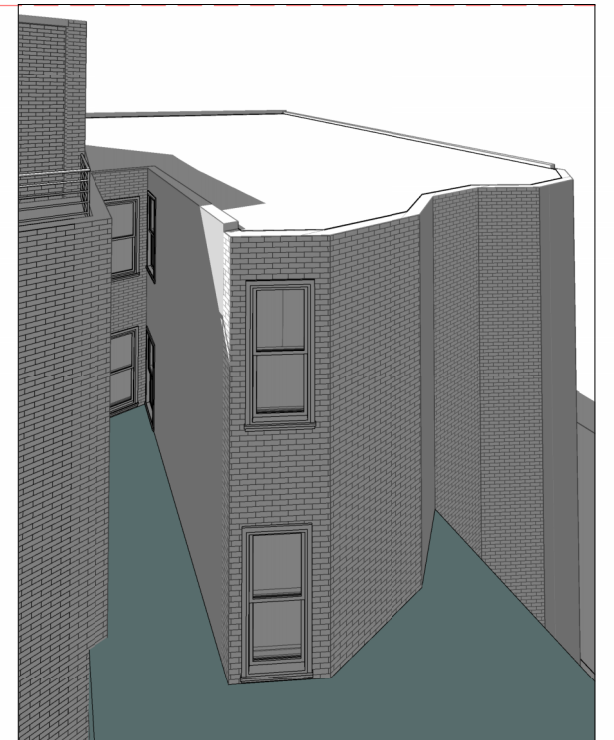
1635 R STREET NW



FALL EQUINOX - 10:00 AM



FALL EQUINOX - 12:00 PM



FALL EQUINOX - 2:00 PM

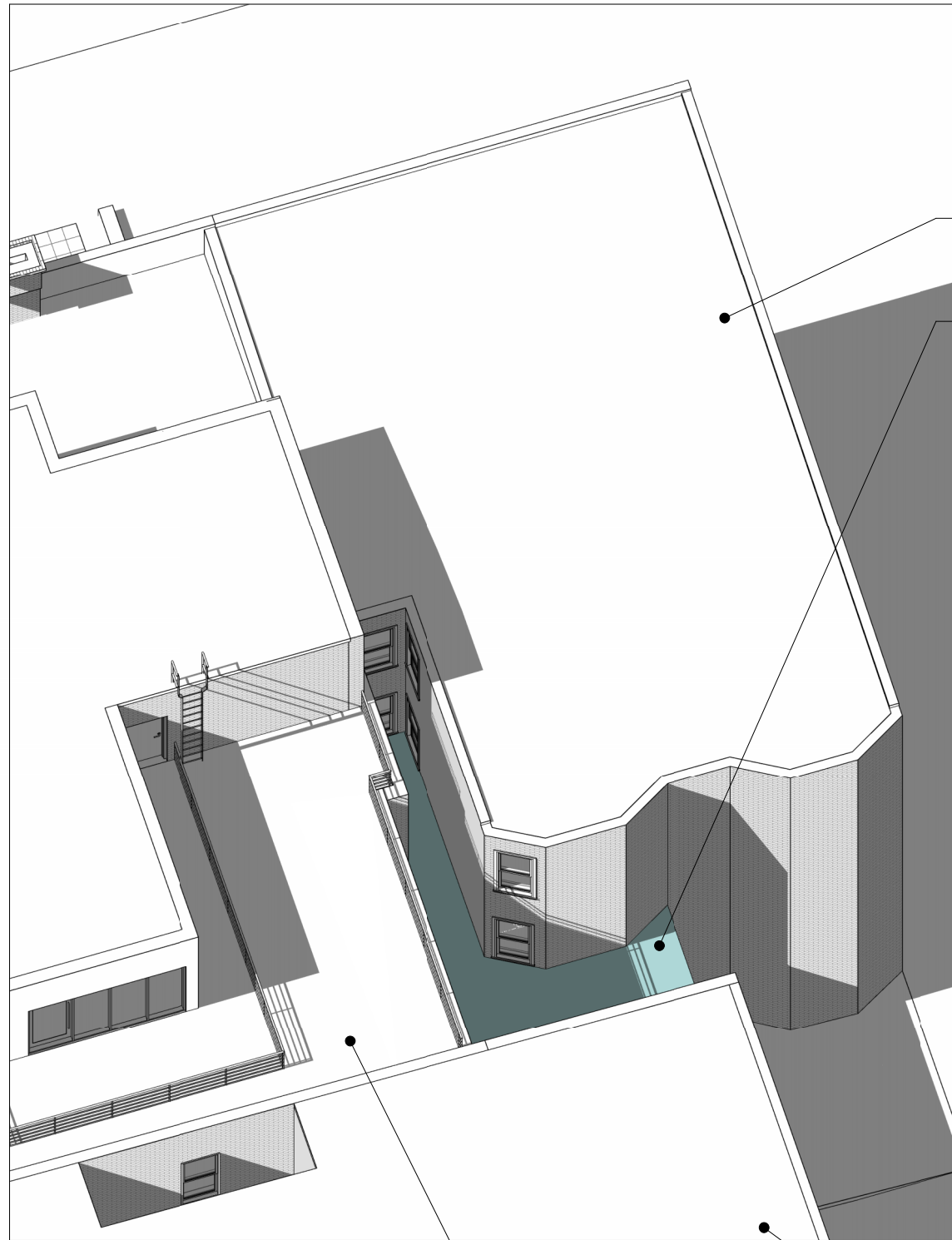
RAYCON

06/28/24  
© 2024 - Bonstra | Haresign Architects

BZA APPROVED CONDITION - SHADOW STUDY AT FALL EQUINOX

1641 R STREET NW

**A04** Bonstra|Haresign  
ARCHITECTS



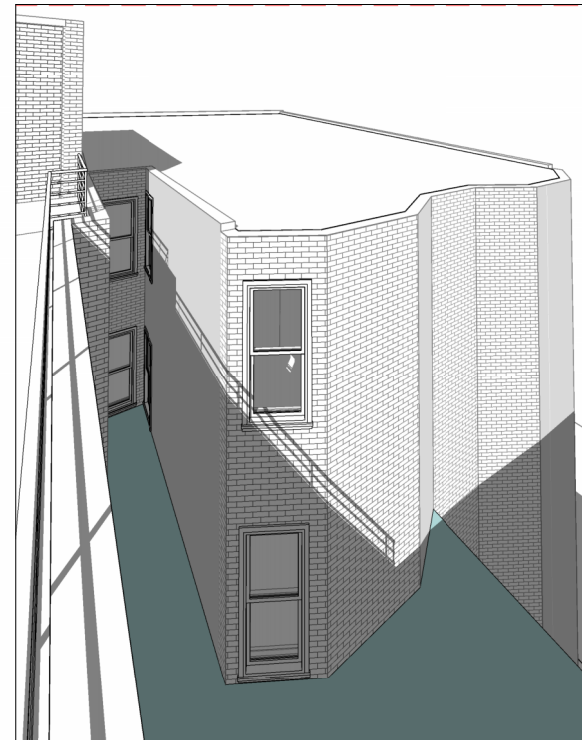
1709-1711 17TH STREET NW

1709 17TH ST.  
PROP. ADDITION

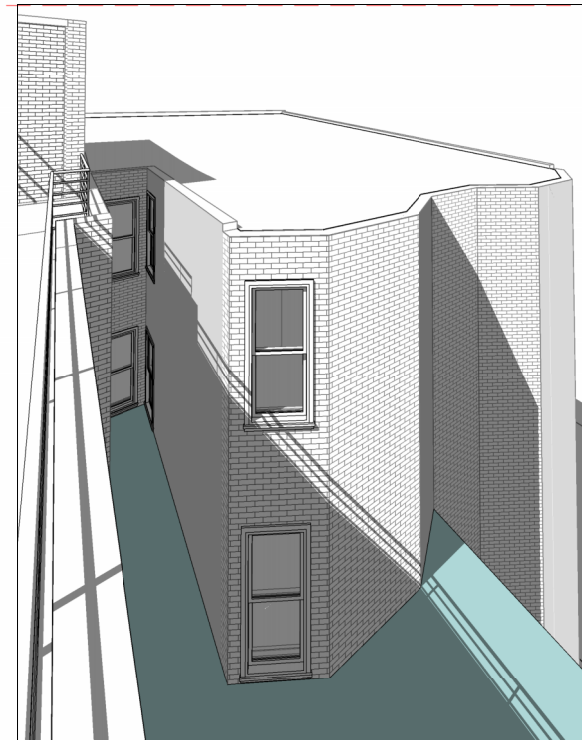
FALL EQUINOX - 12:00 PM

1641 R STREET NW

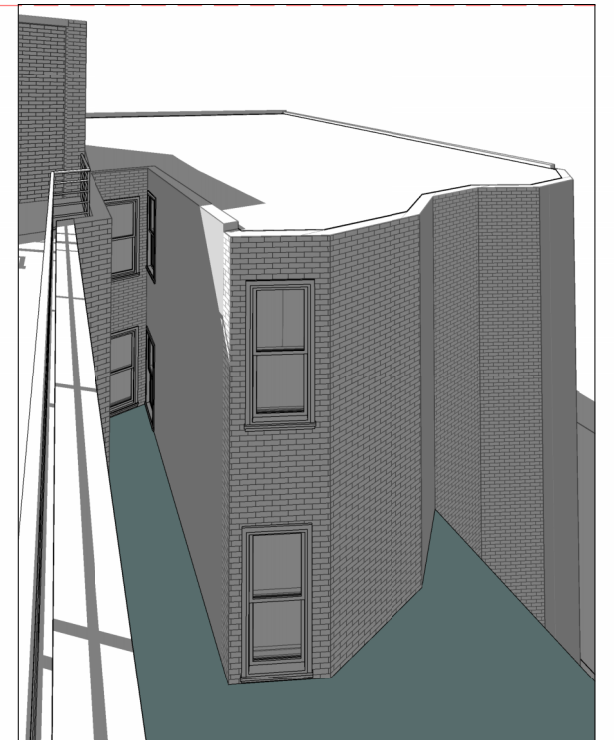
1635 R STREET NW



FALL EQUINOX - 10:00 AM



FALL EQUINOX - 12:00 PM



FALL EQUINOX - 2:00 PM

RAYCON

CURRENT AS BUILT CONDITION - SHADOW STUDY AT FALL EQUINOX

1641 R STREET NW

06/28/24

© 2024 - Bonstra | Haresign Architects

A04.1

Bonstra|Haresign  
ARCHITECTS