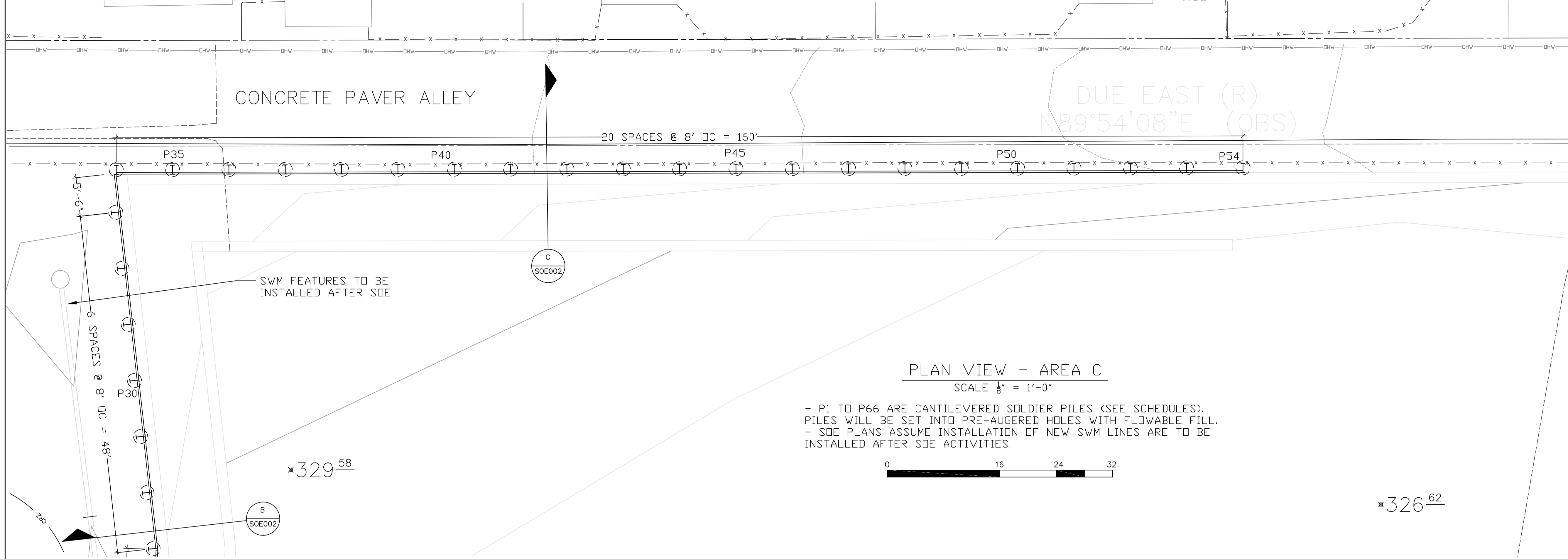


These plans are conditionally approved as submitted or noted during plan review and are subject to field inspection. Approved plans must be kept on site and are needed for all inspections. No changes or modifications to these plans. Changes require a revision permit with the revised plans. Trade Permits are required for trade work. e.g. Electrical or Plumbing

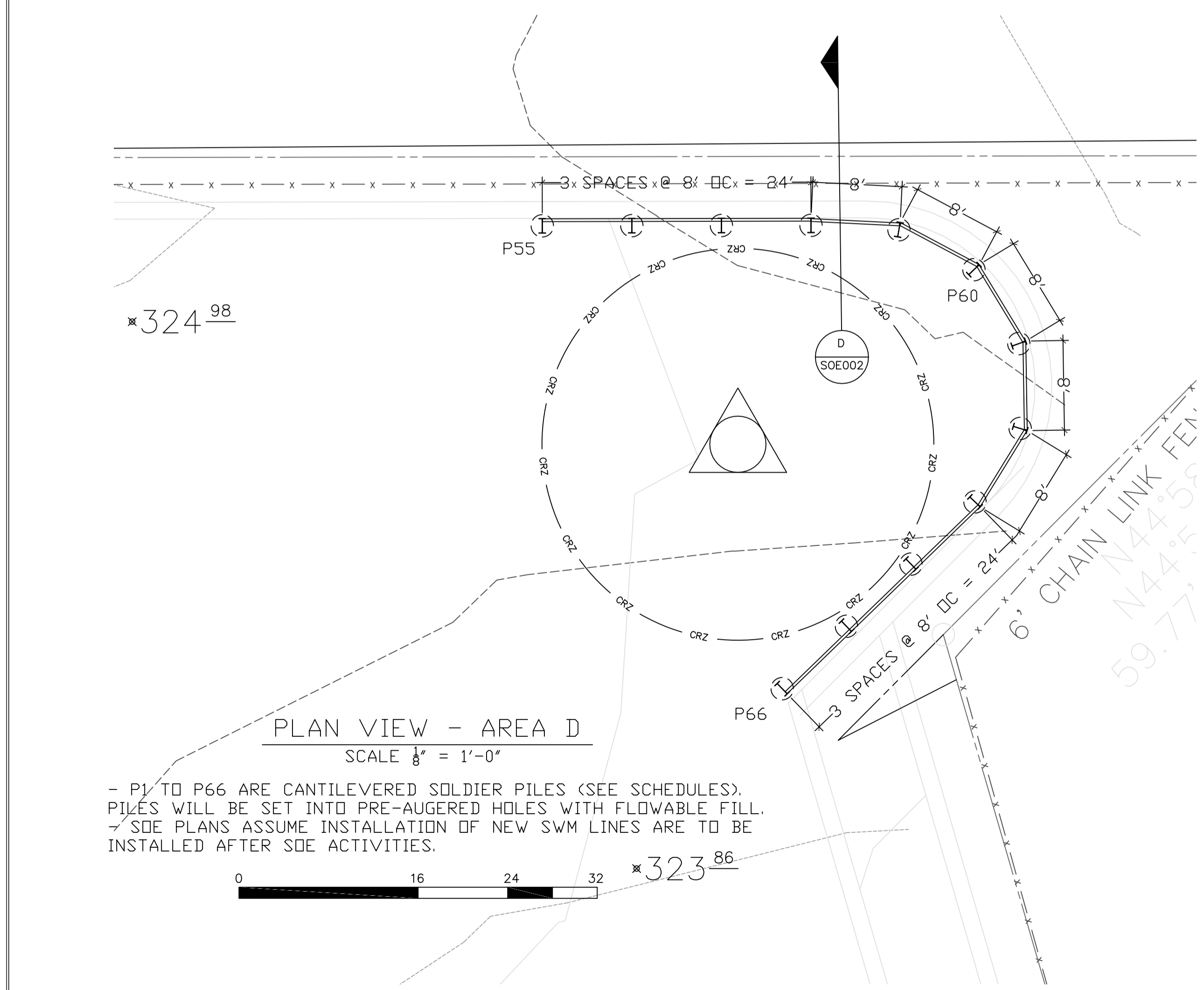
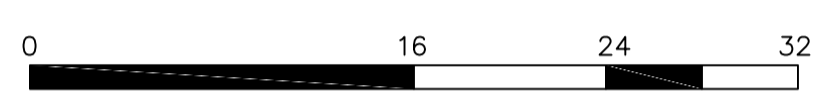
HPRB Review - Timothy Dennee - 04-09-2024
 Zoning Review - Ernesto Warren - 04-09-2024
 Structural Review - Tong Li - 04-09-2024
 DOEE SE-SW Review - Saba Gharavi - 04-09-2024

AFW ENGINEERING, INC
 Ph: (301) 316-5650
 4600 Beech Way
 Temple Hills, MD 20748



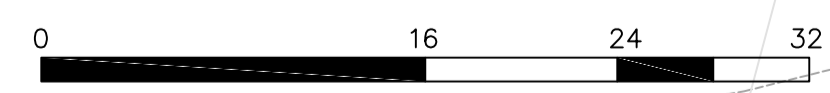
PLAN VIEW - AREA C
 SCALE 1/8" = 1'-0"

- P1 TO P66 ARE CANTILEVERED SOLDIER PILES (SEE SCHEDULES).
 PILES WILL BE SET INTO PRE-AUGERED HOLES WITH FLOWABLE FILL.
 - SDE PLANS ASSUME INSTALLATION OF NEW SWM LINES ARE TO BE INSTALLED AFTER SDE ACTIVITIES.



PLAN VIEW - AREA D
 SCALE 1/8" = 1'-0"

- P1 TO P66 ARE CANTILEVERED SOLDIER PILES (SEE SCHEDULES).
 PILES WILL BE SET INTO PRE-AUGERED HOLES WITH FLOWABLE FILL.
 - SDE PLANS ASSUME INSTALLATION OF NEW SWM LINES ARE TO BE INSTALLED AFTER SDE ACTIVITIES.



NO.	DATE	REVISION	BY

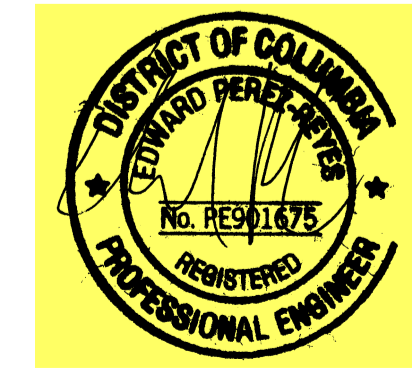
APPROVED FOR WORK TO BE PERFORMED
 BY ATLAS FOUNDATIONS OF WASHINGTON, LLC
 BY: _____
 COPYRIGHT BY AFW ENGINEERING, INC
 AND NOT TO BE COPIED OR REPRODUCED
 WITHOUT WRITTEN PERMISSION.

SHEETING & SHORING

Sheet Title: **PLAN VIEW - C & D**
 Project: **MARET ATHLETIC FIELDS**
 5901 UTAH AVE, NW
 WASHINGTON, DC 20015

Date: 02-02-24
 Engineer: E.P.R
 Drawn By: L.R.E.
 Scale: AS SHOWN

Sheet No. **SOE001B**
 Board of Professional Engineers
 File No. **24-1132**
 Case No. **24-1132**
 Exhibit No. **319**



Rev.