

1 E/W Section - Looking North SE  
SE10A1 3/8" = 1'-0"

NOTE: ELEVATION HEIGHTS INDICATED ABOVE ARE FROM  
GRADE LEVEL ELEVATION 0.0' AT FRONT OF HOUSE

# Lloyd Jones Residence - Deck Renovation

1112 8th St NE

www.kg-rw.com

## Special Exception (w/Added Dimensions)

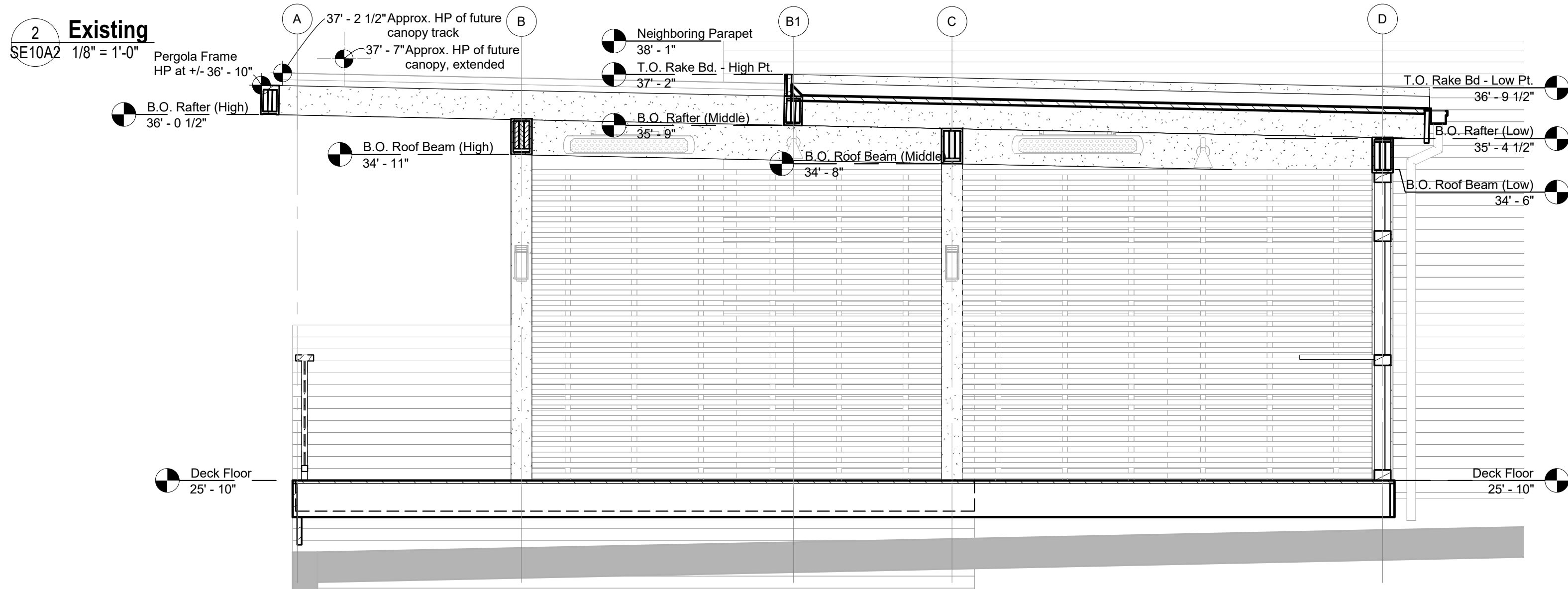
03/08/23

3454 Ellicott Center Drive, Suite 107, Ellicott City, MD 21043

410.680.8900

hello@kg-rw.com

Board of Zoning Adjustment  
District of Columbia  
CASE NO. 2011-1  
EXHIBIT NO. 21  
KGRW & Associates, LLC



**1 E/W Section - Looking North SE**  
SE10A2 3/8" = 1'-0"

NOTE: ELEVATION HEIGHTS INDICATED ABOVE ARE FROM  
GRADE LEVEL ELEVATION 0.0' AT FRONT OF HOUSE

**Lloyd Jones Residence -  
Deck Renovation**  
1112 8th St NE

**Special Exception (w/Added Dimensions)**

03/08/23