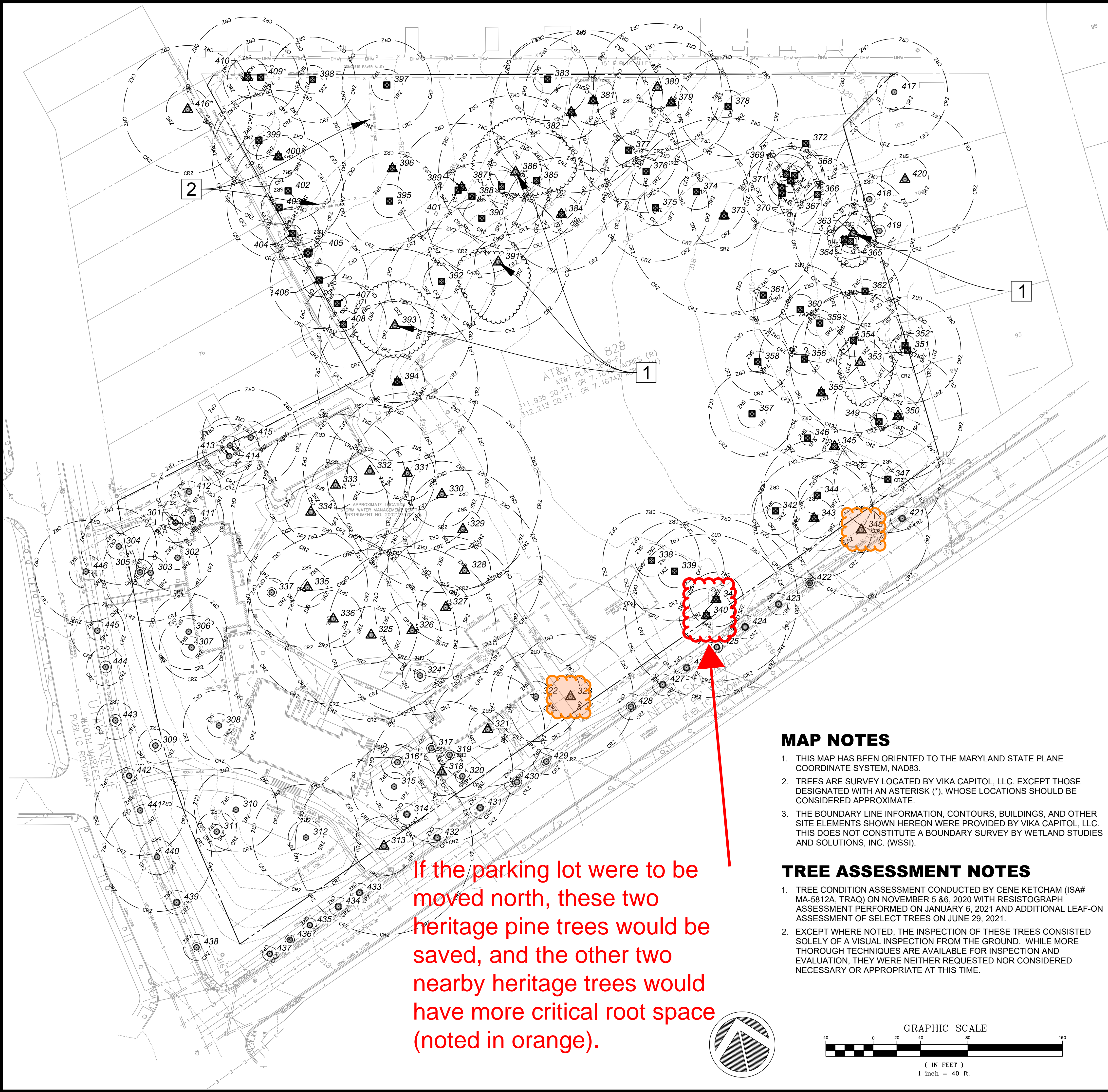


C:\WSS\131006\310003\1089.01\CADD\05-ENV\20220117_cct_transplant_plan_17.dwg LR-1 Plotted By: Kecham, Cene, 1/17/2022 5:00 PM



LEGEND

- EXISTING TREE TO REMAIN WITH CRITICAL ROOT ZONE (CRZ) & STRUCTURAL ROOT ZONE (SRZ), AND APPROX. CANOPY EXTENTS
- EXISTING DC HERITAGE TREE
- EXISTING DC SPECIAL TREE
- EXISTING TREE TO BE REMOVED BY ARBORIST (SEE SPECIFICATIONS)
- TREE TO BE TRANSPLANTED WITH TRANSPLANT ROOTBALL (SOLID LINE).
- TRANSPLANT EXCAVATION AREA
- PROPOSED TREE TRANSPLANT PATH
- PROPOSED TREE PROTECTION FENCE (SEE DETAIL & SPECIFICATIONS)
- PROPOSED ROOT PRUNING (SEE DETAIL & SPECIFICATIONS)

KEYNOTES

- 1** HERITAGE TREE TO BE TRANSPLANTED.
- 2** EX. 4 FT CHAIN LINK FENCE TO BE DEMOLISHED. FENCE ALONG PROPERTY LINE TO REMAIN EXCEPT AS NOTED ON SHEET LR-3.

TRANSPLANT NARRATIVE

MARET SCHOOL IS PROPOSING TO CONSTRUCT ATHLETIC FIELDS AND ASSOCIATED INFRASTRUCTURE (E.G., DRIVEWAYS, PARKING) ON THE SITE OF THE EPISCOPAL CENTER FOR CHILDREN AT 5901 UTAH AVENUE NW. CONSTRUCTION OF THE FIELDS WILL REQUIRE REMOVAL OF SEVERAL REGULATED TREES -- SPECIAL TREES AND POOR CONDITION HERITAGE TREES. TREES TO BE REMOVED ARE SHOWN ON THIS SHEET.

FOUR (4) HERITAGE TREES ARE PROPOSED TO BE TRANSPLANTED PRIOR TO THE OTHER SITE DEVELOPMENT ACTIVITIES. THESE ARE TREES 363, 386, 391, AND 393. TRANSPLANT LOCATIONS AND PROCEDURES ARE SHOWN ON SUBSEQUENT SHEETS ALONG WITH THE CURRENT PROPOSED DESIGN.

TREES ON THE WEST SIDE OF THE PROPERTY AND ALL STREET TREES WILL BE UNAFFECTED BY THE PROPOSED TRANSPLANT ACTIVITY. TREE PROTECTION MEASURES ARE SHOWN ON SUBSEQUENT SHEETS. RECOMMENDATIONS FOR EACH TREE ARE PROVIDED IN THE TREE PROTECTION ACTION KEY (TPAK) ON SHEETS LR-6 AND LR-7.

THE MAINTENANCE PERIOD FOR THE TRANSPLANTED TREES IS THREE YEARS. PERMANENT IRRIGATION AND CONTINUED INSPECTION BEYOND THIS PERIOD IS RECOMMENDED.

THIS PLAN ADDRESSES ONLY THOSE TREE PRESERVATION ACTIVITIES THAT PERTAIN TO THE TREE TRANSPLANT OPERATION AND DOES NOT CONSTITUTE A TREE PRESERVATION PLAN FOR THE REMAINDER OF THE SITE WORK, TO INCLUDE CONSTRUCTION OF THE ATHLETIC FIELDS AND ASSOCIATED INFRASTRUCTURE. A TREE PRESERVATION PLAN FOR THIS WORK WILL BE PROVIDED SEPARATELY. SITE WORK ELEMENTS ARE SHOWN HERE FOR REFERENCE PURPOSES ONLY AND ARE SUBJECT TO CHANGE.

THE TRANSPLANT CONTRACTOR IS ANTICIPATED TO BE ENVIRONMENTAL DESIGN, INC. (EDI).

ANTICIPATED SEQUENCE

- DORMANT SEASON 2021/2022** - INITIAL ROOT PRUNING. INSTALL TEMPORARY IRRIGATION PRIOR TO LEAF OUT.
 - GROWING SEASON 2022** - ROOT BALL CONDITIONING AND INSPECTIONS.
 - DORMANT SEASON 2022/2023** - TREE TRANSPLANT OPERATION
 - 2023 TO 2026** - MAINTENANCE AND MONITORING.
- SEQUENCE SUBJECT TO REVISION BASED ON EXTERNAL FACTORS SUCH AS PERMITTING TIMETABLE. IF ROOT PRUNING IS NOT POSSIBLE IN DORMANT SEASON OF 2021/2022, IT WILL BE RESCHEDULED FOR THE DORMANT SEASON OF 2022/2023. A FULL GROWING SEASON OF ROOT BALL CONDITIONING WILL TAKE PLACE REGARDLESS OF ANY DELAYS. SEE SHEET LR-5 FOR ADDITIONAL DETAIL ON THE TRANSPLANT PROCESS.

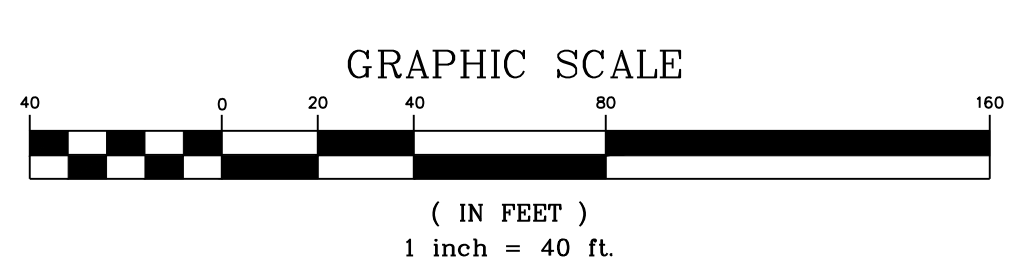
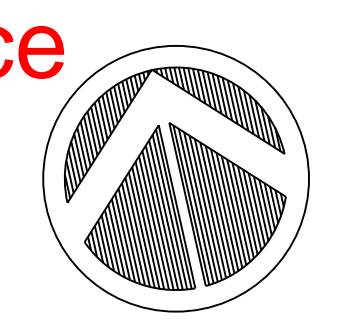
MAP NOTES

1. THIS MAP HAS BEEN ORIENTED TO THE MARYLAND STATE PLANE COORDINATE SYSTEM, NAD83.
2. TREES ARE SURVEY LOCATED BY VIKI CAPITOL, LLC. EXCEPT THOSE DESIGNATED WITH AN ASTERISK (*), WHOSE LOCATIONS SHOULD BE CONSIDERED APPROXIMATE.
3. THE BOUNDARY LINE INFORMATION, CONTOURS, BUILDINGS, AND OTHER SITE ELEMENTS SHOWN HEREON WERE PROVIDED BY VIKI CAPITOL, LLC. THIS DOES NOT CONSTITUTE A BOUNDARY SURVEY BY WETLAND STUDIES AND SOLUTIONS, INC. (WSSI).

TREE ASSESSMENT NOTES

1. TREE CONDITION ASSESSMENT CONDUCTED BY CENE KETCHAM (ISA# MA-5812A, TRAQ) ON NOVEMBER 5 & 6, 2020 WITH RESISTOGRAPH ASSESSMENT PERFORMED ON JANUARY 6, 2021 AND ADDITIONAL LEAF-ON ASSESSMENT OF SELECT TREES ON JUNE 29, 2021.
2. EXCEPT WHERE NOTED, THE INSPECTION OF THESE TREES CONSISTED SOLELY OF A VISUAL INSPECTION FROM THE GROUND. WHILE MORE THOROUGH TECHNIQUES ARE AVAILABLE FOR INSPECTION AND EVALUATION, THEY WERE NEITHER REQUESTED NOR CONSIDERED NECESSARY OR APPROPRIATE AT THIS TIME.

If the parking lot were to be moved north, these two heritage pine trees would be saved, and the other two nearby heritage trees would have more critical root space (noted in orange).



1131 Benfield Boulevard • Suite L
Millersville, Maryland 21108
Phone: 410-672-5990 • Fax: 410-672-5993
www.wetlands.com

HERITAGE TREE TRANSPLANT PLAN

Existing Conditions - Plan View

Episcopal Center for Children
Washington, DC

Copyright © 2022 Wetland Studies and Solutions, Inc.



REVISIONS			App. By:	Rev. By:	Scale:
No.	Date	Description	App. By:	Rev. By:	Scale:
1	10/17/22	PER. 0307 COMMENTS / REVISED LOCATIONS	CK	CK	C1:1.2

DATE: 10/25/2021 SCALE: 1" = 40'

Horizontal Datum: MD NAD 83
Vertical Datum: NAVD 88
Boundary and Topo Source: Vika Capitol

Design	Draft	Approved
CK	CK	CC

Sheet #
LR-1

WSSI Project Number: 31089.01
District of Columbia
Case No. 20643
Date: 1/17/22