



* Free2Move has 600 cars in the District. Since Free2Move vehicles can be returned to any legal on-street parking space in the District, their locations could not be shown on this map.

Capital Bikeshare has 1,500 electric bikes that can be parked at any Capital Bikeshare dock or any public bike rack. Since their location is constantly changing, they are not shown on this map.

Figure 3
Multi-Modal Transportation Network

- ★ Site
- xx Bus Stop (Route Number)
- # Capital Bike Share (Number of Docks)
- # Zipcar (Number of Cars)



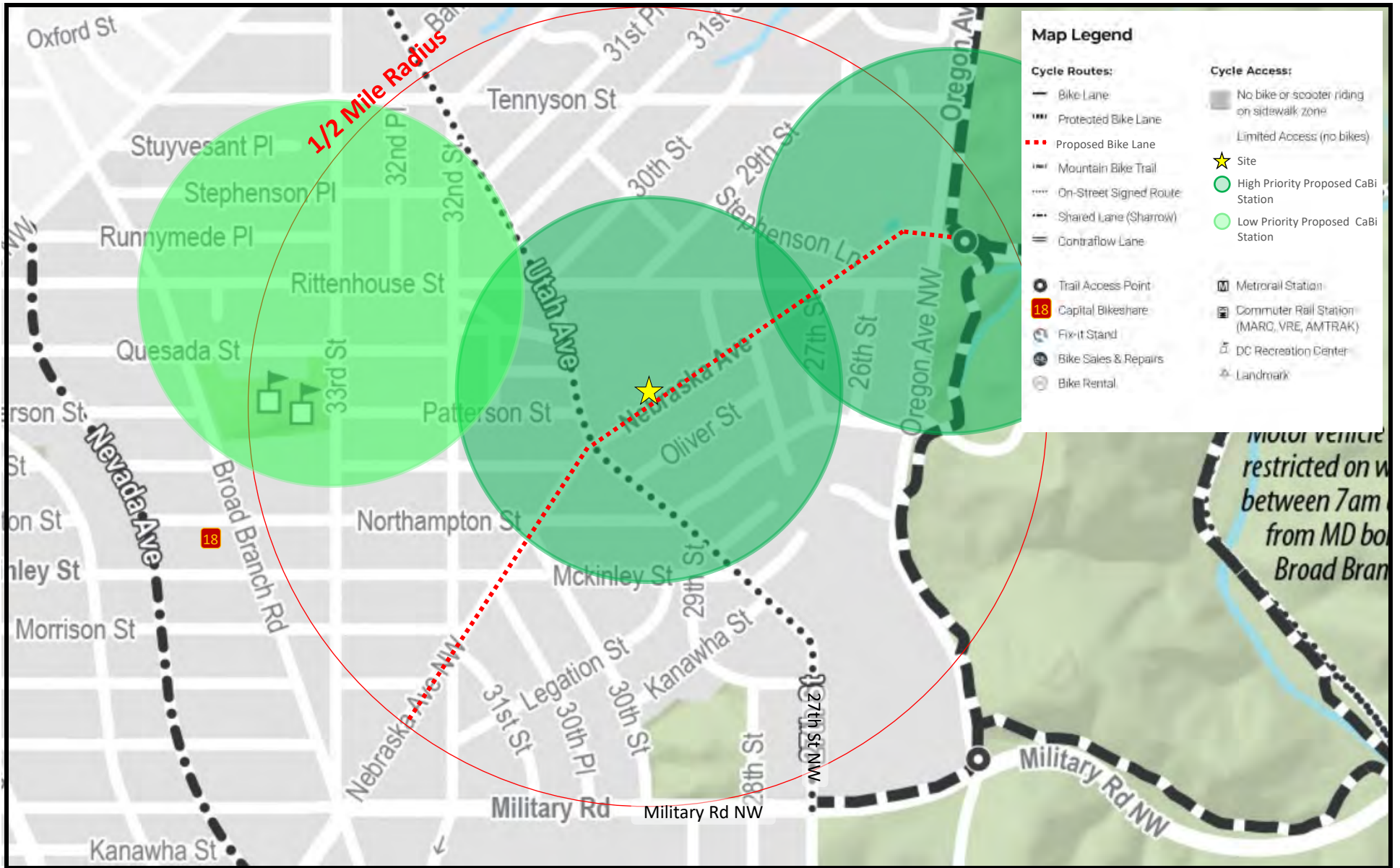


Figure 5
Half-Mile Bike Shed



NORTH

**Maret Ball Fields
Washington, DC**



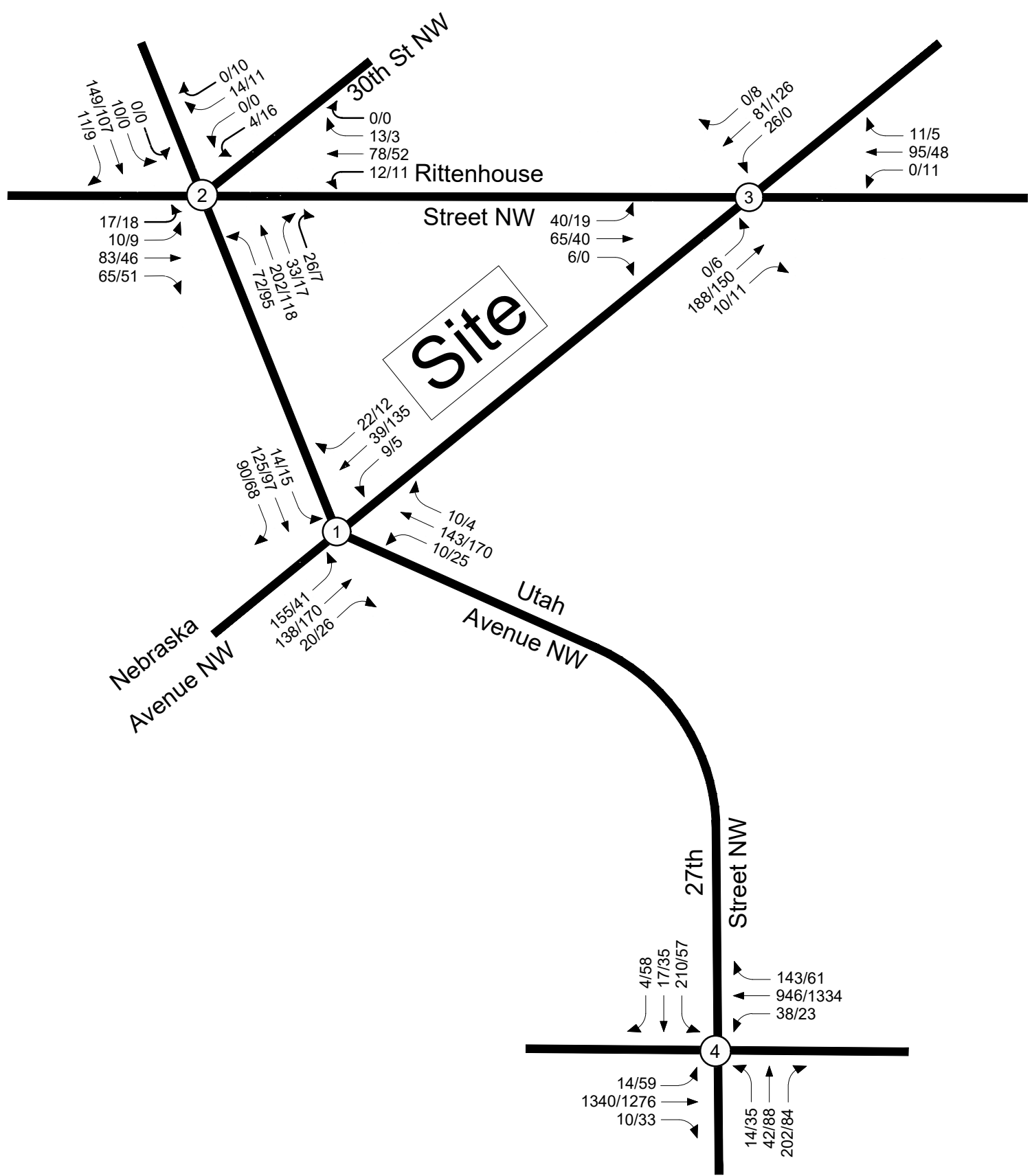


Figure 6
2021 Traffic Volumes


NORTH
Maret School
Washington, DC



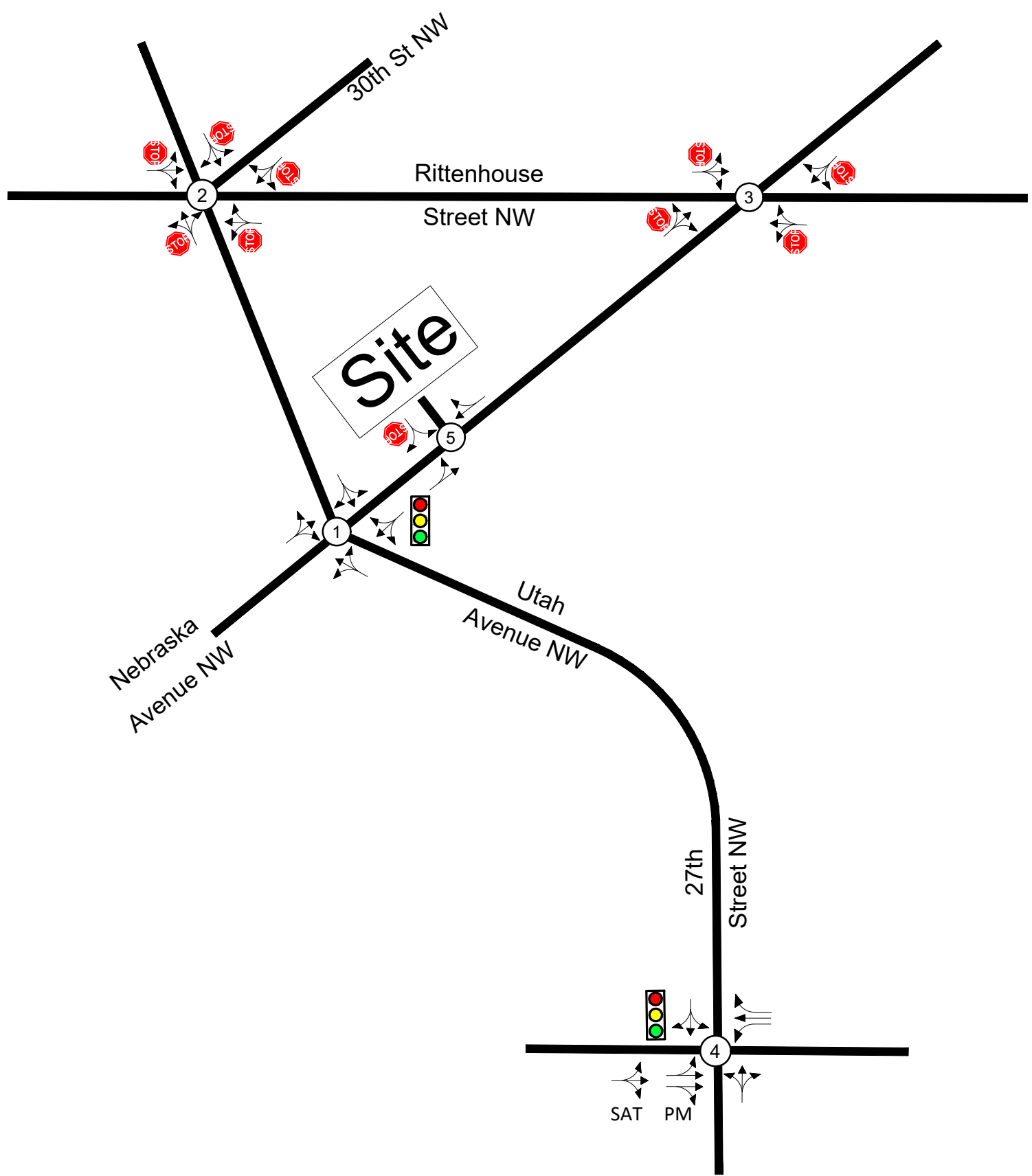
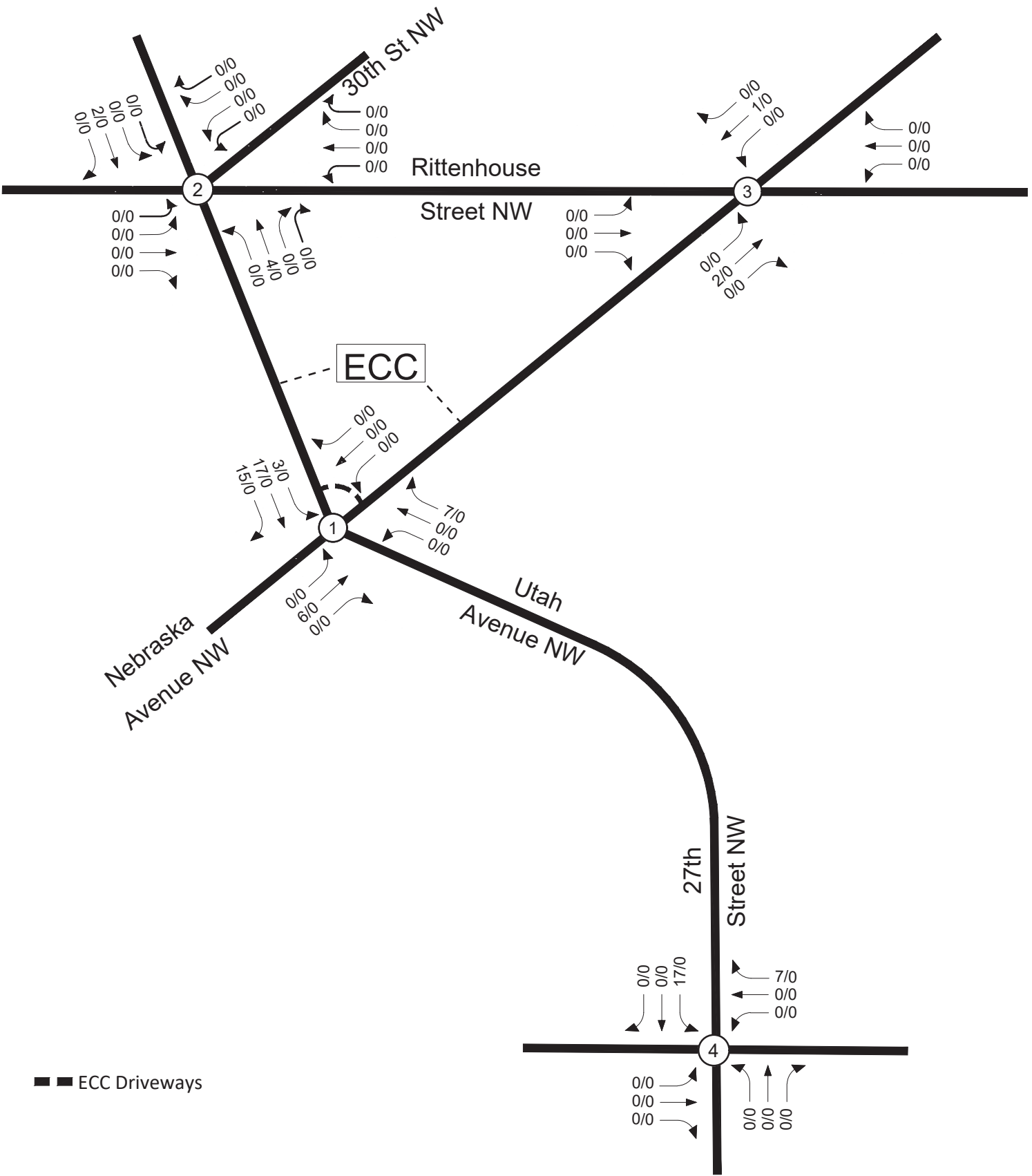


Figure 7
Existing Lane Use and Traffic Control


NORTH
Maret School
Washington, DC





■ ECC Driveways

Figure 8
Pipeline Site Trips


NORTH
Maret School
Washington, DC



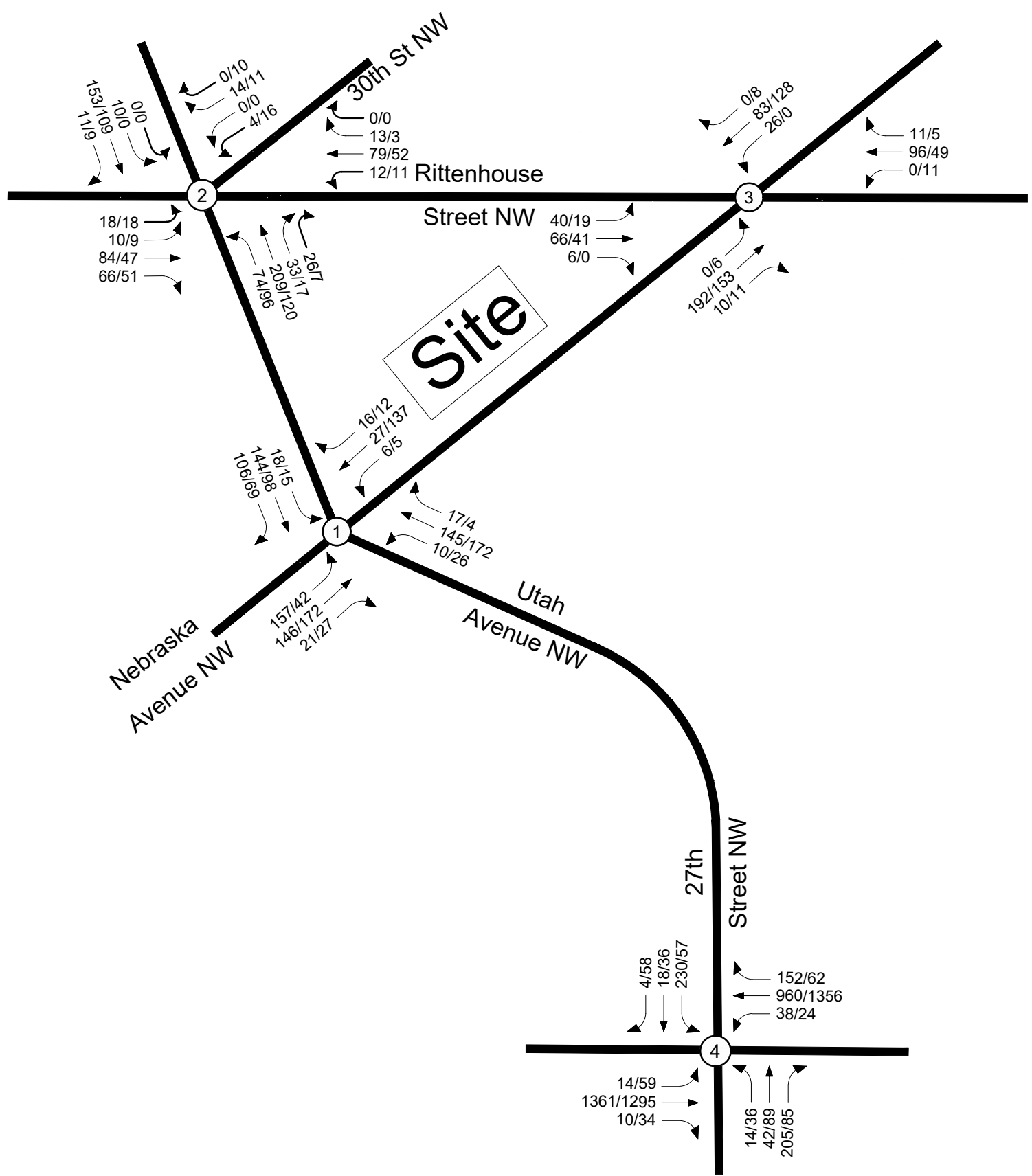
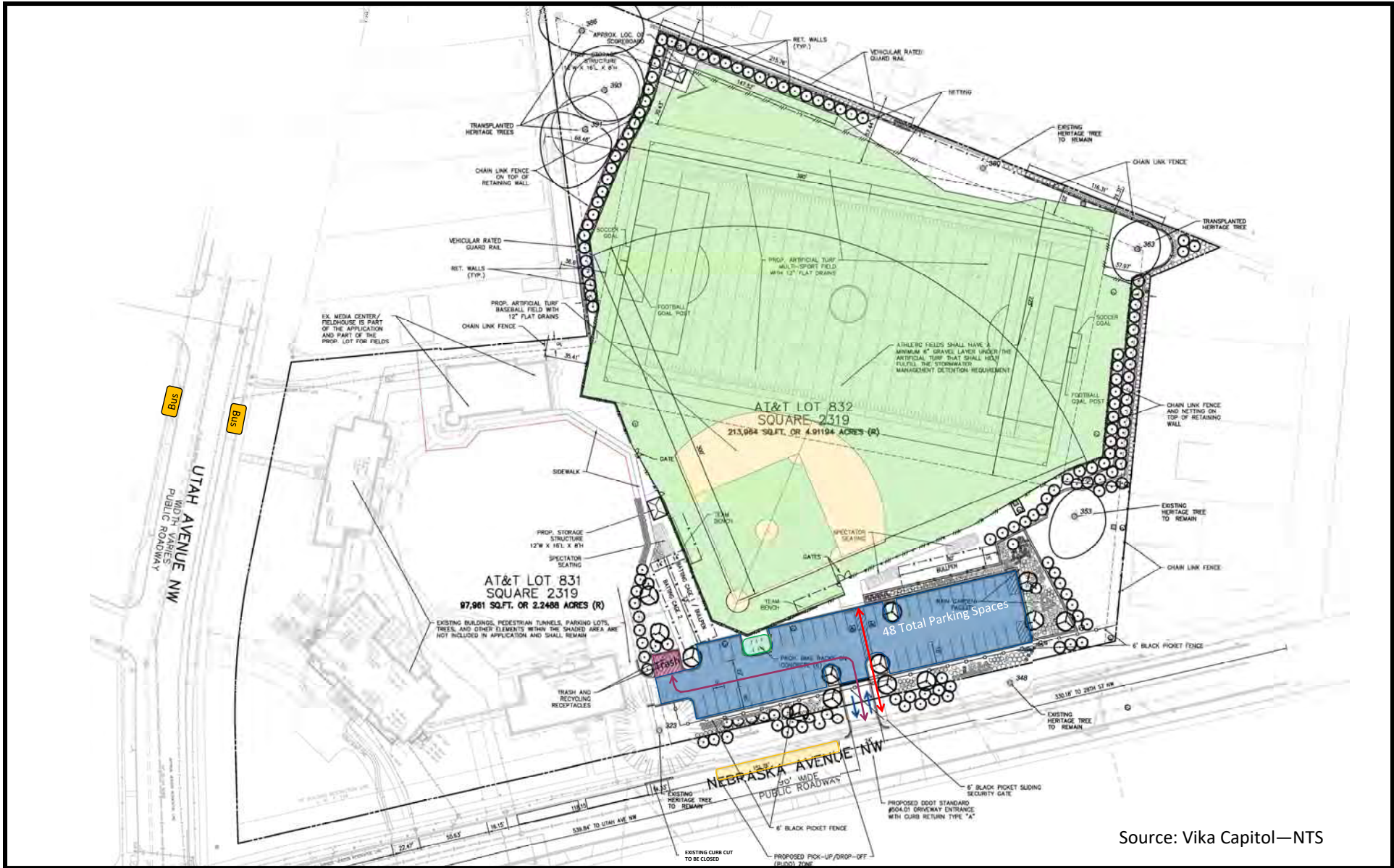


Figure 9
2024 Background Traffic Forecasts





Source: Vika Capitol—NTS

Figure 10
Site Circula. on

- Inbound/Outbound Vehicle Access
- Trash Pick-Up Access
- Pedestrian Access
- Bus Metrobus Stop (M4)
- Short-Term Bicycle Parking
- Bus Pick-Up/Drop Off Zone (100' Maret Events Only)
- 5 Minute Pick-Up/Drop Off All Other Times



NORTH

**Maret Sports Fields
Washington, DC**



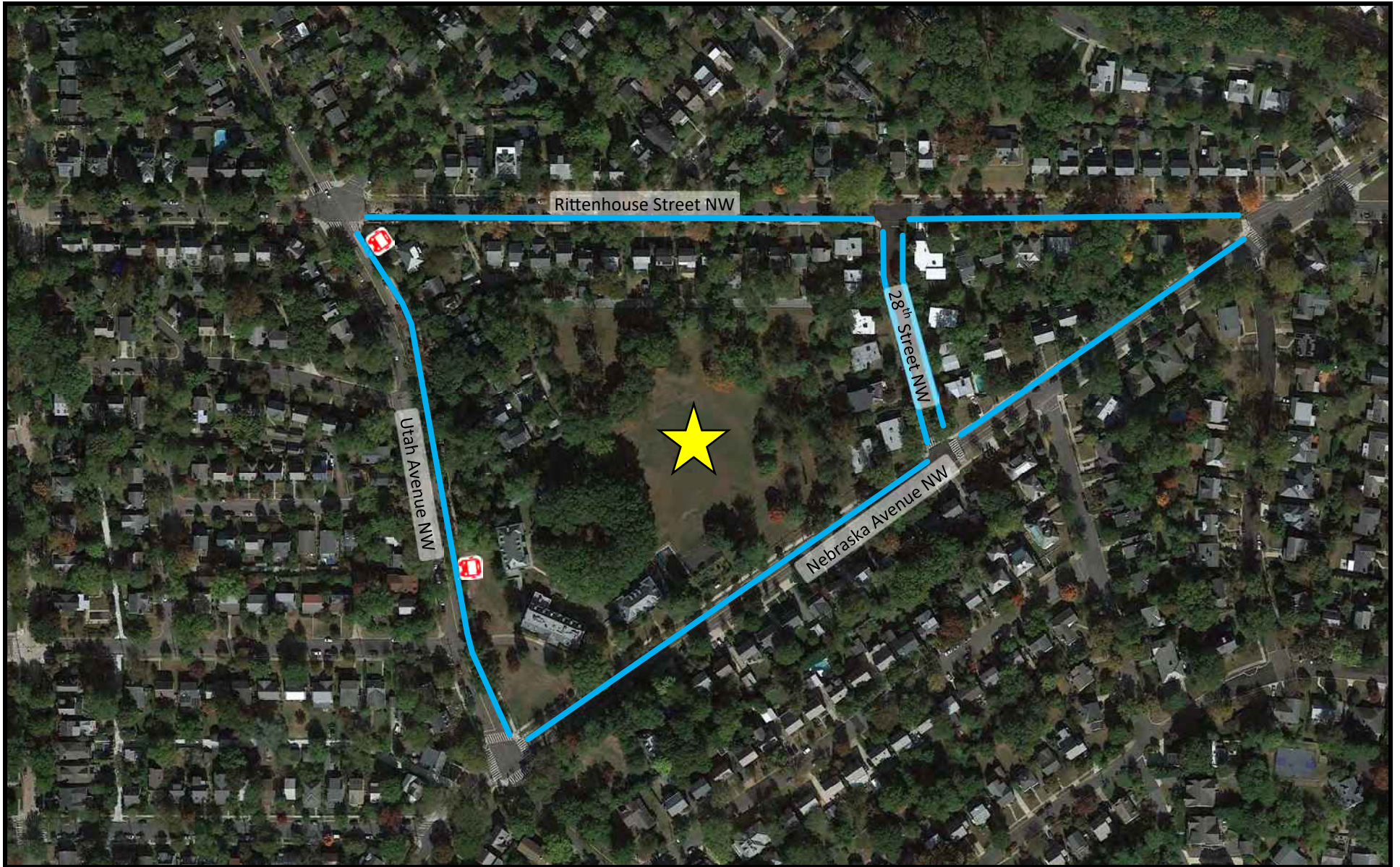


Figure 11A
 Exis. ng Curbside Management Plan

- ★ Site Location
- Bus Stop
- Unrestricted Parking



NORTH

Maret Ball Fields
 Washington, DC





Source: Vika Capitol—All Distances are Approximate—NTS

Figure 11B
Proposed Curbside Management Plan

- █ No Parking
- █ Unrestricted Parking
- █ Bus Pick-Up/Drop Off Zone (Maret Events Only)
5 Minute Pick-Up/Drop-Off All Other Times



NORTH

**Maret Ball Fields
Washington, DC**



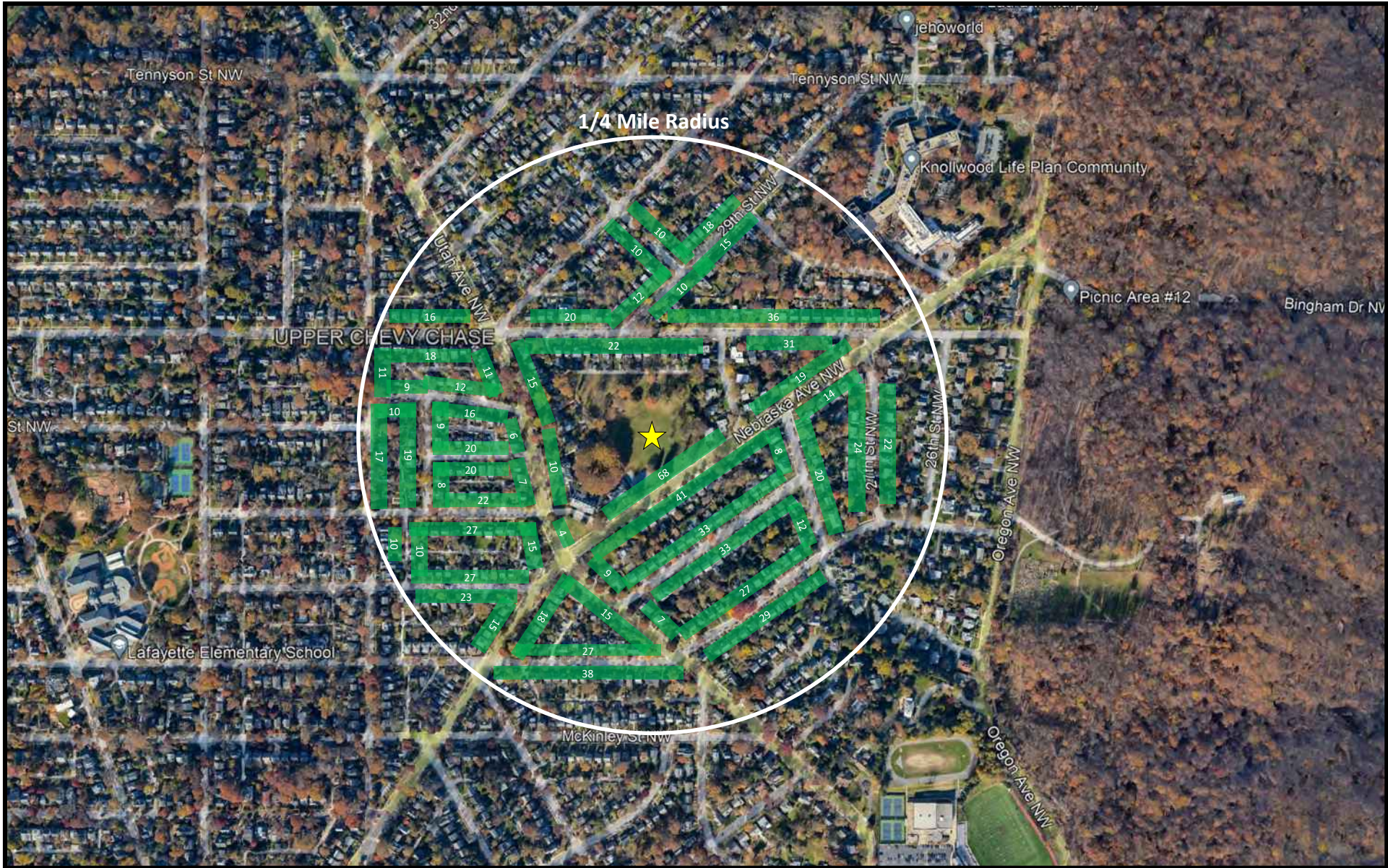


Figure 12
On-Street Parking Inventory



NORTH

**Maret Ball Fields
Washington, DC**



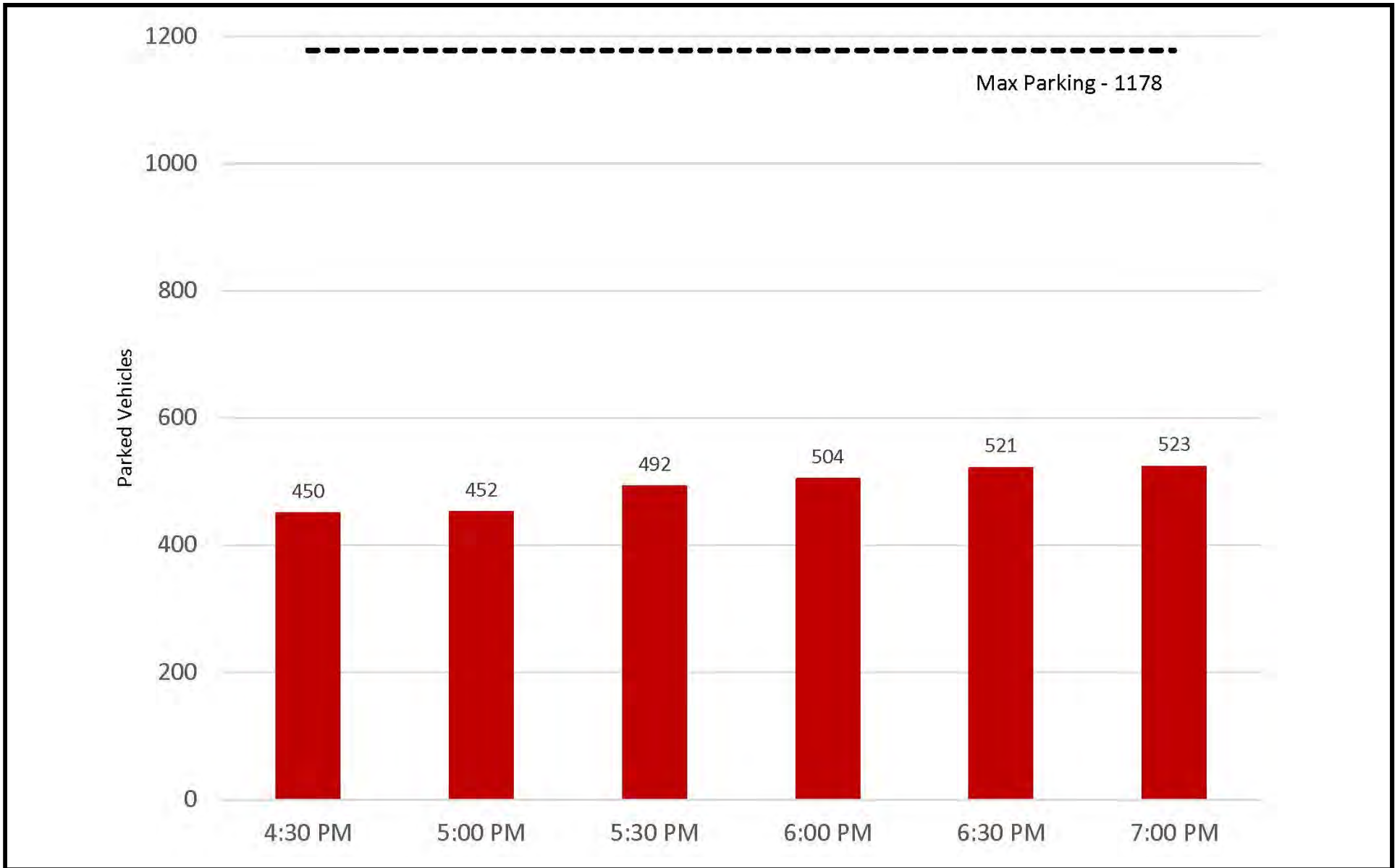


Figure 13
Weekday (Wednesday) Parking Demand
Spaces vs. Time of Day



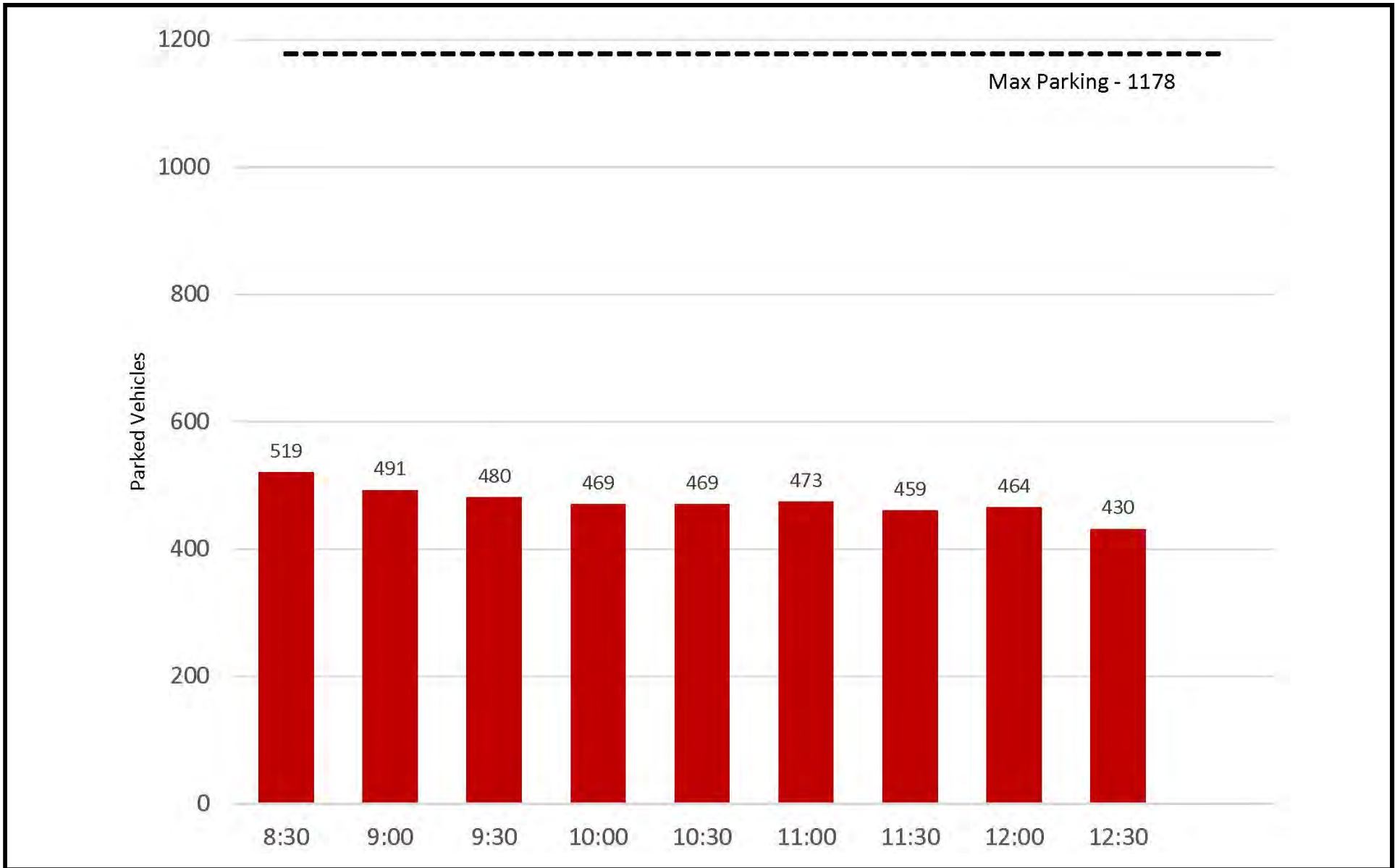


Figure 14
Saturday Parking Demand
Occupied Spaces vs. Time of Day

M&T Ball Fields
Washington, DC



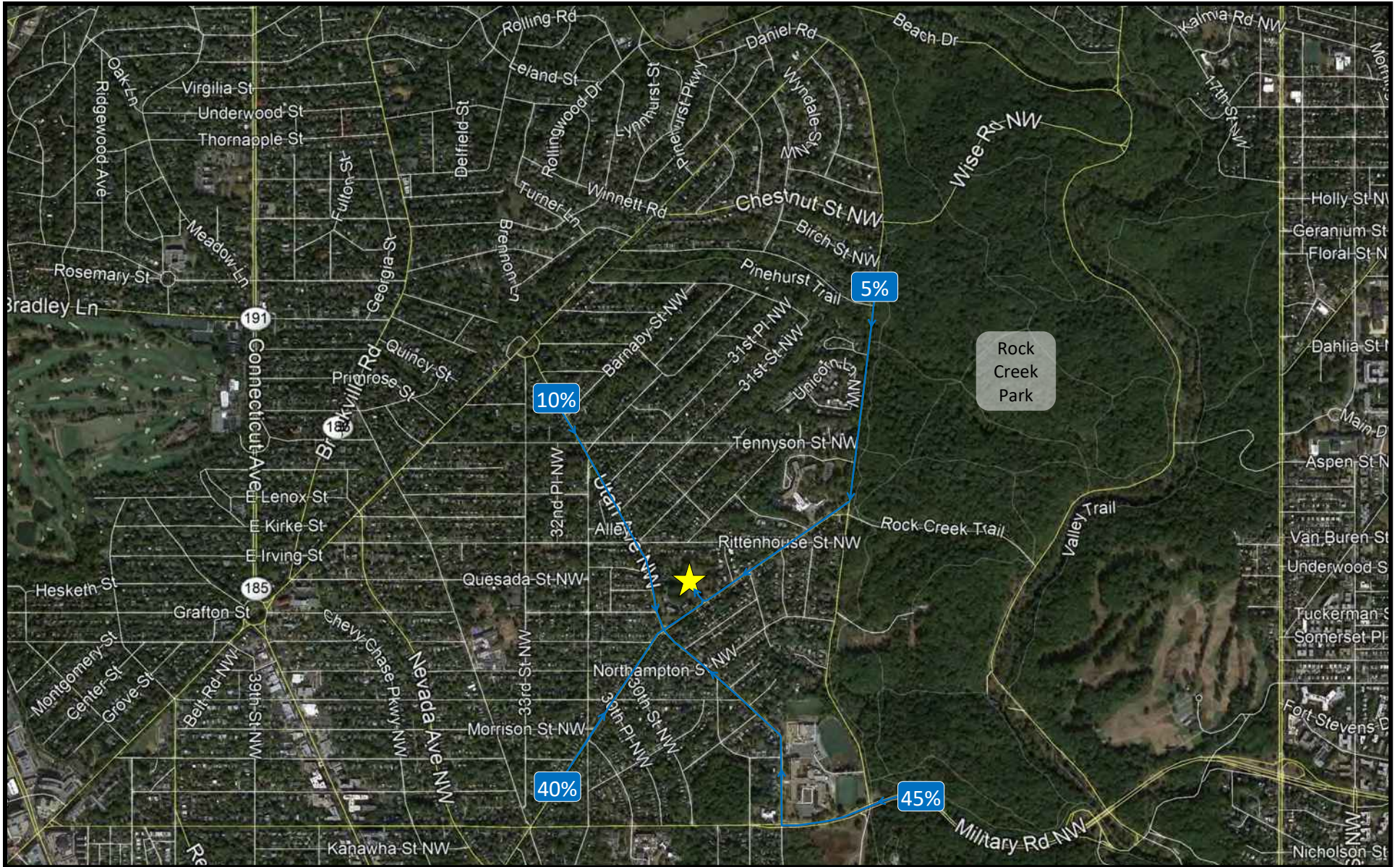


Figure 15A
Site Trip Distributions—Inbound

★ Site Location



NORTH

Maret Ball Fields
Washington, DC



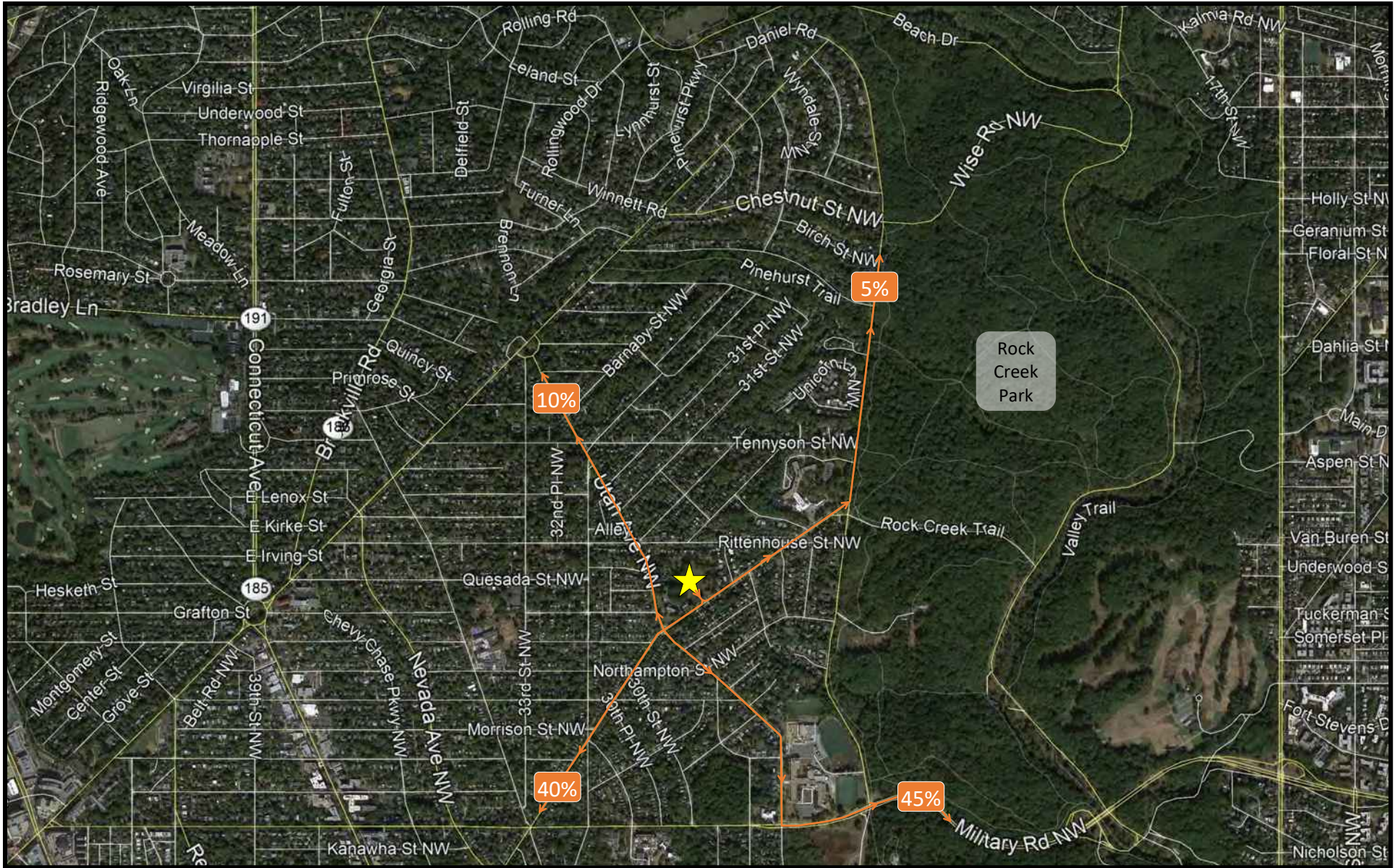


Figure 15B
Site Trip Distributions—Outbound

★ Site Location



NORTH

**Maret Ball Fields
Washington, DC**



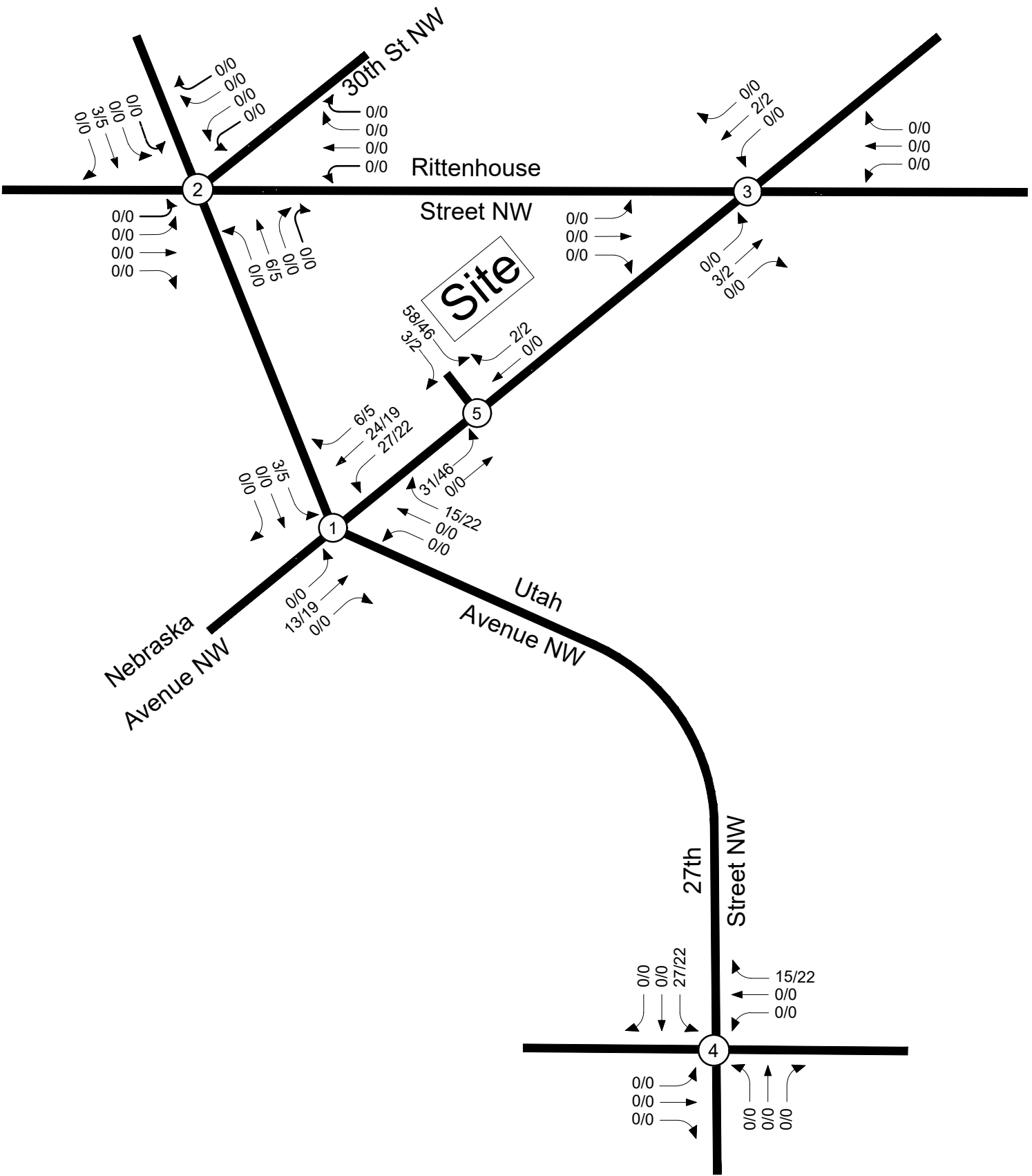


Figure 16
Site Trip Volumes


NORTH
Maret School
Washington, DC



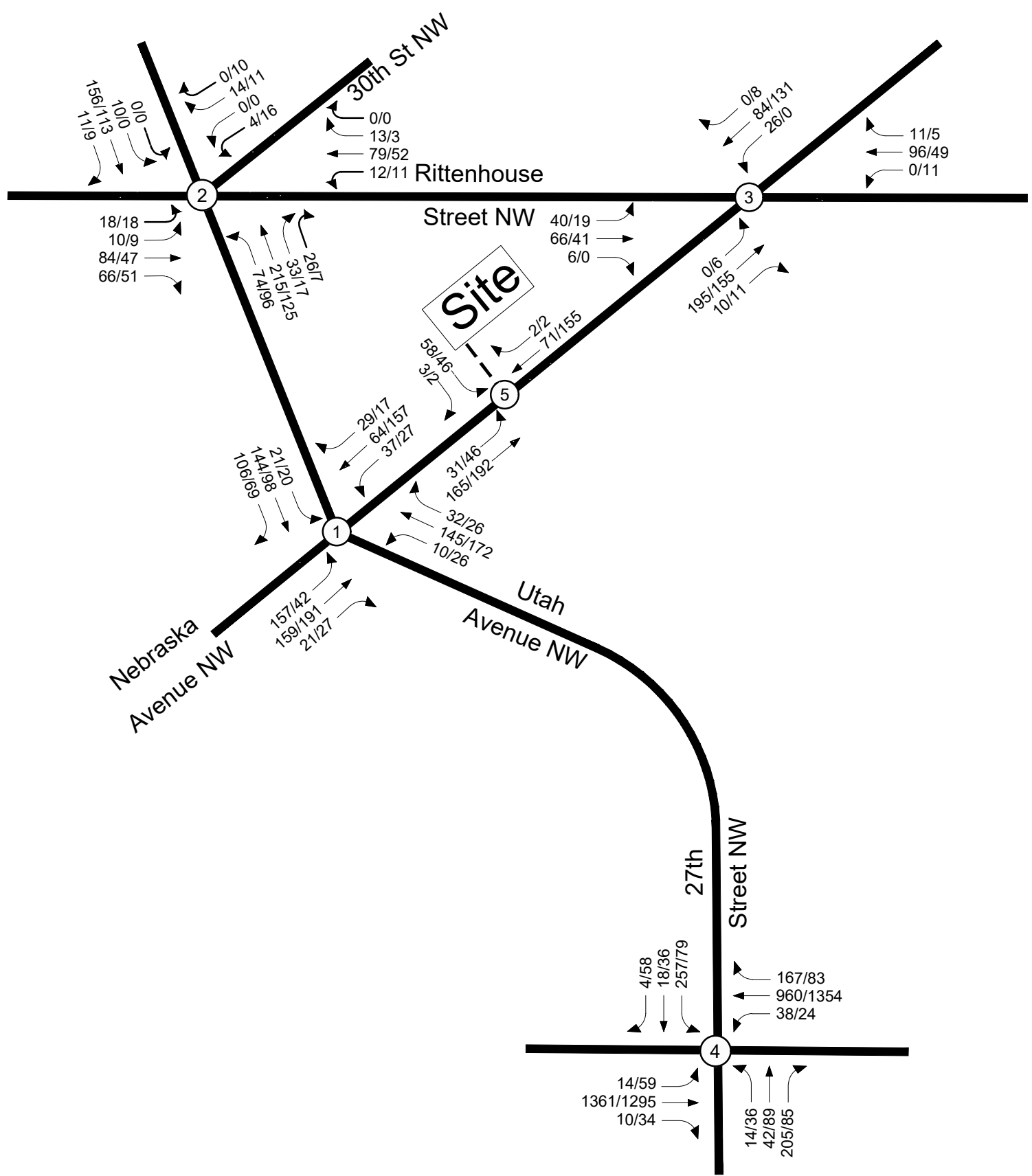


Figure 17
2024 Total Future Traffic Forecasts

