



\* Free2Move has 600 cars in the District. Since Free2Move vehicles can be returned to any legal on-street parking space in the District, their locations could not be shown on this map.

# Capital Bikeshare has 1,500 electric bikes that can be parked at any Capital Bikeshare dock or any public bike rack. Since their location is constantly changing, they are not shown on this map.

**Figure 3**  
Multi-Modal Transportation Network

- ★ Site
- xx Bus Stop (Route Number)
- # Capital Bike Share (Number of Docks)
- # Zipcar (Number of Cars)





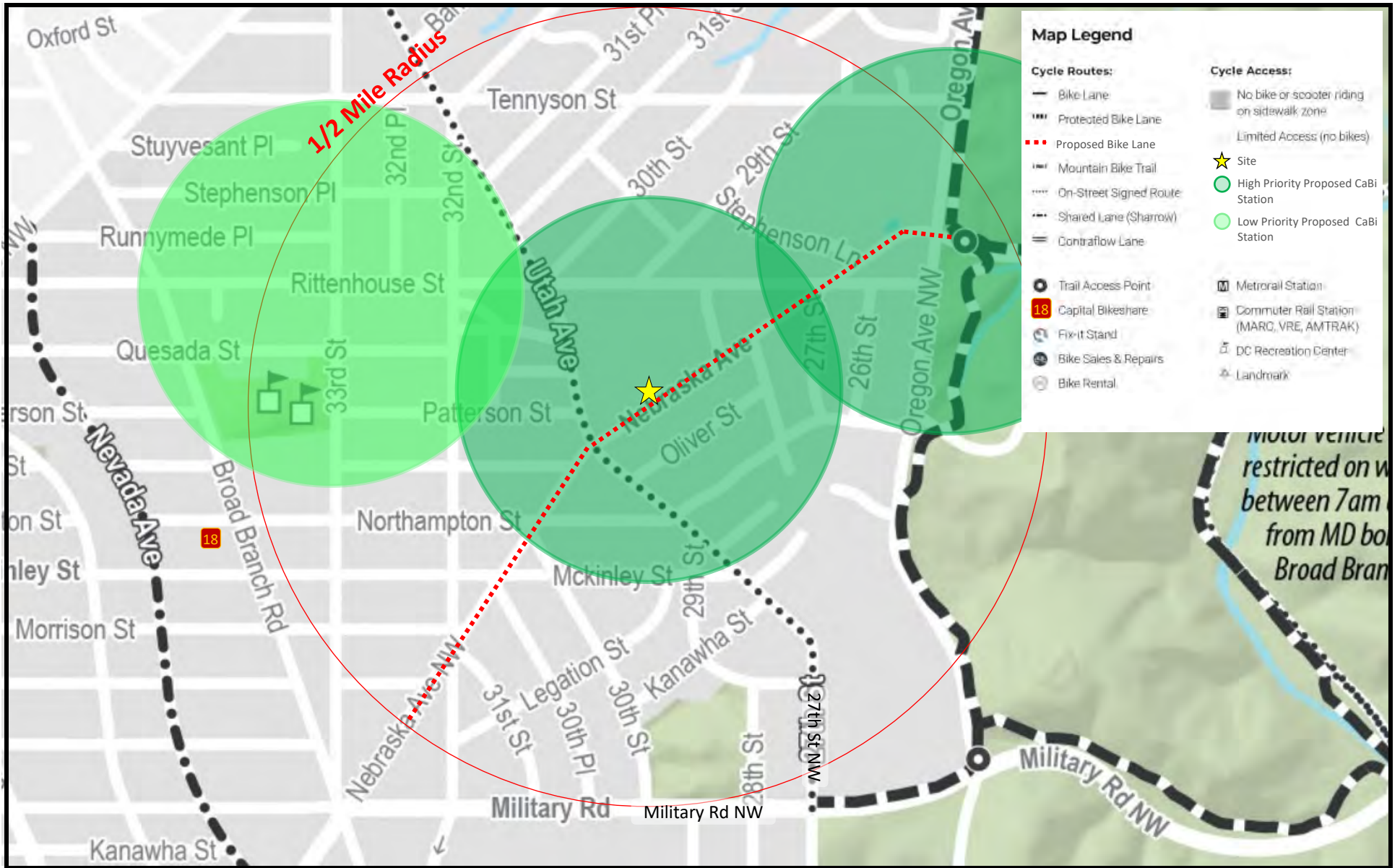
**Figure 4**  
Quarter Mile Walk-Shed



**NORTH**

Maret Ball Fields  
Washington, DC





**Figure 5**  
Half-Mile Bike Shed



**NORTH**

**Maret Ball Fields  
Washington, DC**



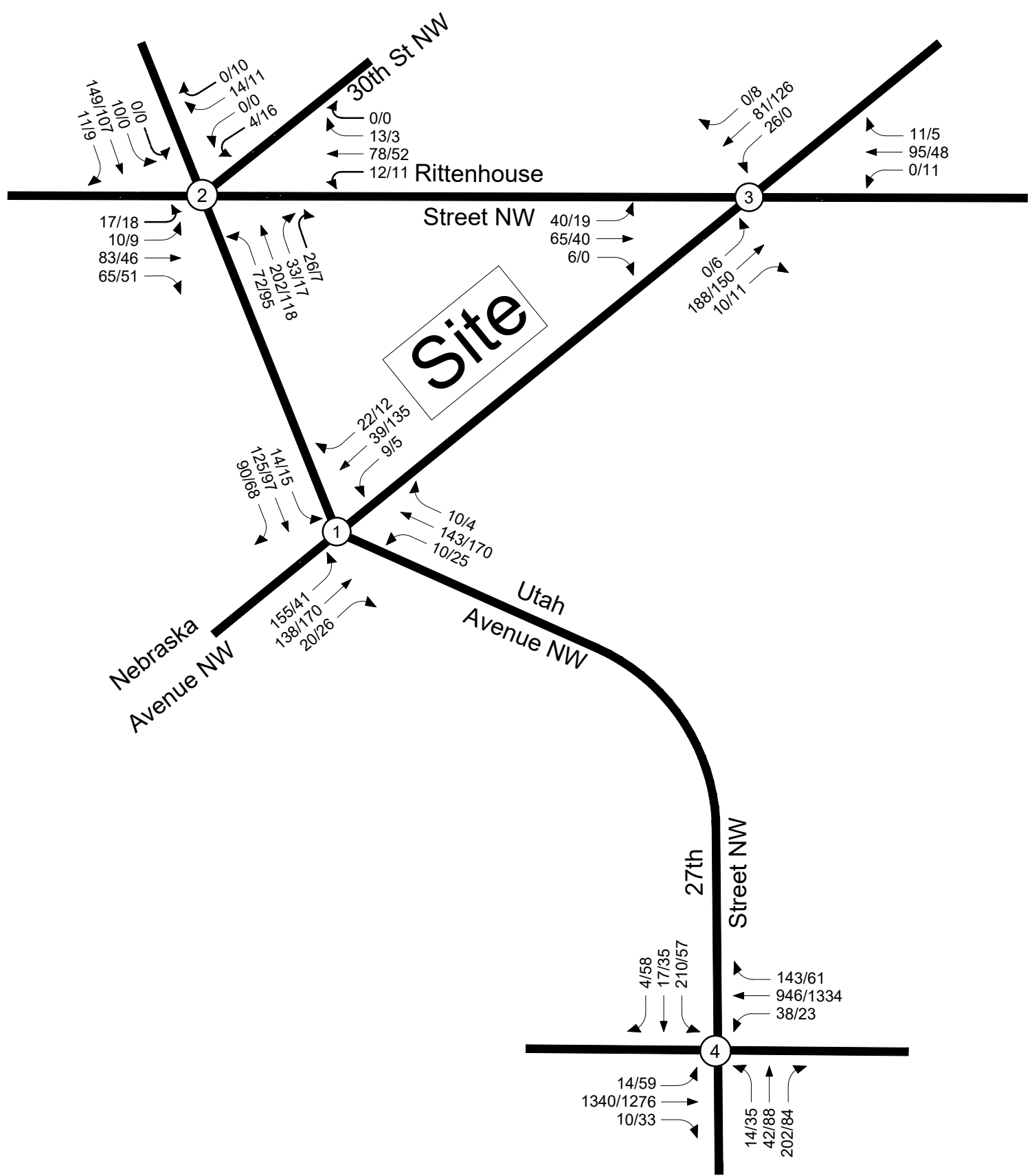


Figure 6  
2021 Traffic Volumes



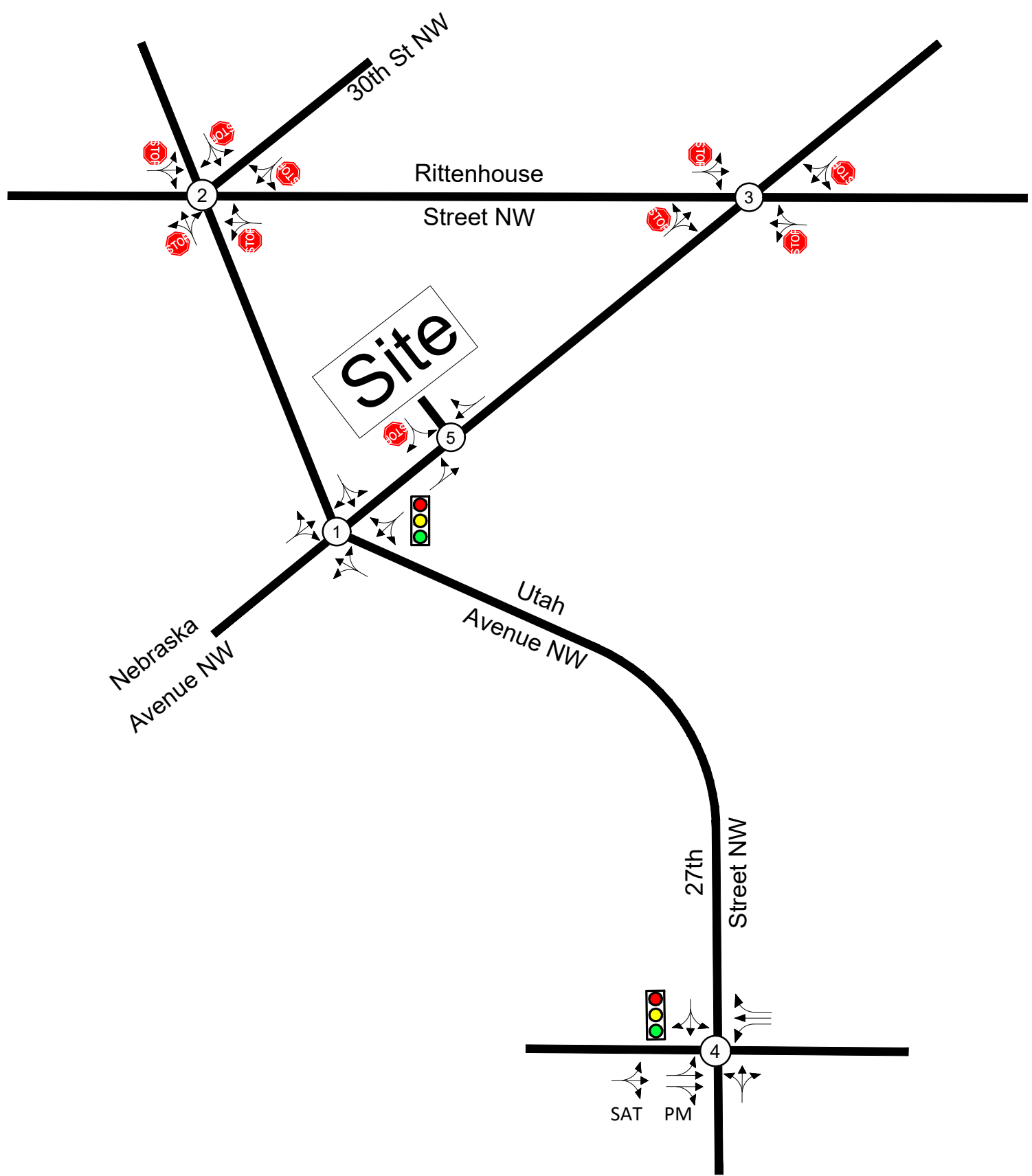
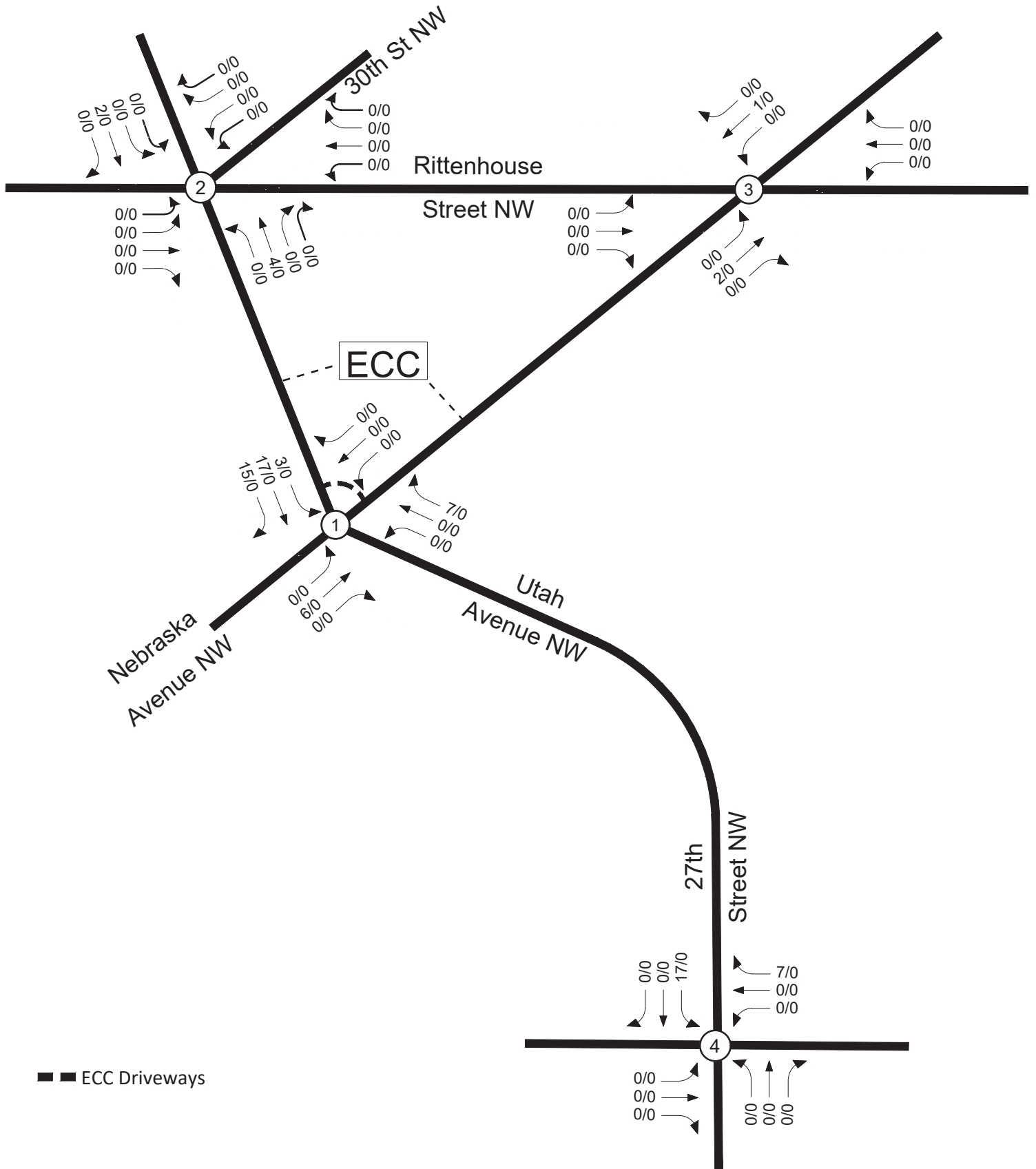
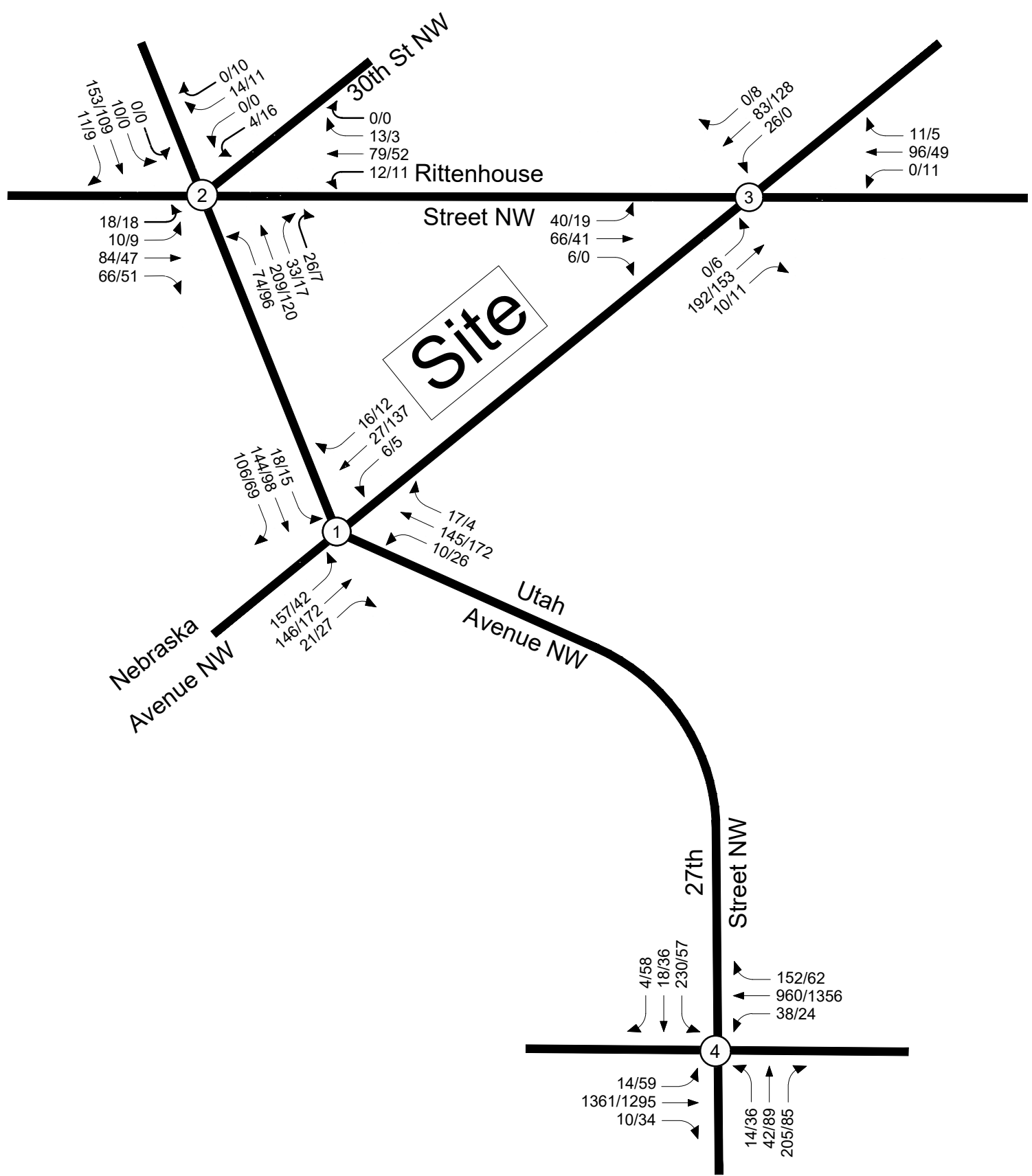


Figure 7  
Existing Lane Use and Traffic Control

  
NORTH  
Maret School  
Washington, DC

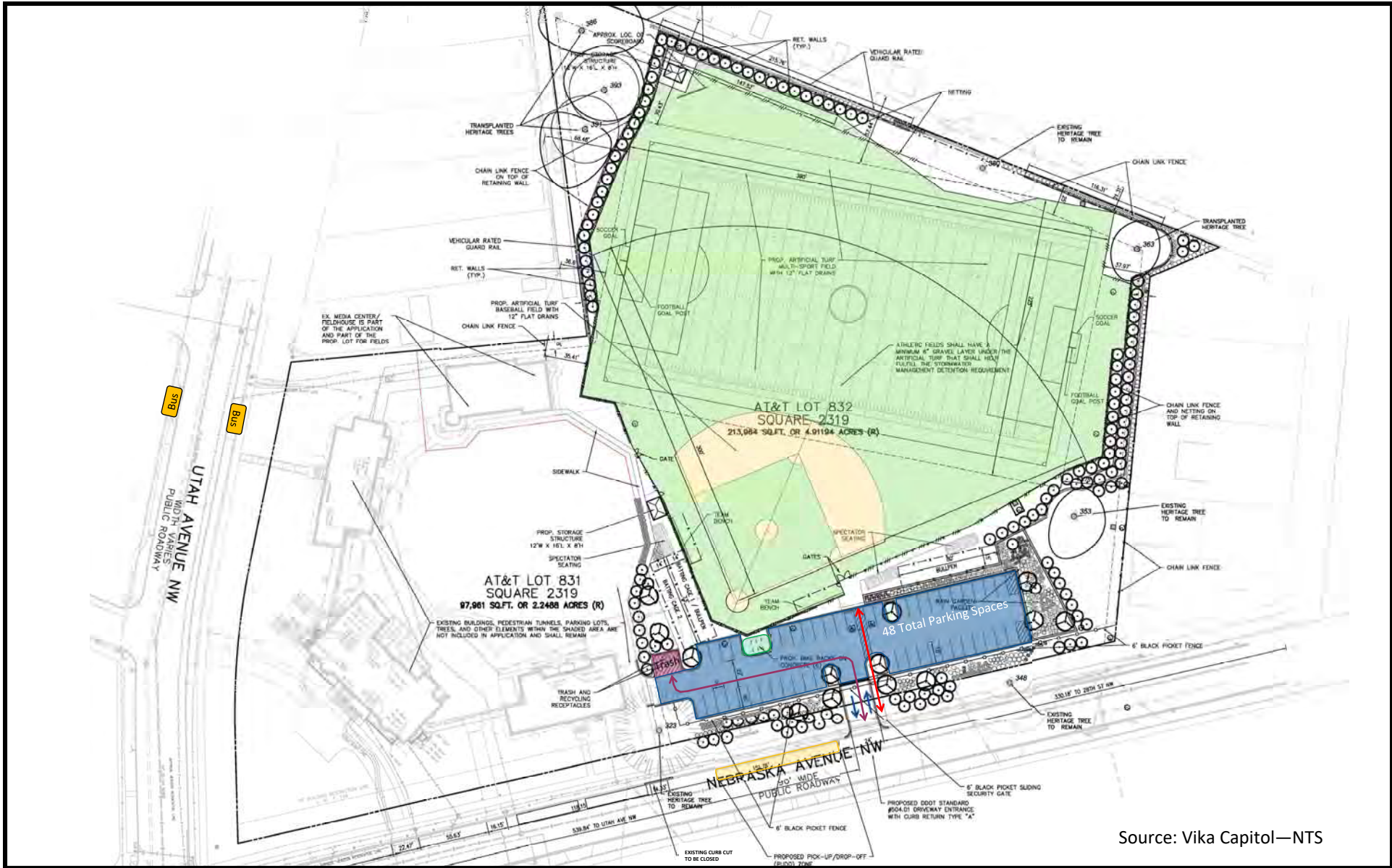






**Figure 9**  
2024 Background Traffic Forecasts





**Figure 10**  
Site Circula. on

- Inbound/Outbound Vehicle Access
- Trash Pick-Up Access
- Pedestrian Access
- Bus Metrobus Stop (M4)
- Short-Term Bicycle Parking
- Bus Pick-Up/Drop Off Zone (100' Maret Events Only)
- 5 Minute Pick-Up/Drop Off
- All Other Times

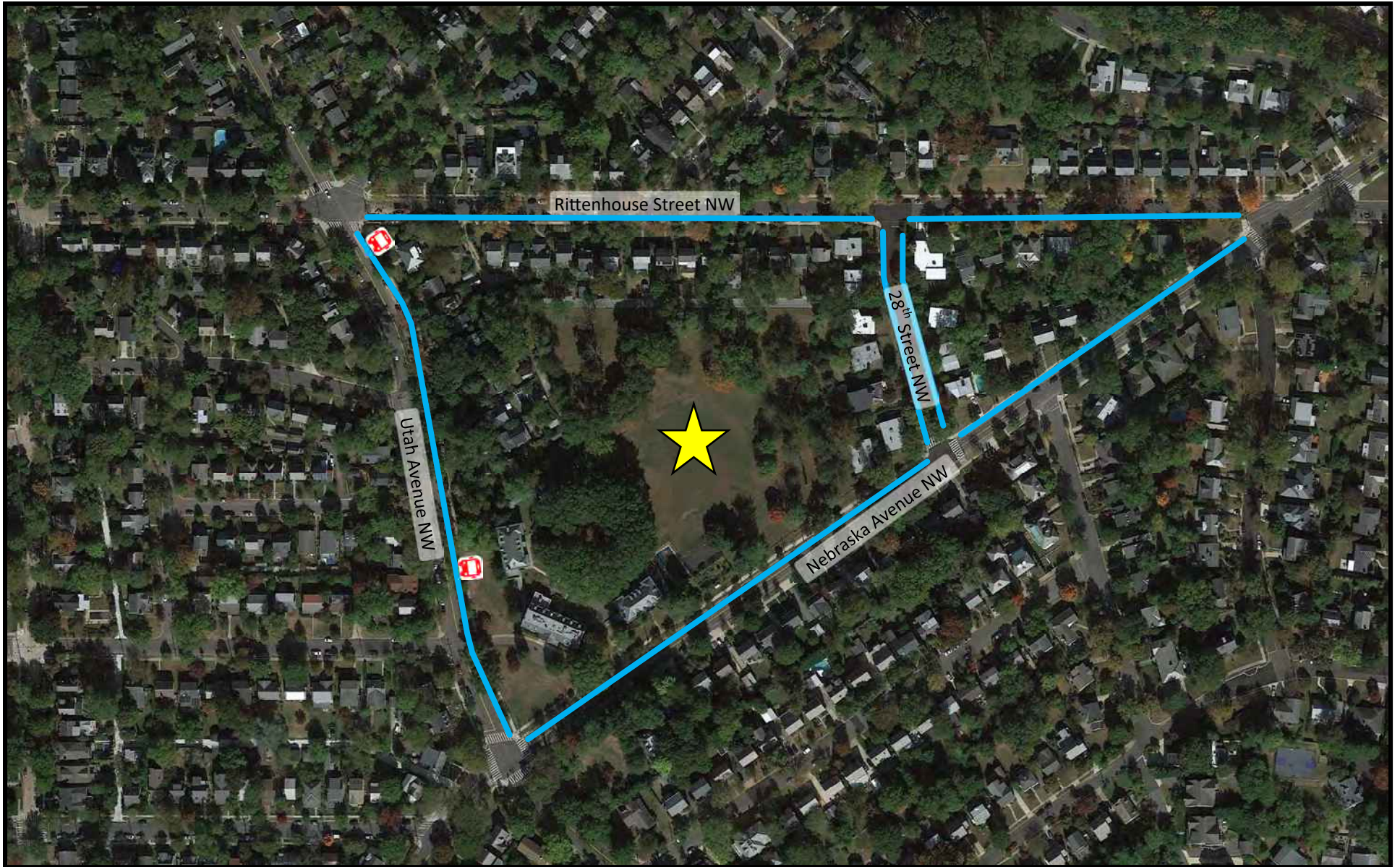


**NORTH**

**Maret Sports Fields  
Washington, DC**







**Figure 11A**  
 Exis. ng Curbside Management Plan

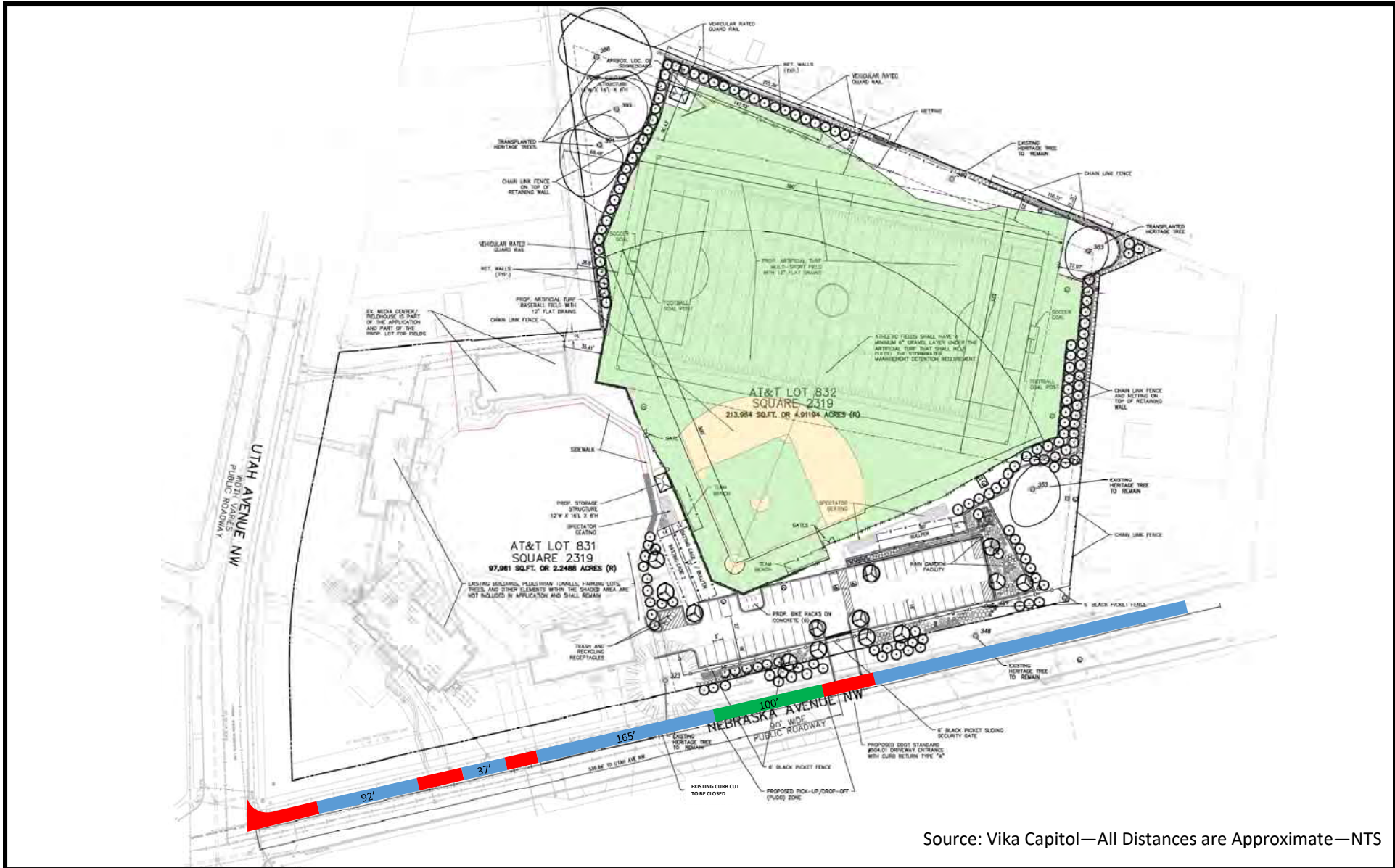
- ★ Site Location
- 🚌 Bus Stop
- Unrestricted Parking



**NORTH**

Maret Ball Fields  
 Washington, DC





Source: Vika Capitol—All Distances are Approximate—NTS

**Figure 11B**  
Proposed Curbside Management Plan

- No Parking
- Unrestricted Parking
- Bus Pick-Up/Drop Off Zone (Maret Events Only)  
5 Minute Pick-Up/Drop-Off All Other Times



**NORTH**

**Maret Ball Fields  
Washington, DC**





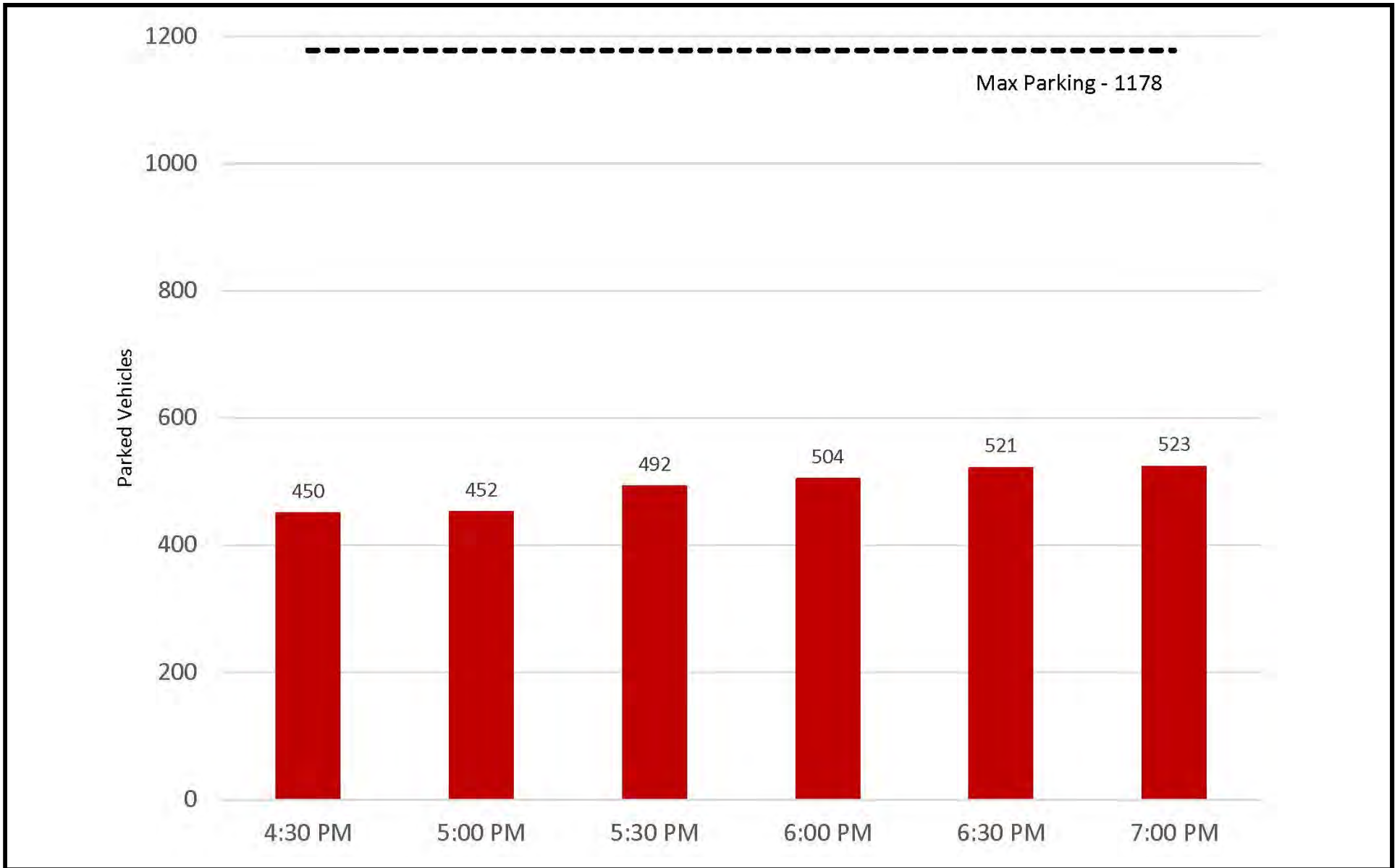
**Figure 12**  
On-Street Parking Inventory



NORTH

Maret Ball Fields  
Washington, DC

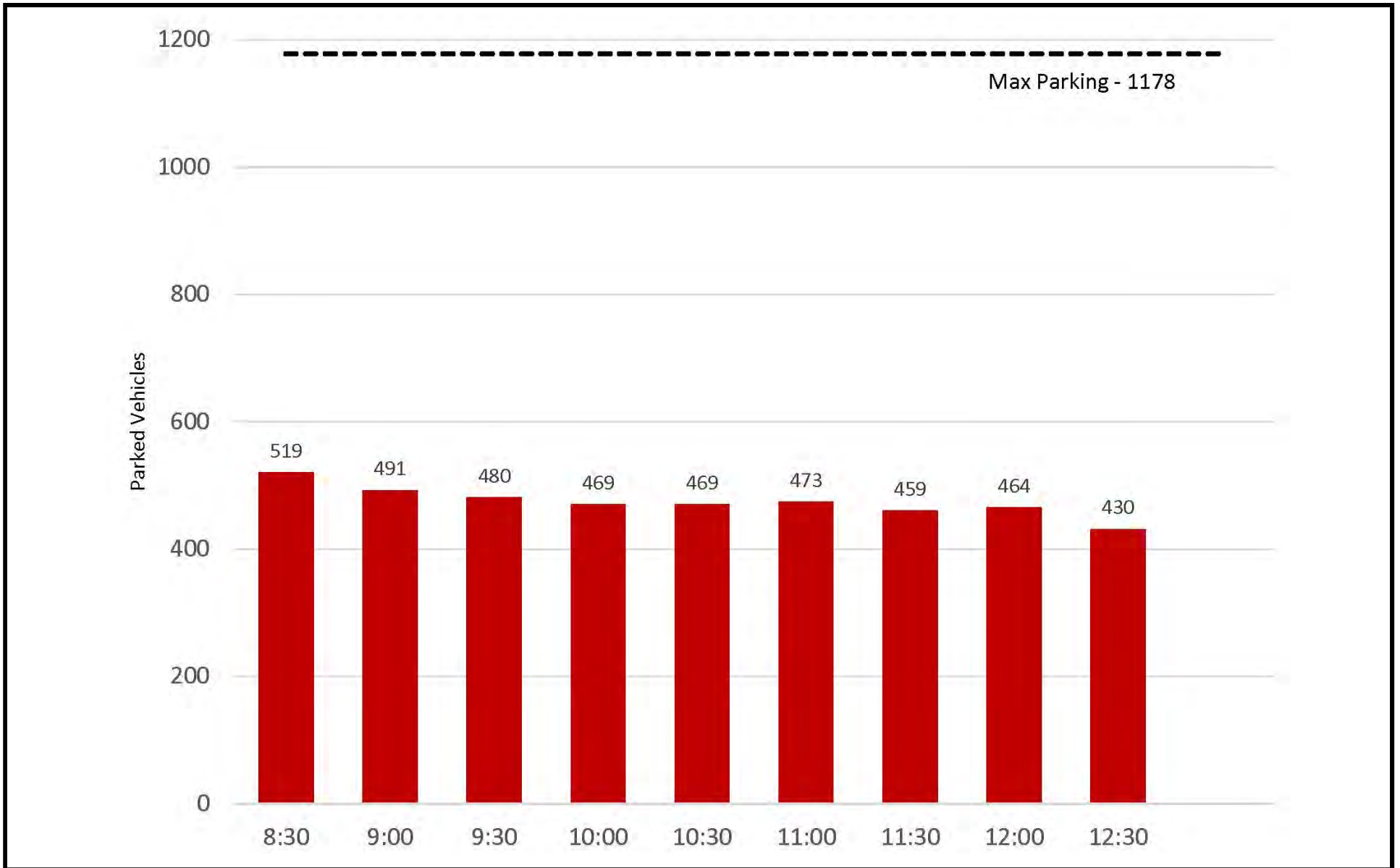




**Figure 13**  
Weekday (Wednesday) Parking Demand  
Spaces vs. Time of Day

M&T Ball Fields  
Washington, DC

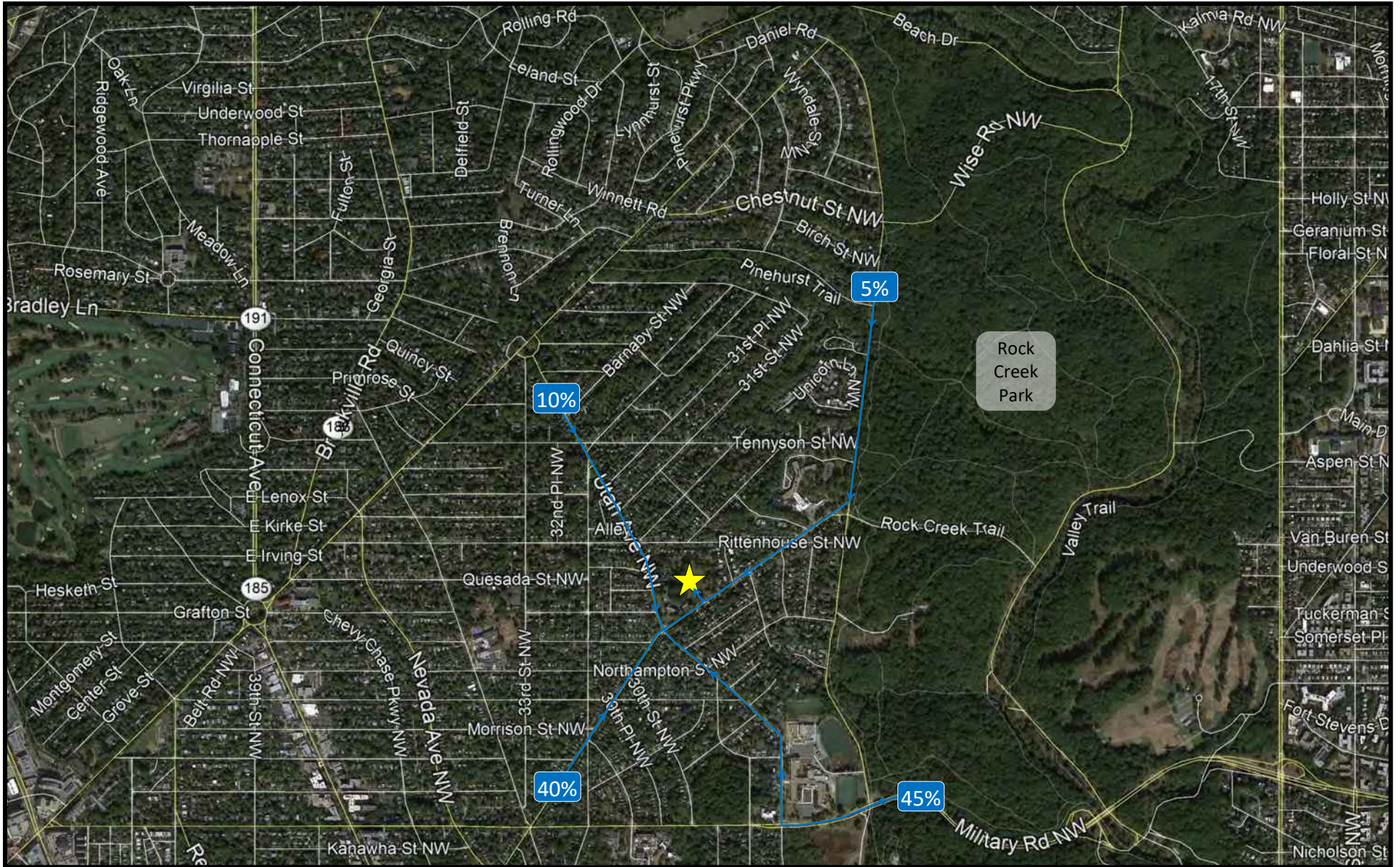




**Figure 14**  
Saturday Parking Demand  
Occupied Spaces vs. Time of Day

M&T Ball Fields  
Washington, DC





**Figure 15A**  
Site Trip Distributions—Inbound

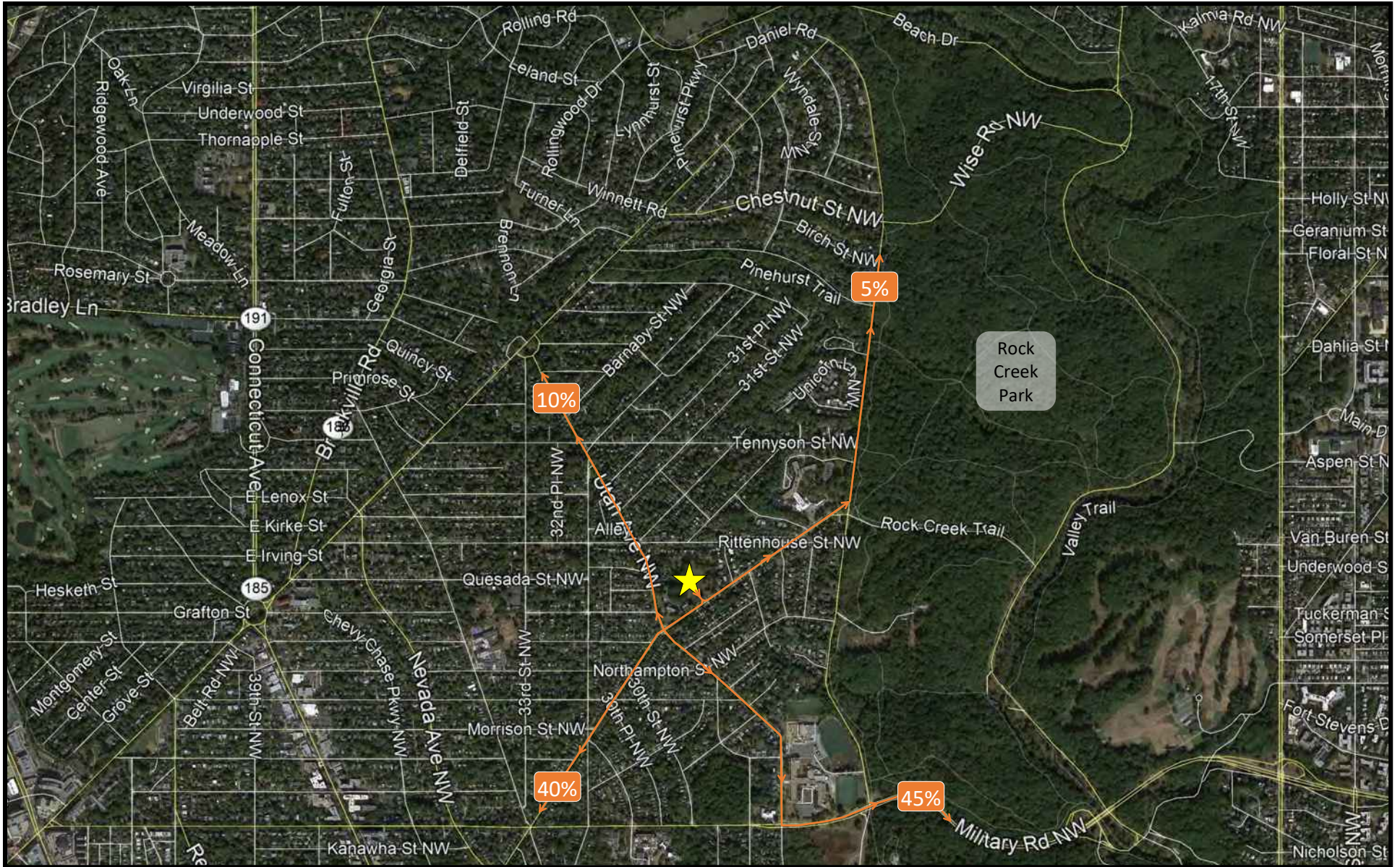
★ Site Location



**NORTH**

Maret Ball Fields  
Washington, DC





**Figure 15B**  
Site Trip Distributions—Outbound

★ Site Location



**NORTH**

**Maret Ball Fields  
Washington, DC**



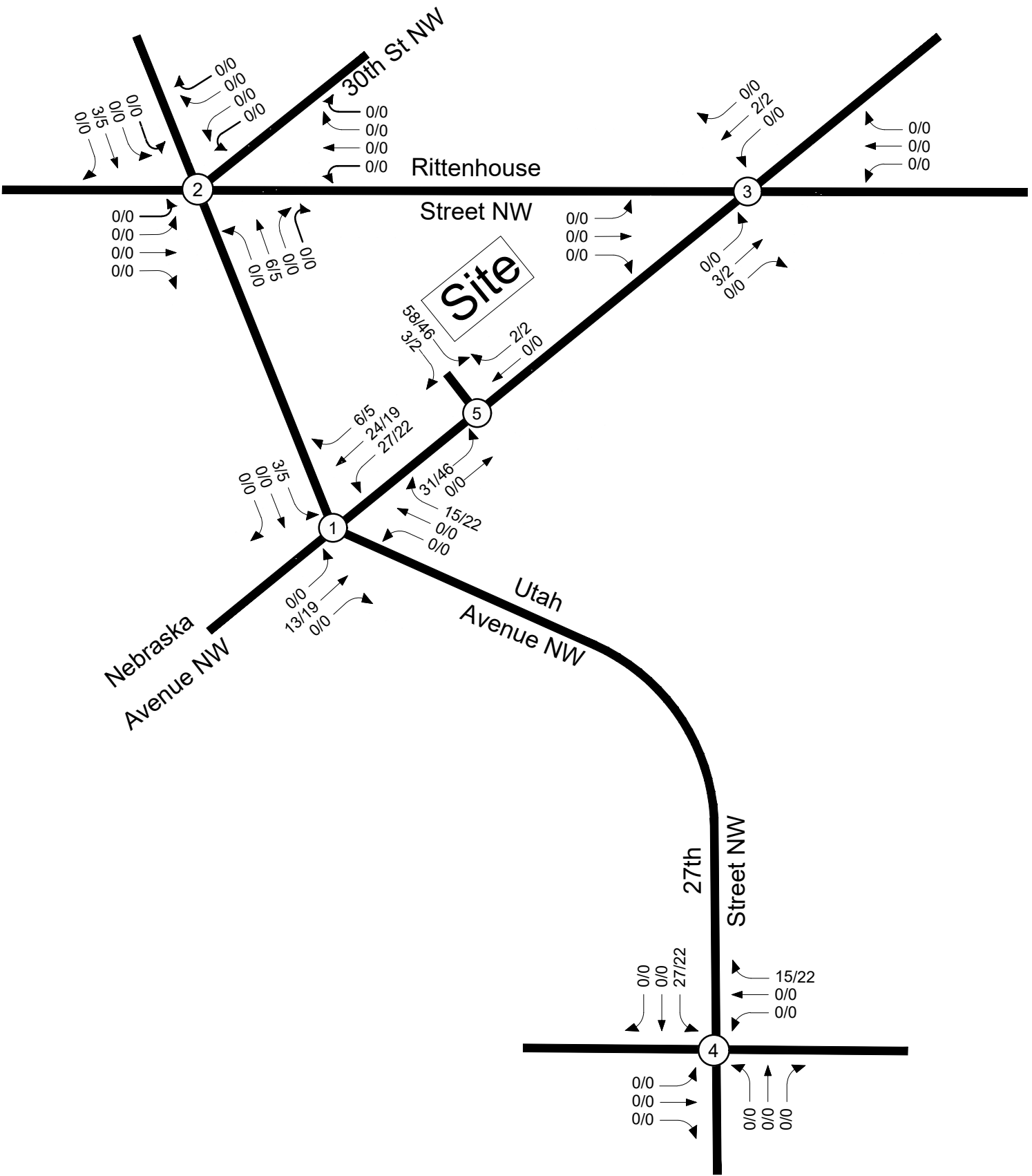


Figure 16  
Site Trip Volumes

  
NORTH  
Maret School  
Washington, DC





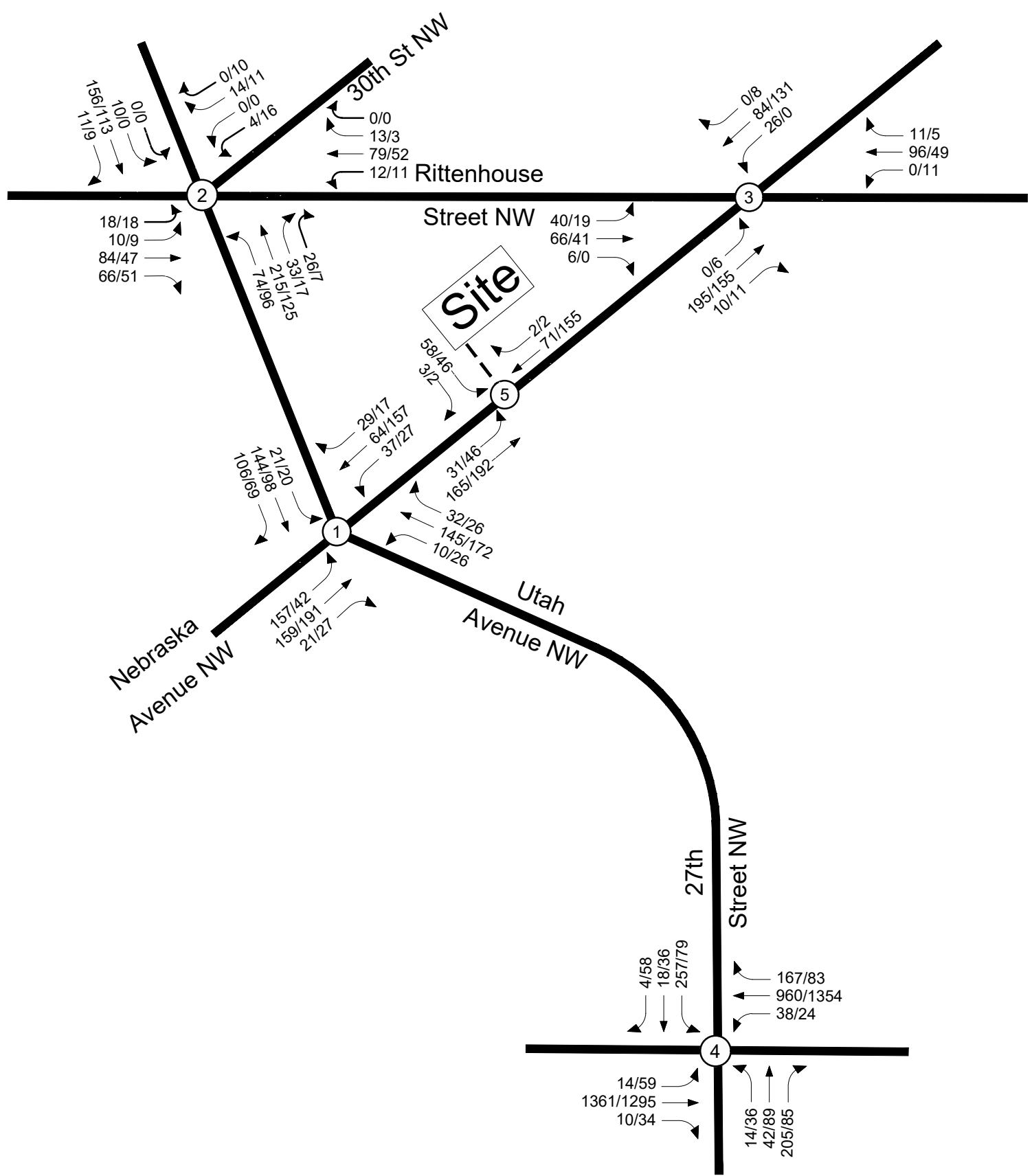


Figure 17  
2024 Total Future Traffic Forecasts



NORTH  
Maret School  
Washington, DC

