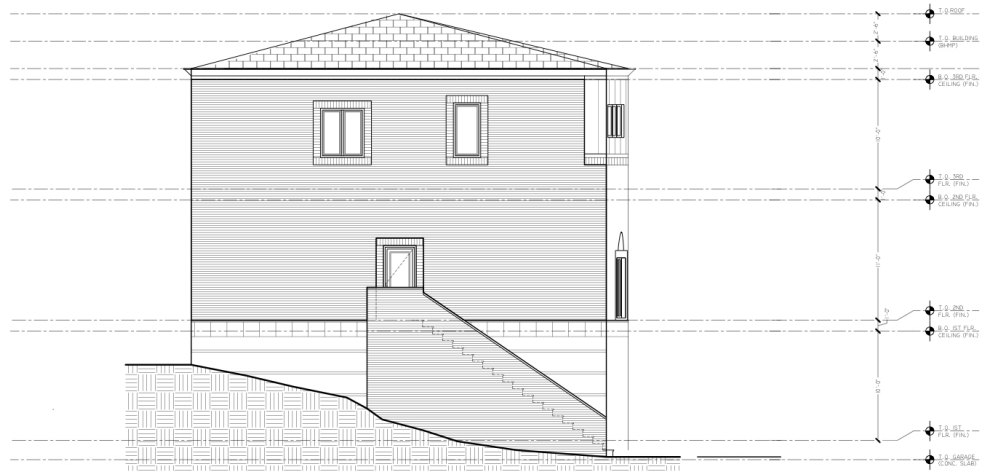




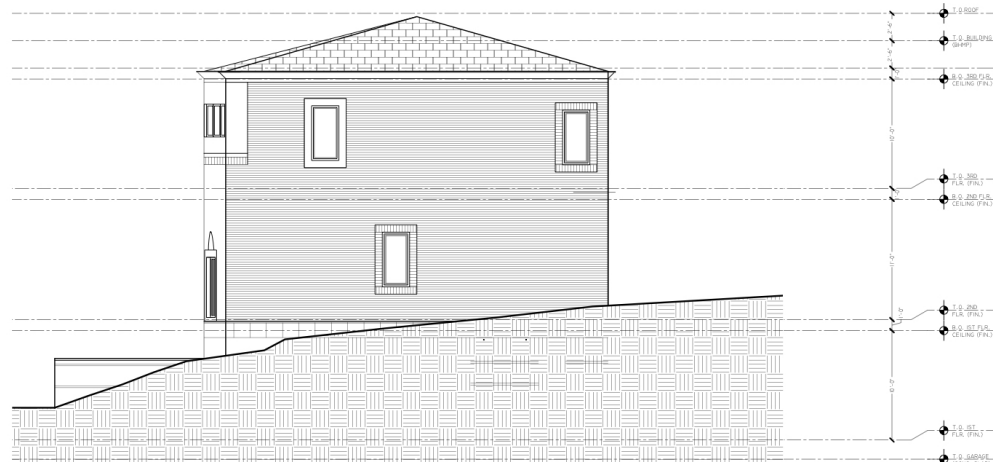
3 WEST ELEVATION (FRONT)
 A4.1 SCALE: 1/8" = 1'-0"



4
M-1
 NORTH ELEVATION (SIDE)
 SCALE: 1/8" = 1'-0"



1 EAST ELEVATION (REAR)
 AL.1 SCALE: 1/8" = 1'-0"



2 SOUTH ELEVATION (SOUTH)
 AL. 1 SCALE: 1/8" = 1'-0"