



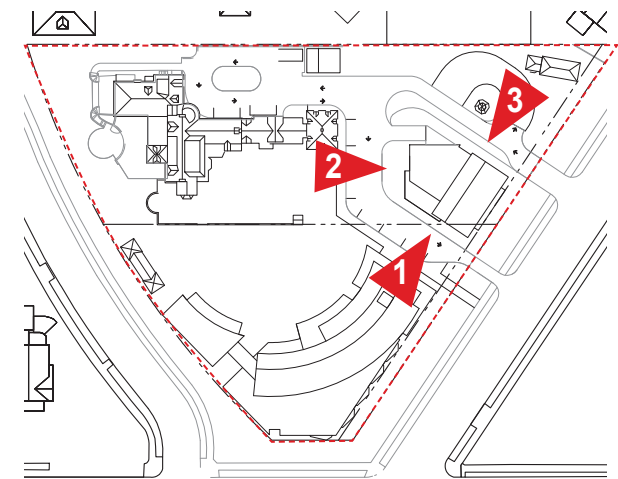
1. NORTH PAVILION SOUTH ELEVATION



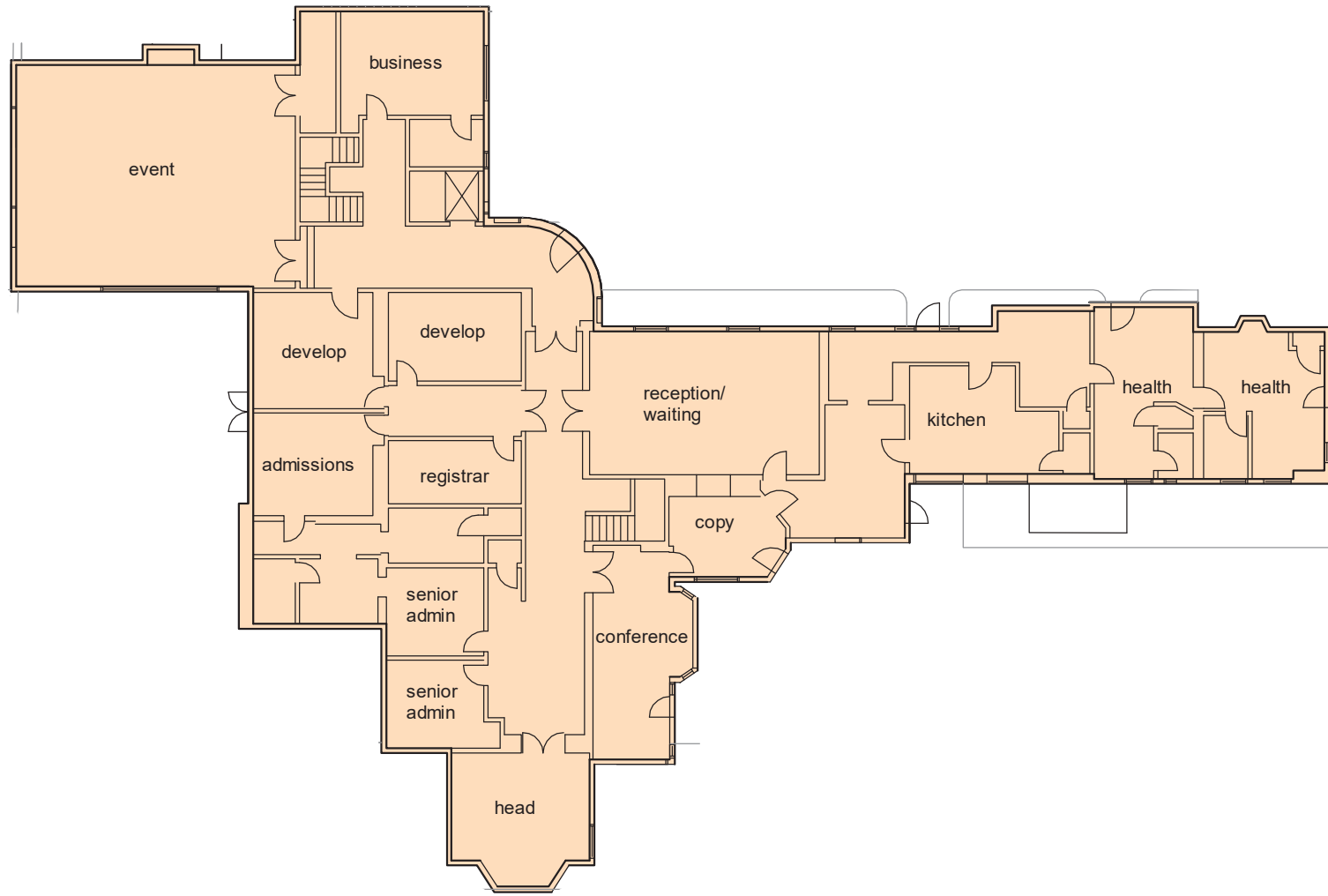
2. NORTH PAVILION WEST ELEVATION



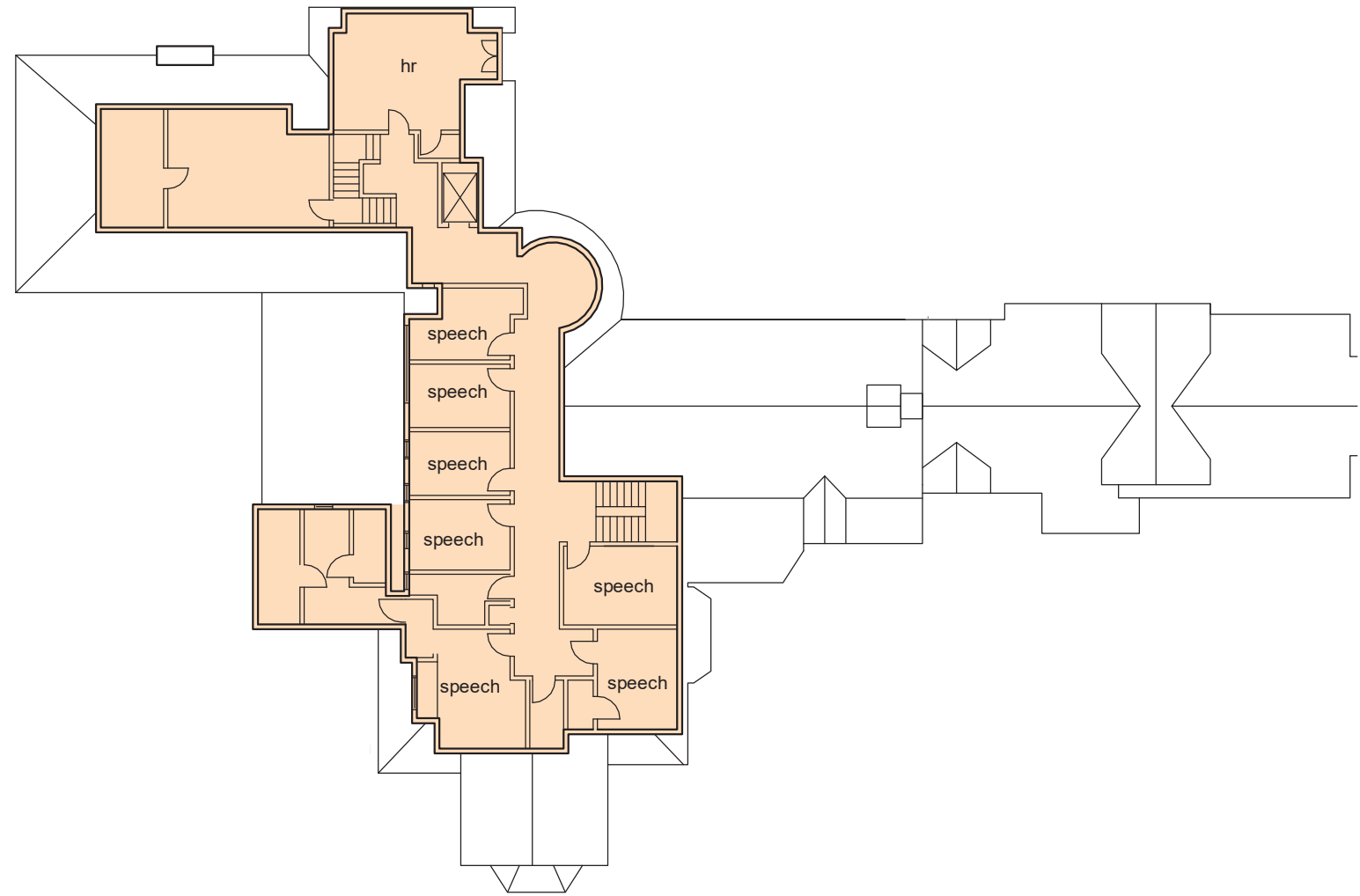
3. NORTH PAVILION EAST ELEVATION



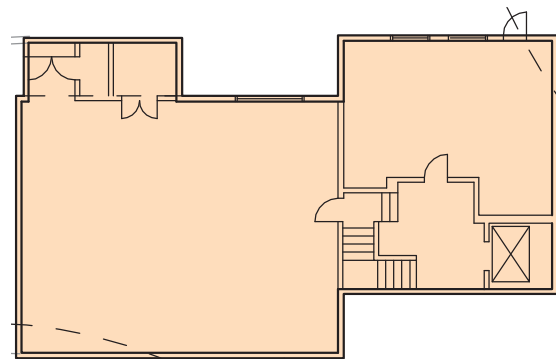
Images are provided to help illustrate design concepts, elements, and character and may be modified based on additional community input and final engineering and design.



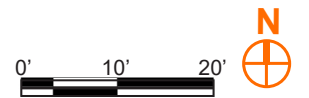
MAIN LEVEL FLOOR PLAN



UPPER LEVEL FLOOR PLAN



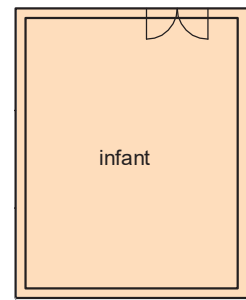
LOWER LEVEL FLOOR PLAN



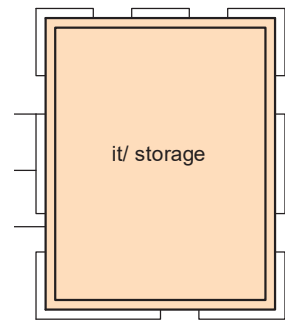
Images are provided to help illustrate design concepts, elements, and character and may be modified based on additional community input and final engineering and design.

shalom baranes associates

architects

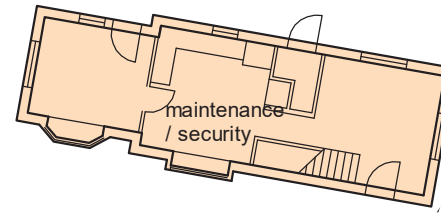


LEVEL 1

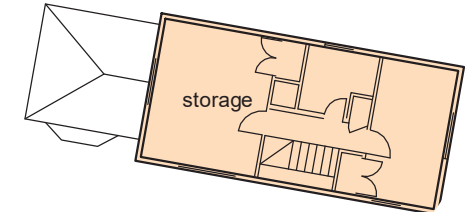


LEVEL 2

BRICK GARAGE

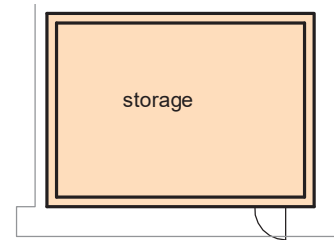


LEVEL 1

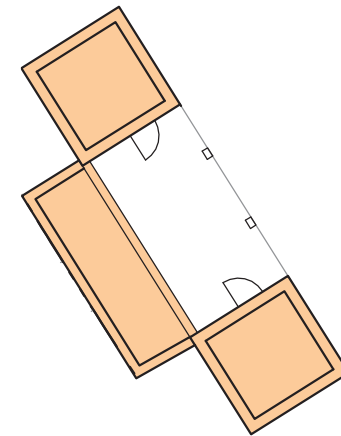


LEVEL 2

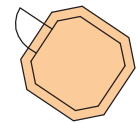
GATE HOUSE



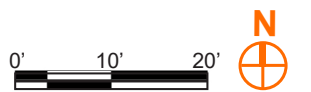
WOODEN GARAGE



POOL HOUSE



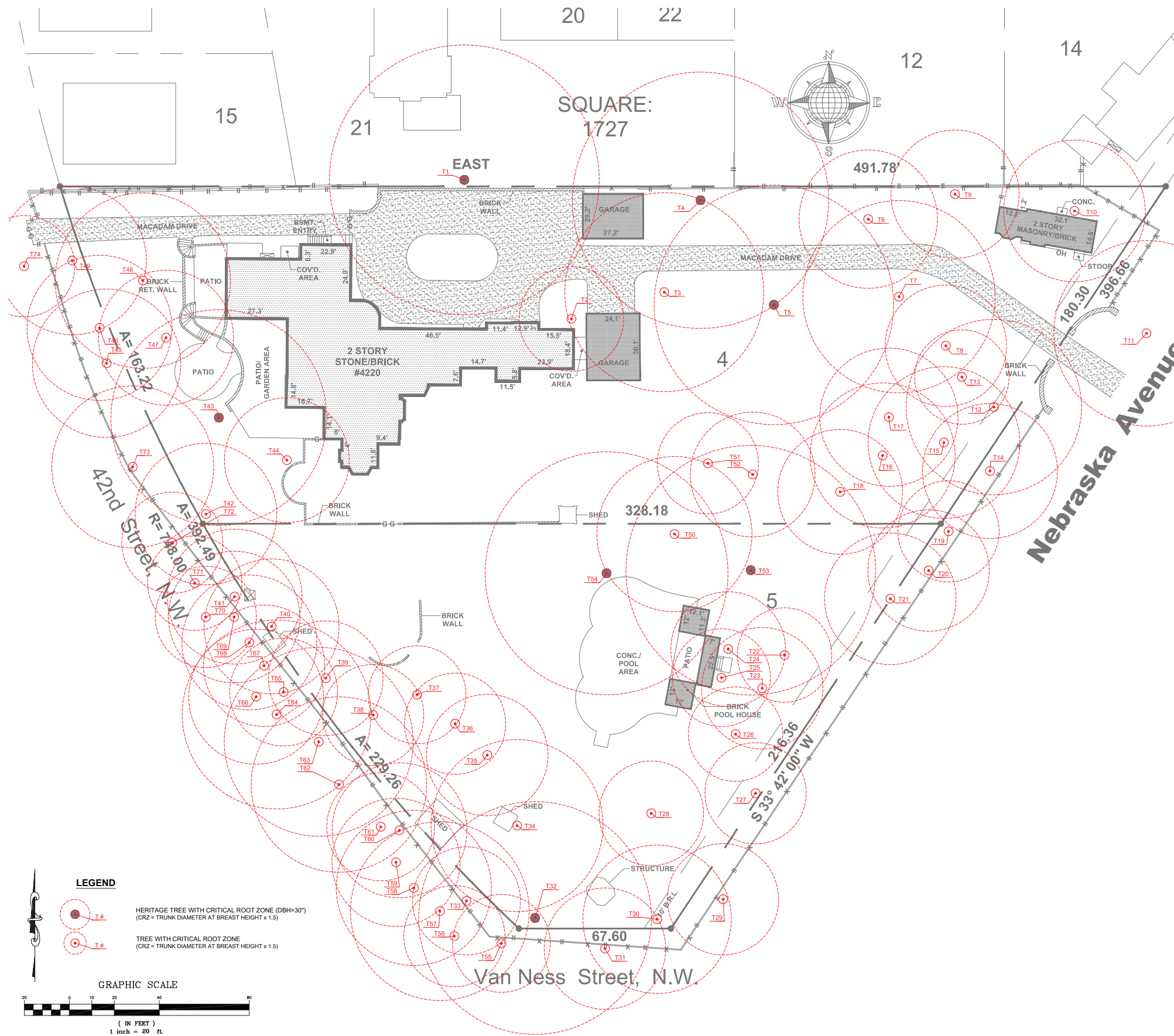
CUPOLA



Images are provided to help illustrate design concepts, elements, and character and may be modified based on additional community input and final engineering and design.

shalom baranes associates architects

AMT TREE SURVEY
JUNE 24, 2020



Project Name: 4220 Nebraska Avenue		Date: June 2020		Hazardous Tree Assessment							
Tree #	Botanical Name	Common Name	DBH	Trunk Circumference	Live Crown Ratio (0-100%)	Probability of Failure (1-3)	Size of Defective Part(s) (1-3)	Probability of Target Impact (1-3)	Subjective Risk Factors (0-2)	Total Risk Rating Score (3-30)	NOTES
1	<i>Acer saccharinum</i>	silver maple	40.0	125.7	70	2	3	3	1	9	Behind brick wall; compacted root zone (in pavement); twin leader; minor dieback
2	<i>Juniperus virginiana</i>	Eastern red cedar	15.5	48.7	80	1	1	3	1	6	Beside house; compacted root zone (in pavement); electrical equipment on trunk
3	<i>Fagus grandifolia</i>	American beech	29.5	92.7	85	1	1	3	0	5	Electrical equipment on trunk
4	<i>Quercus alba</i>	White oak	38.0	119.4	66	2	1	2	0	5	
5	<i>Quercus grandifolia</i>	American beech	35.5	111.5	90	2	3	2	1	8	Broken leader; electrical equipment
6	<i>Pinus strobus</i>	Eastern white pine	20.5	64.4	66	2.5	1	2	1	6.5	
7	<i>Fagus grandifolia</i>	American beech	28.5	89.5	85	1	1	2	0	4	
8	<i>Pinus strobus</i>	Eastern white pine	18.0	56.5	60	2.5	1	2	1	6.5	Slightly leaning
9	<i>Juniperus virginiana</i>	Eastern red cedar	19.0	59.7	50	2	2	3	1	8	Major exsurgent vines on trunk and in canopy
10	<i>Juniperus virginiana</i>	Eastern red cedar	21.0	66.0	45	2	2	3	1	8	Major poison ivy; small canopy
11	<i>Ulmus americana</i>	American elm	27.5	86.4	60	2.5	3	3	1	9.5	Broken leader; major wound; overhead wires
12	<i>Pinus strobus</i>	Eastern white pine	26.0	81.7	30	2	2	2	1	7	Broken limbs; dieback; English ivy
13	<i>Pinus strobus</i>	Eastern white pine	14.0	44.0	70	2	1	2	0	5	
14	<i>Pinus strobus</i>	Eastern white pine	20.0	62.8	66	2	1	2	1	6	Major poison ivy
15	<i>Cedrus atlantica</i>	Atlas cedar	22.5	70.7	40	1	1	1	0	3	
16	<i>Magnolia grandiflora</i>	Southern magnolia	21.5	67.5	70	1	1	1	0	3	
17	<i>Magnolia grandiflora</i>	Southern magnolia	20.5	64.4	80	1	1	1	0	3	Multiple trunk (7", 11.5", 15.5")
18	<i>Juniperus virginiana</i>	Eastern red cedar	18.5	58.1	40	2	3	1	1	7	
19	<i>Magnolia grandiflora</i>	Southern magnolia	15.0	47.1	90	1	1	3	0	5	Slightly leaning
20	<i>Liriodendron tulipifera</i>	tulip poplar	18.0	56.5	45	2.5	2	2	1	7.5	Thin canopy; minor dieback; broken limbs
21	<i>Liriodendron tulipifera</i>	tulip poplar	19.5	61.3	50	2	2	2	1	7	Thin canopy; minor dieback; broken limbs
22	<i>Pinus strobus</i>	Eastern white pine	14.0	44.0	40	2	1	2	1	6	Thin canopy
23	<i>Pinus strobus</i>	Eastern white pine	18.0	56.5	60	1.5	1	2	1	5.5	
24	<i>Cupressus x leylandii</i>	Leyland cypress	17.0	53.4	85	1.5	2	3	0	6.5	
25	<i>Cupressus x leylandii</i>	Leyland cypress	14.5	45.6	75	1.5	1	3	0	5.5	
26	<i>Acer rubrum</i>	red maple	14.0	44.0	66	1	1	1	0	3	Cable bracing for adjacent tree
27	<i>Juniperus virginiana</i>	Eastern red cedar	15.0	47.1	50	2.5	3	2	1	8.5	Cable bracing for adjacent tree; girdled trunk
28	<i>Pinus strobus</i>	Eastern white pine	15.5	48.7	60	2	1	1	0	4	
29	<i>Pinus strobus</i>	Eastern white pine	16.5	51.8	30	2	2	3	1	8	Leaning; thin canopy; bamboo
30	<i>Quercus palustris</i>	pin oak	22.0	69.1	50	1	1	2	0	4	
31	<i>Quercus palustris</i>	pin oak	18.0	56.5	55	1	2	3	0	6	Beside fence
32	<i>Quercus rubra</i>	Northern red oak	34.5	108.4	15	3	3	2	2	10	Major pruning; fruiting bodies; dieback
33	<i>Quercus rubra</i>	Northern red oak	16.0	50.3	10	3	2	2	2	9	Major dieback; ivy
34	<i>Acer rubrum</i>	red maple	25.5	80.1	66	1.5	1	1	1	4.5	Multiple leaders in canopy; minor dieback
35	<i>Pinus strobus</i>	Eastern white pine	18.0	56.5	66	1.5	1	1	1	4.5	
36	<i>Cupressus x leylandii</i>	Leyland cypress	15.0	47.1	66	3	1	2	1.5	7.5	Leaning; heaving root plate; major ivy
37	<i>Cupressus x leylandii</i>	Leyland cypress	14.5	45.6	66	2	2	2	1	7	Major ivy
38	<i>Juniperus virginiana</i>	Eastern red cedar	15.0	47.1	50	1	1	1	0	3	
39	<i>Tsuga canadensis</i>	Eastern hemlock	17.0	53.4	50	2	3	1	1	7	Multiple trunk (8", 10", 11.5"); dieback; thin canopy
40	<i>Pinus strobus</i>	Eastern white pine	20.0	62.8	55	2	1	1	1	5	
41	<i>Quercus phellos</i>	willow oak	20.0	62.8	20	3	3	1	2	9	Major dieback; major ivy
42	<i>Juniperus virginiana</i>	Eastern red cedar	21.0	66.0	70	1	2	1	0	4	Electrical
43	<i>Acer rubrum</i>	red maple	32.0	100.5	75	2	2	3	0	7	Electrical; girdled limb; pruning cuts; thin canopy; minor dieback
44	<i>Cupressus x leylandii</i>	Leyland cypress	18.5	58.1	80	1	2	3	0	6	Double trunk (10", 15.5")
45	<i>Pinus strobus</i>	Eastern white pine	22.0	69.1	40	2	2	2	1	7	
46	<i>Pinus strobus</i>	Eastern white pine	21.5	67.5	40	2	2	2	1	7	
47	<i>Juniperus virginiana</i>	Eastern red cedar	20.0	62.8	50	1	1	2	0	4	
48	<i>Pinus strobus</i>	Eastern white pine	26.0	81.7	55	2	2	2	1	7	Major vines; broken limbs
49	<i>Prunus serotina</i>	black cherry	22.0	69.1	50	2	3	2	1	8	Broken limbs; thin canopy; poor form
50	<i>Picea abies</i>	Norway spruce	23.0	72.3	30	2	2	3	0	7	Conduit, light, guy wire; bamboo
51	<i>Prunus serrulata</i>	flowering cherry	15.0	47.1	66	1	1	1	0	3	
52	<i>Prunus serrulata</i>	flowering cherry	18.5	58.1	60	1	1	1	0	3	Electrical
53	<i>Liriodendron tulipifera</i>	tulip poplar	37.0	116.2	70	1	2	2	1	6	Vines
54	<i>Juglans nigra</i>	black walnut	36.0	113.1	70	1	2	3	1	7	Wysteria vine; electrical
55	<i>Quercus rubra</i>	Northern red oak	14.5	45.6	50	3	2	3	1	9	Major dieback
56	<i>Ulmus americana</i>	American elm	15.0	47.1	70	1	1	3	0	5	
57	<i>Quercus rubra</i>	Northern red oak	26.5	83.3	50	4	3	3	2	12	Major wound at base; leaning
58	<i>Quercus rubra</i>	Northern red oak	23.0	72.3	50	2	2	3	0	7	Thin canopy
59	<i>Quercus rubra</i>	Northern red oak	19.0	59.7	50	2	2	3	1	8	Vines; thin canopy
60	<i>Quercus rubra</i>	Northern red oak	20.0	62.8	40	2	3	2	2	9	Major ivy; thin canopy; dieback
61	<i>Ulmus americana</i>	American elm	16.0	50.3	45	3	2	1	1	7	Major ivy; leaning
62	<i>Quercus rubra</i>	Northern red oak	26.0	81.7	50	2.5	2	2	1	7.5	Major vines; minor dieback; thin canopy
63	<i>Quercus rubra</i>	Northern red oak	28.0	88.0	40	2.5	2	1	1	6.5	Major vines; dieback; thin canopy
64	<i>Quercus rubra</i>	Northern red oak	28.0	88.0	40	2.5	2	2	1	7.5	Major vines; dieback; thin canopy
65	<i>Quercus rubra</i>	Northern red oak	16.0	50.3	30	3.5	3	3	1	10.5	
66	<i>Quercus rubra</i>	Northern red oak	20.0	62.8	50	2	2	3	0	7	Double trunk (10", 17.5")
67	<i>Quercus rubra</i>	Northern red oak	18.0	56.5	40	2	2	3	1	8	Ivy on trunk; thin canopy
68	<i>Quercus rubra</i>	Northern red oak	20.0	62.8	50	2	2	3	1	8	Leaning
69	<i>Prunus serotina</i>	black cherry	19.5	61.3	30	3	3	3	1	10	Dieback
70	<i>Quercus rubra</i>	Northern red oak	15.0	47.1	55	2	2	3	0	7	Dieback
71	<i>Quercus rubra</i>	Northern red oak	14.0	44.0	40	2	2	3	1	8	Major vines
72	<i>Quercus rubra</i>	Northern red oak	15.0	47.1	50	2	2	3	1	8	Major vines; dieback
73	<i>Quercus phellos</i>	willow oak	24.0	75.4	75	1	1	3	0	5	
74	<i>Quercus rubra</i>	Northern red oak	15.0	47.1	25	3	2	3	2	10	Major dieback, vines

EXHIBIT 1

shalom baranes associates

architects

TREE SURVEY

A27

Images are provided to help illustrate design concepts, elements, and character and may be modified based on additional community input and final engineering and design.



- KEY
- 1 LAWN PANEL
 - 2 PLAY SPACE
 - 3 PLAY SCULPTURE
 - 4 SCREENING PLANTINGS
 - 5 DDOT STANDARD SIDEWALK
 - 6 POOL HOUSE
 - 7 DECORATIVE PAVING
 - 8 TREE TIMELINE
 - 9 RETAINING WALL
 - 10 FENCE
 - 11 MAKERSPACE
 - 12 CLASSROOM COURTYARD
 - 13 EXISTING FREESTANDING WALL
 - 14 10' WIDE DDOT SHARED SIDEWALK
 - 15 SHORT TERM BICYCLE PARKING SPACES

Images are provided to help illustrate design concepts, elements, and character and may be modified based on additional community input and final engineering and design.



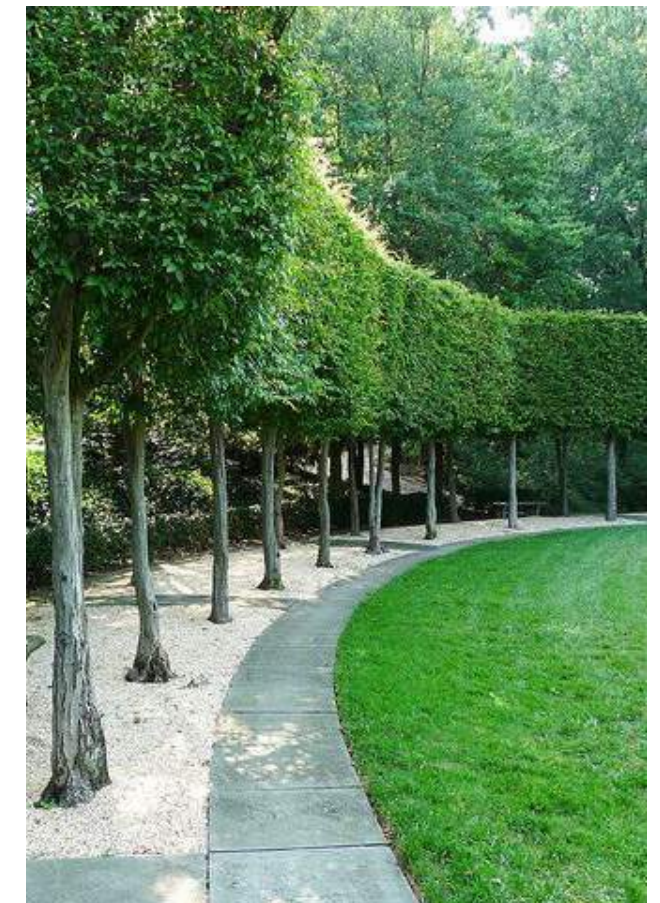
VAN NESS STREET NW

ParkerRodriguez shalom baranes associates

architects



Images are provided to help illustrate design concepts, elements, and character and may be modified based on additional community input and final engineering and design.



Images are provided to help illustrate design concepts, elements, and character and may be modified based on additional community input and final engineering and design.

EXISTING



VAN NESS STREET & 42ND STREET

PROPOSED



Note:
Graphics are provided to help illustrate design concepts, elements, and character and may be modified with final engineering and design.

VAN NESS STREET & 42ND STREET - SUMMER

PROPOSED



Note:
Graphics are provided to help illustrate design concepts, elements, and character and may be modified with final engineering and design.

VAN NESS STREET & 42ND STREET - WINTER

EXISTING



VAN NESS STREET & NEBRASKA AVENUE

PROPOSED



Note:
Graphics are provided to help illustrate design concepts, elements, and character and may be modified with final engineering and design.

VAN NESS STREET & NEBRASKA AVENUE - SUMMER