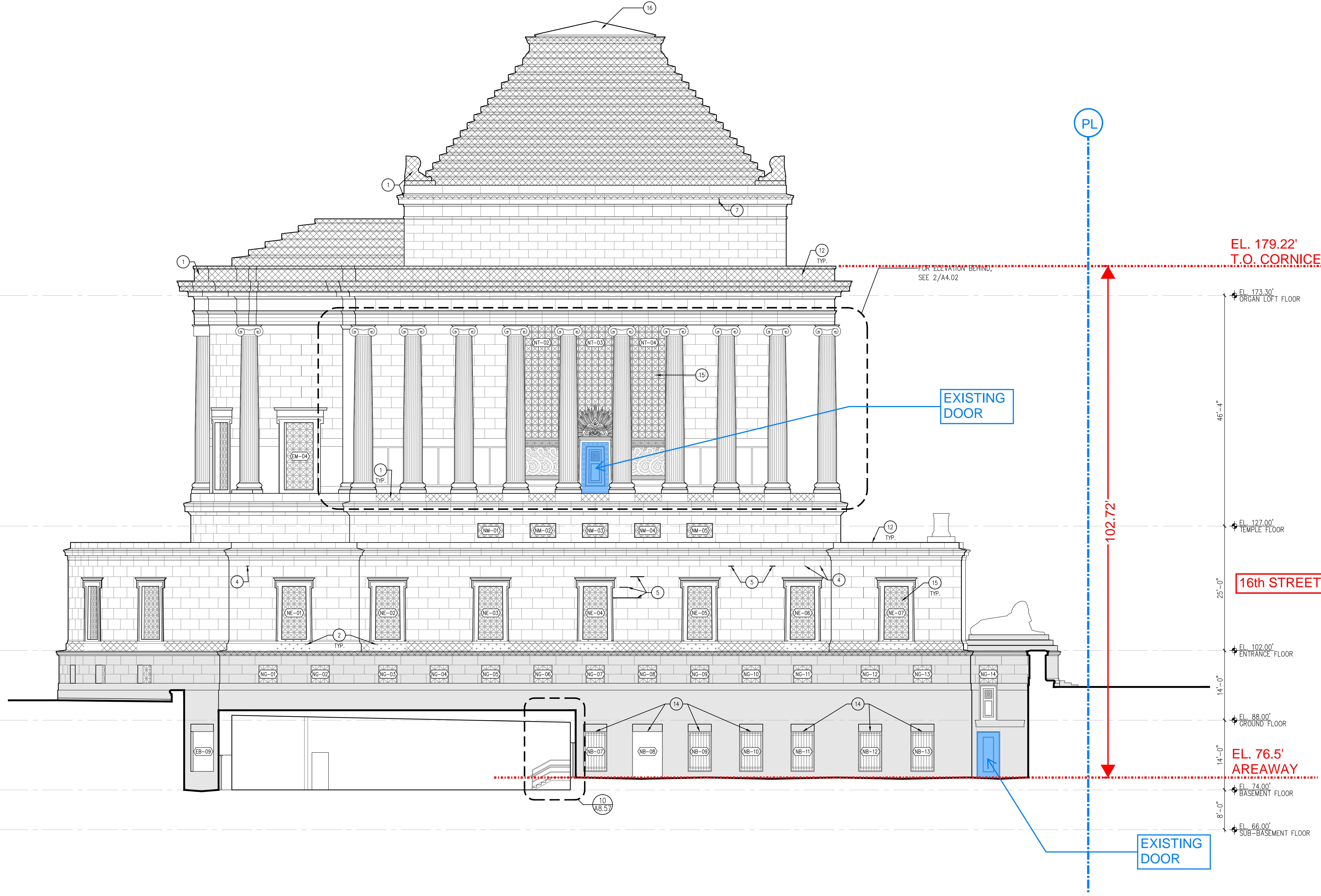


DCRA Exhibit F



1 NORTH ELEVATION
A4.02 1/8" = 1'-0"

OWNER
THE SUPREME COURT CLERK
SCOTTISH RTE, SOUTHERN JURISDICTION
1733 16TH STREET, NW
WASHINGTON, DC 20009
202-533-5379

ARCHITECT
HARTMAN-COX ARCHITECTS, LLP
1074 THOMAS JEFFERSON ST, NW
WASHINGTON, DC 20007
202-533-6446

GENERAL CONTRACTOR OF RECORD
DPR CONSTRUCTION
2941 FAIRVIEW PARK DR.
FALLS CHURCH, VA 22042
703-698-0100

HISTORIC PRESERVATION CONTRACTOR
GRUNLEY CONSTRUCTION
15029 SHADY GROVE ROAD, SUITE 500
ROCKVILLE, MD 20850
240-399-2000

STRUCTURAL ENGINEERS
KCE STRUCTURAL ENGINEERS, PC
1818 JEFFERSON PLACE, NW
WASHINGTON, DC 20036
202-833-8624

MECHANICAL ENGINEERS & CONTRACTOR
SHAPIRO & DUNCAN, INC.
14630 ROTHGEB DRIVE
ROCKVILLE, MD 20850
301-353-5139

ELECTRICAL ENGINEERS
DESIGNTECH, INC.
10410 KENSINGTON PARKWAY, #200
KENSINGTON, MD 20895
301-949-2608

ELECTRICAL CONTRACTOR
E.C. ERNST, INC.
1430 FITCHE MARLBORO ROAD
CAPITOL HEIGHTS, MD 20743
301-550-7776

SUBMISSION
01.26.15 100% CONSTRUCTION DOCUMENTS

HOUSE OF THE TEMPLE
1733 SIXTEENTH STREET NW
WASHINGTON DC

SEAL

KEY PLAN

DRAWING TITLE
NORTH ELEVATION

DATE
JANUARY 26, 2015

SCALE
1/8" = 1'-0"

16"

8"

4"

A4.02

Board of Zoning Adjustment
District of Columbia
2025-01-26-0000