

CODED NOTES

1 SIGNAGE FOR LOCATION OF ACCESSIBLE ENTRANCE, SEE 1/A9.60

DCRA EXHIBIT B

OWNER
THE SUPREME COURT CLIP 3P
SCOTTISH RTE, SOUTHERN JURISDICTION
1733 16TH STREET, NW
WASHINGTON, DC 20009
202-533-5279

ARCHITECT
HARTMAN-COX ARCHITECTS, LLP
1074 THOMAS JEFFERSON ST, NW
WASHINGTON, DC 20007
202-533-6446

GENERAL CONTRACTOR OF RECORD
DPR CONSTRUCTION
2841 FAIRVIEW PARK DR
FALLS CHURCH, VA 22042
703-698-0100

HISTORIC PRESERVATION CONTRACTOR
GRUNLEY CONSTRUCTION
15029 SHADY GROVE ROAD, SUITE 500
ROCKVILLE, MD 20850
240-399-2000

STRUCTURAL ENGINEERS
KCE STRUCTURAL ENGINEERS, PC
1818 JEFFERSON PLACE, NW
WASHINGTON, DC 20036
202-833-8624

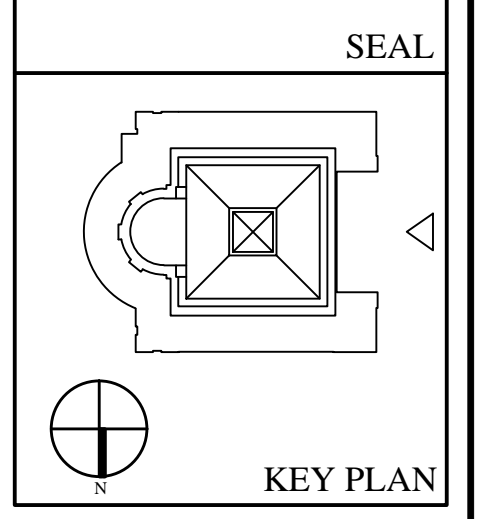
MECHANICAL ENGINEERS & CONTRACTOR
SHAPIRO & DUNCAN, INC
14630 ROTHGEB DRIVE
ROCKVILLE, MD 20850
301-535-2139

ELECTRICAL ENGINEERS
DESIGNTECH, INC
10410 KENSINGTON PARKWAY, #200
KENSINGTON, MD 20895
301-949-2608

ELECTRICAL CONTRACTOR
E.C. ERNST, INC
1430 RITCHIE MARLBORO ROAD
CAPITOL HEIGHTS, MD 20743
301-550-7776

SUBMISSION
01.26.15 100% CONSTRUCTION DOCUMENTS

HOUSE OF THE TEMPLE
1733 SIXTEENTH STREET NW
WASHINGTON DC

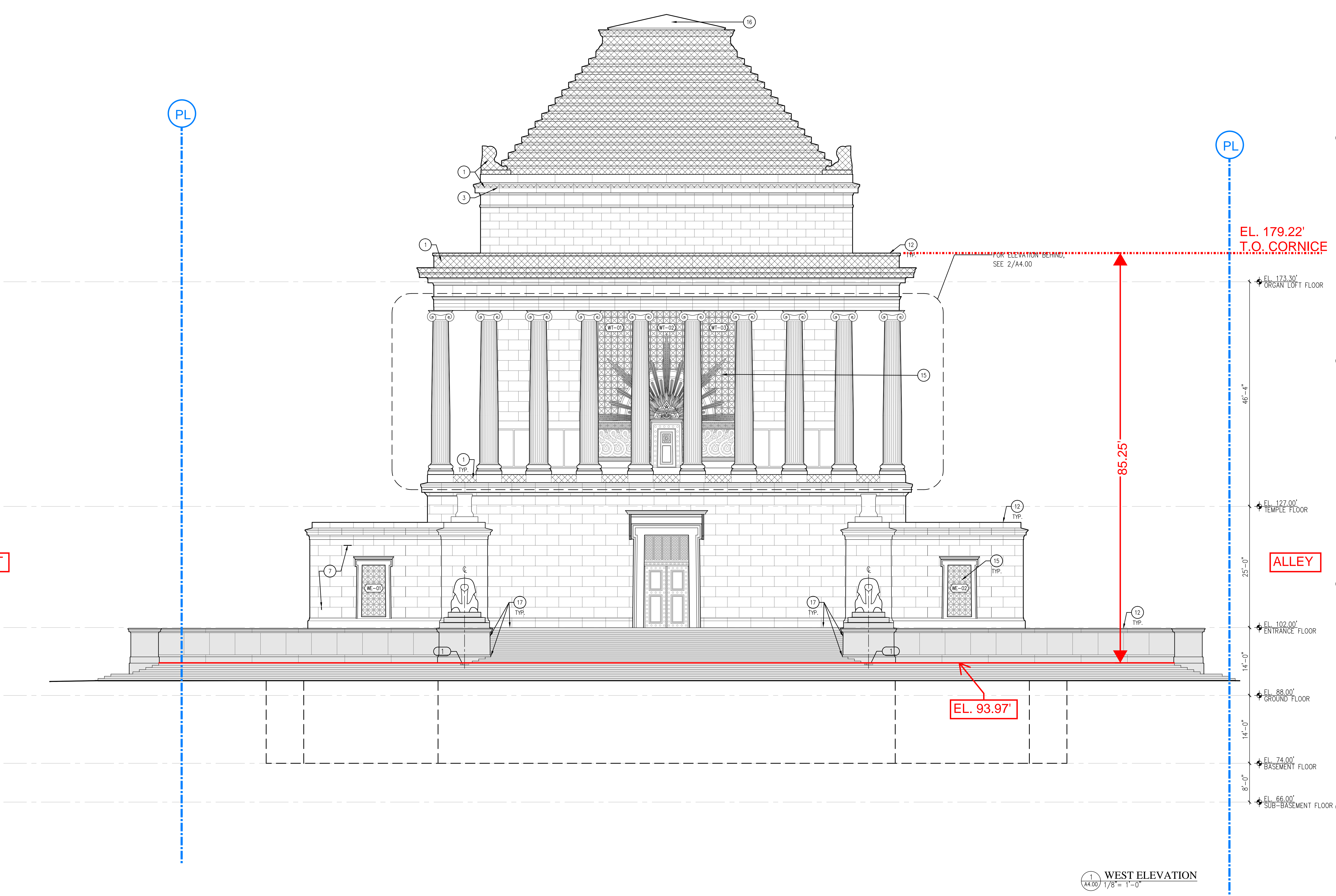


DRAWING TITLE
WEST ELEVATION

SCALE
1/8"=1'-0"

DATE
JANUARY 26, 2015

A4.00
Board of Zoning Adjustment
District of Columbia
DCAS, 400, 2015



WEST ELEVATION
1/8"=1'-0"