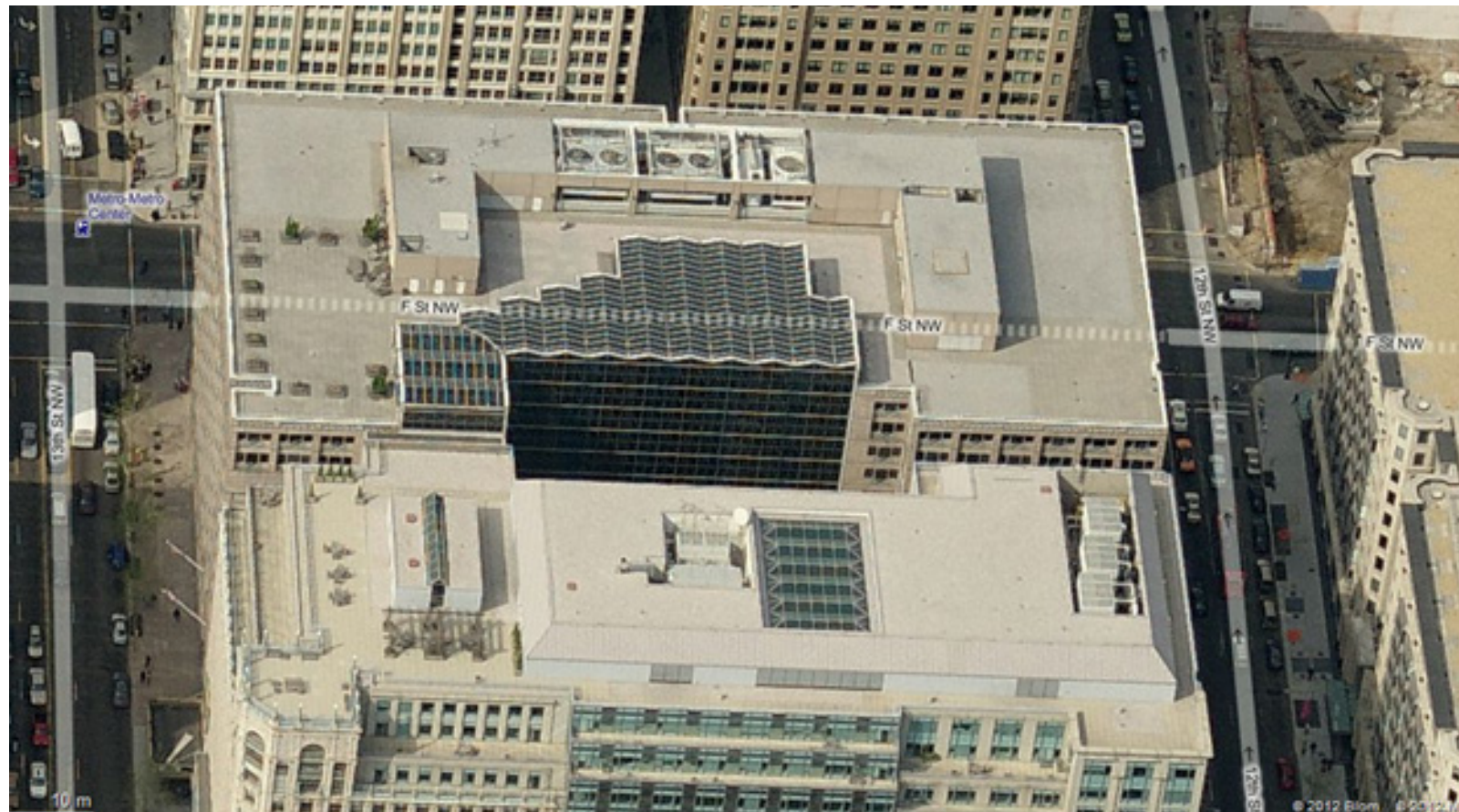


WILMERHALE BUILDING –
1875 PENNSYLVANIA AVE. NW





THE WORLD BANK - 1818 H STREET NW



COLUMBIA SQUARE - 555 13TH STREET NW

1331 F STREET NW

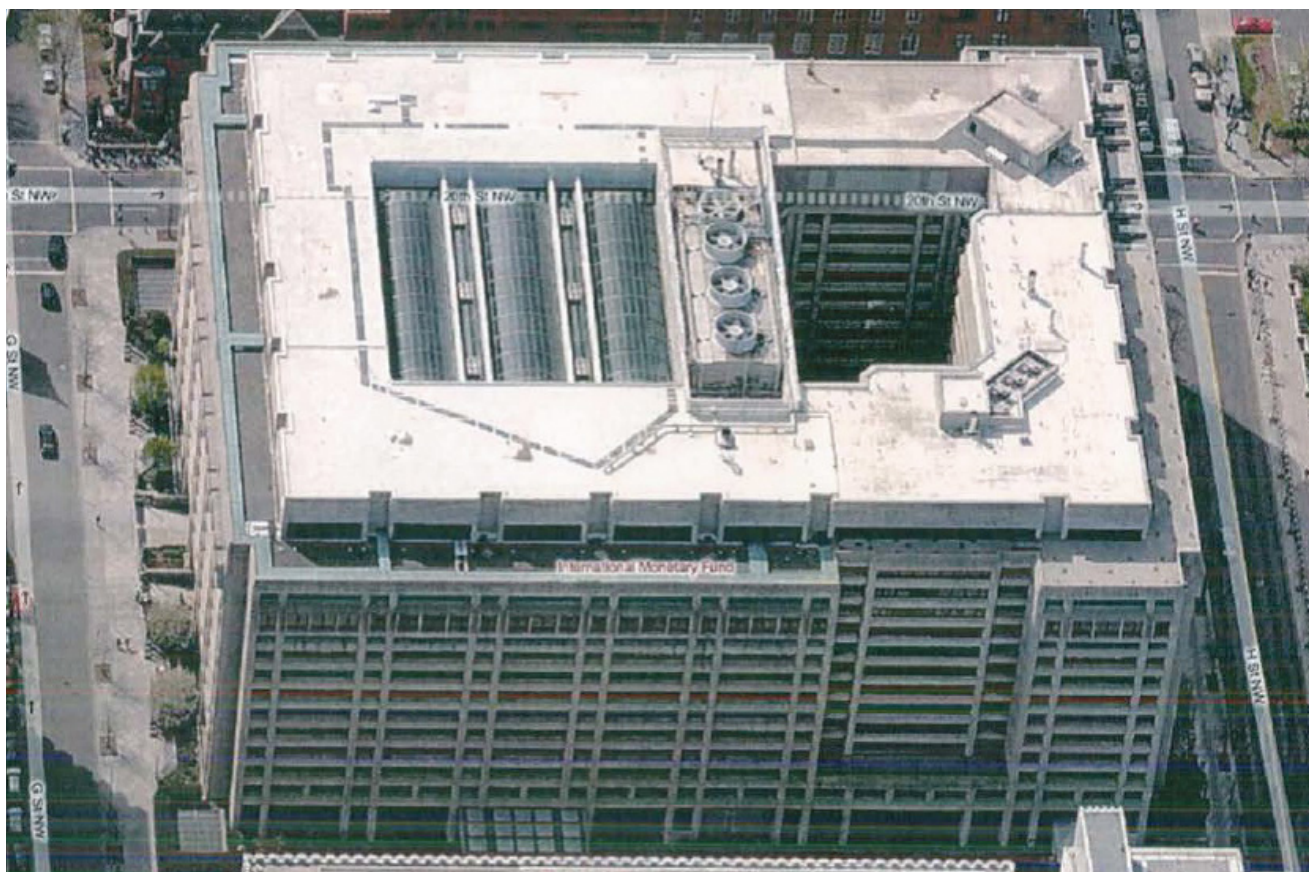


1625 EYE STREET NW





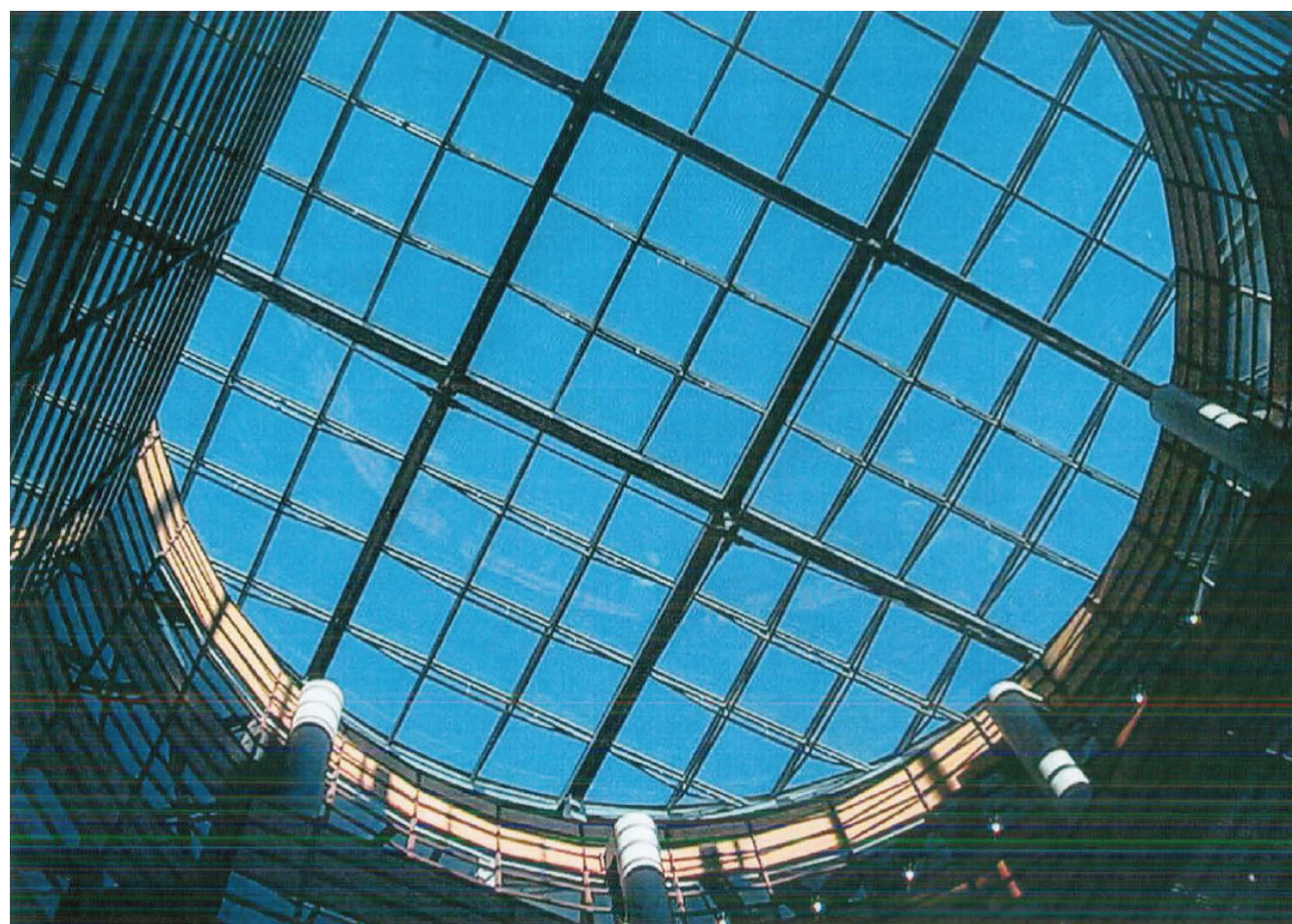
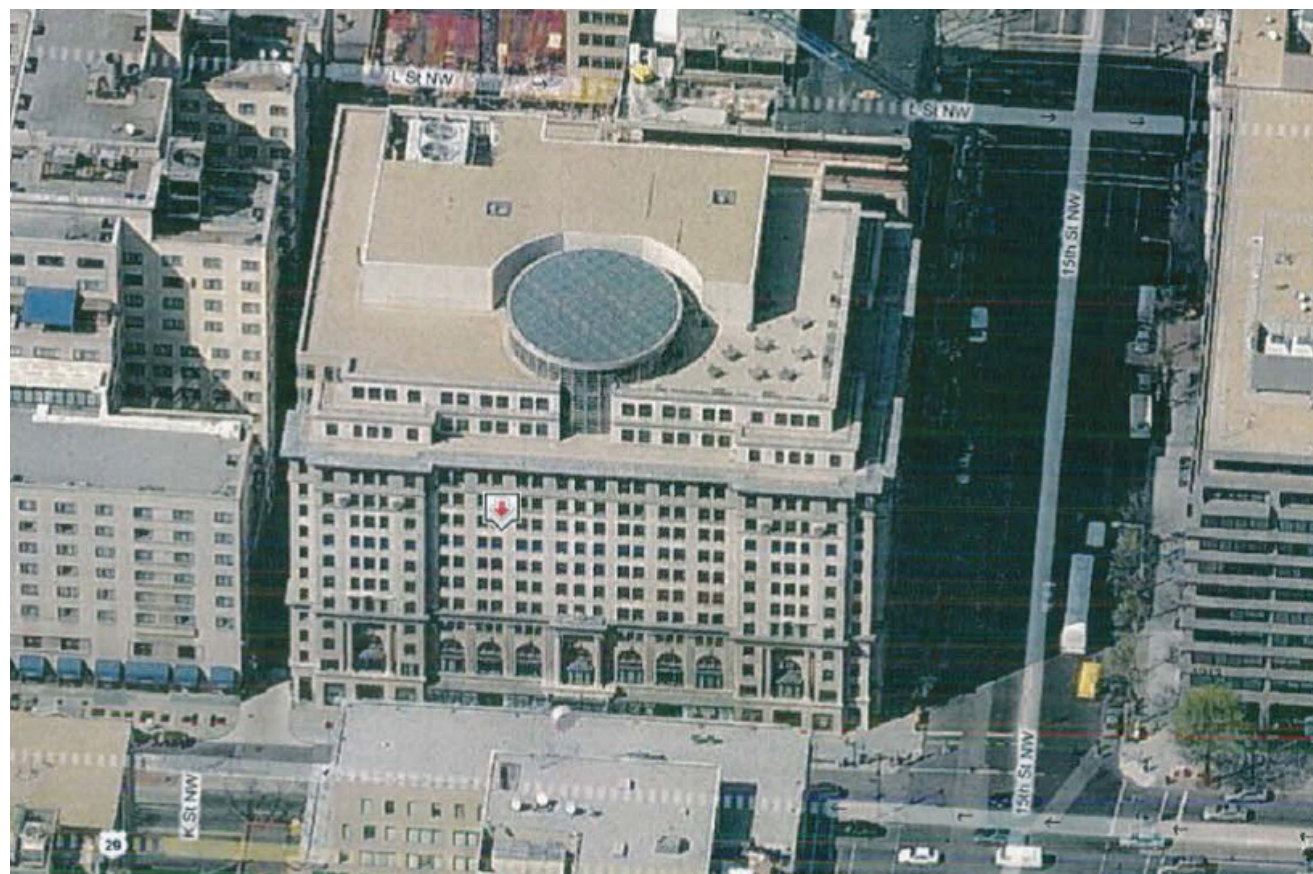
THE HOMER BUILDING - 601 13TH STREET NW



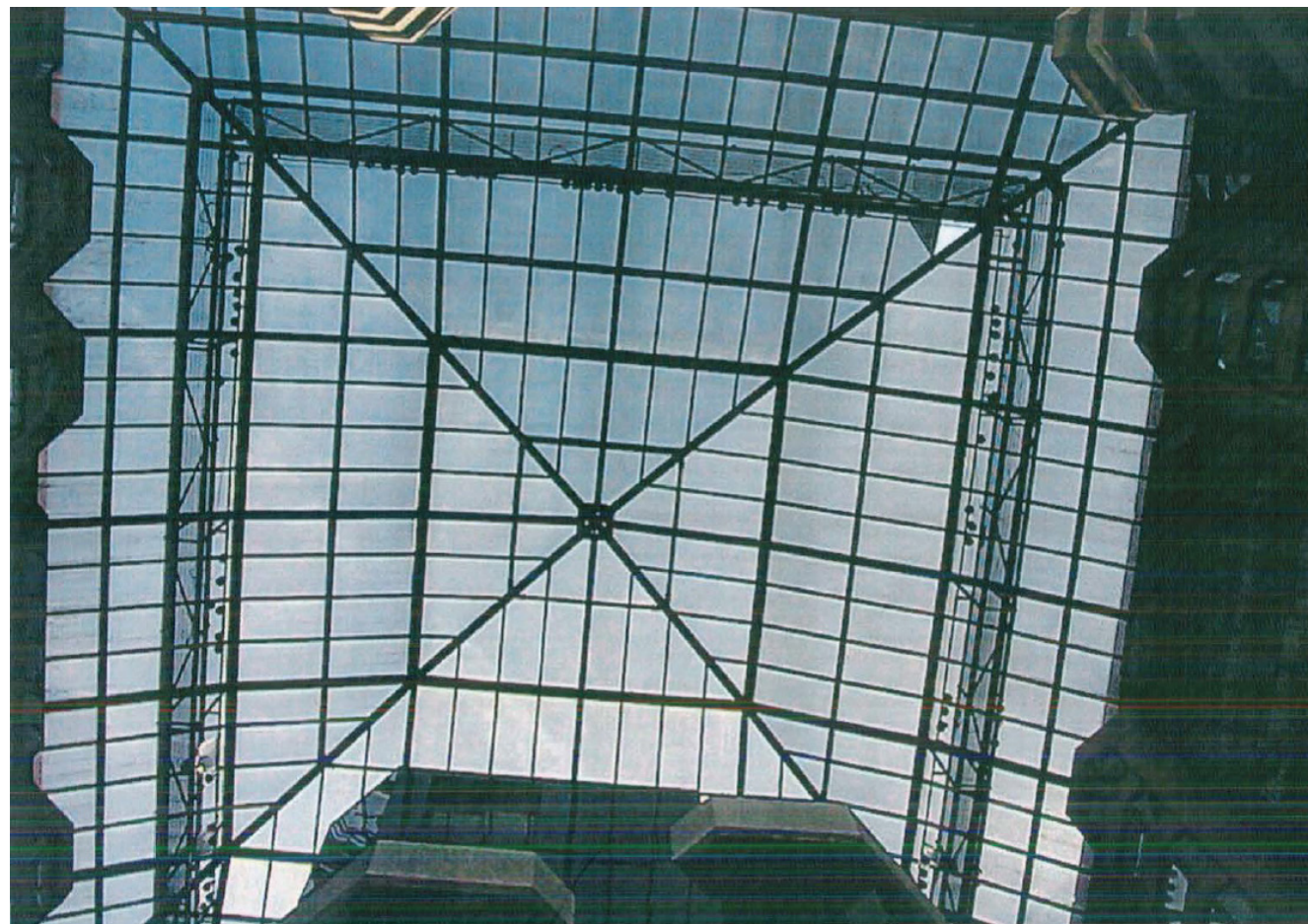
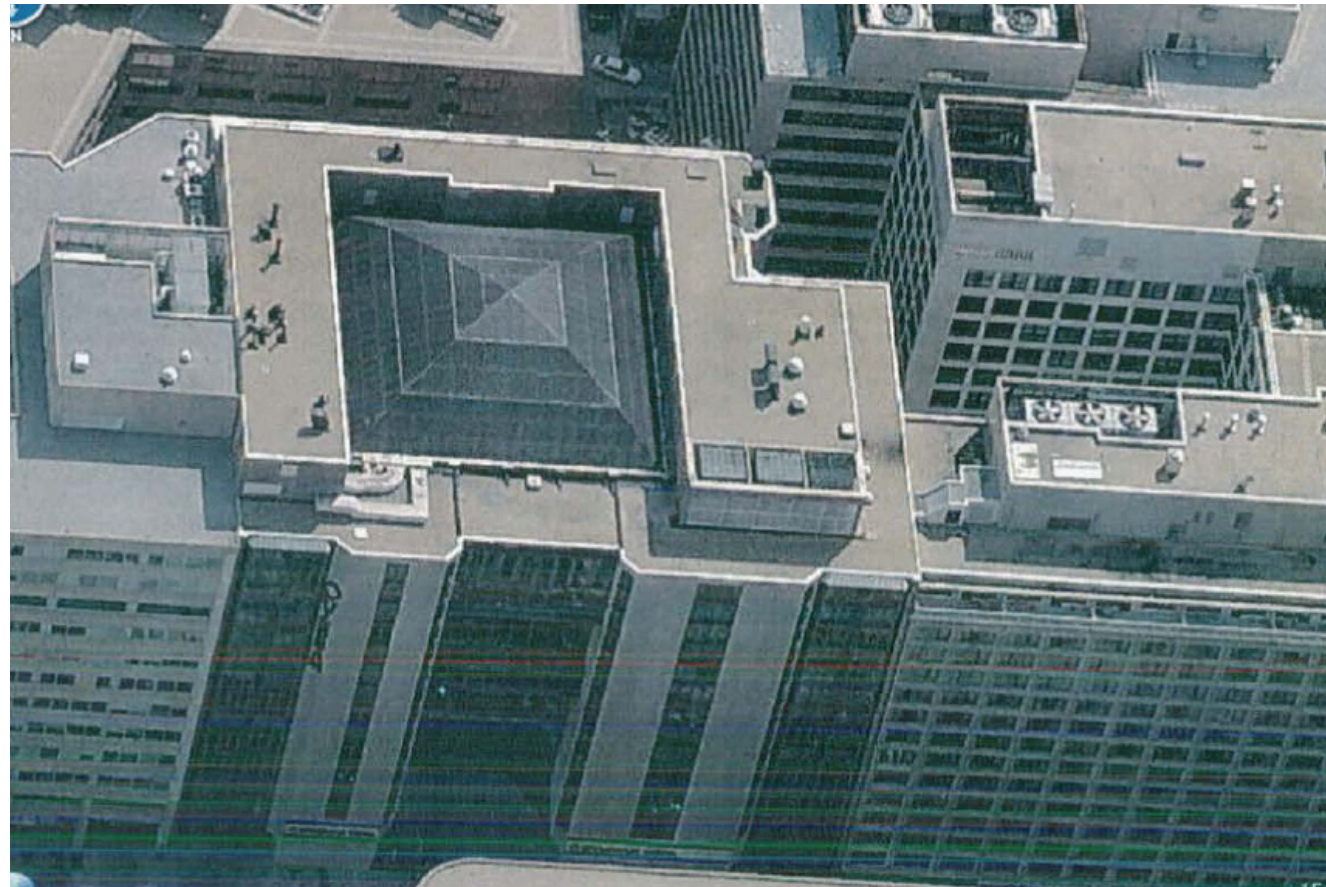
IMF - HQ I - 700 19TH STREET NW



IMF - HQ II



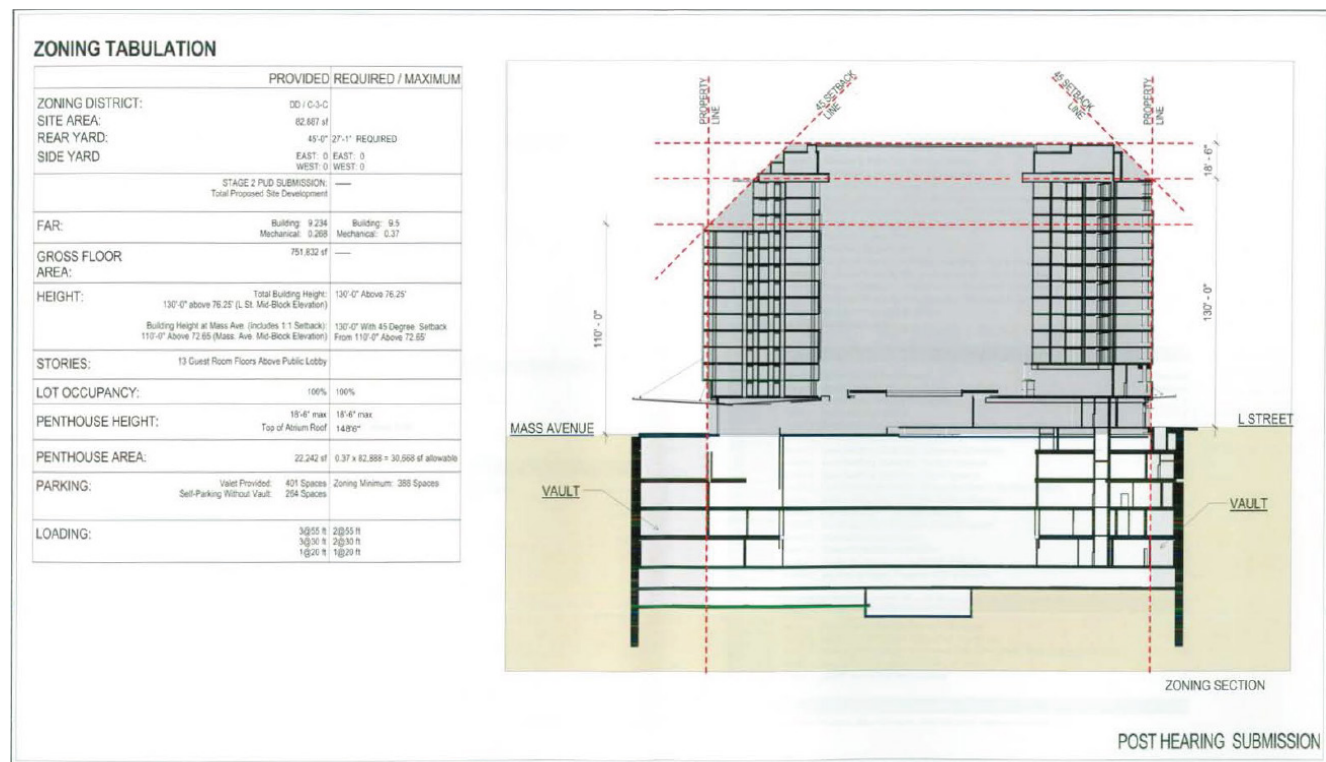
1501 K STREET NW



WESTIN DC - CITY CENTER - 1400 M STREET NW



555 12TH STREET NW



POST HEARING SUBMISSION



THE COOPER CARRY - TVS
COLLABORATIVE
3000 PIEDMONT ROAD, SUITE 200
ATLANTA, GEORGIA 30338-1000
404.261.0000 FAX 404.261.0271

PROJECT: WASHINGTON D.C. MARRIOTT MARQUIS
FILE: ZONING TABULATION / SECTION
SCALE: NTS DATE: 12-22-2008
REFERENCES: PROJECT NO: 20705
208498

SHEET NO:
PUD 370
A-004

WASHINGTON DC MARRIOTT MARQUIS-
CONVENTION CENTER HOTEL

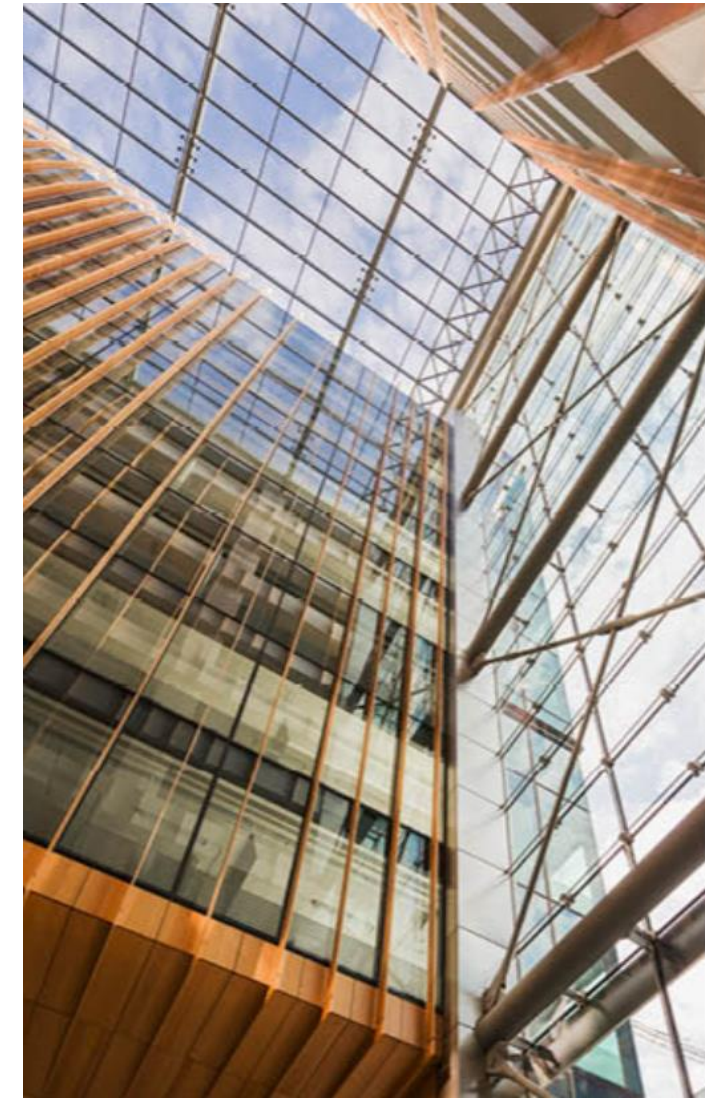
2000 L STREET NW

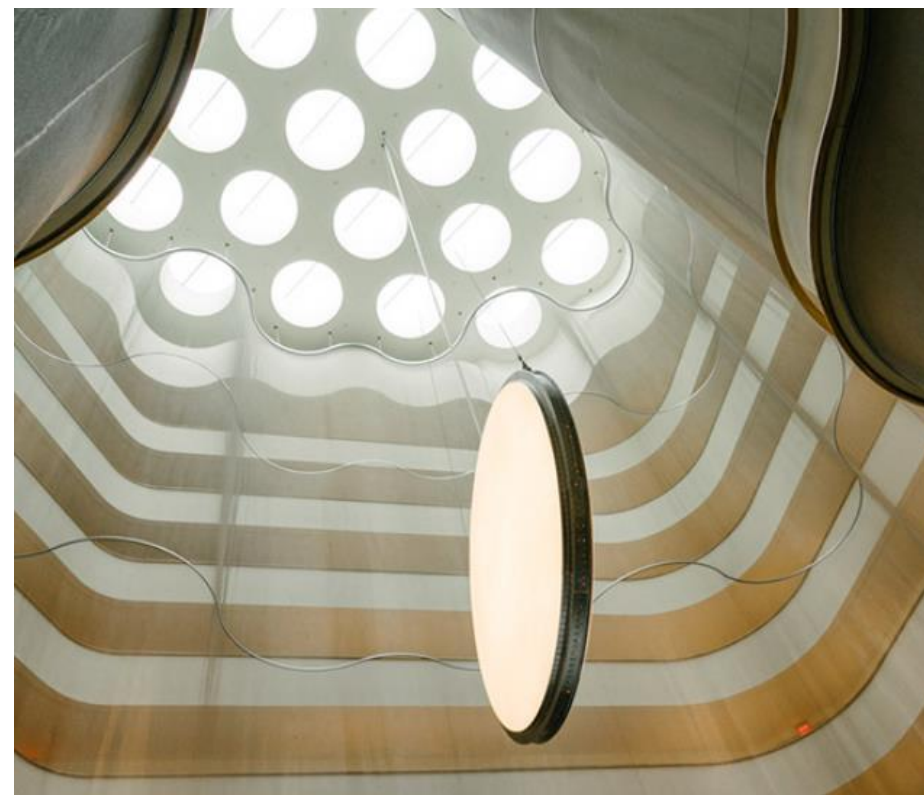
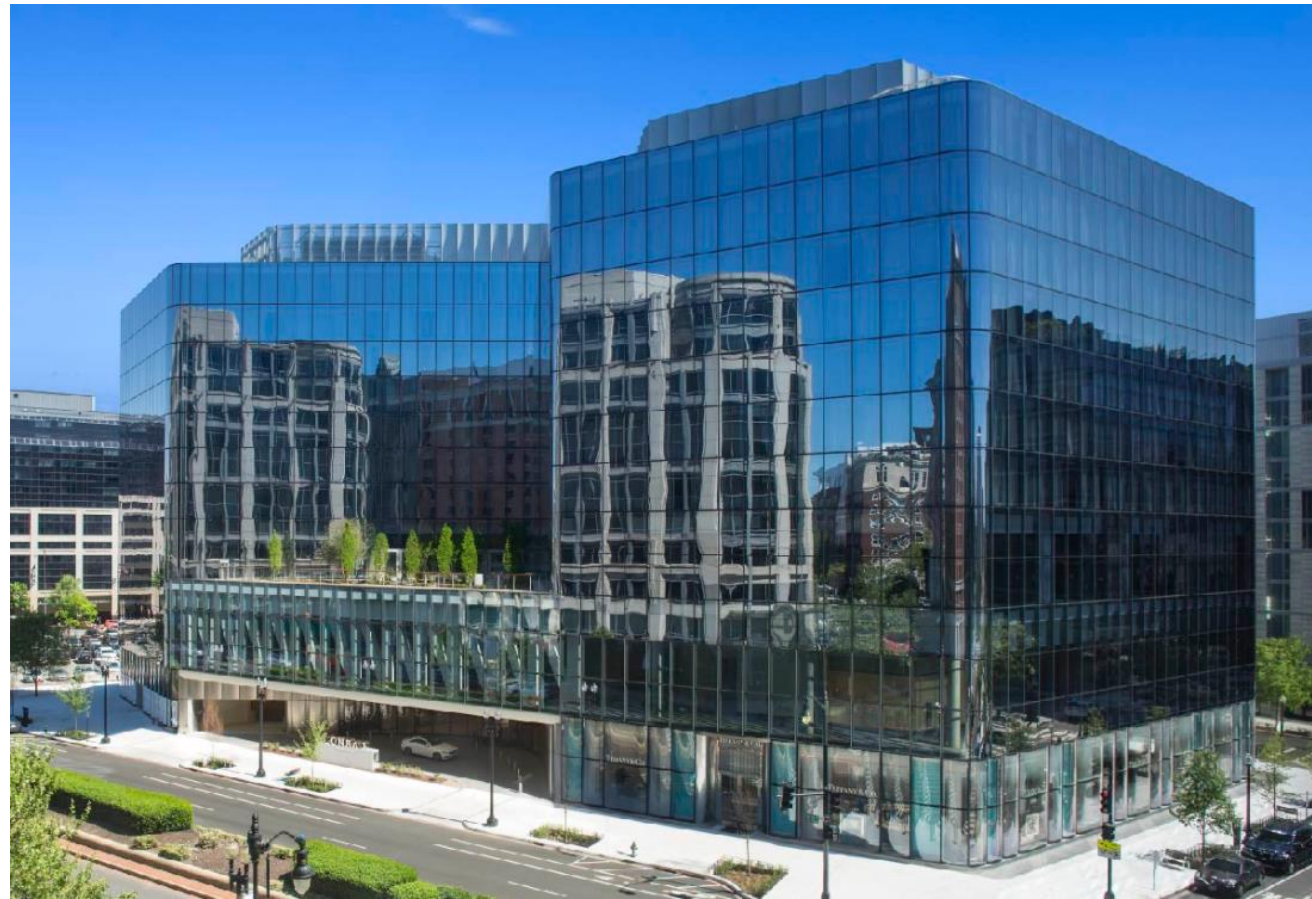


(RENDERING)



2000 L STREET NW





CONRAD HOTEL
950 NEW YORK AVENUE NW