



4457, 4459 MacArthur Blvd NW

NEW 17-UNIT APARTMENT HOUSE

4457, 4459 MacArthur Blvd NW,
Washington, DC 20007

REGION SITE CONTEXT



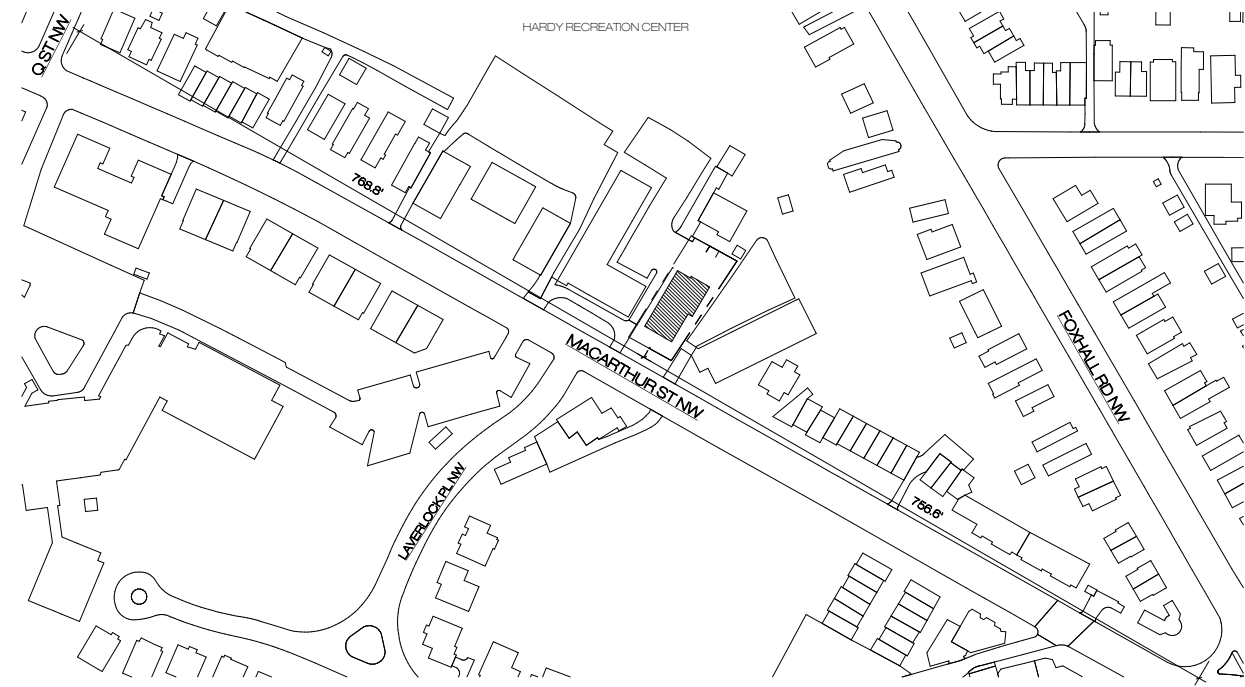
NEW 17-UNIT APARTMENT HOUSE

4457, 4459 MacArthur Blvd NW, Washington, DC 20007

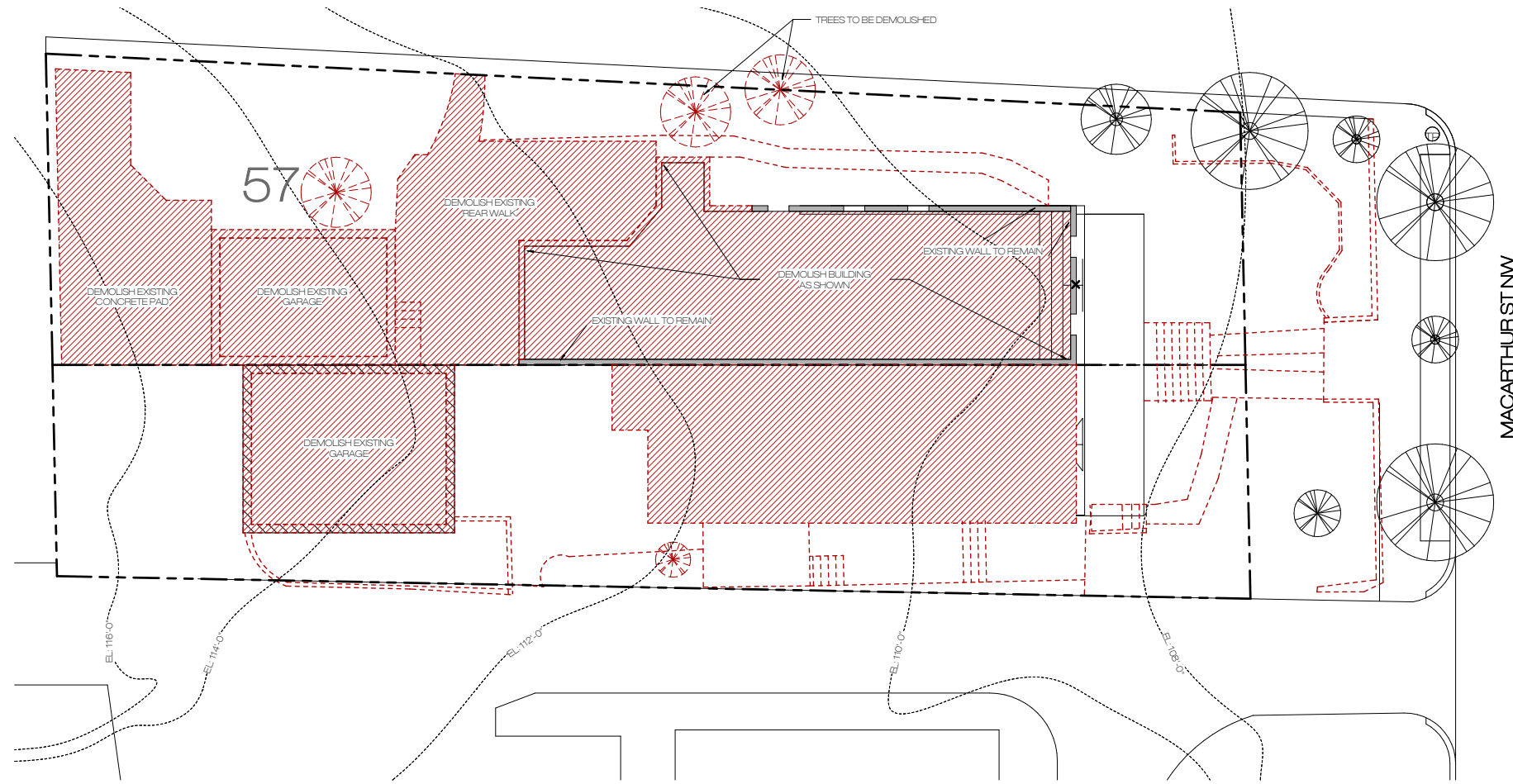


SCALE
NTS

002



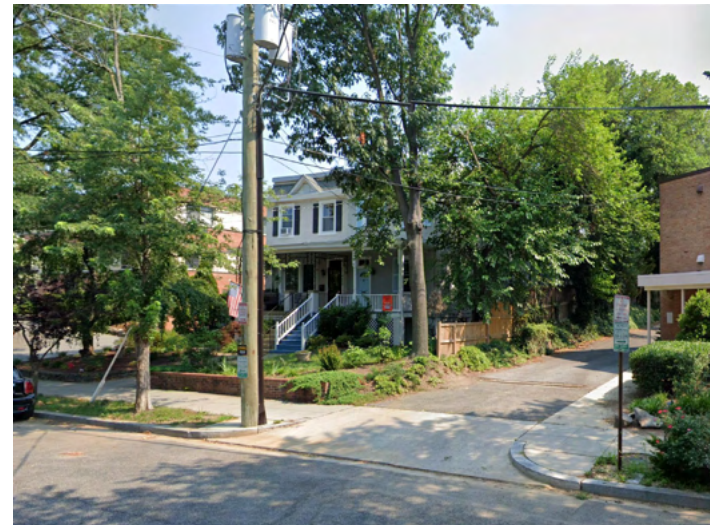
② LOCATION MAP



① DEMOLITION SITE PLAN



④ EX SITE IMAGE



③ EX SITE IMAGE



② EX SITE IMAGE



① EX SITE IMAGE

NEW 17-UNIT APARTMENT HOUSE

4457, 4459 MacArthur Blvd NW, Washington, DC 20007

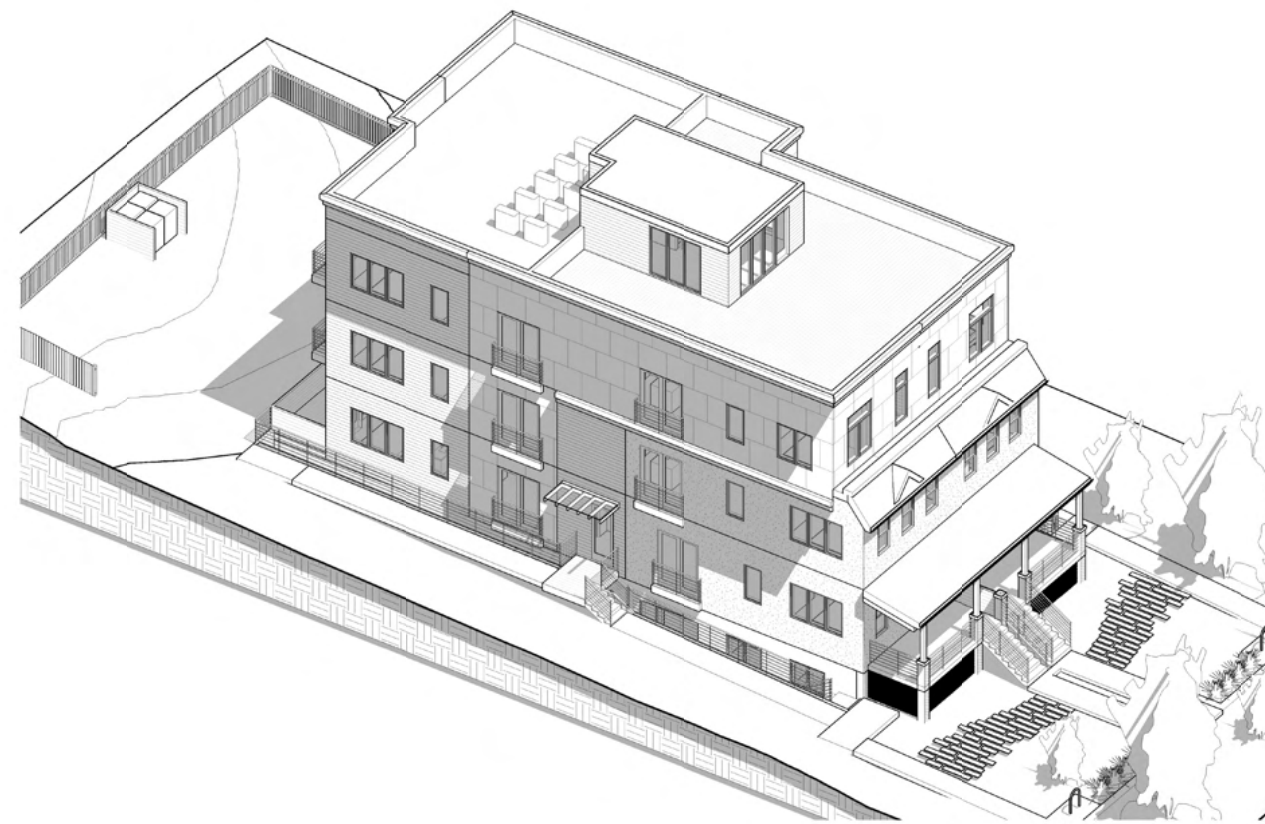
SCALE
NTS



② PERSPECTIVE 2



① PERSPECTIVE 1



④ 3D AXON



③ PERSPECTIVE 3

NEW 17-UNIT APARTMENT HOUSE

4457, 4459 MacArthur Blvd NW, Washington, DC 20007

SCALE
NTS



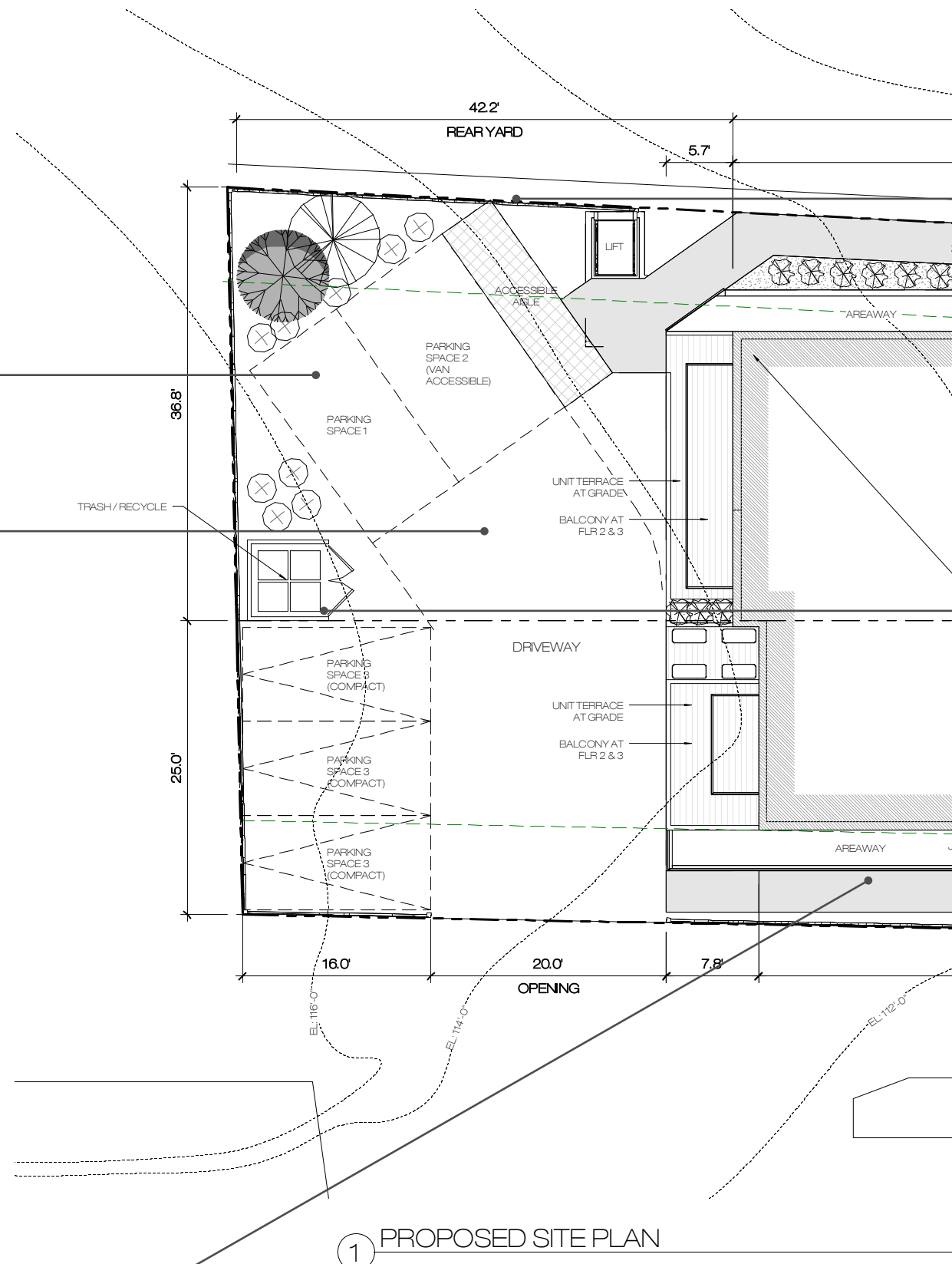
PARKING SPACES
SANDHILLS PAVER
(GREY)



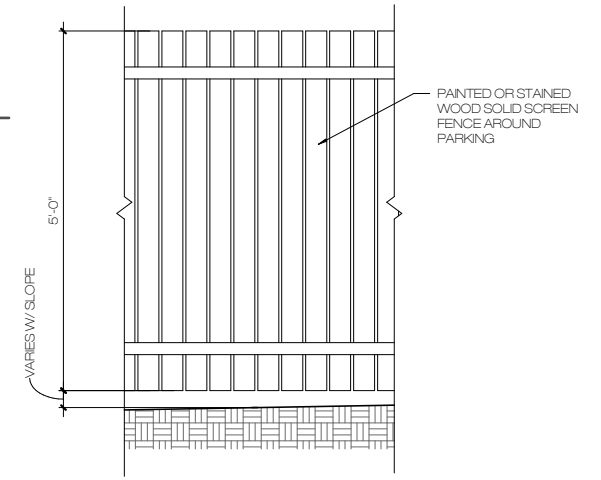
DRIVEWAY
TURFSTONE PAVERS



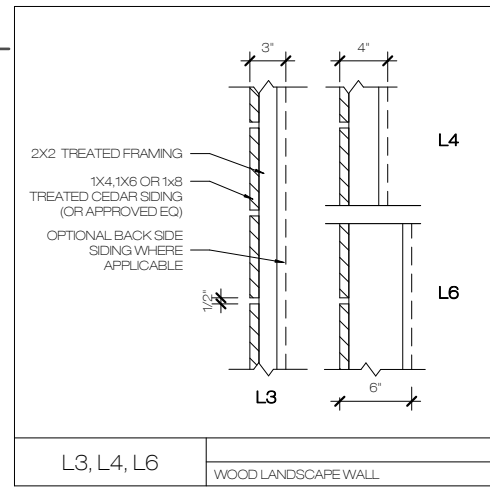
SIDEWALKS
PATTERNED SANDHILLS
PAVER (GREY)



① PROPOSED SITE PLAN



SOLID SCREEN FENCE



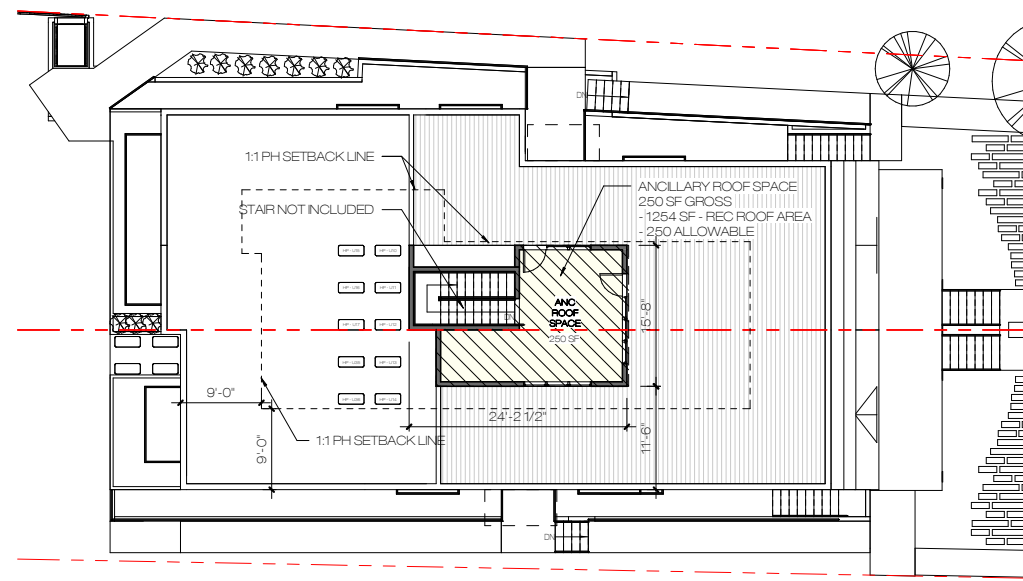
TRASH / RECYCLING ENCLOSURE

NEW 17-UNIT APARTMENT HOUSE

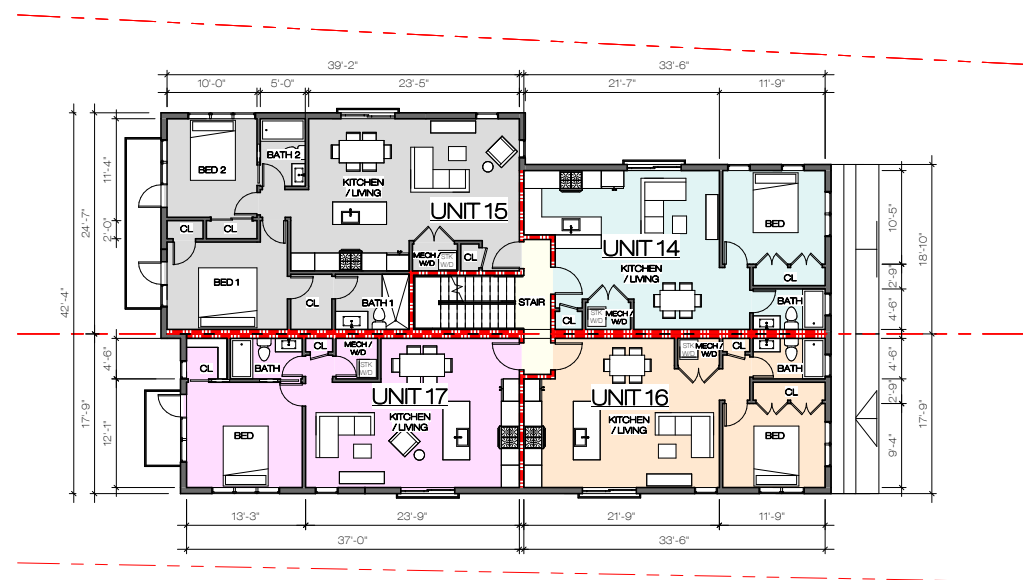
4457, 4459 MacArthur Blvd NW, Washington, DC 20007

SCALE
NTS

006

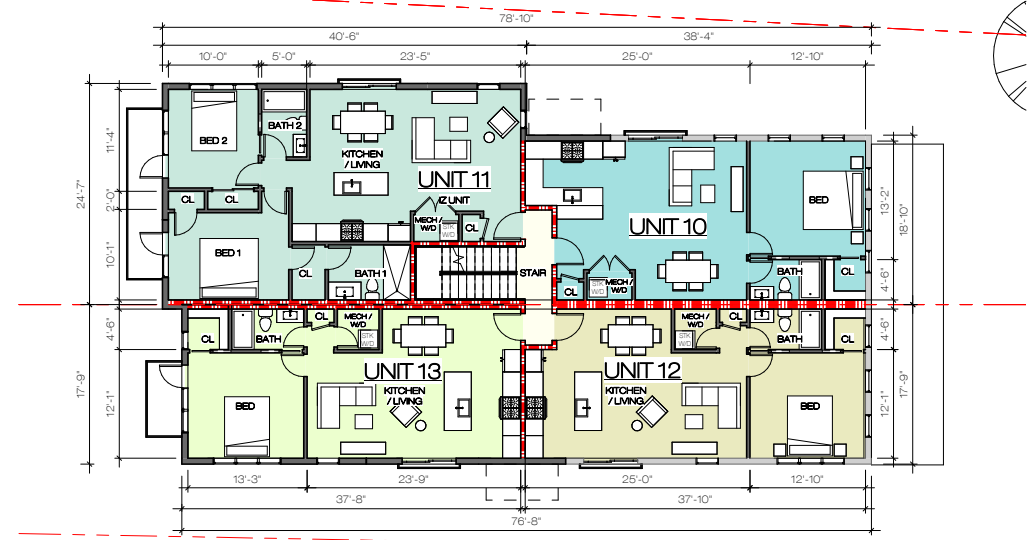


5 ROOF TERRACE

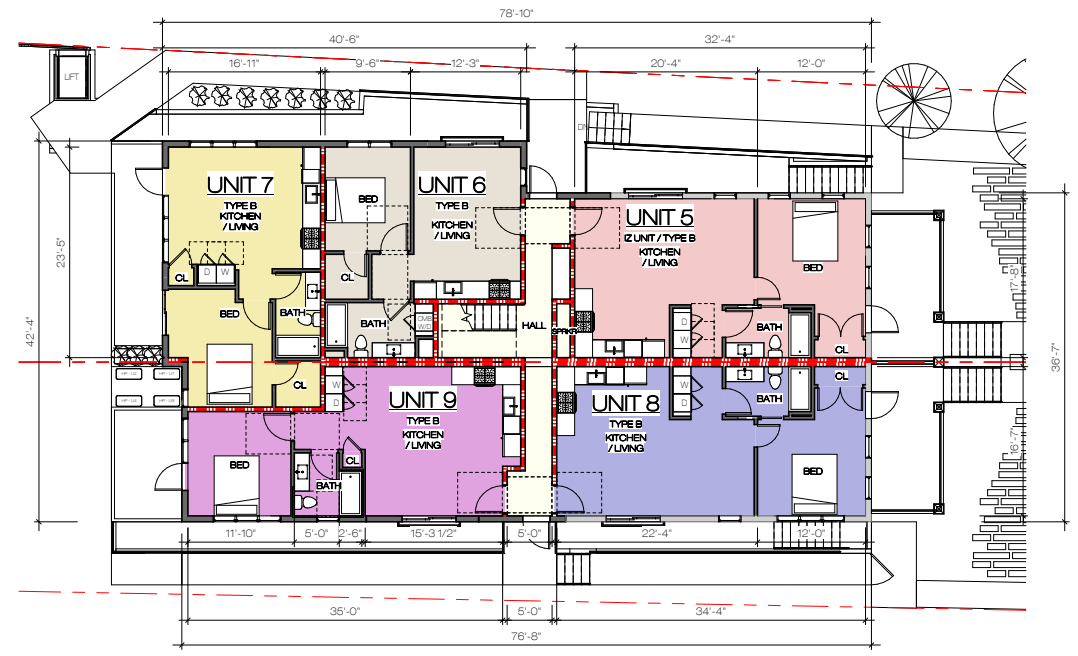


4 3RD FLOOR

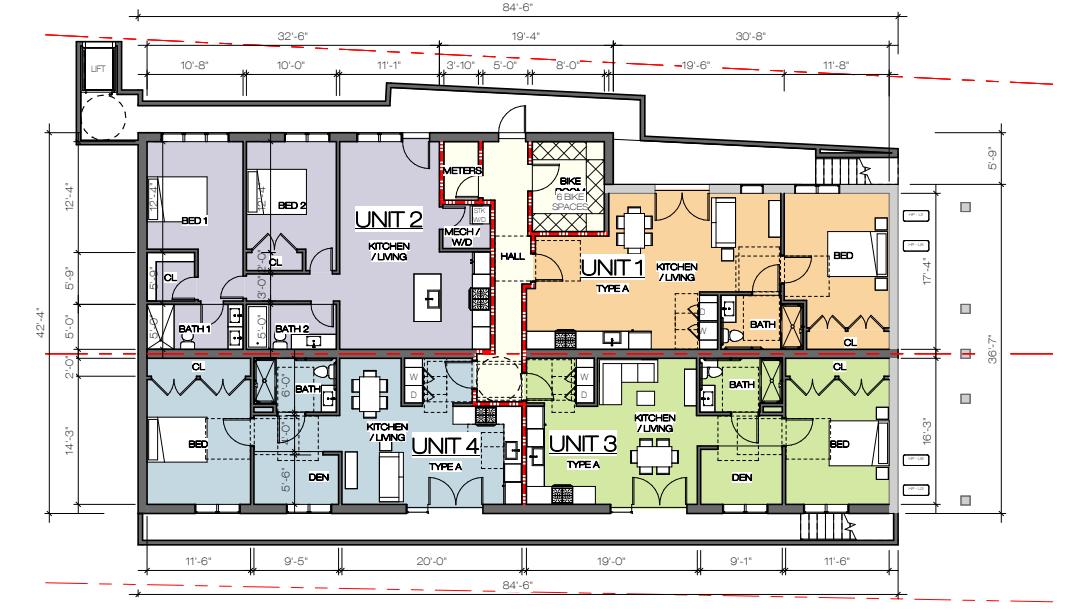
3 SECOND FLOOR



2 FIRST FLOOR



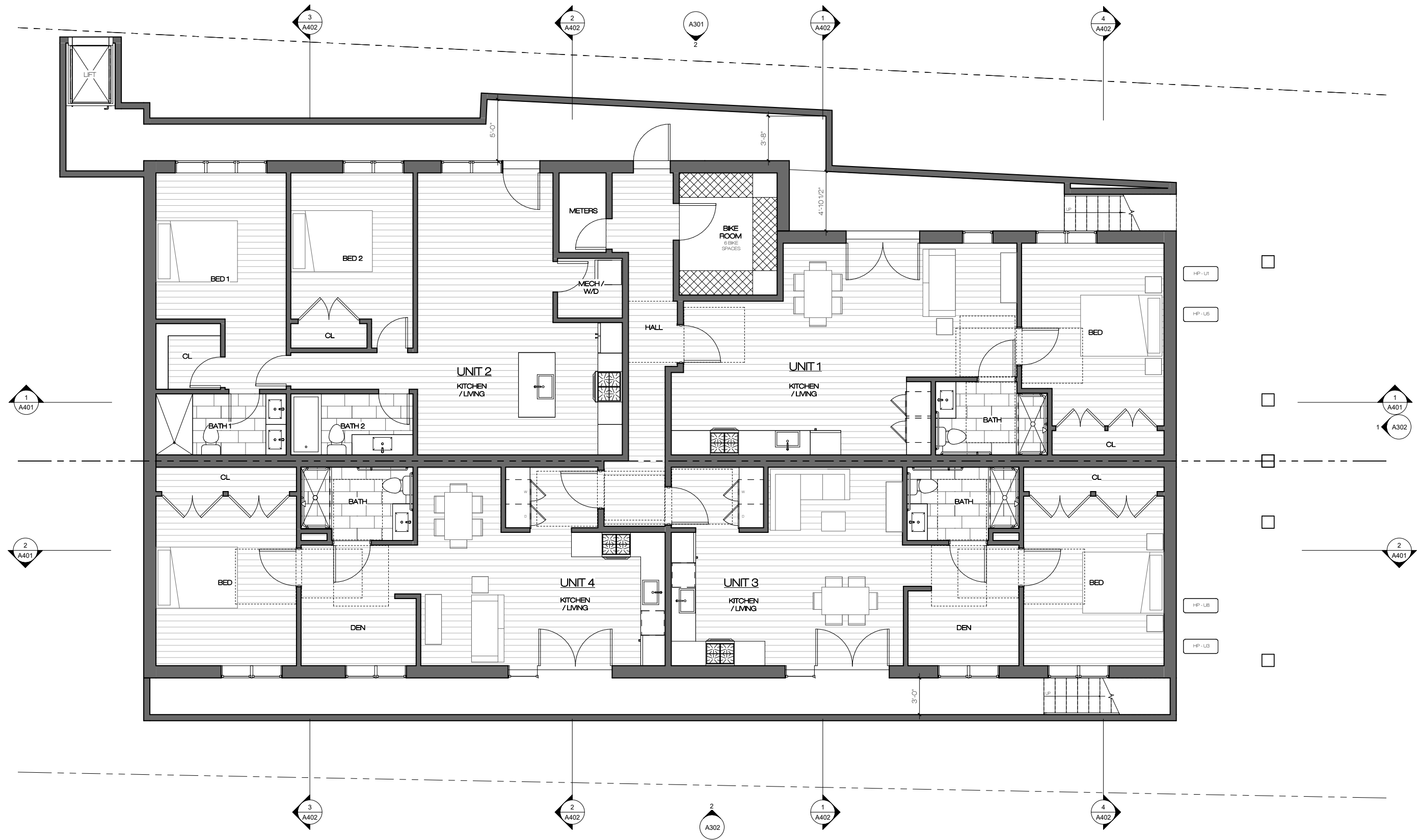
1 CELLAR



NEW 17-UNIT APARTMENT HOUSE

4457, 4459 MacArthur Blvd NW, Washington, DC 20007

SCALE
3/64" = 1'-0"

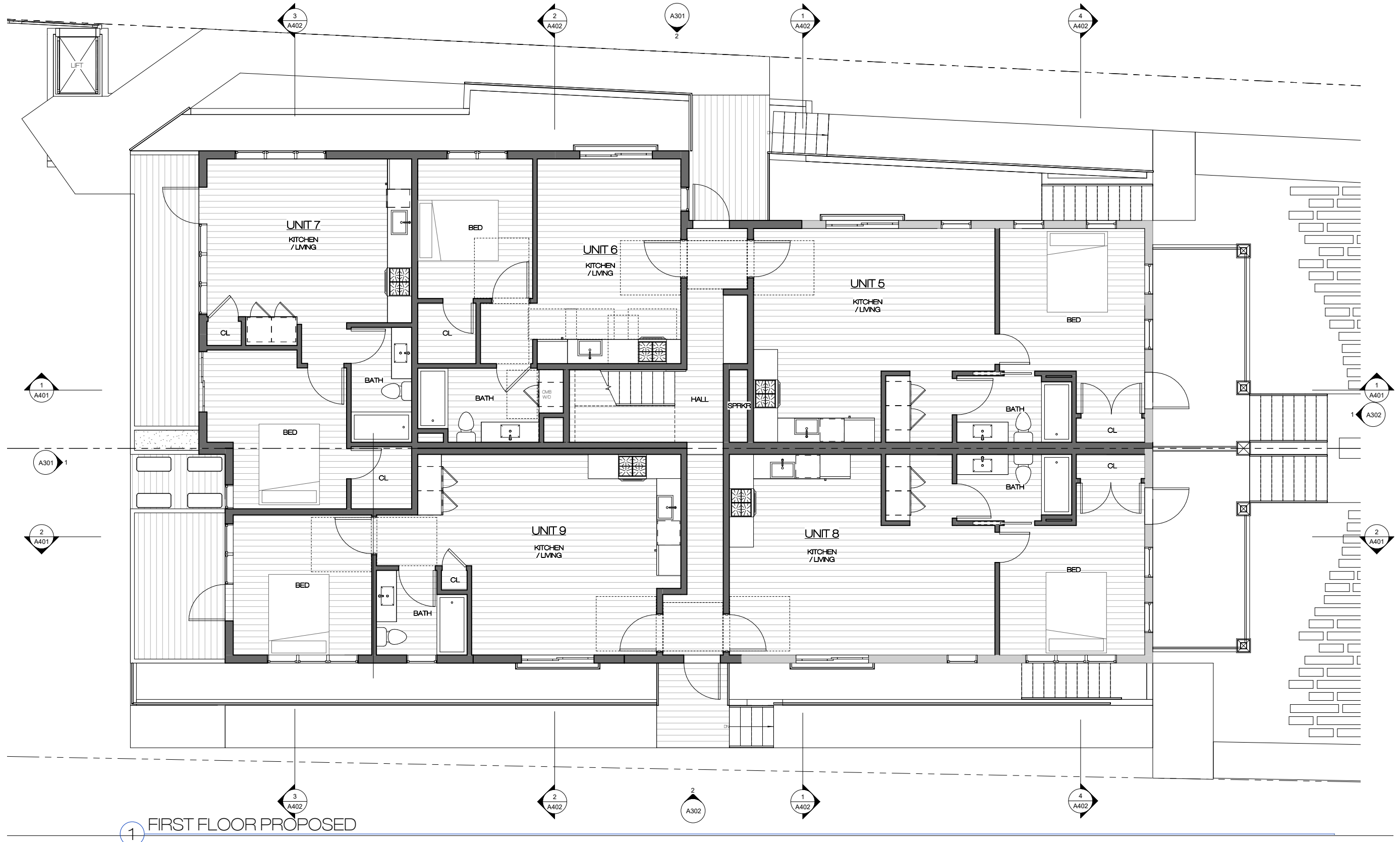


① CELLAR LEVEL PROPOSED

NEW 17-UNIT APARTMENT HOUSE

4457, 4459 MacArthur Blvd NW, Washington, DC 20007

SCALE
1/8" = 1'-0"



1 FIRST FLOOR PROPOSED

NEW 17-UNIT APARTMENT HOUSE

4457, 4459 MacArthur Blvd NW, Washington, DC 20007

SCALE
1/8" = 1'-0"



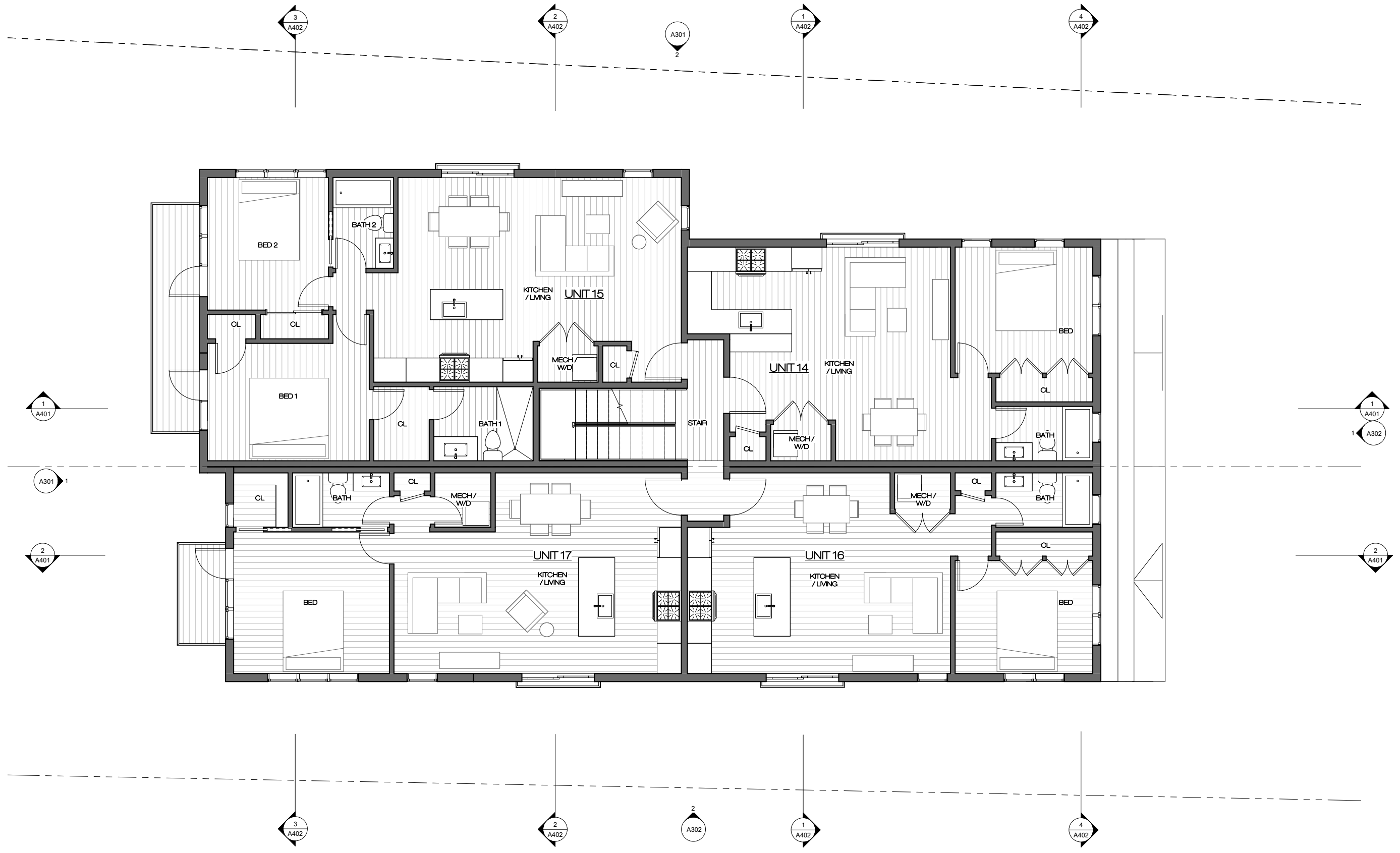
① SECOND FLOOR PROPOSED

NEW 17-UNIT APARTMENT HOUSE

4457, 4459 MacArthur Blvd NW, Washington, DC 20007

SCALE
1/8" = 1'-0"

0010



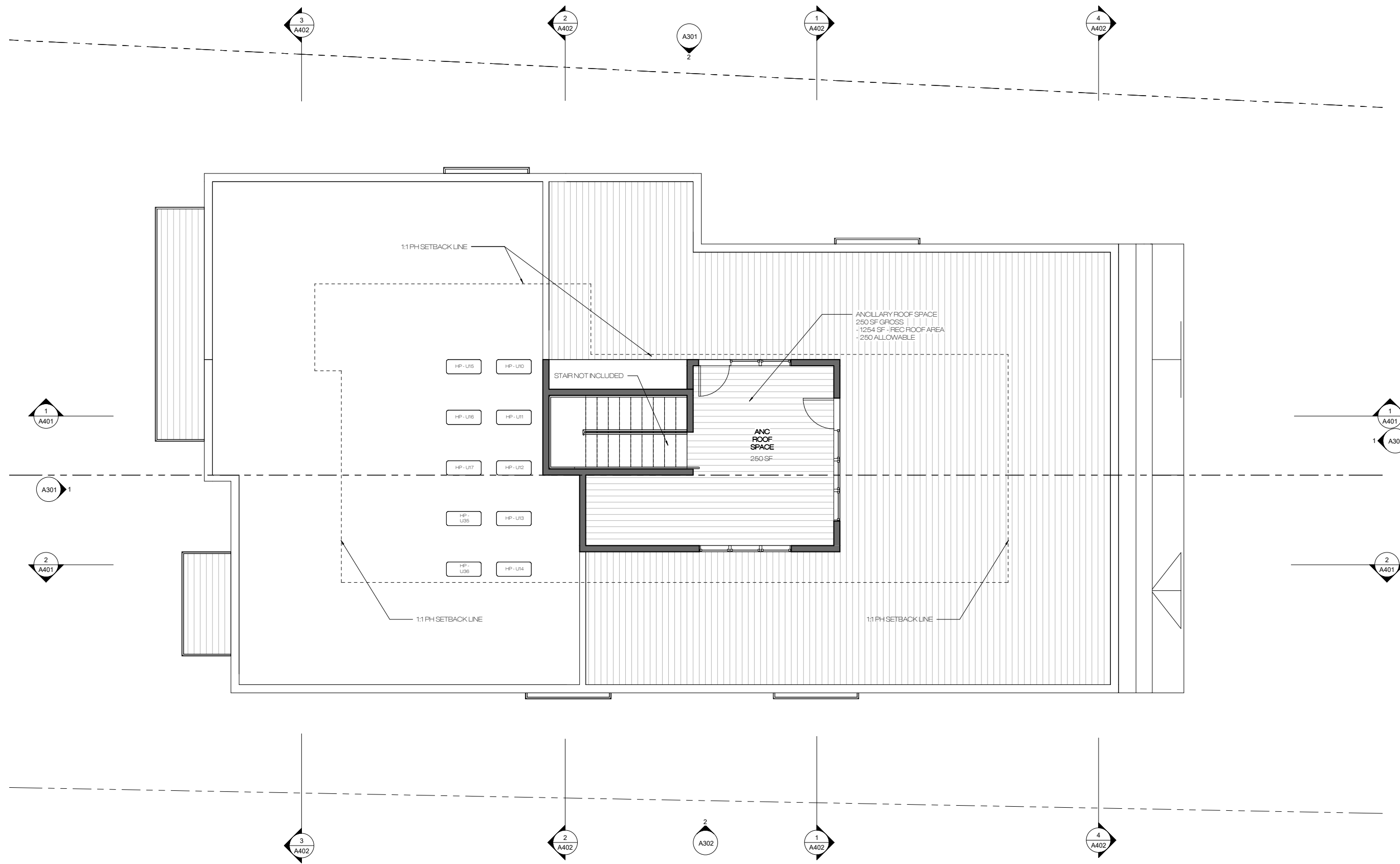
① THIRD FLOOR PROPOSED

NEW 17-UNIT APARTMENT HOUSE

4457, 4459 MacArthur Blvd NW, Washington, DC 20007

SCALE
1/8" = 1'-0"

0011



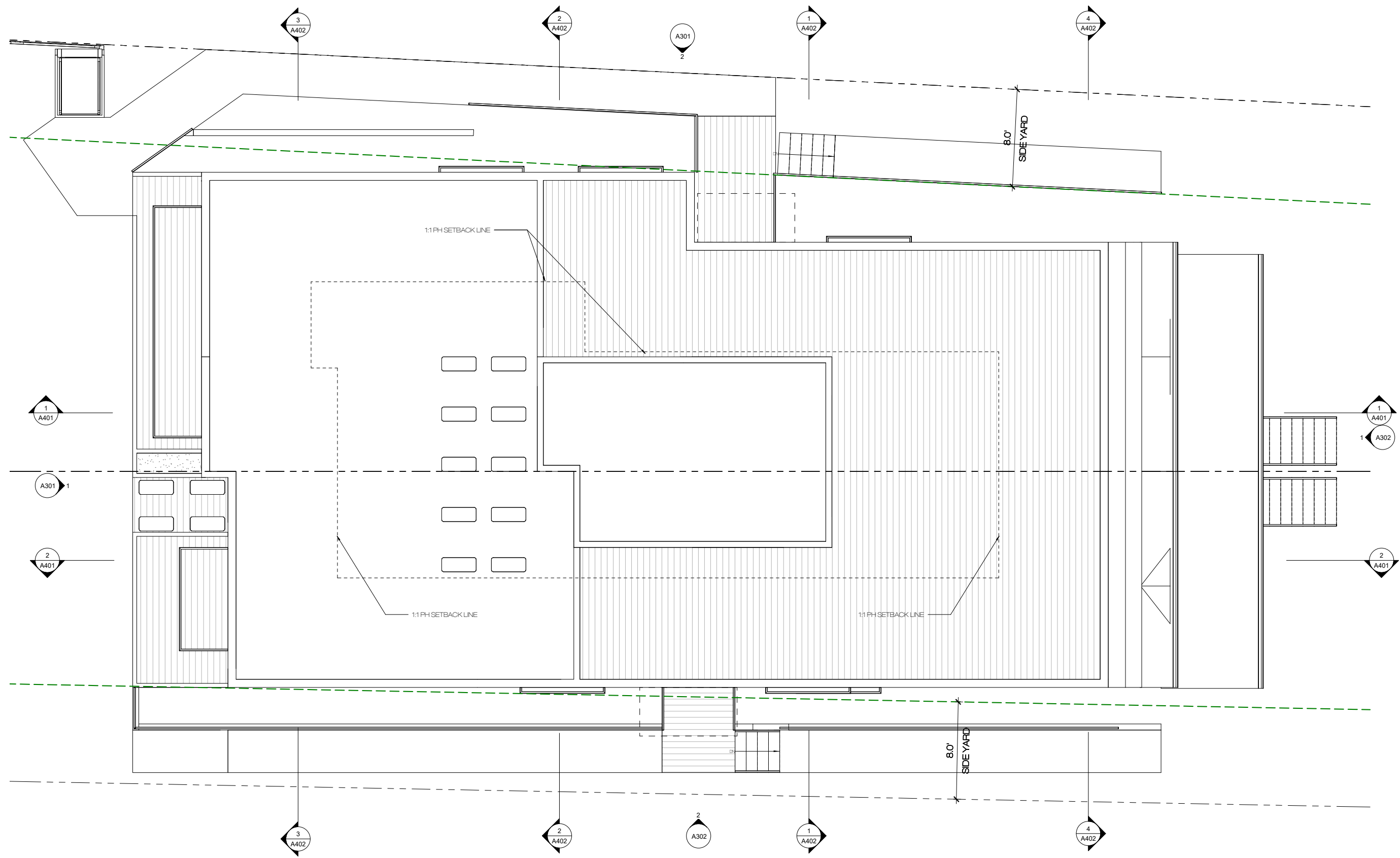
1 ROOF TERRACE PROPOSED

NEW 17-UNIT APARTMENT HOUSE

4457, 4459 MacArthur Blvd NW, Washington, DC 20007

SCALE
1/8" = 1'-0"

0012



1 ROOF PLAN PROPOSED

NEW 17-UNIT APARTMENT HOUSE

4457, 4459 MacArthur Blvd NW, Washington, DC 20007

SCALE
1/8" = 1'-0"

0013



② WEST (BOTTOM) ELEVATION



① SOUTH (RIGHT, STREET) ELEVATION

NEW 17-UNIT APARTMENT HOUSE

4457, 4459 MacArthur Blvd NW, Washington, DC 20007

SCALE
3/32" = 1'-0"

0014



② EAST (TOP) ELEVATION



① NORTH (LEFT) ELEVATION

NEW 17-UNIT APARTMENT HOUSE

4457, 4459 MacArthur Blvd NW, Washington, DC 20007

SCALE
3/32" = 1'-0"

0015

MATERIALS

HARDIE PLANK LAP SIDING
COLOR: ARTIC WHITE



HARDIE PLANK LAP SIDING
COLOR: GREY



HARDIE PANEL
GREY



STUCCO (EXISTING TO REMAIN)



BOARD ON BOARD WOOD FENCE
HEIGHT VARIES, 3'-6' MIN
STAIN COLOR: TBD

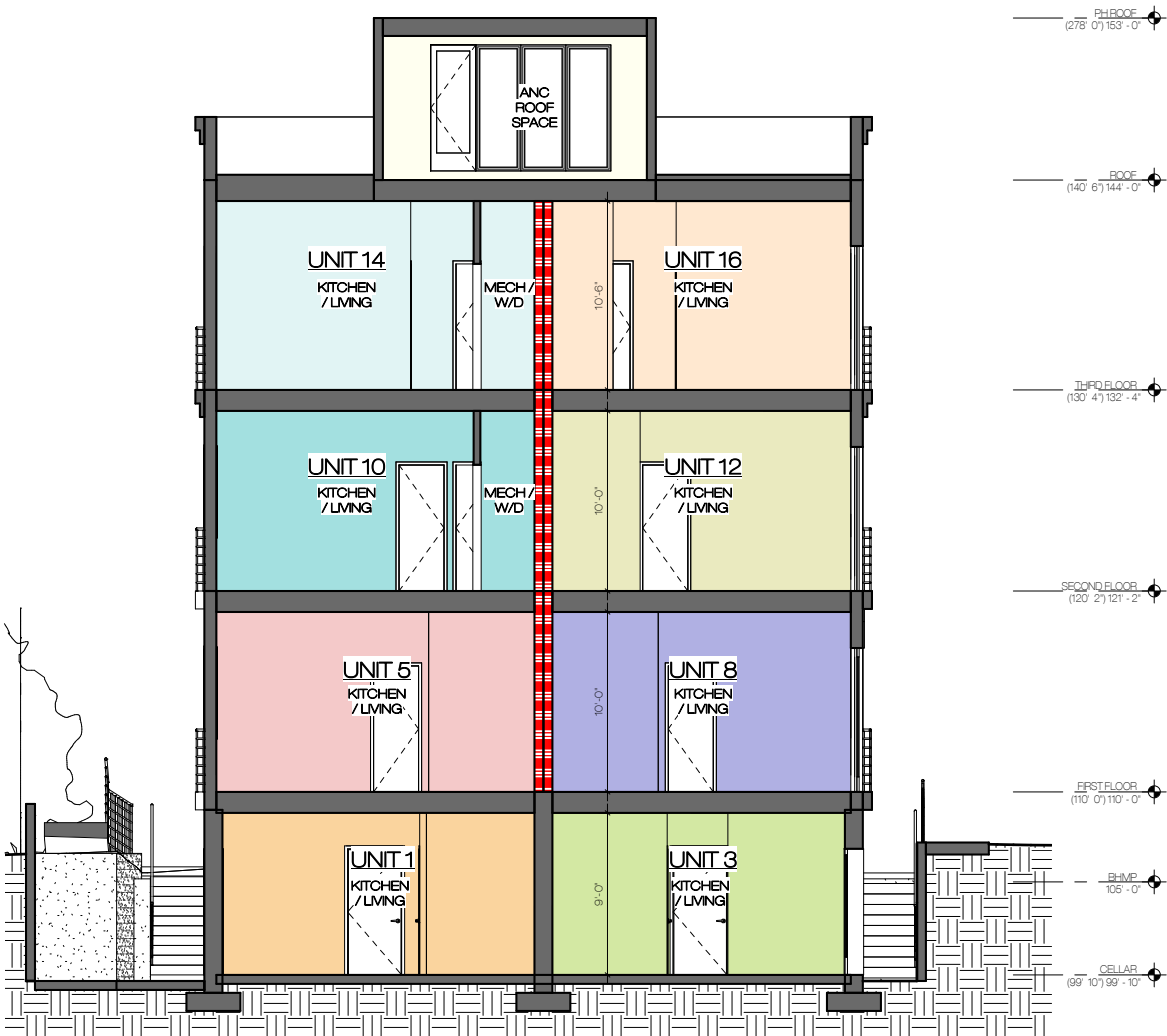


NEW 17-UNIT APARTMENT HOUSE

4457, 4459 MacArthur Blvd NW, Washington, DC 20007

SCALE
NTS

0016



1 CROSS SECTION 1



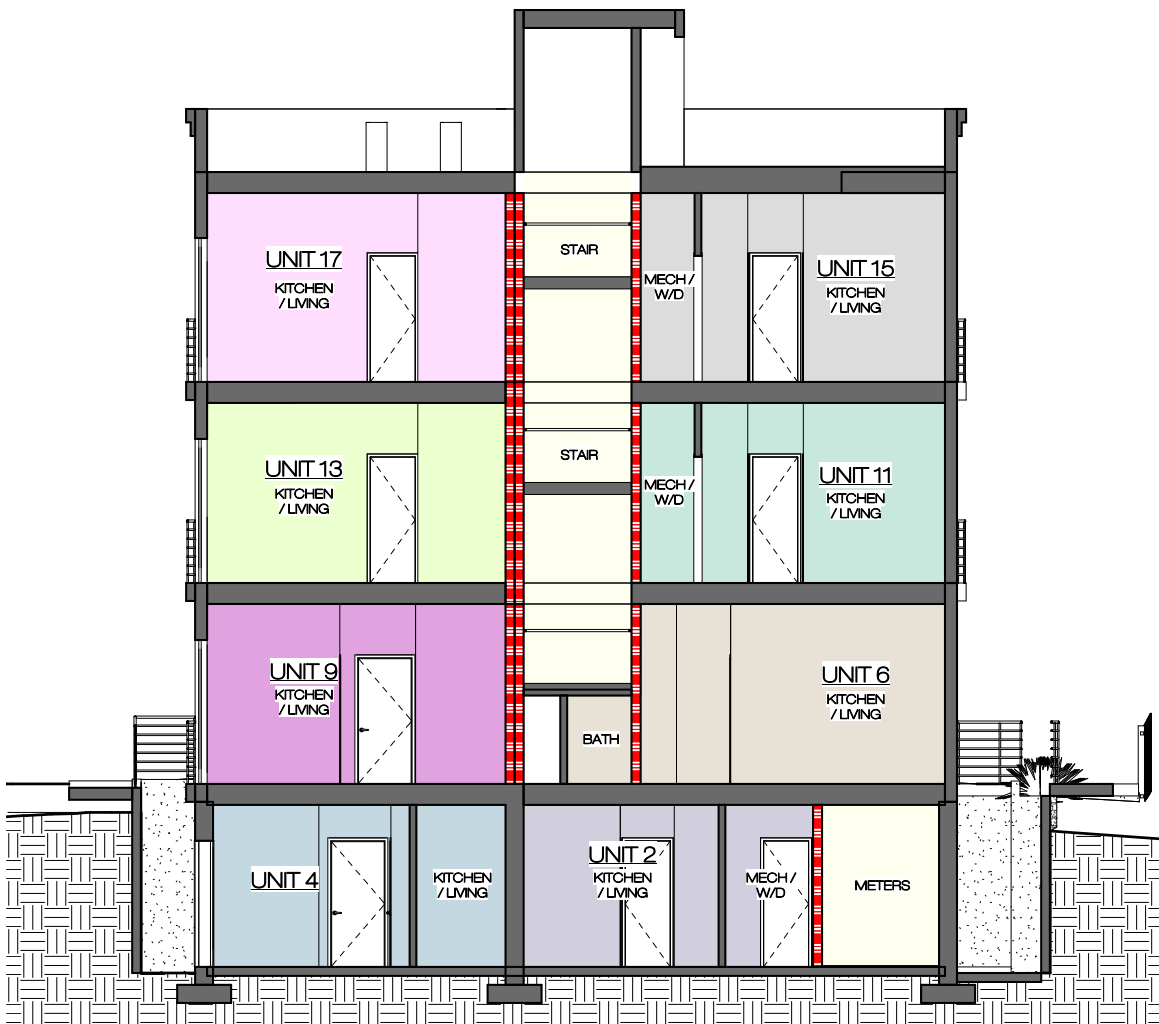
1 LONGITUDINAL SECTION 1

NEW 17-UNIT APARTMENT HOUSE

4457, 4459 MacArthur Blvd NW, Washington, DC 20007

SCALE
3/32" = 1'-0"

0017



② CROSS SECTION 2



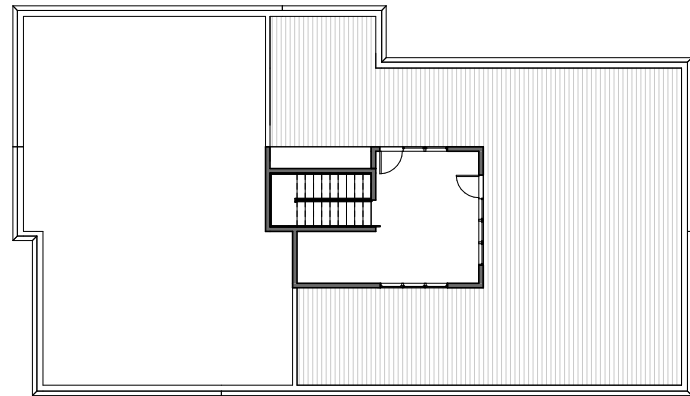
② LONGITUDINAL SECTION 2

NEW 17-UNIT APARTMENT HOUSE

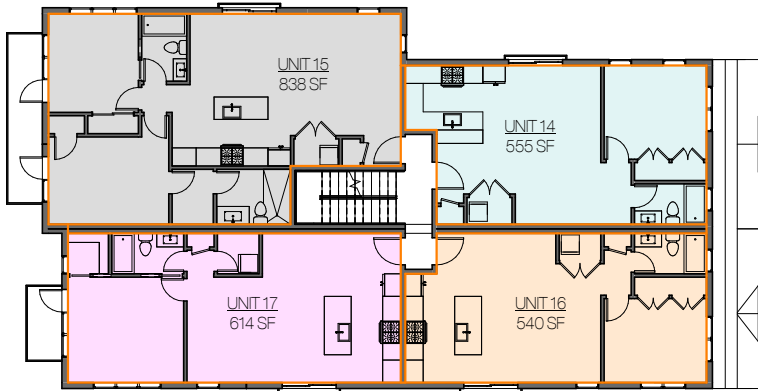
4457, 4459 MacArthur Blvd NW, Washington, DC 20007

SCALE
3/32" = 1'-0"

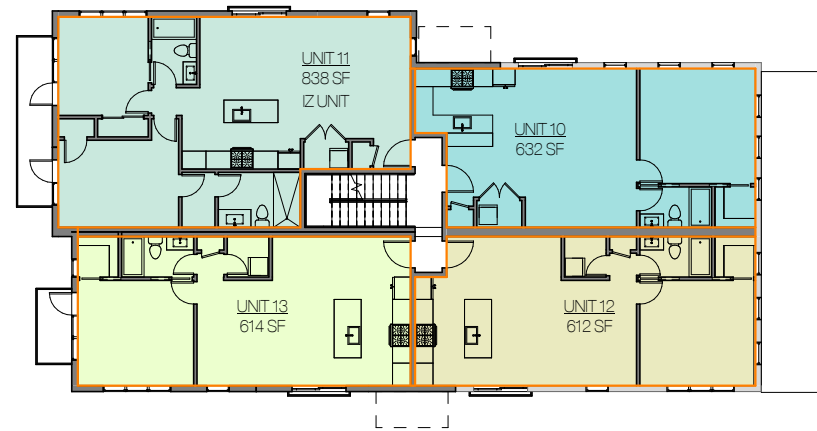
0018



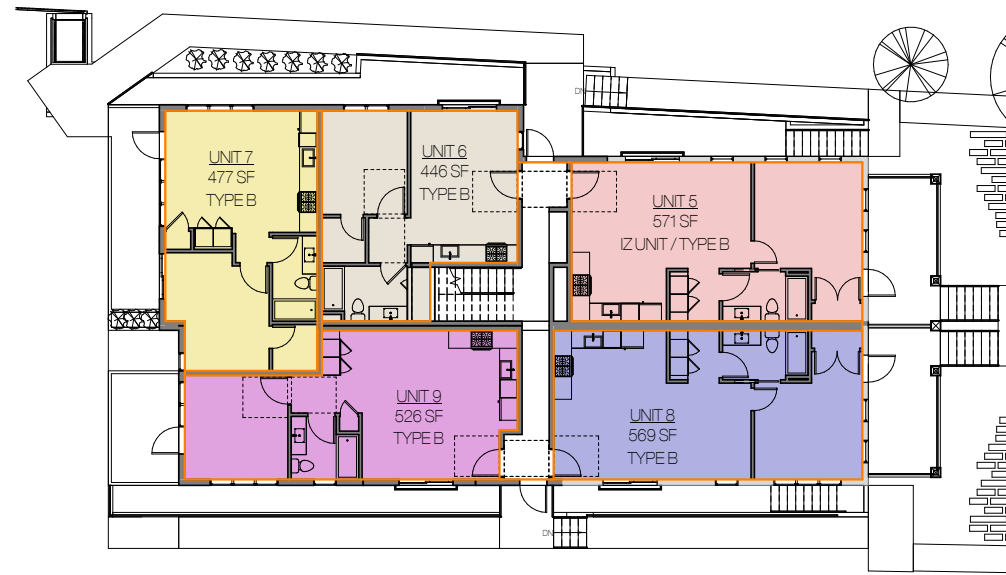
5 ROOF



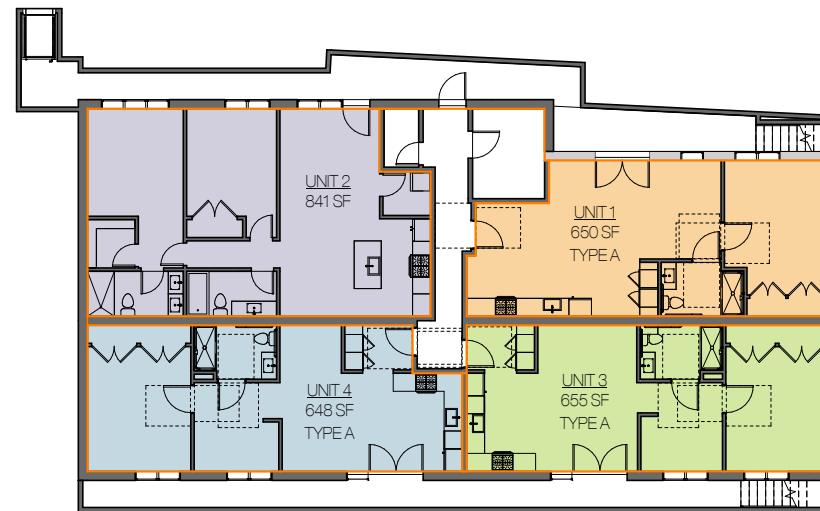
4 THIRD FLOOR



3 SECOND FLOOR



2 FIRST FLOOR



1 CELLAR

IZ UNIT INFORMATION

IZ UNIT SET ASIDE REQUIREMENTS OF TITLE 11 - ZONING (1003)

IZ WORKSHEET:

BOX 20.	TOTAL LAND AREA	8,410 SF
BOX 21.	TOTAL GROSS FLOOR AREA (ALL)	9,078 SF
BOX 22.	IZ BONUS DENSITY USED	1,509 SF
BOX 23.	TOTAL GROSS FLOOR AREA (RESIDENTIAL)	9,078 SF
BOX 24.	NOT APPLICABLE	
BOX 25.	RESIDENTIAL GROSS FLOOR AREA (BOX 23) + GROSS CELLAR AREA	9,078 SF 3,395 SF TOTAL: 12,473 SF
BOX 26.	RESIDENTIAL NET FLOOR AREA + NET CELLAR AREA	X SF X SF TOTAL: 10,625 SF
BOX 27.	RATIO BOX 26 / BOX 25	.85
BOX 28.	FACTOR YIELDING GREATER IZ 10% OF GFA 75% OF BONUS DENSITY UTILIZED (1,509*.75)	X // 1,247 SF X // 1,184 SF
BOX 29.	PRELIMINARY IZ REQUIREMENT: RESIDENTIAL GROSS FLOOR AREA NET RESIDENTIAL FLOOR AREA GROSS * BOX 27.	1,247 SF 1,060 SF
BOX 30.	OWNERSHIP 20% REDUCTION	--
BOX 31.	PENTHOUSE IZ REQ W/IN BLDG SF	--
BOX 32.	PENTHOUSE IZ FILLED BY PAYMENT?	YES
BOX 33.	TOTAL NET RESIDENTIAL IZ REQUIRED	1,060 SF

PROPORTIONALITY RULE - 1005.1

WHERE THE SET-ASIDE REQUIREMENT OF SUBTITLE C-1003 (EXCLUDING ANY SET-ASIDE REQUIREMENT SATISFIED BY PROVIDING A CONTRIBUTION TO A HOUSING TRUST FUND PURSUANT TO SUBTITLE C-1006.10) IS 850 SQUARE FEET OR MORE, THE FIRST INCLUSIVE UNIT SHALL BE A UNIT WITH AT LEAST TWO BEDROOMS.

REQUIRES 2 IZ UNITS W/ FIRST BEING A 2 BEDROOM.

UNIT 11 - 2 BED 838 SF
UNIT 5 - 1 BED 571 SF

NET UNIT AREA TOTALS

-FOR INFORMATION ONLY.
-UNIT MEASUREMENT SHOWN IS INSIDE FACE OF UNIT EXTERIOR WALLS. (PAINT TO PAINT)

NAME	AREA	UNIT TYPE	BEDS
UNIT 1	650 SF	TYPE A	1 BED
UNIT 2	841 SF		2 BED
UNIT 3	655 SF	TYPE A	1 BED
UNIT 4	648 SF	TYPE A	1 BED
UNIT 5	571 SF	IZ UNIT / TYPE B	1 BED
UNIT 6	446 SF	TYPE B	1 BED
UNIT 7	477 SF	TYPE B	1 BED
UNIT 8	569 SF	TYPE B	1 BED
UNIT 9	526 SF	TYPE B	1 BED
UNIT 10	632 SF		1 BED
UNIT 11	838 SF	IZ UNIT	2 BED
UNIT 12	612 SF		1 BED
UNIT 13	614 SF		1 BED
UNIT 14	555 SF		1 BED
UNIT 15	838 SF		2 BED
UNIT 16	540 SF		1 BED
UNIT 17	614 SF		1 BED
Grand total	10625 SF		

NEW 17-UNIT APARTMENT HOUSE

4457, 4459 MacArthur Blvd NW, Washington, DC 20007

SCALE
3/64" = 1'-0"

0020

Bollard

Symmetric



A series of LED bollard luminaires with unshielded 360° light distribution. Luminaires in this family are provided without safety guard and hand-blown three-ply opal glass for even illumination. Designed for use in the illumination of gardens and residential installations.

Die-cast and extruded aluminum · Three-ply opal glass diffuser
 LED color temperatures: 2700K, 3000K, 3500K, 4000K
 All BEGA standard finishes are matte, textured powder coat with minimum 3 mil thickness. BEGA Unidure® finish, a fluoropolymer technology, provides superior fade protection in Black, Bronze, and Silver. BEGA standard White, as well as optionally available RAL and custom colors, are a polyester powder.
 NRTL listed to North American standards - Suitable for wet locations - Protection class IP 65



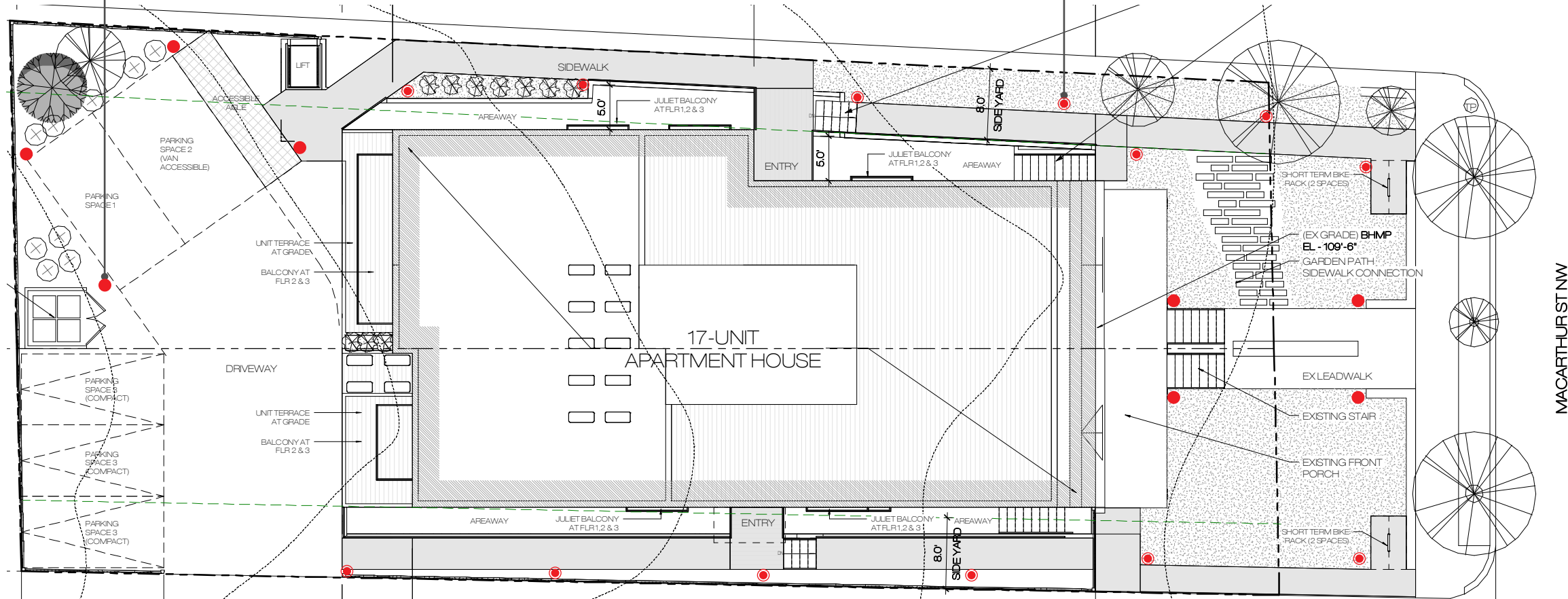
In-grade luminaire

Ground surface illuminator



A series of LED in-grade luminaires to illuminate ground surfaces. Equipped with one, two or four light apertures to meet different lighting requirements. These luminaires are designed to bear pressure loads up to 8800 lbs. from vehicles with pneumatic tires. The luminaires must not be used for traffic lanes where they are subject to horizontal pressure from vehicles braking, accelerating and changing direction.

Die-cast aluminum · Clear safety glass · Reflector made of pure anodized aluminum
 LED color temperatures: 2700K, 3000K, 3500K, 4000K
 All BEGA standard finishes are matte, textured powder coat with minimum 3 mil thickness. BEGA Unidure® finish, a fluoropolymer technology, provides superior fade protection in Black, Bronze, and Silver. BEGA standard White, as well as optionally available RAL and custom colors, are a polyester powder.
 NRTL listed to North American standards - Suitable for wet locations - Protection class IP 67

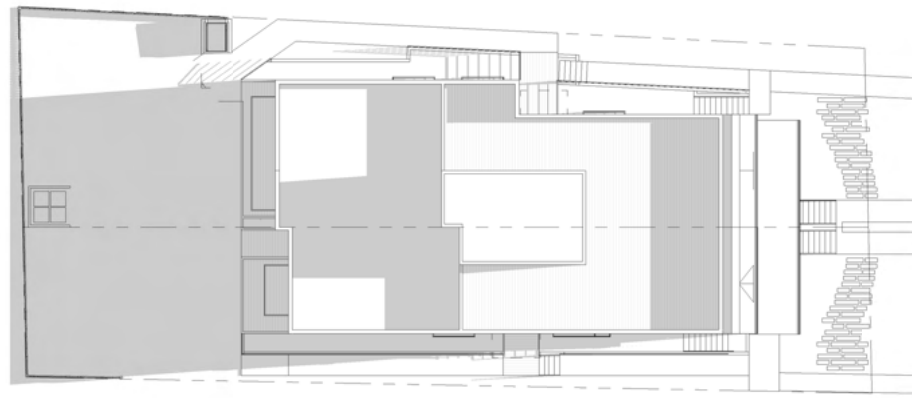


NEW 17-UNIT APARTMENT HOUSE

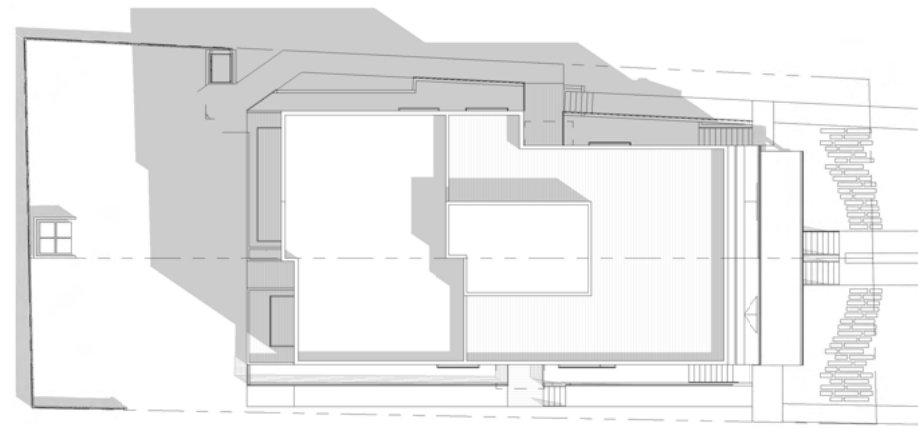
4457, 4459 MacArthur Blvd NW, Washington, DC 20007

SCALE
 NTS

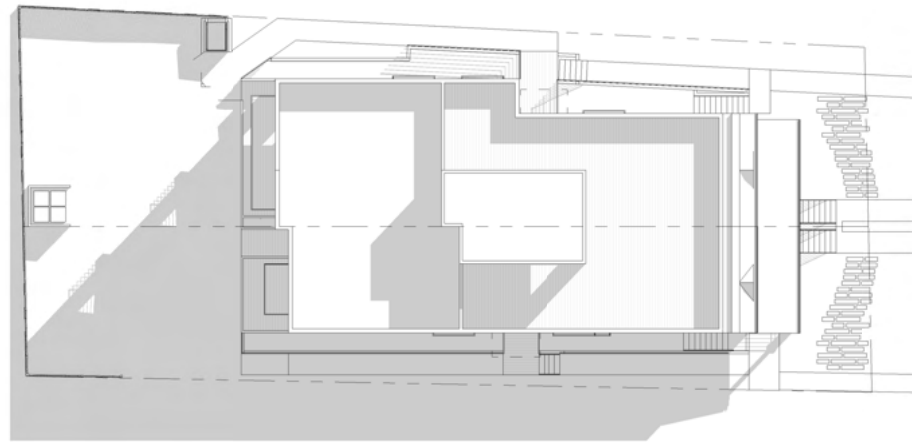
0021



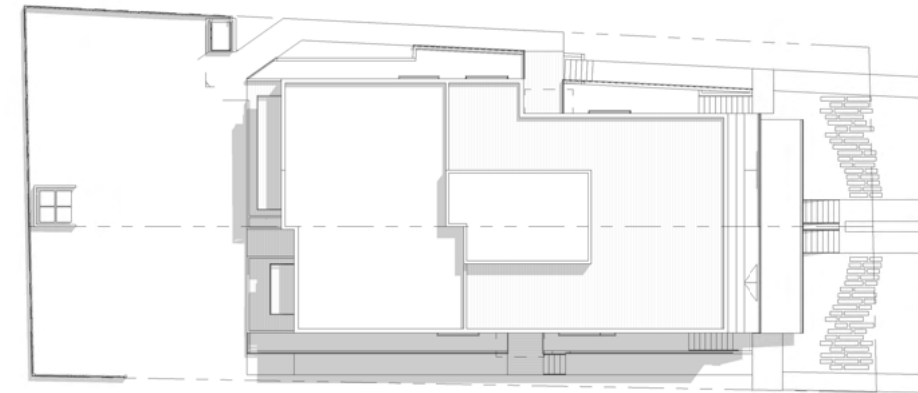
⑥ SHADOW STUDY - 3PM WINTER SOLSTICE



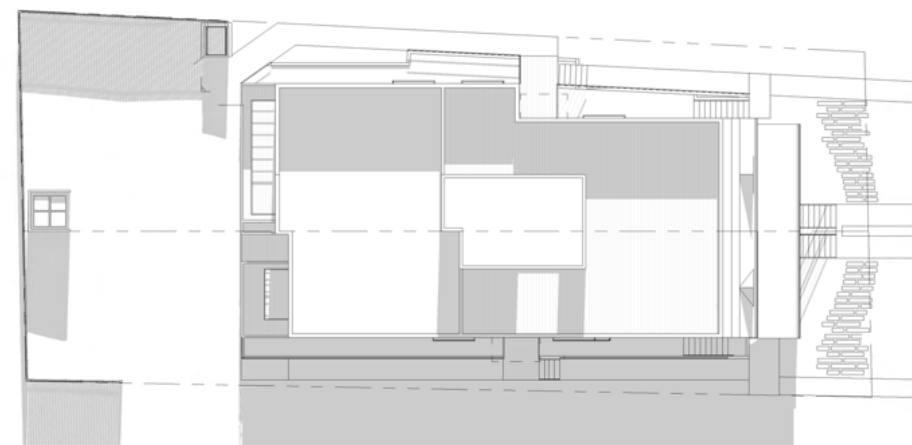
③ SHADOW STUDY - 3PM SUMMER SOLSTICE



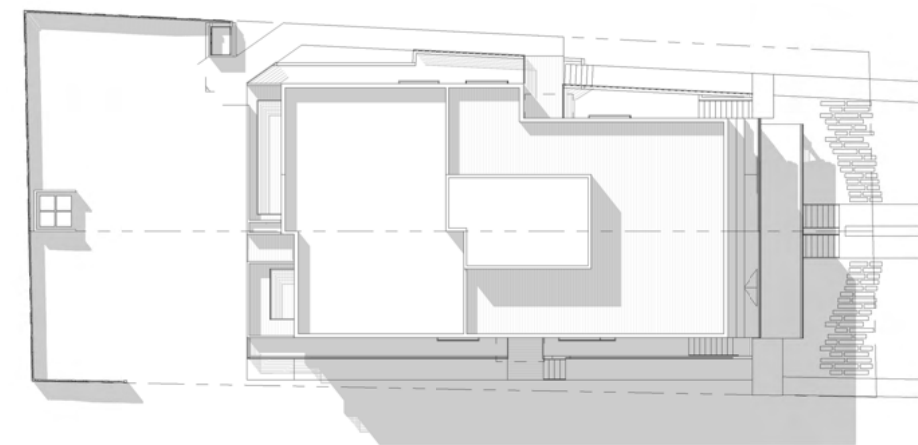
⑤ SHADOW STUDY - 12PM WINTER SOLSTICE



② SHADOW STUDY - 12PM SUMMER SOLSTICE



④ SHADOW STUDY - 9AM WINTER SOLSTICE



① SHADOW STUDY - 9AM SUMMER SOLSTICE

NEW 17-UNIT APARTMENT HOUSE

4457, 4459 MacArthur Blvd NW, Washington, DC 20007



SCALE
1/32" = 1'-0"