

EXISTING SITE CONDITIONS



VIEW FROM 2ND FLOOR

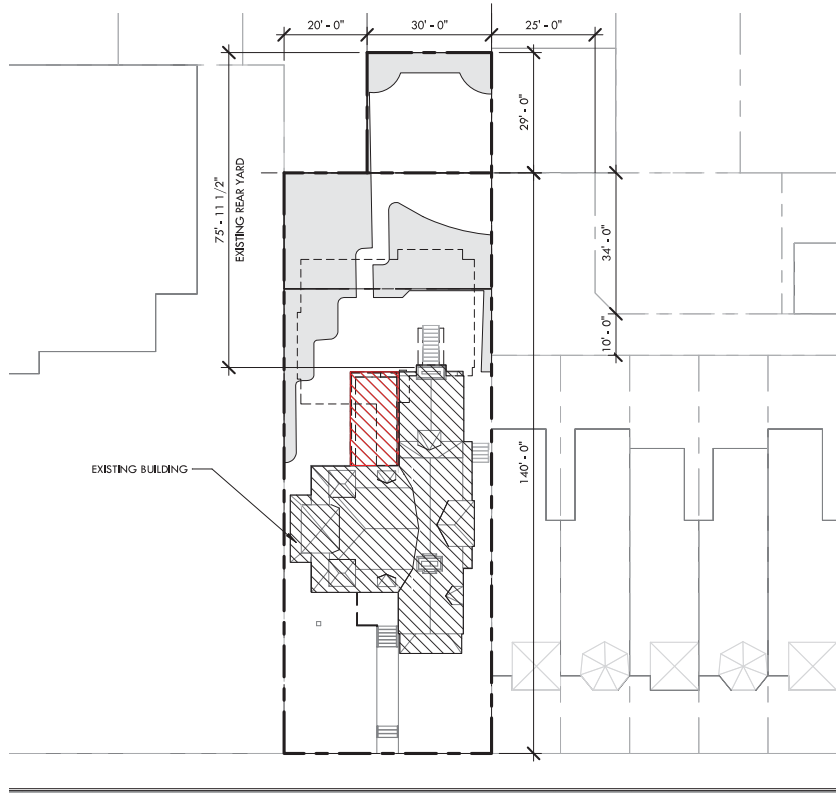


VIEW FROM REAR YARD

PAVEMENT/PLANTING AREA
 EXISTING PLANTING: 1,561 SF
 EXISTING PAVEMENT: 2,080 SF

ADDED GREEN AREA
 PAVEMENT BECOMING PLANTING: 263 SF
 PAVEMENT BECOMING GREEN PAVERS: 1,036 SF

LOCATION OF ADDITION
 ADDITION ON PLANTING: 477 SF
 ADDITION ON PAVEMENT: 790 SF
 TOTAL SITE ADDITION: 1,267 SF



T ST. NW

SD SITE PLAN EXISTING

1" = 30'-0"

SITE MATERIAL OPTIONS



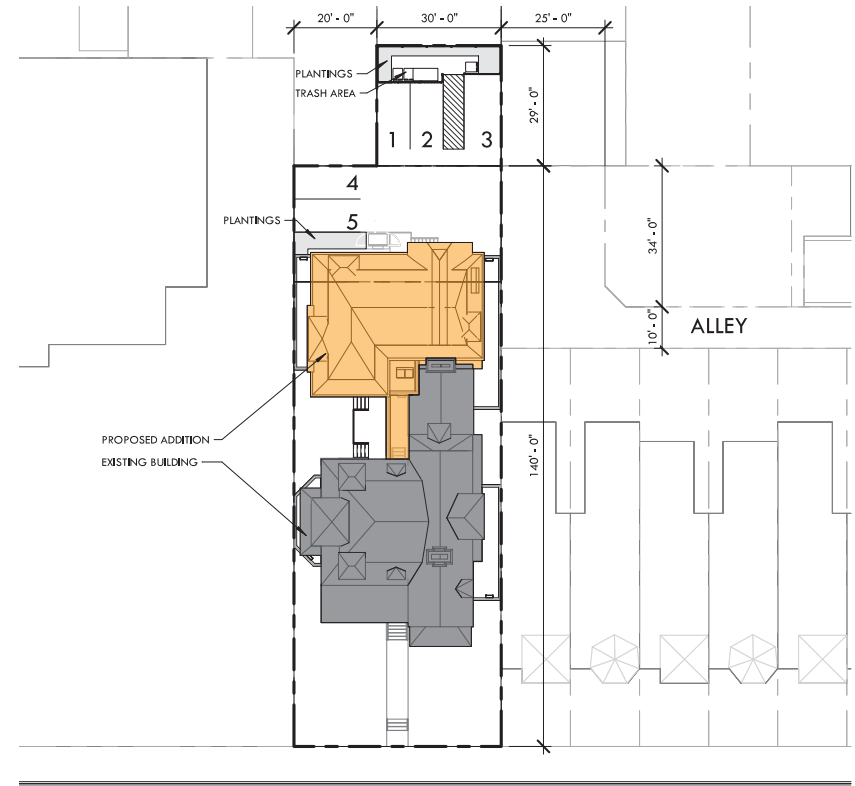
BELGARD TURFSTONE



TECHO BLOC PAVER



GREEN WALL



T ST. NW

SD SITE PLAN PROPOSED

1" = 30'-0"