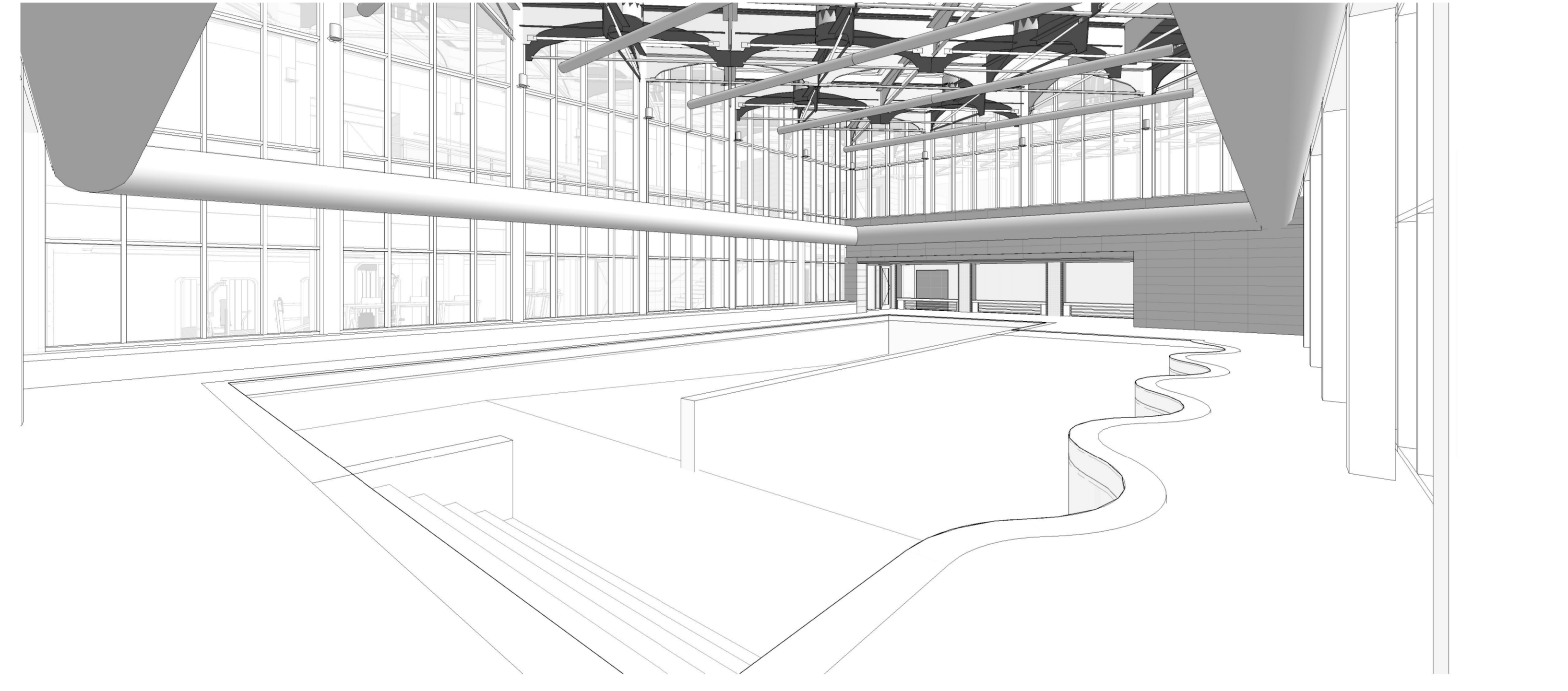
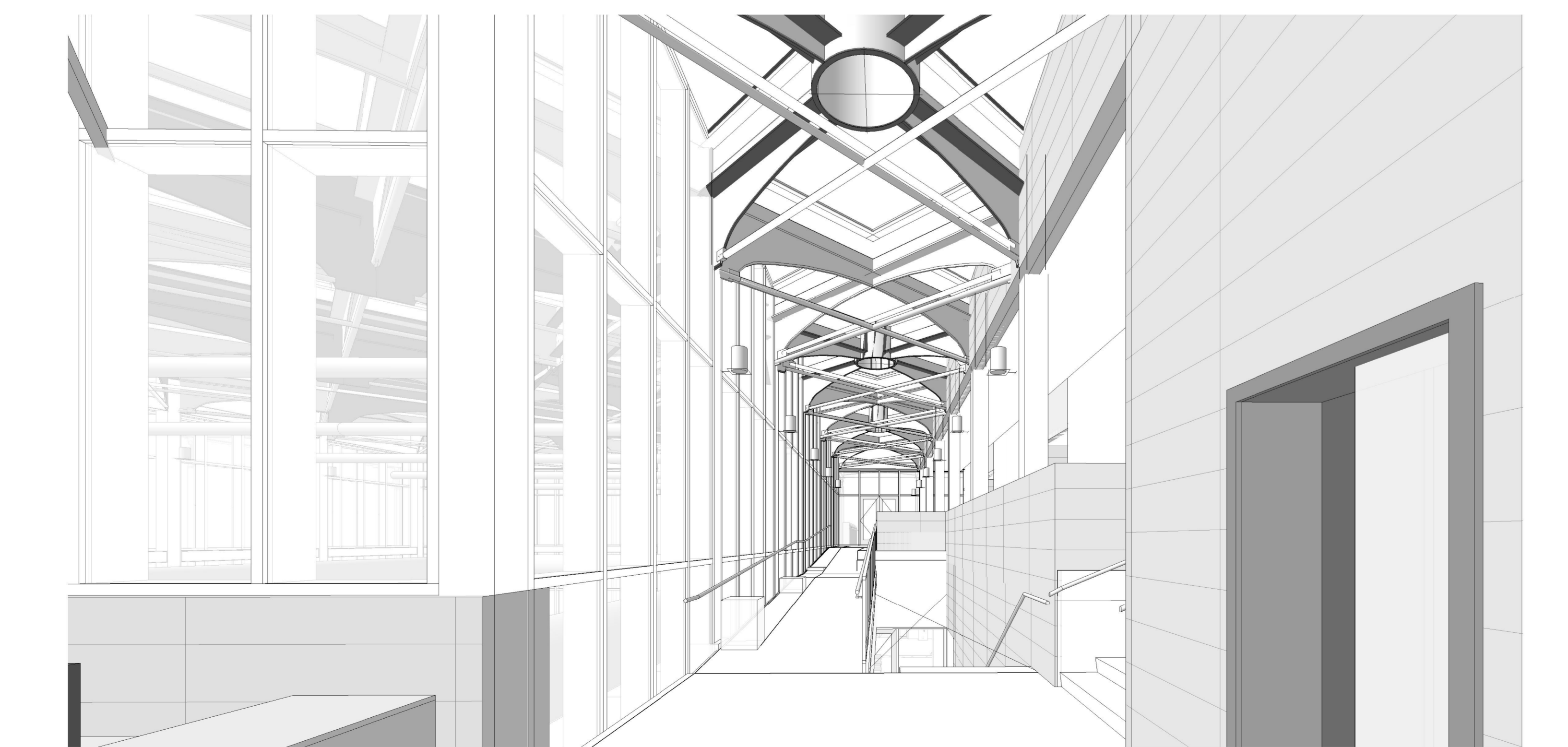


1 PERSPECTIVE VIEW FROM TOP OF RAMP



2 PERSPECTIVE VIEW OF POOL



3 PERSPECTIVE VIEW FROM ENTRY INTO LOBBY

DCRA APPROVAL STAMP



2121 WARD PLACE, NW
 4TH FLOOR
 WASHINGTON, DC 20037
 202 298 6700
 WWW.QUINNEVANS.COM

**McMillan
 Community
 Center**

2940 N Capitol St NW
 Washington, DC
 20002

QEA PROJECT #: 31610100

**PROJECT
 VIEWS**

SUPPLEMENTAL INFORMATION -
 FOR REFERENCE ONLY

07/20/15

REVISIONS

NO.	DESCRIPTION	DATE

A0020

GENERAL PLAN NOTES

1. INTERIOR PLAN DIMENSIONS ARE TO OUTSIDE FACE OF G.W.B. (U.N.O)
2. PAINT EXPOSED STRUCTURE UNLESS NOTED OTHERWISE.
3. ALL EQUIPMENT AND FURNISHING PROVIDED AND INSTALLED BY CONTRACTOR
4. LOCKER ROOM AND FITNESS ROOM PLAN LAYOUT PRELIMINARY, MAY BE REVISED BASED ON FURTHER OWNER INPUT

DCRA APPROVAL STAMP



2121 WARD PLACE, NW
 4TH FLOOR
 WASHINGTON, DC 20037

202 298 6700
 WWW.QUINNEVANS.COM

**McMillan
 Community
 Center**

2940 N Capitol St NW
 Washington, DC
 20002

QEA PROJECT #: 31610100

**FIRST
 FLOOR PLAN**

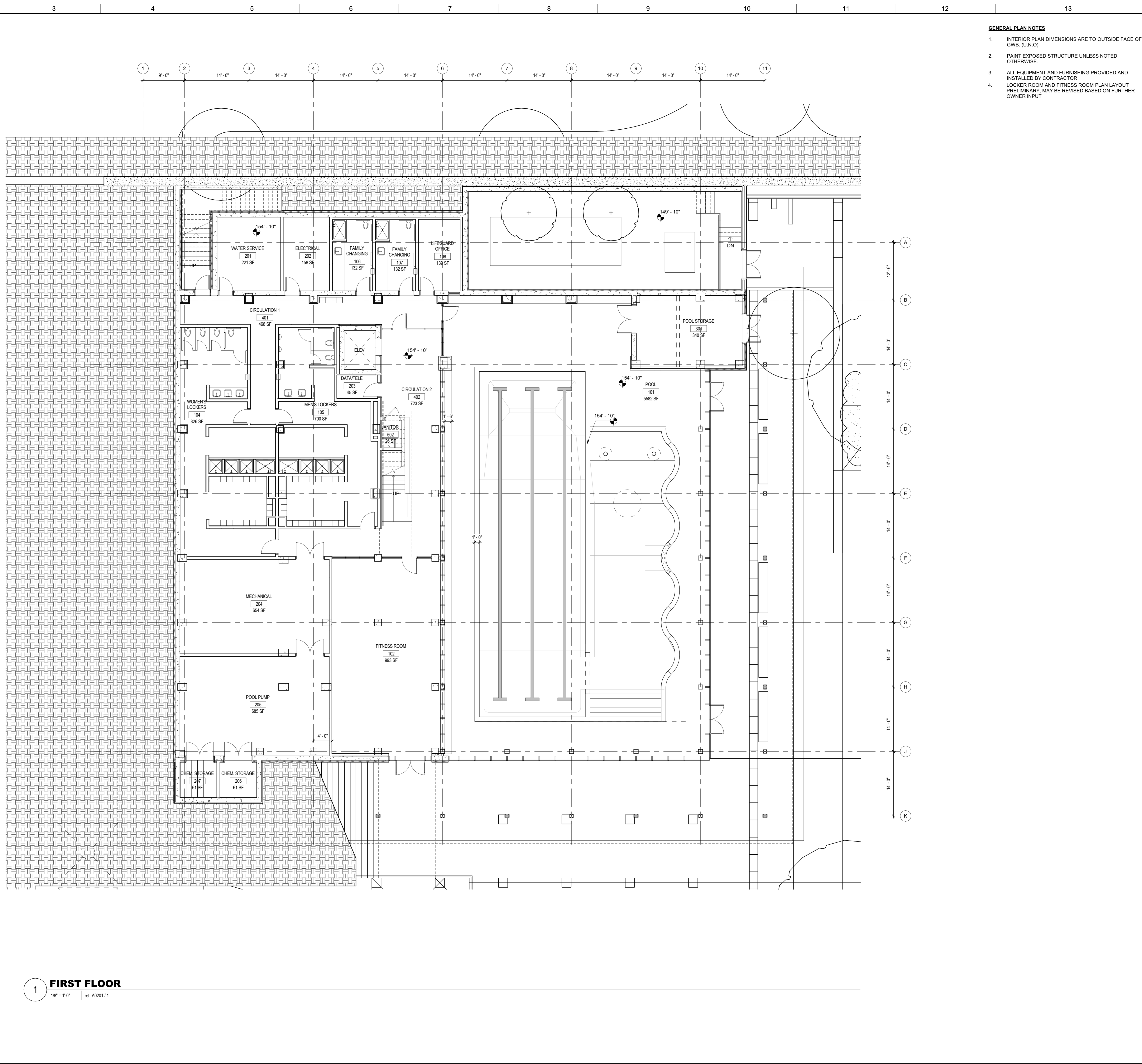
SUPPLEMENTAL INFORMATION -
 FOR REFERENCE ONLY

FOUNDATION TO GRADE
 03/03/17

REVISIONS

NO.	DESCRIPTION	DATE

A0101



1 FIRST FLOOR
 1/8" = 1'-0" ref: A0201/1

GENERAL PLAN NOTES

1. INTERIOR PLAN DIMENSIONS ARE TO OUTSIDE FACE OF G.W.B. (U.N.O)
2. PAINT EXPOSED STRUCTURE UNLESS NOTED OTHERWISE
3. ALL EQUIPMENT AND FURNISHING PROVIDED AND INSTALLED BY CONTRACTOR

DCRA APPROVAL STAMP



2121 WARD PLACE, NW
 4TH FLOOR
 WASHINGTON, DC 20037
 202 298 6700
 WWW.QUINNEVANS.COM

**McMillan
 Community
 Center**

2940 N Capitol St NW
 Washington, DC
 20002

QEA PROJECT #: 31610100

**SECOND
 FLOOR AND
 ENTRY PLAN**

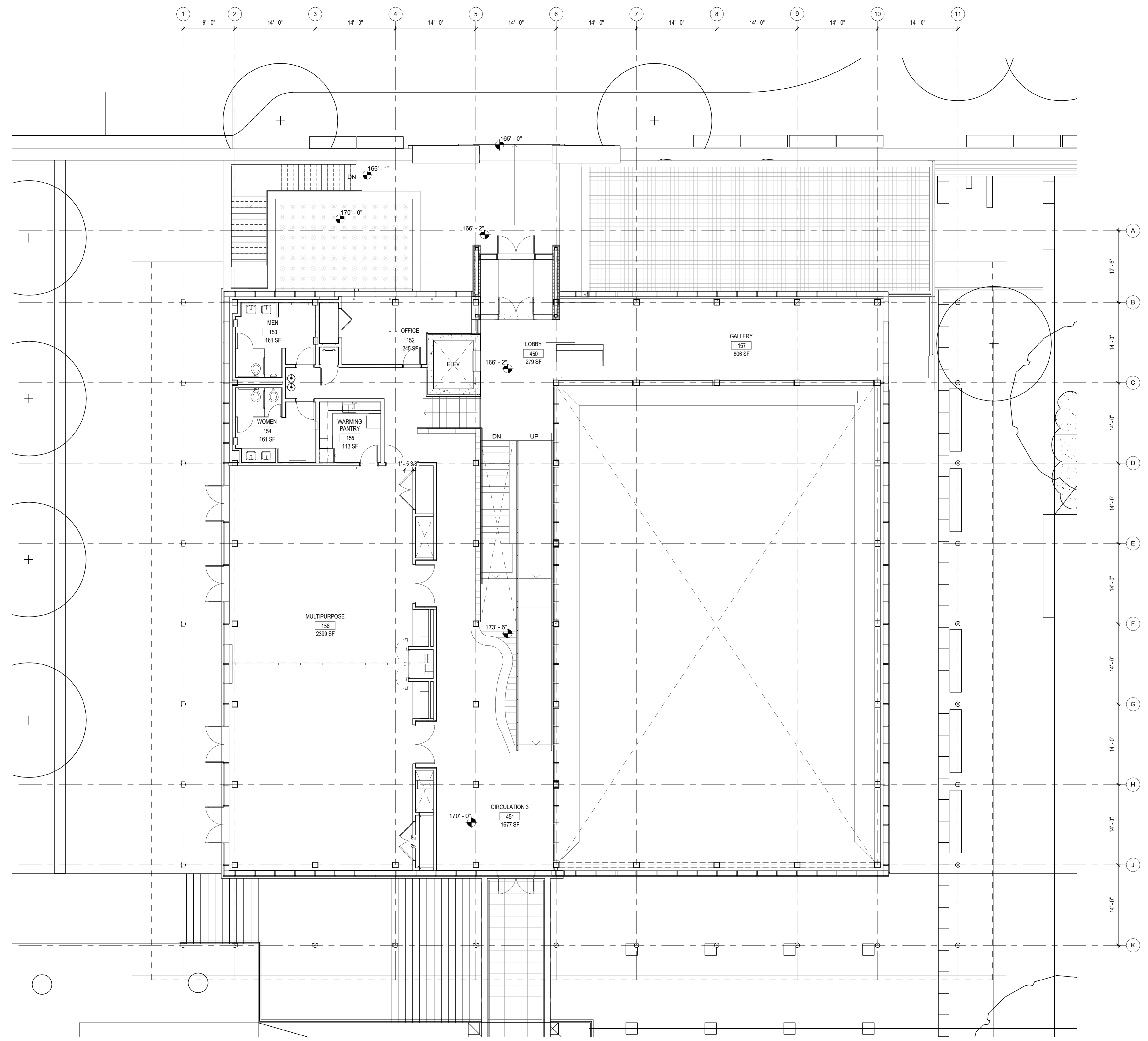
SUPPLEMENTAL INFORMATION -
 FOR REFERENCE ONLY

FOUNDATION TO GRADE
 03/03/17

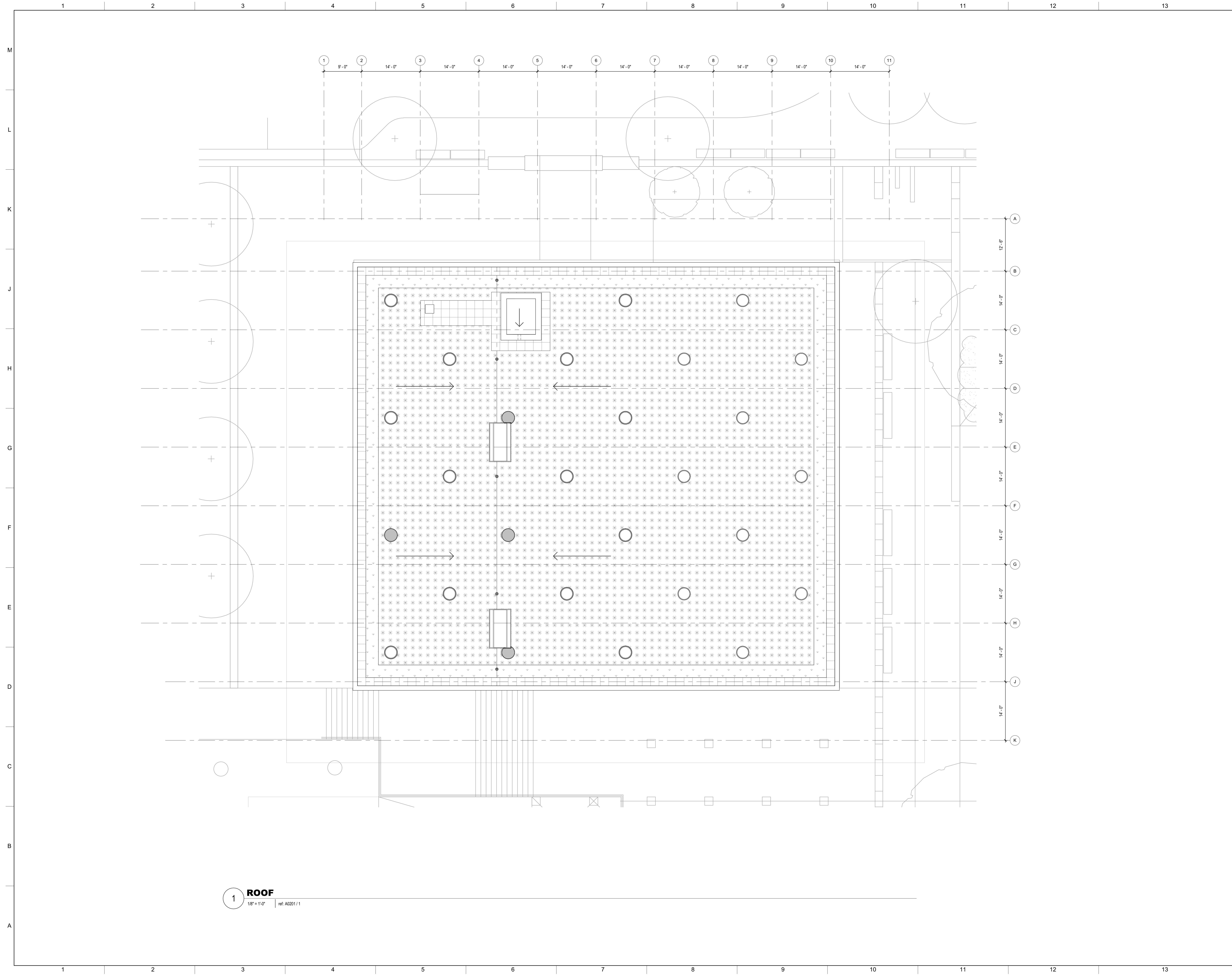
REVISIONS

NO.	DESCRIPTION	DATE

A0102



1 ENTRY LEVEL
 1/8" = 1'-0" ref: A0201/1



1 ROOF
 1/8" = 1'-0" ref: A020111

DCRA APPROVAL STAMP



2121 WARD PLACE, NW
 4TH FLOOR
 WASHINGTON, DC 20037
 202 298 6700
 WWW.QUINNEVANS.COM

**McMillan
 Community
 Center**

2940 N Capitol St NW
 Washington, DC
 20002

QEA PROJECT #: 31610100

ROOF PLAN

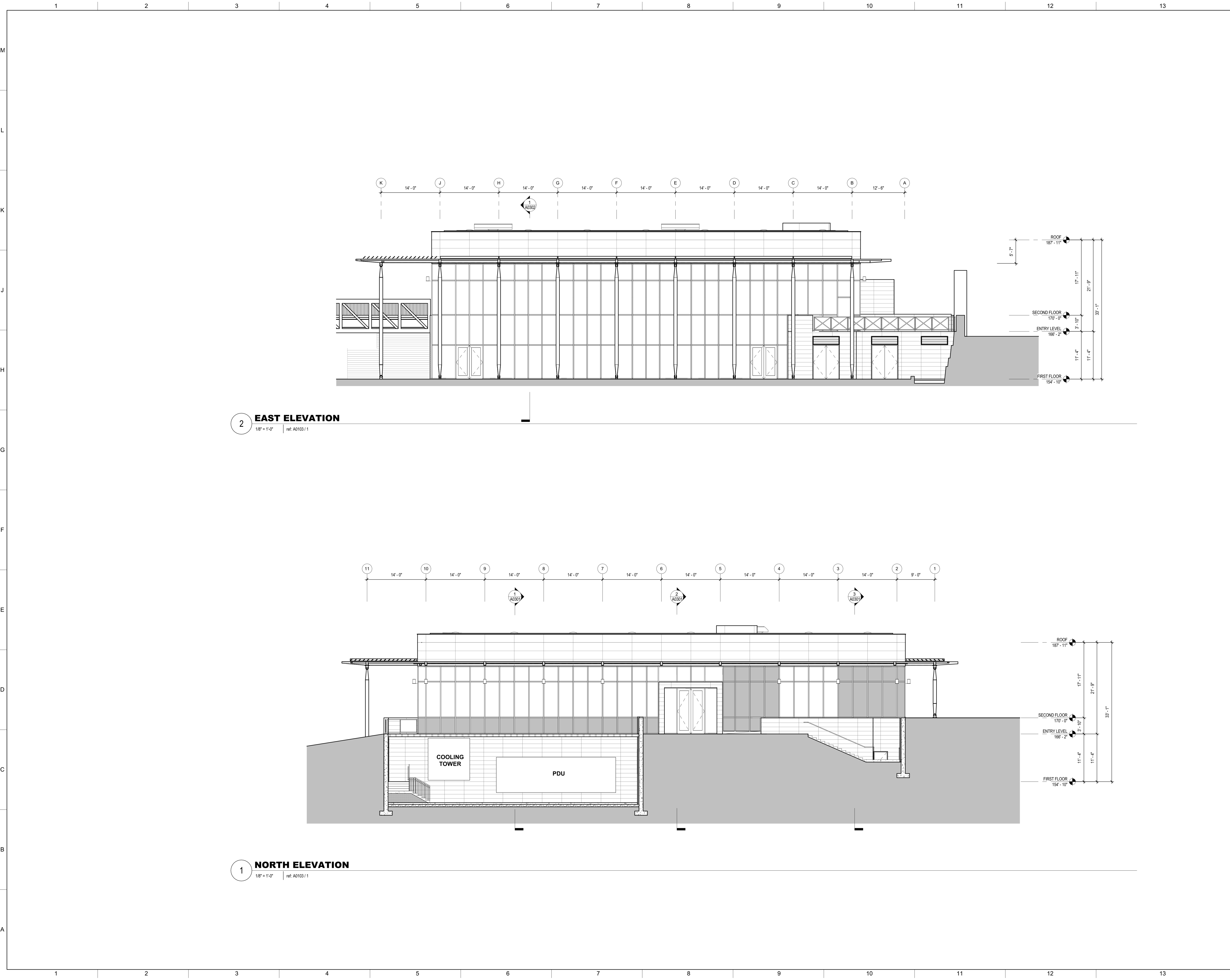
SUPPLEMENTAL INFORMATION -
 FOR REFERENCE ONLY

FOUNDATION TO GRADE
 03/03/17

REVISIONS

NO.	DESCRIPTION	DATE

A0103



2 EAST ELEVATION
 1/8" = 1'-0" ref: A0103 / 1

1 NORTH ELEVATION
 1/8" = 1'-0" ref: A0103 / 1

DCRA APPROVAL STAMP



2121 WARD PLACE, NW
 4TH FLOOR
 WASHINGTON, DC 20037
 202 298 6700
 WWW.QUINNEVANS.COM

**McMillan
 Community
 Center**

2940 N Capitol St NW
 Washington, DC
 20002

QEA PROJECT #: 31610100

**NORTH &
 EAST
 ELEVATIONS**

SUPPLEMENTAL INFORMATION -
 FOR REFERENCE ONLY

FOUNDATION TO GRADE
 03/03/17

REVISIONS

NO.	DESCRIPTION	DATE

A0201

DCRA APPROVAL STAMP



2121 WARD PLACE, NW
 4TH FLOOR
 WASHINGTON, DC 20037
 202 298 6700
 WWW.QUINNEVANS.COM

**McMillan
 Community
 Center**

2940 N Capitol St NW
 Washington, DC
 20002

QEA PROJECT #: 31610100

**SOUTH &
 WEST
 ELEVATIONS**

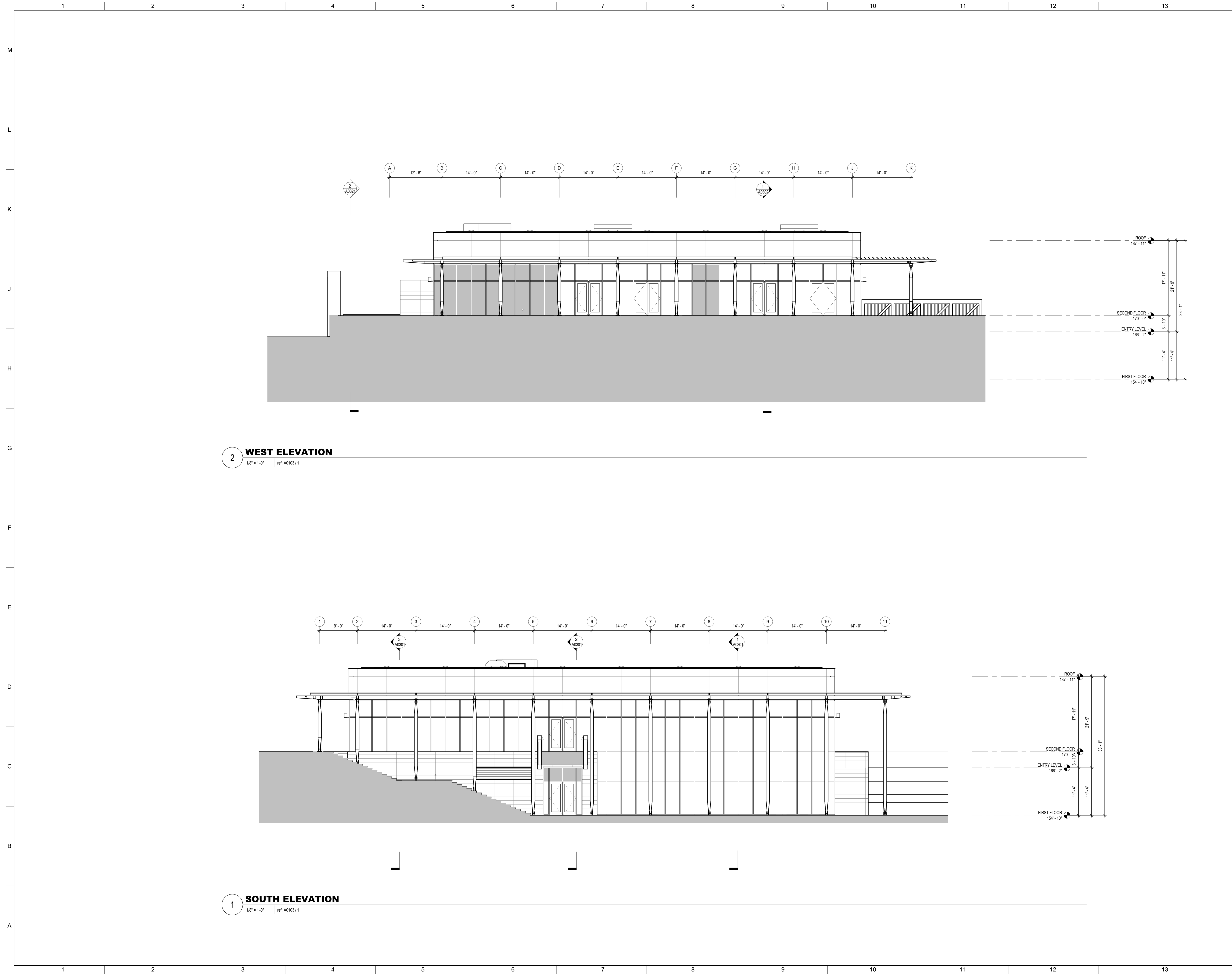
SUPPLEMENTAL INFORMATION -
 FOR REFERENCE ONLY

FOUNDATION TO GRADE
 03/03/17

REVISIONS

NO.	DESCRIPTION	DATE

A0202



2 WEST ELEVATION
 1/8" = 1'-0" ref: A0103 / 1

1 SOUTH ELEVATION
 1/8" = 1'-0" ref: A0103 / 1

DCRA APPROVAL STAMP



2121 WARD PLACE, NW
 4TH FLOOR
 WASHINGTON, DC 20037
 202 298 6700
 WWW.QUINNEVANS.COM

McMillan Community Center

2940 N Capitol St NW
 Washington, DC 20002

QEA PROJECT #: 31610100

BUILDING SECTIONS

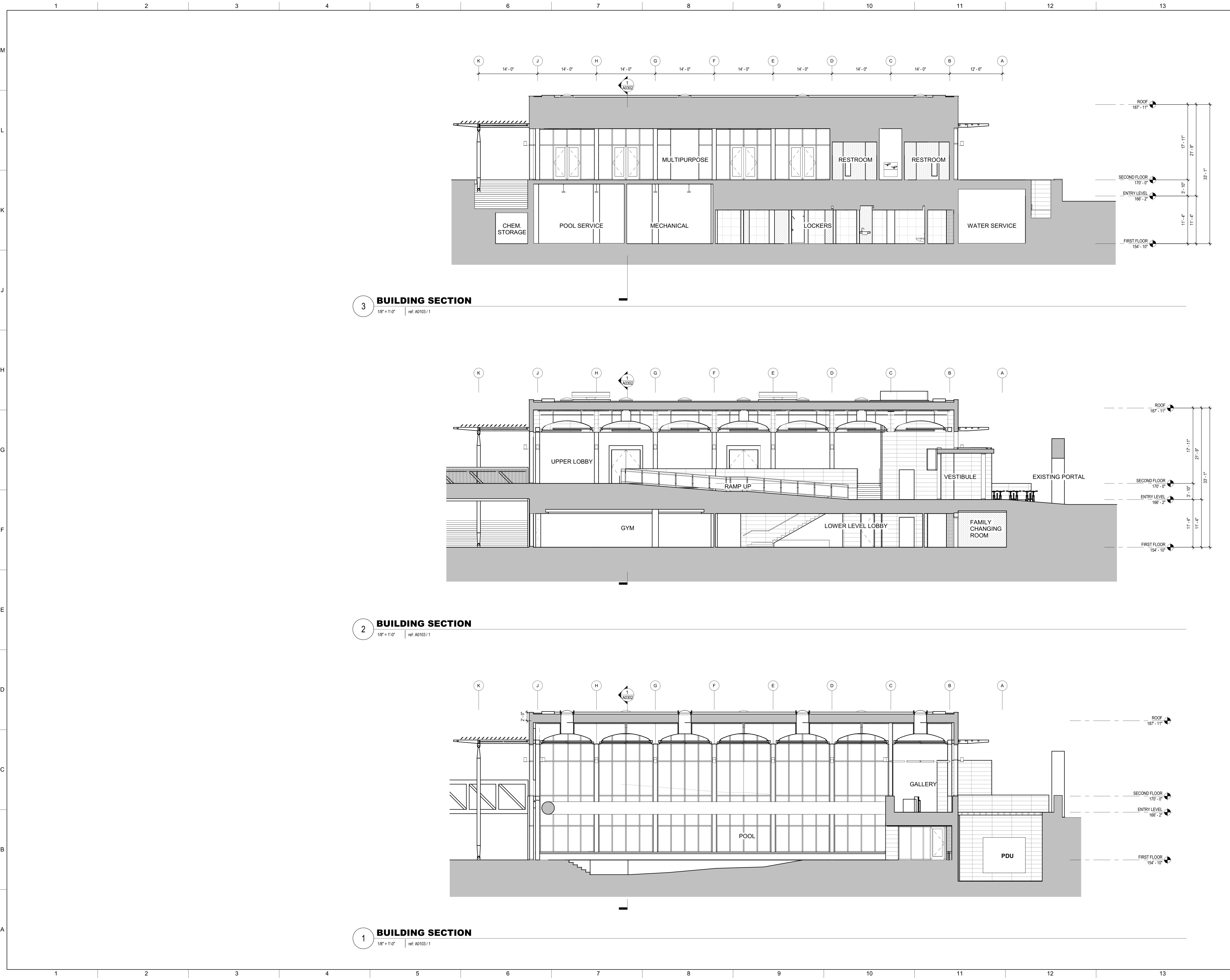
SUPPLEMENTAL INFORMATION - FOR REFERENCE ONLY

FOUNDATION TO GRADE
 03/03/17

REVISIONS

NO.	DESCRIPTION	DATE

A0301



3 BUILDING SECTION
 1/8" = 1'-0" ref: A0103 / 1

2 BUILDING SECTION
 1/8" = 1'-0" ref: A0103 / 1

1 BUILDING SECTION
 1/8" = 1'-0" ref: A0103 / 1

DCRA APPROVAL STAMP



2121 WARD PLACE, NW
 4TH FLOOR
 WASHINGTON, DC 20037
 202 298 6700
 WWW.QUINNEVANS.COM

**McMillan
 Community
 Center**

2940 N Capitol St NW
 Washington, DC
 20002

QEA PROJECT #: 31610100

**BUILDING
 SECTIONS**

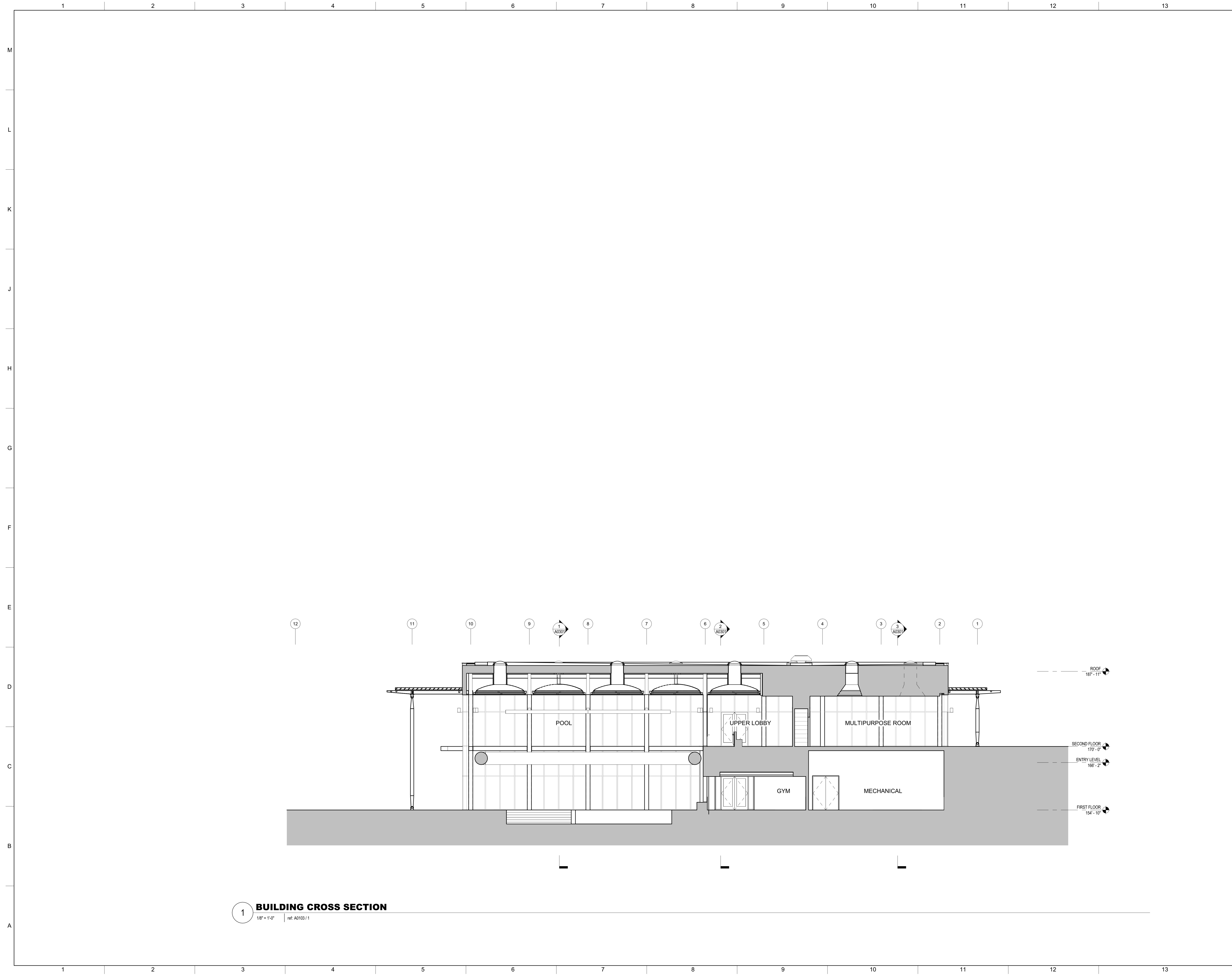
SUPPLEMENTAL INFORMATION -
 FOR REFERENCE ONLY

FOUNDATION TO GRADE
 03/03/17

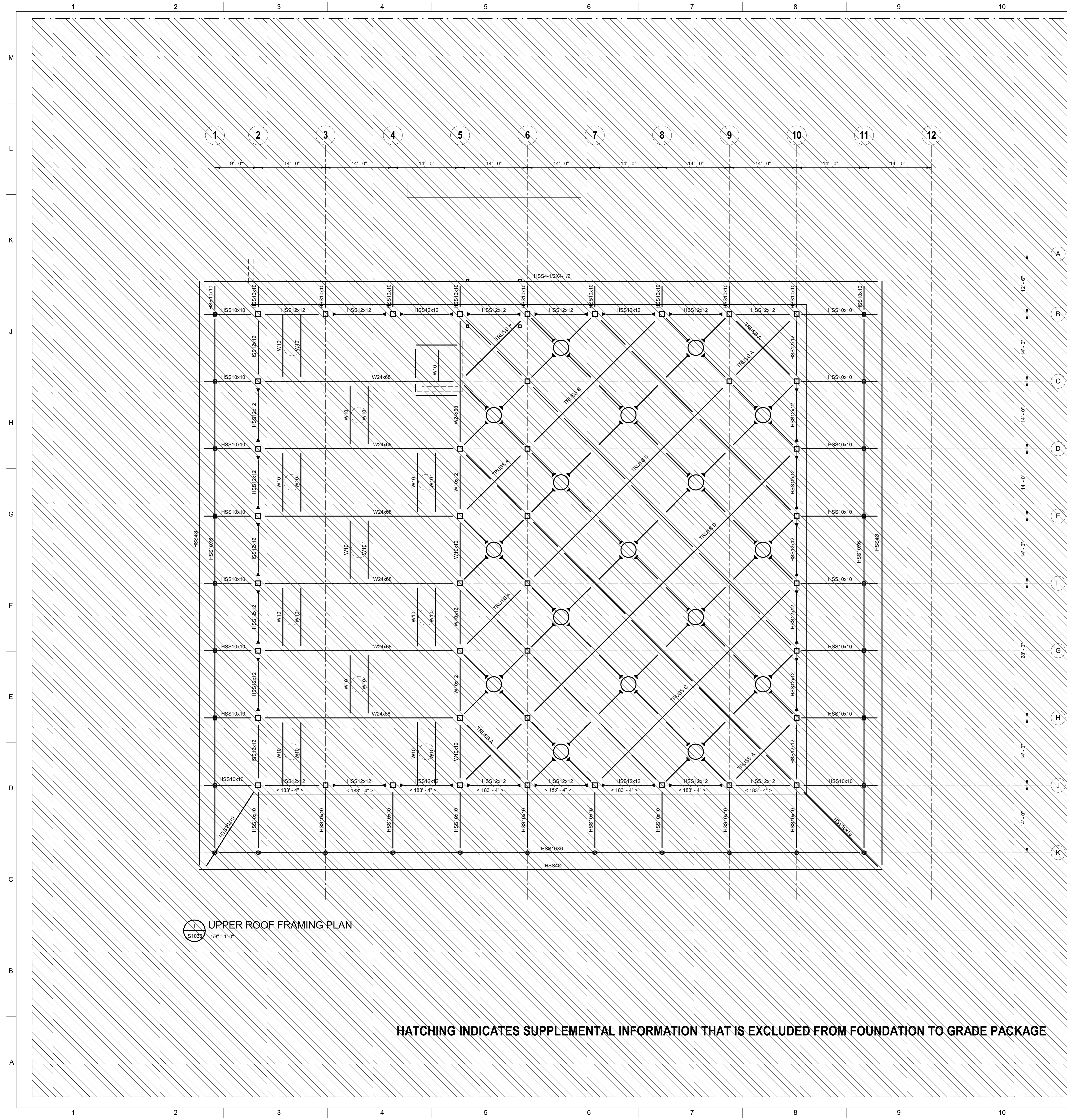
REVISIONS

NO.	DESCRIPTION	DATE

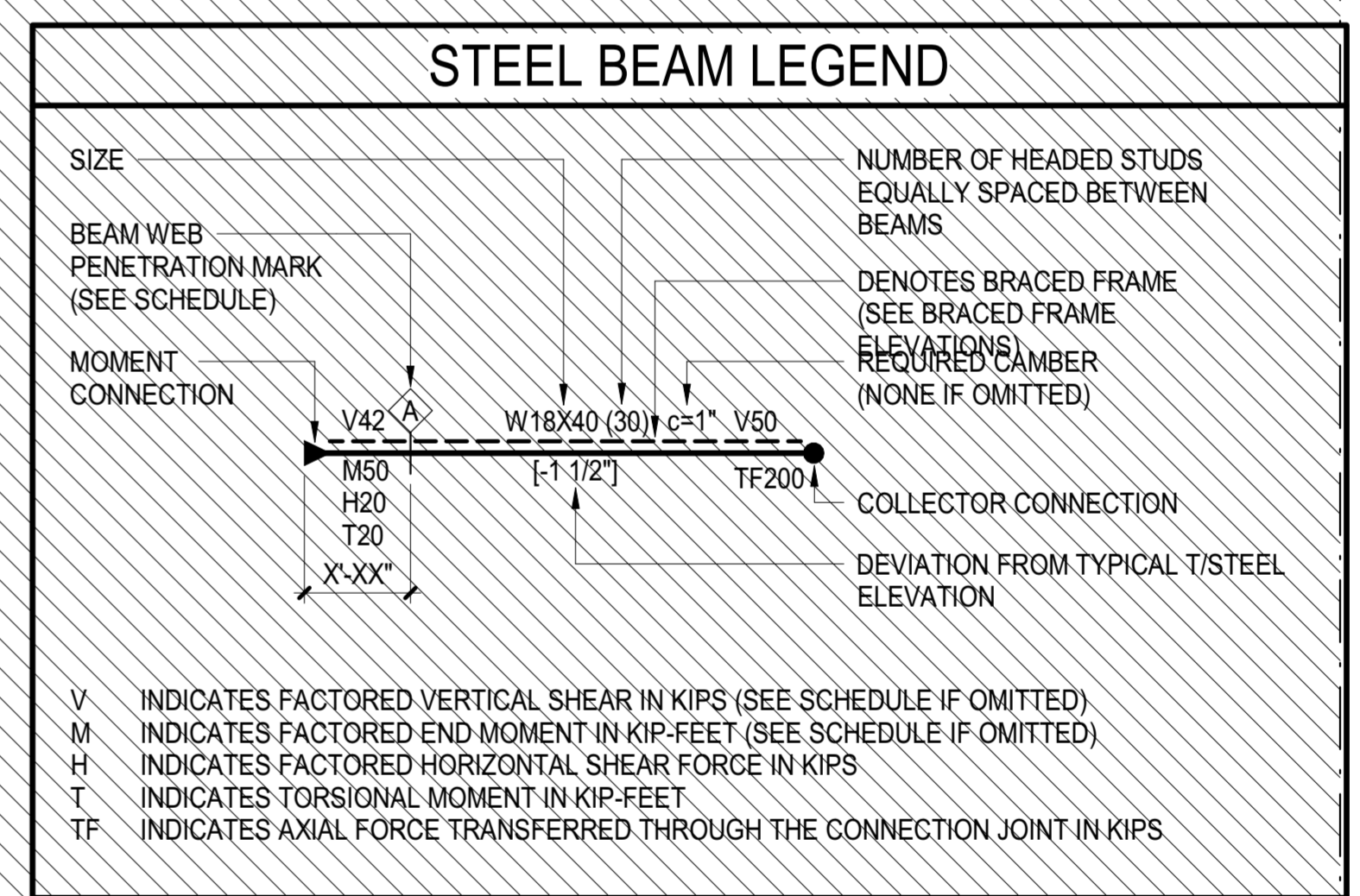
A0302



1 BUILDING CROSS SECTION
 1/8" = 1'-0" ref: A0103 / 1



- SHEET NOTES:**
- T/STRUCTURAL SLAB EL. - 187'-5 1/2" UON THUS:
 X - INDICATES CHANGE IN T/STRUCTURAL SLAB ELEVATION
 - T/STEEL EL. UON
 - INDICATES DECK SPAN DIRECTION
 - FOR ADDITIONAL INFORMATION REFER TO THE FOLLOWING DRAWINGS:
 DRAWING LISTS, GENERAL NOTES, AND 60 SERIES DRAWINGS
 LOADING DIAGRAMS
 TYPICAL FOUNDATION DETAILS 52 SERIES DRAWINGS
 LATERAL SYSTEM ELEVATIONS, CONNECTION 93 SERIES DRAWINGS
 FORCES, AND DETAILS
 CONCRETE SUPERSTRUCTURE SCHEDULES 54 SERIES DRAWINGS
 AND DETAILS
 STEEL SUPERSTRUCTURE SCHEDULES AND 55 SERIES DRAWINGS
 DETAILS
 MASONRY DETAILS 56 SERIES DRAWINGS
 - AT STAIRS, SEE TYPICAL DETAILS FOR TC, TCS, AND KICKER REQUIREMENTS
 - SYMBOLS:
 INDICATES MOMENT CONNECTION
 INDICATES DEEP BEAM BOTTOM FLANGE BRACING CONNECTION
 SEE DETAIL
 INDICATES FULL HEIGHT FITTED STIFFENER CONNECTION
 SEE DETAIL
 INDICATES FULL HEIGHT UNFITTED STIFFENER CONNECTION
 SEE DETAIL
 INDICATES HANGER ABOVE/BELOW, TENSION AXIAL FORCE IN HANGER BELOW
 INDICATED WHERE APPLICABLE, SEE DETAIL
 INDICATES SLOPE IN TOP OF SLAB
 - NOTATIONS:
 BF INDICATES LATERAL BRACED FRAME
 SEE BRACED FRAME ELEVATIONS FOR BEAM INFORMATION AND CONNECTION FORCES
 CA/CB INDICATES COLUMN ABOVE/BELOW, COMPRESSION AXIAL FORCE IN COLUMN INDICATED WHERE APPLICABLE, SEE DETAIL
 DB INDICATES ELEVATOR DIVIDER BEAM (NOT FIREPROOFED)
 HA/HB INDICATES HANGER ABOVE/BELOW, TENSION AXIAL FORCE IN HANGER BELOW
 INDICATED WHERE APPLICABLE, SEE DETAIL
 MF INDICATES LATERAL MOMENT FRAME
 SEE MOMENT FRAME ELEVATIONS FOR BEAM INFORMATION AND CONNECTION FORCES
 INDICATES PLATE GIRDER TYPE, SEE SXX FOR PLATE GIRDER SCHEDULE
 PG INDICATES TORSIONAL CONNECTION FOR STAIR, SEE DETAIL
 TR INDICATES COLUMN FROM ABOVE TRANSFERS, COMPRESSION AXIAL FORCE IN COLUMN INDICATED WHERE APPLICABLE, SEE DETAIL



UPPER ROOF FRAMING PLAN
 S1030 1/8" = 1'-0"

HATCHING INDICATES SUPPLEMENTAL INFORMATION THAT IS EXCLUDED FROM FOUNDATION TO GRADE PACKAGE

DCRA APPROVAL STAMP



2121 WARD PLACE, NW
 4TH FLOOR
 WASHINGTON, DC 20037
 202 298 6700
 WWW.QUINNEVANS.COM

Thornton Tomasetti
 Thornton Tomasetti, Inc.
 2000 L Street, NW, Suite 600
 Washington, DC 20036-4913
 T 202.580.6300 F 202.580.6301

MCMILLAN COMMUNITY CENTER

2940 N Capitol St, NW
 Washington, DC 20002

QEA PROJECT #: 31610100
 TT PROJECT #: M16242.00

ROOF FRAMING PLAN

SUPPLEMENTAL INFORMATION - FOR REFERENCE ONLY

FOUNDATION TO GRADE
 03/03/17

REVISIONS		
NO.	DESCRIPTION	DATE

S1030