

These plans are conditionally approved as submitted or noted during plan review and are subject to field inspection. Approved plans must be kept on site and are needed for all inspections. No changes or modifications to these plans. Changes require a revision permit with the revised plans. Trade Permits are required for trade work. e.g. Electrical or Plumbing

Plumbing Review - Syed Hashmi - 08-23-2019
 Structural Review - Elton Debesai - 08-23-2019
 DCE SE-SW Review - Nykia Barnes - 08-23-2019
 DCE GAR Review - Nykia Barnes - 08-23-2019
 Water Review - Vahid Elvandi - 08-23-2019

DCRA APPROVAL STAMP



2121 WARD PLACE, NW
 4TH FLOOR
 WASHINGTON, DC 20037

202 298 6700
 WWW.QUINNEVANS.COM

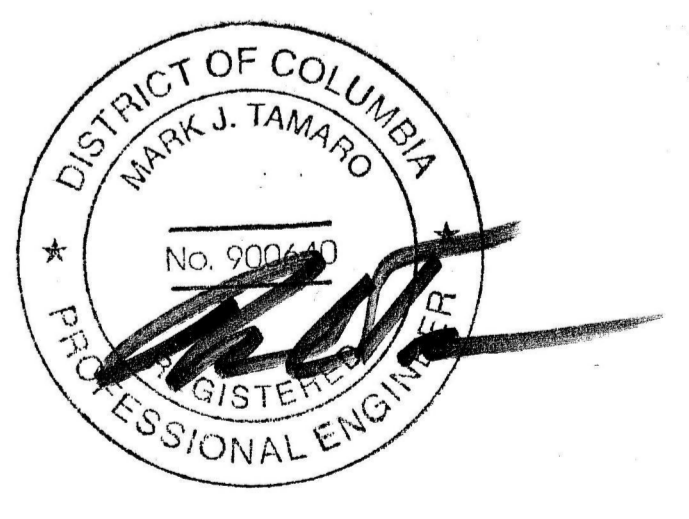
Thornton Tomasetti
 Thornton Tomasetti, Inc.
 2000 L Street, NW, Suite 600
 Washington, DC 20036-4913
 T 202.580.6300 F 202.580.6301

MCMILLAN COMMUNITY CENTER

2940 N Capitol St, NW
 Washington, DC 20002

QEA PROJECT #: 31610100
 TT PROJECT #: M16242.00

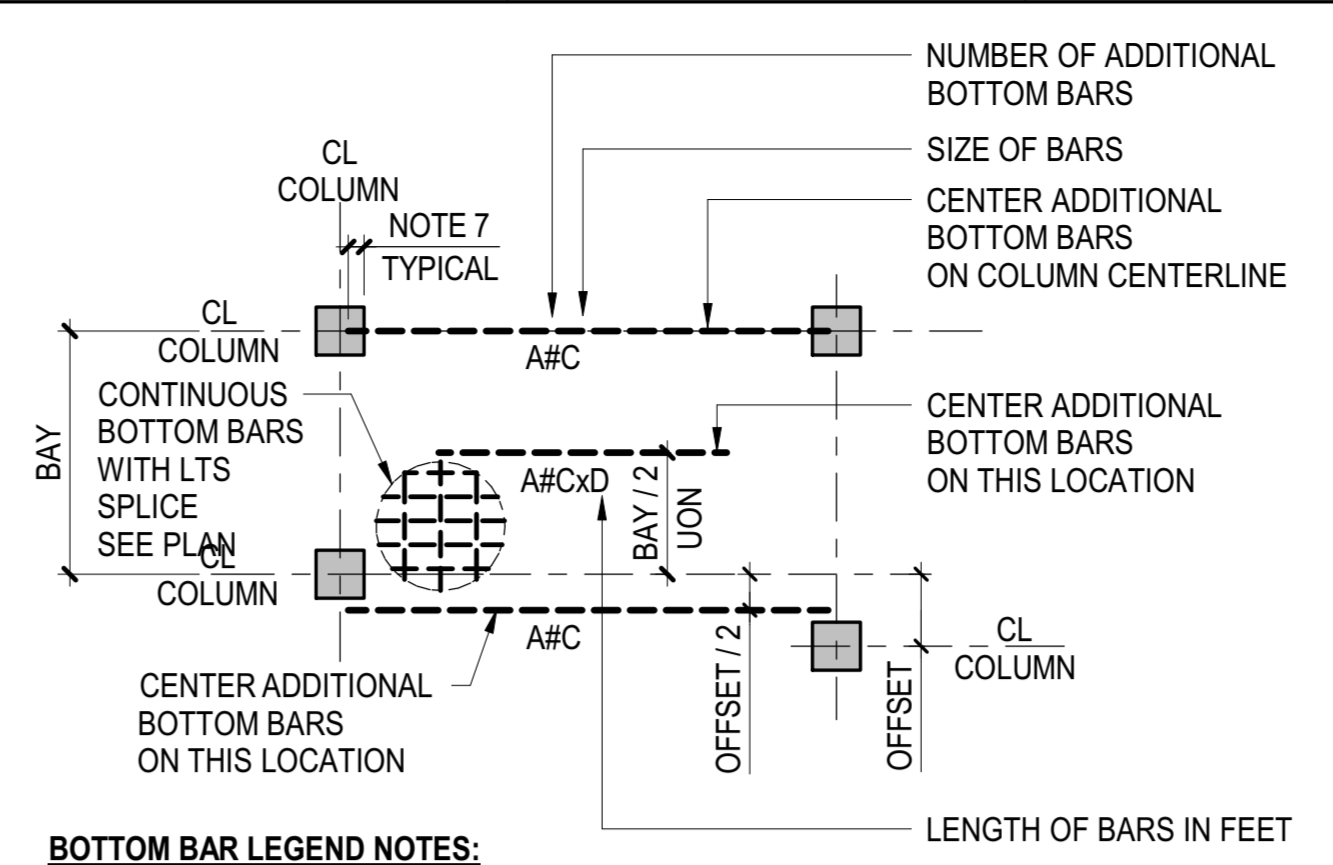
2ND FLOOR AND ENTRY LEVEL FRAMING PLAN



FOUNDATION TO GRADE
 03/03/17

NO.	DESCRIPTION	DATE

S1020
 Board of Zoning Adjustment
 CASE NO. S10191
 EXHIBIT NO. 5F

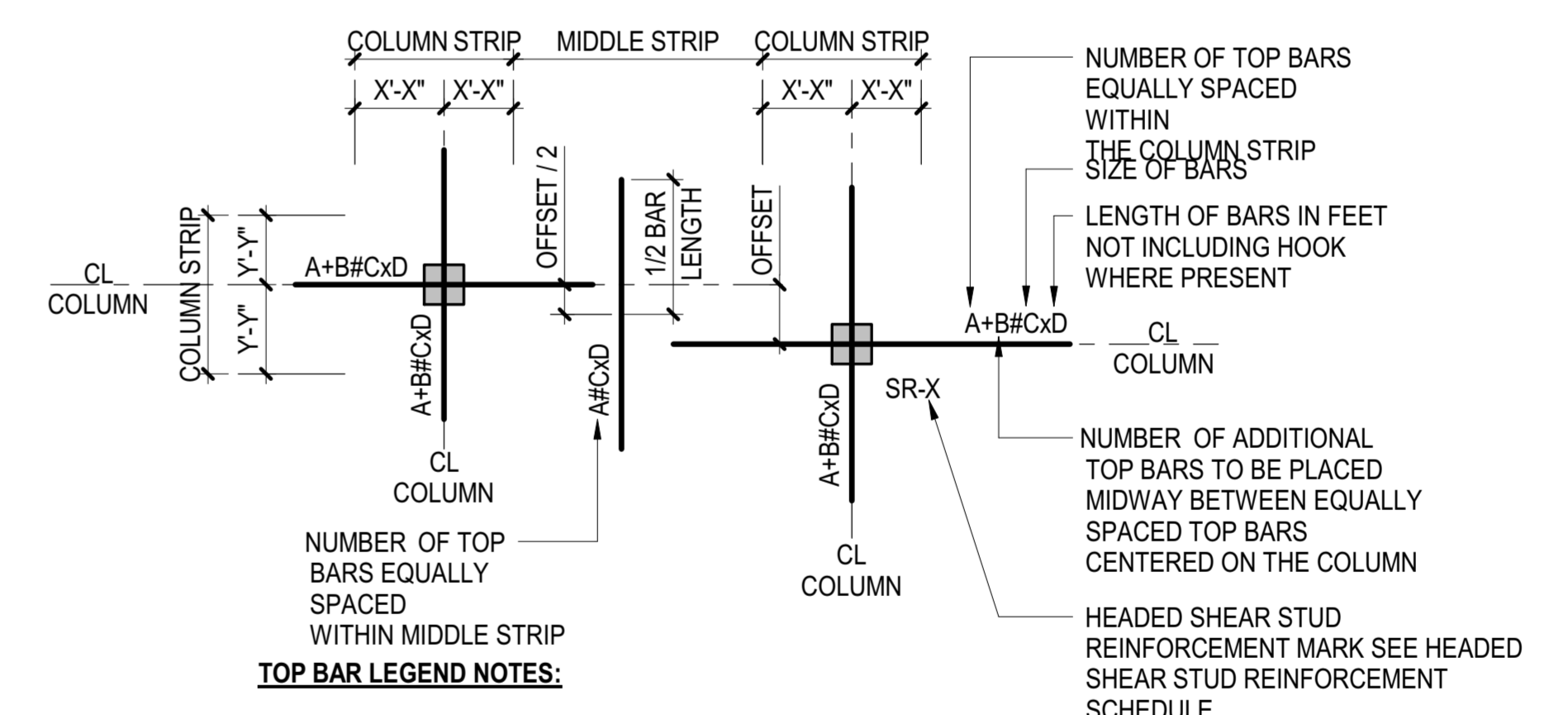
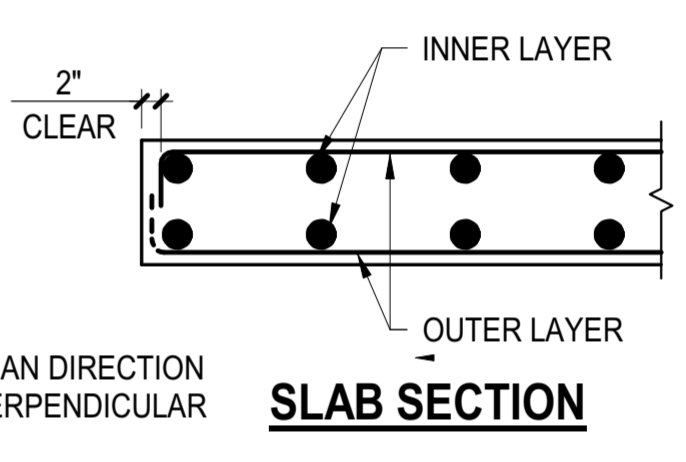


- BOTTOM BAR LEGEND NOTES:**
- NUMBER / SIZE / LENGTH OF BARS SHOWN IN ONE DIRECTION ONLY SAME NOTATIONS APPLY IN PERPENDICULAR DIRECTION
 - CENTERLINE OF COLUMN MAY NOT COINCIDE W/ GRIDLINES SEE DRAWINGS FOR OFFSET DIMENSION
 - PLACE ADDITIONAL BARS AT SAME SPACING OF CONTINUOUS BARS AND MIDWAY BETWEEN CONTINUOUS BARS UON
 - ALL CONTINUOUS BOTTOM BARS TO EXTEND WITHIN 2 INCHES OF SLAB EDGE
 - A MINIMUM OF 2 BOTTOM BARS MUST EXTEND THROUGH THE COLUMN JOINT IN EACH DIRECTION
 - AT EXTERIOR SUPPORT HOOK 2 BOTTOM BARS THAT PASS THROUGH COLUMN WITH 90° STANDARD HOOK OR IF NECESSARY USE 180° STANDARD HOOK

TWO-WAY SLAB BOTTOM BAR REINFORCEMENT LEGEND
 NOT TO SCALE

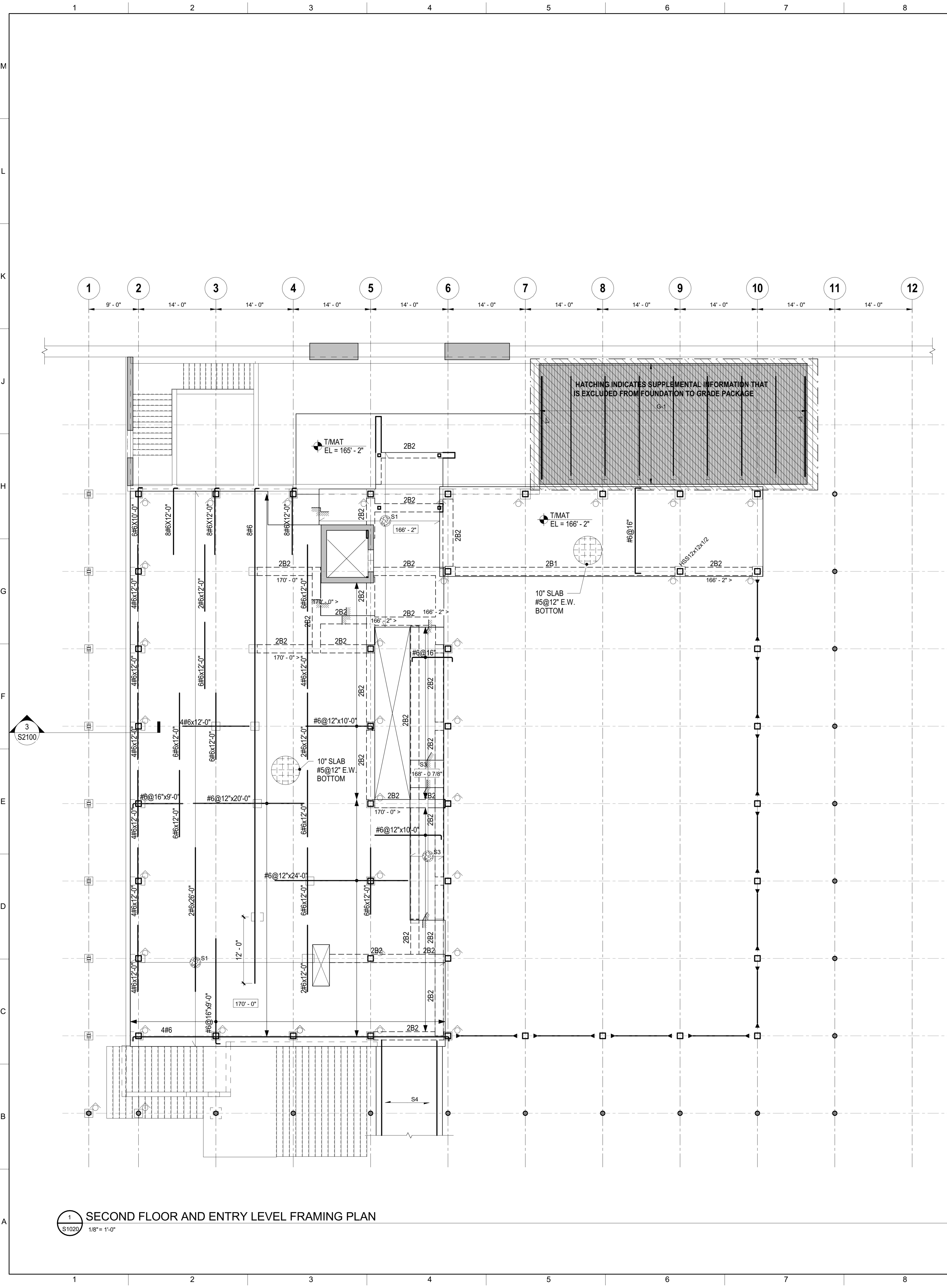
- SHEET NOTES:**
- TOP OF SLAB AND TOP OF BEAM EL. 170'-0" UON THUS:
 X - INDICATES CHANGE IN STRUCTURAL SLAB ELEVATION
 - SLABS TO BE THICK NORMALWEIGHT CONCRETE TWO-WAY SLAB WITH DROP PANELS, TYPICAL UON
 - SEE GENERAL NOTES FOR CONCRETE COMPRESSIVE STRENGTH
 - SEE DRAWING FOR SLAB REINFORCEMENT
 - FOR ADDITIONAL INFORMATION REFER TO THE FOLLOWING DRAWINGS:
 DRAWING LISTS, GENERAL NOTES AND LOADING DIAGRAMS S0 SERIES DRAWINGS
 TYPICAL FOUNDATION DETAILS S2 SERIES DRAWINGS
 LATERAL SYSTEM ELEVATIONS, CONNECTION FORCES AND DETAILS S3 SERIES DRAWINGS
 CONCRETE SUPERSTRUCTURE SCHEDULES AND DETAILS S4 SERIES DRAWINGS
 STEEL SUPERSTRUCTURE SCHEDULES AND DETAILS S5 SERIES DRAWINGS
 MASONRY DETAILS S6 SERIES DRAWINGS
 - SYMBOLS:
 Y - INDICATES ONE-WAY SLAB Y" THICK AND SPAN DIRECTION
 SX - INDICATES ONE-WAY SLAB SPAN DIRECTION SEE ONE-WAY SCHEDULE AND ONE-WAY SLAB DETAILS
 UP - INDICATES SLOPE IN TOP OF SLAB
 - NOTATIONS:
 CA / CB - INDICATES COLUMN ABOVE / BELOW
 DB - INDICATES ELEVATOR DIVIDER BEAM (NOT FIREPROOFED)
 TR - INDICATES COLUMN FROM ABOVE TRANSFERS

- REINFORCEMENT PLAN NOTES:**
- SEE DRAWING SX-XXX FOR FRAMING PLAN
 - SLAB BOTTOM BAR CLEAR COVER "X"
 - SLAB TOP BAR CLEAR COVER
 - T/SLAB ELEVATION SEE FRAMING PLAN
 - TWO-WAY SLAB BAR PLACEMENT:
 1. DIRECTION OUTER LAYER
 2. DIRECTION INNER LAYER
 - ONE-WAY SLAB BAR PLACEMENT:
 1. TOP AND BOTTOM BARS PARALLEL TO SPAN DIRECTION
 2. SHRINKAGE AND TEMPERATURE BARS PERPENDICULAR TO SPAN DIRECTION
 - SEE TYPICAL SLAB DETAILS
 - FOR COLUMN STRIP WIDTH SEE TOP BARS LEGEND
 - FOR SLAB CORNERS SUPPORTED BY BEAMS OR WALLS, SEE TYPICAL BEAM / WALL SUPPORTED SLAB EXTERIOR CORNER DETAIL
 - SR-X INDICATES STUDRAIL. SEE STUDRAIL DETAILS



- TOP BAR LEGEND NOTES:**
- NUMBER/SIZE/LENGTH OF MIDDLE STRIP BARS SHOWN IN ONE DIRECTION ONLY SAME NOTATION APPLIES IN PERPENDICULAR DIRECTION
 - CENTERLINE OF COLUMN MAY NOT COINCIDE W/ GRIDLINES SEE DRAWINGS FOR OFFSET DIMENSION
 - HOOK ALL TOP BARS THAT PASS THROUGH COLUMN AT EXTERIOR SUPPORT WITH 90° STANDARD HOOK OR IF NECESSARY USE 180° STANDARD HOOK

TWO-WAY SLAB TOP BAR REINFORCEMENT LEGEND
 NOT TO SCALE



08/20/19 11:42:58 PM
 C:\Users\jgibson\OneDrive\Documents\Projects\2019\1010188.FTD
 Permit\FD1800040_MCMILLAN_Community_Ctr