

These plans are conditionally approved as submitted or noted during plan review and are subject to field inspection. Approved plans must be kept on site and are needed for all inspections. No changes or modifications to these plans. Changes require a revision permit with the revised plans. Trade Permits are required for trade work. e.g. Electrical or Plumbing

Plumbing Review - Syed Hashmi - 08-23-2019
 Structural Review - Elton Debesai - 08-23-2019
 DCEE SE-SW Review - Nykia Barnes - 08-23-2019
 DCEE GAR Review - Nykia Barnes - 08-23-2019
 DC Water Review - Vahid Shariati - 08-23-2019

SHEET NOTES:

- SEE GENERAL NOTES FOR CONCRETE COMPRESSIVE STRENGTH
- FOR ADDITIONAL INFORMATION REFER TO THE FOLLOWING DRAWINGS:

| | |
|--|--------------------|
| DRAWING LISTS, GENERAL NOTES AND LOADING DIAGRAMS | S0 SERIES DRAWINGS |
| TYPICAL FOUNDATION DETAILS | S2 SERIES DRAWINGS |
| LATERAL SYSTEM ELEVATIONS, CONNECTION FORCES AND DETAILS | S3 SERIES DRAWINGS |
| CONCRETE SUPERSTRUCTURE SCHEDULES AND DETAILS | S4 SERIES DRAWINGS |
| STEEL SUPERSTRUCTURE SCHEDULES AND DETAILS | S5 SERIES DRAWINGS |
| MASONRY DETAILS | S6 SERIES DRAWINGS |

DCRA APPROVAL STAMP



2121 WARD PLACE, NW
 4TH FLOOR
 WASHINGTON, DC 20037
 202 298 6700
 WWW.QUINNEVANS.COM

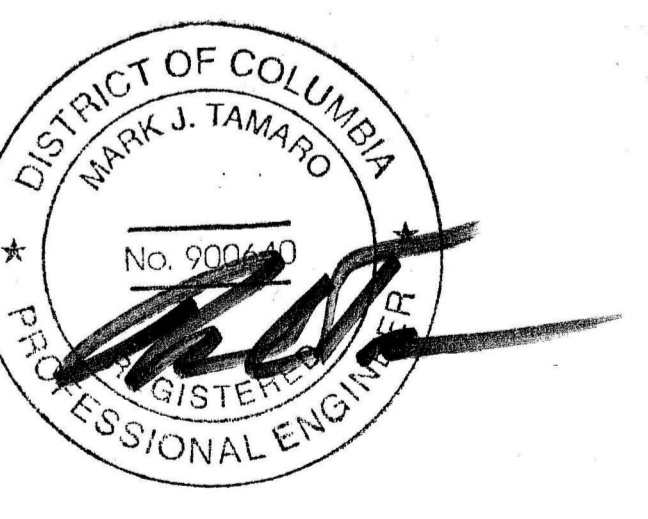
Thornton Tomasetti
 Thornton Tomasetti, Inc.
 2000 L Street, NW, Suite 600
 Washington, DC 20036-4913
 T 202.580.6300 F 202.580.6301

MCMILLAN COMMUNITY CENTER

2940 N Capitol St, NW
 Washington, DC 20002

QEA PROJECT #: 31610100
 TT PROJECT #: M16242.00

1ST FLOOR FRAMING PLAN



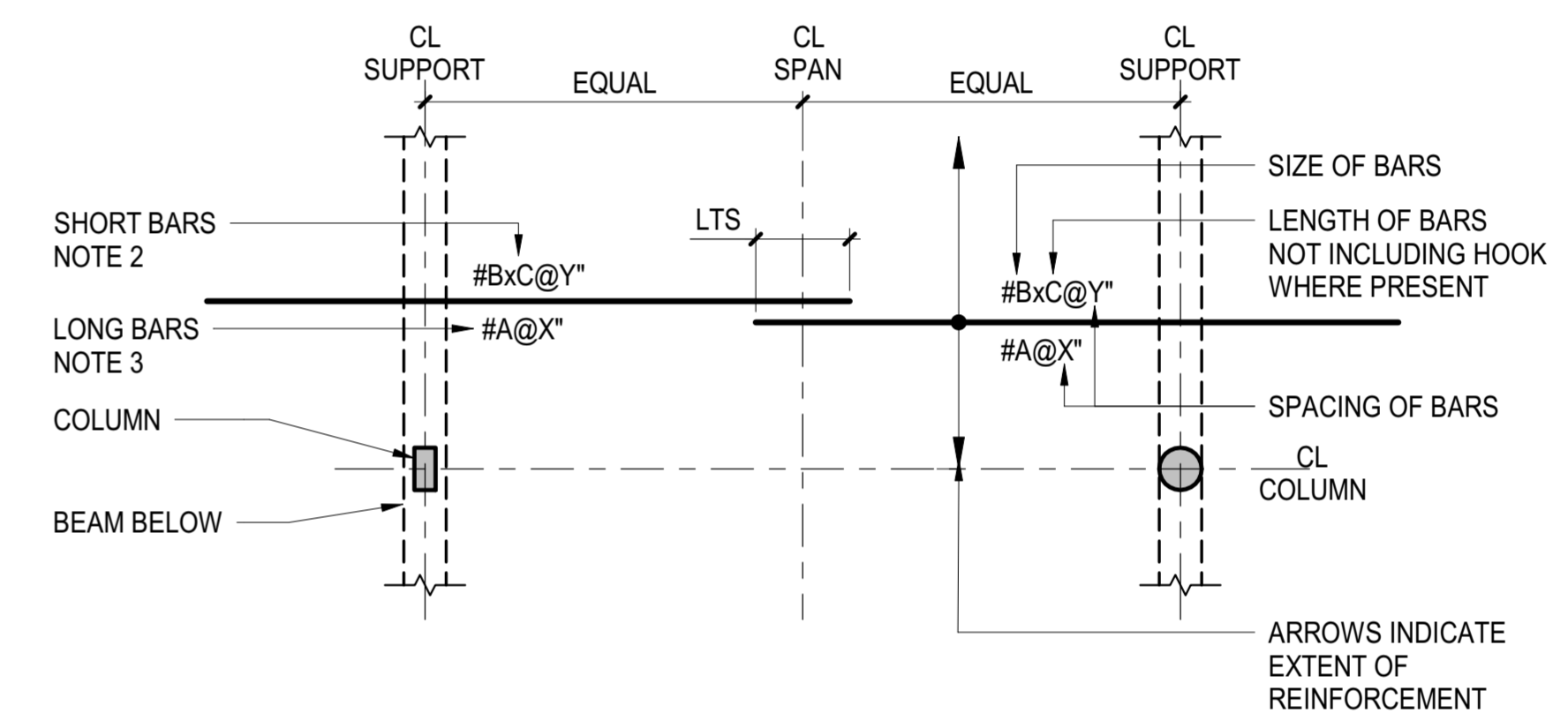
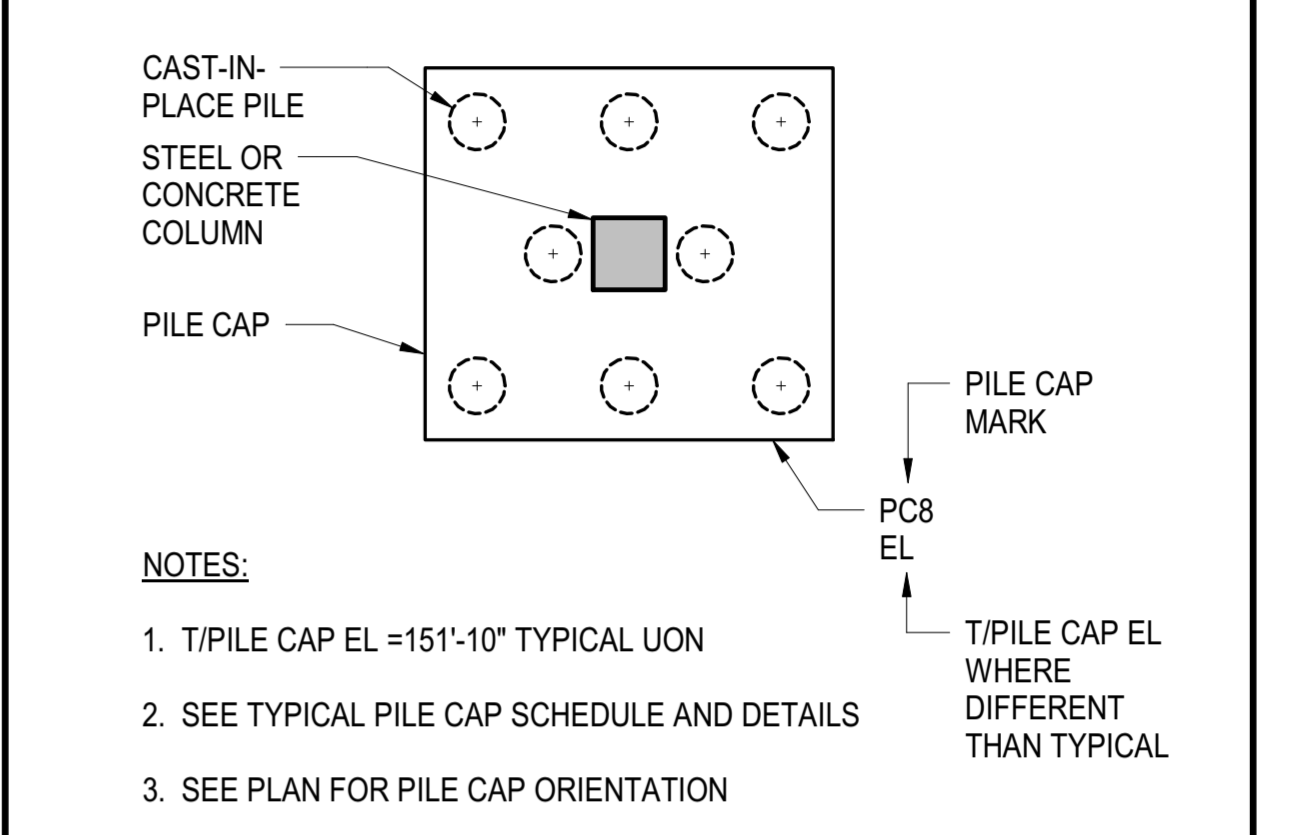
FOUNDATION TO GRADE
 03/03/17

REVISIONS

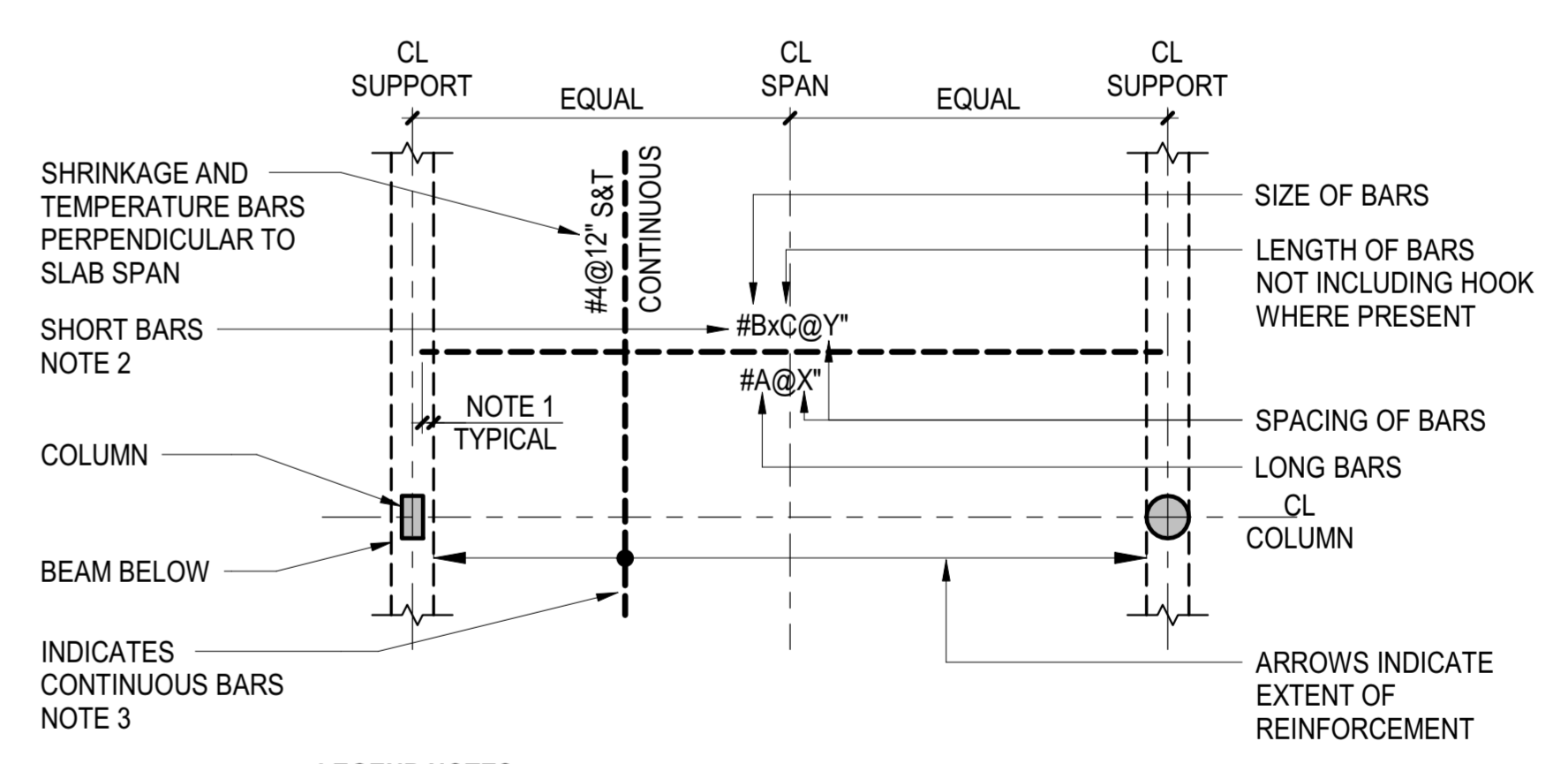
| NO. | DESCRIPTION | DATE |
|-----|-------------|------|
| | | |
| | | |
| | | |
| | | |
| | | |
| | | |
| | | |
| | | |
| | | |
| | | |

S1010
 Board of Zoning Adjustment
 CASE NO. S1010
 EXHIBIT NO. 42E

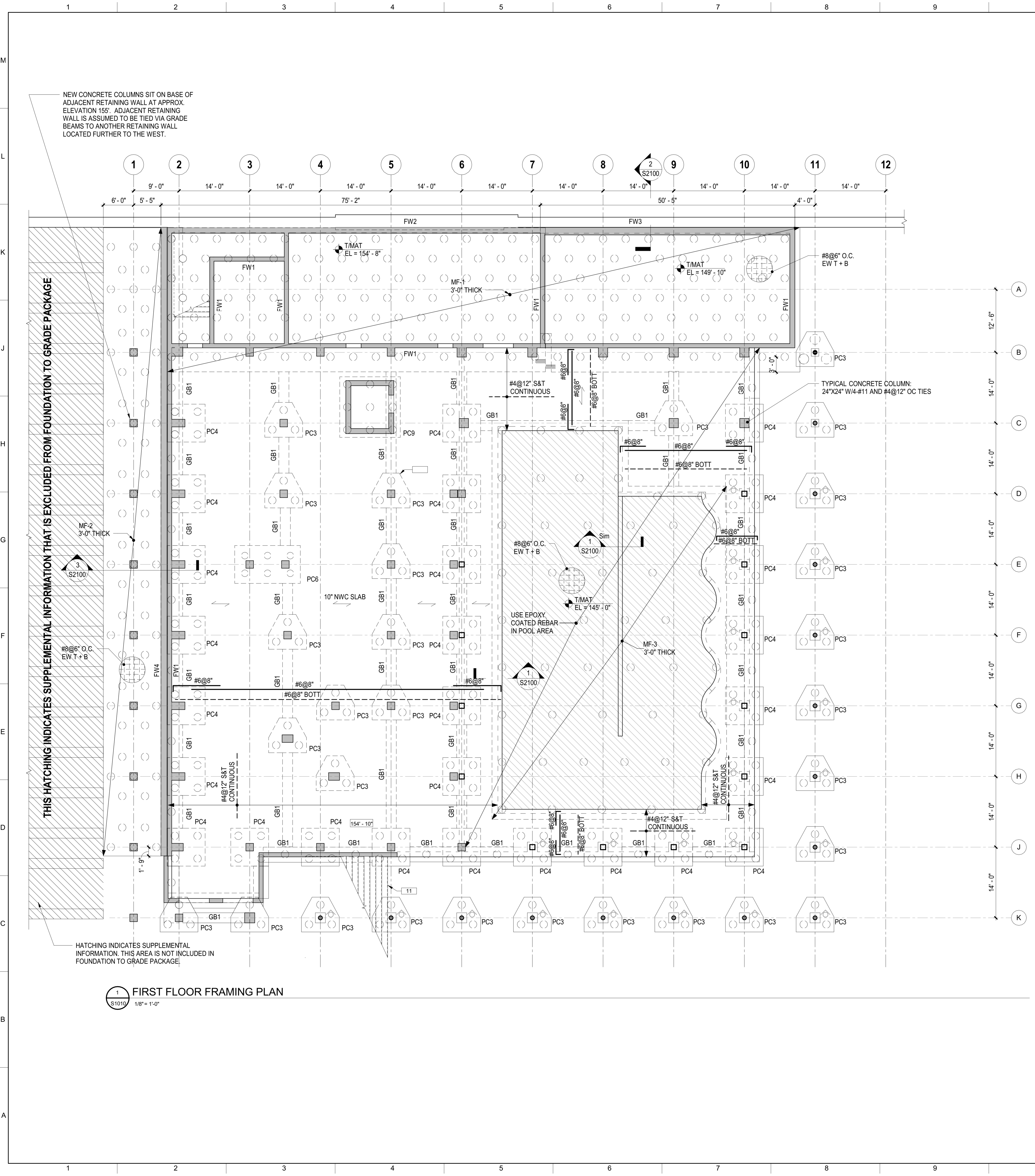
CAST-IN-PLACE PILE AND PILE CAP LEGEND



2 ONE-WAY SLAB TOP BAR REINFORCEMENT LEGEND
 NOT TO SCALE



3 ONE-WAY SLAB BOTTOM BAR REINFORCEMENT LEGEND
 NOT TO SCALE



NEW CONCRETE COLUMNS SIT ON BASE OF ADJACENT RETAINING WALL AT APPROX. ELEVATION 155'. ADJACENT RETAINING WALL IS ASSUMED TO BE TIED VIA GRADE BEAMS TO ANOTHER RETAINING WALL LOCATED FURTHER TO THE WEST.

THIS HATCHING INDICATES SUPPLEMENTAL INFORMATION THAT IS EXCLUDED FROM FOUNDATION TO GRADE PACKAGE

HATCHING INDICATES SUPPLEMENTAL INFORMATION. THIS AREA IS NOT INCLUDED IN FOUNDATION TO GRADE PACKAGE.

S1010 14:52 PM
 C:\Users\jgibson\OneDrive\Documents\Projects\1800049\1800049_030317\F1010.dwg
 P:\Projects\1800049\1800049_030317\F1010.dwg