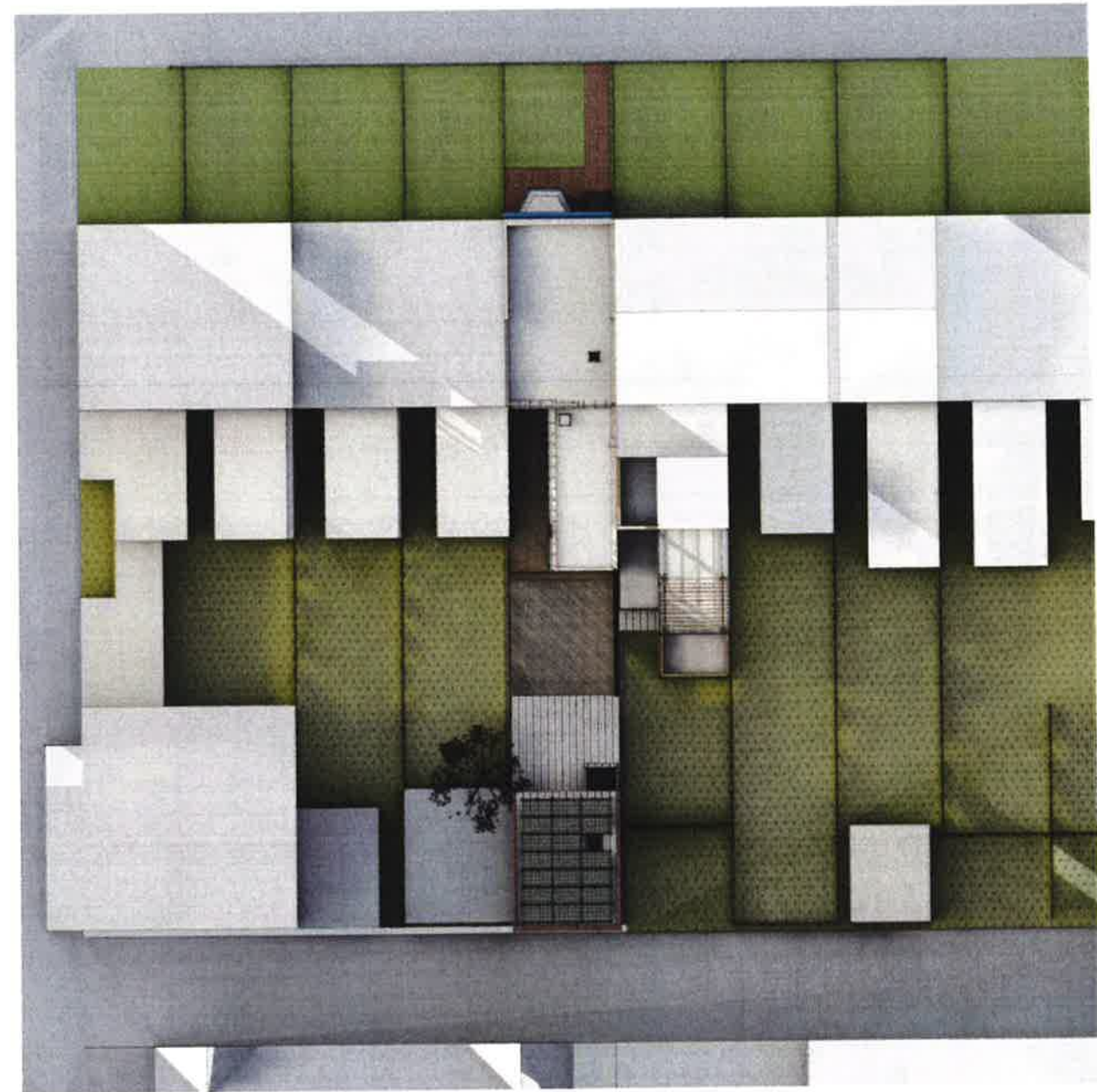
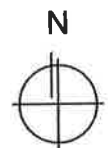


existing - winter - 9am



proposed - winter - 9am



AREA OF ADDITIONAL SHADOW CAST



1526 New Hampshire Ave NW
 Washington DC 20036
 (202) 659-0600
 www.troutdesign.com

GARAGE ADDITION AND ALTERATIONS

1436 S ST NW

SUN-1
 WINTER SUN STUDIES 9AM
 BZA Submission

27 September 2019
 Board of Zoning Adjustment

District of Columbia
 CASE NO.20138
 EXHIBIT NO.31B

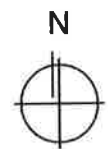
The drawings, plans, views, specifications, and/or details contained on this document (the drawings) are the creation and sole property of Trout, Inc. (the creator). Any reproduction, use of the drawings or their intellectual content is authorized without expressed written consent of the creator.



existing - winter - 12 noon



proposed - winter - 12noon



AREA OF ADDITIONAL SHADOW CAST

SUN-2
 WINTER SUN STUDIES 12 NOON
 BZA Submission
 27 September 2019

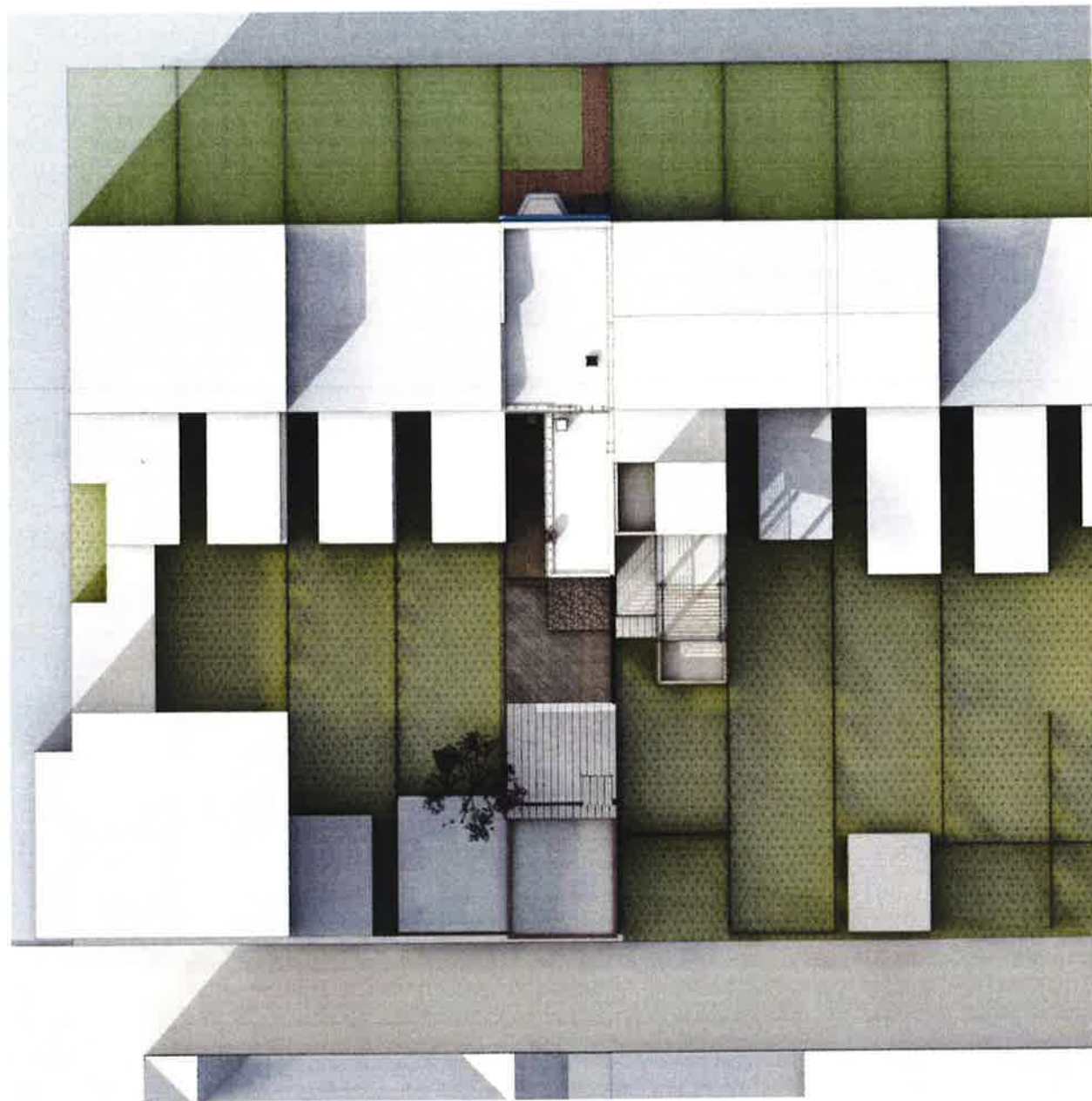


1526 New Hampshire Ave NW
 Washington DC 20036
 (202) 659-0600
 www.troutdesign.com

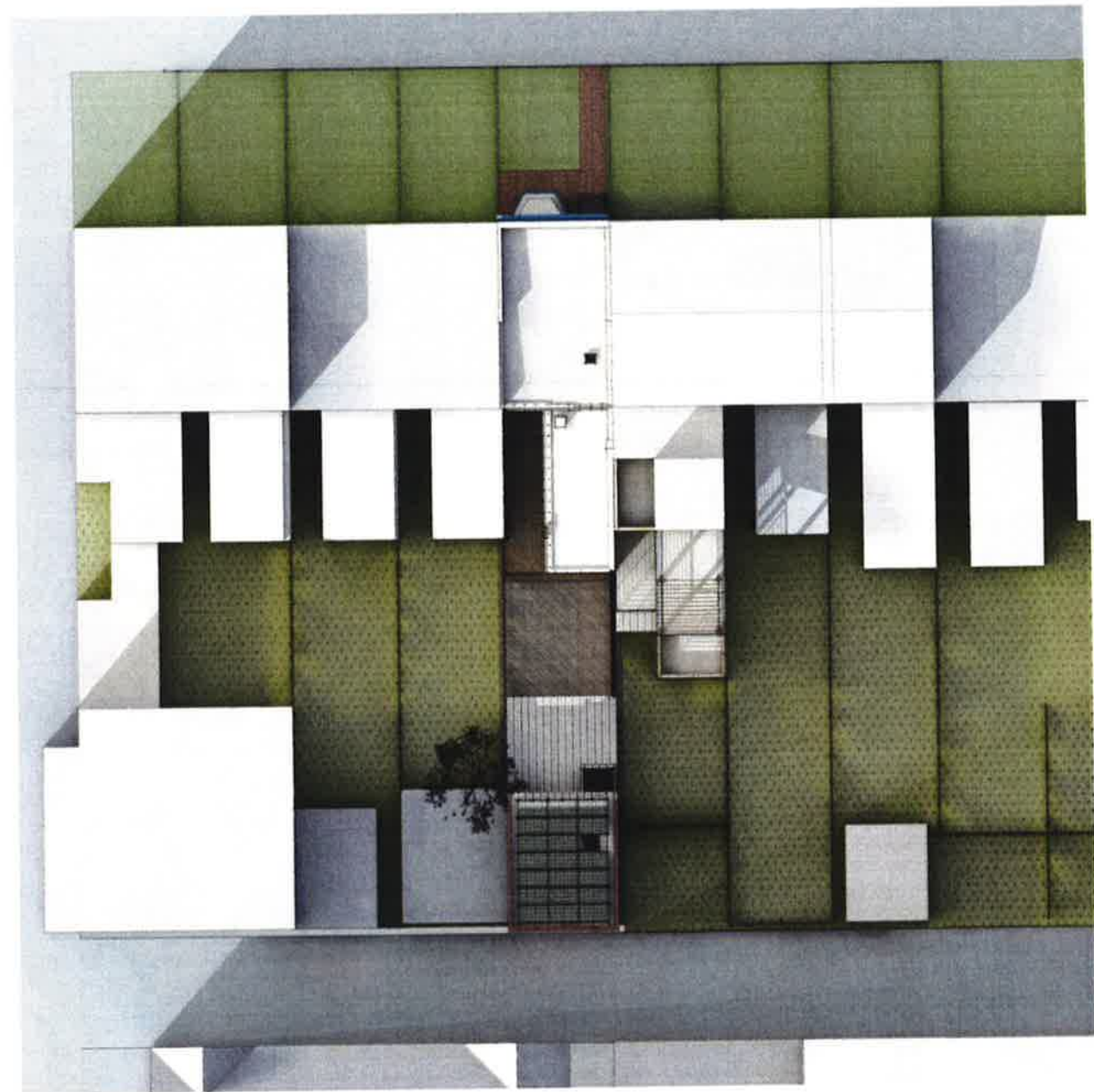
GARAGE ADDITION AND ALTERATIONS

1436 S ST NW

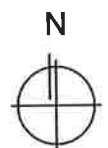
The drawings, plans, ideas, specifications and/or details contained in this document (the drawings) are the creation and sole property of Trout, Inc. (the creator). No reproduction, use of the drawings or their intellectual content is authorized without expressed written consent of the creator.



existing - winter - 4pm



proposed - winter - 4pm



AREA OF ADDITIONAL SHADOW CAST

SUN-3
 WINTER SUN STUDIES 4PM
 BZA Submission
 27 September 2019



1526 New Hampshire Ave NW
 Washington DC 20036
 (202) 659-0600
 www.troutdesign.com

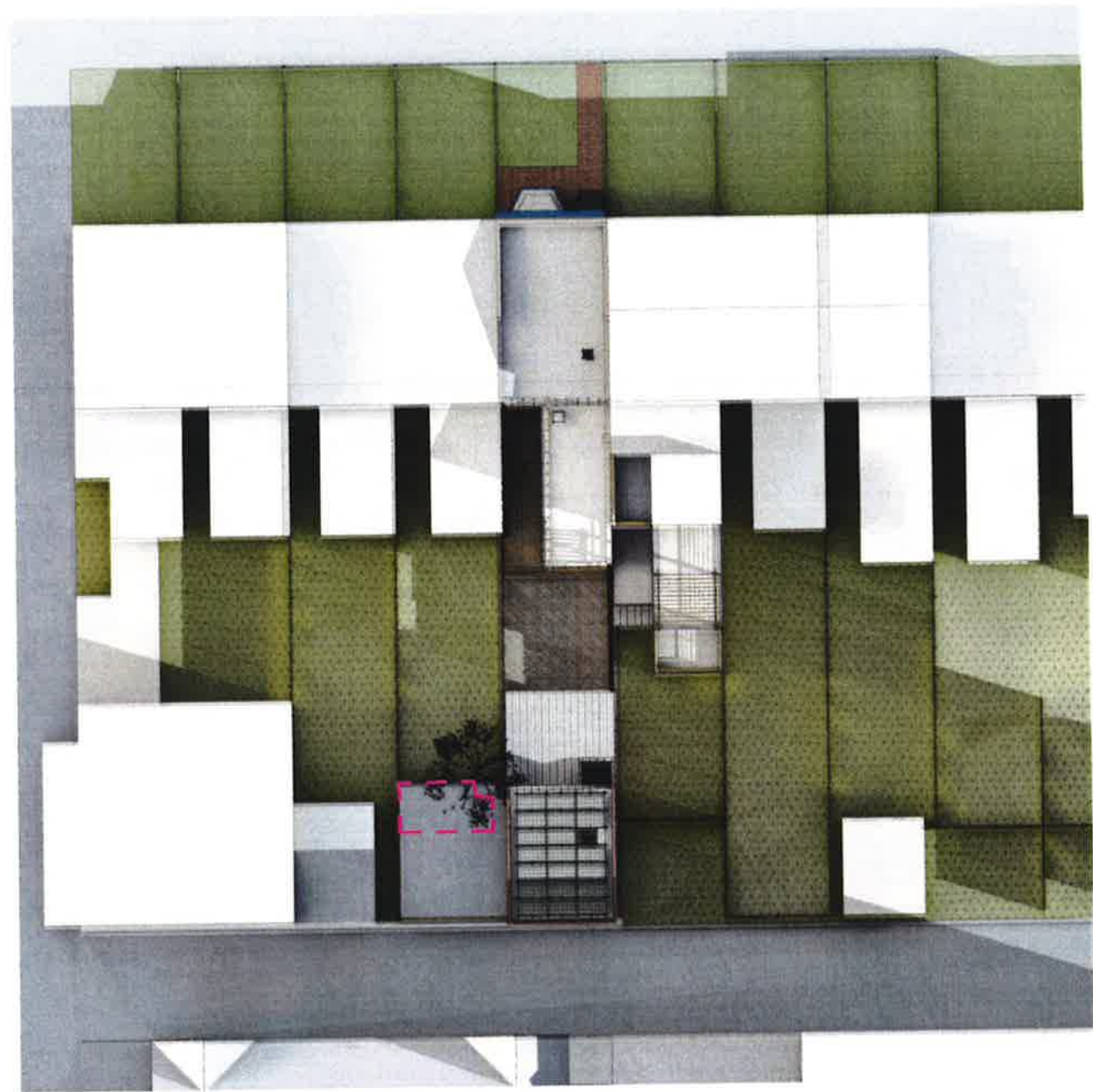
GARAGE ADDITION AND ALTERATIONS

1436 S ST NW

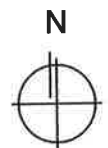
The drawings, plans, views, specifications and/or details contained on this document (the drawings) are the creation and sole property of Trout, Inc. (the creator). No reproduction, use of the drawings or their intellectual content is authorized without expressed written consent of the creator.



existing - spring - 9am



proposed - spring - 9am



AREA OF ADDITIONAL
SHADOW CAST



1526 New Hampshire Ave NW
Washington DC 20036
(202) 659-0600
www.troutdesign.com

GARAGE ADDITION AND ALTERATIONS

1436 S ST NW

SUN-4
SPRING / FALL EQUINOX SUN STUDIES 9AM
BZA Submission
27 September 2019

The drawings, plans, ideas specifications and/or details contained on this document (the drawings) are the creation and sole property of Trout, Inc. (the creator). No reproduction, use of the drawings or their intellectual content is authorized without expressed written consent of the creator.



existing - spring - 12 noon



proposed - spring - 12 noon



AREA OF ADDITIONAL SHADOW CAST



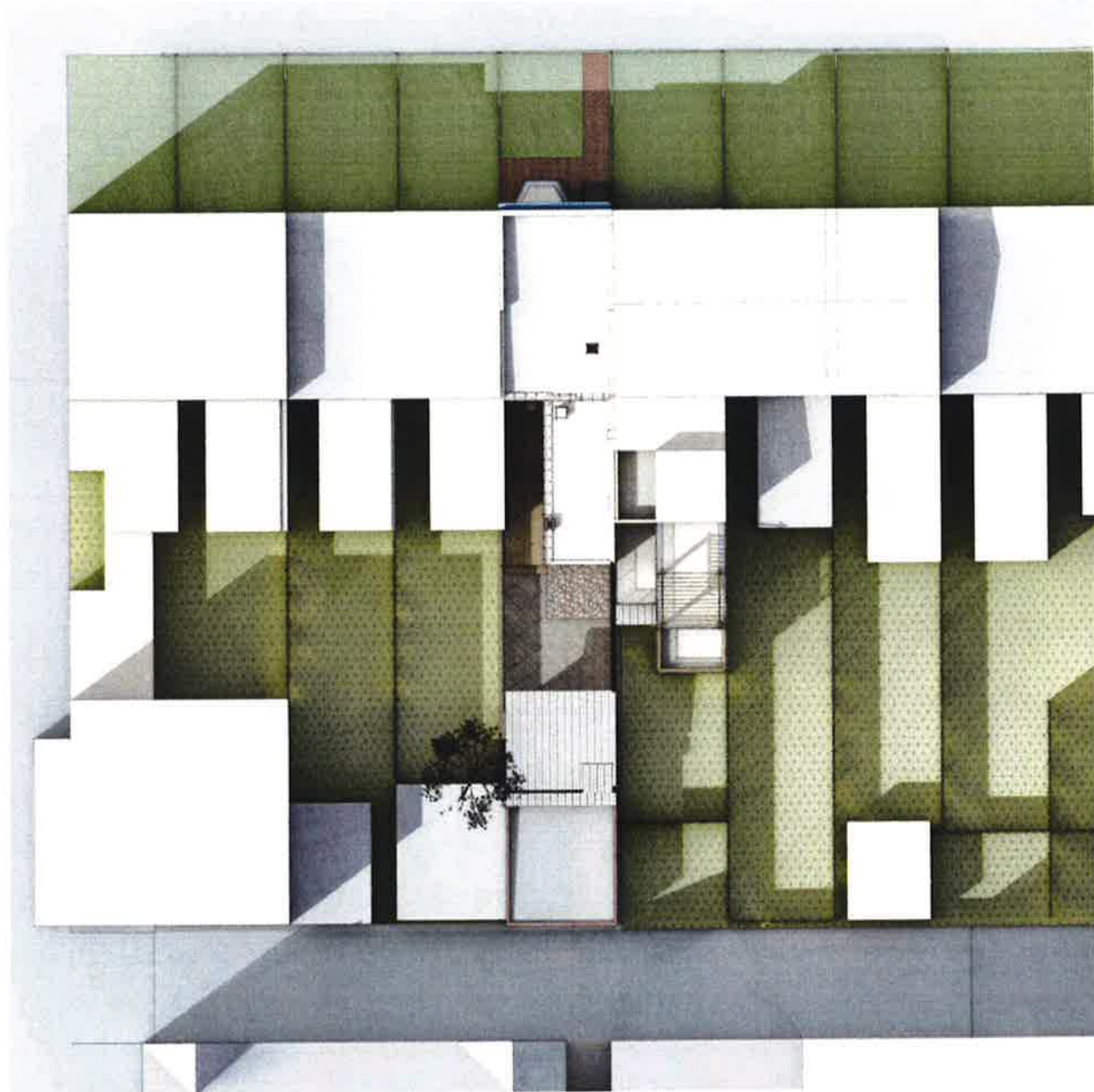
1526 New Hampshire Ave NW
 Washington DC 20036
 (202) 659-0600
 www.troutdesign.com

GARAGE ADDITION AND ALTERATIONS

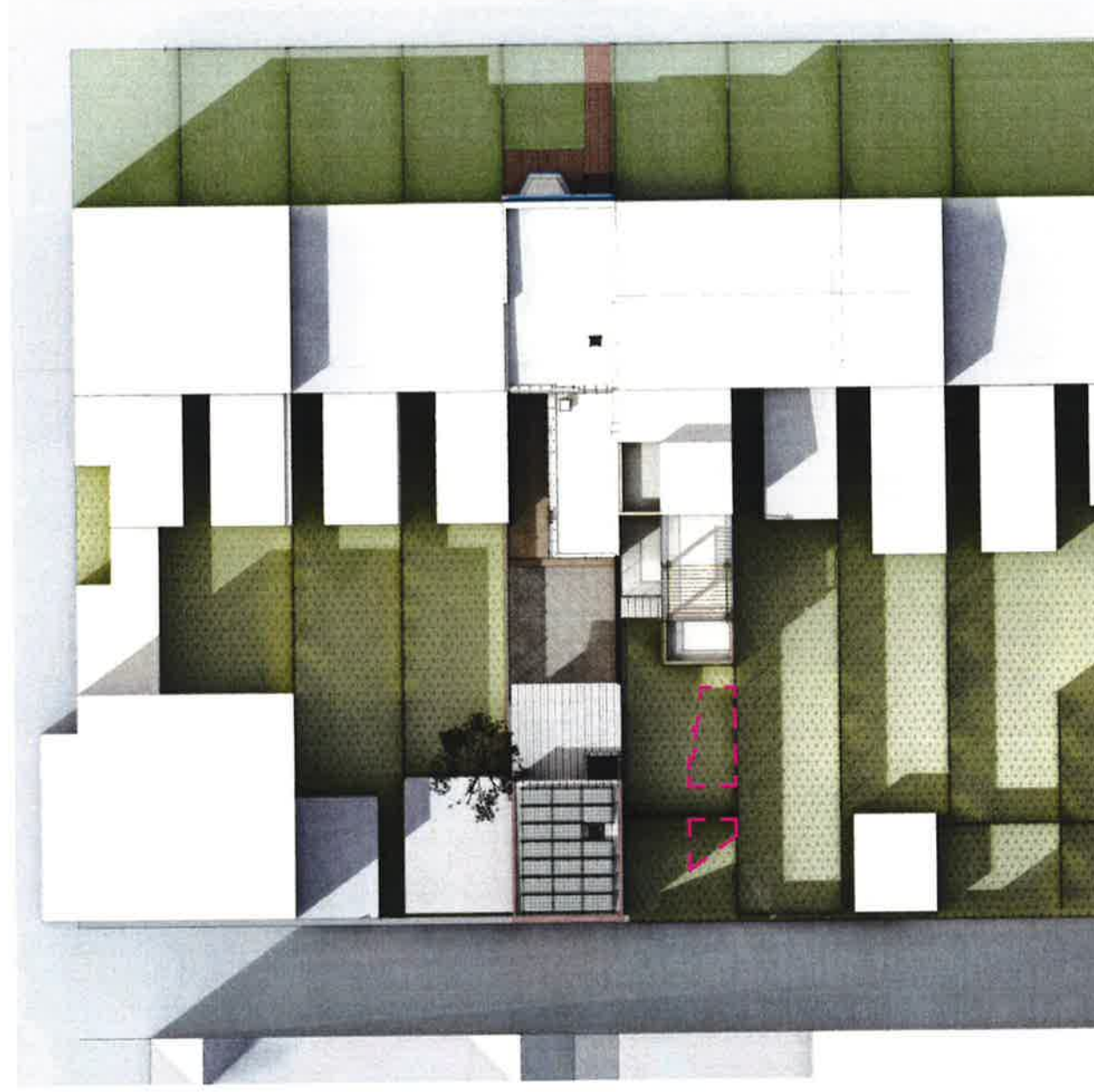
1436 S ST NW

SUN-5
 SPRING / FALL EQUINOX SUN STUDIES NOON
 BZA Submission
 27 September 2019

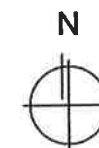
The drawings, plans, ideas, specifications and/or details contained on this document (the drawings) are the creation and sole property of Trout, Inc. (the creator). No reproduction, use of the drawings or their intellectual content is authorized without expressed written consent of the creator.



existing - spring - 4pm



proposed - spring - 4pm



AREA OF ADDITIONAL SHADOW CAST



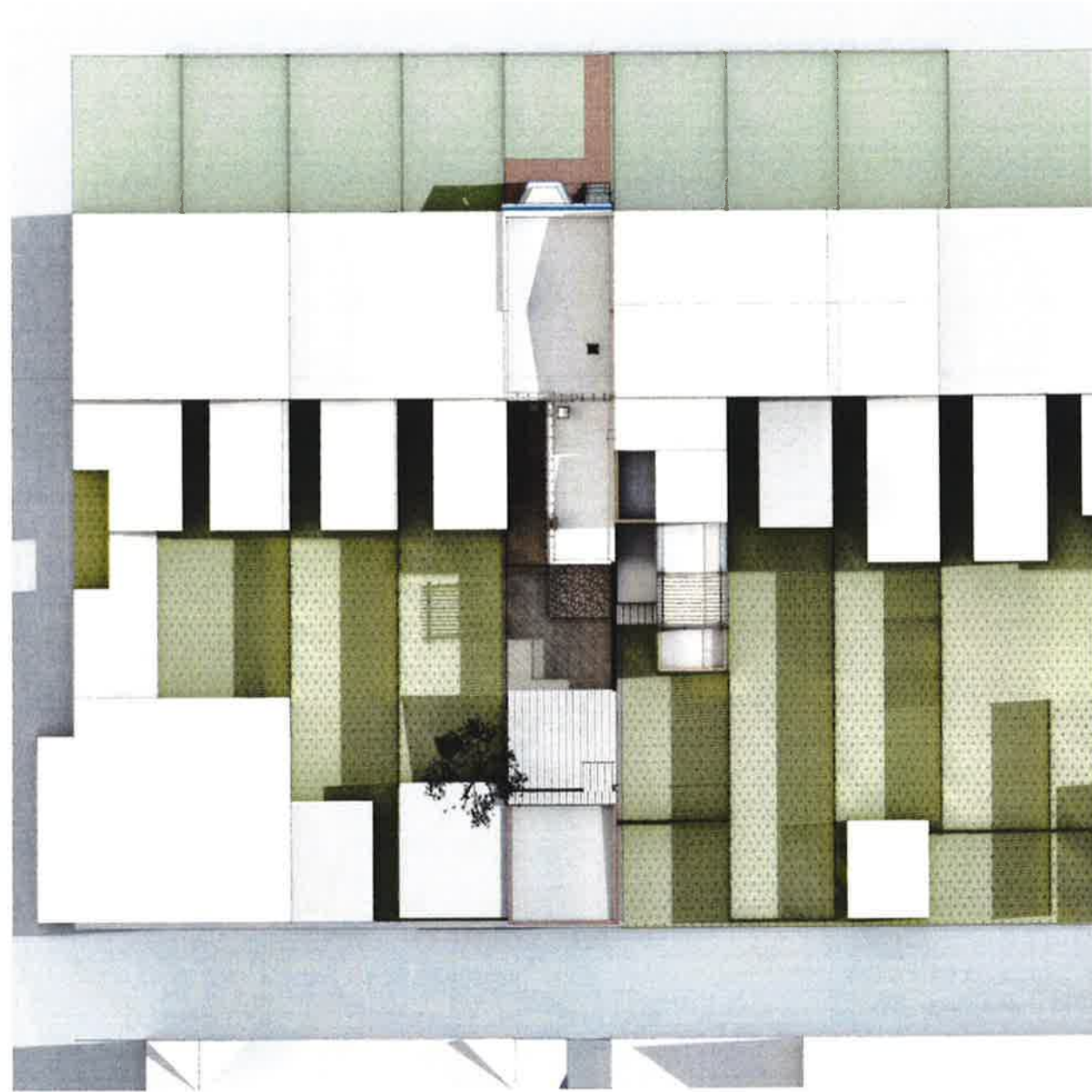
1526 New Hampshire Ave NW
 Washington DC 20036
 (202) 659-0600
 www.troutdesign.com

GARAGE ADDITION AND ALTERATIONS

1436 S ST NW

SUN-6
 SPRING / FALL EQUINOX SUN STUDIES 4PM
 BZA Submission
 27 September 2019

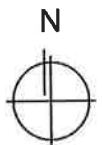
The drawings, plans, ideas, specifications and/or details contained on this document (the drawings) are the creation and sole property of Trout, Inc. (the creator). No reproduction, use of the drawings or their intellectual content is authorized without expressed written consent of the creator.



existing - summer - 9am



proposed - summer - 9am



AREA OF ADDITIONAL SHADOW CAST



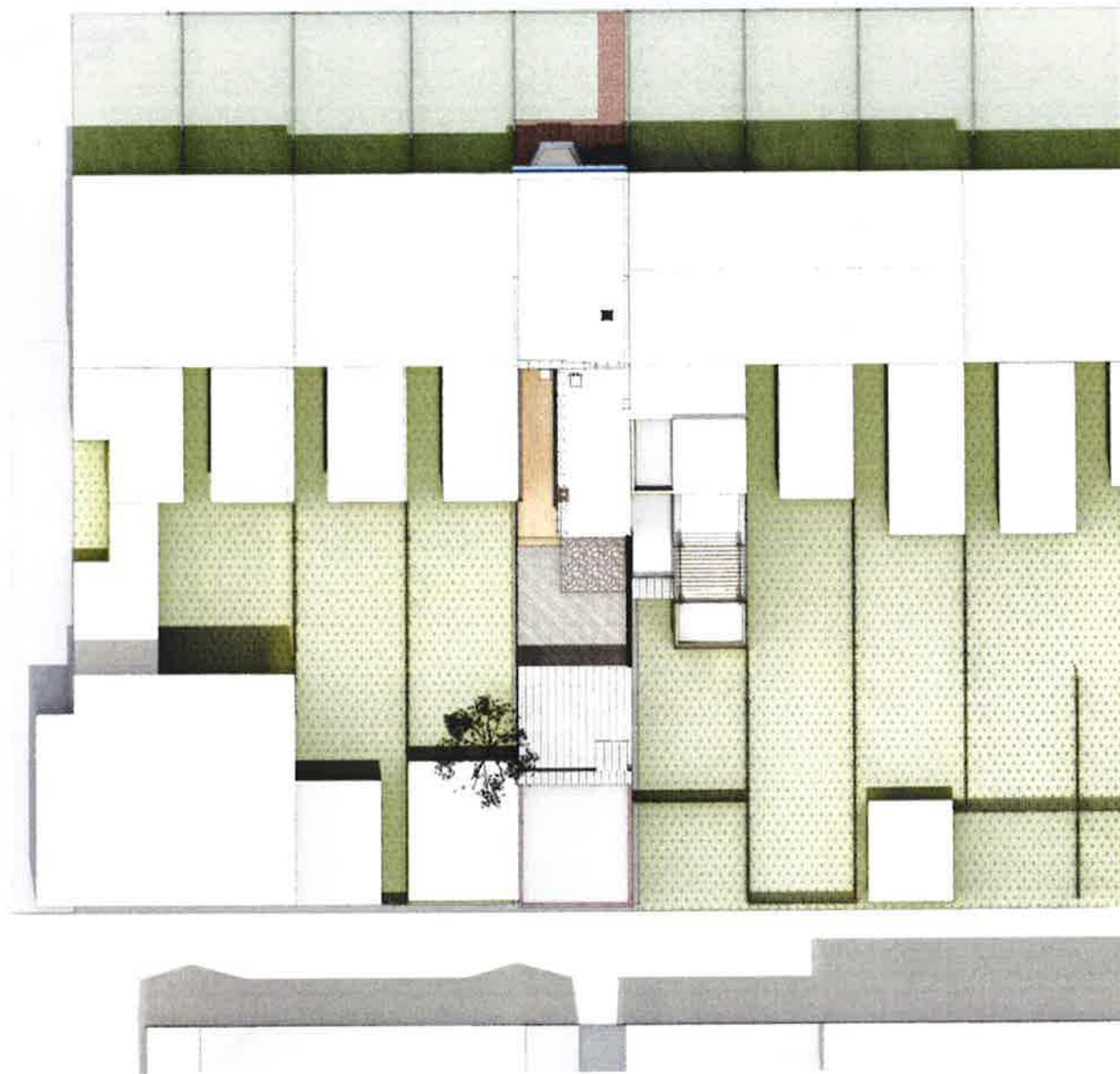
1526 New Hampshire Ave NW
 Washington DC 20036
 (202) 659-0600
 www.troutdesign.com

GARAGE ADDITION AND ALTERATIONS

1436 S ST NW

SUN-7
 SUMMER SUN STUDIES 9AM
 BZA Submission
 27 September 2019

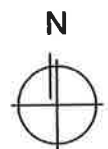
The drawings, plans, ideas, specifications and/or details contained on this document (the drawings) are the creation and sole property of Trout, Inc. (the creator). No reproduction, use of the drawings or their intellectual content is authorized without express and written consent of the creator.



existing - summer 12 noon



proposed - summer - 12noon



AREA OF ADDITIONAL SHADOW CAST



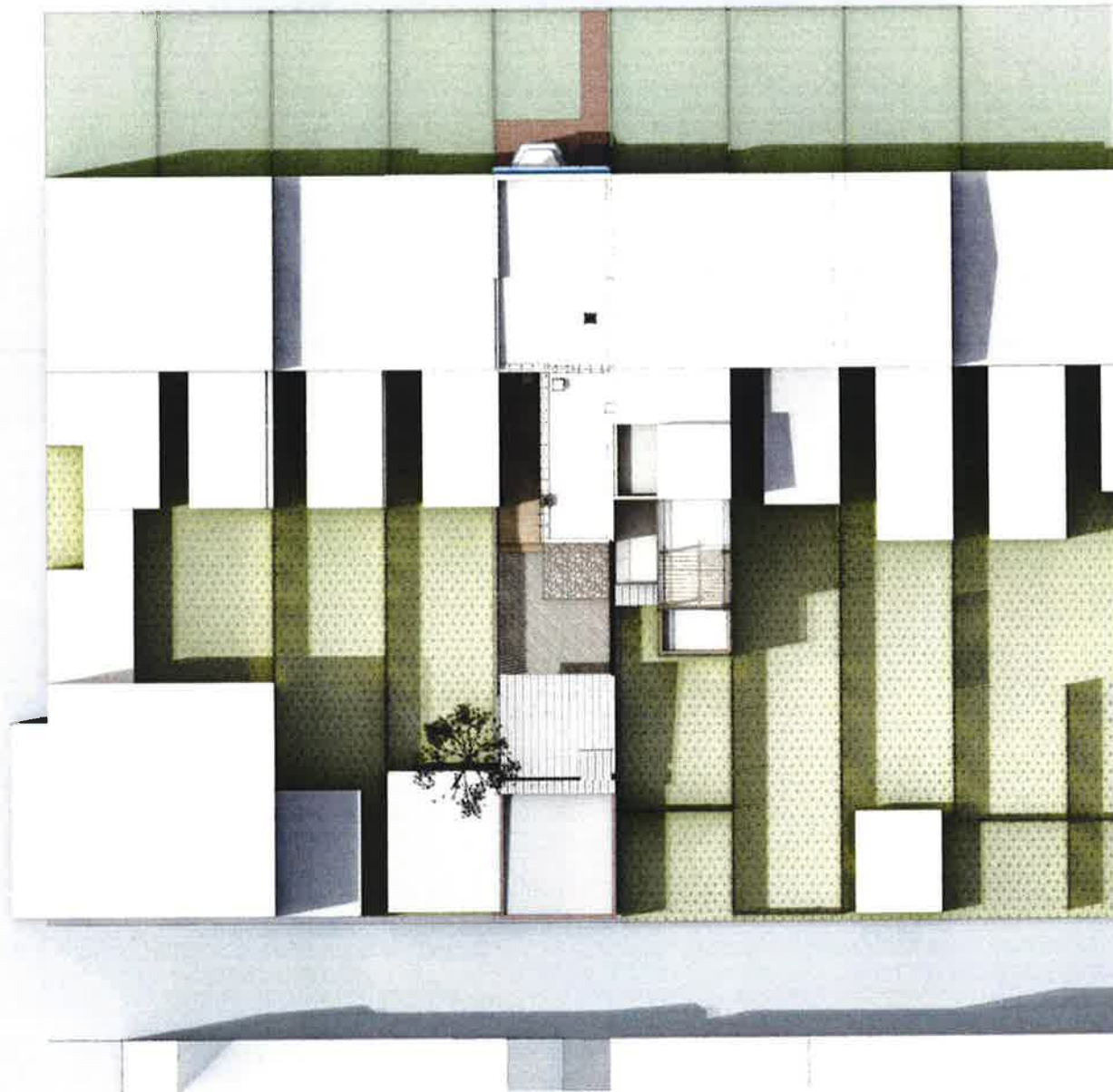
1526 New Hampshire Ave NW
 Washington DC 20036
 (202) 659-0600
 www.troutdesign.com

GARAGE ADDITION AND ALTERATIONS

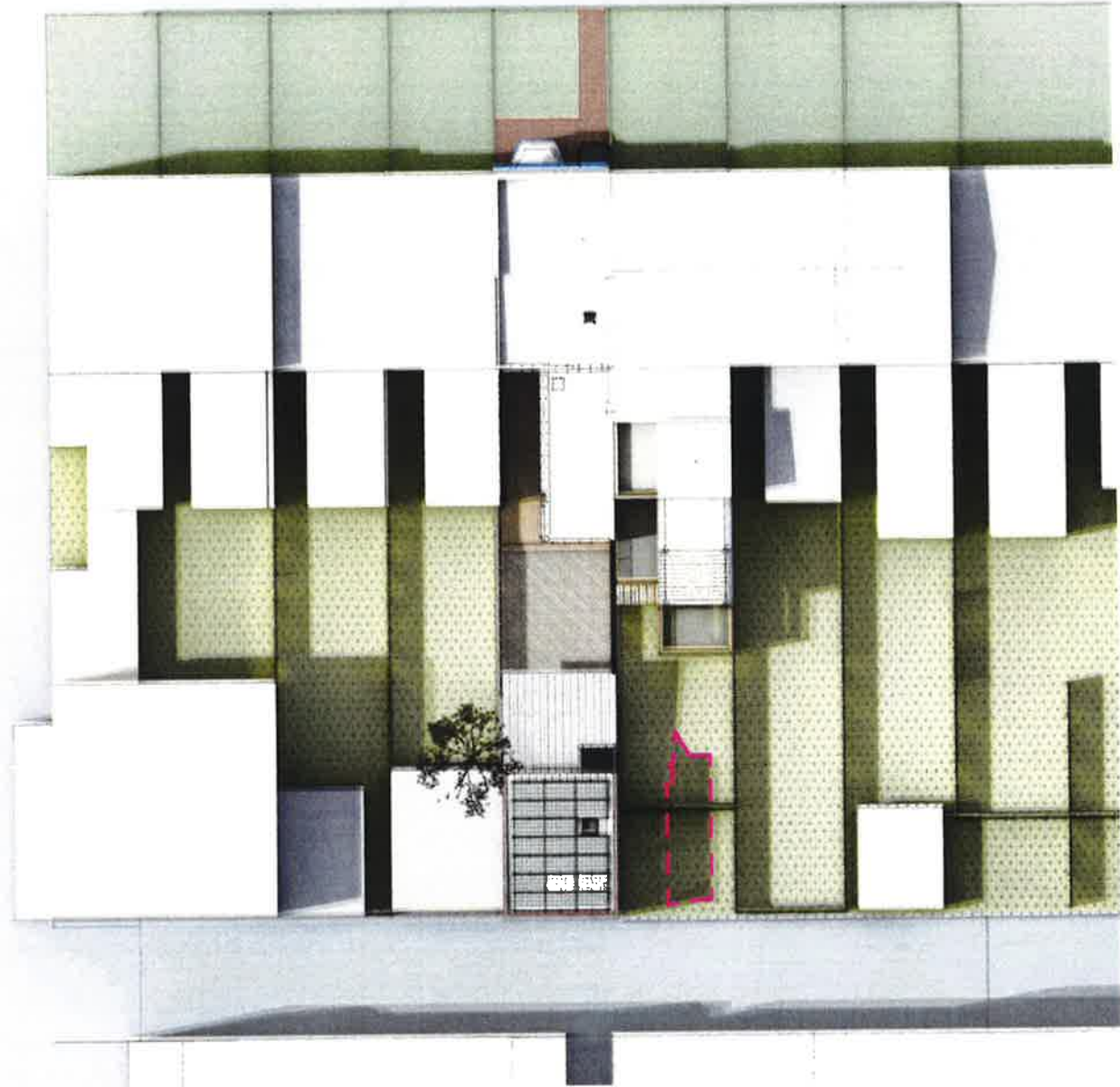
1436 S ST NW

SUN-8
 SUMMER SUN STUDIES 12 NOON
 BZA Submission
 27 September 2019

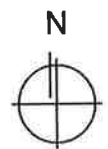
The drawings, plans, ideas, specifications and/or details contained on this document (the drawings) are the creation and sole property of Trout, Inc. (the creator). No reproduction, use of the drawings or their intellectual content is authorized without expressed written consent of the creator.



existing - summer - 4pm



proposed - summer - 4pm



— — — — — AREA OF ADDITIONAL SHADOW CAST



1526 New Hampshire Ave NW
 Washington DC 20036
 (202) 659-0600
 www.troutdesign.com

GARAGE ADDITION AND ALTERATIONS

1436 S ST NW

SUN-9
 SUMMER SUN STUDIES 4PM
 BZA Submission
 27 September 2019

The drawings, plans, ideas, specifications and/or details contained on this document (the drawings) are the creation and sole property of Trout, Inc. (the creator). No reproduction, use of the drawings or their intellectual content is authorized without express written consent of the creator.