

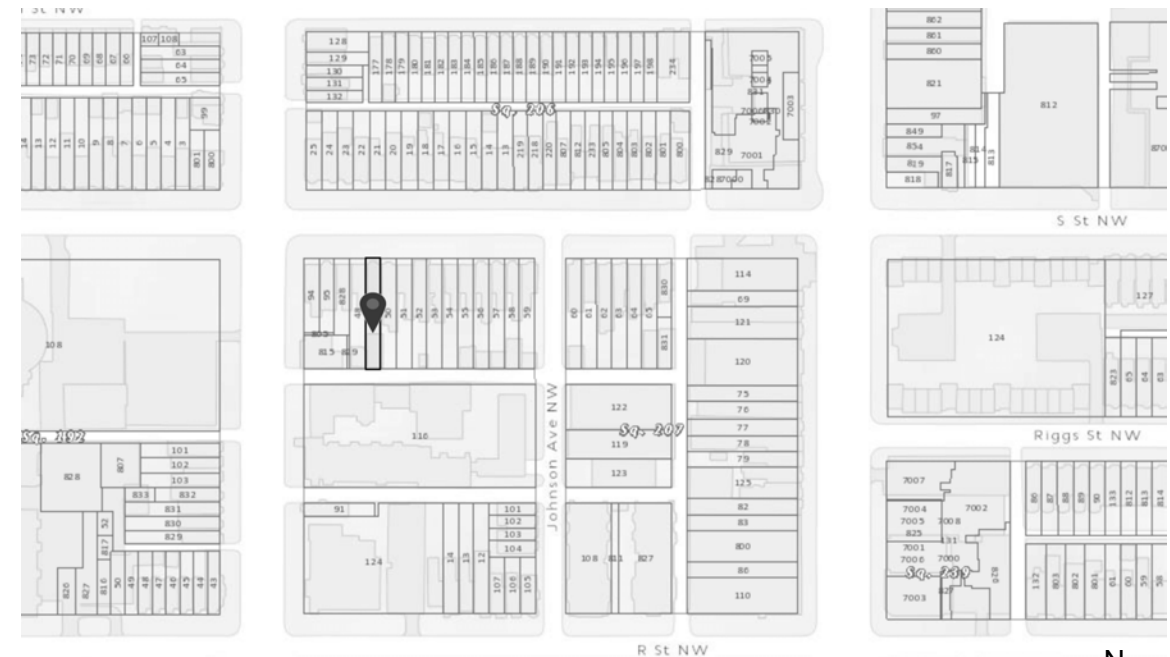
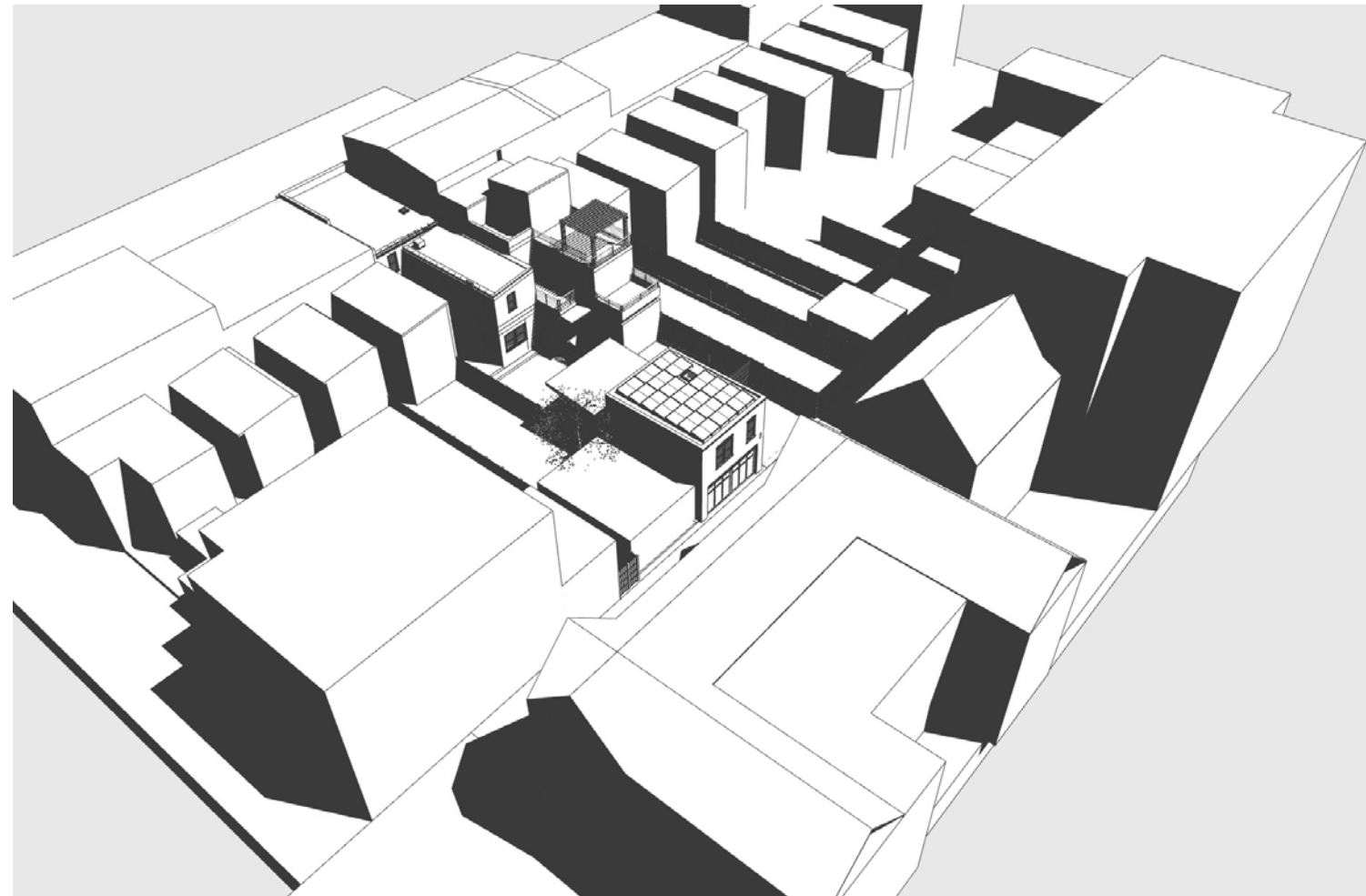
DRAWING INDEX

SD-1	Cover Sheet
SD-2	Block Plan and Aerial View
SD-3	Site Plan and Section
SD-4	First Floor Plan
SD-5	Second Floor Plan
SD-6	Roof Plan
SD-7	Alley (South) Elevation
SD-8	North Elevation and Perspective
SD-9	East Elevation
SD-10	West Elevation
SD-11	Building Section
SD-12	Alley Perspective from SE
SD-13	Alley Perspective from SW
SD-14	Adjacent Property Perspectives
SD-15	Site Survey
SD-16	Existing Photos

SCOPE OF WORK: Construct second-story addition at accessory building to accommodate second dwelling unit.

ZONING INFORMATION:

Zone :	RF-2
Historic District:	Greater 14th St Historic District
Lot:	49
Square:	207
Lot Size:	2,742 sf
Existing Use:	Single-family dwelling
Proposed Use:	Two-family dwelling (second unit in accessory building)
Lot Occupancy:	Principal structure 1065 sf
	Accessory structure 843 sf
	Total 1,908 sf
	60% allowable 1,645 sf
	70% existing and proposed (non-conforming, unchanged from existing)
Off-street Parking	1 space provided 1 space required



1

AERIAL VIEW

2

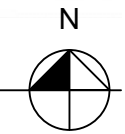
VICINITY PLAN



1526 New Hampshire Ave NW
Washington DC 20036
(202) 659-0600
www.troutdesign.com

GARAGE ADDITION AND ALTERATIONS

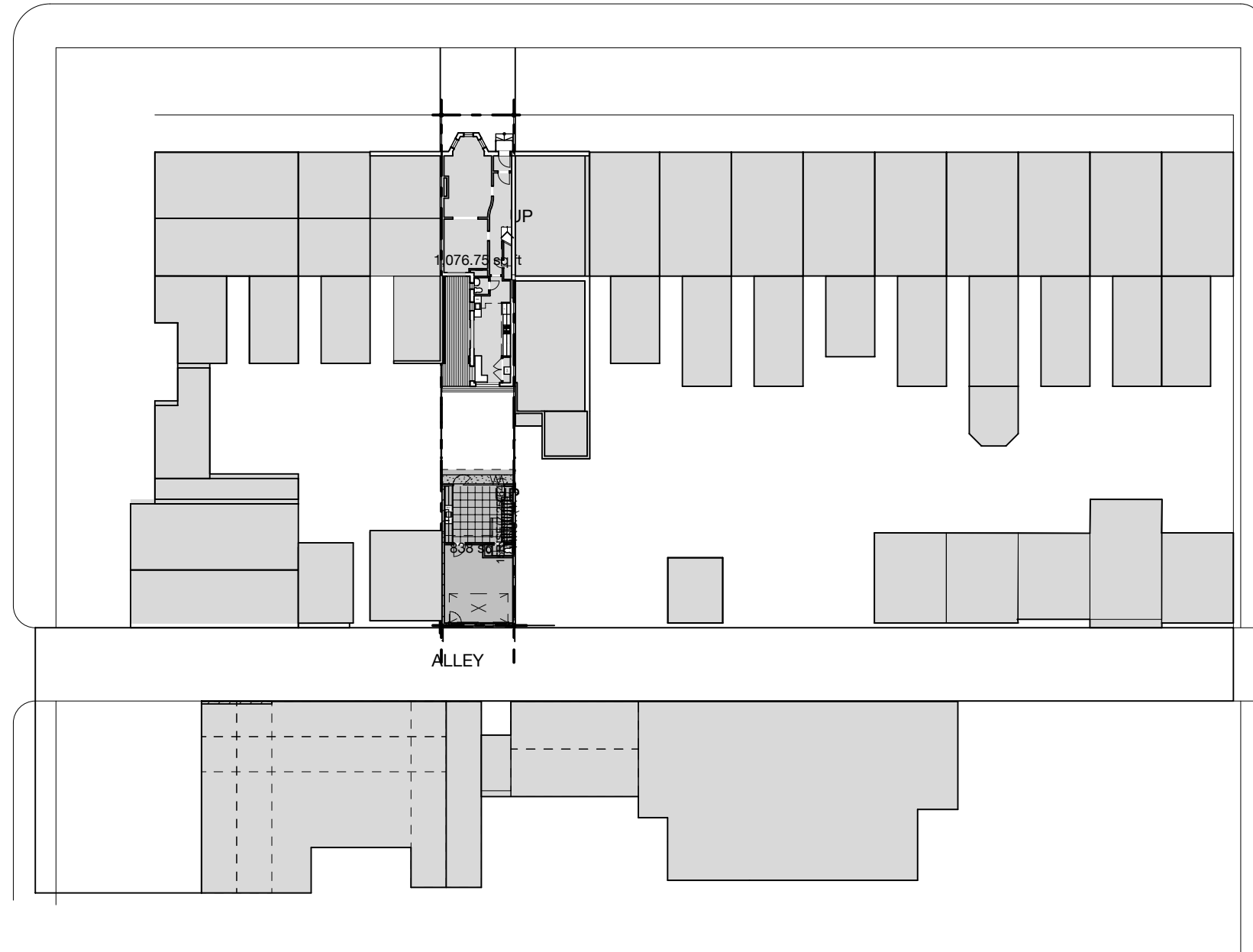
1436 S ST NW



SD-1
Cover Sheet
Board of Zoning Adjustment
BZA Submission
9 Oct 2013
EXHIBIT NO.31A

S STREET NW

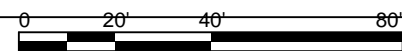
15TH STREET NW



JOHNSON AVE NW



1 **BLOCK PLAN**
SCALE: 1" = 40'



2 **AERIAL VIEW**



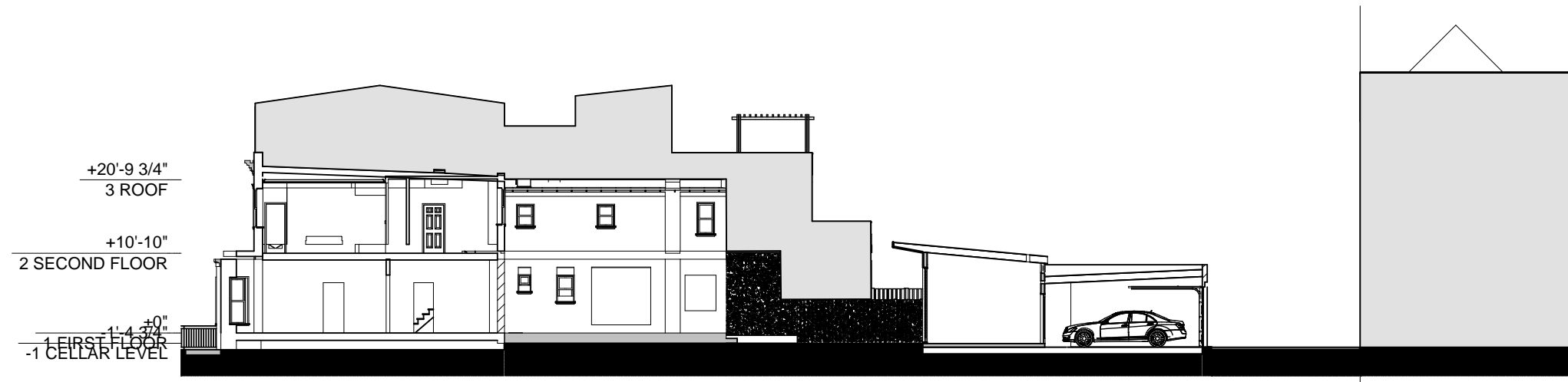
1526 New Hampshire Ave NW
Washington DC 20036
(202) 659-0600
www.troutdesign.com

GARAGE ADDITION AND ALTERATIONS

1436 S ST NW

SD-2
Block Plan and Aerial View
BZA Submission
9 October 2019

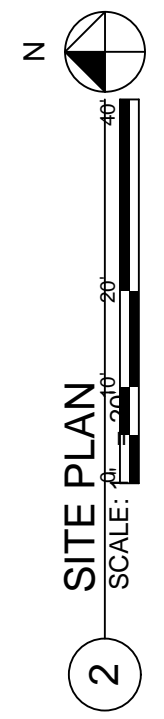
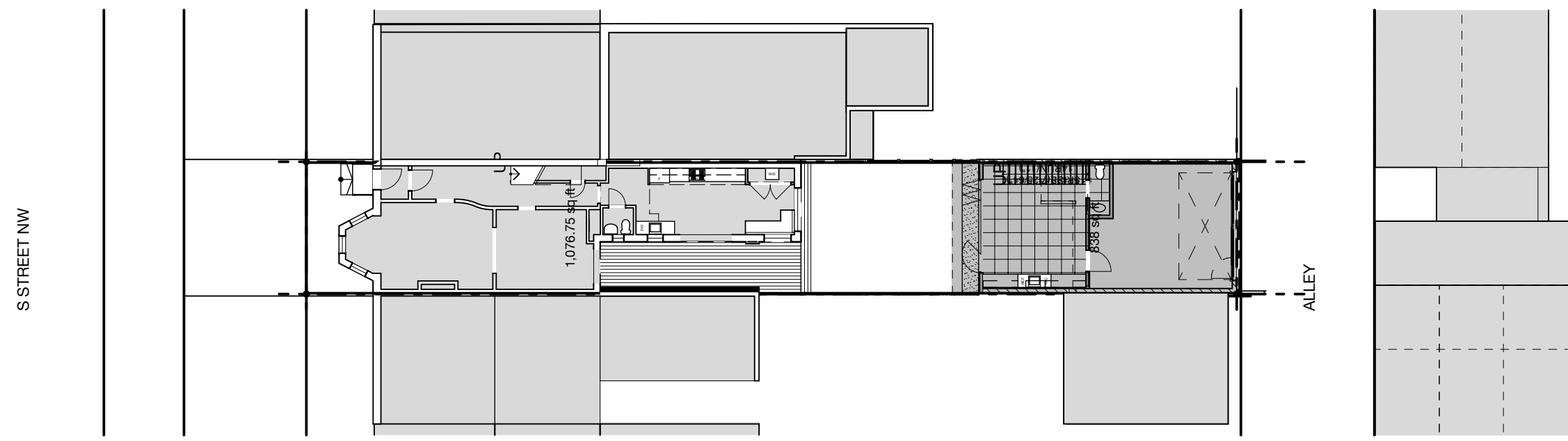
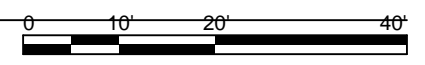
The drawings, plans, ideas specifications and/or details contained on this document [the drawings] are the creation and sole property of Trout, inc. [the creator]. No reproduction, use of the drawings or their intellectual content is authorized without expressed written consent of the creator.



3 EXISTING SITE SECTION



1 PROPOSED SITE SECTION
SCALE: 1" = 20'



2

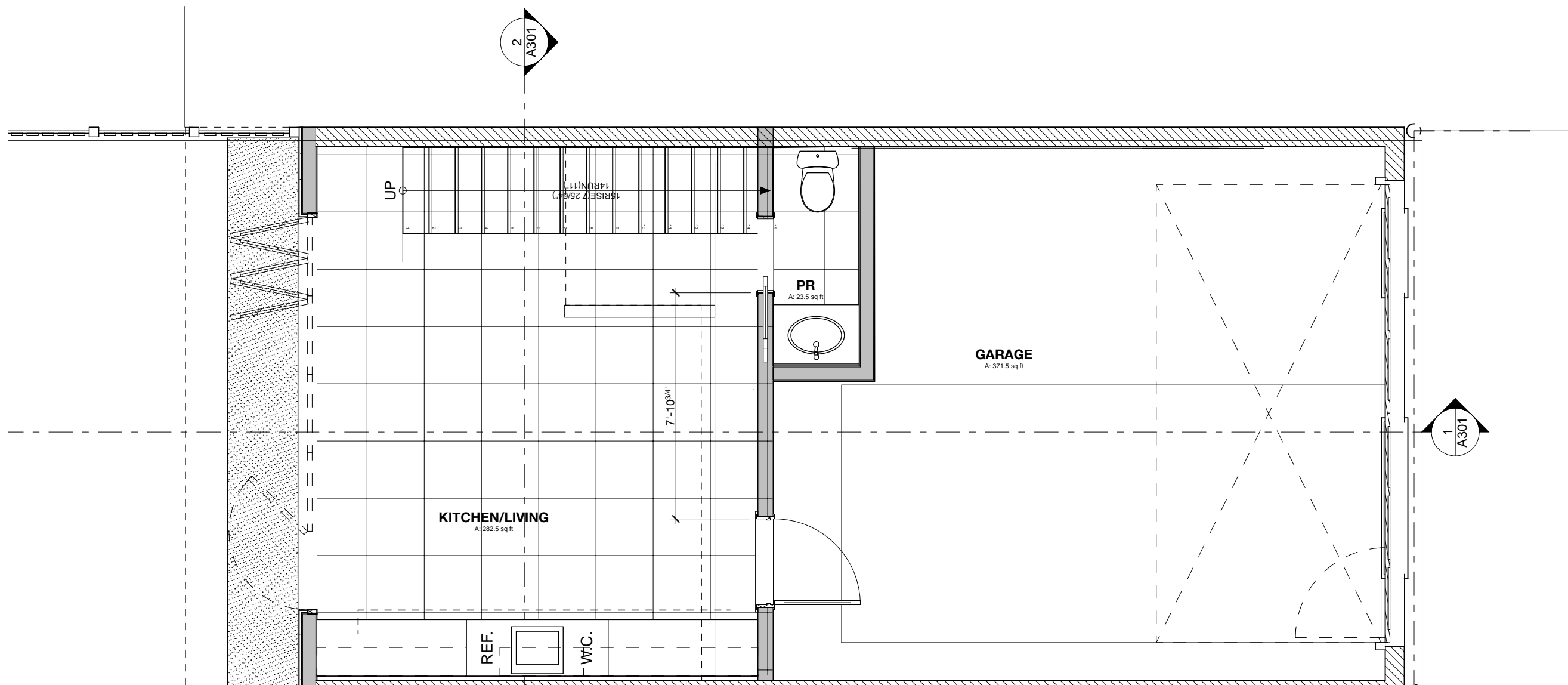


1526 New Hampshire Ave NW
Washington DC 20036
(202) 659-0600
www.troutdesign.com

GARAGE ADDITION AND ALTERATIONS

1436 S ST NW

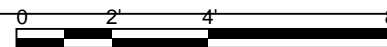
The drawings, plans, ideas specifications and/or details contained on this document [the drawings] are the creation and sole property of Trout, inc. [the creator]. No reproduction, use of the drawings or their intellectual content is authorized without expressed written consent of the creator.



1

FIRST FLOOR

SCALE: 1/4" = 1'-0"



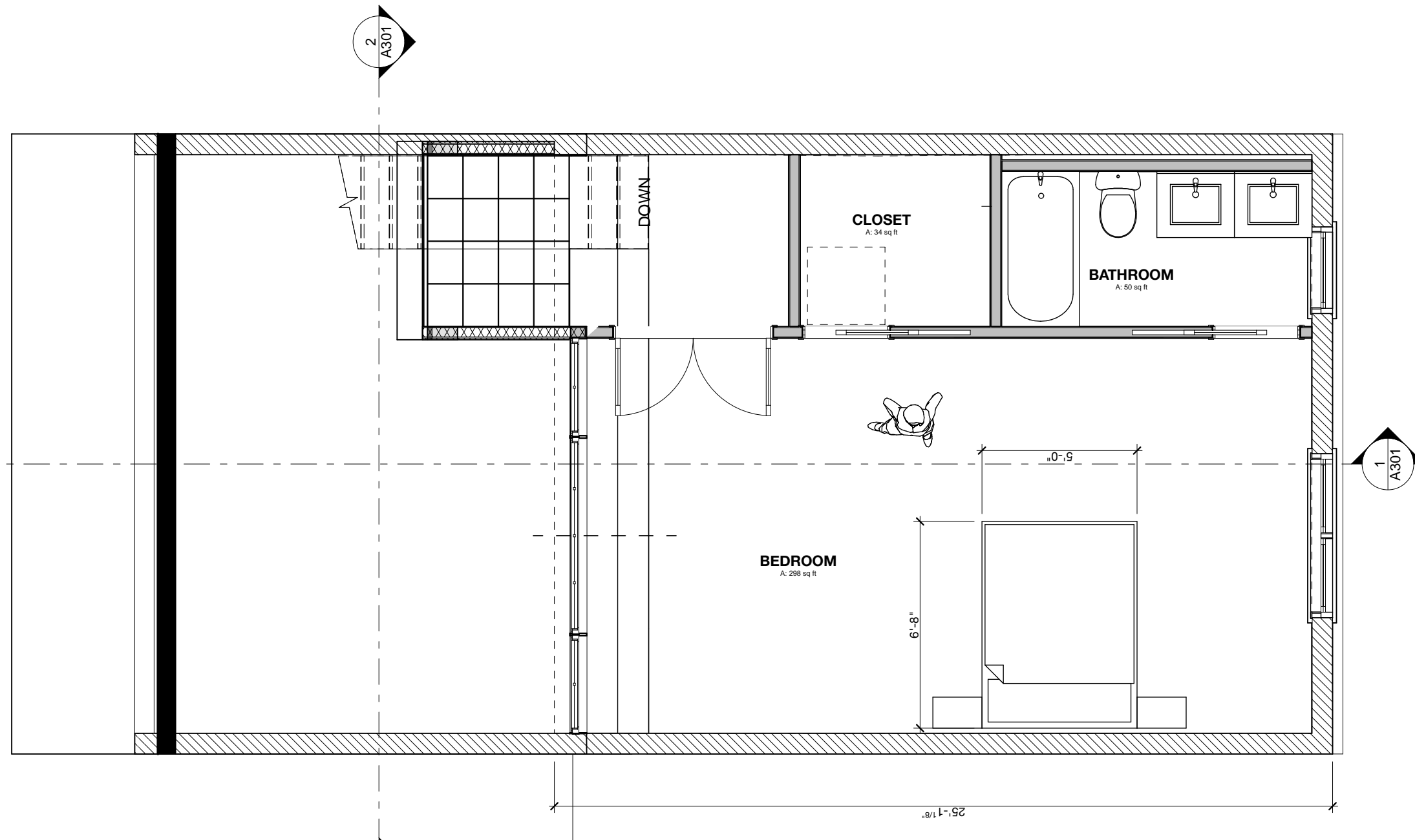
1526 New Hampshire Ave NW
 Washington DC 20036
 (202) 659-0600
 www.troutdesign.com

GARAGE ADDITION AND ALTERATIONS

1436 S ST NW

SD-4
 First Floor Plan
 BZA Submission
 9 October 2019

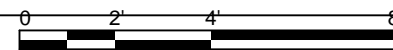
The drawings, plans, ideas specifications and/or details contained on this document [the drawings] are the creation and sole property of Trout, inc. [the creator]. No reproduction, use of the drawings or their intellectual content is authorized without expressed written consent of the creator.



1

SECOND FLOOR PLAN

SCALE: 1/4" = 1'-0"



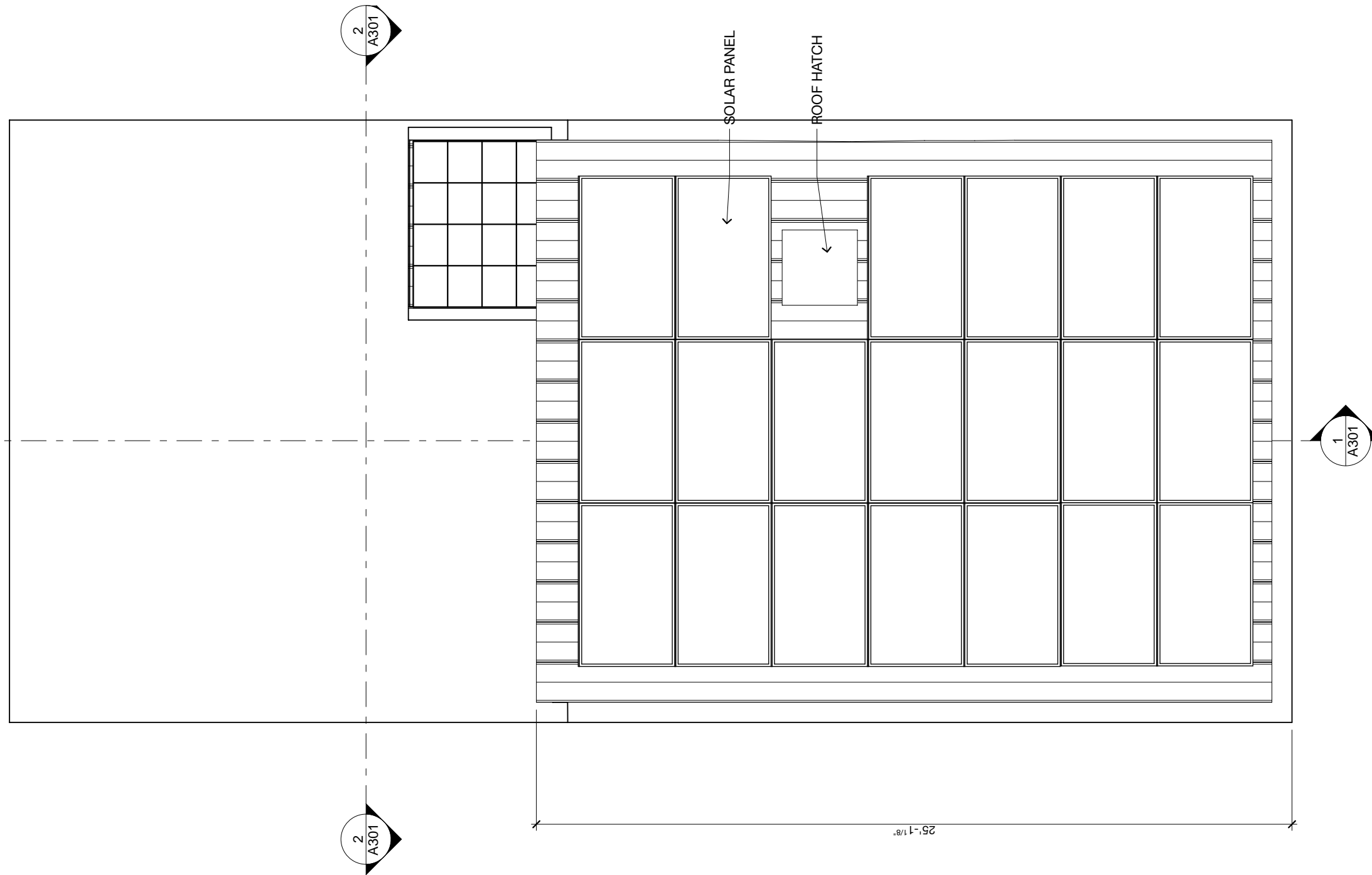
1526 New Hampshire Ave NW
 Washington DC 20036
 (202) 659-0600
 www.troutdesign.com

GARAGE ADDITION AND ALTERATIONS

1436 S ST NW

SD-5
 Second Floor Plan
 BZA Submission
 9 October 2019

The drawings, plans, ideas specifications and/or details contained on this document [the drawings] are the creation and sole property of Trout, inc. [the creator]. No reproduction, use of the drawings or their intellectual content is authorized without expressed written consent of the creator.



1 ROOF



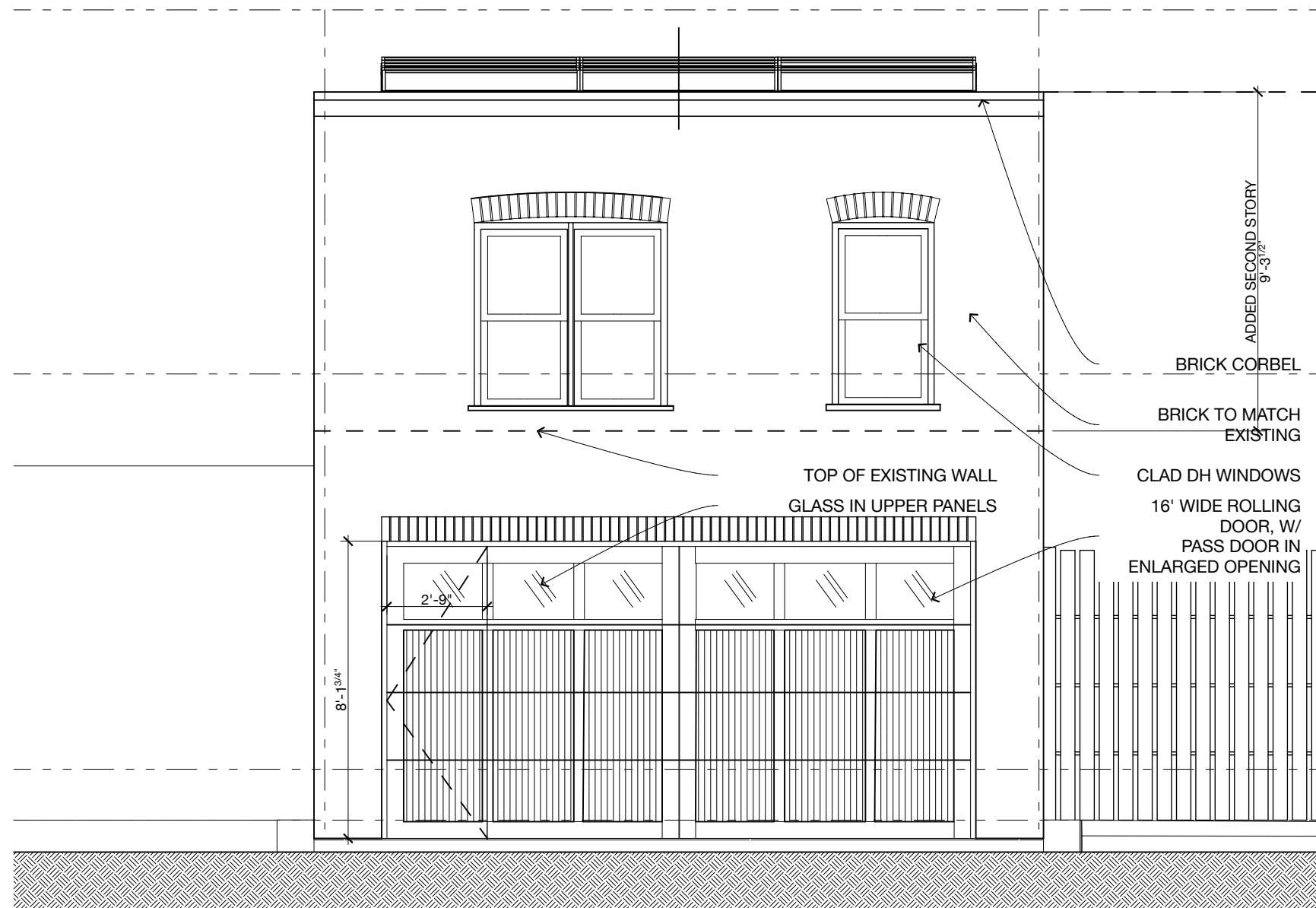
1526 New Hampshire Ave NW
 Washington DC 20036
 (202) 659-0600
 www.troutdesign.com

GARAGE ADDITION AND ALTERATIONS

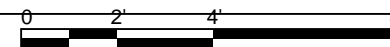
1436 S ST NW

SD-6
 Roof Plan
 BZA Submission
 9 October 2019

The drawings, plans, ideas specifications and/or details contained on this document [the drawings] are the creation and sole property of Trout, inc. [the creator]. No reproduction, use of the drawings or their intellectual content is authorized without expressed written consent of the creator.



1 South Elevation
 SCALE: 1/4" = 1'-0"



1526 New Hampshire Ave NW
 Washington DC 20036
 (202) 659-0600
 www.troutdesign.com

GARAGE ADDITION AND ALTERATIONS

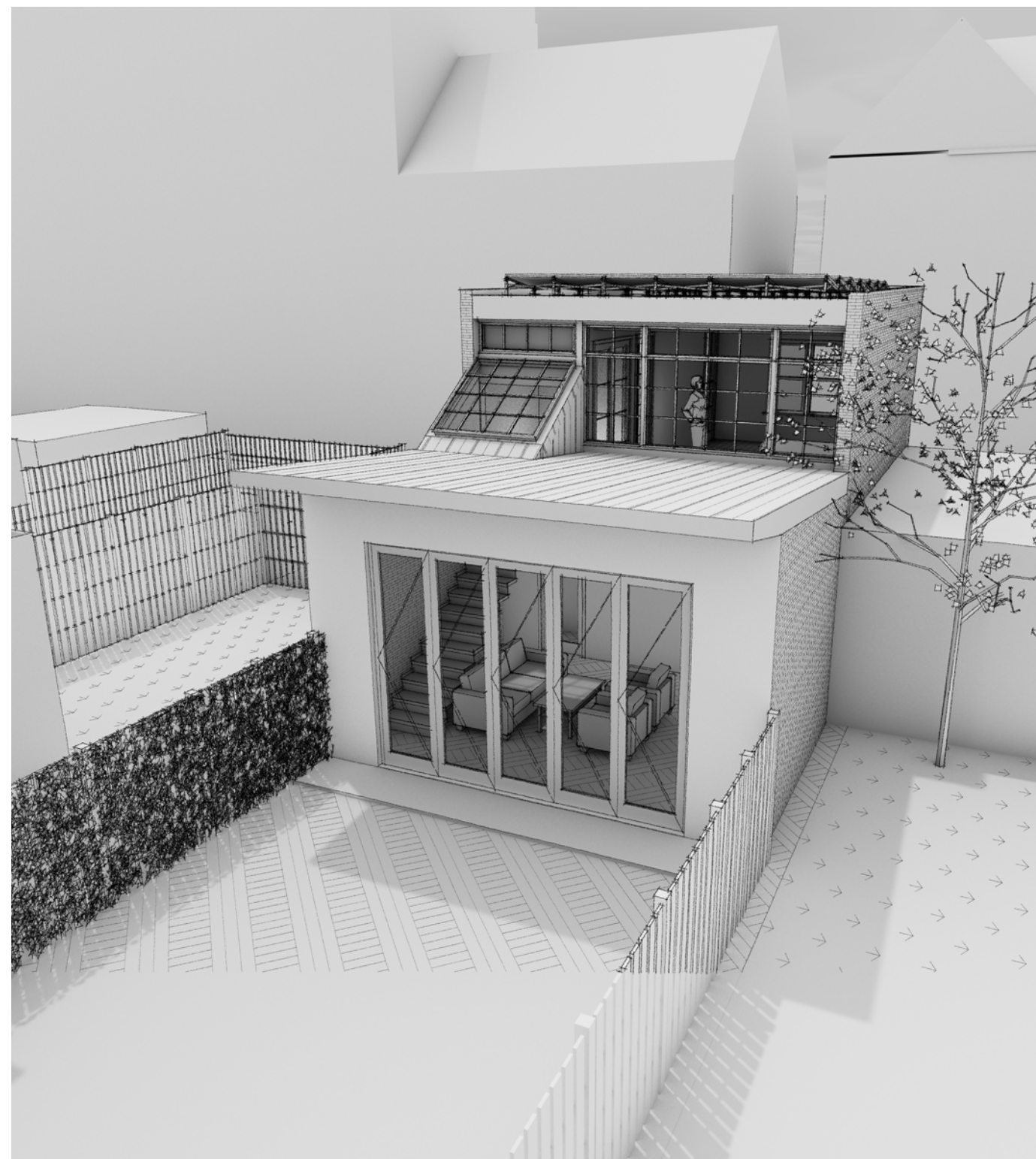
1436 S ST NW

SD-7
 Alley (South) Elevation
 BZA Submission
 9 October 2019

The drawings, plans, ideas specifications and/or details contained on this document [the drawings] are the creation and sole property of Trout, inc. [the creator]. No reproduction, use of the drawings or their intellectual content is authorized without expressed written consent of the creator.



1 GARAGE ELEVATION- PROPOSED
SCALE: 1/4" = 1'-0"



PERSPECTIVE FROM NW



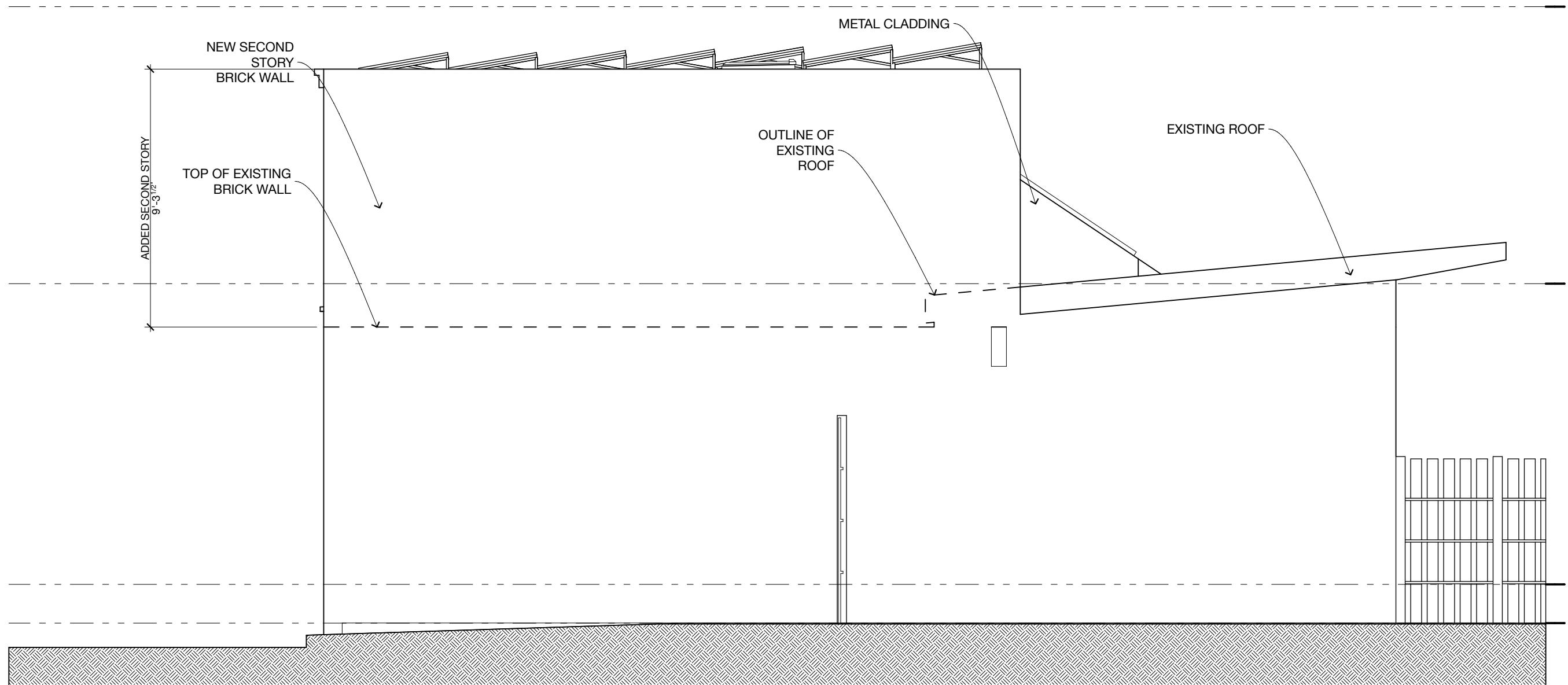
1526 New Hampshire Ave NW
Washington DC 20036
(202) 659-0600
www.troutdesign.com

GARAGE ADDITION AND ALTERATIONS

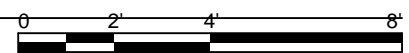
1436 S ST NW

SD-8
North Elevation and Perspective
BZA Submission
9 October 2019

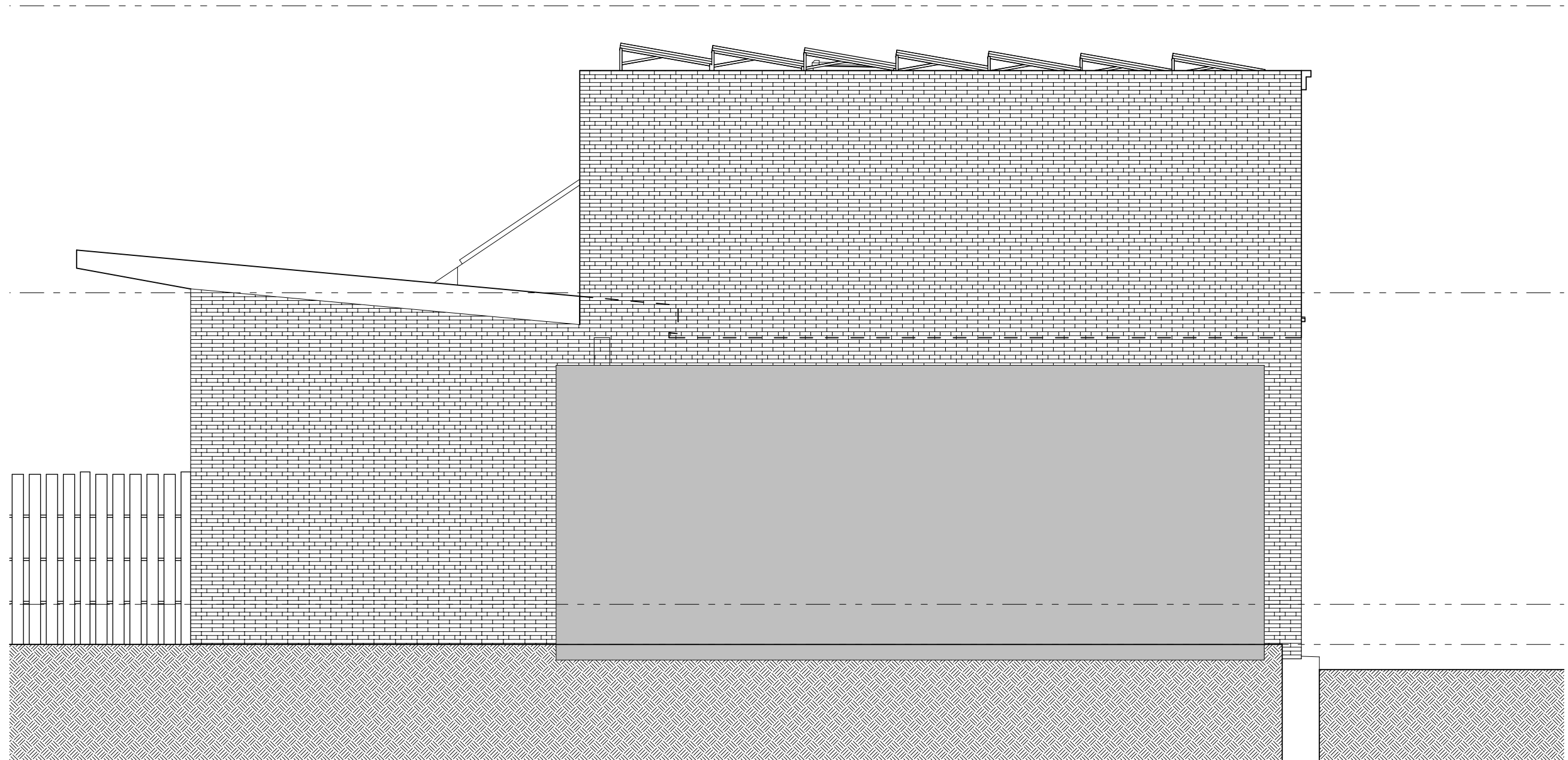
The drawings, plans, ideas specifications and/or details contained on this document [the drawings] are the creation and sole property of Trout, inc. [the creator]. No reproduction, use of the drawings or their intellectual content is authorized without expressed written consent of the creator.



1 East Elevation
 SCALE: 1/4" = 1'-0"



The drawings, plans, ideas specifications and/or details contained on this document [the drawings] are the creation and sole property of Trout, inc. [the creator]. No reproduction, use of the drawings or their intellectual content is authorized without expressed written consent of the creator.



1

WEST ELEVATION-PROPOSED

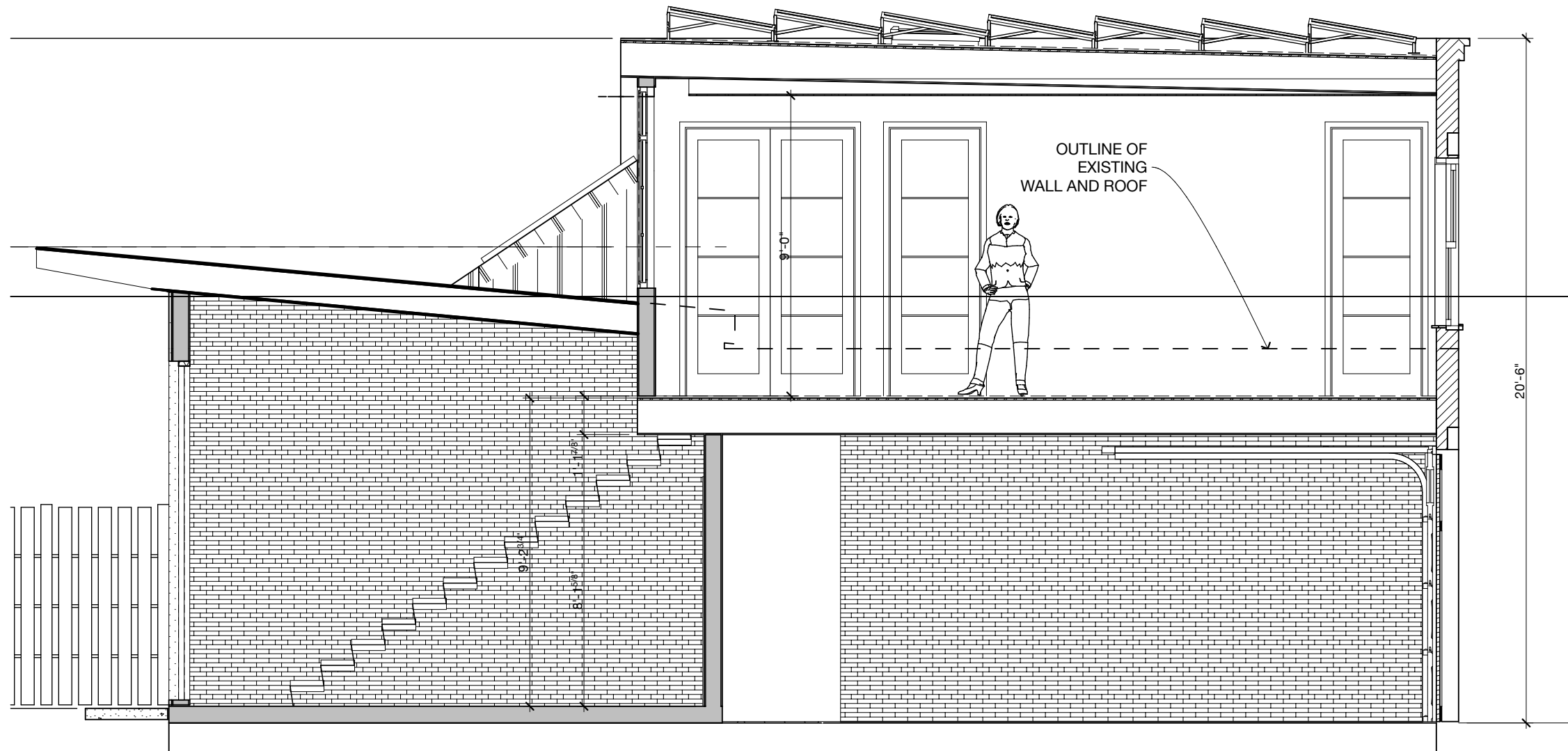


1526 New Hampshire Ave NW
Washington DC 20036
(202) 659-0600
www.troutdesign.com

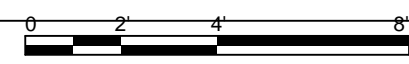
GARAGE ADDITION AND ALTERATIONS

1436 S ST NW

SD-10
West Elevation
BZA Submission
9 October 2019



1 LONG. SECTION
 SCALE: 1/4" = 1'-0"



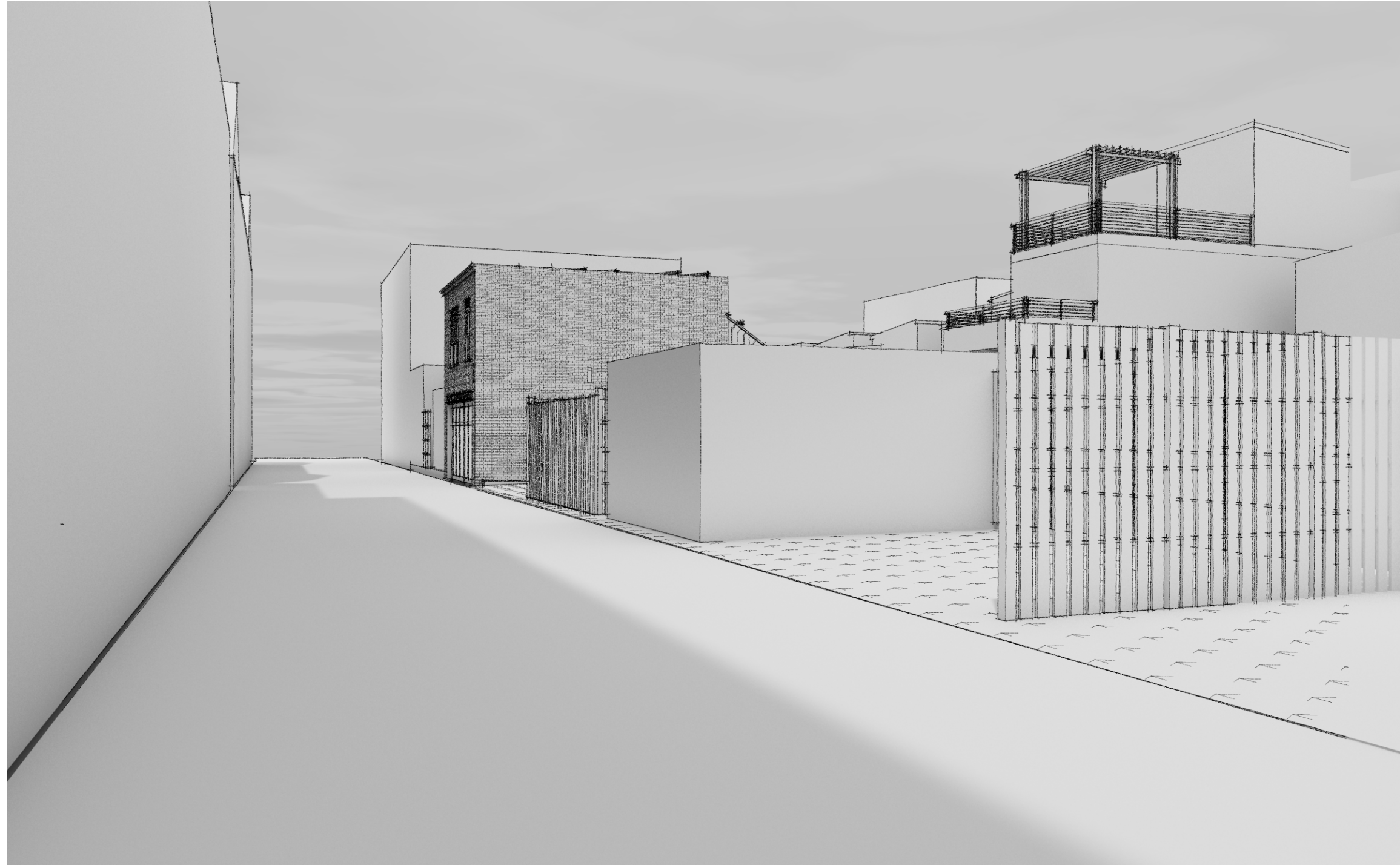
1526 New Hampshire Ave NW
 Washington DC 20036
 (202) 659-0600
 www.troutdesign.com

GARAGE ADDITION AND ALTERATIONS

1436 S ST NW

SD-11
 Building Section
 BZA Submission
 9 October 2019

The drawings, plans, ideas specifications and/or details contained on this document [the drawings] are the creation and sole property of Trout, inc. [the creator]. No reproduction, use of the drawings or their intellectual content is authorized without expressed written consent of the creator.



alley perspective from SE

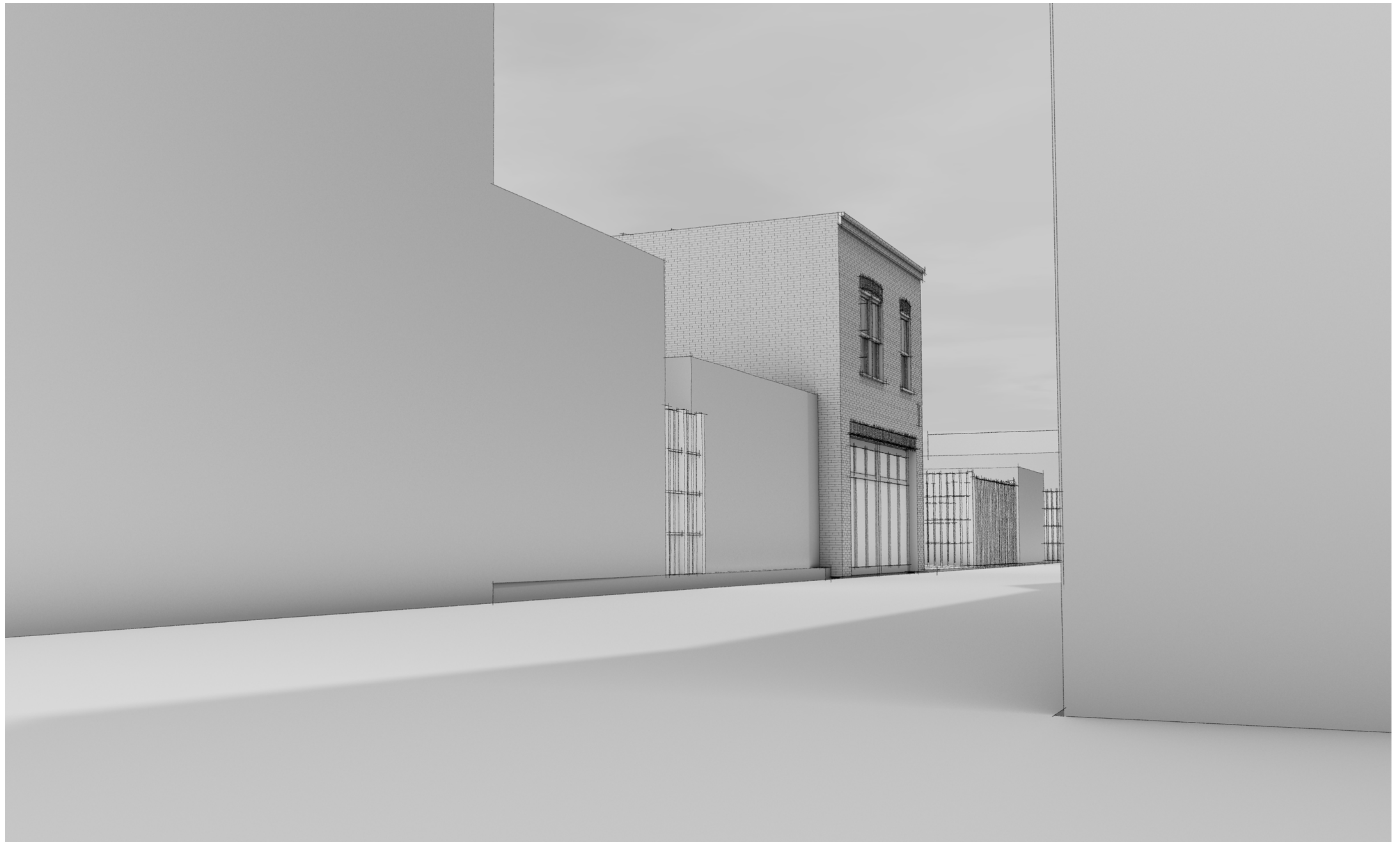


1526 New Hampshire Ave NW
Washington DC 20036
(202) 659-0600
www.troutdesign.com

GARAGE ADDITION AND ALTERATIONS

1436 S ST NW

SD-12
Alley Perspective from SE
BZA Submission
9 October 2019



alley view from SW

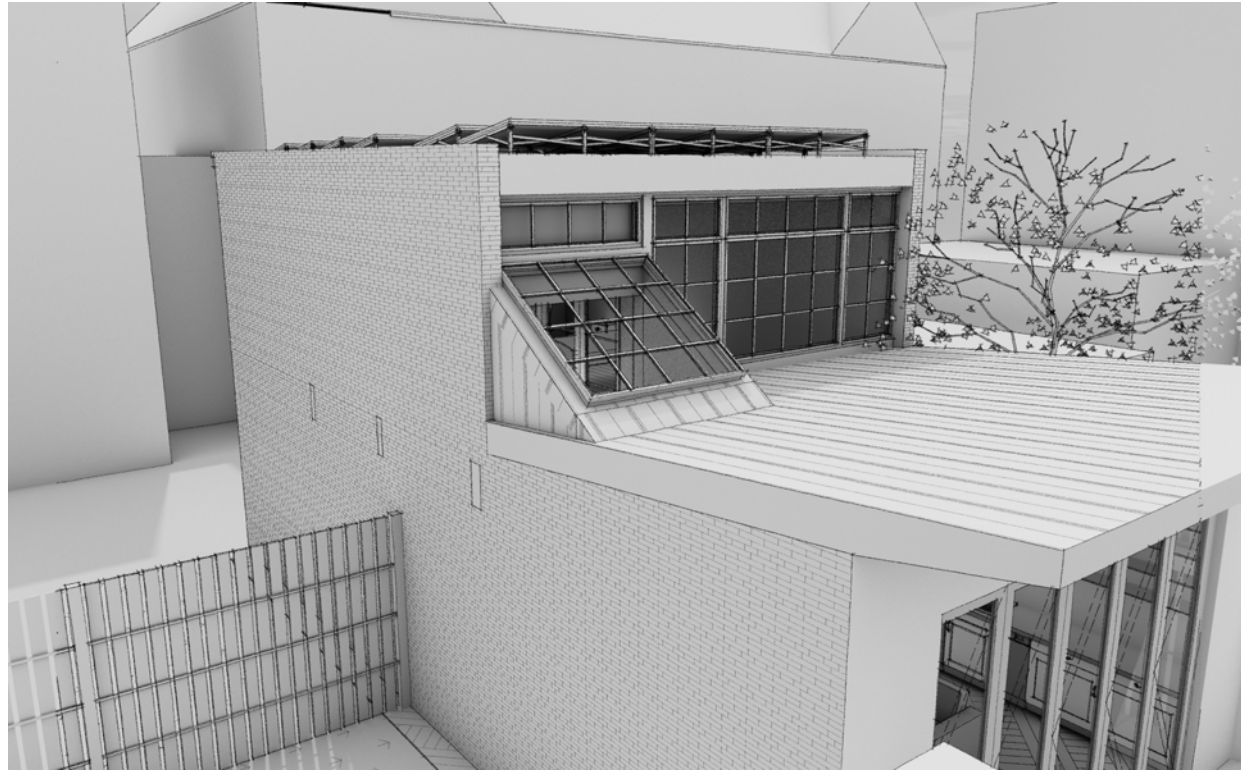
GARAGE ADDITION AND ALTERATIONS

1436 S ST NW

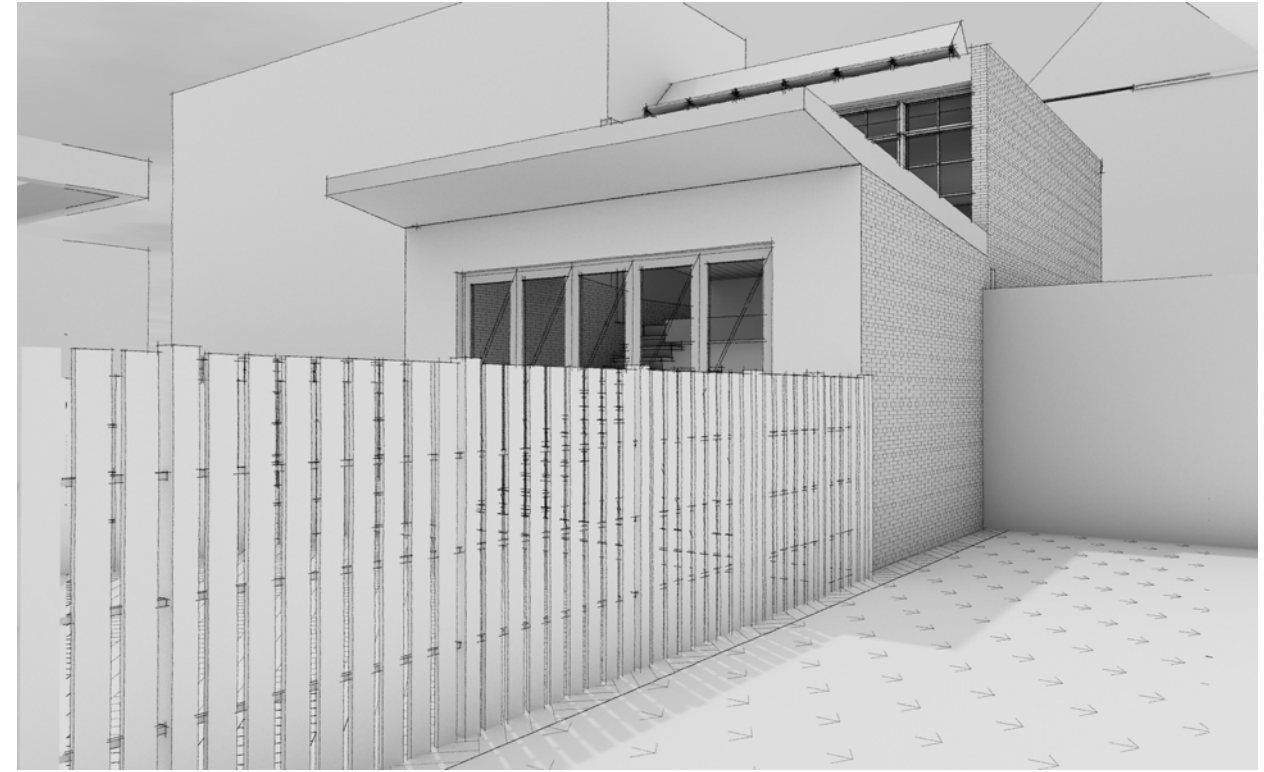


1526 New Hampshire Ave NW
Washington DC 20036
(202) 659-0600
www.troutdesign.com

SD-13
Alley Perspective from SW
BZA Submission
9 October 2019



VIEW FROM NE



VIEW FROM WEST



1526 New Hampshire Ave NW
Washington DC 20036
(202) 659-0600
www.troutdesign.com

GARAGE ADDITION AND ALTERATIONS

1436 S ST NW

SD-14
Adjacent Property Perspectives
BZA Submission
9 October 2019

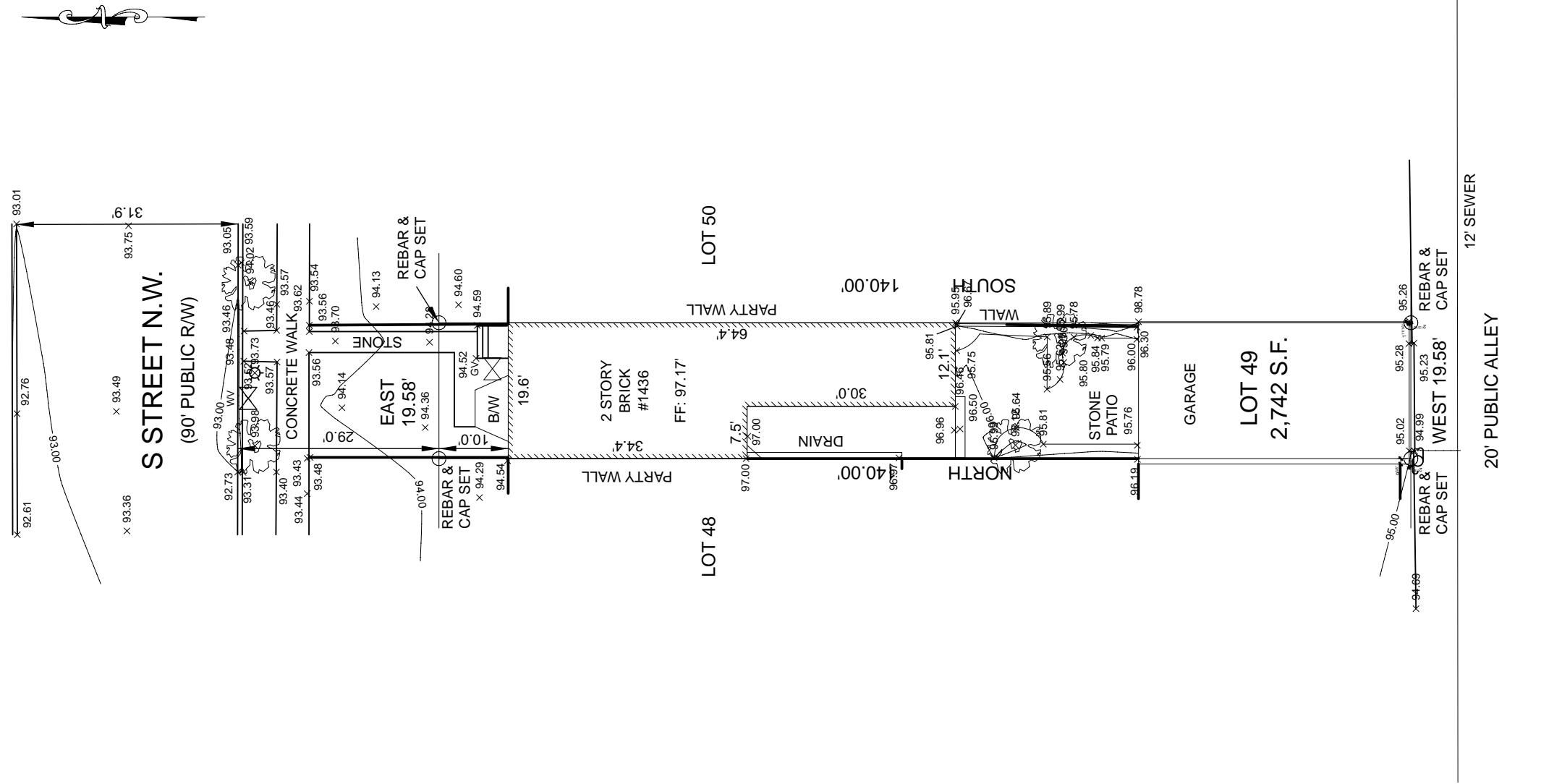


1526 New Hampshire Ave NW
 Washington DC 20036
 (202) 659-0600
 www.troutdesign.com

GARAGE ADDITION AND ALTERATIONS

1436 S ST NW

SD-15
 Site Survey
 BZA Submission
 9 October 2019



1 SURVEY
 SCALE: 1" = 20'

The drawings, plans, ideas specifications and/or details contained on this document [the drawings] are the creation and sole property of Trout, inc. [the creator]. No reproduction, use of the drawings or their intellectual content is authorized without expressed written consent of the creator.



ALLEY VIEW FROM SOUTHWEST



ALLEY VIEW FROM SOUTHEAST



1526 New Hampshire Ave NW
Washington DC 20036
(202) 659-0600
www.troutdesign.com

GARAGE ADDITION AND ALTERATIONS

1436 S ST NW

SD-16
Existing Photos
BZA Submission
9 October 2019

The drawings, plans, ideas specifications and/or details contained on this document [the drawings] are the creation and sole property of Trout, inc. [the creator]. No reproduction, use of the drawings or their intellectual content is authorized without expressed written consent of the creator.