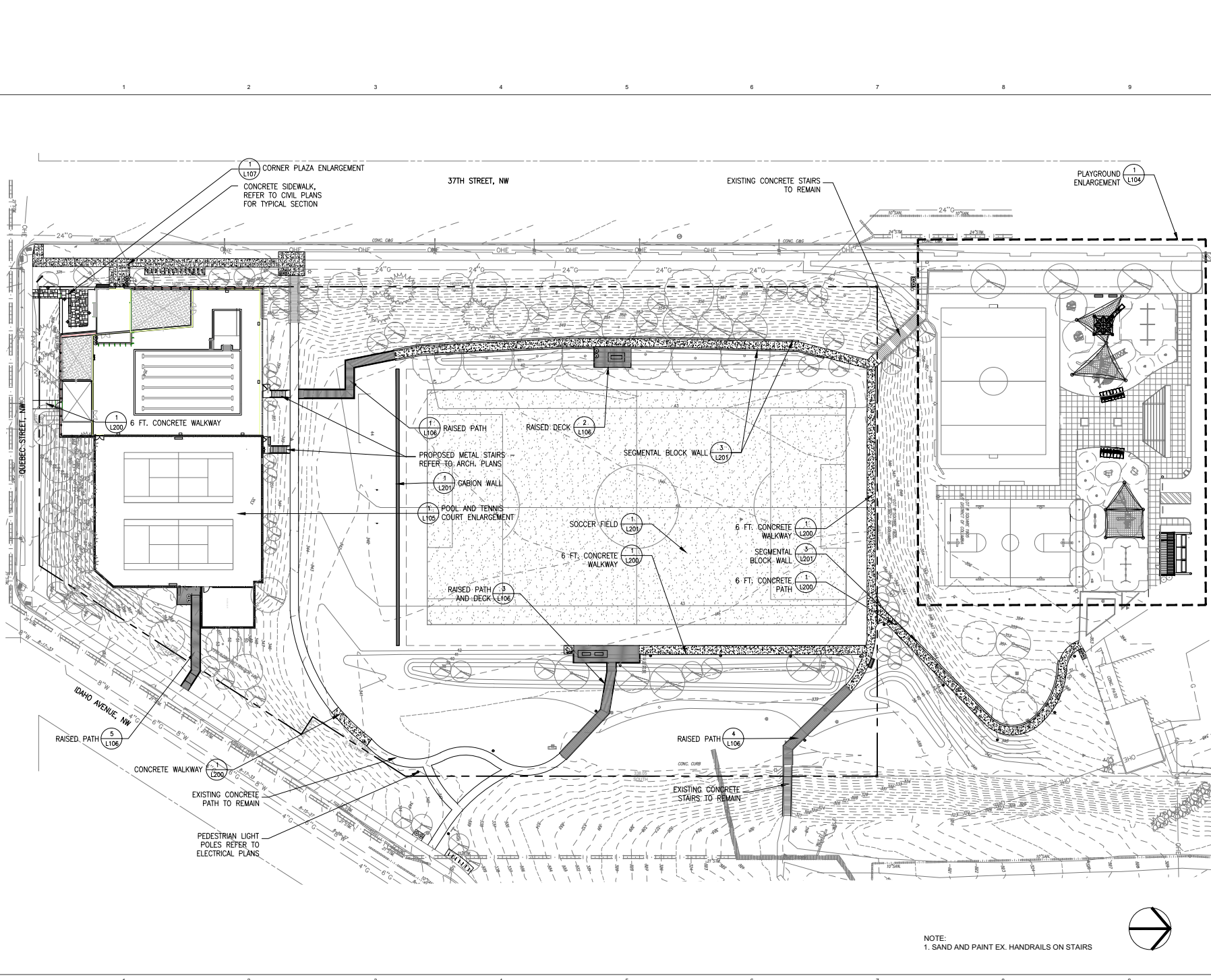


Tab C



1 L107 CORNER PLAZA ENLARGEMENT
CONCRETE SIDEWALK,
REFER TO CIVIL PLANS
FOR TYPICAL SECTION

PLAYGROUND ENLARGEMENT 1 L104

37TH STREET, NW

EXISTING CONCRETE STAIRS
TO REMAIN

1 L200 6 FT. CONCRETE WALKWAY

1 L106 RAISED PATH

2 L106 RAISED DECK

3 L201 SEGMENTAL BLOCK WALL

PROPOSED METAL STAIRS
REFER TO ARCH. PLANS

1 L201 CABION WALL

1 L106 POOL AND TENNIS
COURT ENLARGEMENT

1 L201 SOCCER FIELD

1 L200 6 FT. CONCRETE
WALKWAY

2 L201 SEGMENTAL
BLOCK WALL

1 L200 6 FT. CONCRETE
WALKWAY

3 L106 RAISED PATH
AND DECK

1 L200 6 FT. CONCRETE
PATH

5 L106 RAISED PATH

4 L106 RAISED PATH

1 L200 CONCRETE WALKWAY

EXISTING CONCRETE
PATH TO REMAIN

EXISTING CONCRETE
STAIRS TO REMAIN

PEDESTRIAN LIGHT
POLES REFER TO
ELECTRICAL PLANS

NOTE:
1. SAND AND PAINT EX. HANDRAILS ON STAIRS



PROJECT
Hearst Park & Pool
3950 37th Street, NW
Washington, DC 20008

OWNER'S REPRESENTATIVE
Department of General Services
2000 14th Street NW, 8th Floor
Washington DC, 20009

ARCHITECT
cox grae + spack architects
2309 M Street NW
Washington DC 20007
T: 202.965.7070
F: 202.965.7144

CIVIL ENGINEER
Wiles Mensch Corporation
Address: 510 8th Street SE
Washington DC 20003
T: 202.456.9384

STRUCTURAL ENGINEER
Simpson Gumpertz & Heger Inc.
1625 Eye Street NW, Suite 900
Washington, DC 20006
T: 202.393.4199



MPE ENGINEER
Setty & Associates International, PLLC
Address: 5135 MacArthur Blvd., Suite 220
Washington, DC 20016
T: 202.393.1523

LANDSCAPE ARCHITECT
CGLA
1025 Connecticut Avenue NW, Suite 1000
Washington, DC 20006
T: 202.857.9720

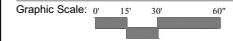


POOL CONSULTANT
Counsilman-Hunsaker
10733 Sunset Office Dr., Suite 400
St. Louis, MO 63127
T: 314.894.1245

AVI / ITI ACOUSTICS CONSULTANT
Polysonics
405 Belle Air Lane
Warrenton, VA 20186
T: 540.341.4988

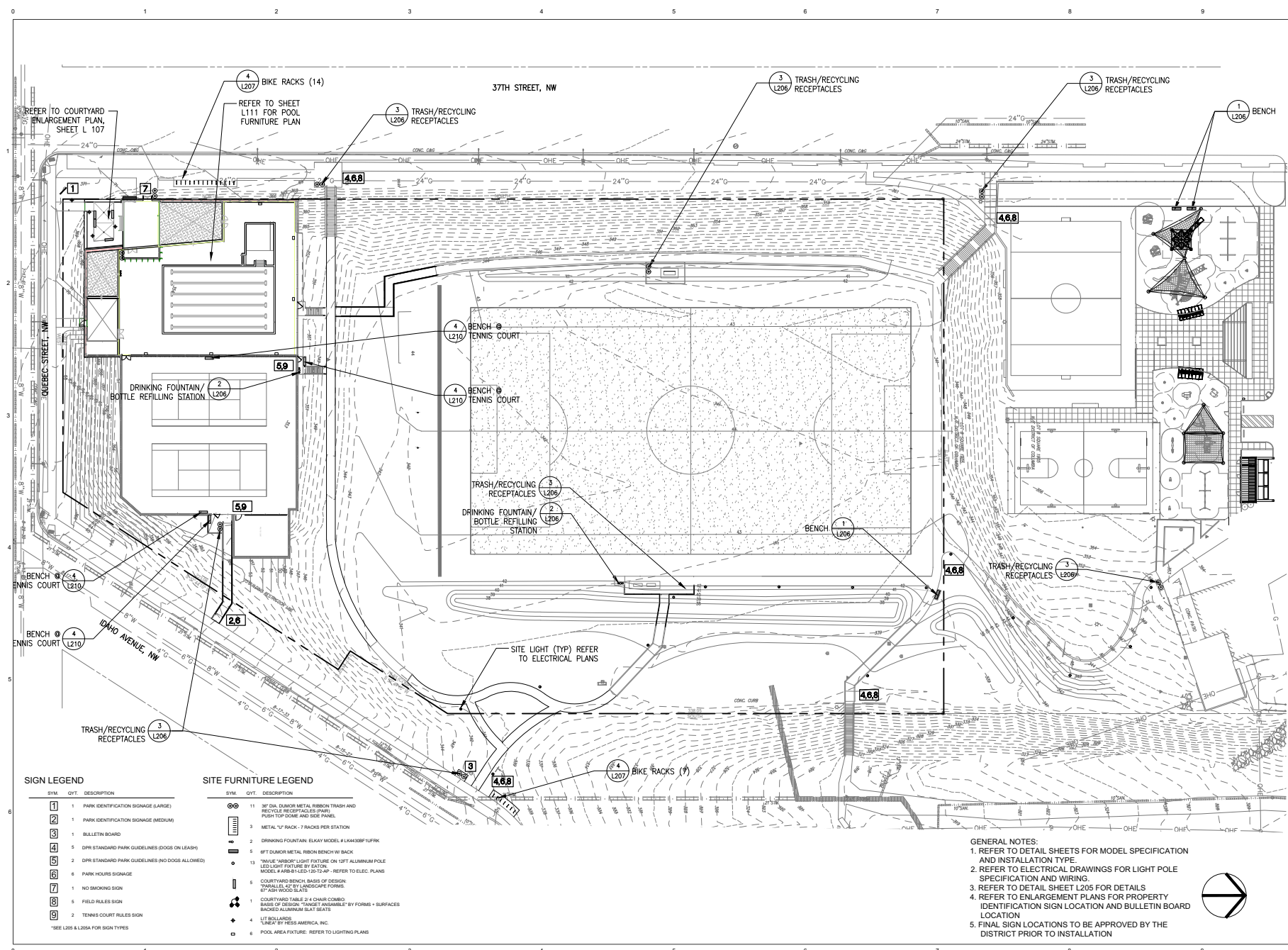
Mark	Date	Description
01	6/11/18	Design Development Set
02	11/20/18	FTG Permit Submission
03	02/06/19	Permit Submission
04	03/20/19	Building Permit

Drawing Title:
Landscape Site Plan



Project No: 1614
Date: 01/14/2019
Drawing No:

L 101



SIGN LEGEND

SYM.	QTY.	DESCRIPTION
1	1	PARK IDENTIFICATION SIGNAGE (LARGE)
2	1	PARK IDENTIFICATION SIGNAGE (MEDIUM)
3	1	BULLETIN BOARD
4	5	DPSI STANDARD PARK GUIDELINES (DOGS ON LEASH)
5	2	DPSI STANDARD PARK GUIDELINES (NO DOGS ALLOWED)
6	6	PARK HOURS SIGNAGE
7	1	NO SMOKING SIGN
8	1	FIELD RULES SIGN
9	2	TENNIS COURT RULES SIGN

*SEE L205 & L205A FOR SIGN TYPES

SITE FURNITURE LEGEND

SYM.	QTY.	DESCRIPTION
11	36	36" DIA. DUMOR METAL RIBBON TRASH AND RECYCLE RECEPTACLES PARK PUSH TOP COVER AND SIDE PANEL
3	3	METAL "C" RACK - 7 BASKETS PER STATION
2	2	DRINKING FOUNTAIN, EUKAY MODEL # LK44308P HFPR
4	4	48" DIA. DUMOR METAL RIBBON BENCH W/ BACK
13	1	7'x4' HARBOR LIGHT FIXTURE ON 6" FT ALUMINUM POLE LED LIGHT FIXTURE BY EATON MODEL # KBR-16-LED-2-CL-AP - REFER TO ELEC. PLANS
5	1	COURTYARD BENCH BASIS OF DESIGN: W/VALETTA #4 LUSCANDI FORMS BY JOSH WOOD SLATS
1	1	COURTYARD TABLE 2' x 4' CHAIR COMBO: BASIS OF DESIGN: "TRANCE" FURNISHABLE BY FORMS + SURFACES BACKED ALUMINUM SLAT SEATS
11	1	LIT BOLLARD: "LINEA" BY HESS AMERICA, INC.
6	1	POOL AREA FIXTURE: REFER TO LIGHTING PLANS

GENERAL NOTES:

- REFER TO DETAIL SHEETS FOR MODEL SPECIFICATION AND INSTALLATION TYPE.
- REFER TO ELECTRICAL DRAWINGS FOR LIGHT POLE SPECIFICATION AND WIRING.
- REFER TO DETAIL SHEET L205 FOR DETAILS.
- REFER TO ENLARGEMENT PLANS FOR PROPERTY IDENTIFICATION SIGN LOCATION AND BULLETIN BOARD LOCATION.
- FINAL SIGN LOCATIONS TO BE APPROVED BY THE DISTRICT PRIOR TO INSTALLATION.

PROJECT
Hearst Park & Pool
 3950 37th Street, NW
 Washington, DC 20008

OWNER'S REPRESENTATIVE
Department of General Services
 2000 14th Street NW, 8th Floor
 Washington DC, 20009

ARCHITECT
cox grae + spack architects
 2309 M Street NW
 Washington DC 20007
 T: 202.965.7070
 F: 202.965.7144

CIVIL ENGINEER
Wiles Mensch Corporation
 Address: 510 8th Street SE
 Washington DC 20003
 T: 202.456.9384

STRUCTURAL ENGINEER
Simpson Gumpertz & Heger Inc.
 1625 Eye Street NW, Suite 900
 Washington, DC 20006
 T: 202.239.4199

MPE ENGINEER
Setty & Associates International, PLLC
 Address: 5135 MacArthur Blvd., Suite 220
 Washington, DC 20016
 T: 202.393.1523

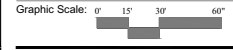
LANDSCAPE ARCHITECT
CGLA
 1025 Connecticut Avenue NW, Suite 1000
 Washington, DC 20006
 T: 202.857.9720

POOL CONSULTANT
Councilman-Hunsaker
 10733 Sunset Office Dr., Suite 400
 St. Louis, MO 63127
 T: 314.894.1245

AVI / ITI ACOUSTICS CONSULTANT
Polysonics
 425 Sothe Air Lane
 Warrenton, VA 20188
 T: 540.341.4988

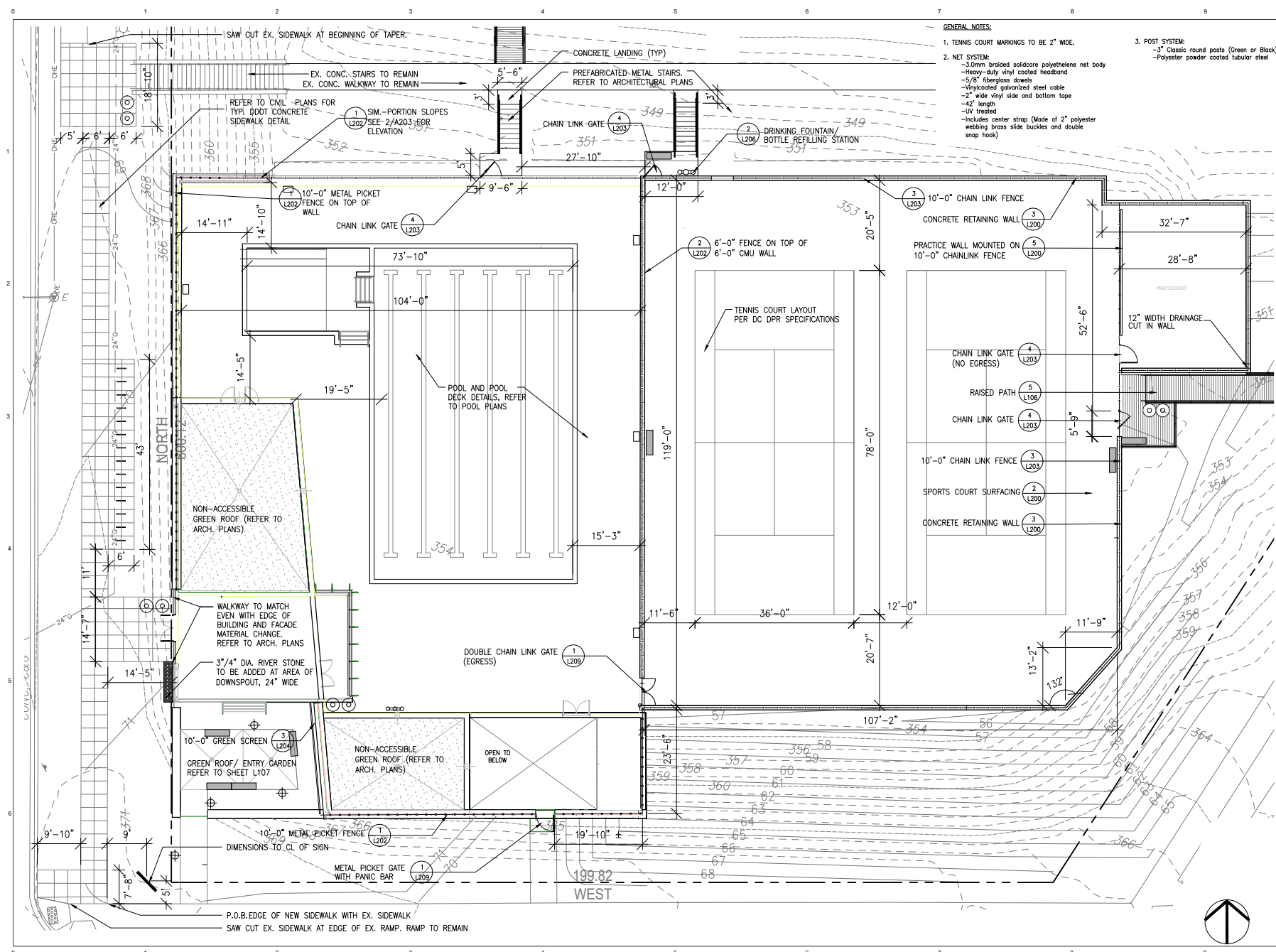
Mark	Date	Description
01	6/11/18	Design Development Set
02	11/20/18	FTG Permit Submission
03	02/06/19	Permit Submission
04	03/20/19	Building Permit

Drawing Title:
 Site Furniture, Site Signage and
 Lighting Layout Plan



Project No: **1614** Date: **01/14/2019**

Drawing No: **L 103**



- GENERAL NOTES:**
- TENNIS COURT MARKINGS TO BE 2" WIDE.
 - NET SYSTEM:
 - 3.0mm braided solidcore polyethylene net body
 - Heavy-duty vinyl coated headband
 - 5/8" fiberglass dowels
 - UV-coated galvanized steel cable
 - 2" wide vinyl side and bottom tape
 - 42" length
 - UV treated
 - Includes center strap (Made of 2" polyester webbing brass slide buckles and double snap hook)
 - POST SYSTEM:
 - 3" Classic round posts (Green or Black)
 - Polyester powder coated tubular steel

PROJECT
Hearst Park & Pool
 3950 37th Street, NW
 Washington, DC 20008

OWNER'S REPRESENTATIVE
Department of General Services
 2000 14th Street NW, 8th Floor
 Washington DC, 20009

ARCHITECT
cox graae + spack architects
 2309 M Street NW
 Washington DC 20007
 T: 202.965.7070
 F: 202.965.7144

CIVIL ENGINEER
Wiles Mensch Corporation
 Address: 510 8th Street SE
 Washington DC 20003
 T: 202.456.9384

STRUCTURAL ENGINEER
Simpson Gumpertz & Heger Inc.
 1625 Eye Street NW, Suite 900
 Washington, DC 20006
 T: 202.239.4199

MPE ENGINEER
Setty & Associates International, PLLC
 Address: 5185 MacArthur Blvd., Suite 220
 Washington, DC 20016
 T: 202.393.1523

LANDSCAPE ARCHITECT
CGLA
 1025 Connecticut Avenue NW, Suite 1000
 Washington, DC 20006
 T: 202.857.9720

POOL CONSULTANT
Counselman-Hunsaker
 10733 Sunset Office Dr., Suite 400
 St. Louis, MO 63127
 T: 314.894.1245

AVI/IT/ACOUSTICS CONSULTANT
Polysonics
 405 Belle Air Lane
 Warrenton, VA 20188
 T: 540.341.4988

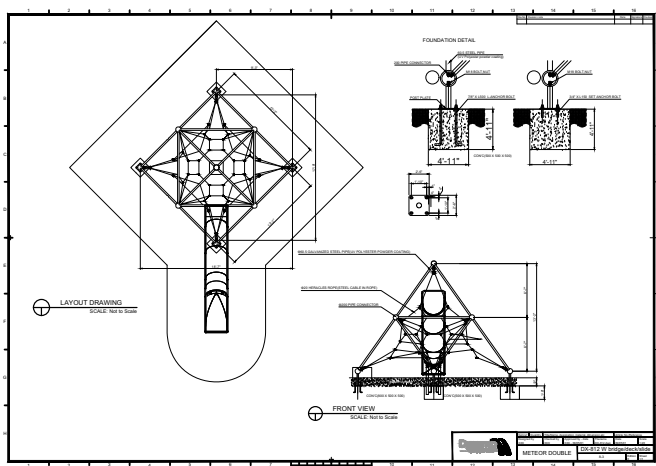
Mark	Date	Description
01	6/11/18	Design Development Set
02	11/20/18	FTG Permit Submission
03	02/06/19	Permit Submission
04	03/20/19	Building Permit

Drawing Title:
 Pool/ Tennis Enlargements

Graphic Scale: 0' 5' 10' 20'

Project No: 1614
 Date: 01/14/2019

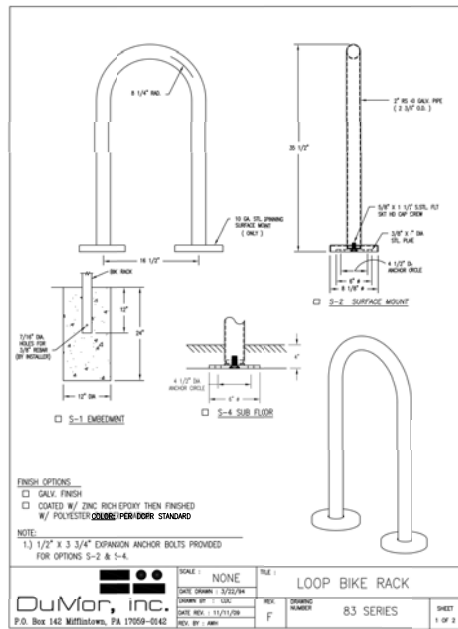
Drawing No:
L 105



BASIS OF DESIGN:
 DX-802 (METEOR REGULAR)
 BY: DYNAMO PLAYGROUNDS, INC.
 MOUNTING PER MANUFACTURER'S SPECIFICATIONS

3 TENSILE ROPE CLIMBER

SCALE: Not to Scale



FINISH OPTIONS:
 GALV. FINISH
 COATED W/ ZINC RICH EPOXY THEN FINISHED
 W/ POLYESTER POWDER COAT PER STANDARD

NOTE:
 1) 1/2\"/>

SCALE: NONE	TITLE: LOOP BIKE RACK
DATE DRAWN: 3/25/14	REV: F
DRAWN BY: T. LUC	DRAWING NUMBER: 83 SERIES
DATE REV: 11/11/19	SHEET: 1 OF 2
REV. BY: J. AME	

4 BIKE RACK (EMBEDDED)

SCALE: Not to Scale

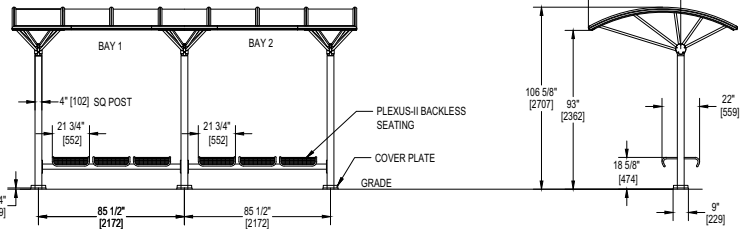
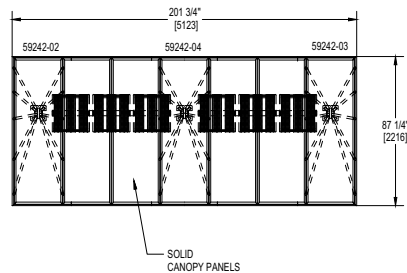
Kaleidoscope OS Product Drawing

Shelter, Three Post, Offset Canopy, Solid panels, Above Grade Mount

landscapeforms

www.landscapeforms.com Ph: 800.521.2546

ATTACHED PLEXUS-II BACKLESS SEATING IN BAY 1 AND BAY 2, NO ARMS



NOTE:
 SEE KALEIDOSCOPE INSTALLATION GUIDE FOR FOOTING DETAILS.

- APPROVED
- REVISE AND RESUBMIT
- REJECTED

COMMENTS MADE ON THESE SUBMITTALS ARE FOR INFORMATION ONLY. ANY CHANGES REQUIRE RE-SUBMITTAL AND APPROVAL. CUSTOMER IS RESPONSIBLE FOR CONFIRMING ALL QUANTITIES, DIMENSIONS, AND INSTALLATION TECHNIQUES.

BY: _____ DATE: _____

MODEL SPECIFICATION:
 MODEL: KALEIDOSCOPE OS
 88\"/>

Drawing: KA547-01
 Date: 05/20/2011
 Dimensions are in Inches(mm)
 U.S. Patent Nos. D420,812; D421,132; D412,993; D413,314

CONFIDENTIAL DRAWING INFORMATION CONTAINED HEREIN IS THE PROPERTY OF LANDSCAPE FORMS, INC. INTENDED USE IS LIMITED TO DESIGN PROFESSIONALS SPECIFYING LANDSCAPE FORMS, INC. PRODUCTS AND THEIR DIRECT CLIENTS. DRAWING IS NOT TO BE COPIED OR DISCLOSED TO OTHERS WITHOUT THE CONSENT OF LANDSCAPE FORMS, INC. © 2011 LANDSCAPE FORMS, INC. ALL RIGHTS RESERVED.

1 SHADE STRUCTURE

SCALE: Not to Scale

PROJECT
Hearst Park & Pool
 3950 37th Street, NW
 Washington, DC 20008

OWNER'S REPRESENTATIVE
Department of General Services
 2000 14th Street NW, 8th Floor
 Washington DC, 20009

ARCHITECT
cox graae + spack architects
 2309 M Street NW
 Washington DC 20007
 T: 202.965.7070
 F: 202.965.7144

CIVIL ENGINEER
Wiles Mensch Corporation
 Address: 510 8th Street SE
 Washington DC 20003
 T: 202.456.9384

STRUCTURAL ENGINEER
Simpson Gumpertz & Heger Inc.
 1625 Eye Street NW, Suite 900
 Washington, DC 20006
 T: 202.239.4199

MPE ENGINEER
Setty & Associates International, PLLC
 Address: 5155 MacArthur Blvd., Suite 220
 Washington, DC 20016
 T: 202.393.1523

LANDSCAPE ARCHITECT
CGLA
 1025 Connecticut Avenue NW, Suite 1000
 Washington, DC 20006
 T: 202.857.9720

POOL CONSULTANT
Councilman-Hunsaker
 10733 Sunset Office Dr., Suite 400
 St. Louis, MO 63127
 T: 314.894.1245

AVI / ITI ACOUSTICS CONSULTANT
Polysonics
 425 Belle Air Lane
 Warrenton, VA 20188
 T: 540.341.4988

Mark	Date	Description
01	6/11/18	Design Development Set
02	11/20/18	FTG Permit Submission
03	02/06/19	Permit Submission
04	03/20/19	Building Permit

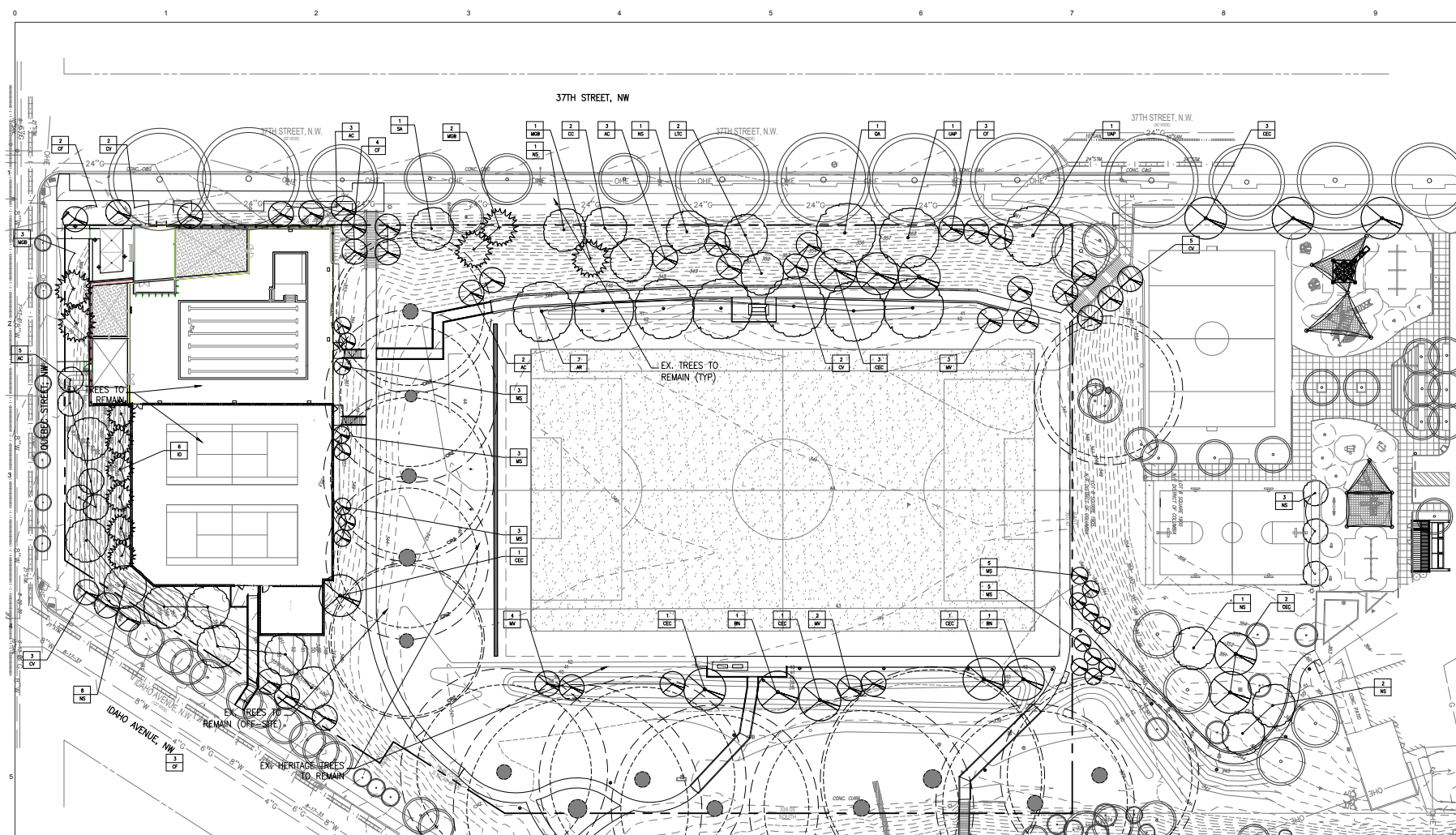
Drawing Title:

 Graphical Scale:
 Site Furnishings

Project No: _____ Date: _____
1614 01/14/2019

Drawing No:

L 207

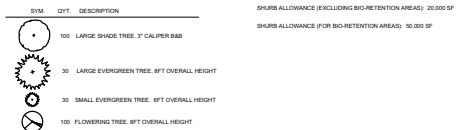


TREE SCHEDULE (ON-SITE)

Key	Qty	Botanical Name	Common Name	Size	Remarks
Trees:					
AC	13	<i>Amelanchier canadensis</i>	Serviceberry	2.5' Cal., b&b	*3 cane min.
AR	7	<i>Acer rubrum 'Columnare'</i>	Columnar Red Maple	2.5' Cal., b&b	*3 cane min.
BW	7	<i>Betula nigra</i>	River Birch	2.5' Cal., b&b	
CB	2	<i>Carpinus caroliniana</i>	American Hornbeam	2.5' Cal., b&b	*3 cane min.
CC	12	<i>Cercis canadensis</i>	Eastern Redbud	2.5' Cal., b&b	*3 cane min.
CF	12	<i>Cornus florida</i>	Flowering Dogwood	2.5' Cal., b&b	*3 cane min.
CY	16	<i>Chionanthus virginicus</i>	White Fringetree	2.5' Cal., b&b	*3 cane min.
IO	6	<i>Ilex opaca</i>	American Holly	2.5' Cal., b&b	Tall to ground
LYC	2	<i>Liriodendron tulipifera 'Compactum'</i>	Compactum Yellowtree	2.5' Cal., b&b	
MGB	6	<i>Magnolia grandiflora 'Brockens'</i>	Brockens Southern Magnolia	2.5' Cal., b&b	
MS	19	<i>Magnolia stellata</i>	Star Magnolia	2.5' Cal., b&b	
MV	9	<i>Magnolia virginiana</i>	Magnolia virginiana	2.5' Cal., b&b	
NS	13	<i>Nyssa sylvatica</i>	Black Tupelo	2.5' Cal., b&b	
QA	1	<i>Quercus alba</i>	White Oak	2.5' Cal., b&b	
SA	1	<i>Sassafras albidum</i>	Sassafras	2.5' Cal., b&b	
UAP	2	<i>Ulmus americana 'Princeton'</i>	Princeton American Elm	2.5' Cal., b&b	

****Lawn Areas Note:**
 All lawn areas to be seeded lawn.
 Seed mix composition: 10% Certified Kentucky Bluegrass
 90% Certified Tall Fescue

TREE LEGEND



PROJECT
Harst Park & Pool
 3950 37th Street, NW
 Washington, DC 20008

OWNER'S REPRESENTATIVE
Department of General Services
 2000 14th Street NW, 8th Floor
 Washington DC, 20009

ARCHITECT
cox grae + spack architects
 2309 M Street NW
 Washington DC 20007
 T: 202.965.7070
 F: 202.965.7144

CIVIL ENGINEER
Wiles Mensch Corporation
 Address: 510 8th Street SE
 Washington DC 20003
 T: 202.456.9384

STRUCTURAL ENGINEER
Simpson Gumpertz & Heger Inc.
 1625 Eye Street NW, Suite 900
 Washington, DC 20006
 T: 202.239.4199



MPE ENGINEER
Setty & Associates International, PLLC
 Address: 5155 MacArthur Blvd., Suite 220
 Washington, DC 20016
 T: 202.393.1523

LANDSCAPE ARCHITECT
CGLA
 1025 Connecticut Avenue NW, Suite 1000
 Washington, DC 20006
 T: 202.857.9720



POOL CONSULTANT
Counsilman-Hunsaker
 10733 Sunset Office Dr., Suite 400
 St. Louis, MO 63127
 T: 314.894.1245

AVI/IT/ACOUSTICS CONSULTANT
Polysonics
 405 Belle Air Lane
 Warrenton, VA 20186
 T: 540.341.4988

Mark	Date	Description
01	6/11/18	Design Development Set
02	11/20/18	FTG Permit Submission
03	02/06/19	Permit Submission
04	03/20/19	Building Permit

Drawing Title:
 Tree Planting Plan

Graphic Scale: 0' 20' 40' 80'

Project No: 1614
 Date: 01/14/2019

Drawing No: L 301