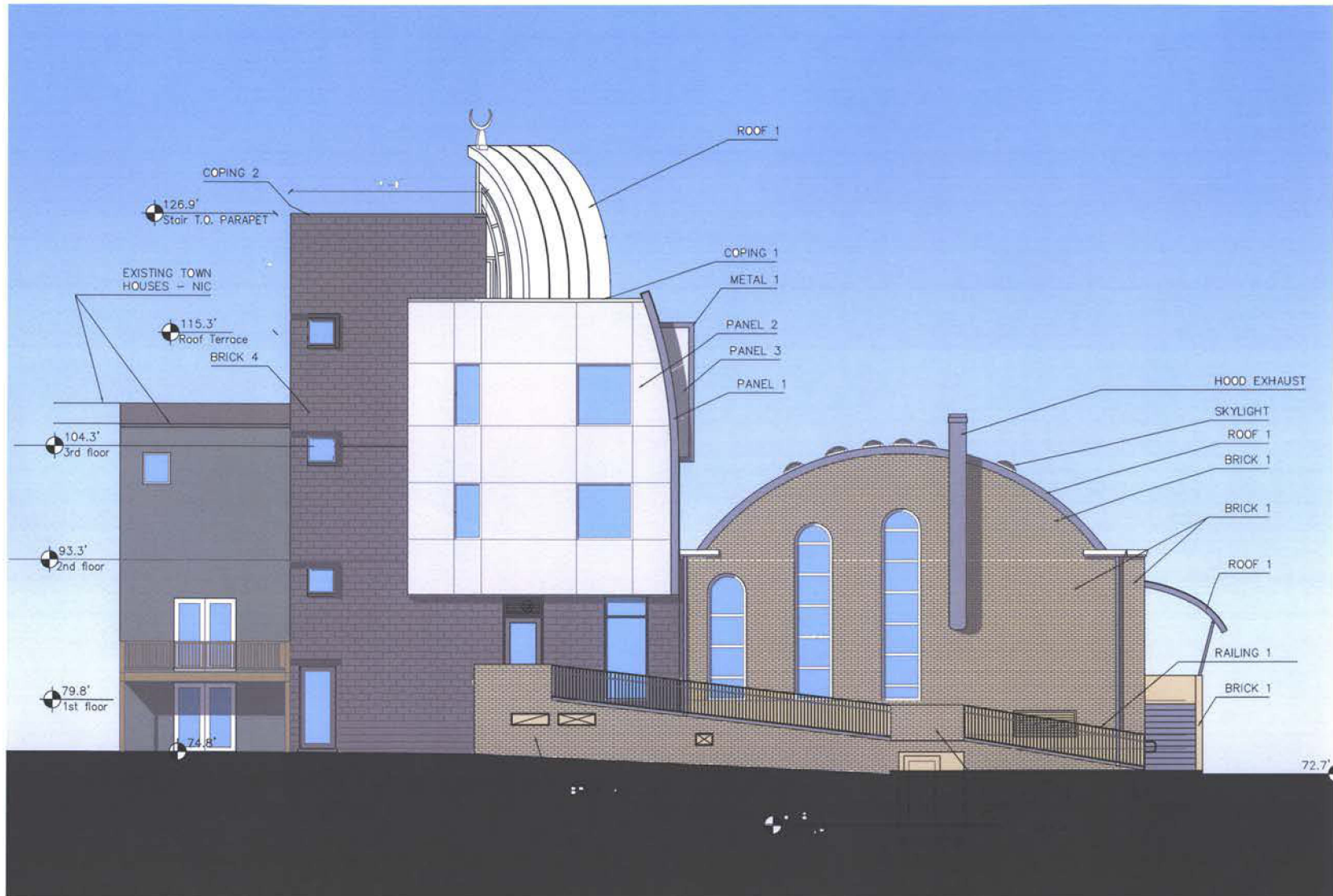


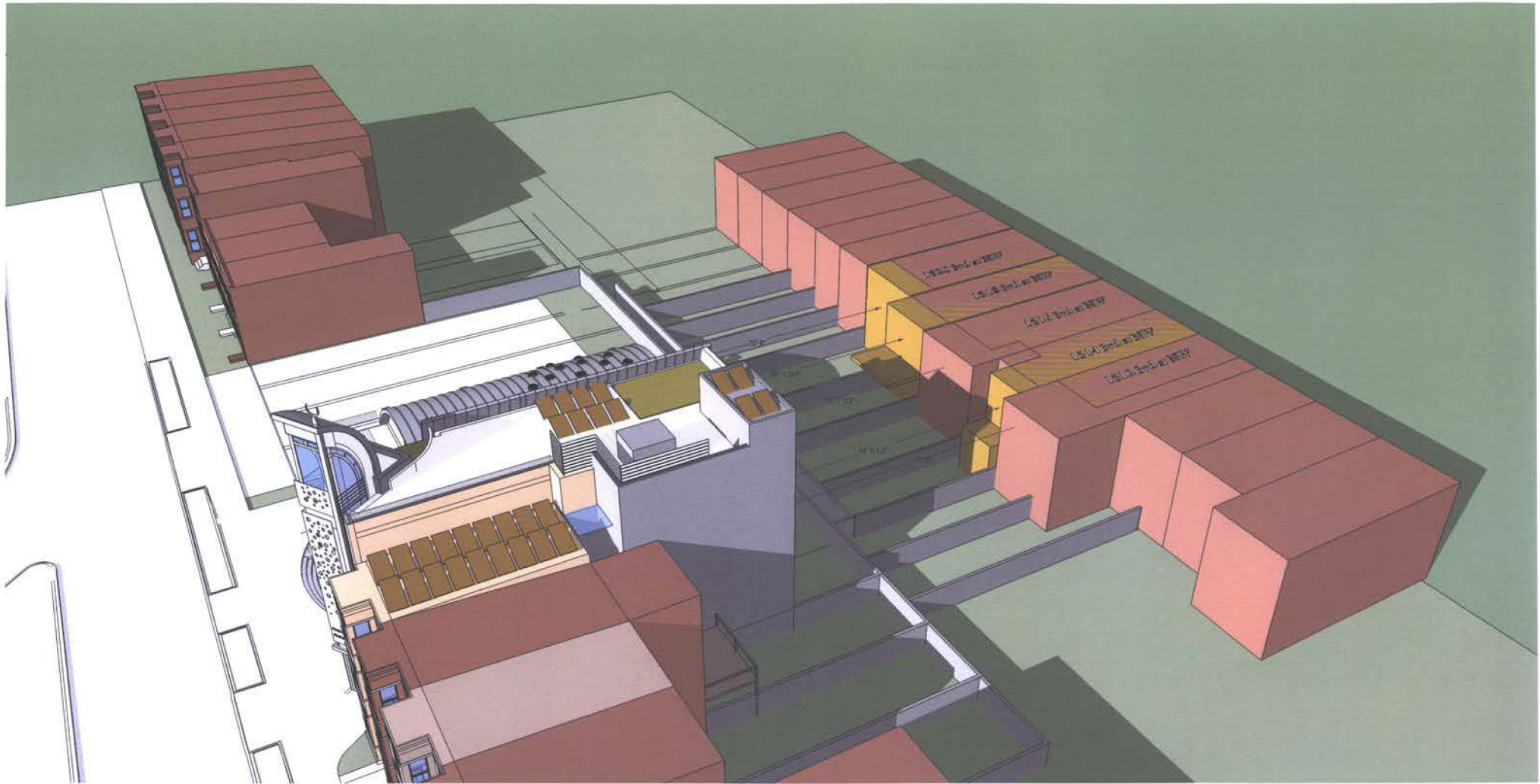
Material Legend:
 Panel 1-2: Thermoplastic Core panel or Back Painted Glass Panel
 Brick 1: Existing Yellow Brick
 Brick 2: Refurbished or new yellow brick to match existing yellow brick
 Brick 4: Gray color Ground Face brick with precast window sills.
 Coping 1: White color metal coping
 Coping 2: Dark color masonry coping.
 Roof 1: Gray color Metal Roof.

south elevation

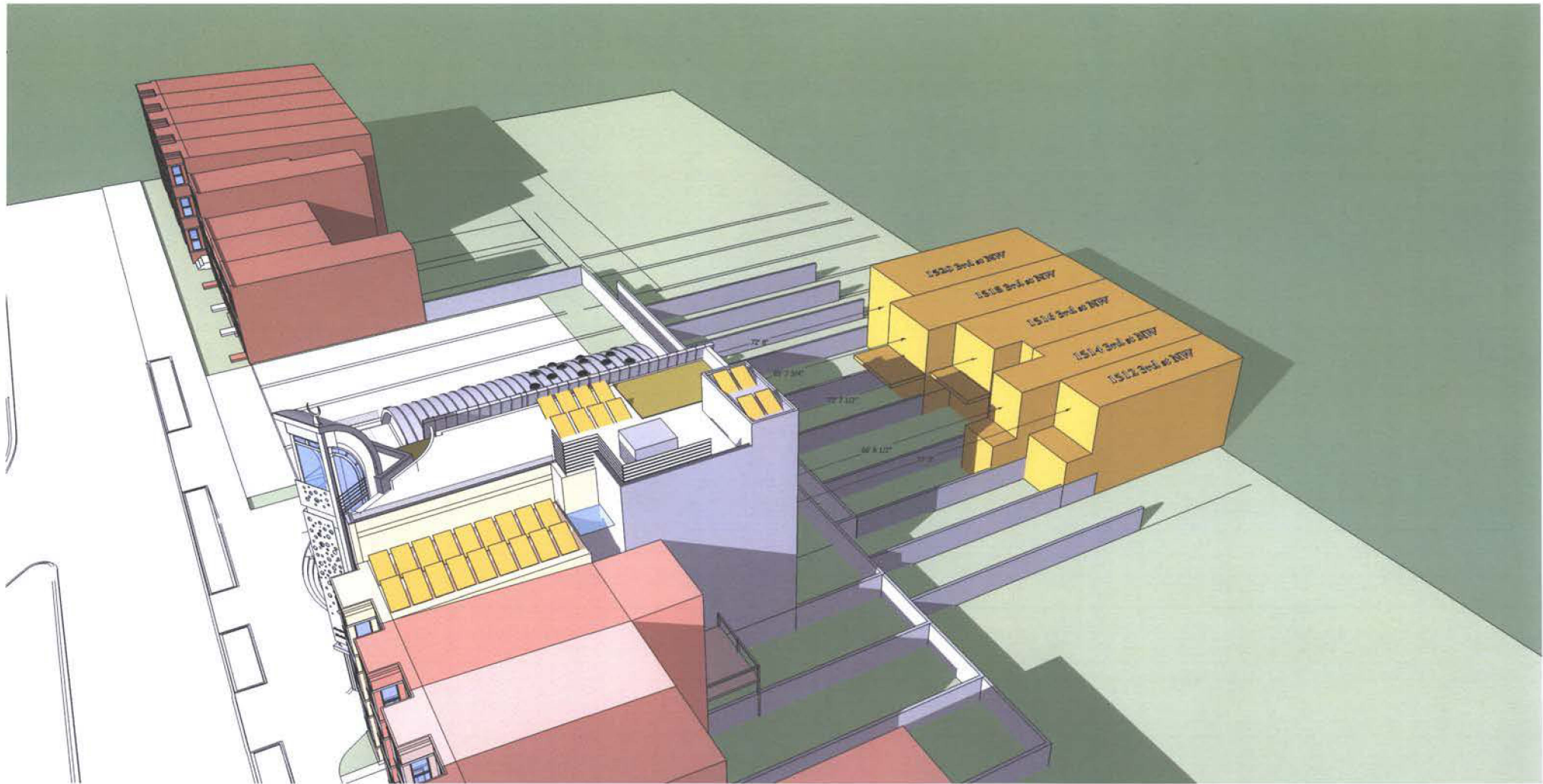


Material Legend:
 Panel 1-2: Thermoplastic Core panel or Back Painted Glass Panel
 Brick 1: Existing Yellow Brick
 Brick 2: Refurbished or new yellow brick to match existing yellow brick
 Brick 4: Gray color Ground Face brick with precast window sills.
 Coping 1: White color metal coping
 Coping 2: Dark color masonry coping.
 Roof 1: Gray color Metal Roof.

east elevation



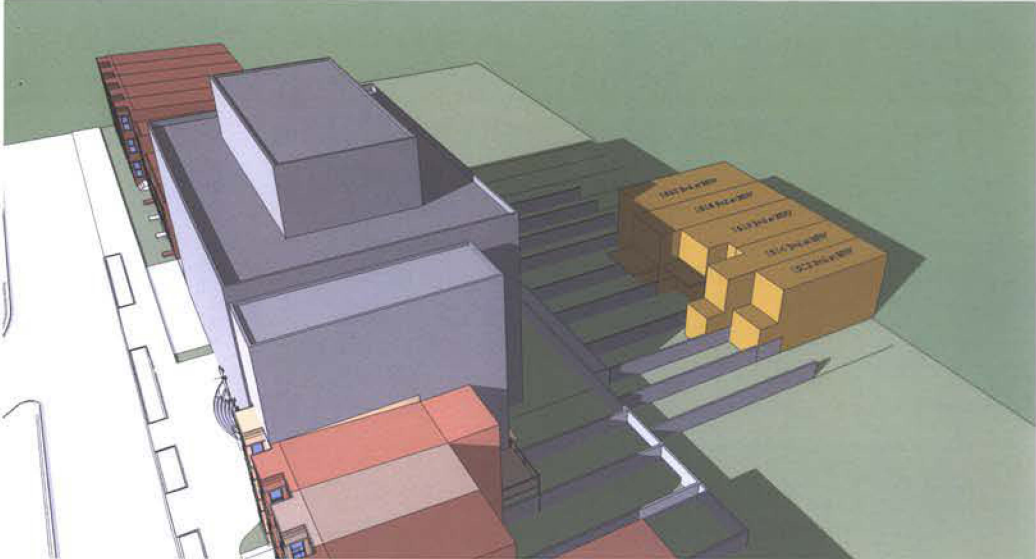
Updated yellow color Rear Neighbors Massing superimposed with brick color massing of previous exhibits.



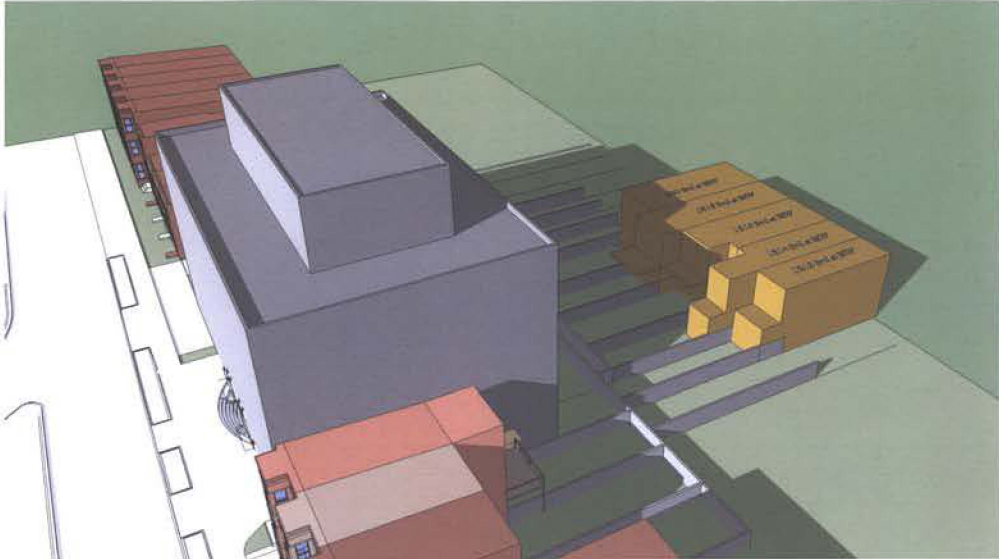
PROPOSED SCHEME March 21st, 4 pm Shadow study

Distances from proposed scheme's rear wall to objecting rear neighbors' 2nd floor are 77', 67', 74', 66', 72' for building number 1512 to 1520 respectively.

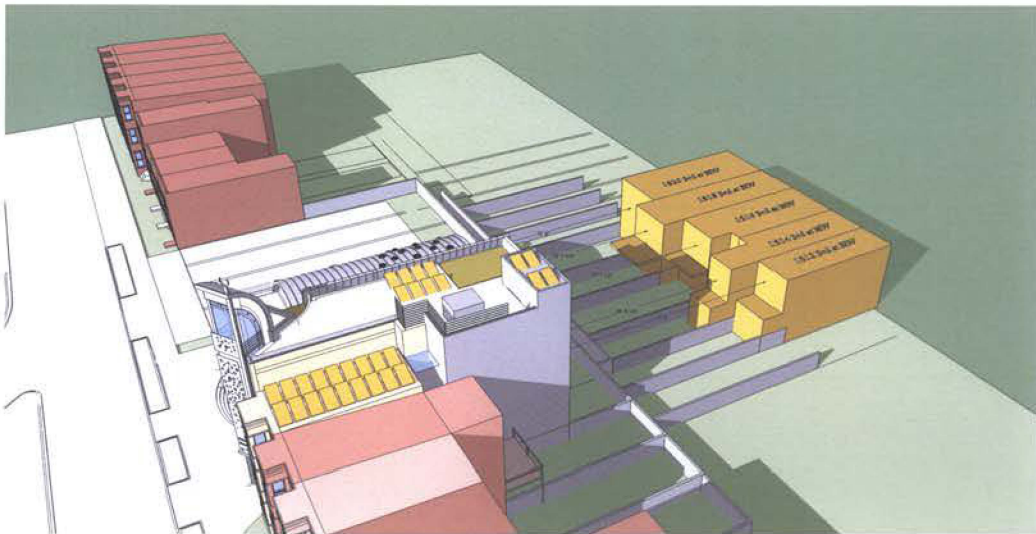
[the measurements are done via laser pointer from the owners fence; prone to $\pm 1'$ margin of error]



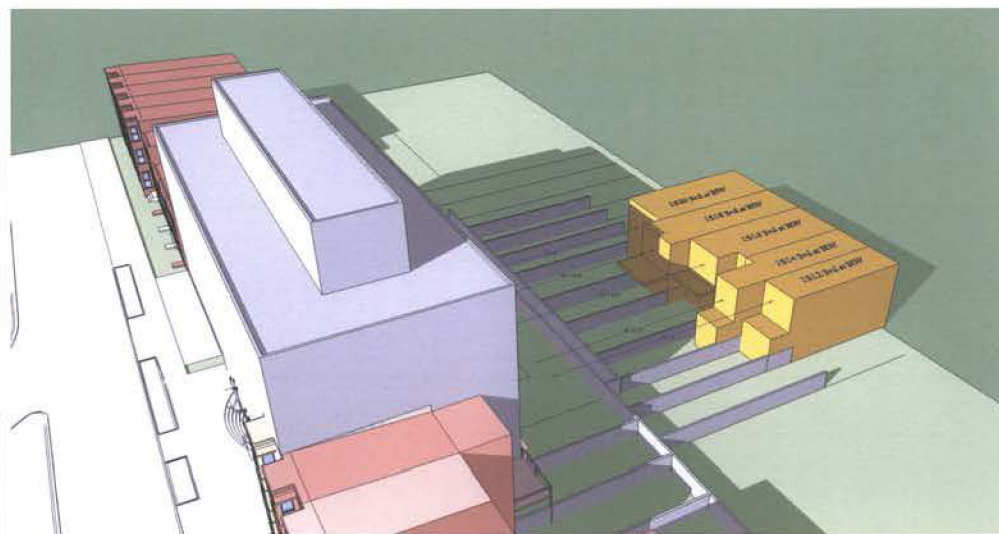
by-right option 1 - march 21st 4 pm shadow study



by-right option 2 - march 21st 4 pm shadow study

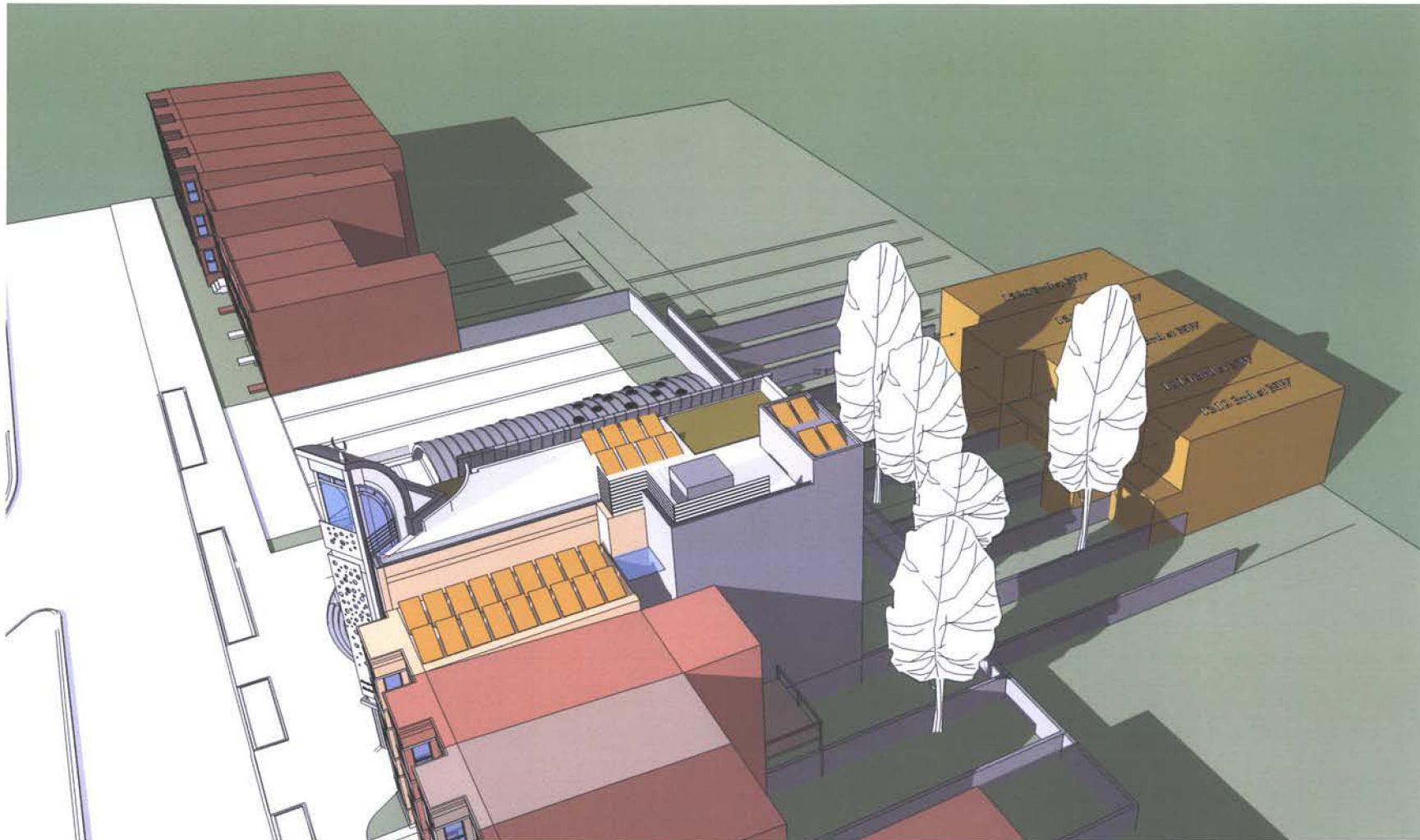


proposed design - march 21st 4 pm shadow study



by-right option 3 - march 21st 4 pm shadow study

PROPOSED AND BY RIGHT SCHEMES SHADOW STUDY COMPARISON - updated



PROPOSED SCHEME March 21st, 4 pm Shadow study with existing trees to remain at neighbor's yards.



Entire existing
tree foliage will be
kept as it is



distance to Shaw Metro station

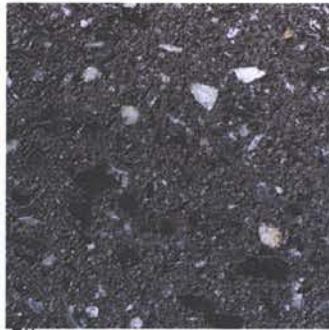
Birds flight distance from 1519 4th st NW to Shaw Metro station entrance at R and 8th st NW corner is 0.41 miles.

Legend

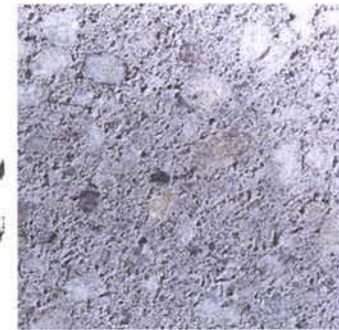
📍 1519 4th St NW



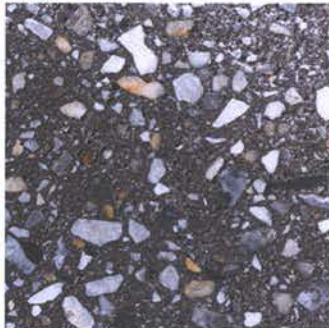
1519 4th st NW to Shaw Metro station South entrance is 0.41 mile.



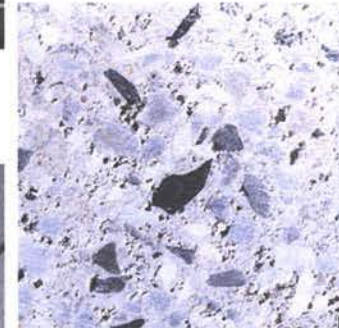
Flint



Mist



Charcoal



Glacier



Mid-night



BRICK 4 :GROUND FACE BRICK PRECEDENTS AND SAMPLES



BONE WHITE



ALABASTER

POLYESTER
WHITE

PANEL 1 AND 2: ALUCOBOND PRECEDENTS AND SAMPLES



PANEL 1 AND 2: PAINTED GLASS PRECEDENTS