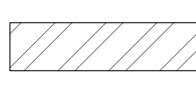
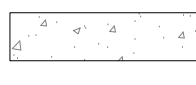



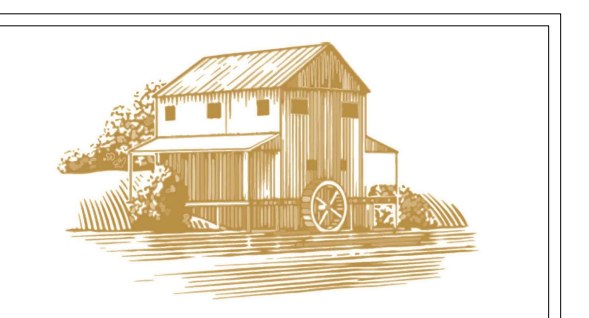


1 3RD-4TH FLOOR PLAN
1/8"=1'-0"

2 SHEET NOTES/LEGEND

-  EXTERIOR WALL - METAL PANELS
-  CONCRETE WALL
-  CMU WALL
-  PARTITION TAG
-  WINDOW TAG



COLOMA RIVER CAPITAL

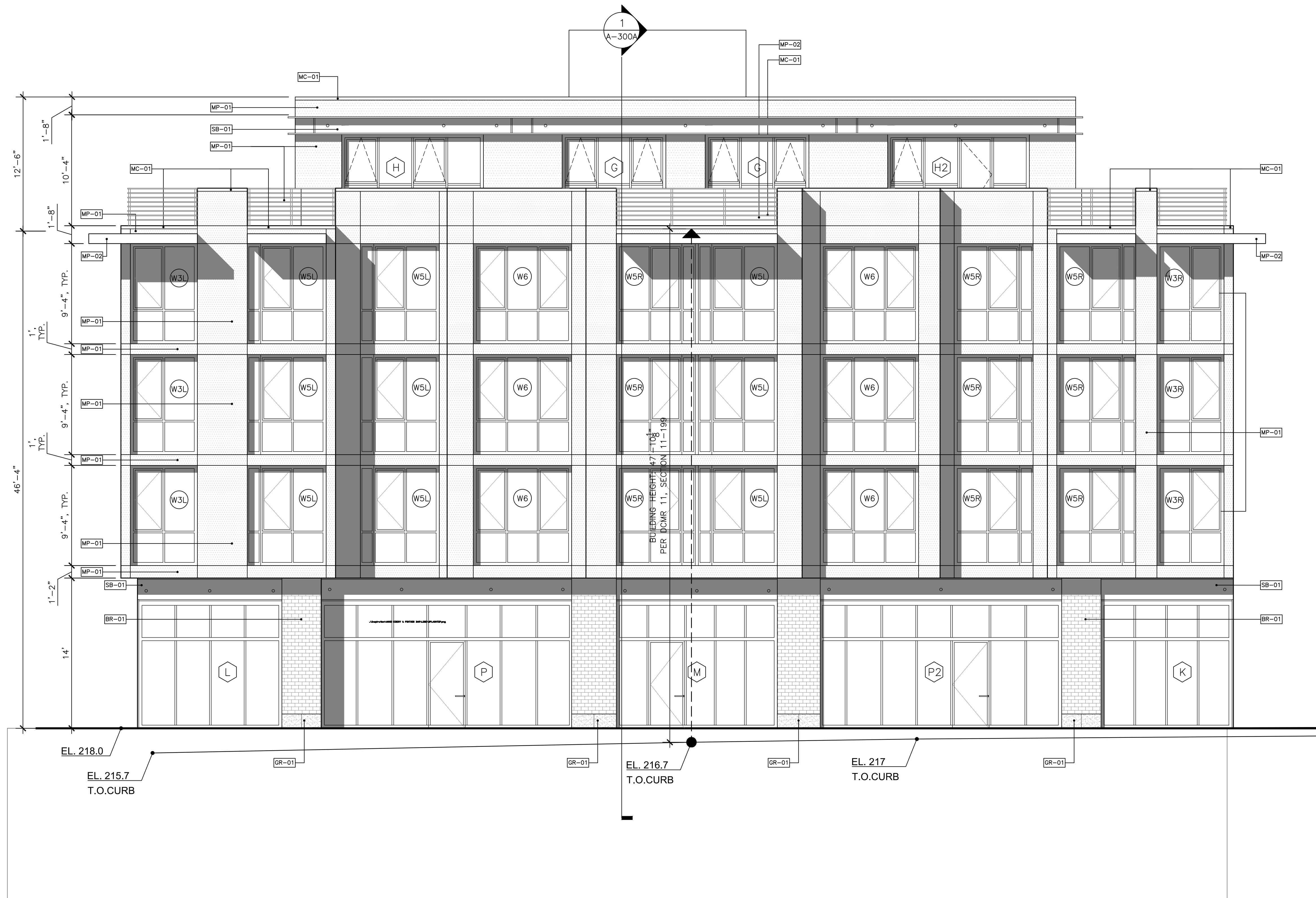
Owner:
Coloma River Capital
Address:
1140 3rd Street NW,
Suite 2151,
Washington, DC 20002
Charles Paret
202-838-6941

71 KENNEDY STR. NW
5505 1st St. NW / 67-71 Kennedy St. NW
Washington, DC 20011
PROJECT MANAGER: PENG WANG

SCALE: 1/8"=1'-0"
DATE:
PROJECT NUMBER:

SHEET TITLE
3rd-4th Floor Plan

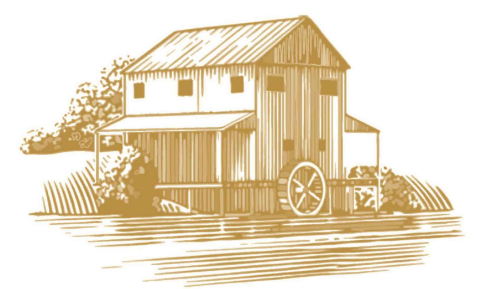
SHEET NUMBER
A-105



1 SOUTH ELEVATION @ KENNEDY STREET
3/16"=1'-0"

- | | | | |
|-------|--------------|-------------|--------------|
| BR-01 | BRICK VENEER | SB-01 | STEEL |
| MP-01 | MP-02 | METAL PANEL | GR-01 |
| | | GRANITE | MC-01 |
| | | | METAL COPING |

2 SHEET NOTES/LEGEND



COLOMA RIVER CAPITAL

Owner:
Coloma River Capital
Address:
1140 3rd Street NW,
Suite 2151,
Washington, DC 20002
Charles Paret
202-838-6941

71 KENNEDY STR. NW
5505 1st St. NW / 67-71 Kennedy St. NW
Washington, DC 20011
PROJECT MANAGER: PENG WANG

SCALE: 3/16"=1'-0"
DATE: 1/30/2019
PROJECT NUMBER:

SHEET TITLE
South Elevation

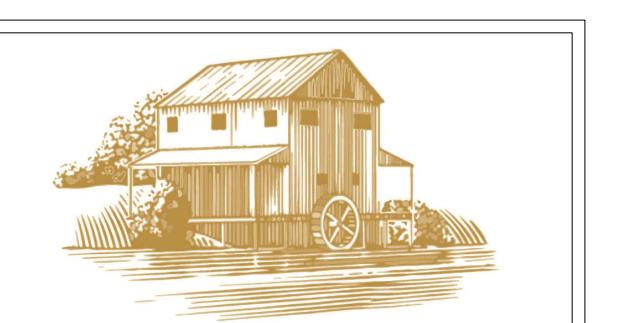
SHEET NUMBER
A-201



1 WEST ELEVATION @ 1ST STREET NW
3/16"=1'-0"

2 SHEET NOTES/LEGEND

- BR-01 BRICK VENEER SB-01 STEEL
- MP-01 MP-02 METAL PANEL GR-01 GRANITE MC-01



COLOMA RIVER CAPITAL

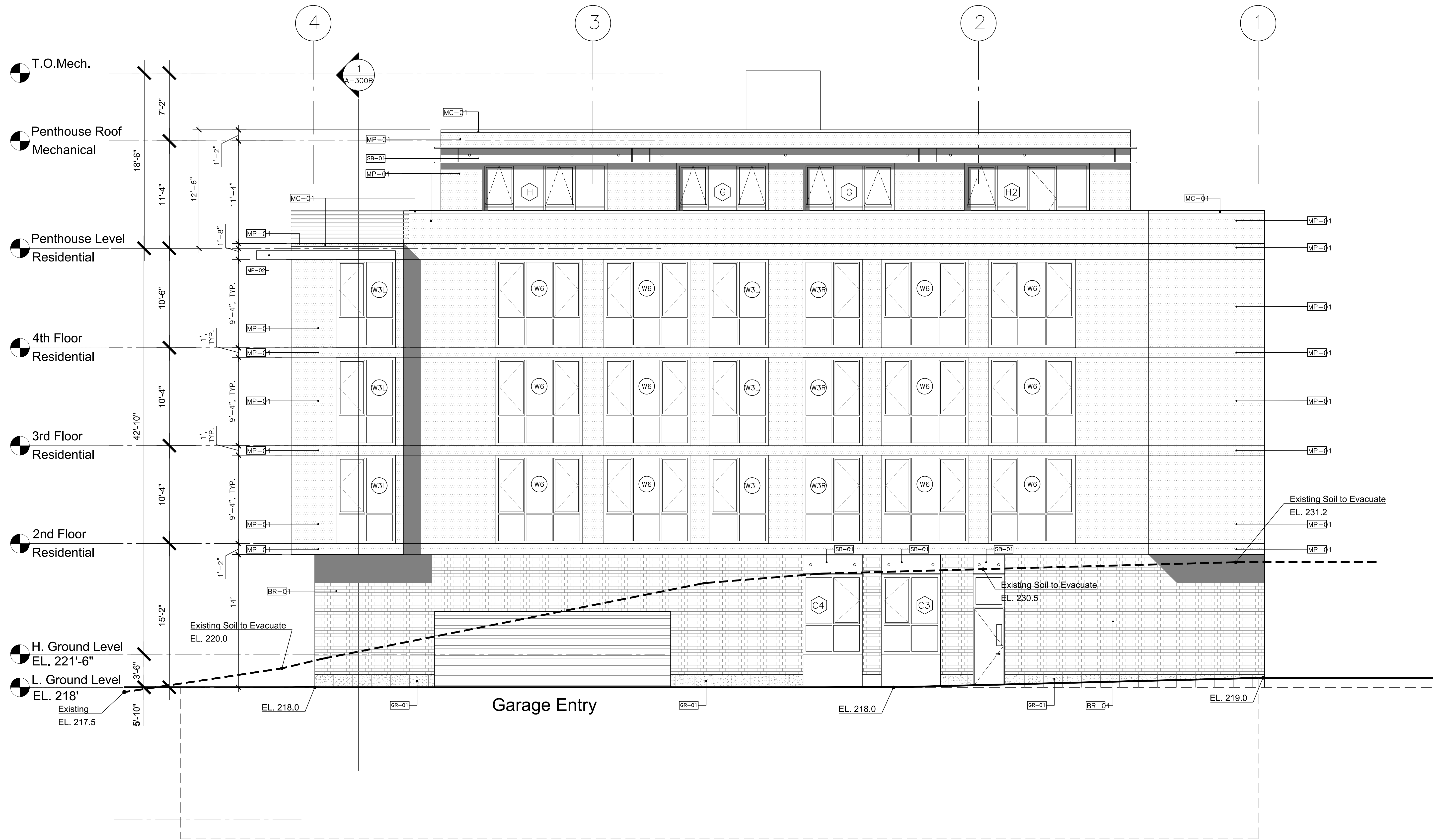
Owner:
Coloma River Capital
Address:
1140 3rd Street NW,
Suite 2151,
Washington, DC 20002
Charles Paret
202-838-6941

71 KENNEDY STR. NW
5505 1st St. NW / 67-71 Kennedy St. NW
Washington, DC 20011
PROJECT MANAGER: PENG WANG

SCALE: 3/16"=1'-0"
DATE:
PROJECT NUMBER:

SHEET TITLE
West Elevation

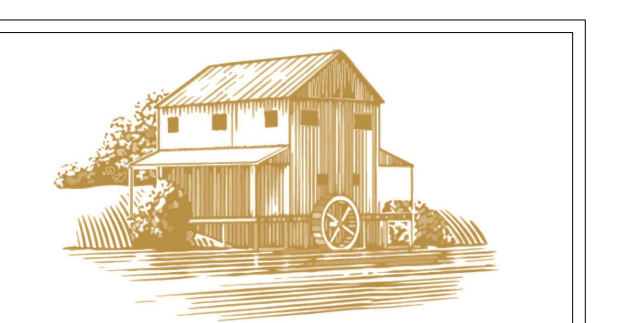
SHEET NUMBER
A-202



1 EAST ELEVATION © ALEEY
3/16"=1'-0"

- BR-01 BRICK VENEER SB-01 STEEL
- MP-01 MP-02 METAL PANEL GR-01 GRANITE MC-01

2 SHEET NOTES/LEGEND



COLOMA RIVER CAPITAL

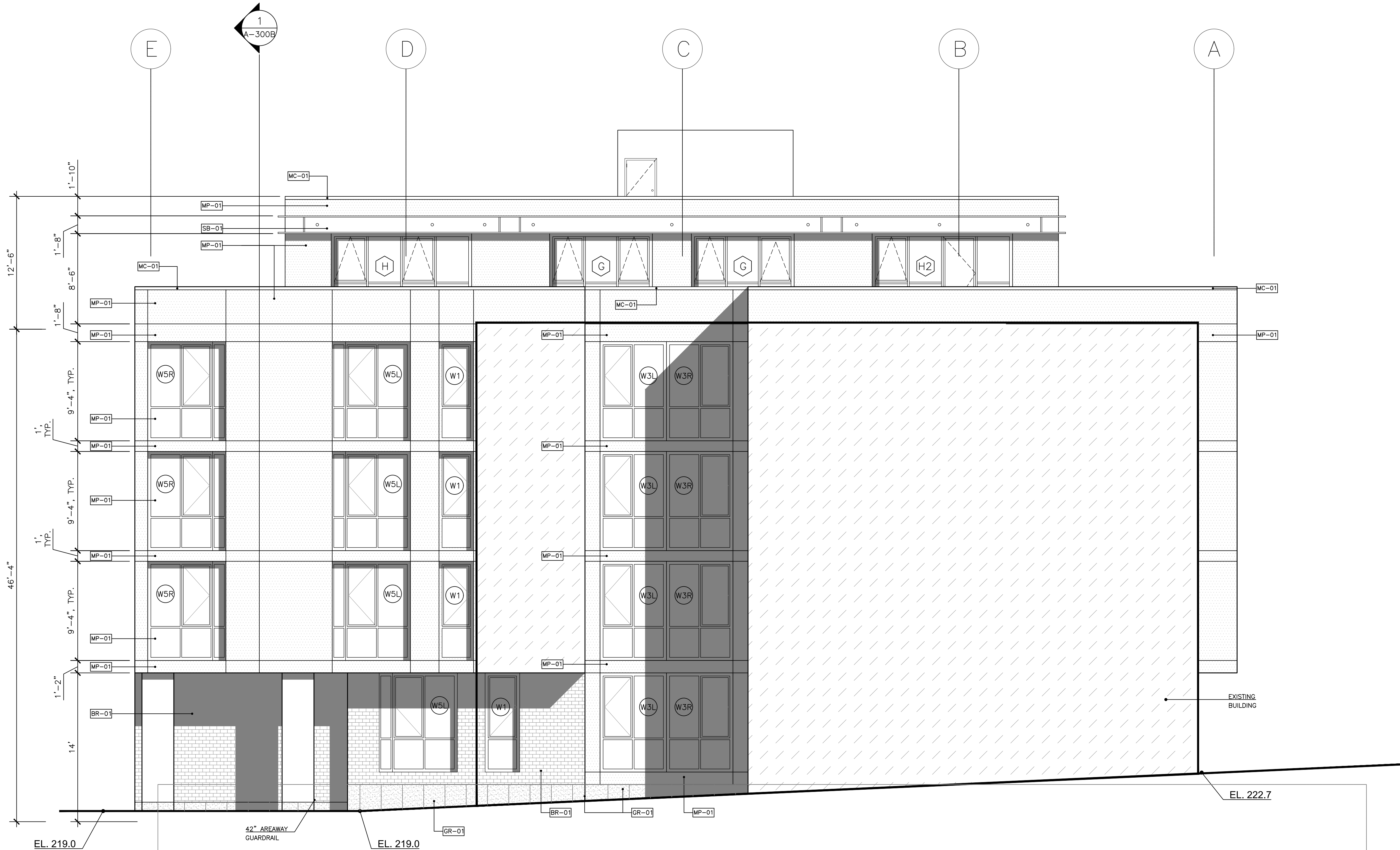
Owner:
Coloma River Capital
Address:
1140 3rd Street NW,
Suite 2151,
Washington, DC 20002
Charles Paret
202-838-6941

71 KENNEDY STR. NW
5505 1st St. NW / 67-71 Kennedy St. NW
Washington, DC 20011
PROJECT MANAGER: PENG WANG

SCALE: 3/16"=1'-0"
DATE: 1/30/2019
PROJECT NUMBER:

SHEET TITLE
East Elevation

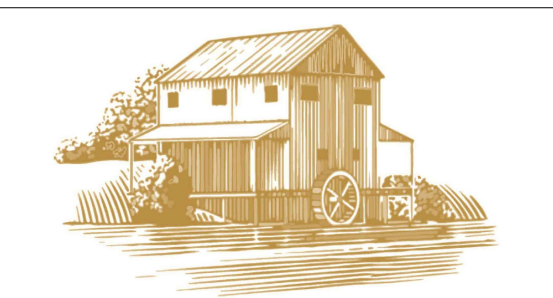
SHEET NUMBER
A-203



1 NORTH ELEVATION
3/16"=1'-0"

- BR-01 BRICK VENEER SB-01 STEEL
- MP-01 MP-02 METAL PANEL GR-01 GRANITE MC-01

2 SHEET NOTES/LEGEND



COLOMA RIVER CAPITAL

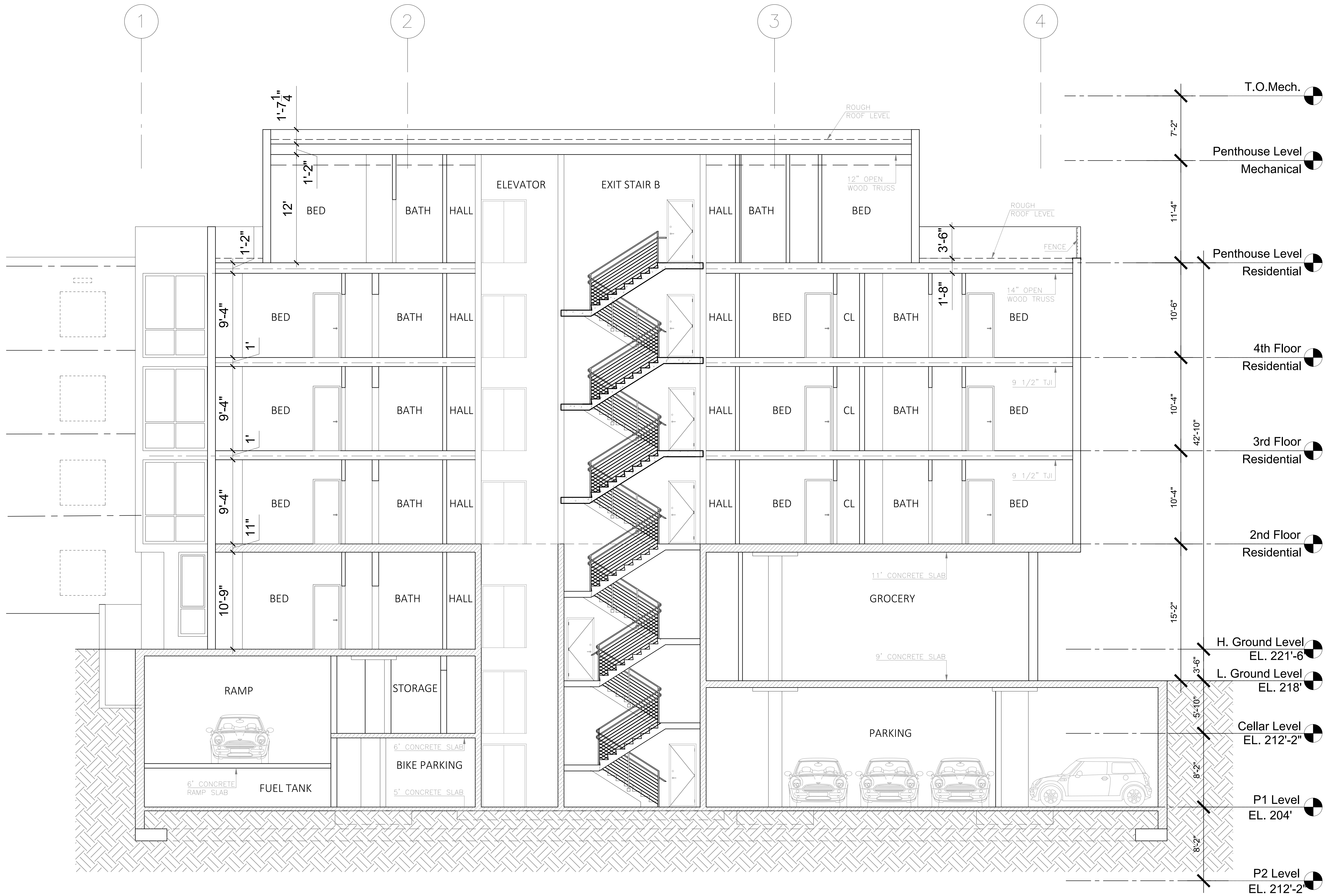
Owner:
Coloma River Capital
Address:
1140 3rd Street NW,
Suite 2151,
Washington, DC 20002
Charles Paret
202-838-6941

71 KENNEDY STR. NW
5505 1st St. NW / 67-71 Kennedy St. NW
Washington, DC 20011
PROJECT MANAGER: PENG WANG

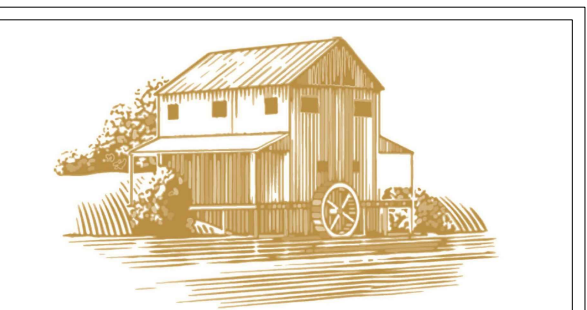
SCALE: 3/16"=1'-0"
DATE:
PROJECT NUMBER:

SHEET TITLE
North Elevation

SHEET NUMBER
A-204



1 North-South Section
3/16"=1'-0"



COLOMA RIVER CAPITAL

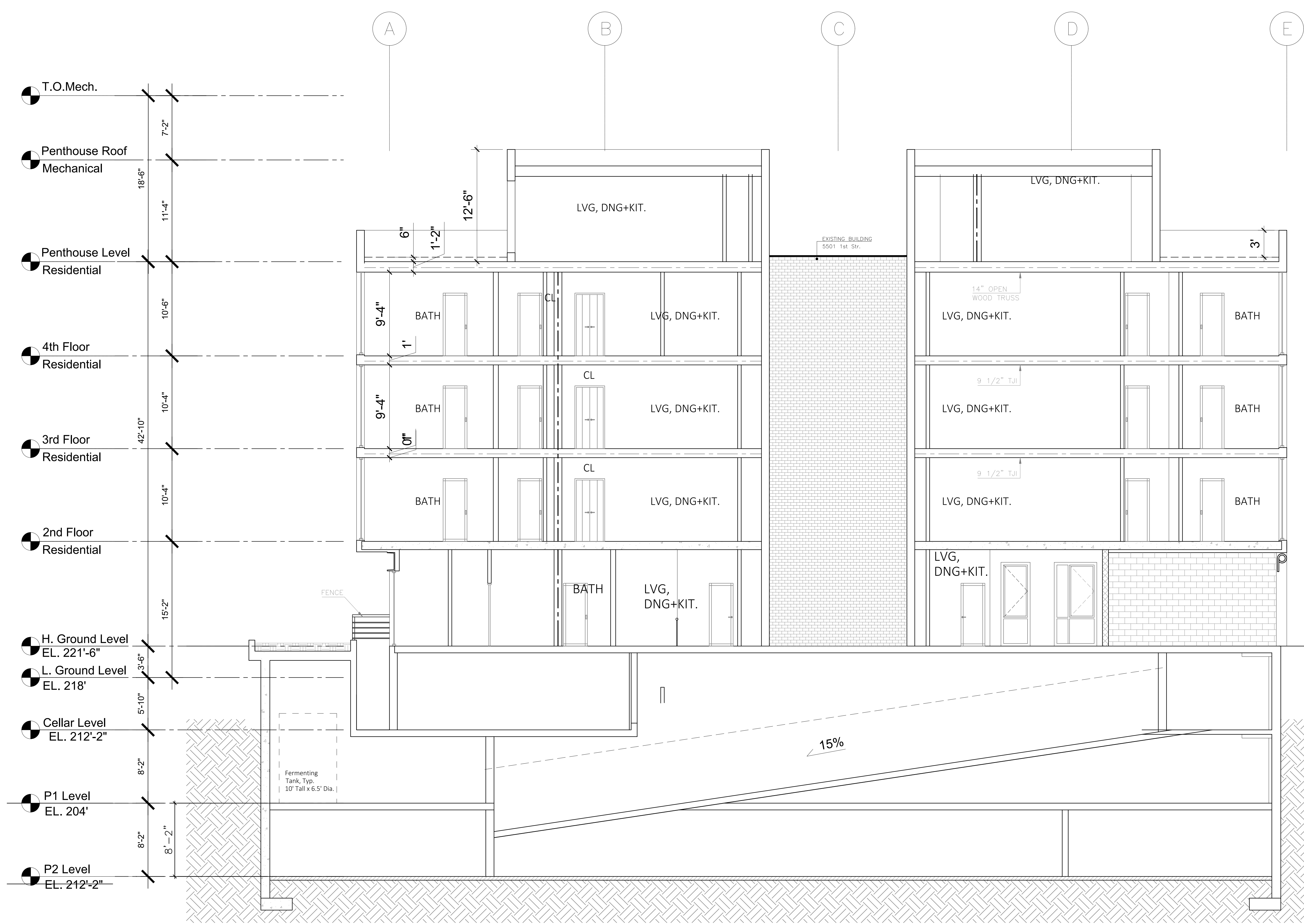
Owner:
Coloma River Capital
Address:
1140 3rd Street NW,
Suite 2151,
Washington, DC 20002
Charles Paret
202-838-6941

71 KENNEDY STR. NW
5505 1st St. NW / 67-71 Kennedy St. NW
Washington, DC 20011
PROJECT MANAGER: PENG WANG

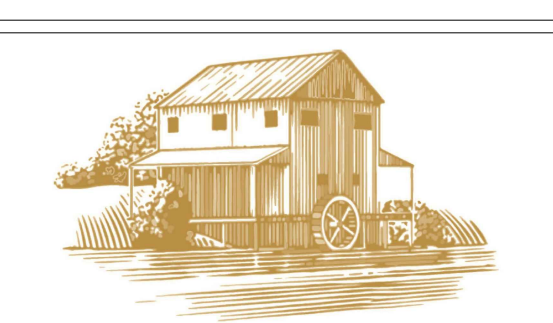
SCALE: 3/16"=1'-0"
DATE:
PROJECT NUMBER:

SHEET TITLE
N-S Section

SHEET NUMBER
A-300A



1 East-West Section
3/16"=1'-0"



COLOMA RIVER CAPITAL

Owner:
Coloma River Capital
Address:
1140 3rd Street NW,
Suite 2151,
Washington, DC 20002
Charles Paret
202-838-6941

71 KENNEDY STR. NW
5505 1st St. NW / 67-71 Kennedy St. NW
Washington, DC 20011
PROJECT MANAGER: PENG WANG

SCALE: 3/16"=1'-0"
DATE:
PROJECT NUMBER:

SHEET TITLE
E-W Section

SHEET NUMBER
A-300B