

RA-1

Sq. 1820

4 Sq. 1819

Sq. 1819

Sq. 1818

Sq. 1920

NC-1

Sq. 1920

RA-2

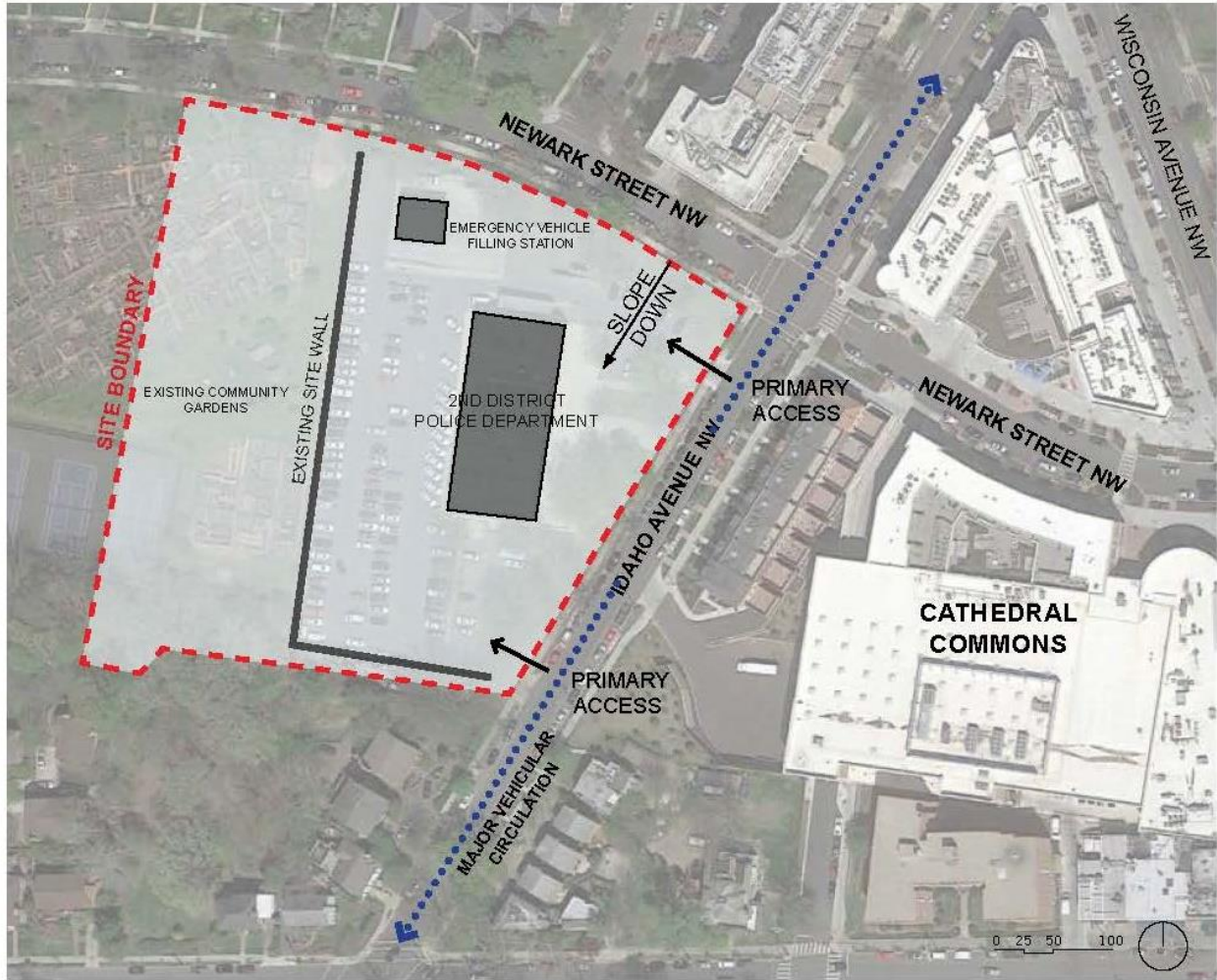
Sq. 1817

Sq. 1801

Sq. 1817

Sq. 1920

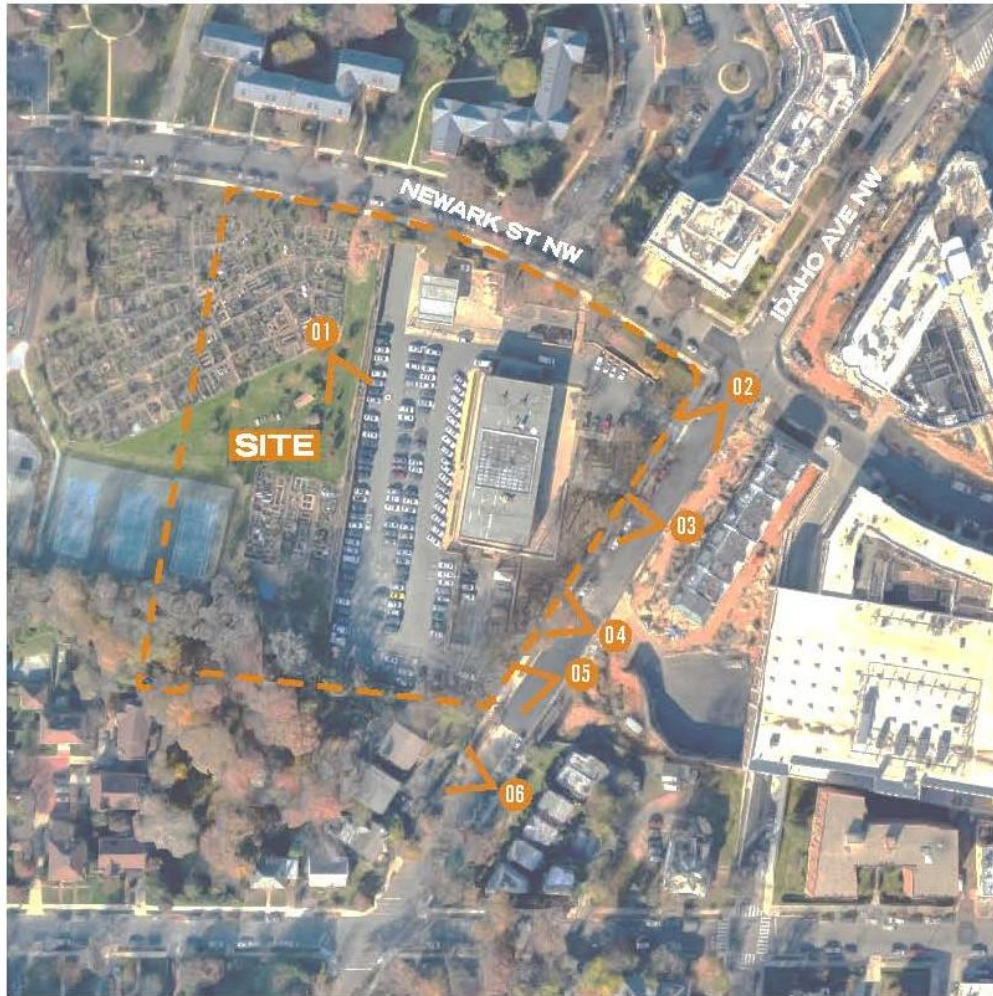
Board of Zoning Adjustment  
District of Columbia  
CASE NO. 19877  
EXHIBIT NO. 4



LOCATION: 3320 IDAHO AVE NW  
 SQUARE: 1818  
 LOT: 849  
 ZONE: RA-1  
 SITE AREA: 200,965 SQFT







01 SITE FROM COMMUNITY GARDENS



02 SOUTH DOWN IDAHO AVE NW



03 2D MUNICIPAL POLICE DEPARTMENT



04 SITE ACROSS FROM IDAHO AVE NW



05 SITE ACROSS DOWN IDAHO AVE NW



06 NEIGHBORING BUILDINGS



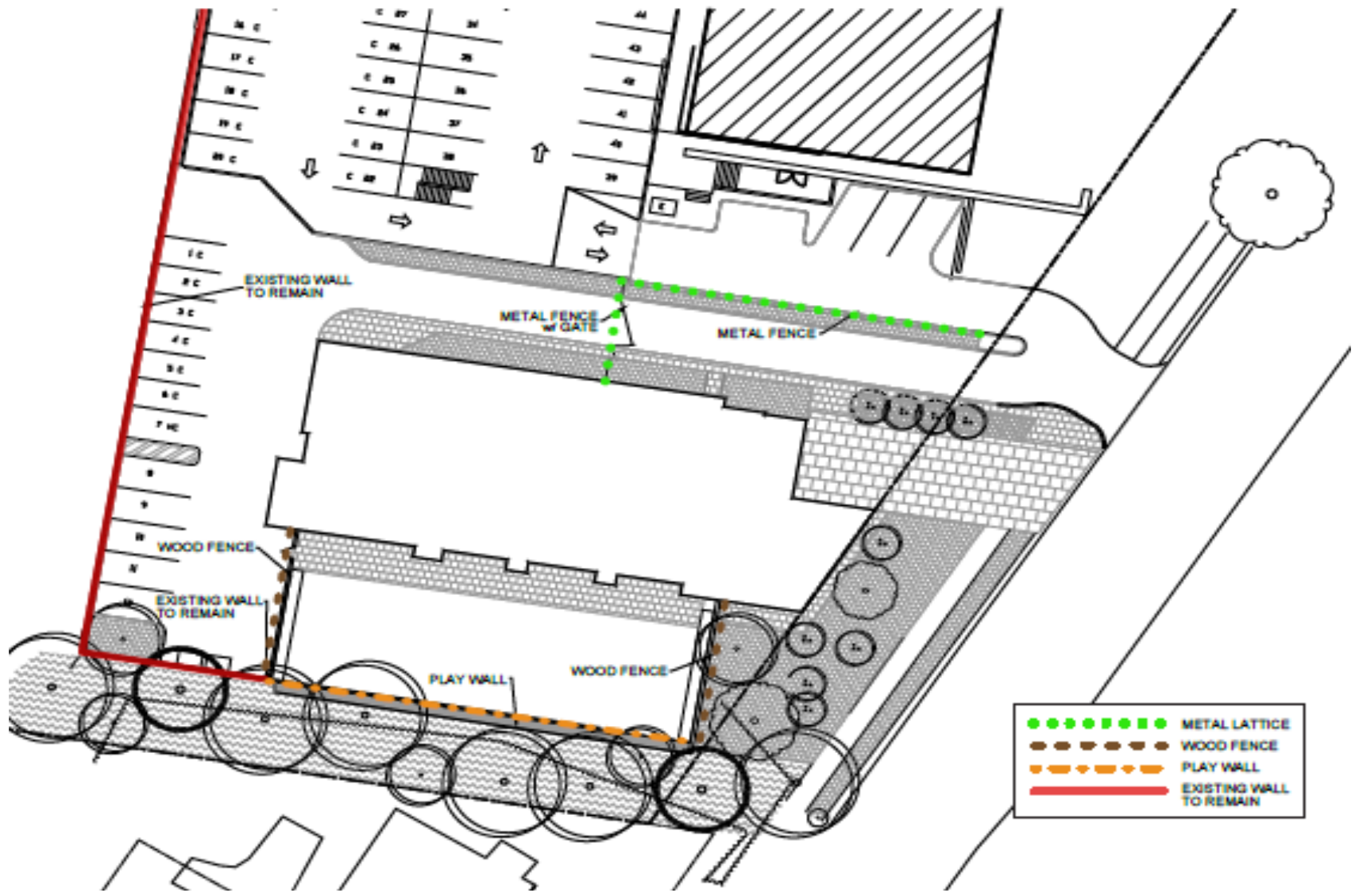




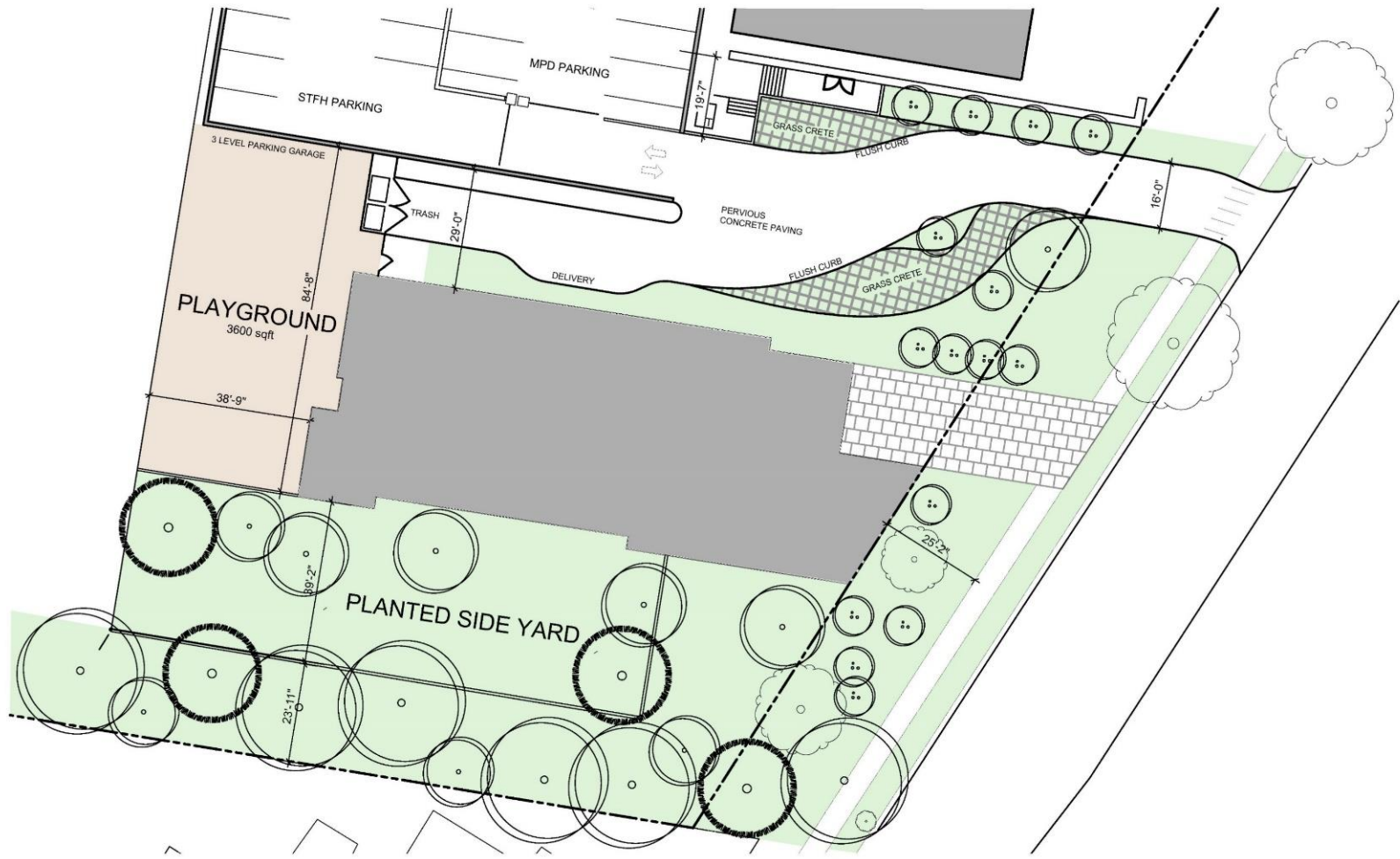
EXISTING SITE

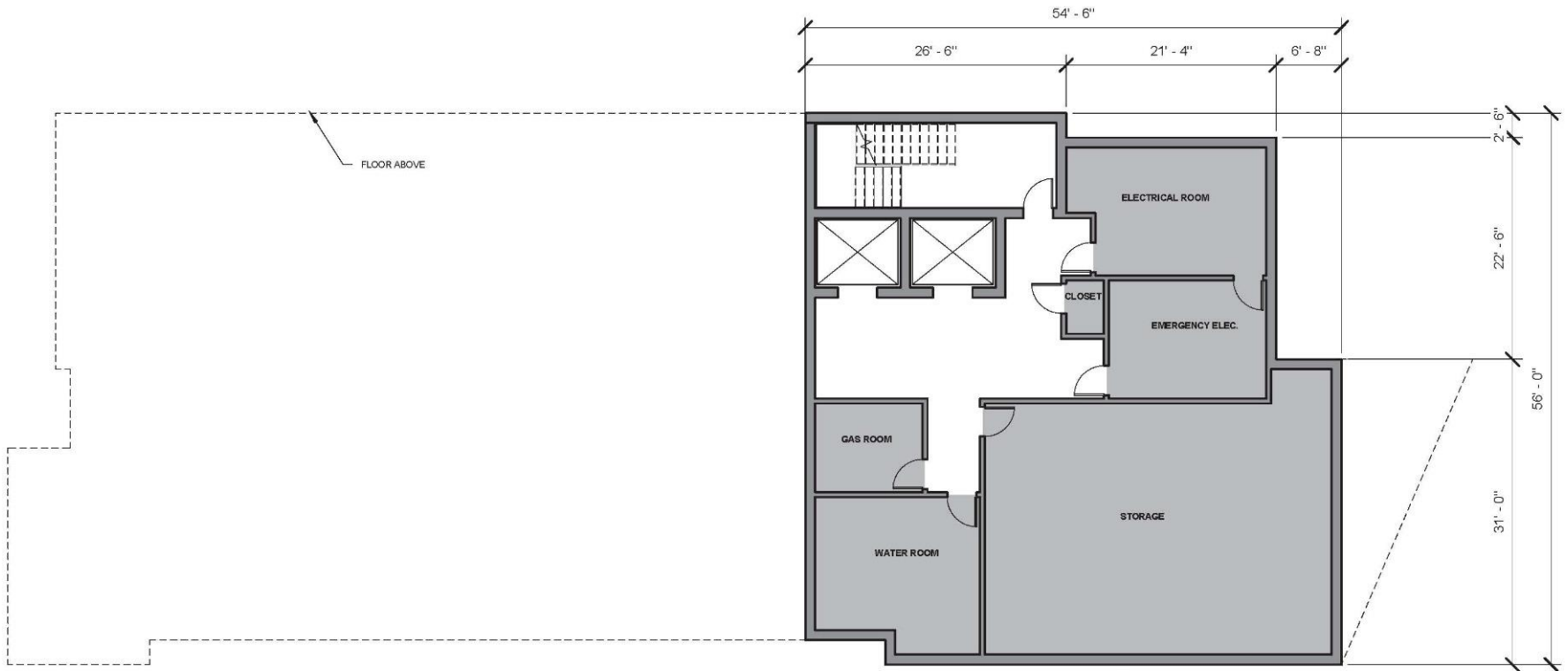


PROPOSED SITE

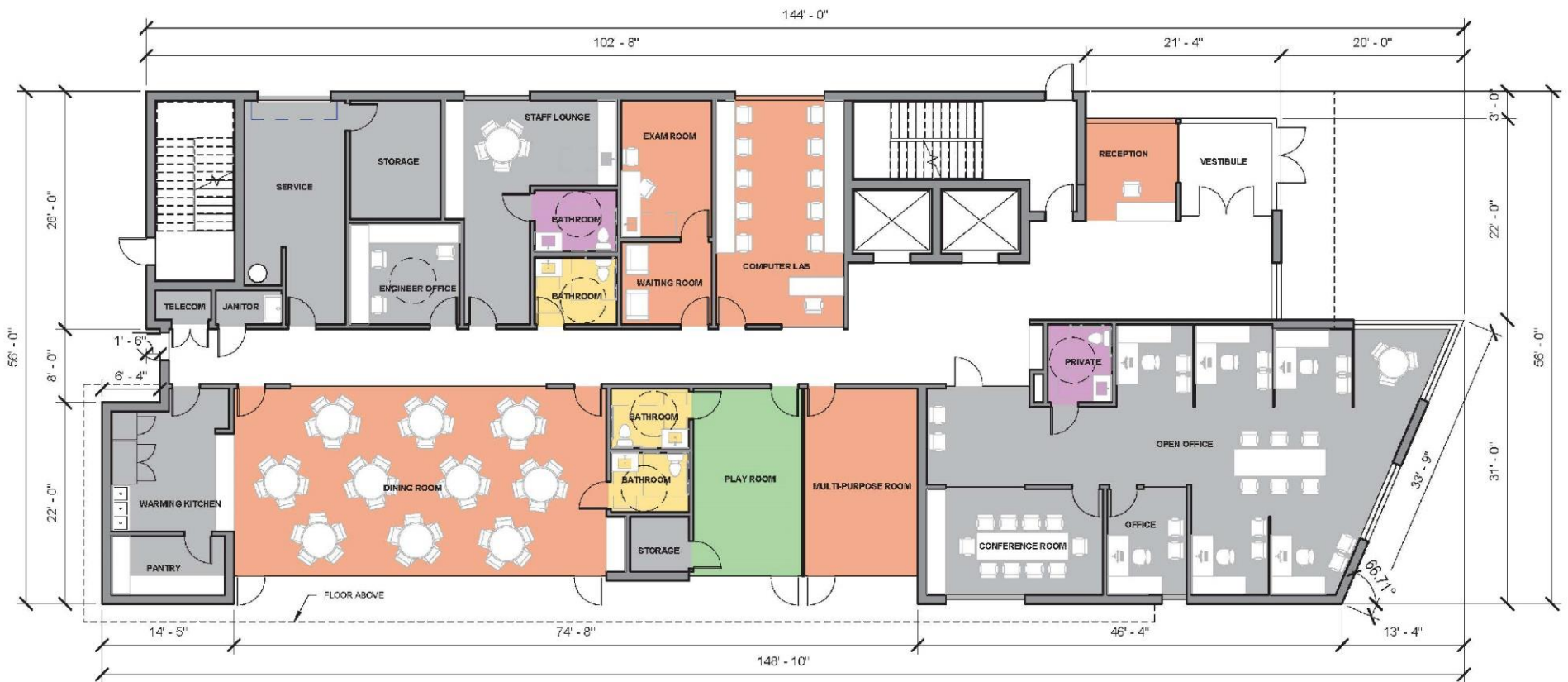










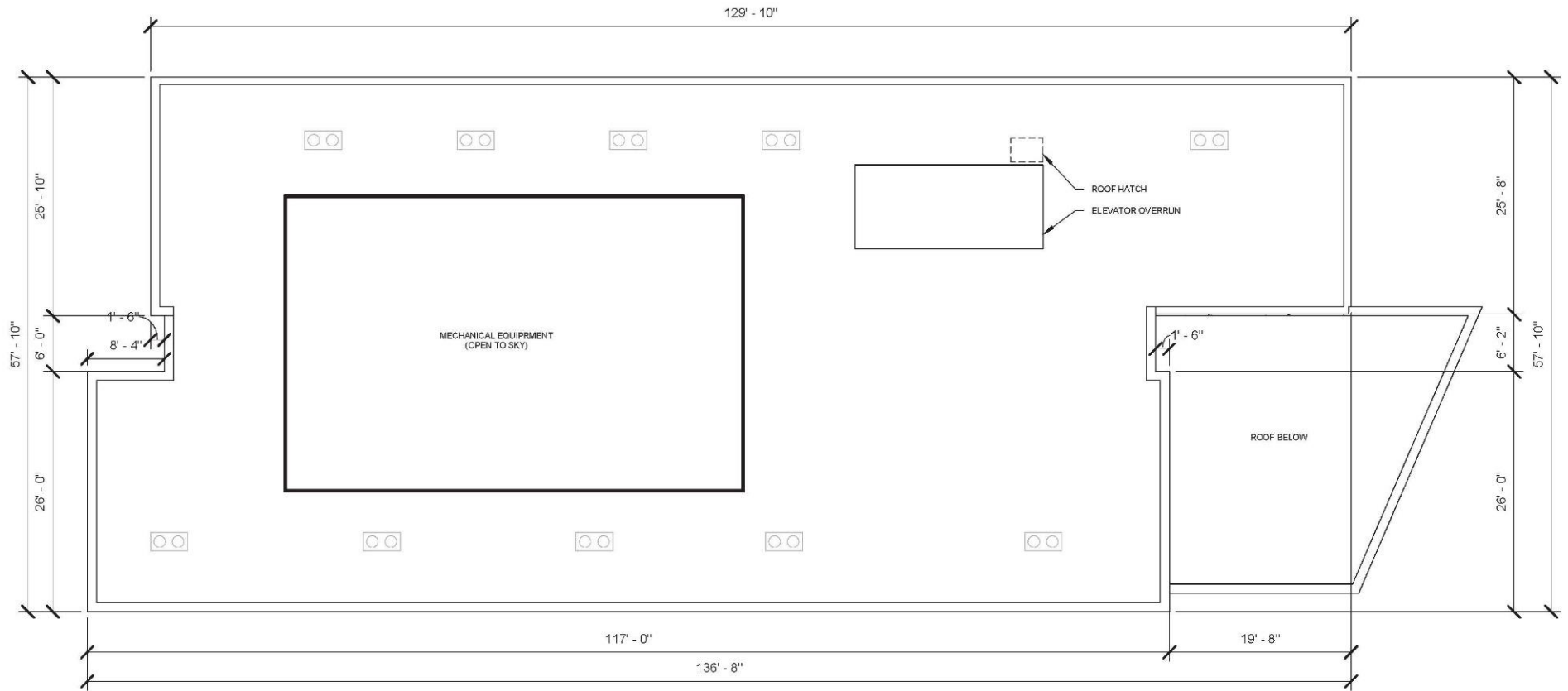


- COMMON SPACES
- ADMIN SPACES
- PLAY SPACES
- RESIDENT UNITS
- FAMILY BATHROOMS
- PRIVATE BATHROOMS



- COMMON SPACES
- ADMIN SPACES
- PLAY SPACES
- RESIDENT UNITS
- FAMILY BATHROOMS
- PRIVATE BATHROOMS













T.O.P.  
+69' - 0"

ROOF  
+66' - 8"

6th FLOOR  
+56' - 0"

5th FLOOR  
+45' - 4"

4th FLOOR  
+34' - 8"

3rd FLOOR  
+24' - 0"

2nd FLOOR  
+13' - 4"

1st FLOOR  
+0' - 0"





TERRACOTTA

MECHANICAL  
SCREEN

CURTAIN WALL

T.O.P.  
+69'-0"

ROOF  
+66'-8"

CURTAIN WALL

6th FLOOR  
+56'-0"

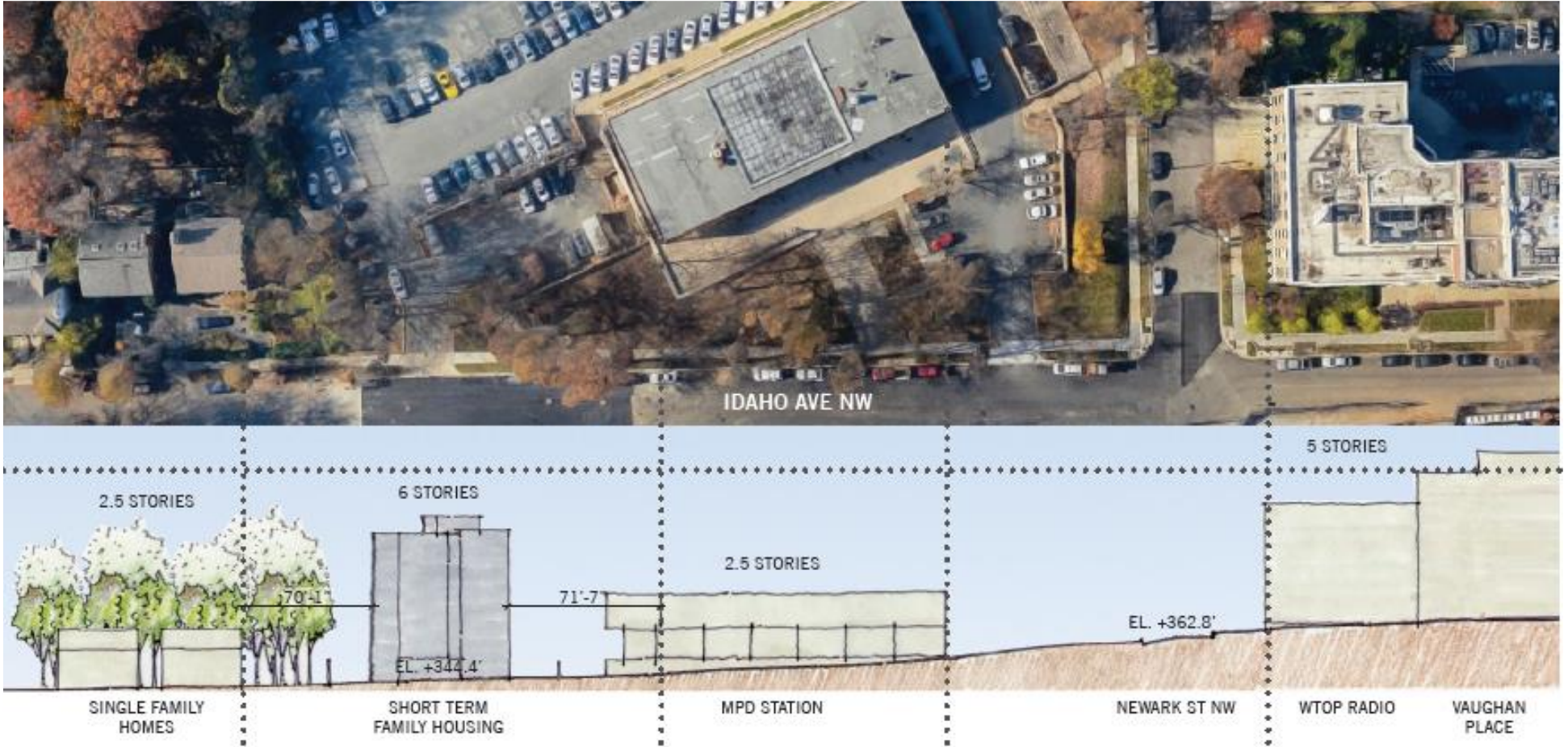
5th FLOOR  
+45'-4"

4th FLOOR  
+34'-8"

3rd FLOOR  
+24'-0"

2nd FLOOR  
+13'-4"

1st FLOOR  
+0'-0"







SPRING / FALL EQUINOX 9 AM



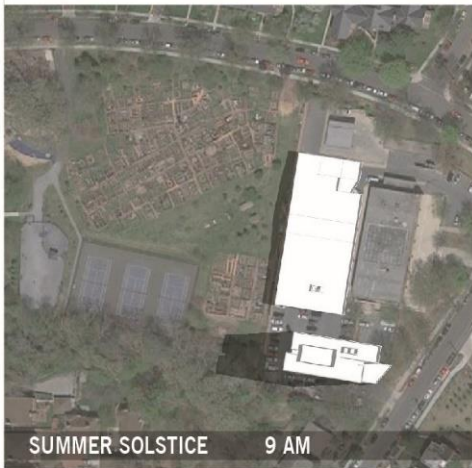
1030 AM



12 PM



3 PM



SUMMER SOLSTICE 9 AM



1030 AM



12 PM



3 PM











