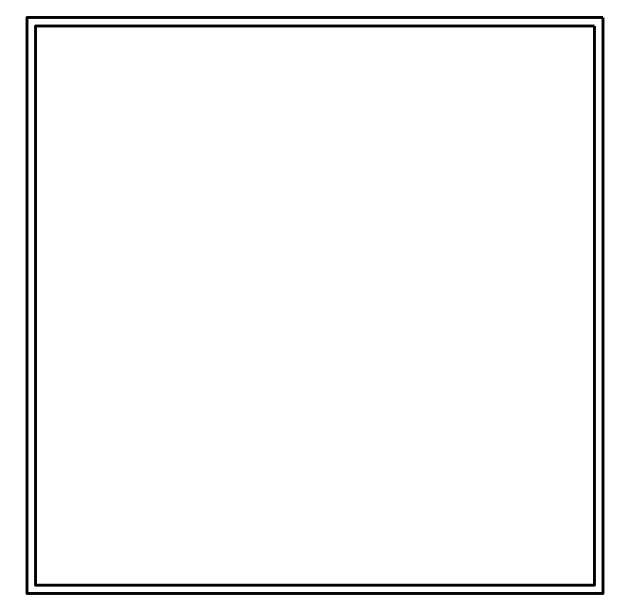


1 EXISTING SITE PLAN
 SCALE: 3/16" = 1'-0" 24X36 LAYOUT

AFAJSTUDIOS
 architecture • design • construction management
 P.O. BOX 220, 2437
 C. 312.564.6697
 info@afa-studios.com
 afa@afa-studios.com
 1734 20th Street, NW WASH DC 20009

4526 13th STREET, NW
 4526 13TH STREET, NW
 WASHINGTON, DC 20011
 SQ: 2817 LOT: 0036

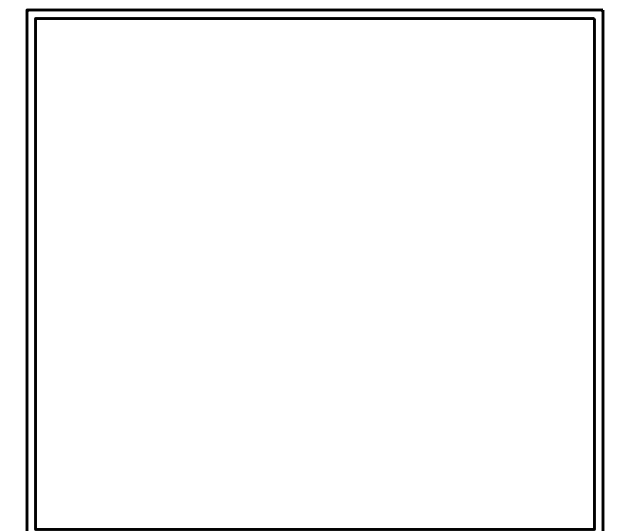
SCALE: AS NOTED
 DATE: 05/14/2018
 PROJECT NUMBER: 4526



A0100



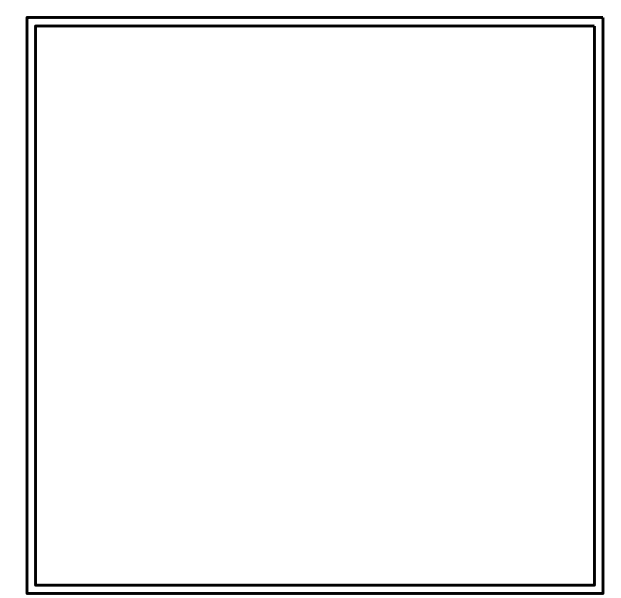
1 1ST FLOOR PLAN
 SCALE: 1/4" = 1'-0" 24X36 LAYOUT



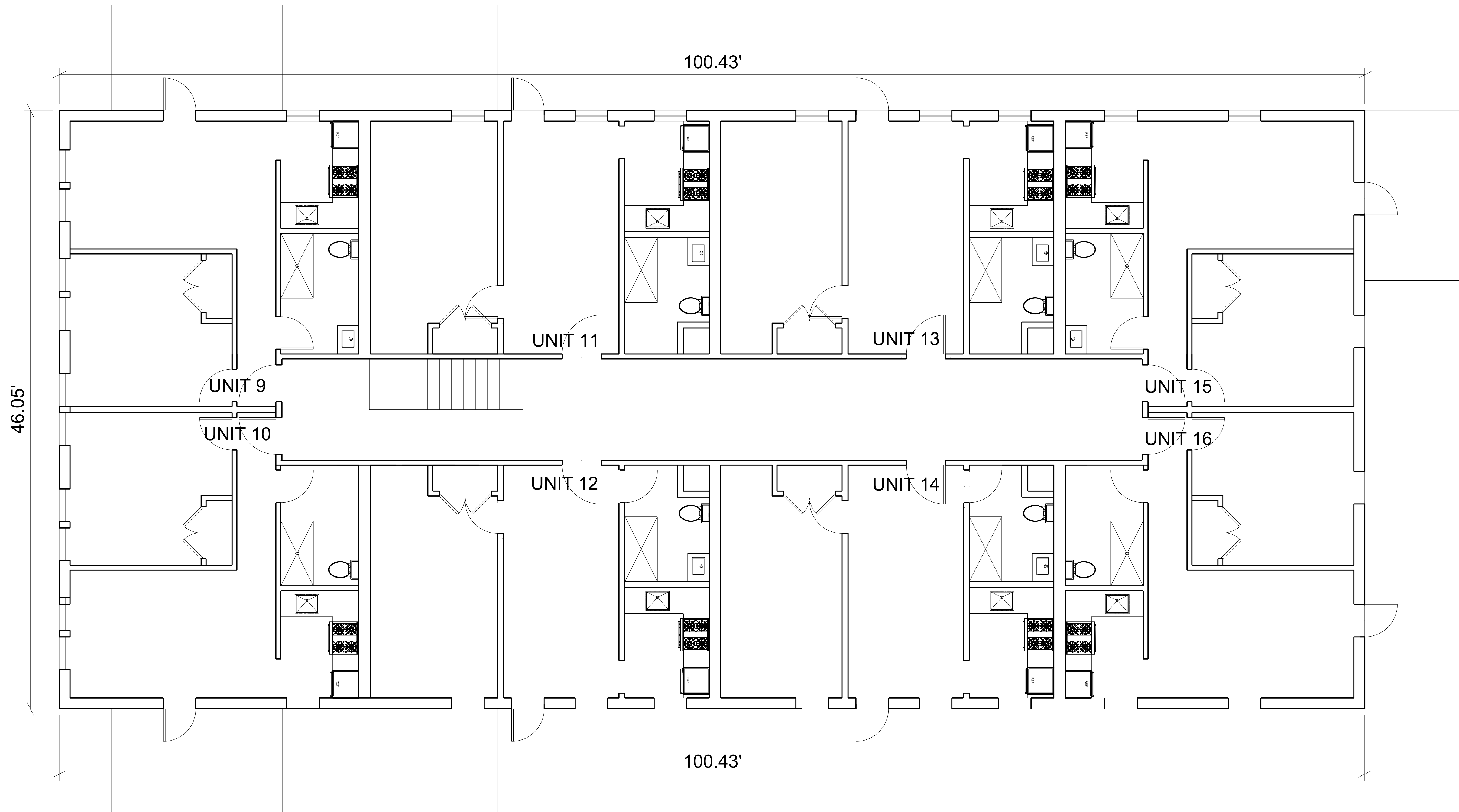
AFA|STUDIOS
 architecture - design - construction management
 P. 202.320.2437
 C. 312.664.6661
 info@afa-studios.com
 www.afa-studios.com
 1734 20th Street, NW Washington, DC 20009

4526 13th STREET, NW
 4526 13TH STREET, NW
 WASHINGTON, DC 20011
 SQ: 2817 LOT: 0036

SCALE: AS NOTED
 DATE: 05/14/2018
 PROJECT NUMBER: 4526



A0101



46.05'

100.43'

100.43'

UNIT 9
UNIT 10

UNIT 11

UNIT 13

UNIT 15
UNIT 16

UNIT 12

UNIT 14

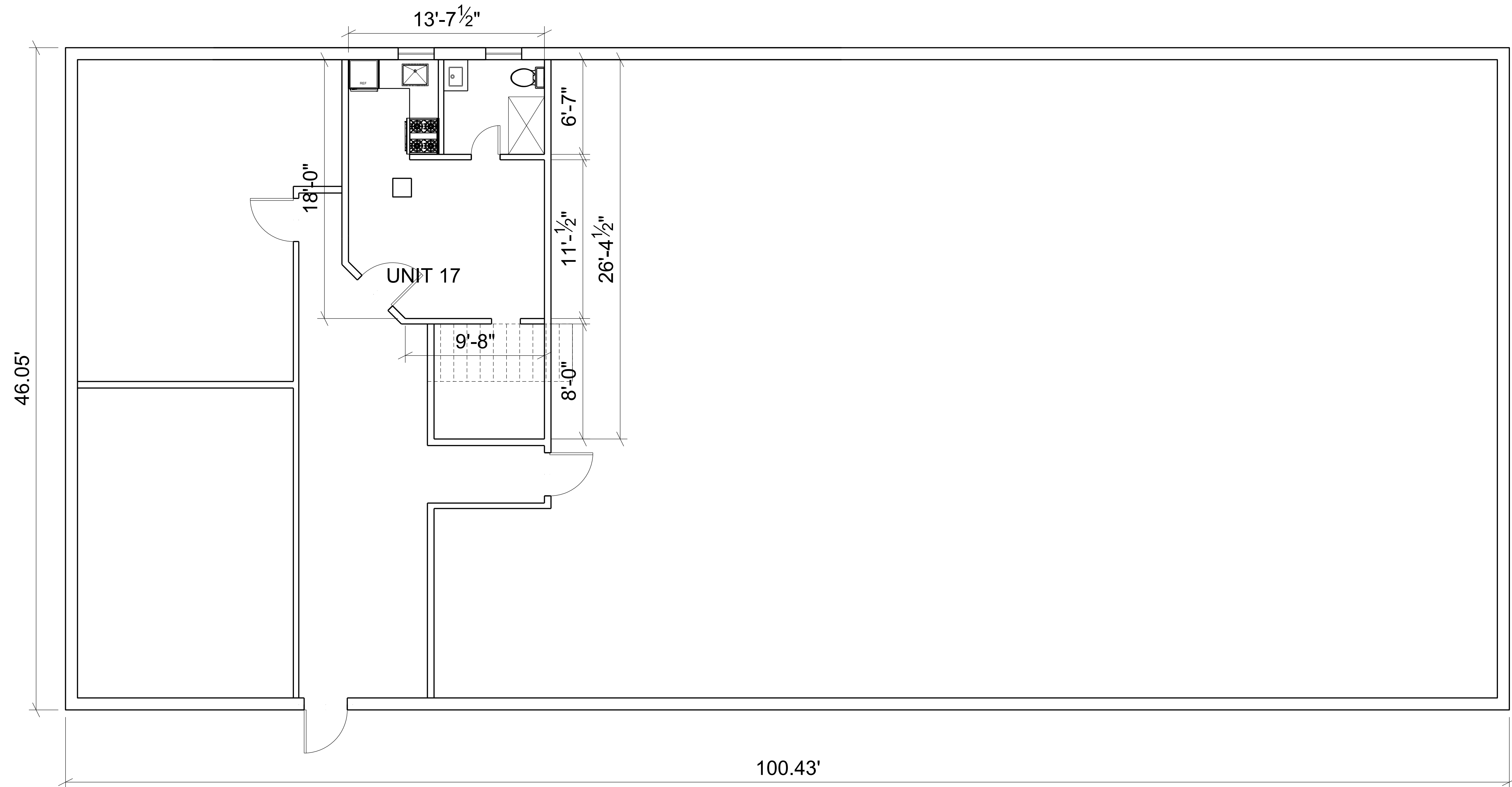
1 2ND FLOOR PLAN
SCALE: 1/4" = 1'-0" 24X36 LAYOUT

AFA|STUDIOS
 architecture - design - construction management
 P. 202.320.2437
 C. 312.664.6661
 info@afa-studios.com
 afa-studios.com
 1734 20th Street, NW Washington, DC 20009

4526 13th STREET, NW
 4526 13TH STREET, NW
 WASHINGTON, DC 20011
 SQ: 2817 LOT: 0036

SCALE: AS NOTED
 DATE: 05/14/2018
 PROJECT NUMBER: 4526

A0102

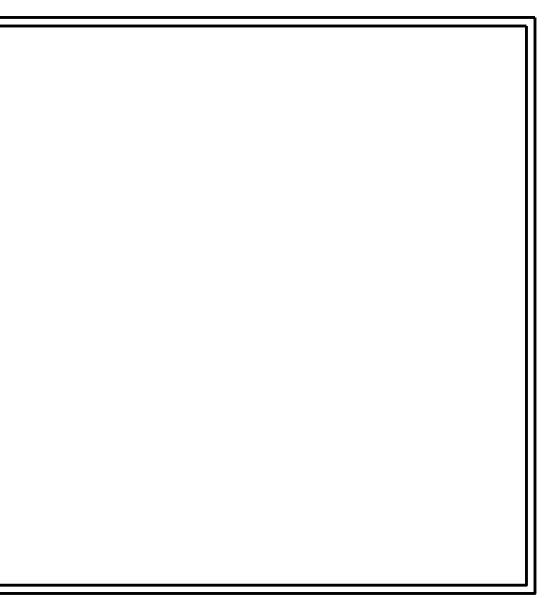


1 CELLAR FLOOR PLAN
 SCALE: 1/4" = 1'-0" 24X36 LAYOUT

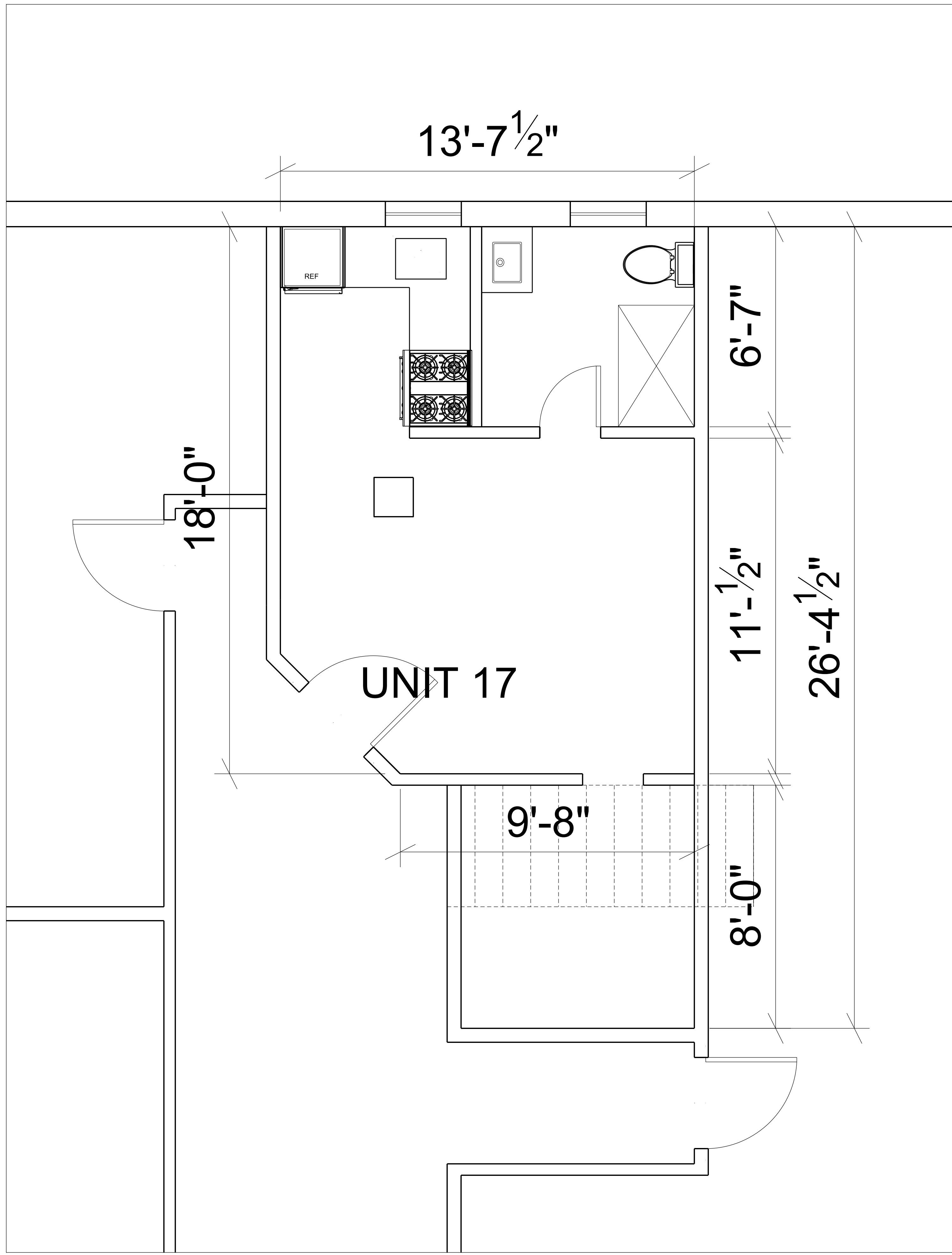
AFA|STUDIOS
 architecture - design - construction management
 P. 202.320.2437
 C. 312.664.6661
 info@afa-studios.com
 www.afa-studios.com
 1734 20th Street, NW Washington, DC 20009

4526 13th STREET, NW
 4526 13TH STREET, NW
 WASHINGTON, DC 20011
 SQ: 2817 LOT: 0036

SCALE:	AS NOTED
DATE:	05/14/2018
PROJECT NUMBER:	4526



A0103



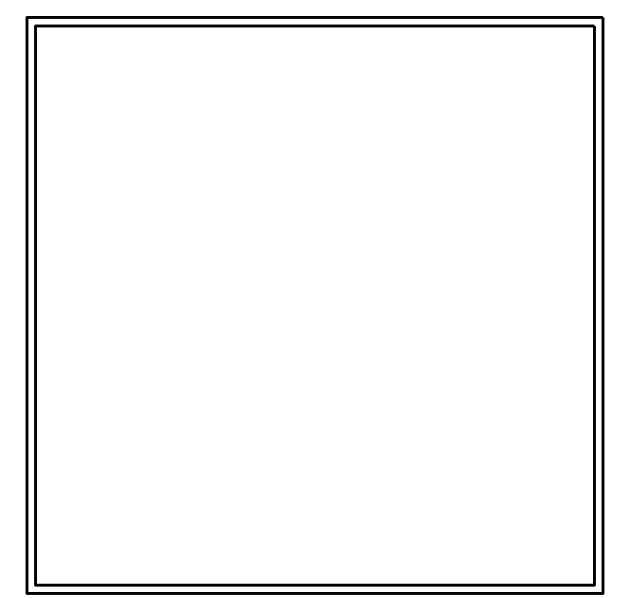
1 CELLAR FLOOR PLAN - UNIT 17
 SCALE: 1/2" = 1'-0" 24X36 LAYOUT



AFAJSTUDIOS
 architecture - design - construction management
 p. 202.320.2437
 c. 312.664.6661
 info@afa-studios.com
 afa-studios.com
 1734 20th street, nw wa/dc 20009

4526 13th STREET, NW
 4526 13TH STREET, NW
 WASHINGTON, DC 20011
 SQ: 2817 LOT: 0036

SCALE: AS NOTED
 DATE: 05/14/2018
 PROJECT NUMBER: 4526



A0104