

Royal Norwegian Embassy Chancery Renovation

DESIGN DEVELOPMENT

U.S. Department of State

Foreign Missions Board of

Zoning Adjustment

25 July, 2018

Project 112351

2720 34th St. NW
Washington, DC 20008
USA



THIS PAGE INTENTIONALLY LEFT BLANK

CONTEXT



Fig. 1.1.1 - Overall area map



Fig. 1.1.2 - Aerial view of Residence & Chancery

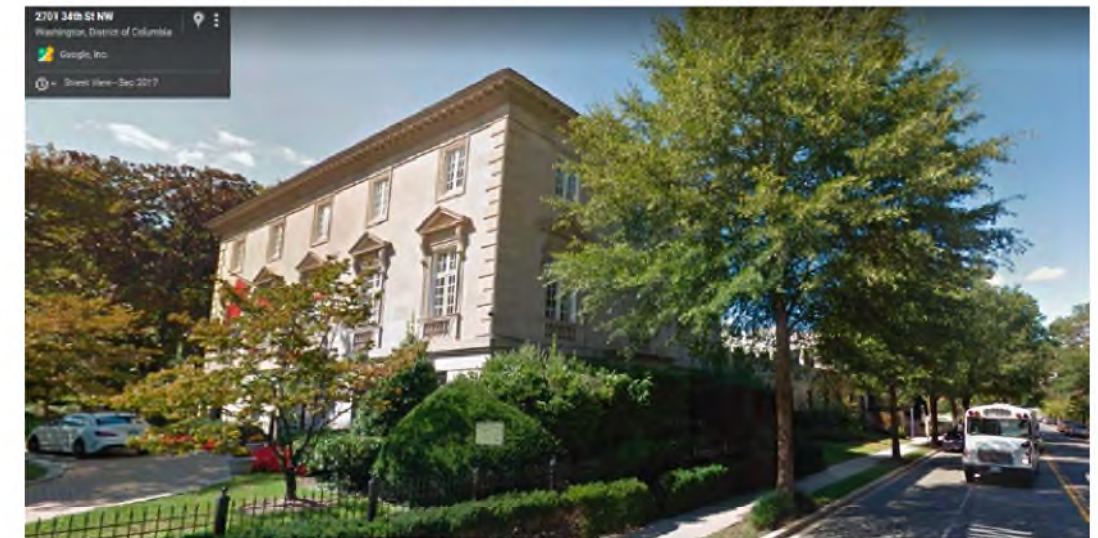


Fig. 1.1.3 - Residence at Massachusetts & 34th Street



Fig. 1.1.4 - Chancery facade along 34th Street

CONTEXT



Fig. 1.1.5 - Aerial view of Residence & Chancery



Fig. 1.1.6 - View traveling east on 34th Street

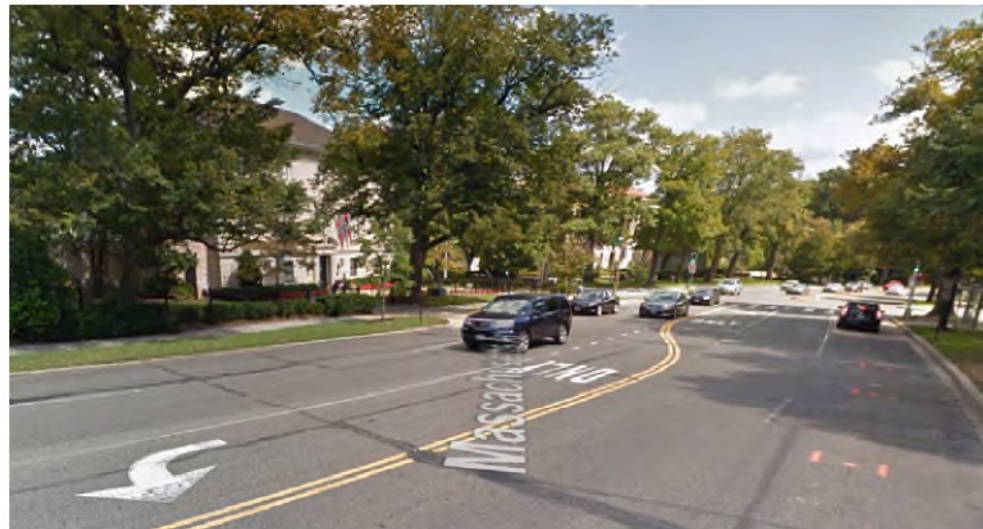


Fig. 1.1.7 - View traveling south on Massachusetts Avenue.



Fig. 1.1.8 - View traveling north on Massachusetts Avenue.



Fig. 1.1.9 - View traveling west on 34th Street.

CONTEXT

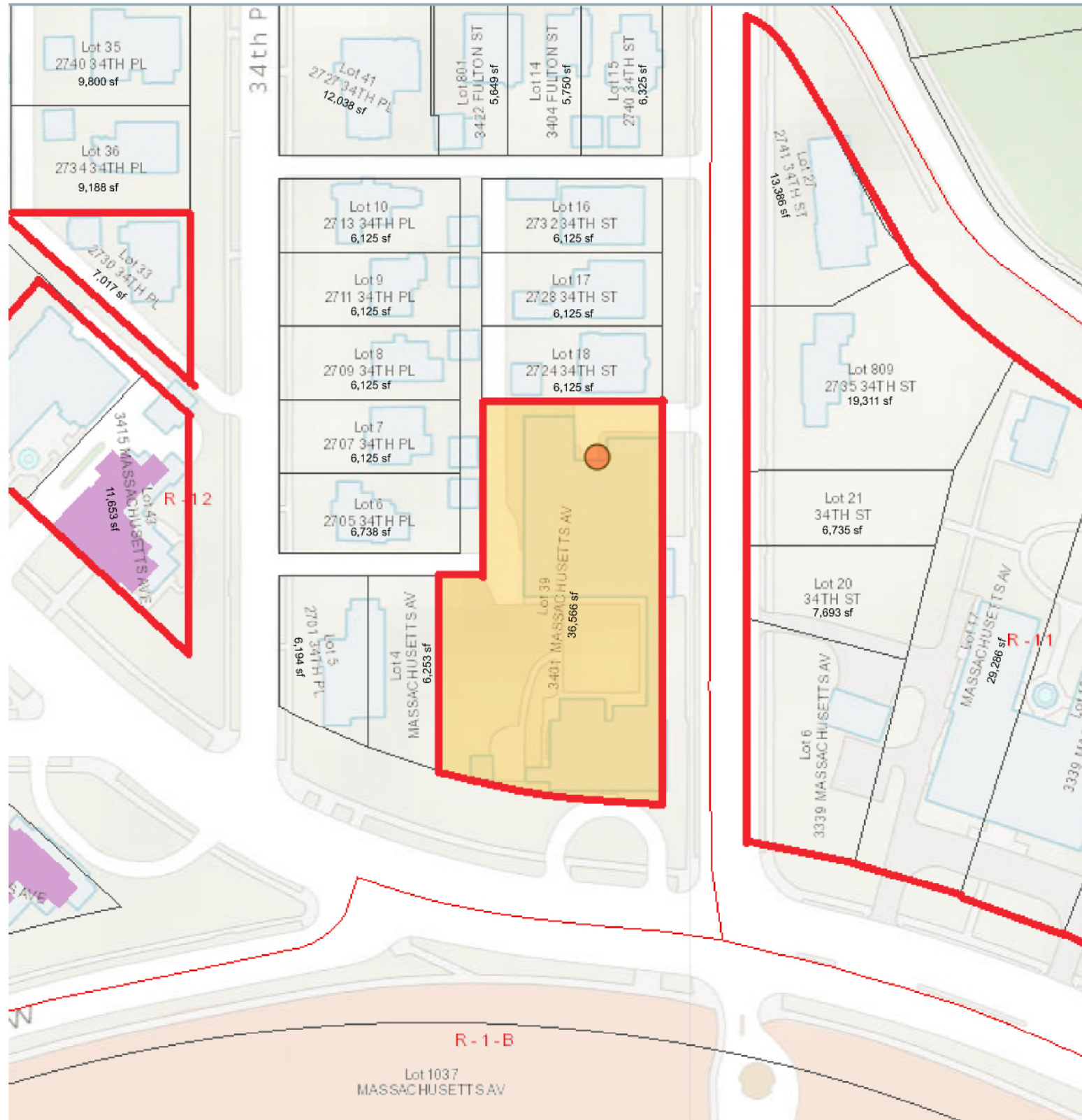
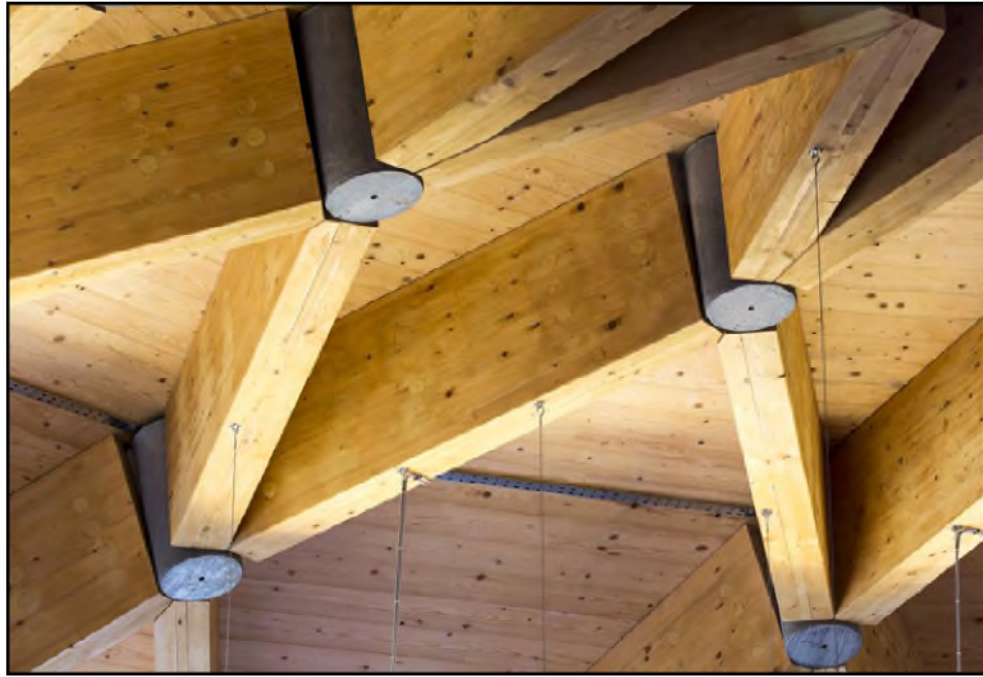


Fig. 1.1.10 - GIS Plat and Surrounding Lots

Study of Residential and Non-Residential Uses with Area of Norwegian Chancery/Embassy (excluding Naval Observatory)

Property	Square	Lot	Use	Square Footage	% of total	Note:
2740 34th Place NW	1939	35	Residential	9800	3.3%	
2734 34th Place NW	1939	36	Residential	9188	3.1%	
2730 34th Place NW	1939	33	Diplomatic	7017	2.3%	(Nepal)
3415 Massachusetts Ave NW	1939	43	Diplomatic	11653	3.9%	(Cape Verde)
3417 Massachusetts Ave NW	1939	42	Religious	11485	3.8%	(Soka Gakkai)
2727 34th Place NW	1939	41	Residential	12038	4.0%	
2713 34th Place NW	1939	10	Residential	6125	2.0%	
2711 34th Place NW	1939	9	Residential	6125	2.0%	
2709 34th Place NW	1939	8	Residential	6125	2.0%	
2707 34th Place NW	1939	7	Residential	6125	2.0%	
2705 34th Place NW	1939	6	Residential	6738	2.2%	
2701 34th Place NW	1939	4 and 5	Residential	12447	4.1%	2 lots
3401 Massachusetts Ave NW	1939	39	Diplomatic	36566	12.1%	(Norway)
2724 34th Street NW	1939	18	Residential	6125	2.0%	
2728 34th Street NW	1939	17	Residential	6125	2.0%	
2732 34th Street NW	1939	16	Residential	6125	2.0%	
2740 34th Street NW	1939	15	Residential	6325	2.1%	
3404 Fulton Street NW	1939	14	Residential	5750	1.9%	
3422 Fulton Street NW	1939	801	Residential	5649	1.9%	
2741 34th Street NW	2122	27	Diplomatic	13386	4.4%	(Azerbaijan)
2735 34th Street NW	2122	809, 21 and 20	Religious/Diplomatic	33739	11.2%	(Holy See)(also 2 adjacent lots)
3399 Massachusetts Avenue NW	2122	6, 17, 16, and 804	Religious/Diplomatic	76311	25.4%	(Holy See)(also 4 adjacent lots)
Total				300967	100.0%	
Residential Total				110810	36.8%	
Non-residential Total				190157	63.2%	





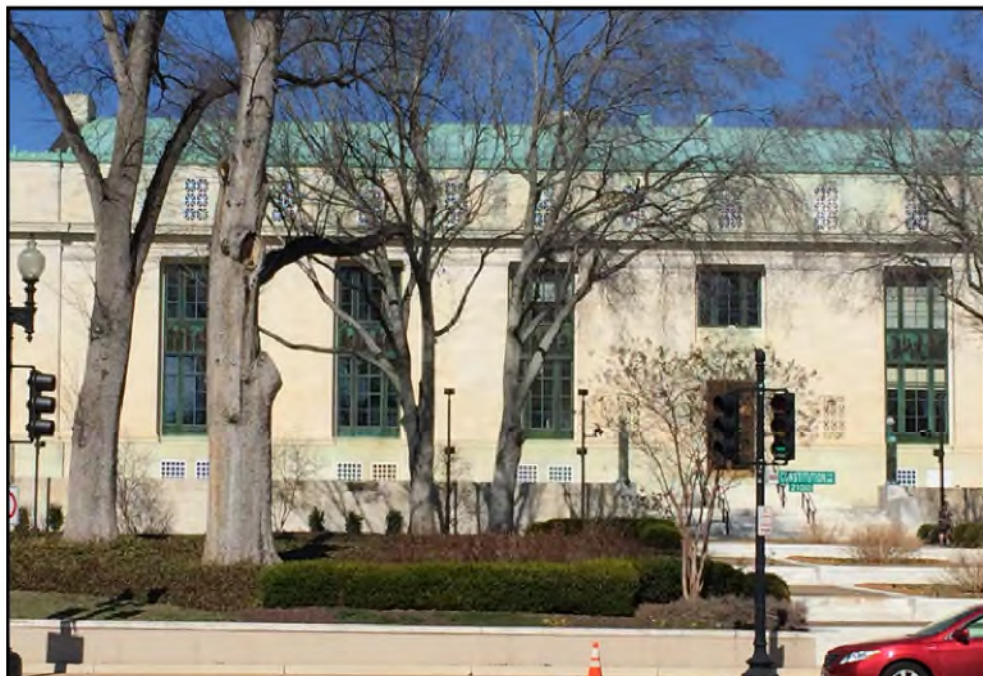
Fig, 1.2.1 - Mass Timber Structure



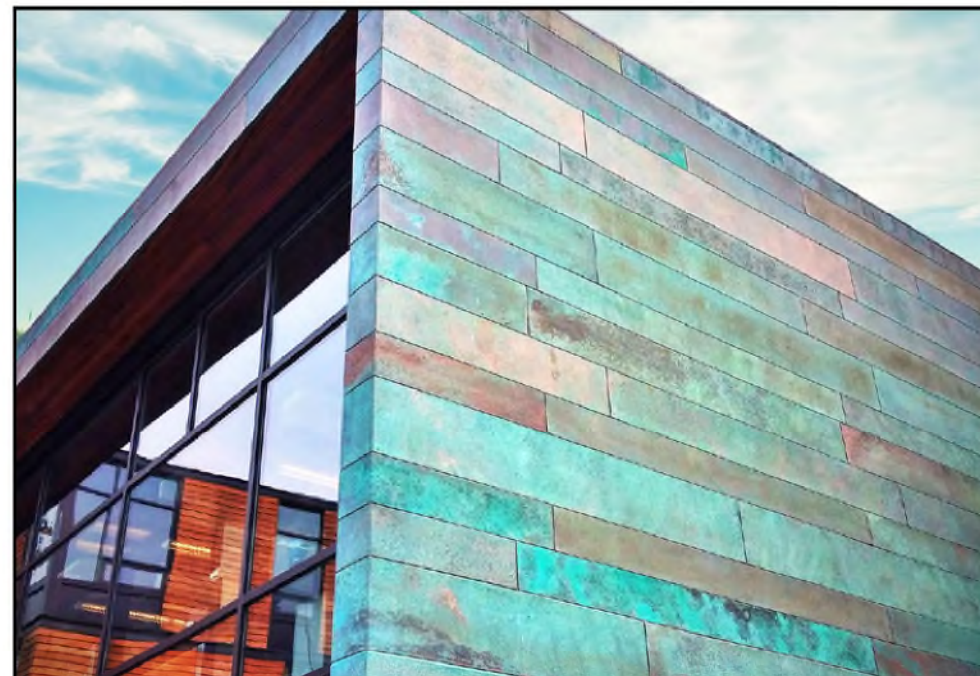
Fig, 1.2.2 - Larvikite Stone Plaza



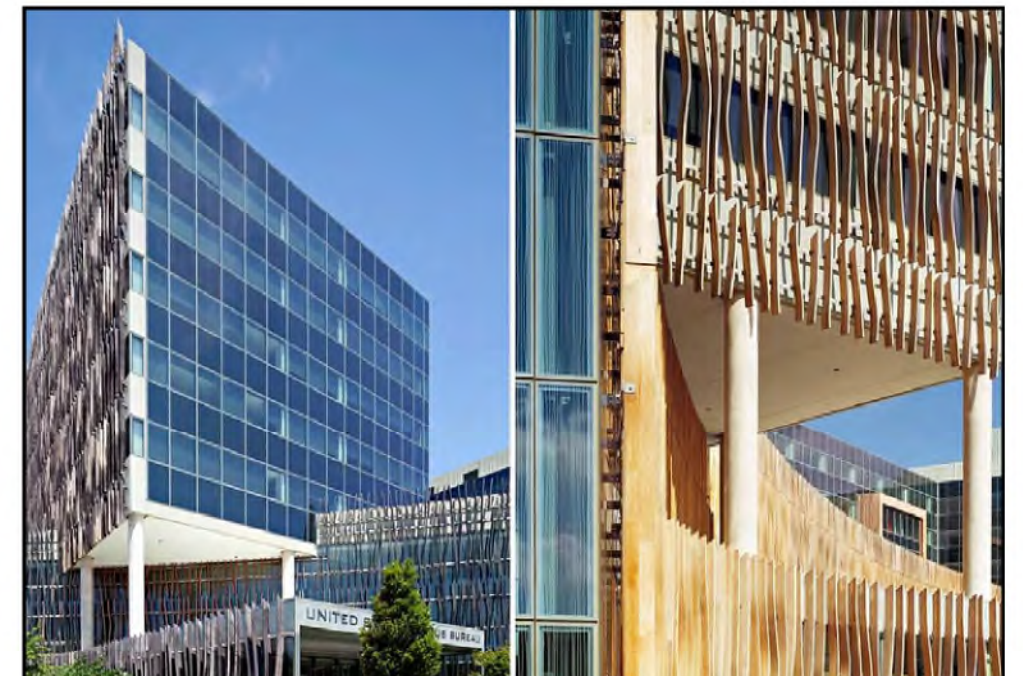
Fig, 1.2.3 - Climbing Vines, NMBU - Ås, Norway



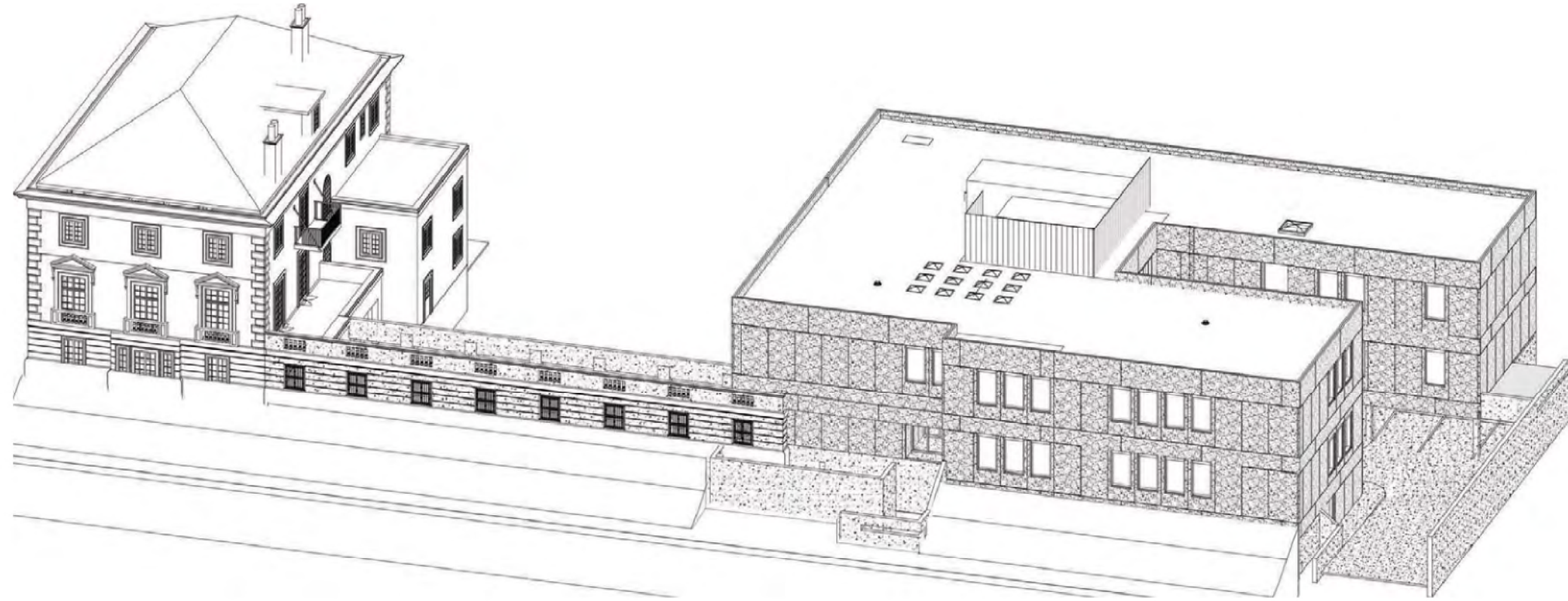
Fig, 1.2.4 - National Academy of Sciences, Washington DC



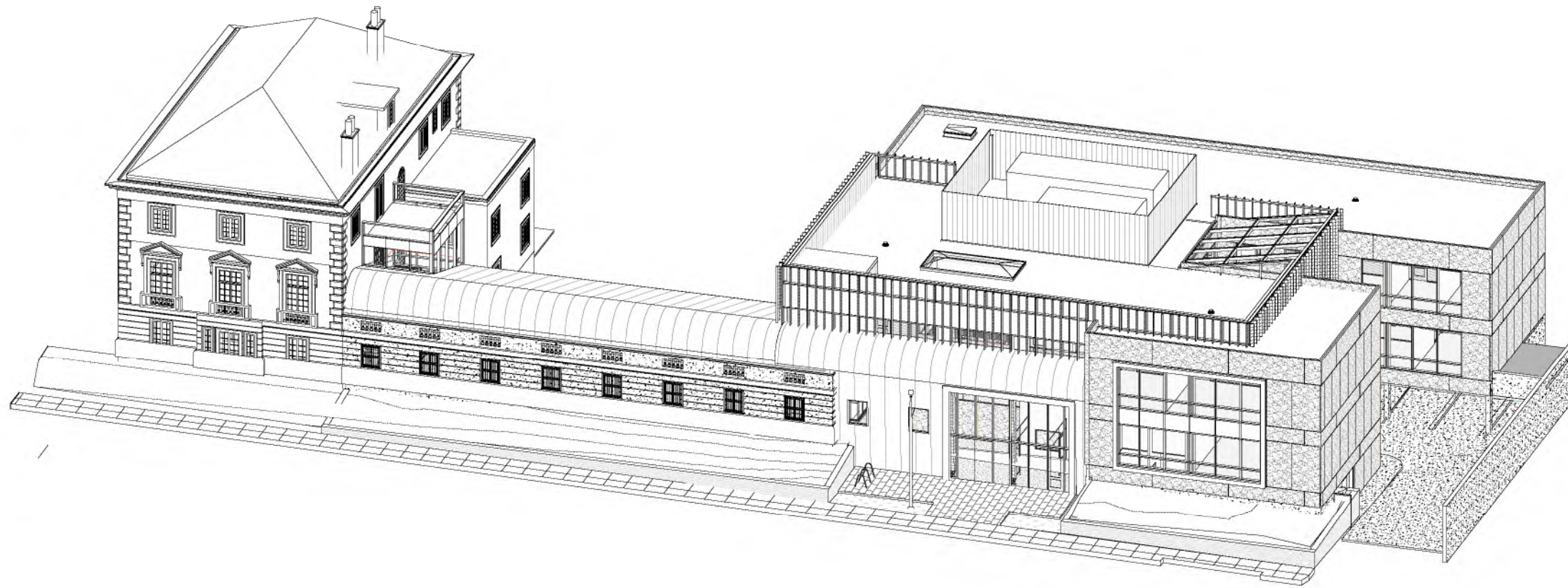
Fig, 1.2.5 - Copper Cladding - Gateway Building - Bainbridge, Washington



Fig, 1.2.6 - US Census Bureau - Suitland, Maryland



Fig, 1.3.1 - Existing Chancery



Fig, 1.3.2 - Proposed Chancery

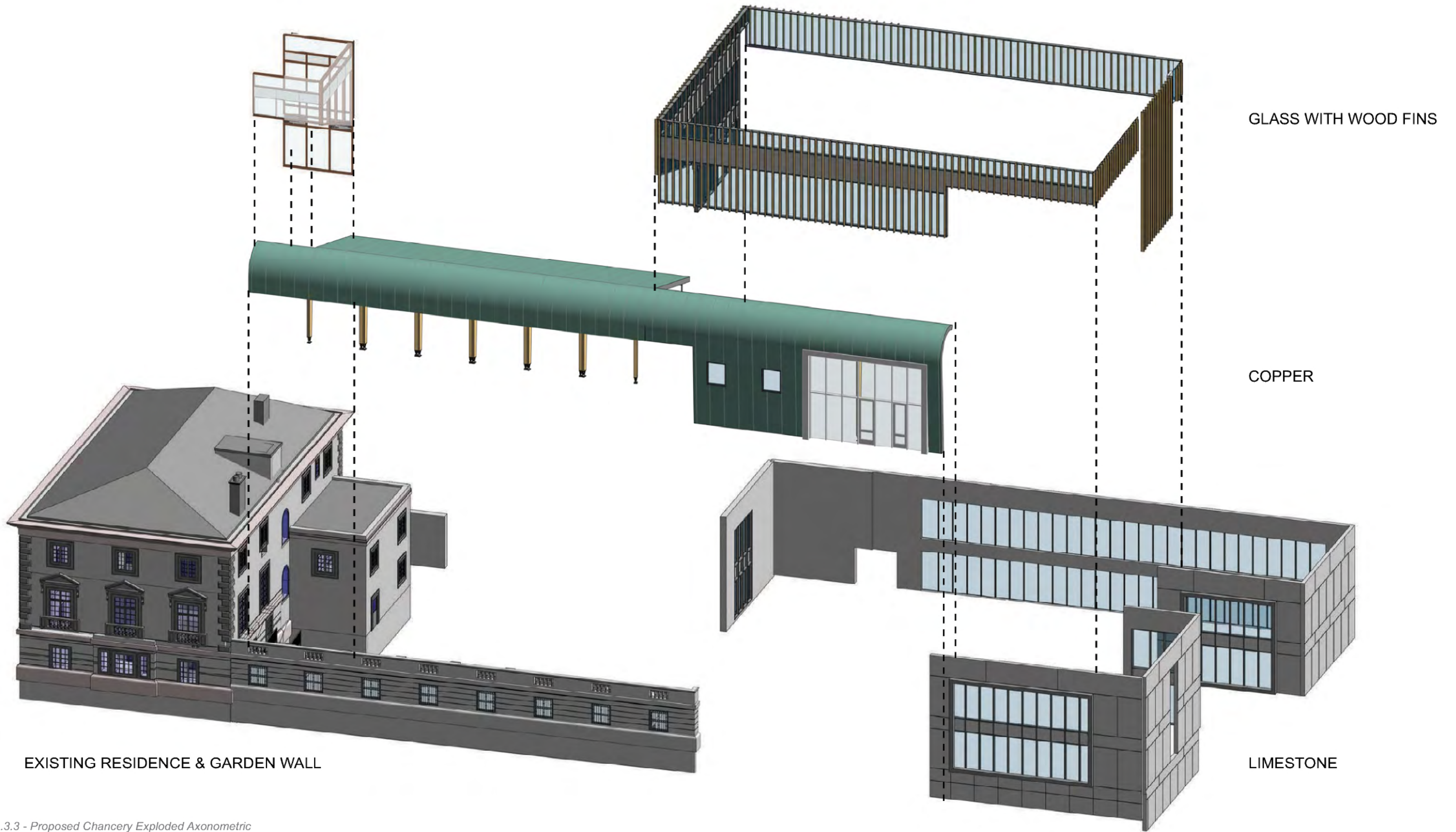


Fig. 1.3.3 - Proposed Chancery Exploded Axonometric

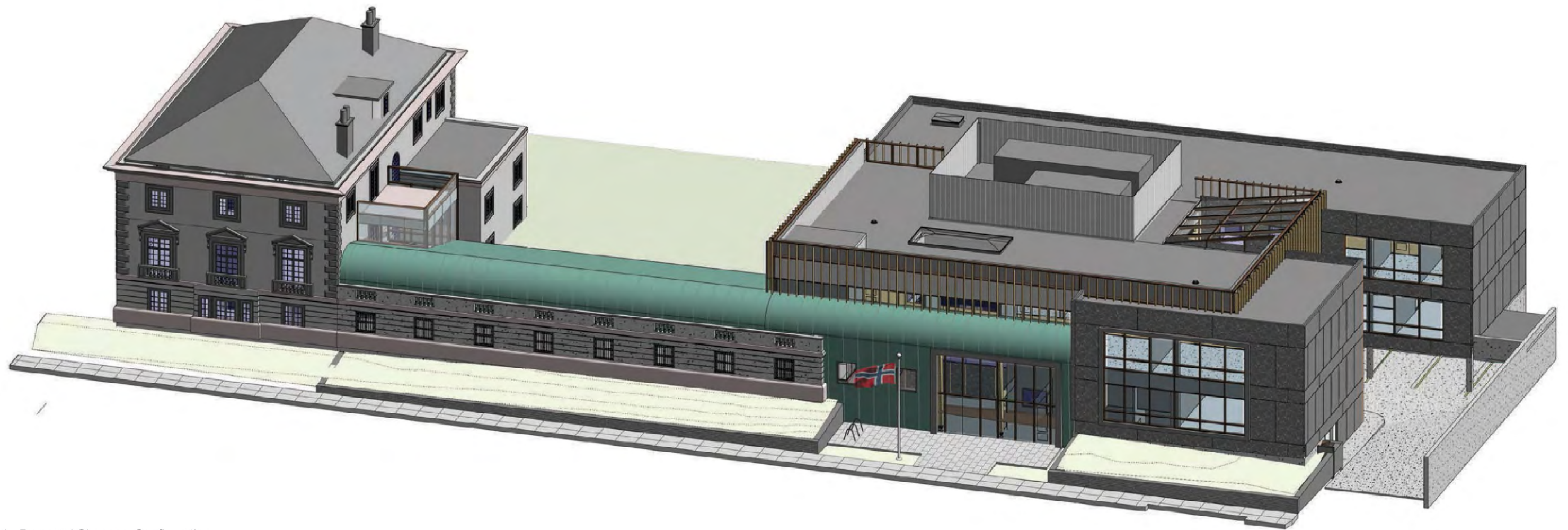
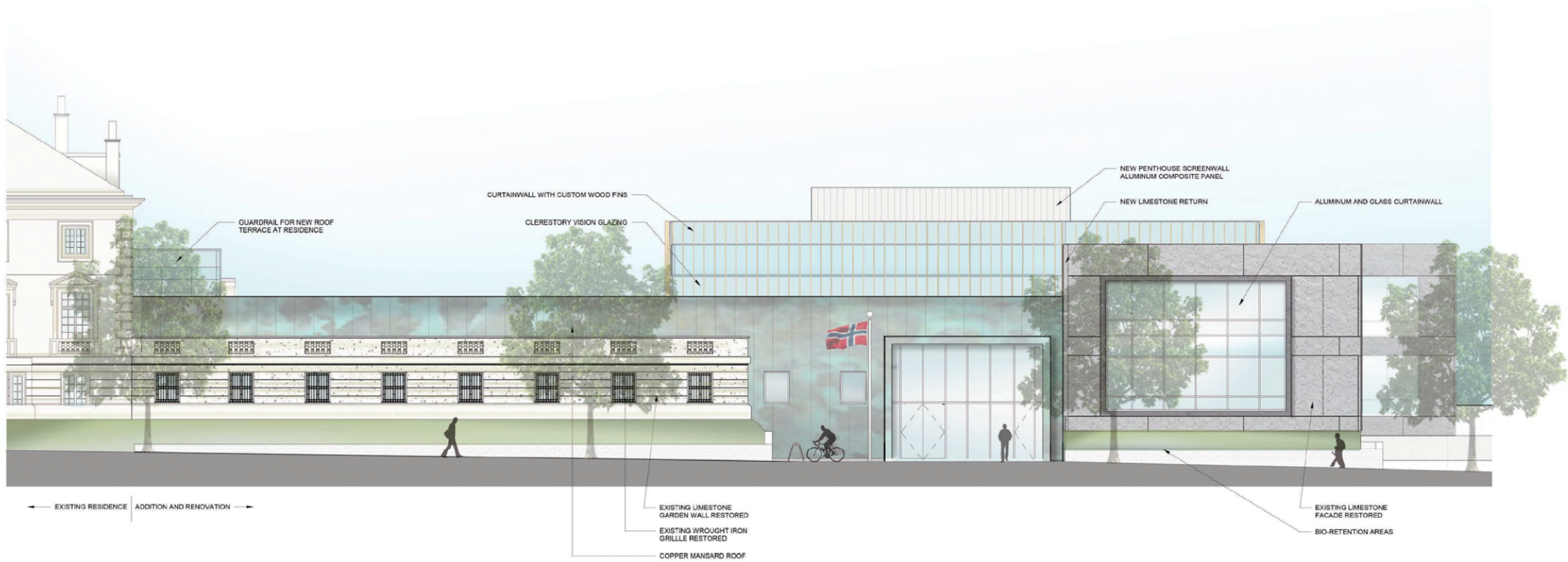


Fig. 1.3.4 - Proposed Chancery Configuration



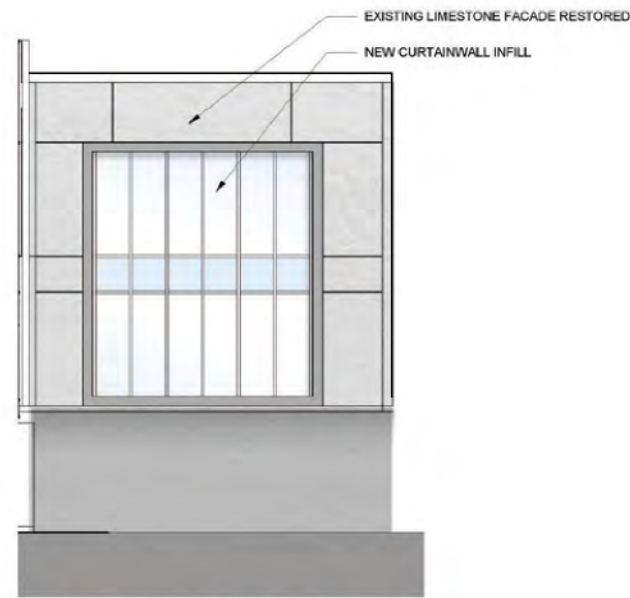
1 ELEVATION - EAST
 A-5.01 SCALE: 1/8" = 1'-0"



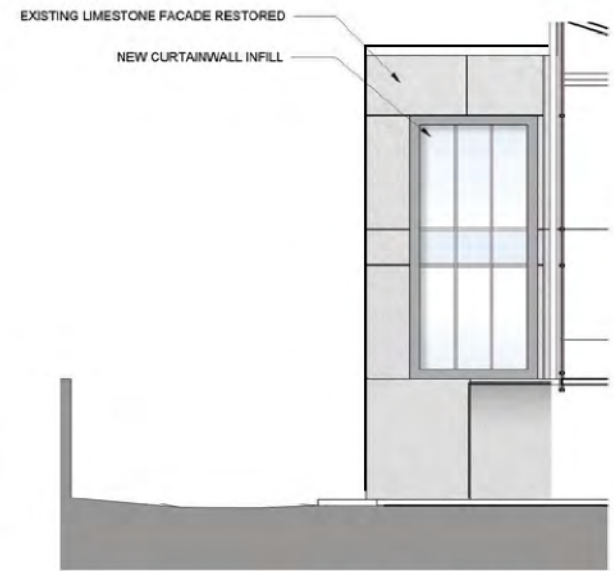


2 ELEVATION - SOUTH
A-5.02 SCALE: 1/8" = 1'-0"

1 ELEVATION - NORTH
A-5.02 SCALE: 1/8" = 1'-0"

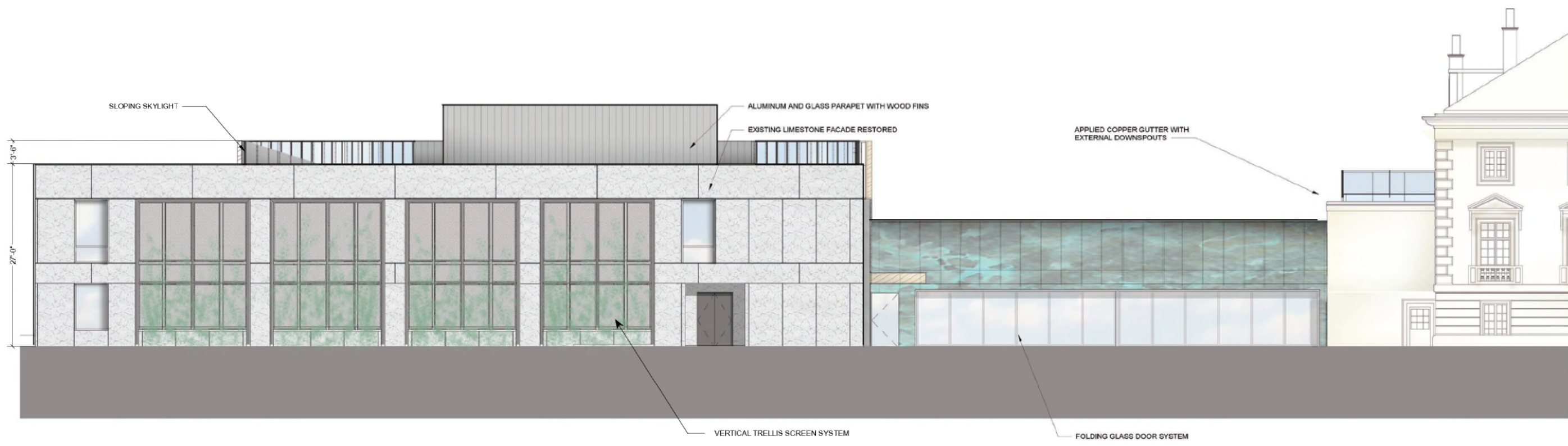


3 CHANCERY_PATIO EAST
A-1.03 A-5.02 SCALE: 1/8" = 1'-0"



4 CHANCERY_PATIO WEST
A-1.03 A-5.02 SCALE: 1/8" = 1'-0"





1 ELEVATION - WEST
 A-5.03 SCALE: 1/8" = 1'-0"



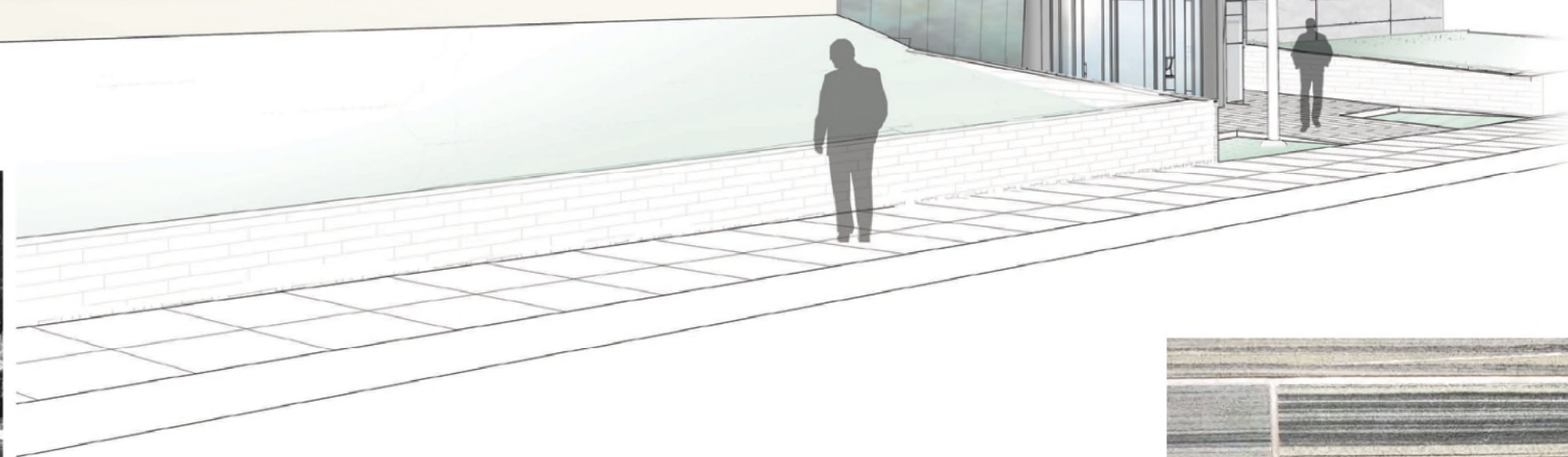


Photo of Existing
Page 1-12

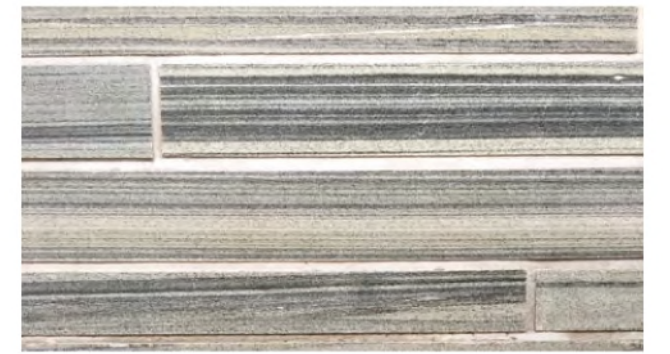
Rendering of 34th Street entrance from north



Photo of Existing



Rendering of 34th Street entrance from south



Oppdal Stone cladding at site retaining walls

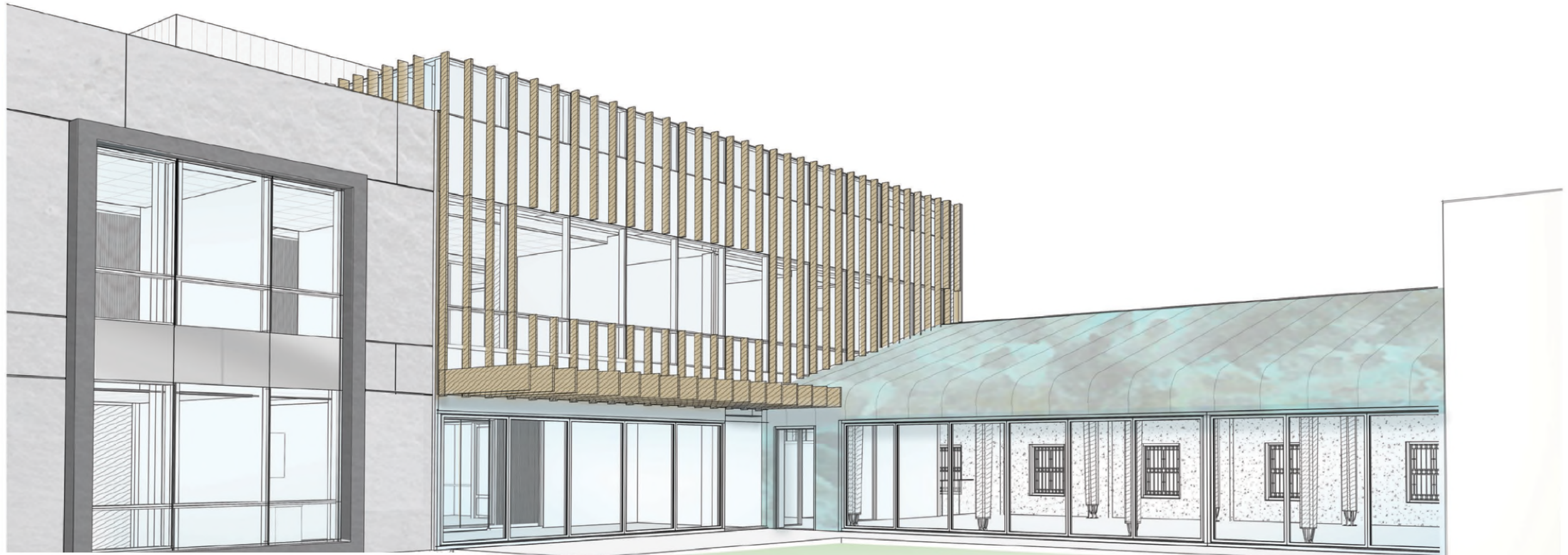


Photo of Existing
Page 1-14

Garden View

