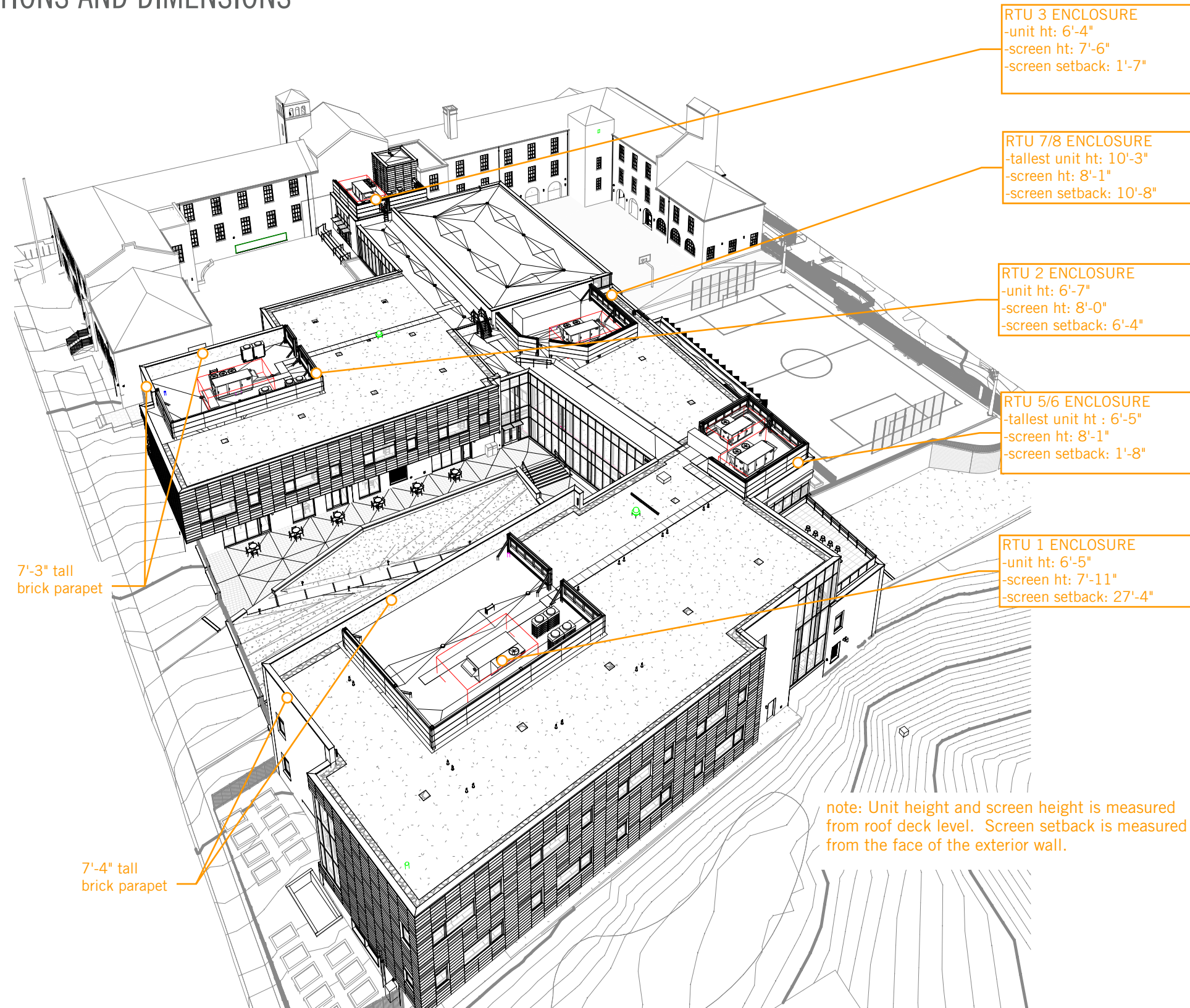


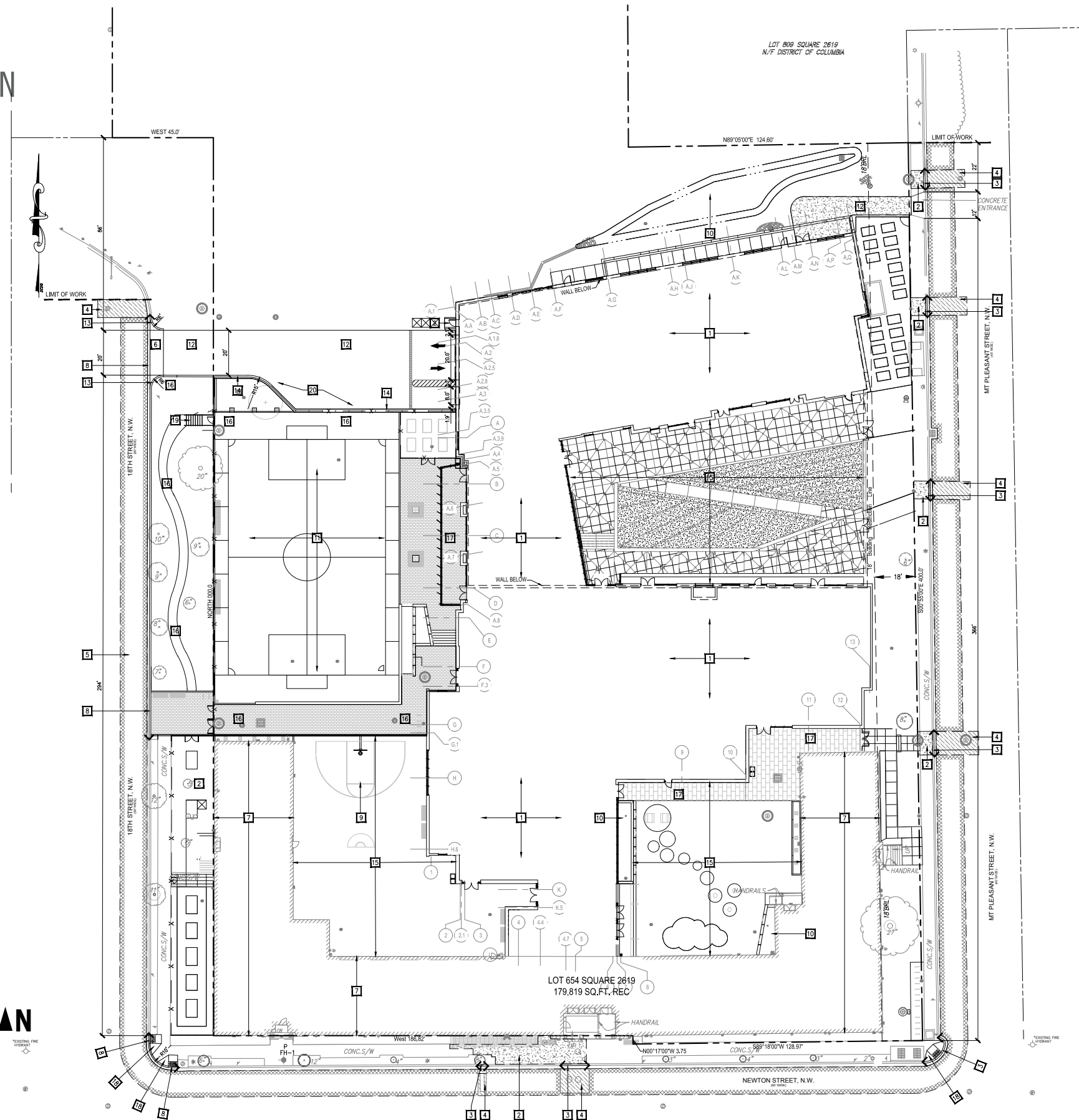
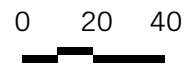
RTU ENCLOSURES: LOCATIONS AND DIMENSIONS



BIRD'S EYE FROM NORTHEAST

RTU ENCLOSURES: PLAN

SITE PLAN



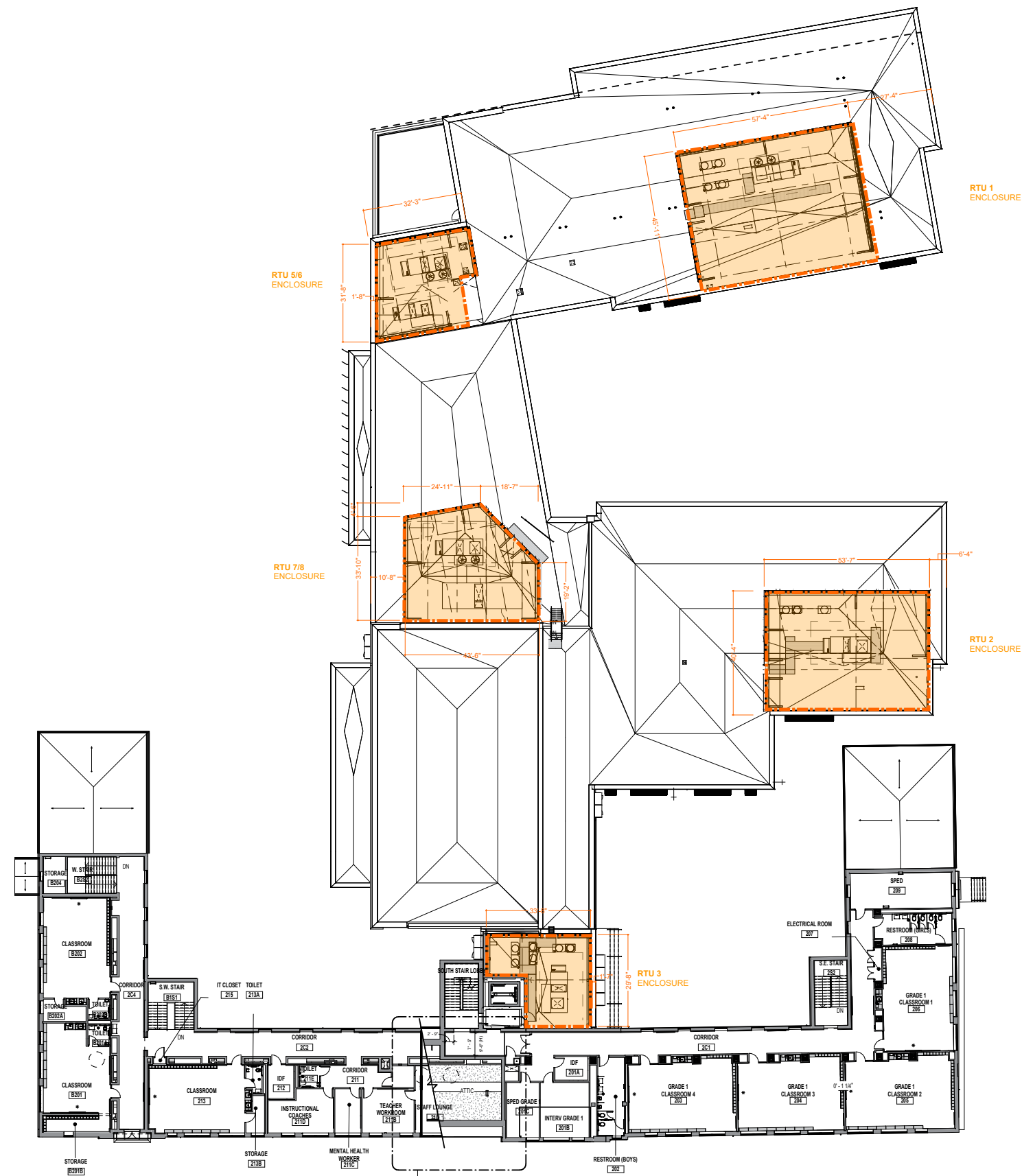
PAVEMENT LEGEND:

NEW ASPHALT PAVEMENT (FULL DEPTH)	
NEW ASPHALT PAVEMENT (SURFACE COURSE)	
NEW CONCRETE PAVEMENT	
NEW BRICK PAVEMENT	
SITE KEY-NOTE	
LIMIT OF WORK	

- SITE KEYNOTES:**
- 1 NEW BUILDING. REFER TO ARCHITECTURAL DRAWINGS FOR DETAILS.
 - 2 NEW CONCRETE SIDEWALK PER DDOT STANDARDS AND SPECIFICATIONS. REFER TO DETAIL ON SHEET CIV013 FOR DETAILS.
 - 3 NEW GRANITE CURB WITH CONCRETE GUTTER PER DC/DDOT STANDARDS AND SPECIFICATIONS. REFER TO DETAIL ON SHEET CIV013.
 - 4 NEW FULL DEPTH ASPHALT PAVEMENT PER DC/DDOT STANDARDS AND SPECIFICATIONS. REFER TO DETAIL ON SHEET CIV013.
 - 5 NEW SURFACE COURSE ASPHALT PAVEMENT PER DC/DDOT STANDARDS AND SPECIFICATIONS. REFER TO DETAIL ON SHEET CIV013.
 - 6 NEW CONCRETE APRON ENTRANCE PER DC/DDOT STANDARDS AND SPECIFICATIONS. REFER TO DETAIL ON SHEET CIV013.
 - 7 EXISTING BUILDING PARTIALLY TO BE RENOVATED. REFER TO ARCHITECTURAL DRAWINGS FOR DETAILS.
 - 8 NEW CONCRETE CURB WITH CONCRETE GUTTER PER DC/DDOT STANDARDS AND SPECIFICATIONS. REFER TO DETAIL ON SHEET CIV013.
 - 9 NEW BASKETBALL COURT. REFER TO LANDSCAPE DRAWINGS FOR DETAILS.
 - 10 NEW BIORETENTION/ NATIVE RAIN GARDEN. REFER TO LANDSCAPE DRAWINGS FOR PLANTING DETAILS, AND STORMWATER MANAGEMENT PLAN FOR SIZING AND CALCULATIONS.
 - 11 NEW ALL PURPOSE FIELD AND TRACK. REFER TO LANDSCAPE DRAWINGS FOR DETAILS.
 - 12 NEW CONCRETE DRIVEWAY PER DC/DDOT STANDARDS AND SPECIFICATIONS. REFER TO DETAIL ON SHEET CIV013.
 - 13 NEW 6" RADIUS CONCRETE CURB RETURN WITH CONCRETE GUTTER PER DC/DDOT STANDARDS AND SPECIFICATIONS. REFER TO DETAIL ON SHEET CIV013.
 - 14 NEW RETAINING WALL. REFER TO STRUCTURAL AND ARCHITECTURAL DRAWINGS FOR DETAILS.
 - 15 NEW COURTYARD/PLAYGROUND AREA. REFER TO LANDSCAPE DRAWINGS FOR DETAILS.
 - 16 SALVAGED PERMEABLE PAVEMENT. REFER TO LANDSCAPE DRAWINGS FOR DETAILS.
 - 17 NEW PAVING. REFER TO LANDSCAPE DRAWINGS FOR DETAILS.
 - 18 NEW RAMP PER DC/DDOT STANDARDS AND SPECIFICATIONS. REFER TO DETAIL ON SHEET CIV013.
 - 19 NEW STAIRS AND HANDRAILS. REFER TO LANDSCAPE DRAWINGS FOR DETAILS.
 - 20 NEW CONCRETE DUMPSTER PAD PER DC/DDOT STANDARDS AND SPECIFICATIONS. REFER TO DETAIL ON SHEET CIV013.

- NOTE:**
1. REFER TO LANDSCAPE DRAWING FOR LAYOUT AND SPECIES OF TREES.
 2. REFER TO LANDSCAPE DRAWING FOR LAYOUT OF STREETSCAPE.
 3. ALL EXISTING MANHOLE TOP TO BE ADJUSTED TO MATCH PROPOSED GRADES.
 4. DC/DDOT MAY REQUIRE NEW ASPHALT SURFACE COURSE TO CENTERLINE OF THE STREET, PER DC/DDOT INSPECTOR'S RECOMMENDATIONS. CONTRACTOR TO COORDINATION LIMITS OF NEW ASPHALT SURFACE COURSE WITH DC/DDOT INSPECTOR.

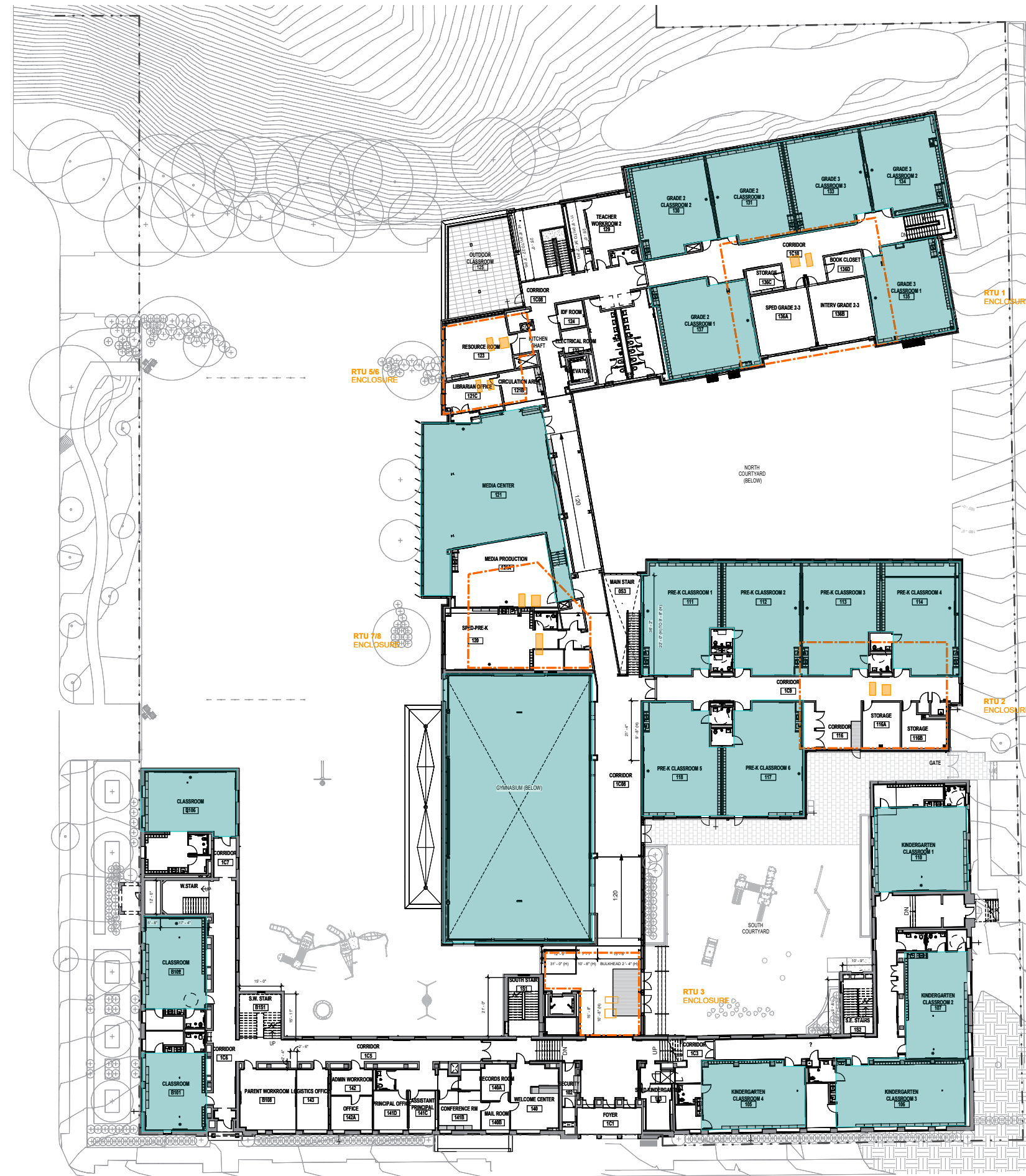
RTU ENCLOSURES: PLAN



LEVEL 2 / ROOF 0 20 40 **N**

 RTU ENCLOSURE

RTU ENCLOSURES: PLAN



LEVEL 1



- RTU ENCLOSURE ABOVE
- CORE LEARNING SPACE
- ROOF PENETRATION

RTU ENCLOSURES: SOUND PERFORMANCE DATA

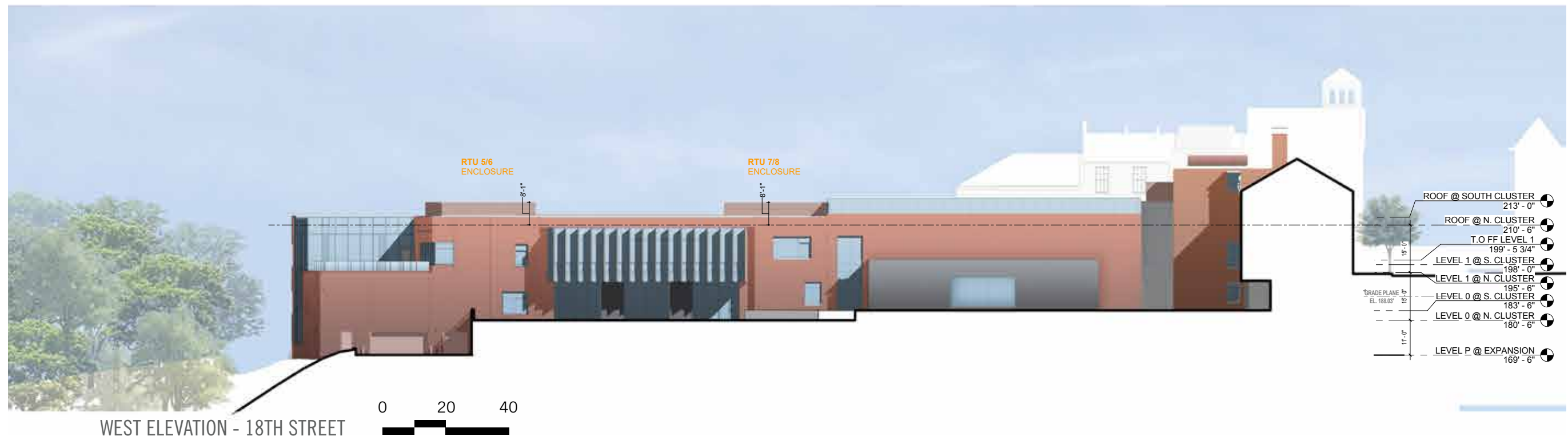


RTU ENCLOSURES: PERSPECTIVES



VIEW FROM MT. PLEASANT STREET LOOKING NORTH

RTU ENCLOSURES: ELEVATIONS



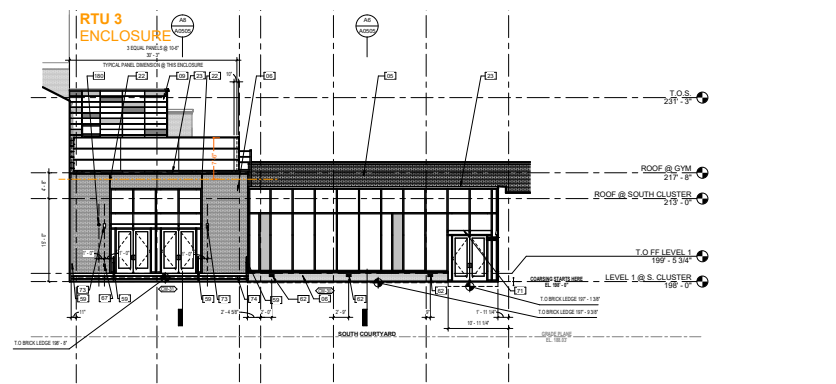
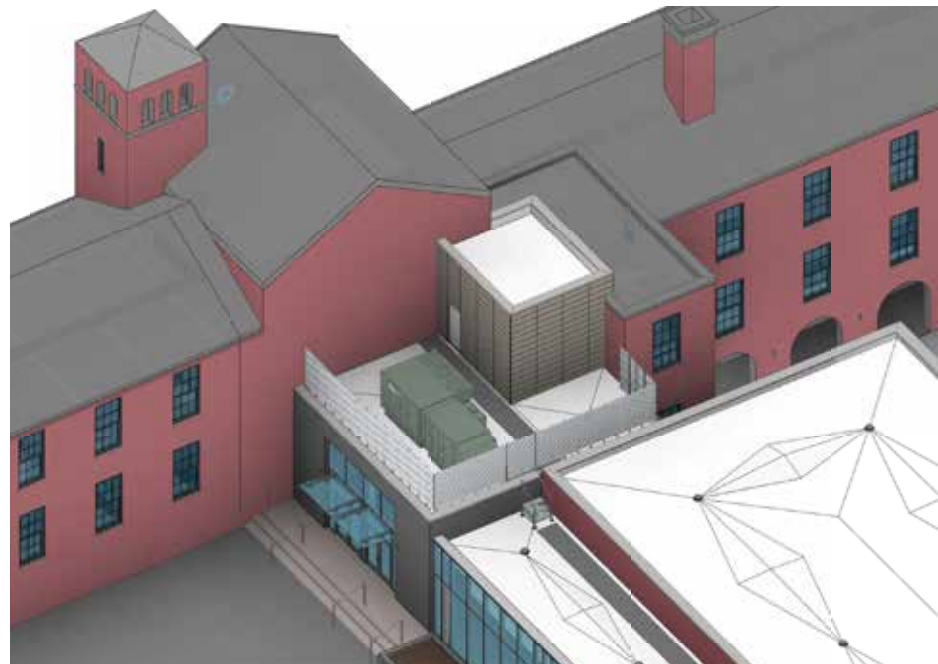
RTU ENCLOSURES: ELEVATIONS



SOUTH ELEVATION - NEWTON STREET



RTU ENCLOSURES: RTU 3 LOCATION



EAST ELEVATION - NORTH COURTYARD



AXON



VIEW FROM COURTYARD