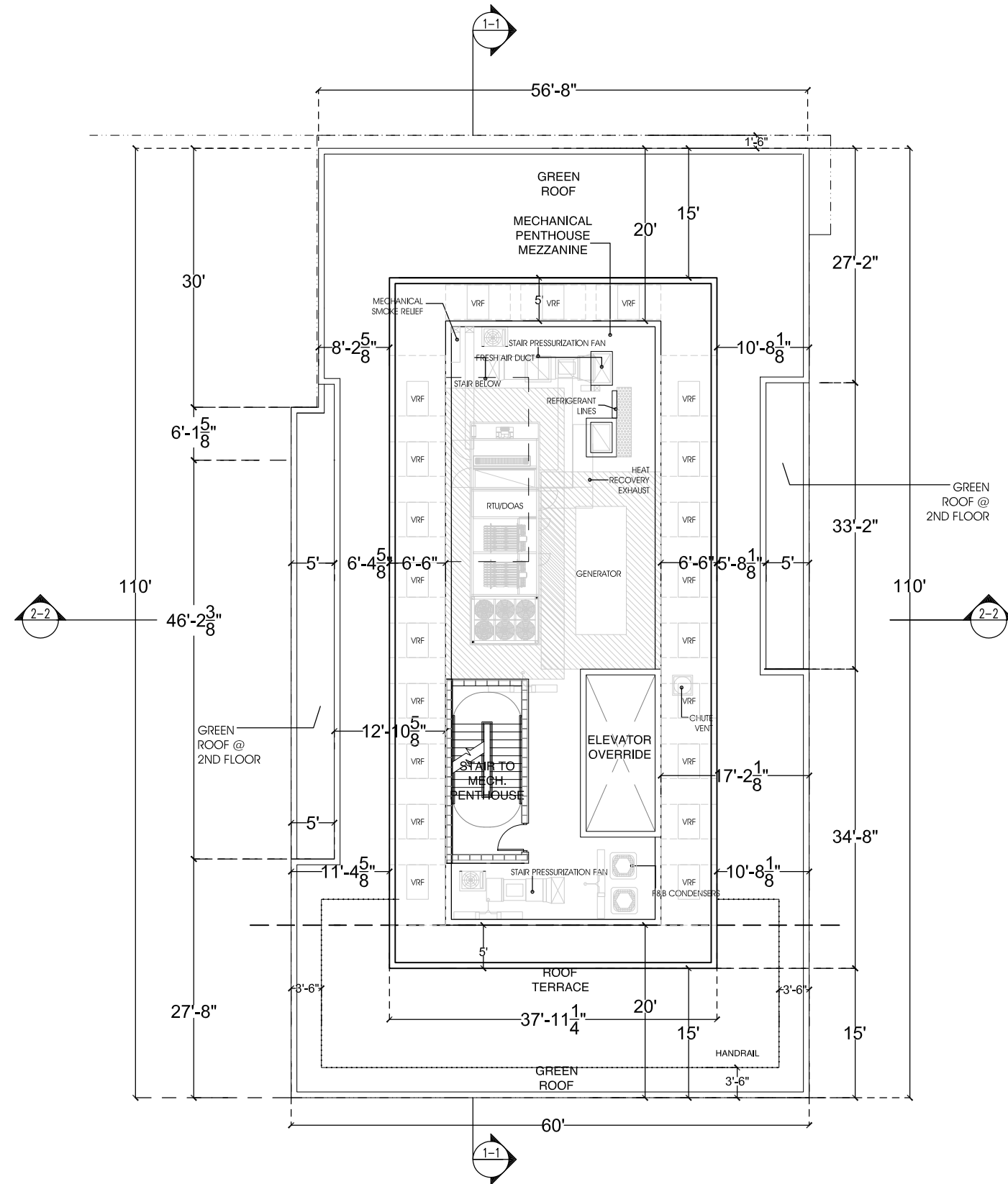
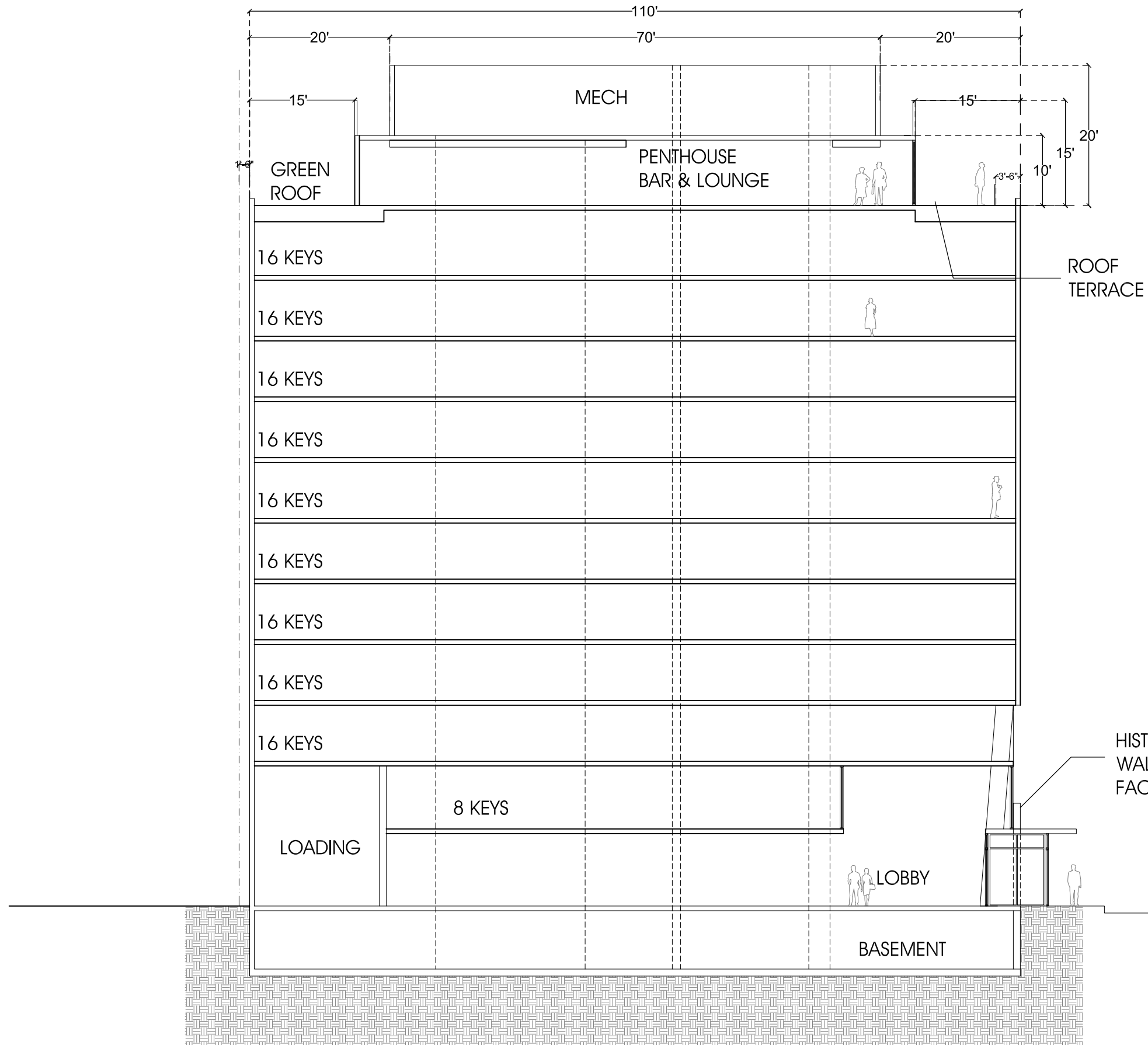


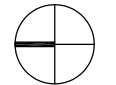
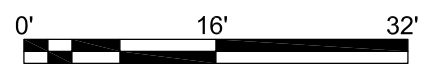
MECHANICAL AREA SUMMARY

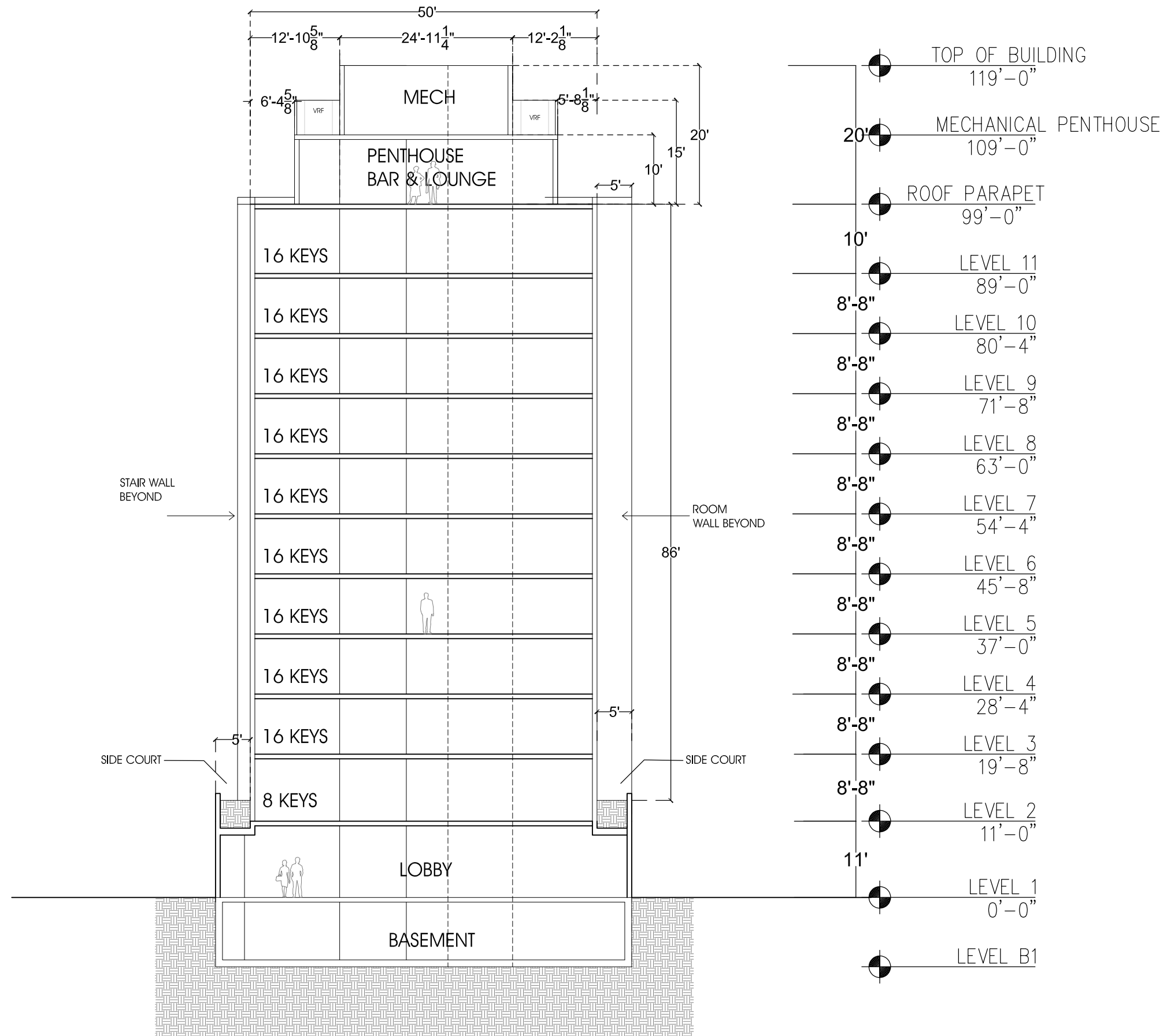
MECHANICAL: 3,035 SF





●	TOP OF BUILDING	119'-0"
●	MECHANICAL PENTHOUSE	109'-0"
●	ROOF PARAPET	99'-0"
10'		
●	LEVEL 11	89'-0"
8'-8"		
●	LEVEL 10	80'-4"
8'-8"		
●	LEVEL 9	71'-8"
8'-8"		
●	LEVEL 8	63'-0"
8'-8"		
●	LEVEL 7	54'-4"
8'-8"		
●	LEVEL 6	45'-8"
8'-8"		
●	LEVEL 5	37'-0"
8'-8"		
●	LEVEL 4	28'-4"
8'-8"		
●	LEVEL 3	19'-8"
8'-8"		
●	LEVEL 2	11'-0"
11'		
●	LEVEL 1	0'-0"
●	LEVEL B1	



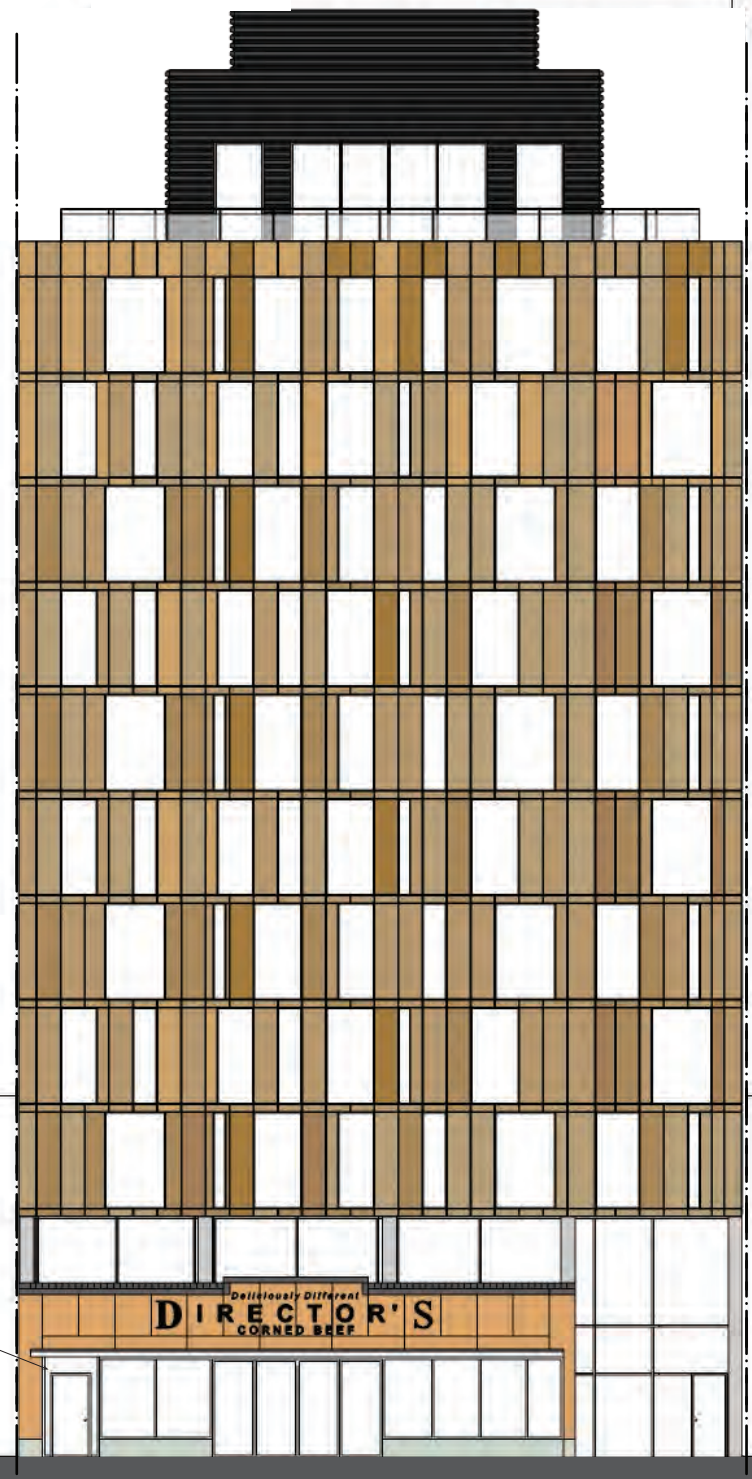


BUILDING BEYOND

EXISTING HISTORIC BUILDING

EXISTING HISTORIC FACADE

PROPOSED BUILDING



	TOP OF BUILDING	119'-0"
20'	MECHANICAL PENTHOUSE	111'-8"
	ROOF DECK	99'-0"
10'	LEVEL 11	89'-0"
8'-8"	LEVEL 10	80'-4"
8'-8"	LEVEL 9	71'-8"
8'-8"	LEVEL 8	63'-0"
8'-8"	LEVEL 7	54'-4"
8'-8"	LEVEL 6	45'-8"
8'-8"	LEVEL 5	37'-0"
8'-8"	LEVEL 4	28'-4"
8'-8"	LEVEL 3	19'-8"
8'-8"	LEVEL 2	11'-0"
11'	EXISTING HISTORIC BUILDINGS	
	LEVEL 1	0'-0"

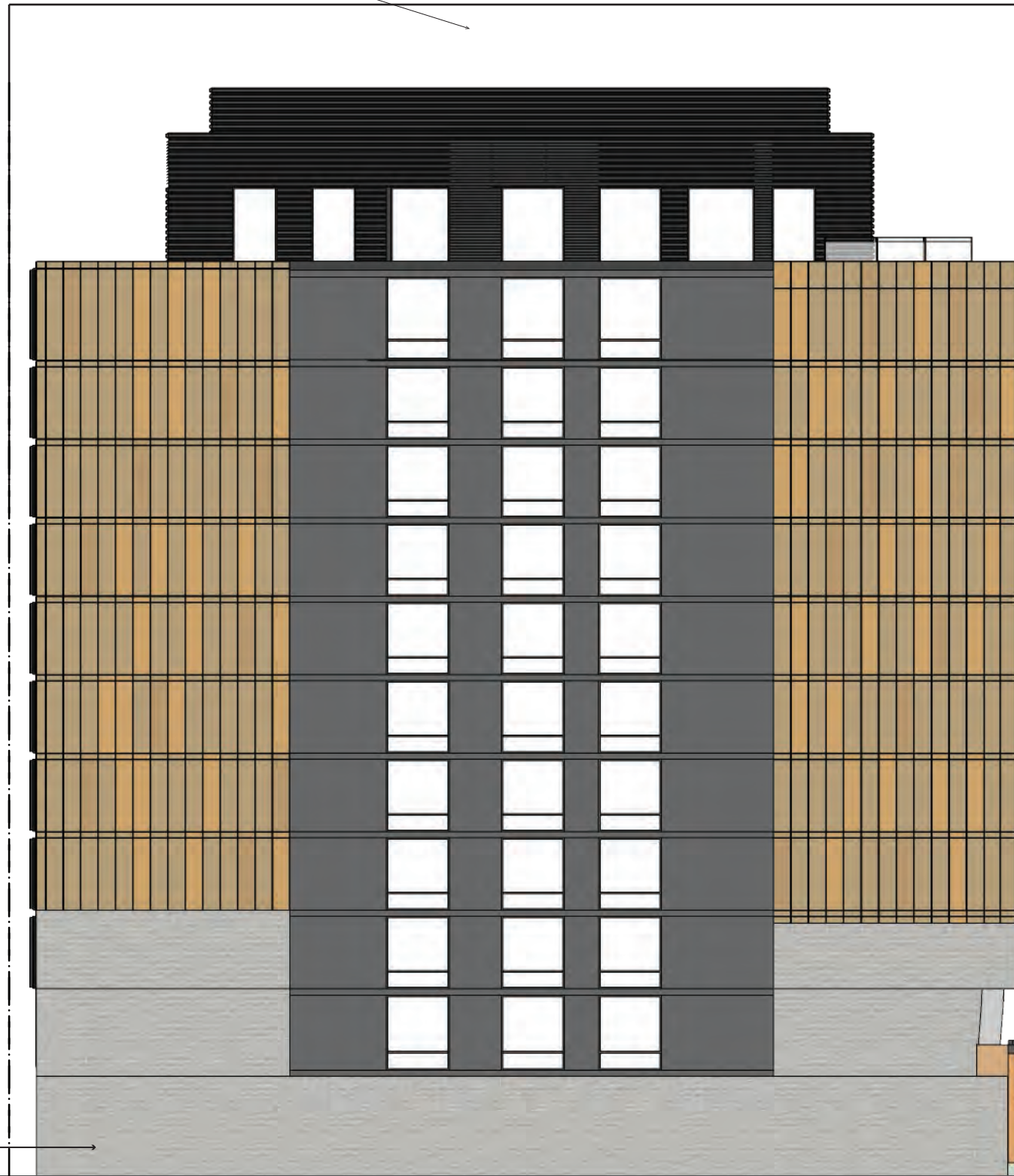


PROPOSED BUILDING BEYOND

ADJACENT BUILDING

CMU BLOCK

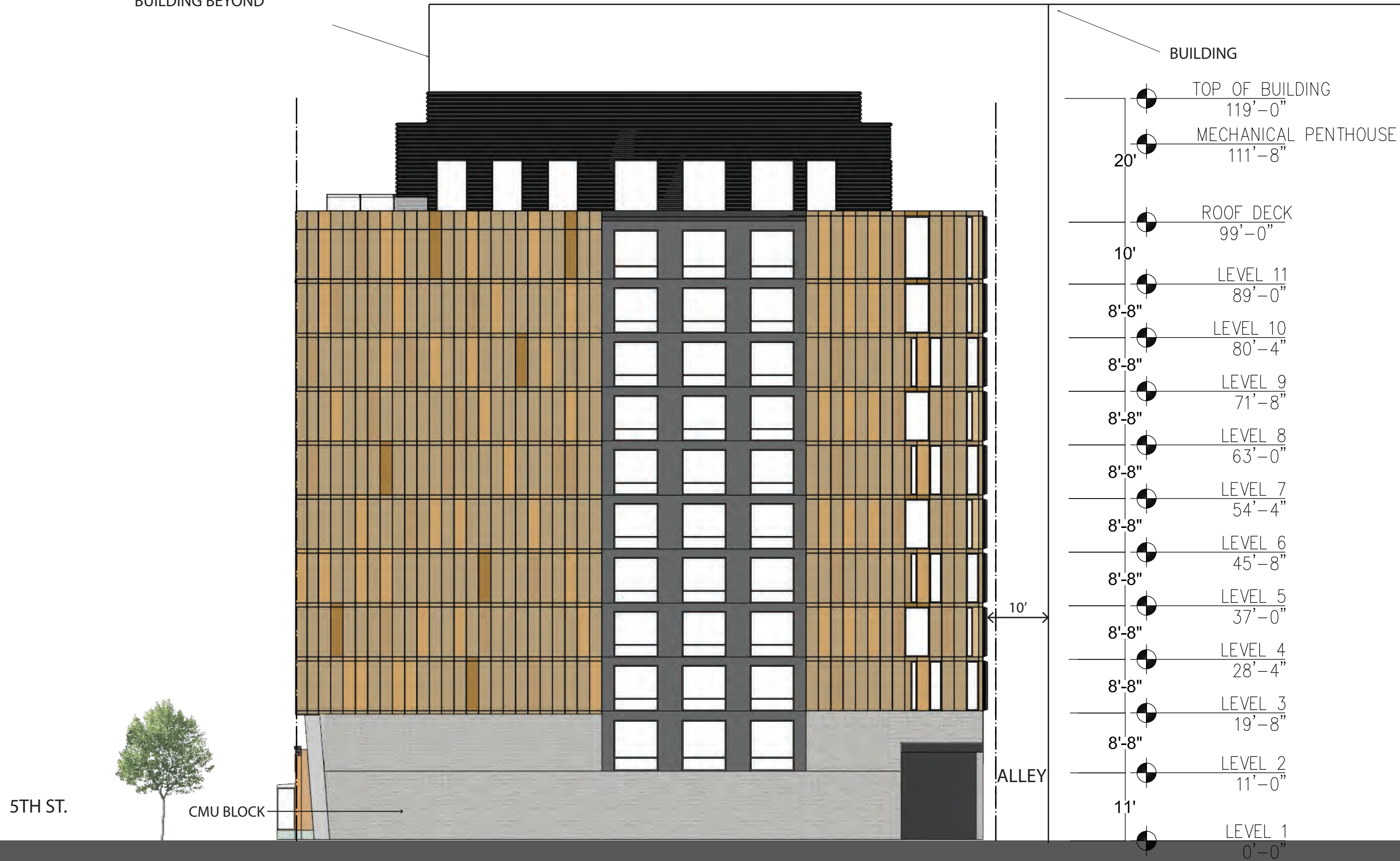
ALLEY



	TOP OF BUILDING	119'-0"
20'	MECHANICAL PENTHOUSE	111'-8"
	ROOF DECK	99'-0"
10'	LEVEL 11	89'-0"
8'-8"	LEVEL 10	80'-4"
8'-8"	LEVEL 9	71'-8"
8'-8"	LEVEL 8	63'-0"
8'-8"	LEVEL 7	54'-4"
8'-8"	LEVEL 6	45'-8"
8'-8"	LEVEL 5	37'-0"
8'-8"	LEVEL 4	28'-4"
8'-8"	LEVEL 3	19'-8"
8'-8"	LEVEL 2	11'-0"
	LEVEL 15TH ST.	0'-0"

BUILDING BEYOND

BUILDING



5TH ST.



CMU BLOCK

ALLEY



VIEW FROM EAST K STREET (10' HEIGHT)

923-927 5TH ST. HOTEL
SHEET | A025

MODEL VIEW

SCALE: NTS
DATE: 05.02.2018

FILLAT+
ARCHITECTURE

© Copyright 2016. FILLAT + ARCHITECTURE All rights reserved.



VIEW NORTH DOWN 5TH STREET (PEDESTRIAN HEIGHT)



VIEW FROM NORTHEAST K STREET (20' HEIGHT)

923-927 5TH ST. HOTEL
SHEET | A027

MODEL VIEW

SCALE: NTS
DATE: 05.02.2018

FILLAT+
ARCHITECTURE



VIEW OPPOSITE 5TH STREET (PEDESTRIAN HEIGHT)



VIEW OPPOSITE 5TH STREET (PEDESTRIAN HEIGHT)



VIEW SOUTH DOWN 5TH STREET (PEDESTRIAN HEIGHT)